



GEF COUNCIL MEETING 66

IEO Evaluation Update

February 2024





Celebrating two decades of influence



[Website](#)

[Anniversary Video](#)

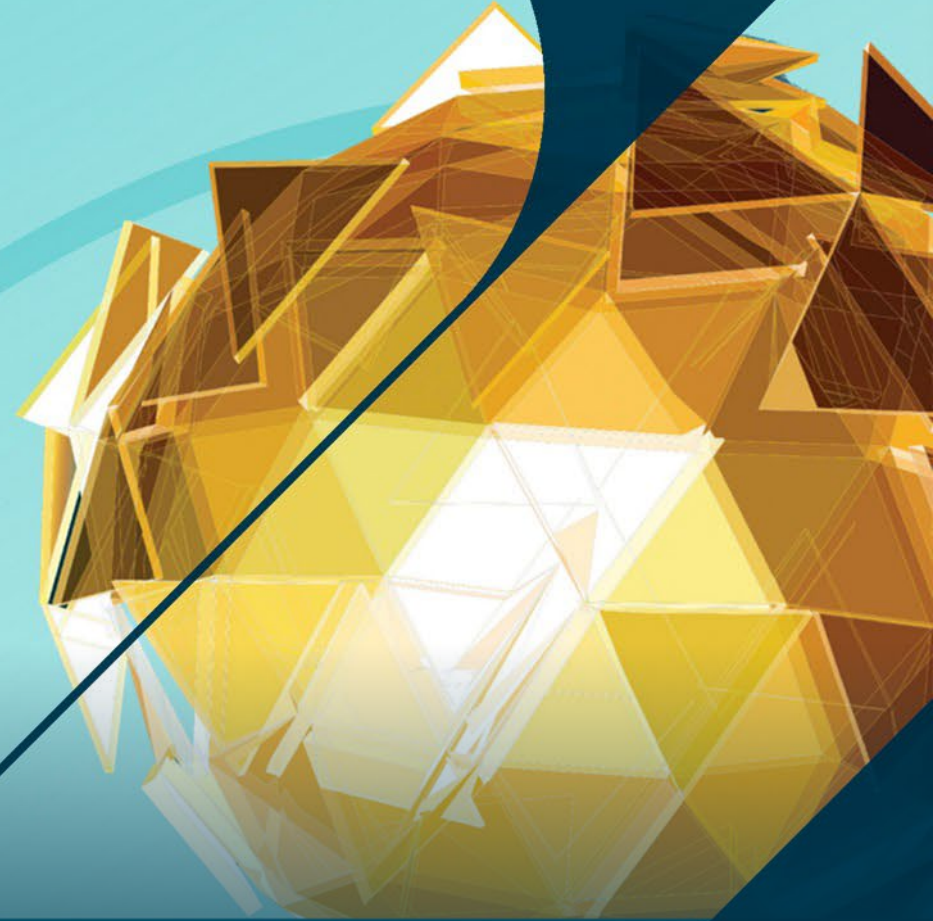
[Anniversary Brochure](#)



Independent
Evaluation Office
GLOBAL ENVIRONMENT FACILITY



KNOWLEDGE MANAGEMENT



Knowledge Management



BOOKS AND GUIDELINES

- **Open access publication** *Conflict-Sensitive Conservation. Lessons from the Global Environment Facility*
- **Guidelines** on terminal evaluations, completed enabling activities, program evaluation



TRAINING

- **Workshop on Evaluation** at the nexus of the environment and development for the *International Program for Development Evaluation Training*
- **Online training** on environmental evaluation

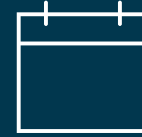


MEETINGS AND PARTNERSHIPS

- **GEF Assembly:** Side event on evaluation use and influence
- **COP28:** Co-hosted events with evaluation units of multilateral climate funds
- **IEG@50 & GEI:** Future proofing national evaluation systems environment



GEF IEO Conference



2024, March 5th - 7th
Washington, DC

INTEGRATING
**ENVIRONMENTAL AND
SOCIOECONOMIC DOMAINS**
FOR **SUSTAINABILITY**



Evaluation Overview

- 1 Drylands
- 2 Community-based approaches
- 3 Learning from challenges
- 4 Climate information and early warning systems

1

Strategic country cluster evaluation

GEF SUPPORT TO DRYLANDS COUNTRIES



Background and key challenges



Over

40 percent

of the Earth's land surface

Shared

land-based

environmental challenges

Home for

2 billion

people

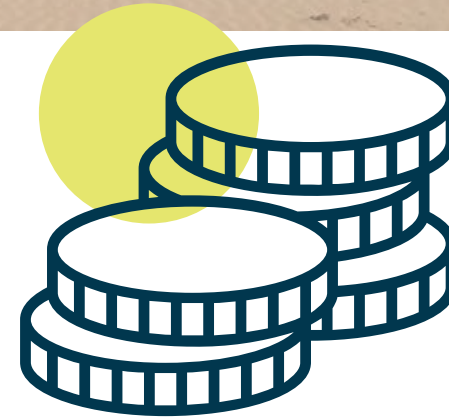
Challenges to

human well-being

GEF support



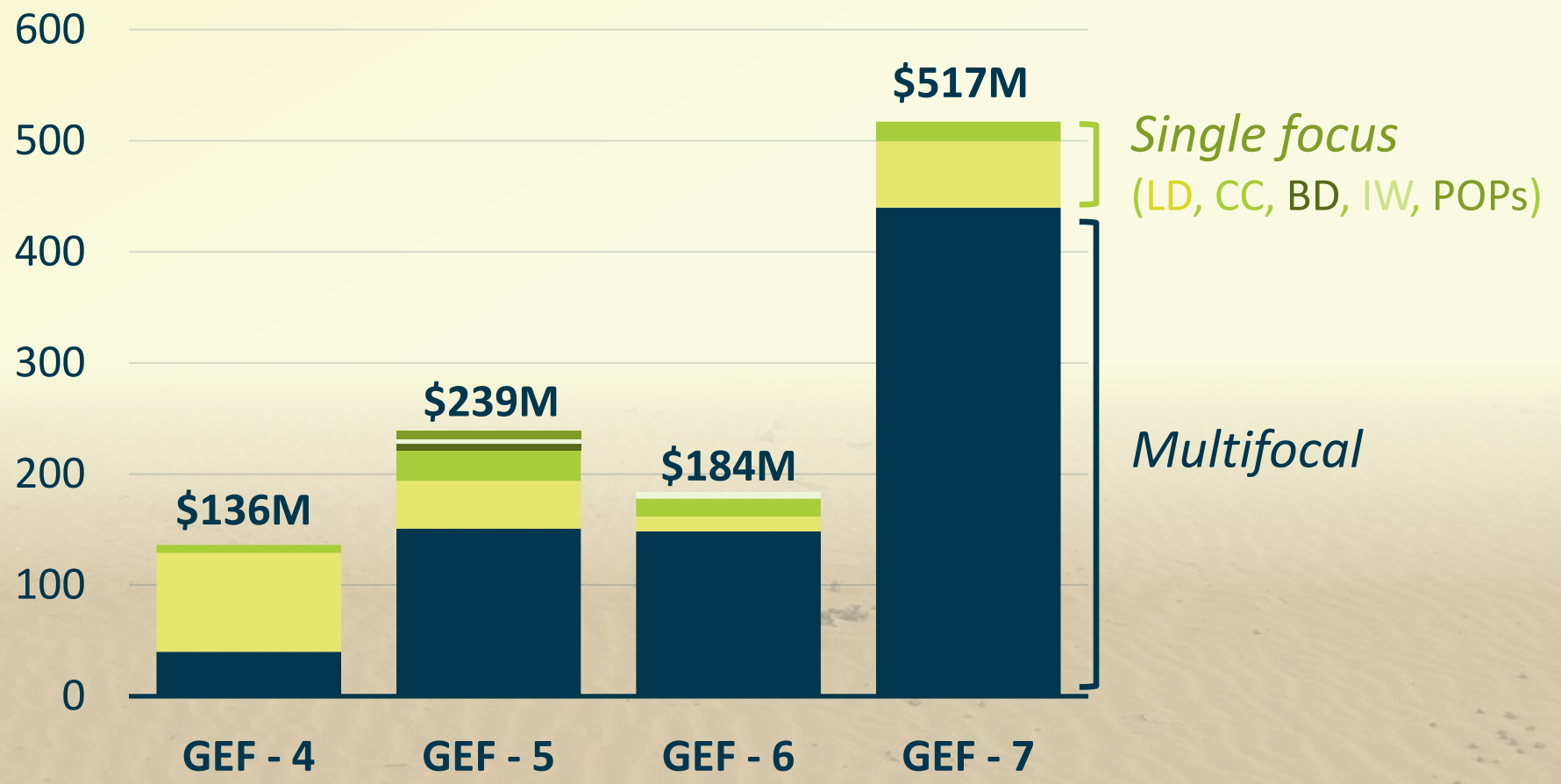
Land degradation strategies



GEF substantial and increasing share of funding in management of drylands

Portfolio

GEF drylands related funding in USD million



Portfolio

Share of evaluation portfolio's GEF funding



Funding Source

GEF Trust Fund

81%



Project Type

Full-size Project

96%



Focal Area

Multi-Focal

72%



Region

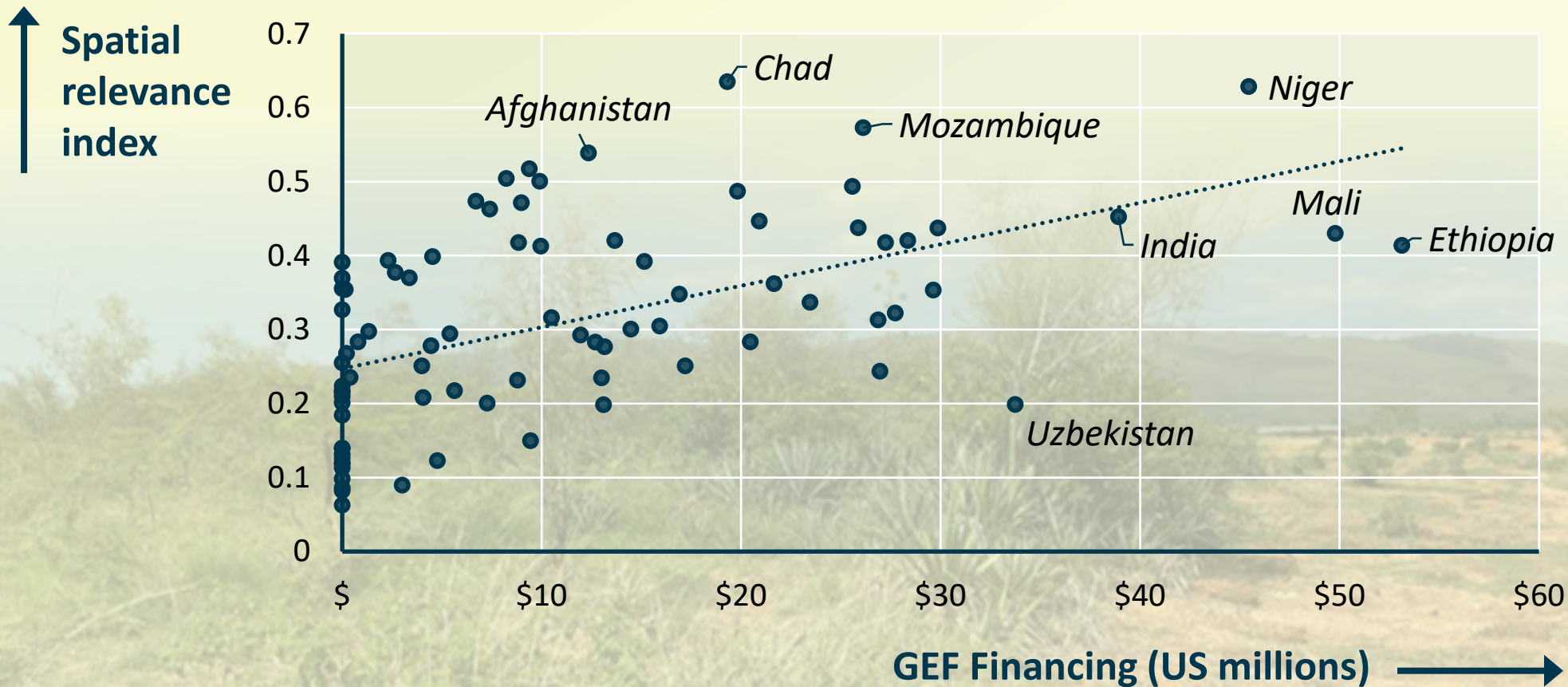
Africa

59%

1

Relevance and Coherence

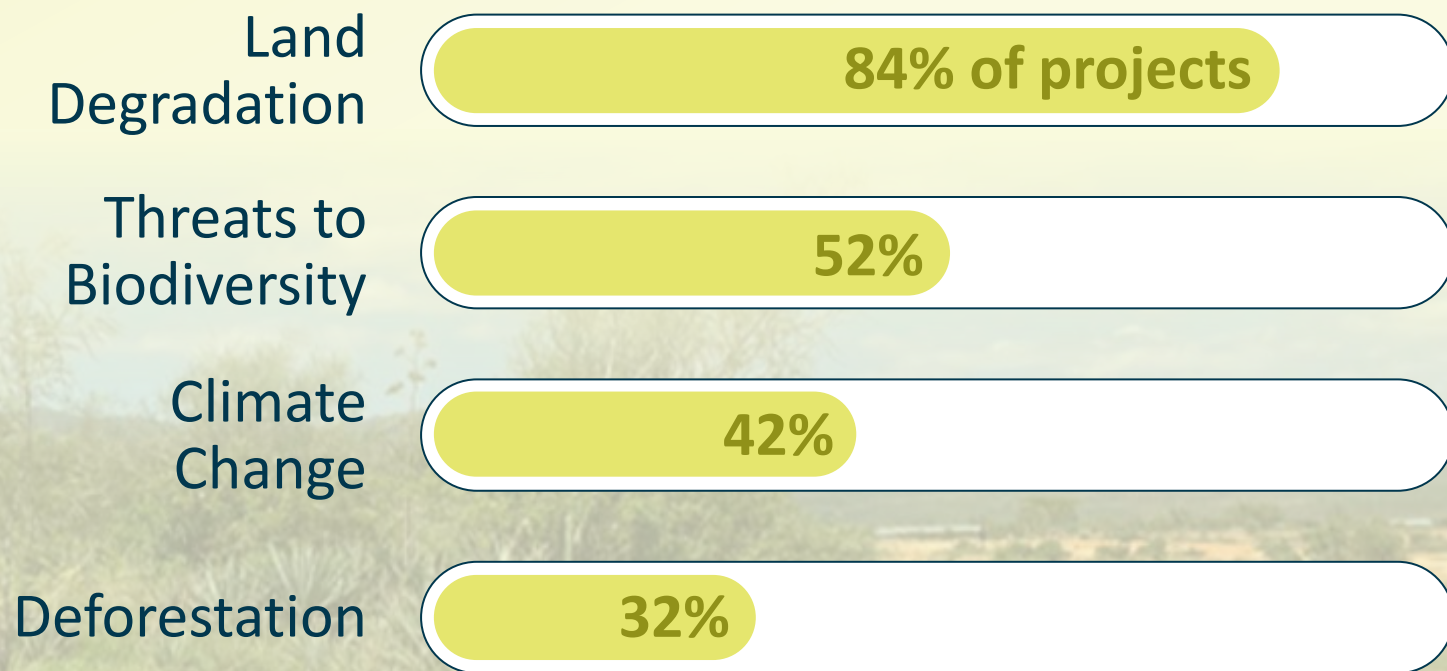
GEF has been highly relevant to key environmental challenges in drylands



1

Relevance and Coherence

Key drylands environmental challenges targeted by GEF drylands projects



Source: GEF/IEO project document review. Confirmed by stakeholder surveys.

1

Relevance and Coherence

- Projects identified **policy misalignments at design** but **didn't succeed** in mitigating their impact on outcomes

- National policy coherence **did not translate** into **local policy coherence** during implementation

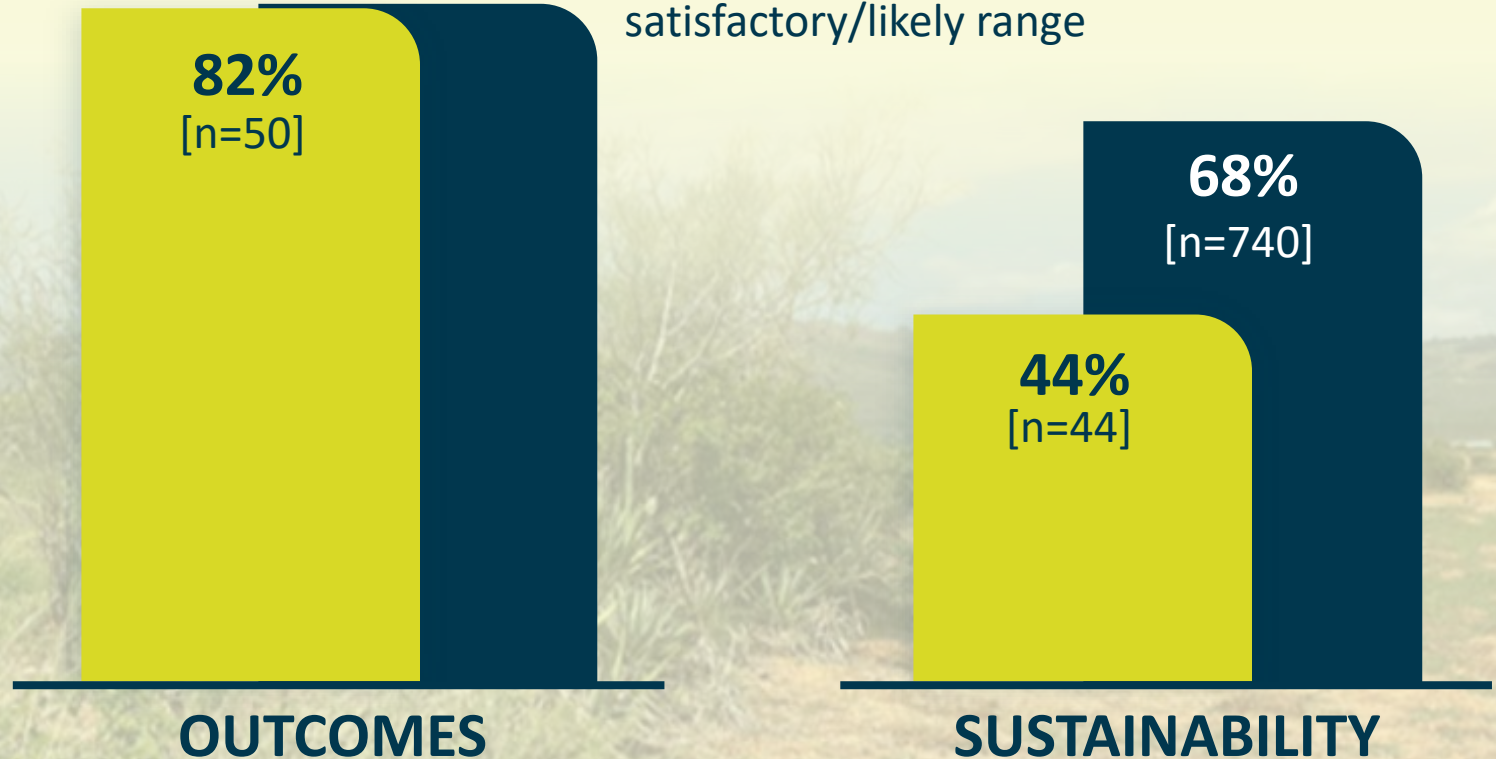
2

Environmental and socioeconomic sustainability: Performance

Drylands vs **Overall GEF** portfolio performance

GEBs and Socio Economic co-benefits delivered across dryland sub habitats, less in pastoral lands

83% of GEF4, GEF5 & GEF6 projects [n=781] with performance ratings in the satisfactory/likely range



Results and Impact (Example)

GEF IDs
3376 &
4625

MALAWI

Improved sustainable landscape management practices and agricultural productivity on 480,000 ha, more than 10% of agricultural lands



Balaka district, Malawi: Stabilizing the Mwayi and Mkasi rivers through riverbank reforestation (GEF ID 3376)

Results and Impact (Example)



GEF IDs
3382 &
5252

NIGER

Delivered over **250,000 ha**
under improved soil and water
management practices

Sustainably improved vegetation
coverage, reduced erosion and
soil salinity

Madjekameram and Kosseri Blabrim districts, Niger: Fixed land dunes and beneficiary vegetable gardens (GEF ID 3382)

Results and Impact (Example)

GEF IDs
2794 &
5220

ETHIOPIA

Restored about **154,000 ha** of degraded farmland and communal land

Agroforestry and area closures led to a **5%** increase in vegetation cover

Gross primary production grew by **14%** in project areas affected by severe droughts

Dugna Fango district, Ethiopia: Non restored and restored land areas side by side (GEF ID 5220)



2

Environmental and socioeconomic sustainability

Reliance on area-based indicators **limits ability** to track changes in Environmental status

Natural resource governance at design **not translated** in results

Limited attention to **conflict and land tenure** in project design



Madjekameram and Kosséri Blabrim districts, Niger: Fixed land dunes and beneficiary vegetable gardens (GEF ID 3381)

2

Environmental and socioeconomic sustainability

Successful in fostering synergies between environment and development



Not enough attention to mitigating trade-offs



Ismayilli region, Azerbaijan:
Pasture pilot sites (GEF ID 4332)

2

Environmental and socioeconomic sustainability

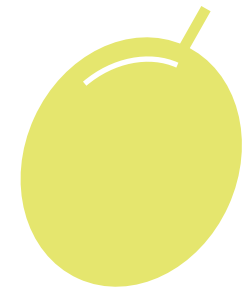


*Madjekameram and Kossieri
Blabrim districts, Niger: Fixed
land dunes and beneficiary
vegetable gardens (GEF ID 3381)*



Sustainability
less assured

Involvement of
private sector
more limited
but improving



Recommendations



- 1 Focus **policy coherence efforts** on subnational and local levels
- 2 Include **land tenure security** and **conflict resolution** at design
- 3 Equal attention to **fostering synergies** and **mitigating trade-offs** between environment and socioeconomic development
- 4 Provide **project level monitoring data** showing associated biophysical changes for relevant area-based core indicators

2

**EVALUATION OF
COMMUNITY BASED
APPROACHES
AT THE GEF**



Coverage

Involve

**communities
and people**

with both social and
environmental objectives

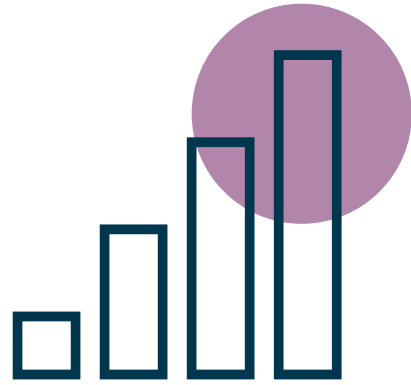


Contribute to the

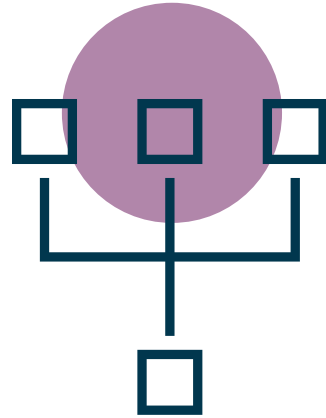
**durability and
ownership**

of investments

GEF Support



**Since GEF-4,
increasing frequency
through GEF-8**



**Whole of Society'
approach in Climate
Change Adaptation
Strategy for GEF-8**



**GEF policies foster
inclusion and prevent
harm to stakeholders
and the environment**



Portfolio

Share of evaluation portfolio's GEF funding



Funding Source

GEF Trust Fund



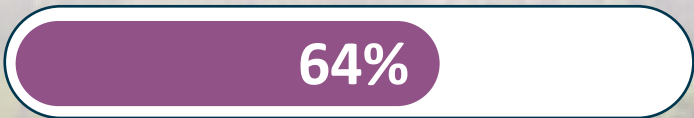
Project Type

Full-size Project



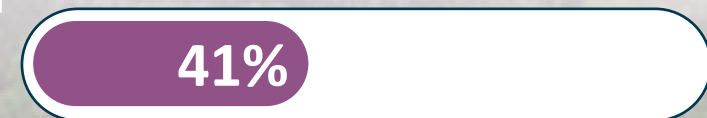
Focal Area

Multi-Focal

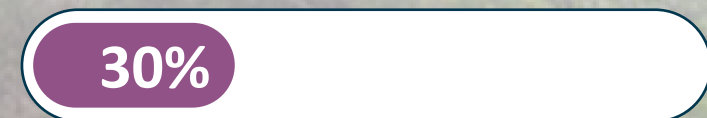


Region

Africa



Asia



Relevance

- **Present in:**
Multilateral environmental agreements;
GEF projects, programs, and policies;
National priorities

*Community-managed forest near
protected area in Indonesia,
supported by GEF ID: 3279*

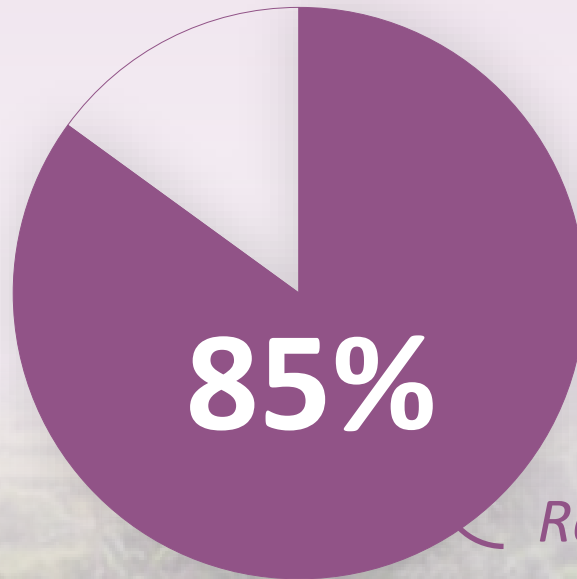
Results and Performance

Effectiveness ratings for CBA projects

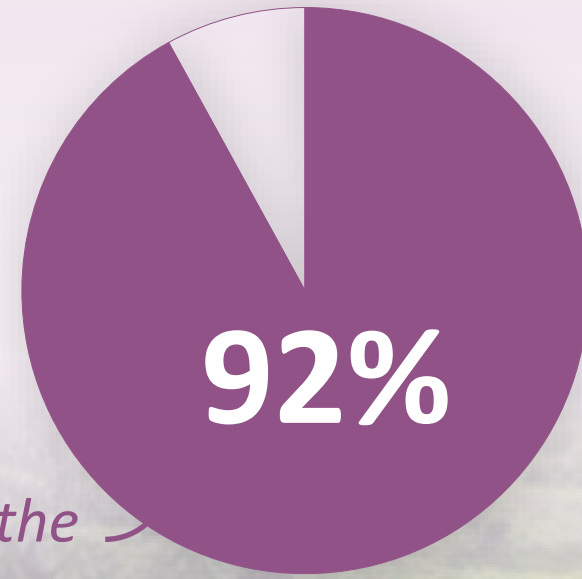
Better performance ratings

Achievement of socioeconomic co-benefits at project close

GEF-4 & 5

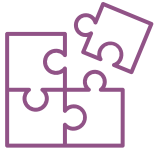


GEF-5



Ratings in the positive range

Results and Performance



Sustainability associated with behavior change, and to some extent alternative livelihoods



Activities related to capacity building for ecological monitoring sustained post completion in most sites visited



Results and Performance

MRPA
(GEF ID
3687)

MADAGASCAR

Decreased rates of mangrove deforestation and expansion of the forested mangrove area

The MRPA project:

- *Strengthened community groups*
- *Fostered legitimacy through a participatory planning process*
- *Recognized community land tenure*
- *Community-selected livelihoods activities linked to private sector, supporting sustainability.*



Inclusion



More inclusive of women, IPLCs, and youth over time



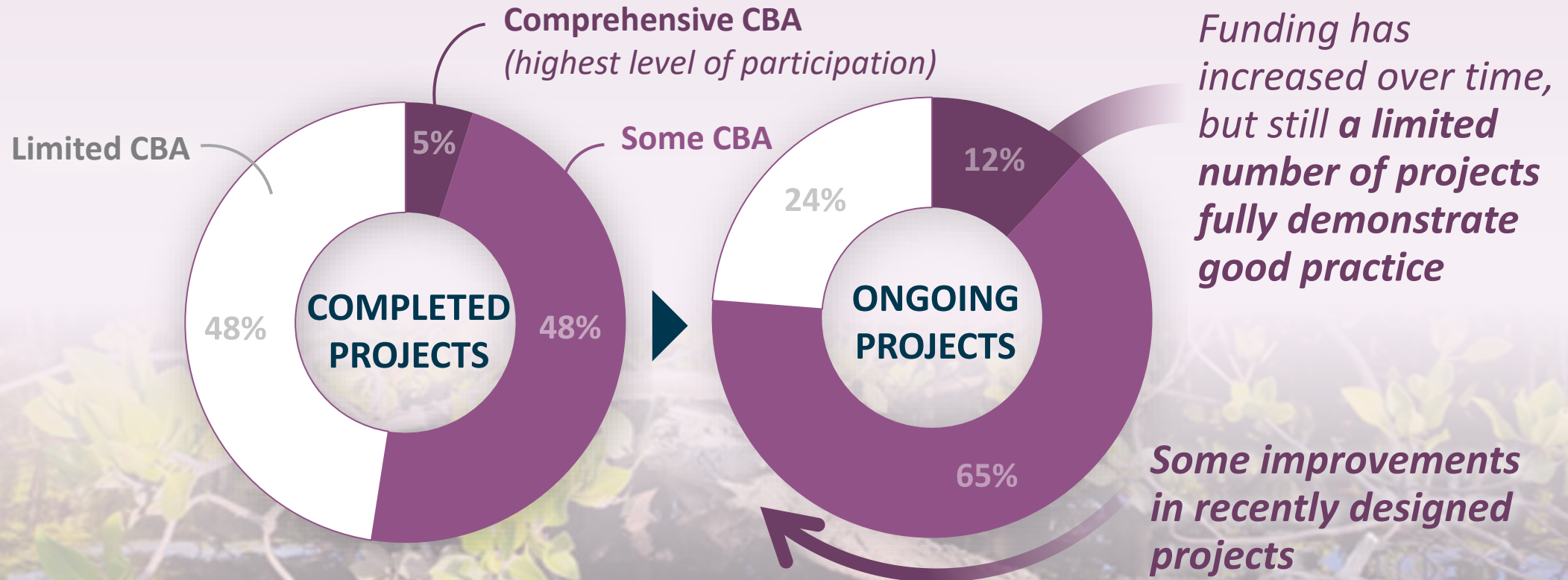
Voluntary community forest patrol group, Madagascar (GEF ID: 3773).

Community-based approaches in the GEF: Community Voices



Alignment with good practice

Comprehensiveness of community based approaches

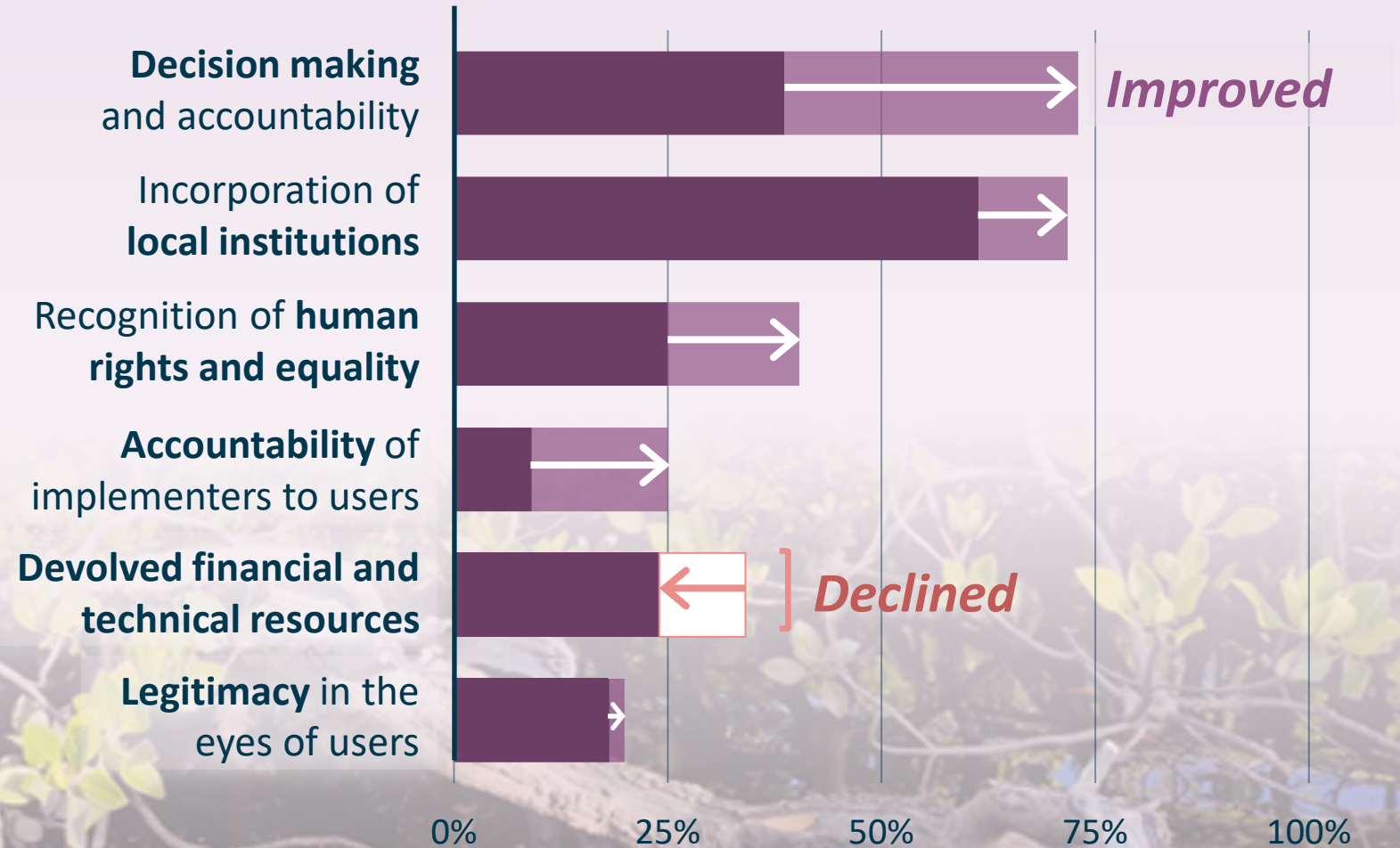


Source: GEF/IEO analysis.

Alignment with good practice

Projects scoring in the top two categories for good practices

6 DIMENSIONS



Community engagement in design, implementation, and monitoring



GEF project cycle presents **challenges for implementing** CBA projects



Lack of indicators limits ability to adaptively manage



Recommendations



- 1 Ensure that **co-design of projects with communities** is possible under the suite of GEF policies and guidelines
- 2 Provide **more clarity and guidance** on when and how CBAs can be used in GEF projects
- 3 Develop an **approach for tracking** of devolved responsibility and/or financial resources to the local level

3

LEARNING FROM CHALLENGES IN GEF PROJECTS



Background



80 percent

of completed GEF projects are successful

Evidence from less successful projects often

overlooked

Enhance performance through learning from both

successes

and failures

Purpose — objectives — data sources

Learn from challenges in underperforming operations

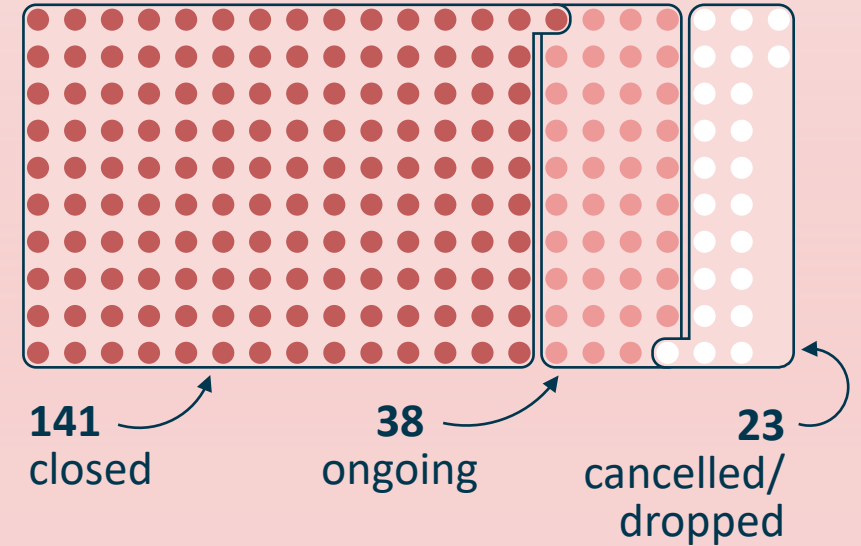


Analyze factors contributing to underperformance

Examine **risk mitigation** and **adaptive management** measures

Provide insights on how the GEF can enhance its role as a learning organization

202 UNDERPERFORMING PROJECTS



12
case studies


Document and literature review


Interviews

Methodological framework

PREPARATION / APPRAISAL

IMPLEMENTATION

CLOSURE / POST-CLOSURE / SCALE-UP

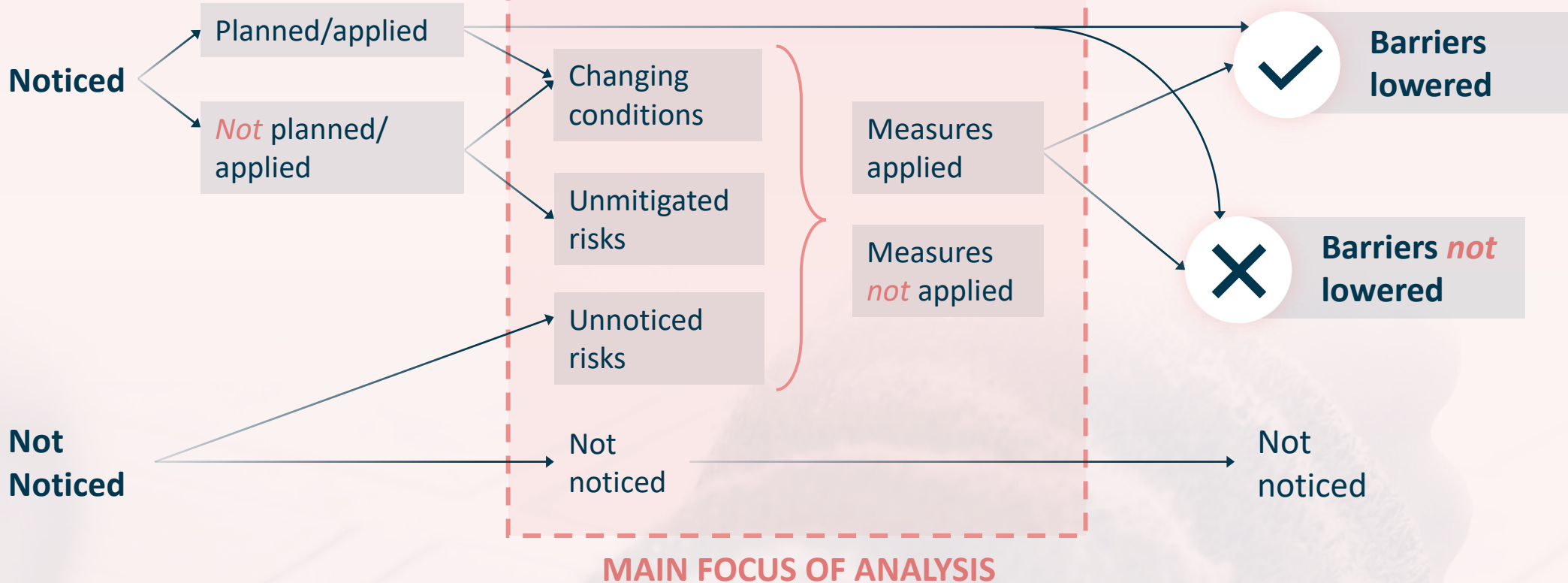
RISKS

MITIGATION

CHALLENGES

ADAPTATION

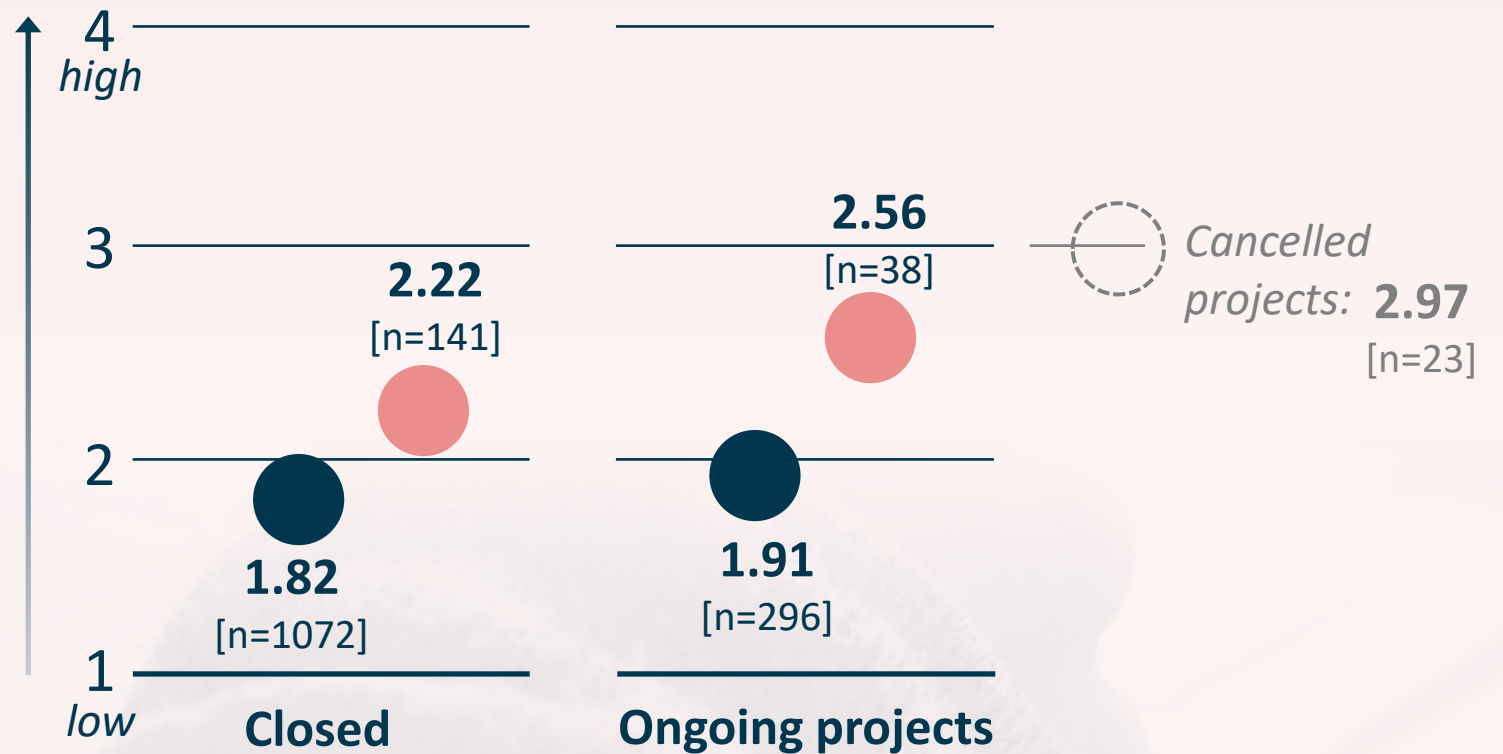
OUTCOMES OF **MITIGATION** AND **ADAPTATION**



Risks

Underperforming projects- slightly higher risk levels compared to **all GEF-supported** projects

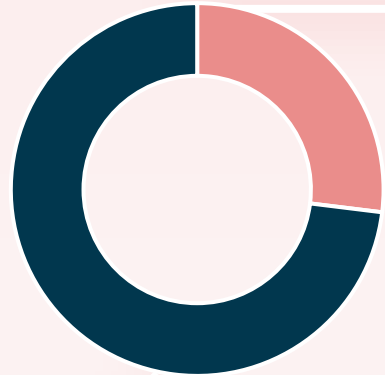
Risk rating



Adaptive Management Measures

Improved projects

implemented comprehensive restructuring



Improved
[n=38]

Unimproved
[n=103]

Improved

projects adapted to

82%
of challenges

Unimproved

projects adapted to

44%
of challenges

Nonlinear, non-uniform impact trajectories

FACTORS

- **Complexity**
- **Design characteristics**
- **Diligence in Implementation**
- **Known and unknown risks**
- **Adaptive management**

LESSONS

- 1** **Something can be learned** even from disappointing projects
- 2** **Effective adaptive management** can generate big wins
- 3** **Modest but thoughtful adaptive management** can consistently deliver small wins



1 Moldova: “Unsatisfactory” performance

GEF ID
5157

Transforming the market for Urban Energy Efficiency
by introducing Energy Service Companies (ESCO)



! CHALLENGES

- Low government ownership
- Corruption scandals
- Banking crisis and mistrust
- Inadequate policy and legal framework
- Overly ambitious objectives

↔ ADAPTIVE MANAGEMENT

- Terminated the project

📄 POST COMPLETION

- Design of a new project with similar objectives but a different approach

2 Paraguay: “Turned-around” performance

GEF ID
2690

Improving the Conservation of Biodiversity in Atlantic Forest



CHALLENGES

- Political crisis
- Economic boom disincentivizing forest restoration
- Limited government support and capacity



ADAPTIVE MANAGEMENT

- Shifted focus to Indigenous Communities
- Accounted for cultural specifics
- Changed execution arrangements



POST COMPLETION

- Catalyzed conservation of over 1 million hectares through new biosphere reserve
- Lasting partnership with Itaipu for further conservation



3 Liberia: “Turned-around” performance

GEF ID
8015

Enhancing Resilience of Montserrado County Vulnerable Coastal Areas to Climate Change Risks



CHALLENGES

- Political transitions
- Increased coastal erosion
- Disagreement between partners
- Design and budget not based on projections



ADAPTIVE MANAGEMENT

- Focused on one critically vulnerable site
- Synergized with Green Climate Fund
- Increased government co-financing
- Addressed community concerns



POST COMPLETION

- Demonstrated feasibility of coastal defense structures
- Built local capacity and strengthened institutions
- Catalyzed replication and scaling up in other coastal regions



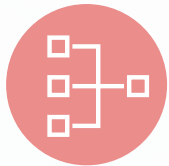
Becoming a stronger learning organization-Guiding Principles



Engaging with **complex problems** through **experimentation**



Regarding monitoring as a **learning tool**



Establishing conditions under which outcomes can/cannot be expected



Strategic pursuit of **ambition** and **innovation**



Setting **realistic expectations** aligned with problem complexity



Ensuring **sustained legal** and **political support**



Ensuring that decisions are informed by **contextual analysis**



Developing **credible measures** of the extent to which problems were solved

Recommendation



Reflect and apply the lessons/guiding principles relevant to the GEF, in the detailed action plans for knowledge and learning



4

Evaluation of GEF support to **CLIMATE INFORMATION AND EARLY WARNING SYSTEMS (CIEWS)**



Background and definitions

Fundamentals of

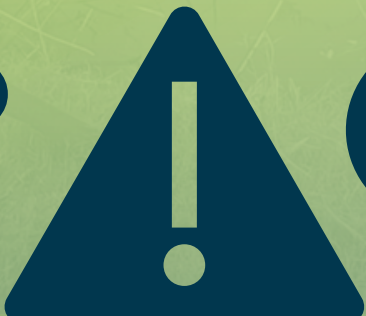
Climate Information

and Early Warning Systems (CIEWS)

Observations of weather data, and simulations of both past and future forecasting

Timely and effective information to take action

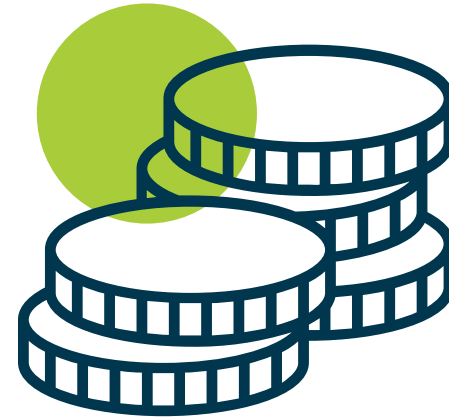
Combined systems to **collect, analyze, interpret, and disseminate** information about climate patterns and trends to provide timely warning of hazards



GEF Support



Elevated to one of the four priority themes in the 2022–2026 strategy



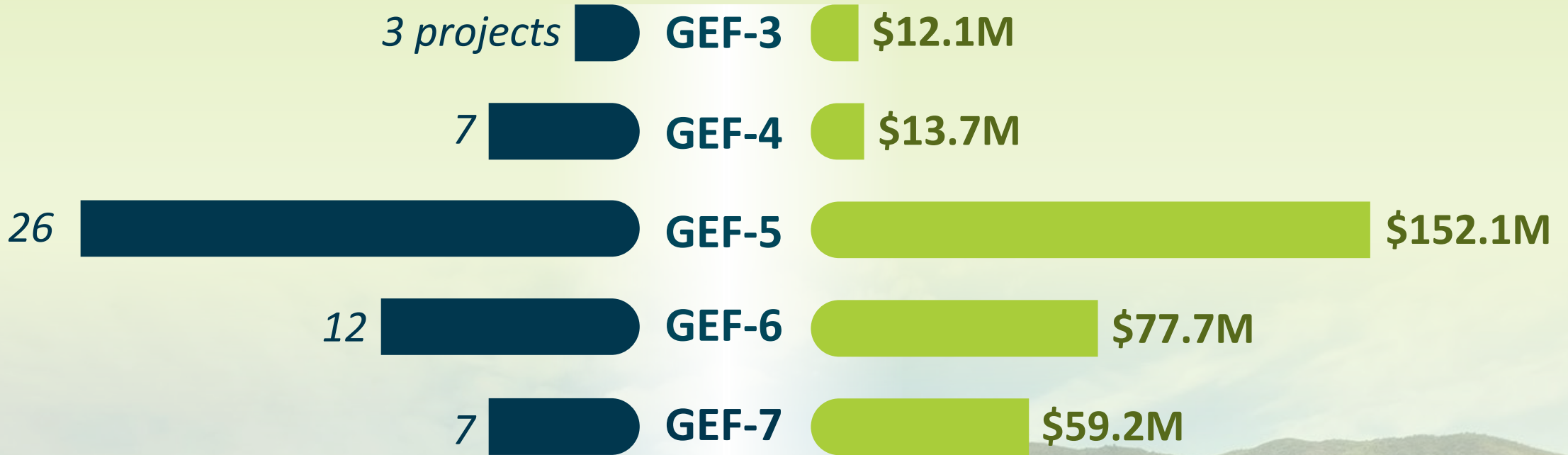
Investments in CIEWS for climate-related hazards



Portfolio

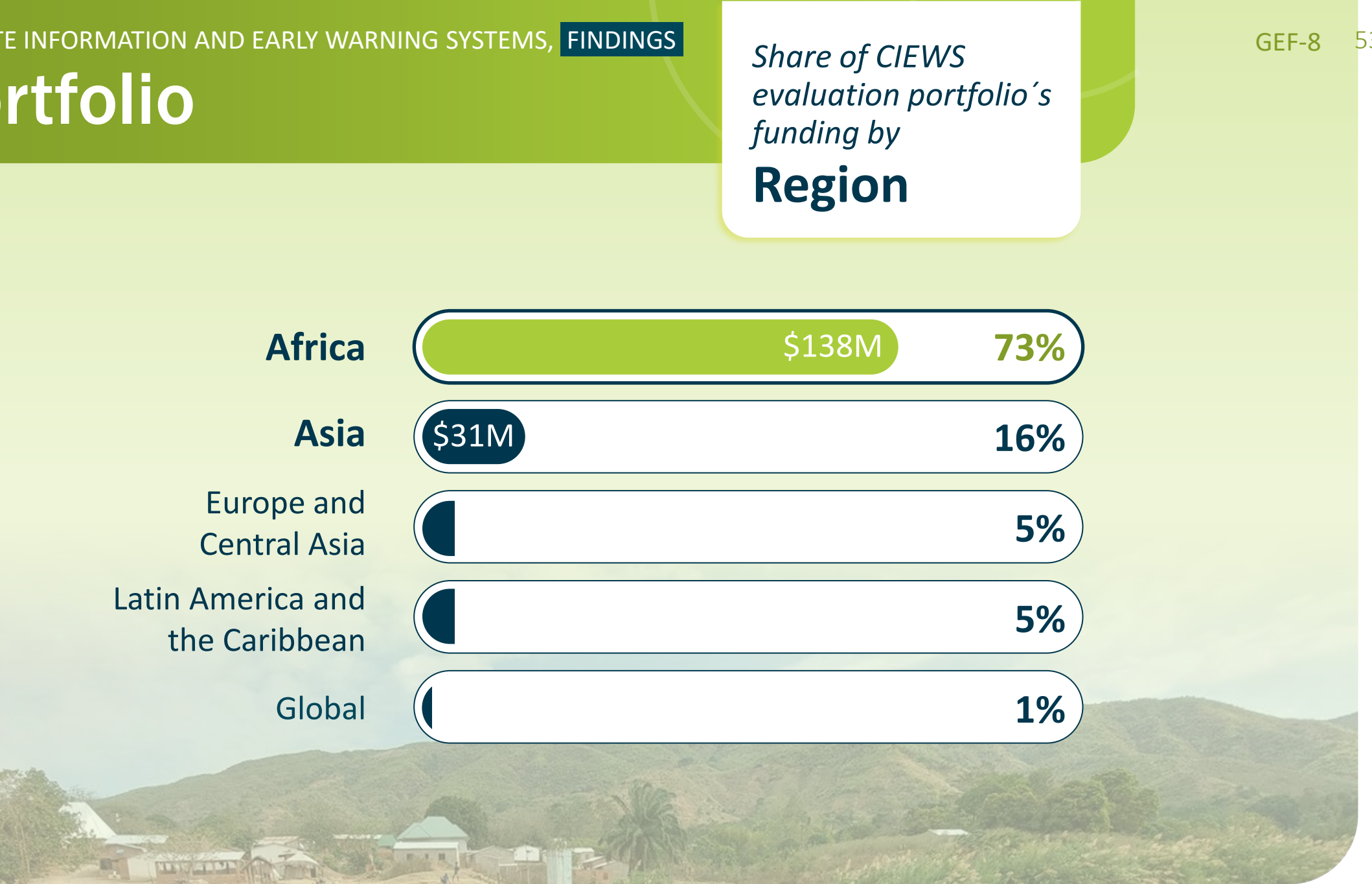
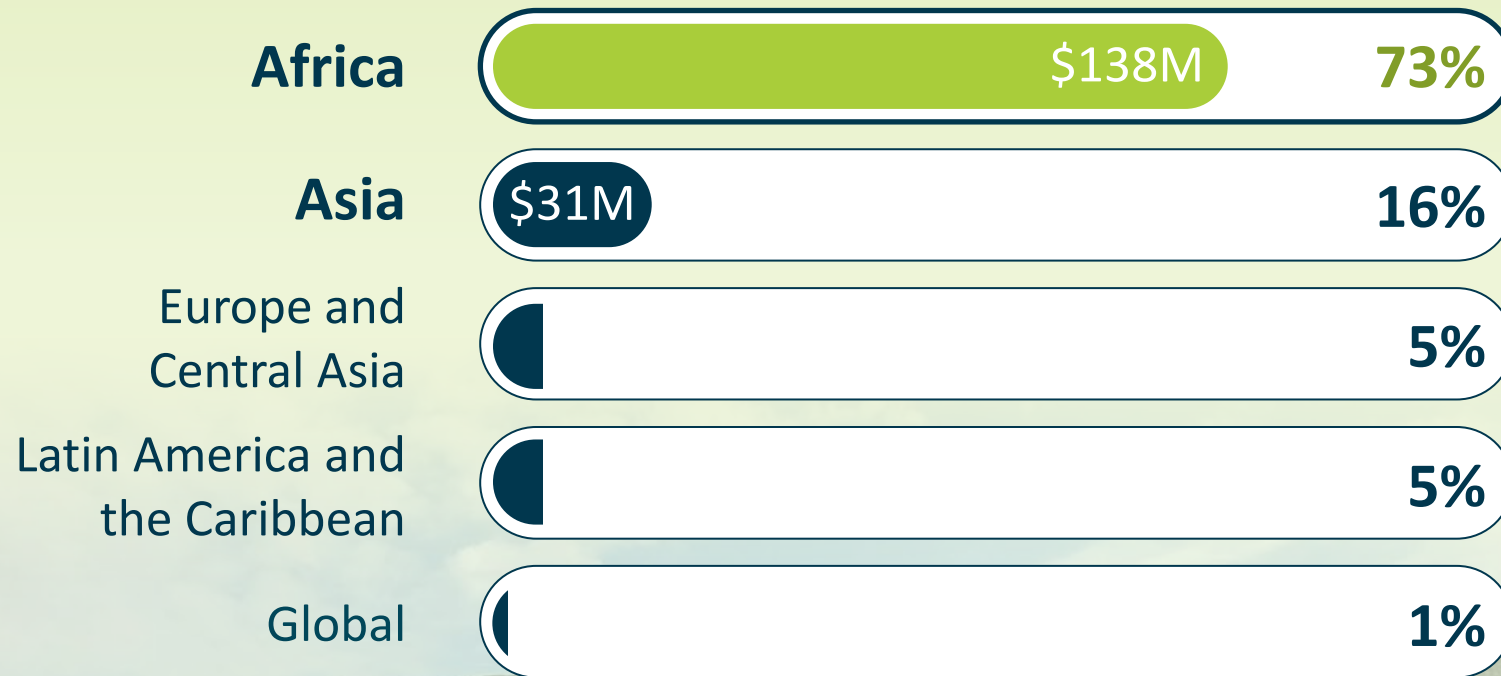
CIEWS evaluation portfolio by

GEF period



Portfolio

Share of CIEWS
evaluation portfolio's
funding by
Region



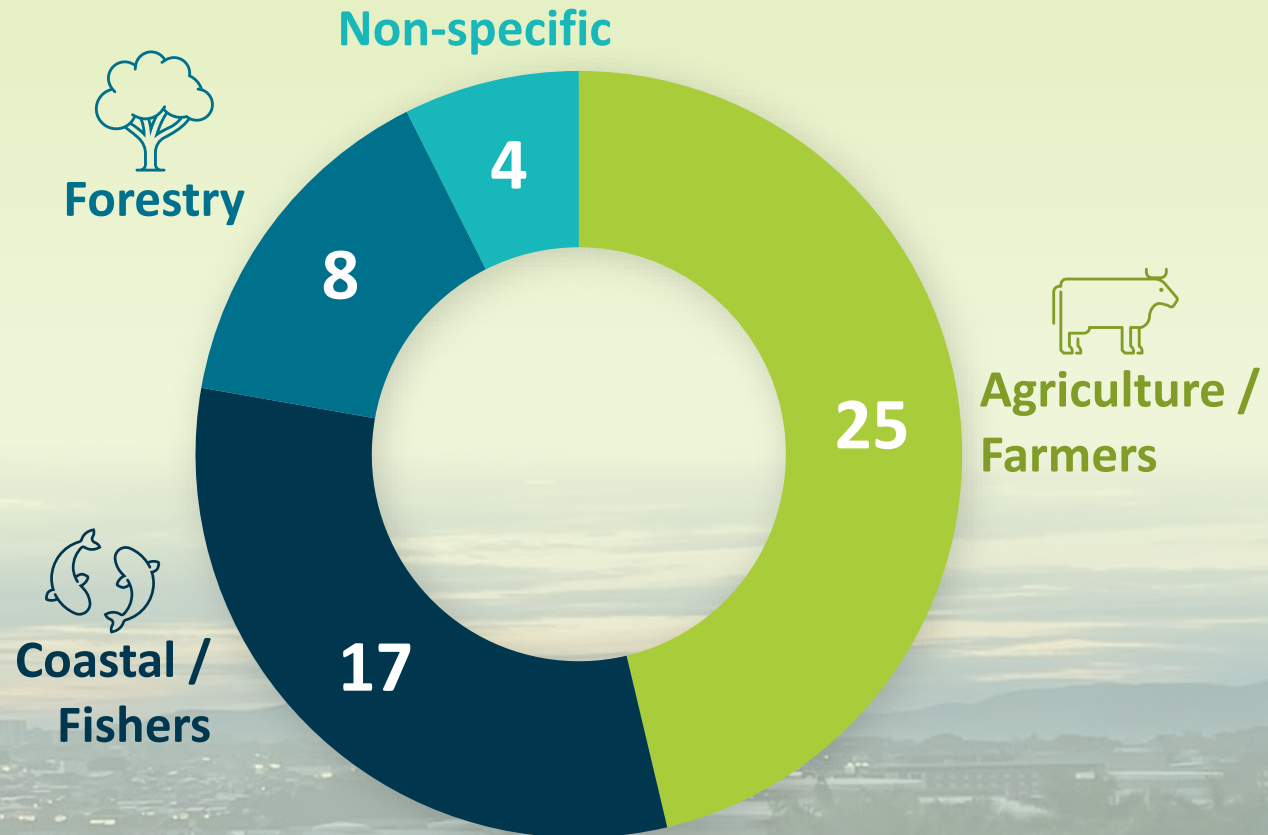
Relevance



- **Strong alignment with GEF and LDCF/SCCF strategies**
- **Demand-driven by countries' beneficiaries**

Relevance

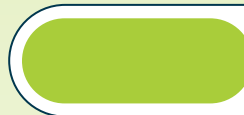
Main beneficiaries concentrated within the **agricultural** and **fisheries** sectors



Effectiveness

Outcome ratings of CIEWS projects

Highly Satisfactory



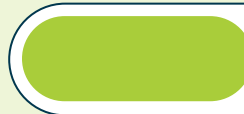
23%

Satisfactory



46%

Moderately
Satisfactory



23%

Moderately
Unsatisfactory

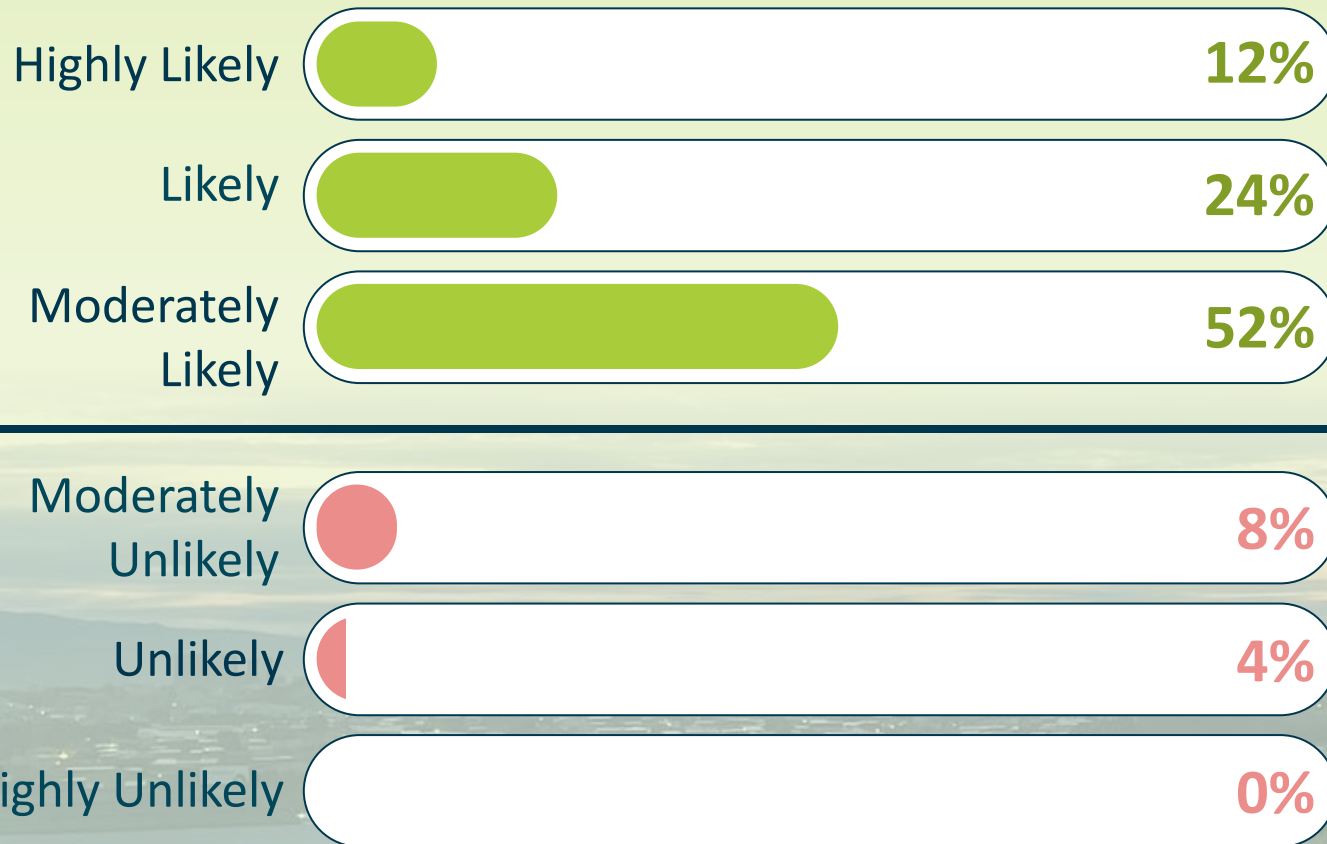


8%

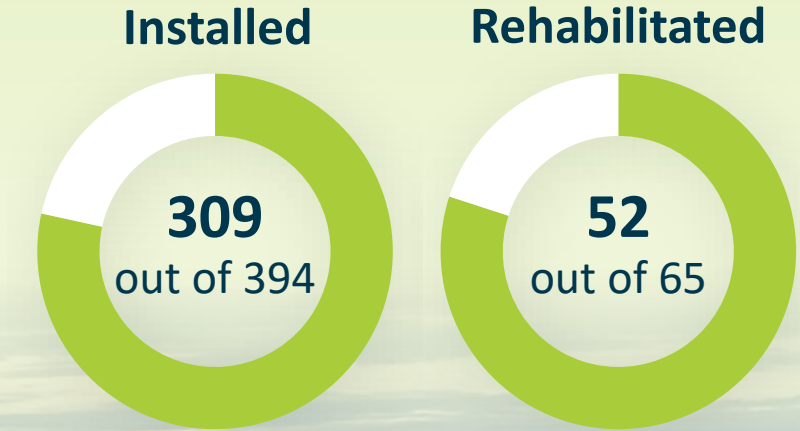


Sustainability

1 Sustainability ratings of CIEWS projects



2 Weather stations functional at completion



3 Critical "last mile" challenge persists



Impact (Example)

(SCCF,
GEF ID
6945)

Costa Rica: Strengthen capacities to address climate change risks

- **Early Warning System implemented** to mitigate the risk of floods in a region inhabited by a population of 55,000
- High level of **decentralization**



Impact (Example)

LDCF,
GEF ID
4991

Tanzania: Strengthen the climate monitoring capabilities and early warning systems

- Installation of **automatic weather stations** increased the accuracy, quality, and timeliness of data
- Farmers **increased their income**



Recommendations



- — **1** Shift focus from solely providing early warning information to **fostering early actions during disaster events**
- — **2** Continue **aligning indicators** with established good practices
- — **3** Continue to explore strategies to **enhance the financial sustainability** of CIEWS components



GEF COUNCIL MEETING 66

IEO Evaluation Update

February 2024



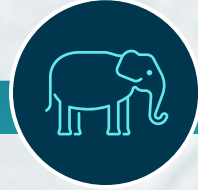
What's coming next



Co-financing
in the GEF



Assessment of
Portfolio Risk
in the GEF



Evaluation of the
Global Wildlife Conservation Program



Approach
paper to the **8th Comprehensive Evaluation of the GEF**



Private Sector Engagement in the GEF-Evidence from the **Commodities and Sustainable Cities Programs**



GEF IEO Work Program and Budget for FY 25