

Taking the lessons from Integrated Approach Pilots to the
GEF8 Amazon, Congo, and Critical Forest Biome
Integrated Program

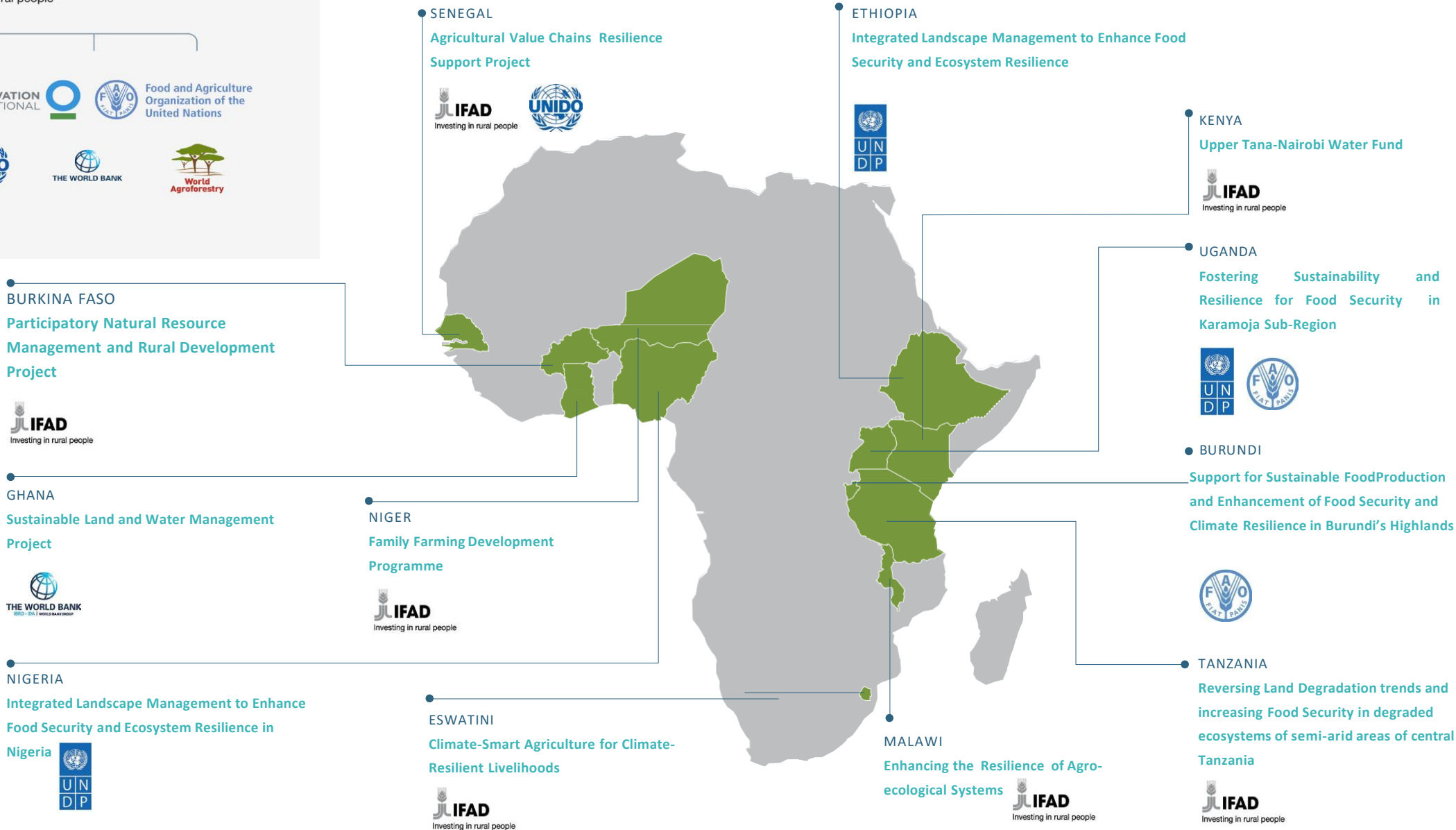
Resilient Food Systems Program

January 30, 2024

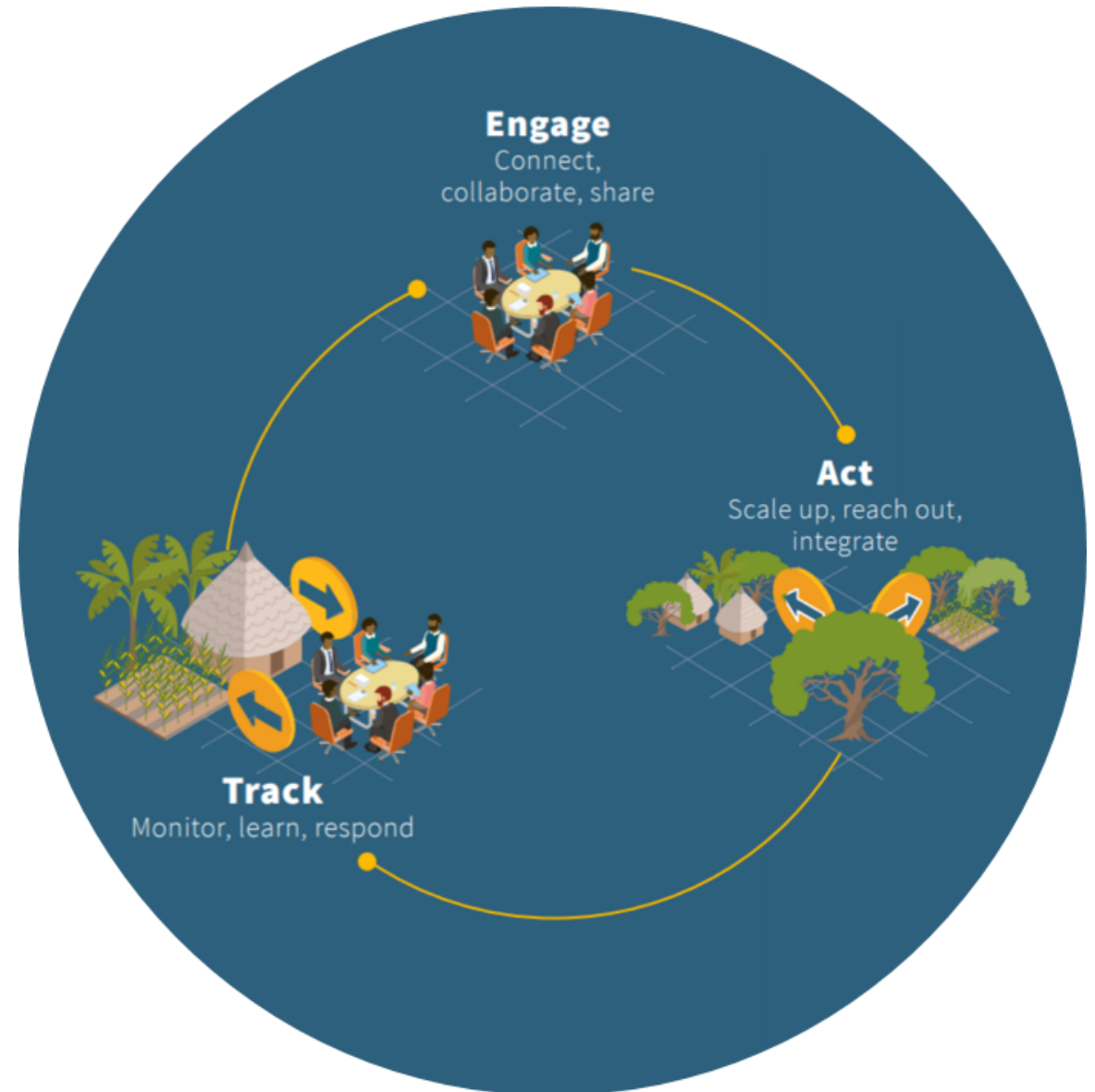


TWELVE COUNTRY PROJECTS

- Duration: 2017 – 2023
- Total investment: USD 116 million + 800 million co-financing



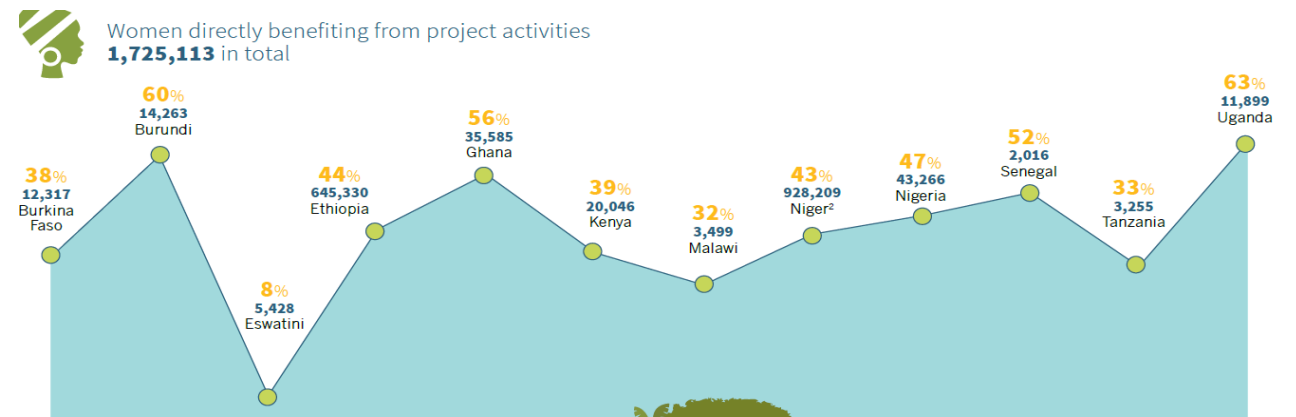
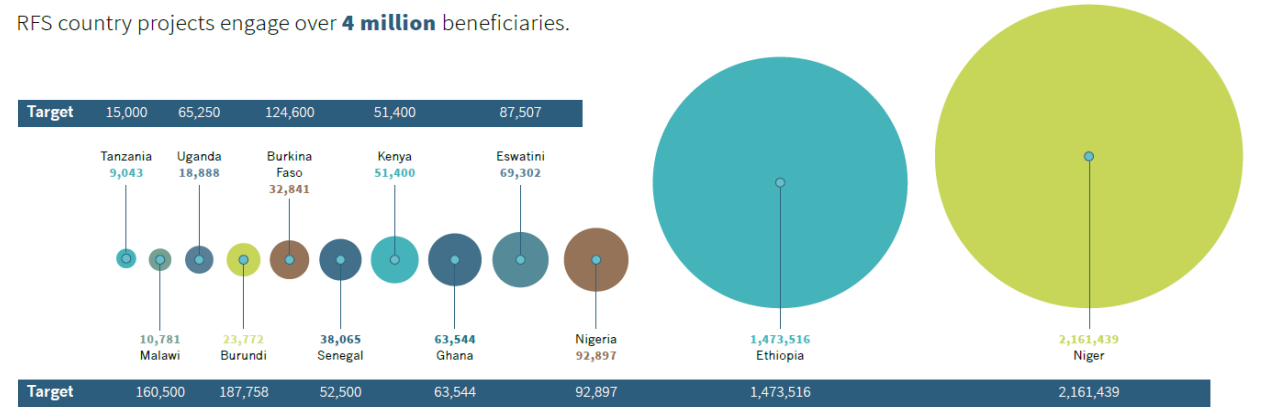
The 3 pillars of the RFS approach :



#RFS key results

- Restored 338,714 hectares of previously degraded land
- Engaged the private sector (PPP) and promoted 22 green value chains
- Established a strong peer-learning system and vibrant communities of practice
- Deployed 20 tools in supporting to the country projects
- Materialized 60% of co-financing commitment at design

RFS country projects engage over **4 million** beneficiaries.



Lessons learned from RFS



RFS additionality : Strong financial leveraging, Comparative advantages of several GEF agencies and other executing partners, Linkages to African and global initiatives, **Community of practice at regional level**

- **IFAD's role as Lead Agency** has created several opportunities for **synergies and partnerships** both spatially and vertically with strategic partners such as ESA through its EO4SD, African Risk Capacity, WOCAT, African Union
- **Regional Hub** project serves as an anchor for technical expertise and resources, as well as an active engine for improving learning among country projects
- Multipronged approach to engage with **different types of private entities** as a critical path along different food-related value chains
- **Strong peer-learning system** through regional workshops, learning labs, field trips, a virtual knowledge centre
- **Pivotal role of multi-stakeholder platforms (MSPs), internal communications and knowledge exchange** in dealing with complexity



Capitalizing RFS lessons for GEF8

- Early engagement with all programme agencies and country partners during the design
- **Building Strong knowledge management and M&E systems** : sensitization at design on relationship between M&E; KM; communications and advocacy; more provision for capacities and expertise
- Effective and enforceable **mechanisms and incentives for inter-agency cooperation and adjustments** of work plans when necessary
- **Reducing complexity with a limited number of Agencies and partners**, gradual expansion, possibly over several stages/cycles