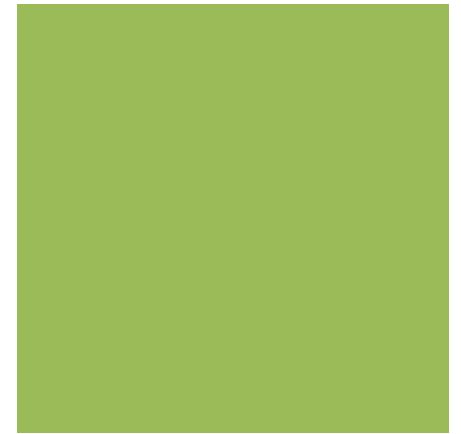




GEF Introduction Seminar
Washington, D.C.
January 2015



**The Scientific and Technical Advisory Panel (STAP)
of the Global Environment Facility (GEF)**



What is STAP?



- The Scientific and Technical Advisory Panel (STAP) of the Global Environment Facility (GEF) provides strategic and independent advice on projects, programs, and policies.
- STAP was established by the GEF instrument, in consultation with UNDP and the World Bank, in 1994, and is administered by the United Nations Environment Program (UNEP).
- STAP is supported by a Secretariat in Washington, which acts as the liaison between the Facility and the STAP.





Who is STAP?



Rosina Bierbaum
Chair
USA



Michael Stocking
Senior Advisor to STAP Chair
UK



Thomas Lovejoy
Senior Advisor to STAP Chair
USA



Jakob Granit
International Waters
Sweden



Brian Child
Biodiversity
South Africa



Ricardo Barra
Chemicals & Waste
Chile



Annette Cowie
Land Degradation
Australia



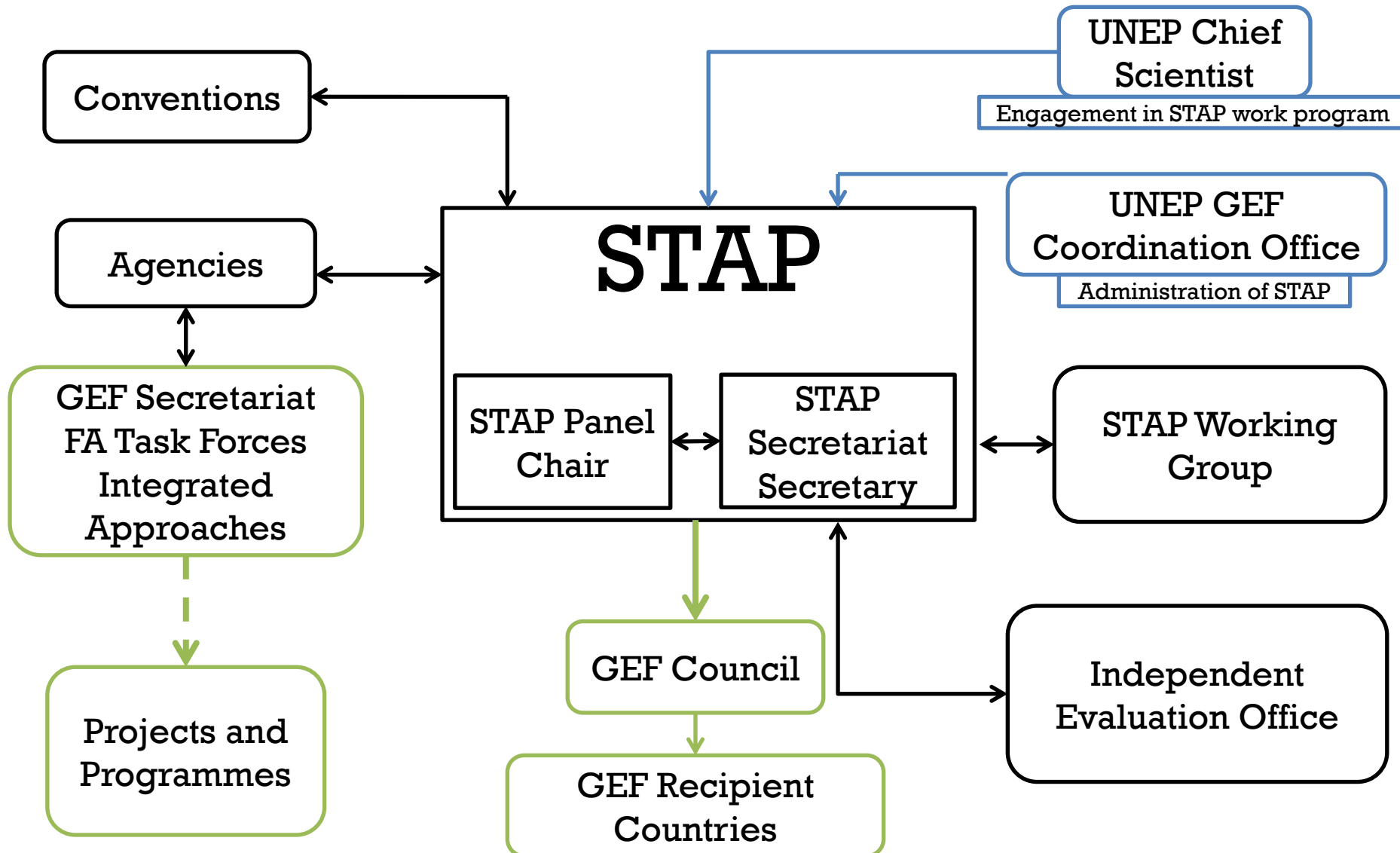
Anand Patwardhan
Climate Change Adaptation
India/USA



Ralph Sims
Climate Change Mitigation
New Zealand

STAP is supported by a Secretariat in Washington, D.C.

STAP's Engagement in the GEF Partnership





STAP Provides Strategic Advice

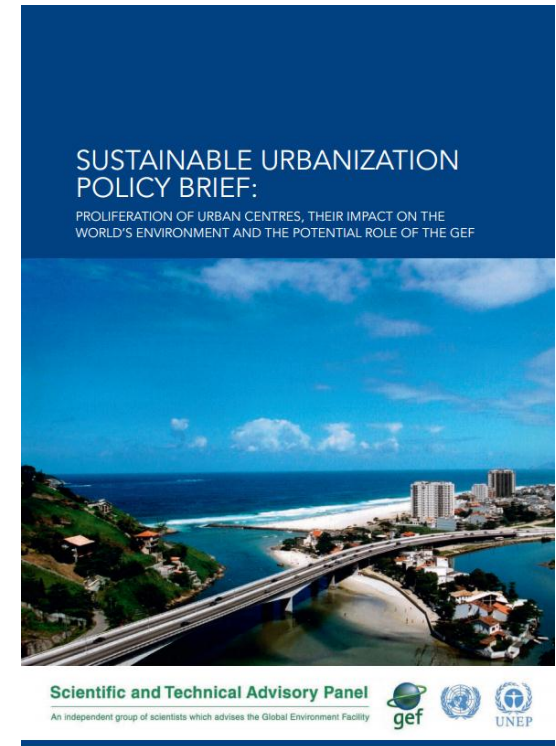
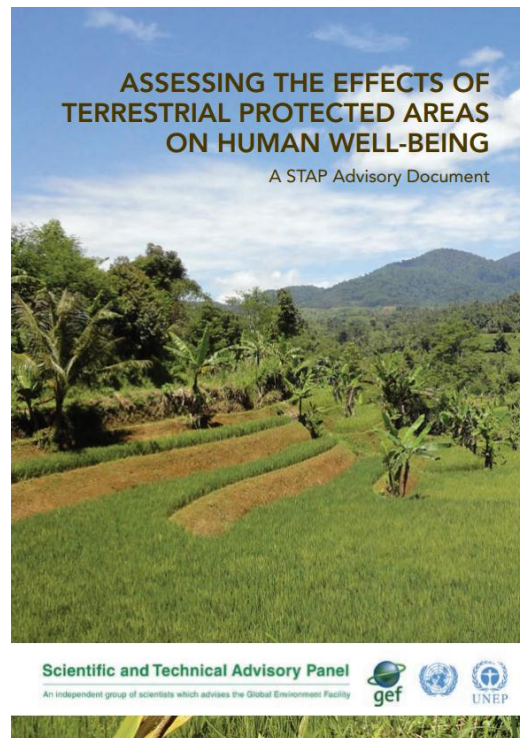
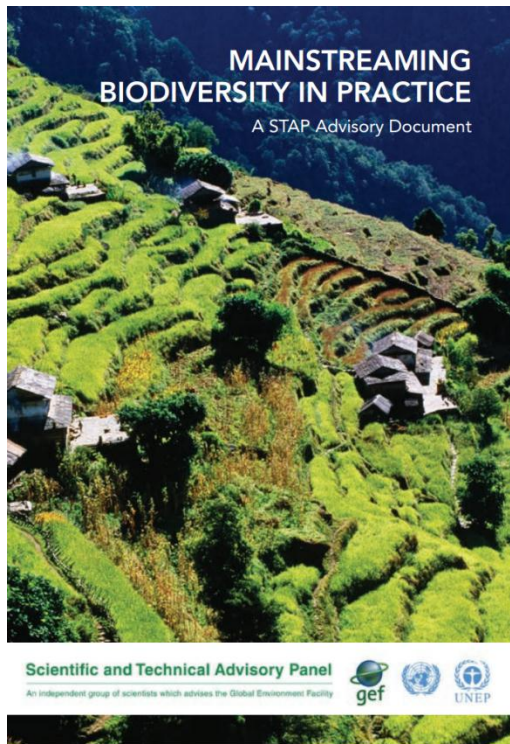


- Advise on **cross-cutting thematic areas**, such as adaptation to climate change, sustainable forest management, and chemicals management.
- In GEF-6, STAP is supporting the GEF Partnership on Integrated Approach Pilots and Knowledge Management (KM).
- Scans for emerging global environmental issues.





Recent STAP advisory products



www.stapgef.org

+ Operational advice: Projects and programs advice

- ❖ Develop **methodologies** for the use of implementation of GEF projects and programmes.
- ❖ Help ensure the **scientific and technical quality** of GEF projects and programmatic approaches.
- ❖ Collaborate with the **GEF Independent Evaluation Office** (e.g. focal area studies)



+ Overview of STAP project proposals (PIF) screening process

- STAP screens all full-size GEF projects at entry into the GEF project cycle.
- Intended to provide an assessment to the GEF Council regarding the scientific and technical soundness of each major proposal.
- Three possible outcomes:
 - CONCUR
 - MINOR ISSUES TO BE CONSIDERED
 - MAJOR ISSUES TO BE CONSIDERED





Collaborating with the Conventions

Externally, STAP interacts in a complementary manner with the scientific and technical bodies of:



- the Convention on Biological Diversity



- the Framework Convention on Climate Change



- the Convention to Combat Desertification



- the Stockholm Convention on Persistent Organic Pollutants



- the Montreal Protocol on Substances that Deplete the Ozone Layer



Thank you!

Thomas Hammond

STAP Secretariat

Thomas.Hammond@unep.org

www.stapgef.org