

Global Environment Facility Introduction Seminar

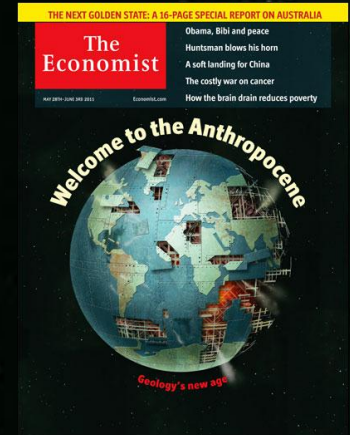


GEF-6 Programming
Priorities
Tuesday January 20th
10:15 – 10:45

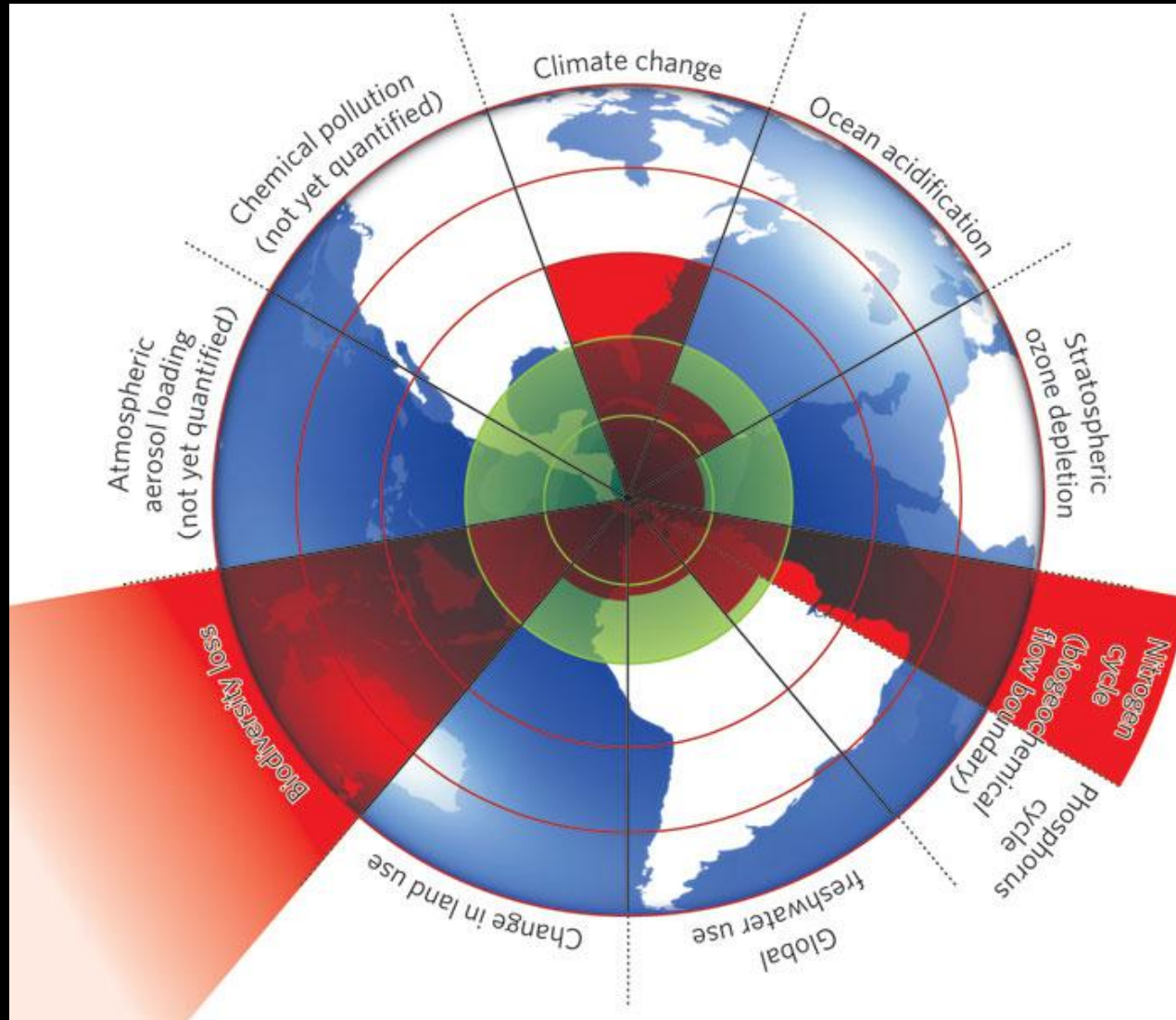
Gustavo Fonseca – Director of Programs

January 20 - 22, 2015

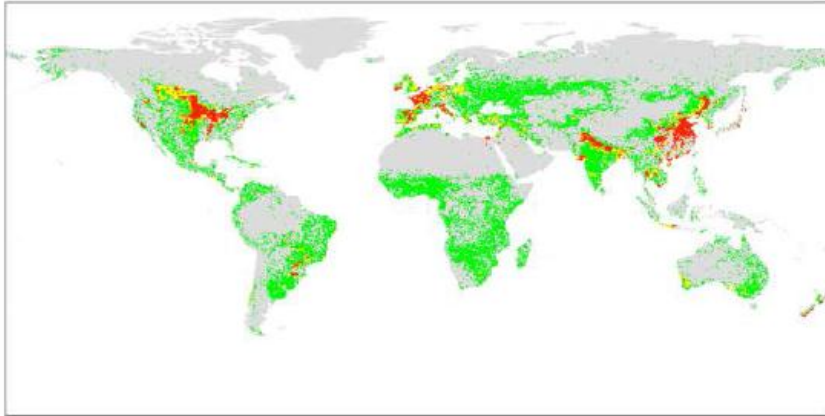
Welcome to the Anthropocene



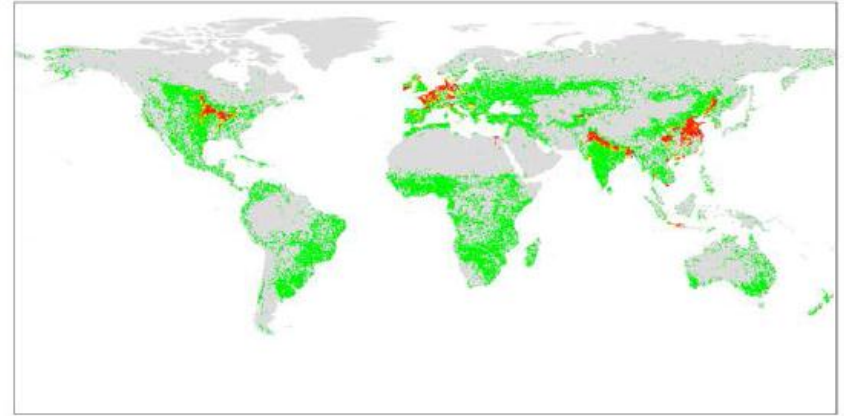
Transgressing the Safe Operating Space



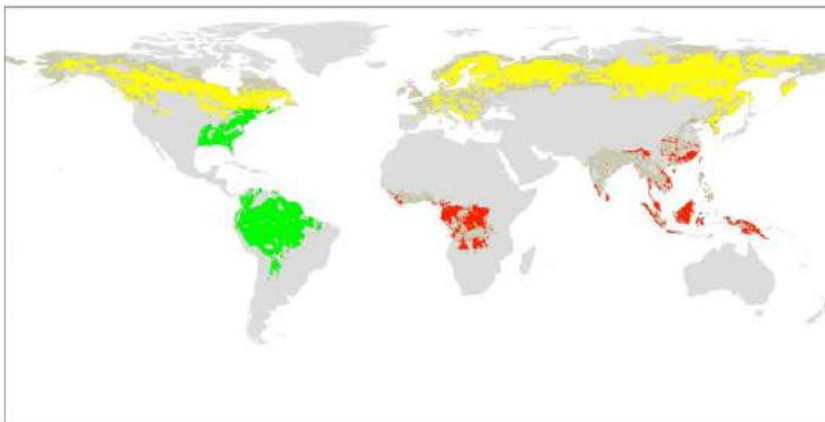
A Phosphorus



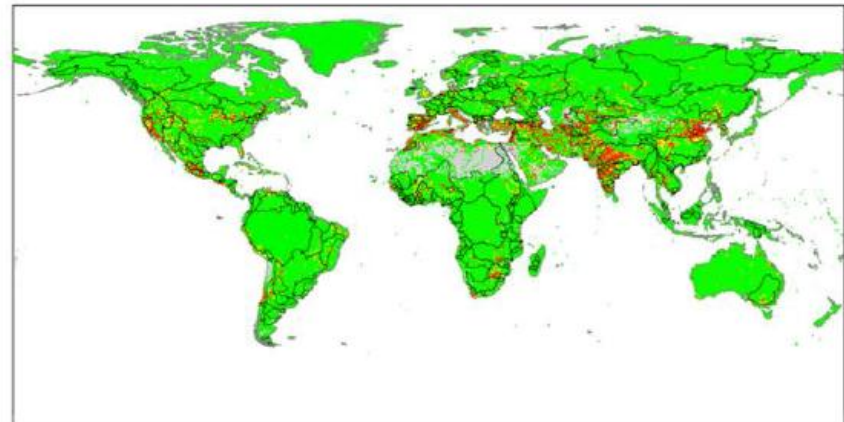
B Nitrogen



C Land-system change



D Freshwater use



■ Beyond zone of uncertainty (high risk) ■ In zone of uncertainty (increasing risk) ■ Below boundary (safe)



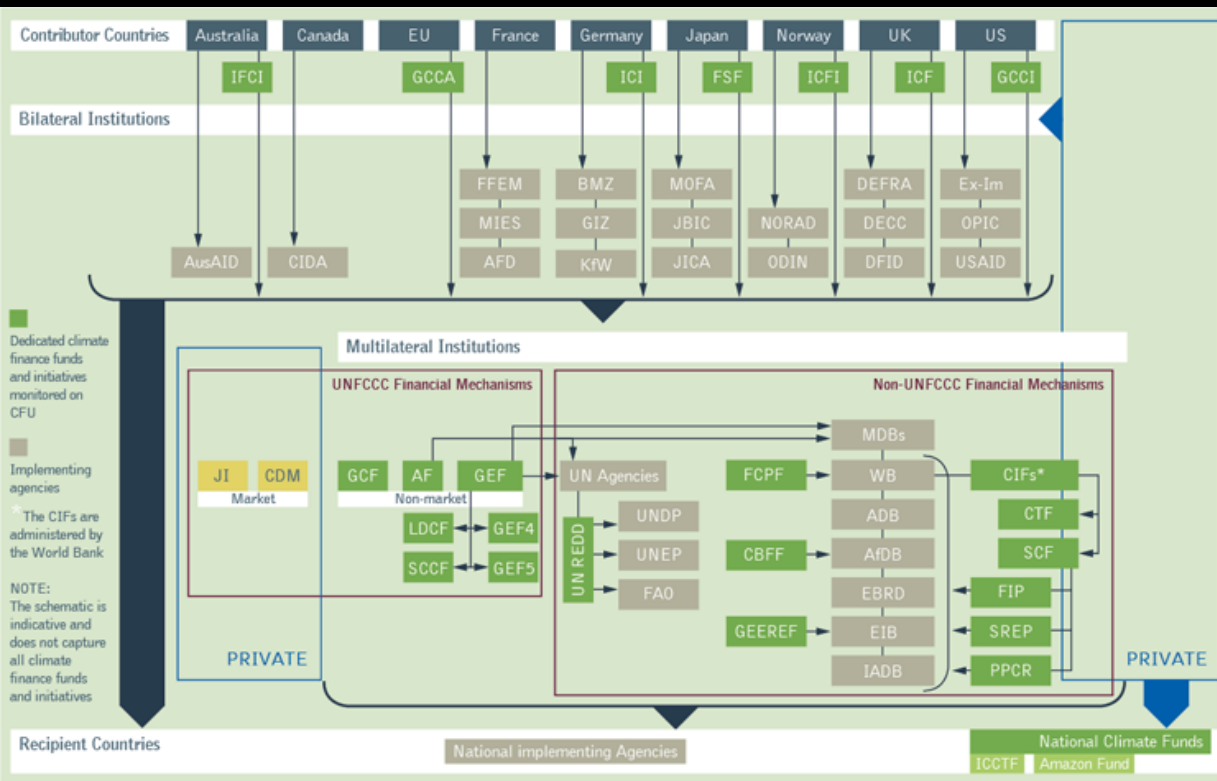
Systemic Drivers



Systemic Solutions



Climate Finance Architecture



Can you find the GEF?

Why We Are Changing

- Deteriorating global environment
- More focus on drivers, impact, leveraging and integration
- Evolving international environmental finance architecture
- Evolving Sustainable Development Framework

GEF2020 Strategy

A new strategy of the GEF to support transformational change and achieve impacts at scale.

Outline of GEF2020 Strategy

- Focus on drivers of environmental degradation
- Deliver integrated solutions, given that many global challenges are interlinked
- Forge close relationships with a variety of stakeholders
- Finance resilience and adaptation
- Ensure complementarity and synergies in climate finance



GLOBAL ENVIRONMENT FACILITY
INVESTING IN OUR PLANET

Integrated Thinking

- Drivers of environmental degradation are linked in complex ways
- Single issue analysis leads to “silo” thinking - Systems analysis leads to integrated thinking
- Integrated thinking inspires creative and inclusive solutions that deliver environmental benefits aligned with GEF focal area objectives
- Examples: Water, Food & Energy Nexus; Urban Environments; Integrated Approach Pilots



GLOBAL ENVIRONMENT FACILITY
INVESTING IN OUR PLANET

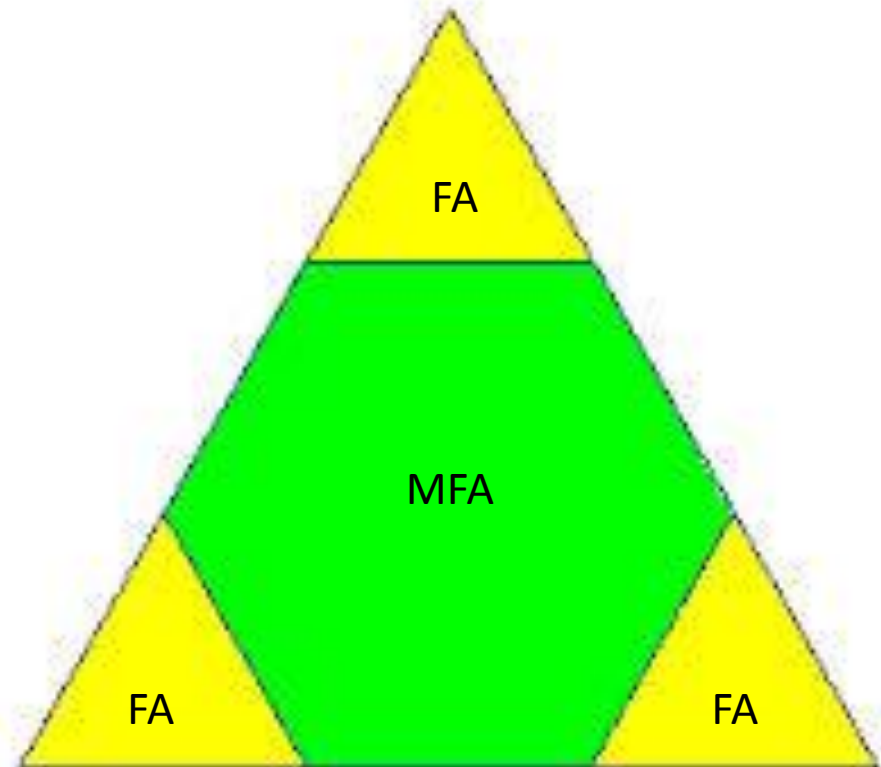
GEF-6 Programming

Systemic Solutions for System Problems

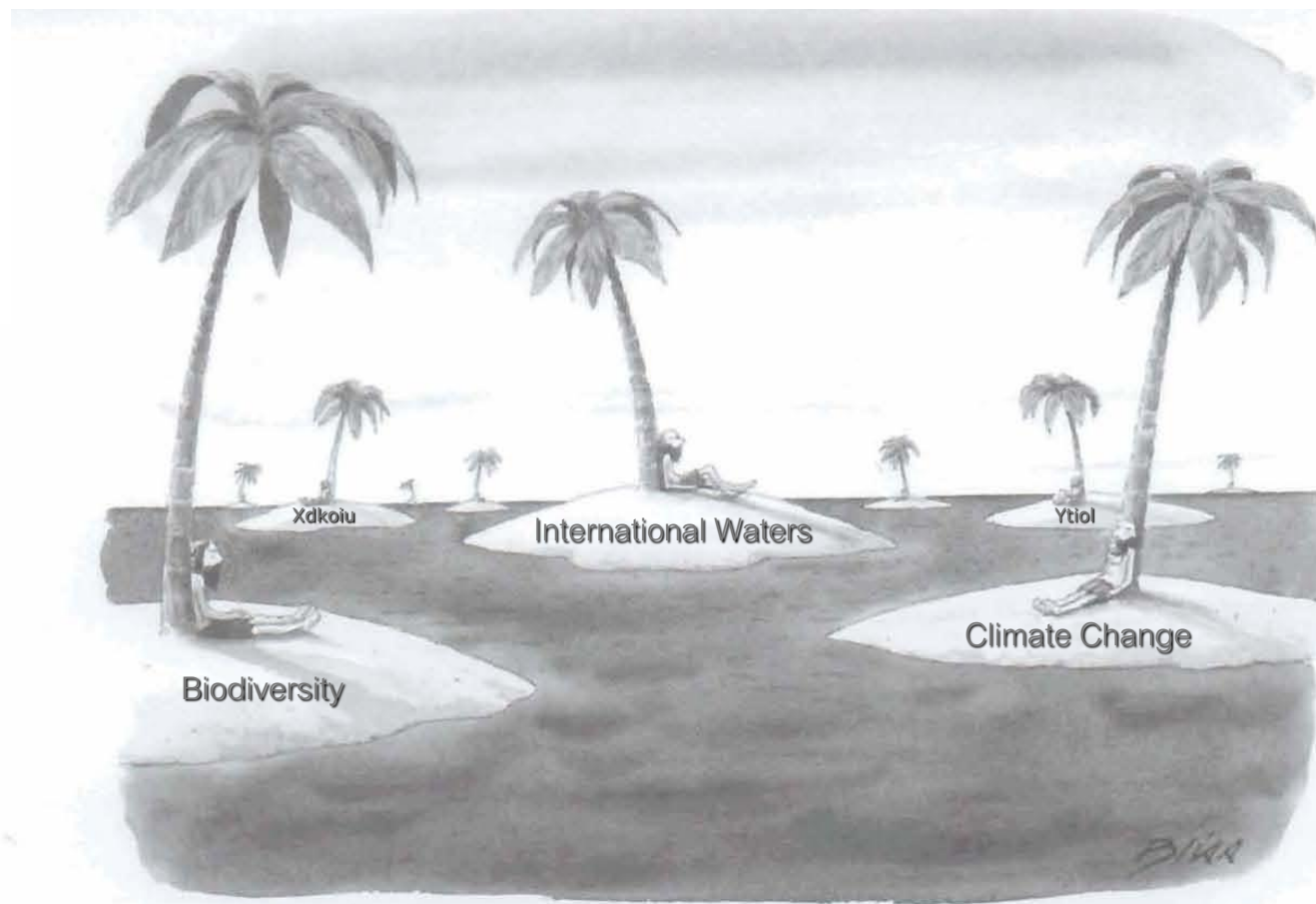


Focal Area Strategies

- Using integrated thinking, propose creative and inclusive solutions
- Solutions should deliver results that align with GEF-6 focal area objectives
- MFA projects on the rise
- Single FA projects will still be necessary in specific contexts



GLOBAL ENVIRONMENT FACI
INVESTING IN OUR PLANE



DANCE OF THE SILOS

Wrong approach

Wrong focal area

Wrong design

Wrong priority

Wrong eligibility

Global Environmental Benefit

SAME OLD, SAME OLD, I WANT MY MONEY BACK

DANCE OF THE SILOS

Wrong approach Wrong focal area

Wrong
design

Wrong
priority

Wrong
eligibility

SAME OLD,
SAME OLD,
I WANT MY
MONEY
BACK

Global
Environmental
Benefit

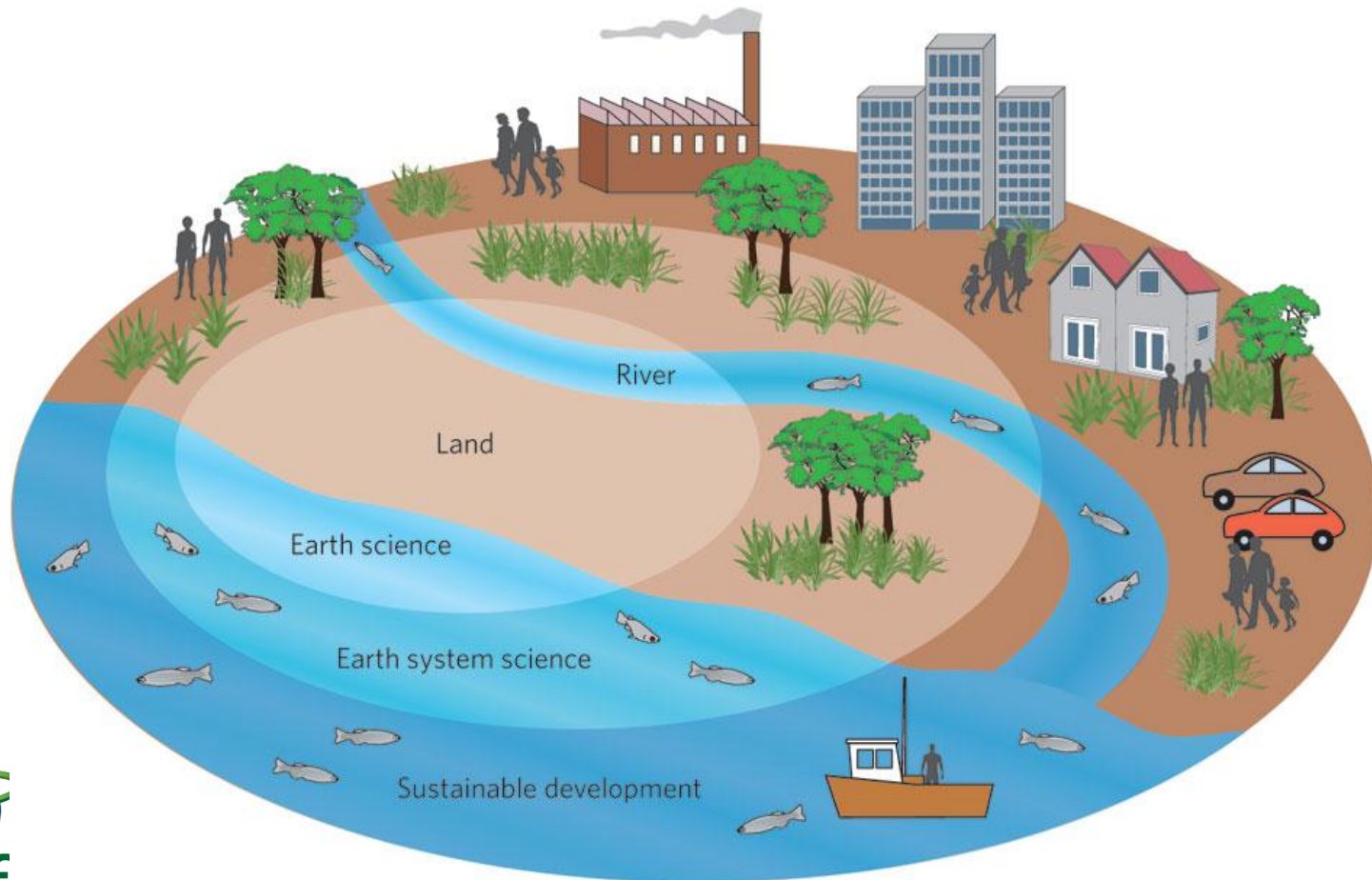
GEF Programs Unit

- Consolidation of all programming of GEF resources in a single operating unit
- Enables better identification of GEF-wide investment opportunities deriving from country allocations and associated focal areas according to country and regional contexts
- Brings resource programming closer to regions and countries through regional teams as opposed to focal area clusters




GLOBAL ENVIRONMENT FACILITY
INVESTING IN OUR PLANET

Integrated Approach Pilots: Charting a New Frontier for the Global Environment



GEF-6 Integrated Approach Pilots (IAP)

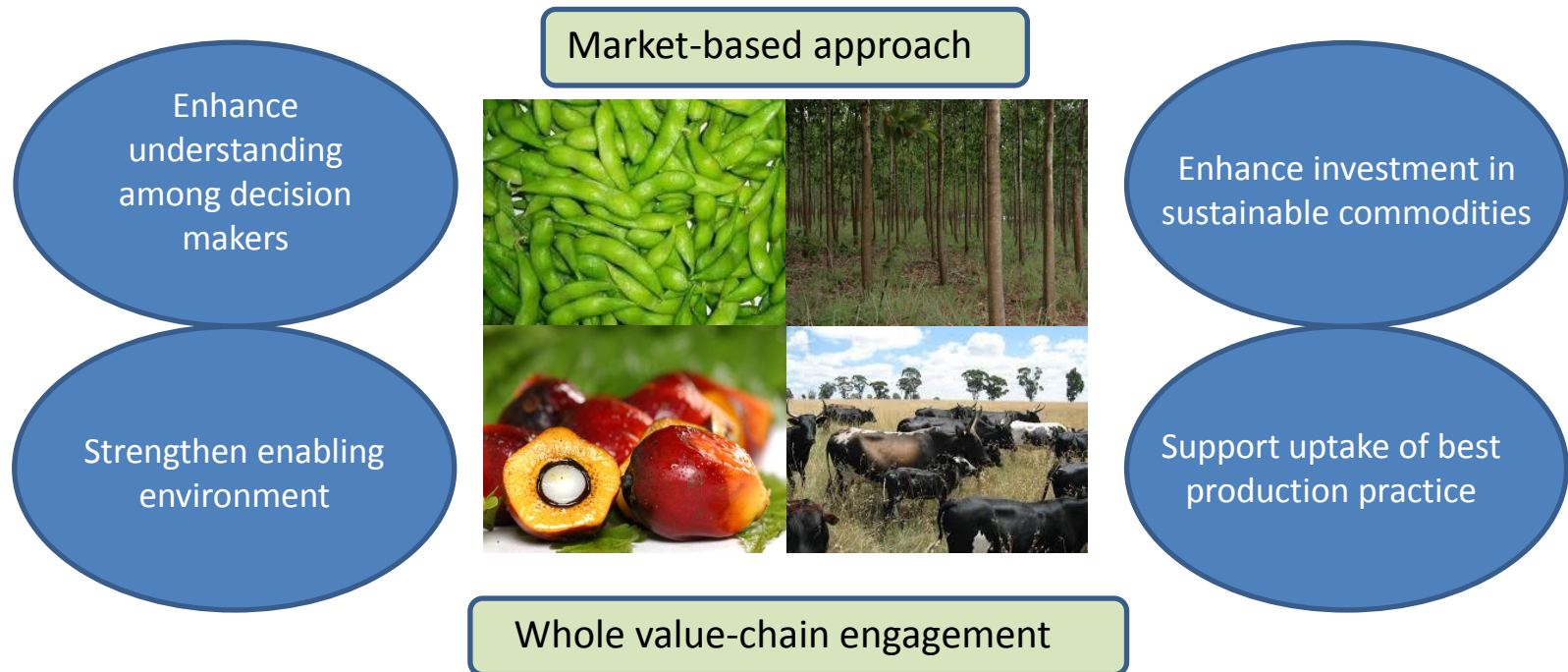
- 
- 
1. Taking Deforestation out of Commodities Supply Chain
 2. Food Security in Sub-Saharan Africa
 3. Sustainable Cities

- ✓ Deliver global environmental benefits beyond single GEF focal area
- ✓ Time-bound nature of concrete impact
- ✓ Relevance for Sustainable Development
- ✓ Innovative way to support action at multiple levels based on partnership



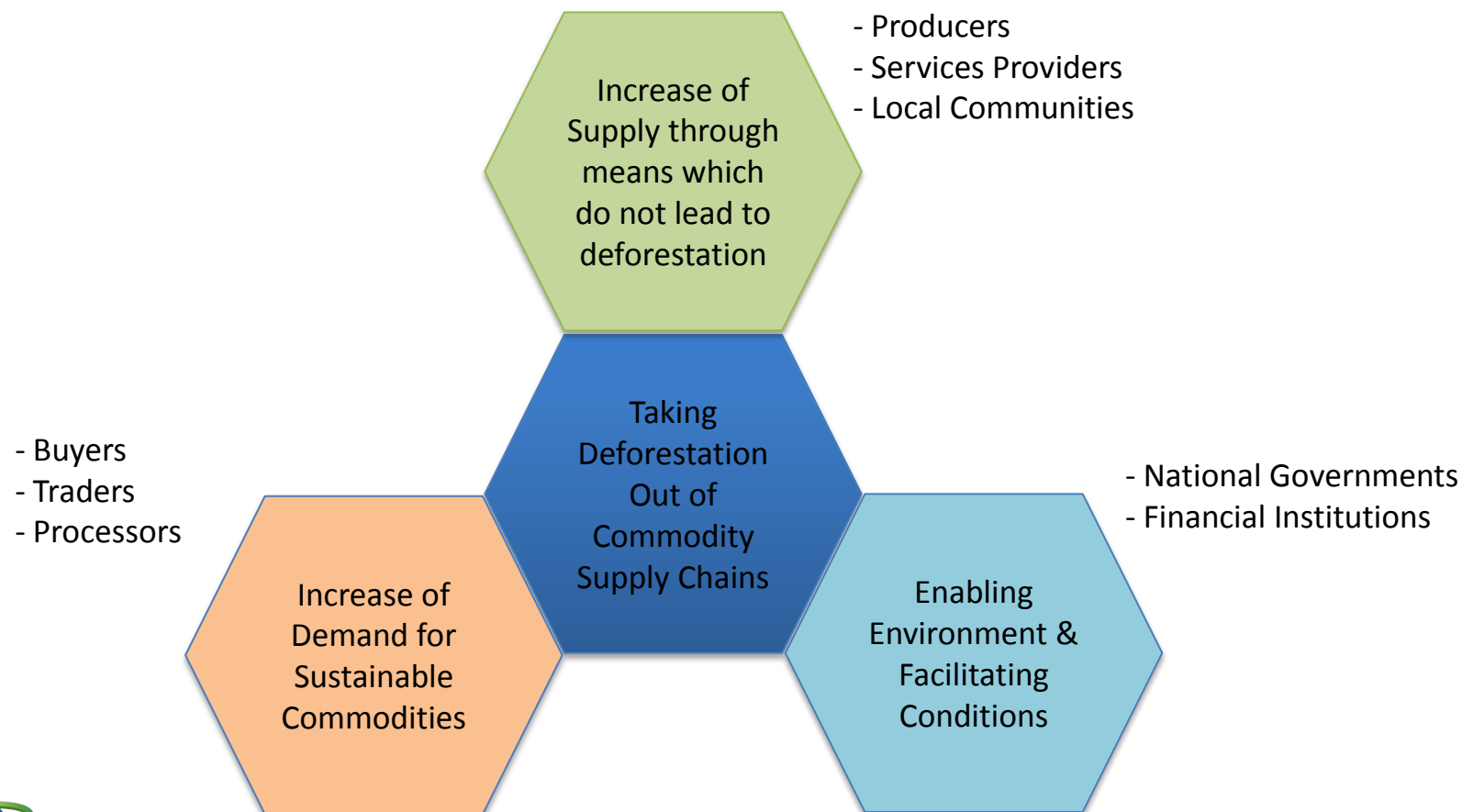
IAP 1: Taking Deforestation Out of Commodity Supply Chains

Linking long-term national sustainable development policies and programs with day-to-day value chain management approaches



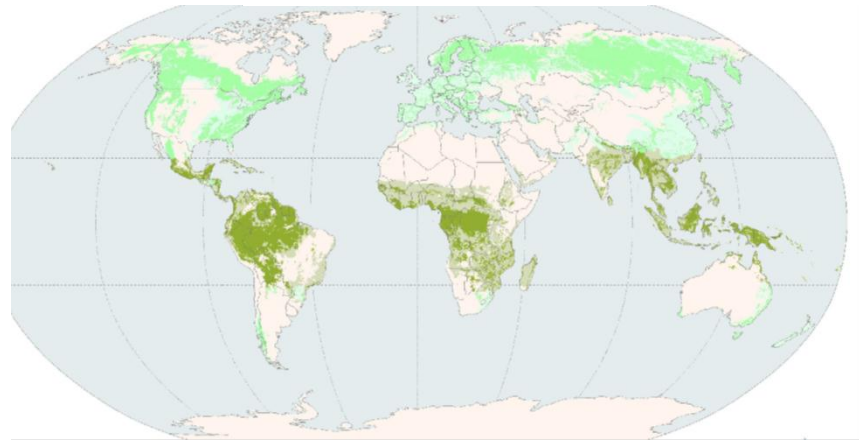
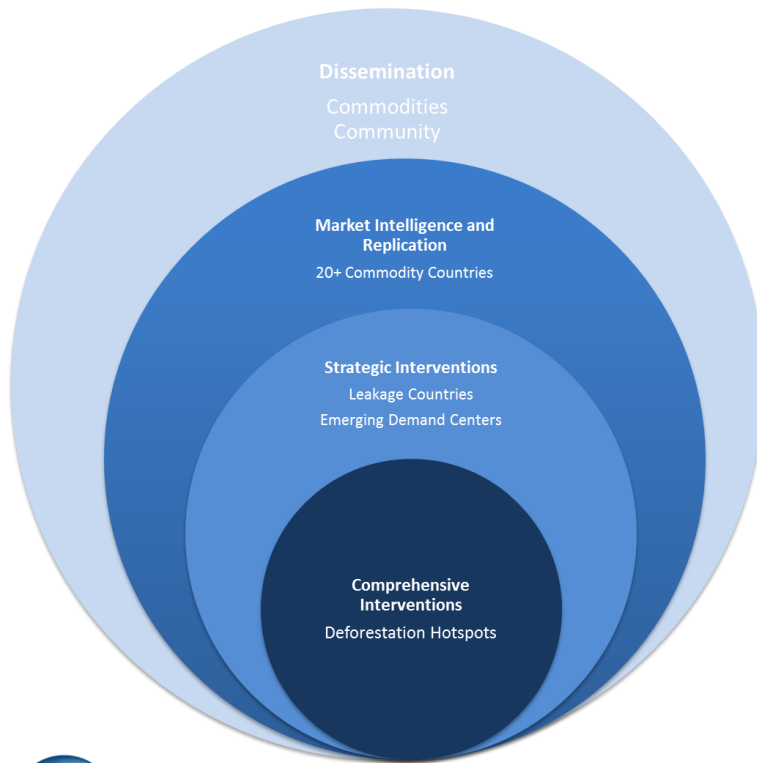
GLOBAL ENVIRONMENT FACILITY
INVESTING IN OUR PLANET

Components of Commodities IAP



GLOBAL ENVIRONMENT FACILITY
INVESTING IN OUR PLANET

Global Consortium for Commodities IAP



GLOBAL ENVIRONMENT FACILITY
INVESTING IN OUR PLANET

Programming Process

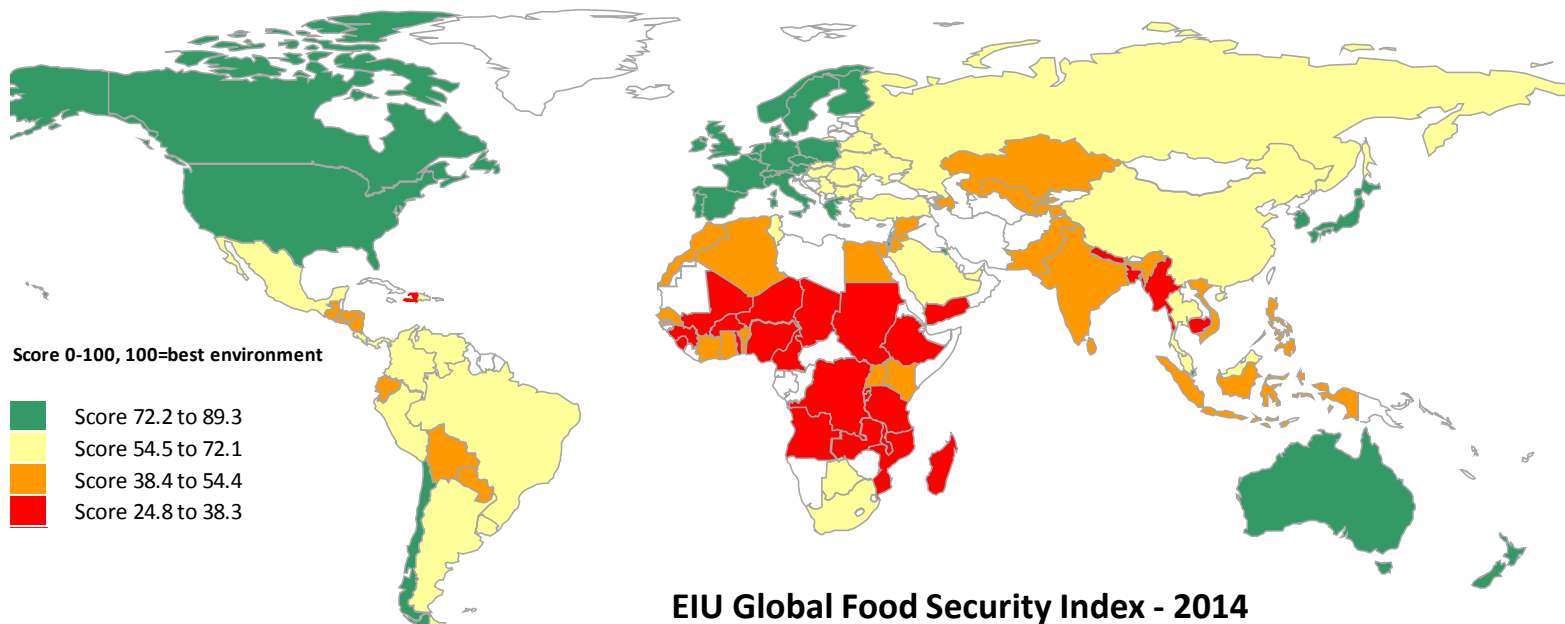
- June 2014 – Theory of Change prepared and potential approaches considered by agencies and GEFSEC
- July 2014 – Agencies met to agree on ToC and outline structure
- August 2014 – Implementation structured agreed between agencies
- September onwards – Preliminary Steering Group established, regular fortnightly SG telephone conference calls + specific work groups
- Partners joining, eg. The Gordon and Betty Moore Foundation
- Stakeholder discussion events are being programmed in Indonesia, Brazil and China within the next 5 weeks involving governmental, private sector, civil society stakeholders, as well as other active organizations and existing initiatives and donors.



GLOBAL ENVIRONMENT FACILITY
INVESTING IN OUR PLANET

IAP 2: Food Security

OVERALL SCORE



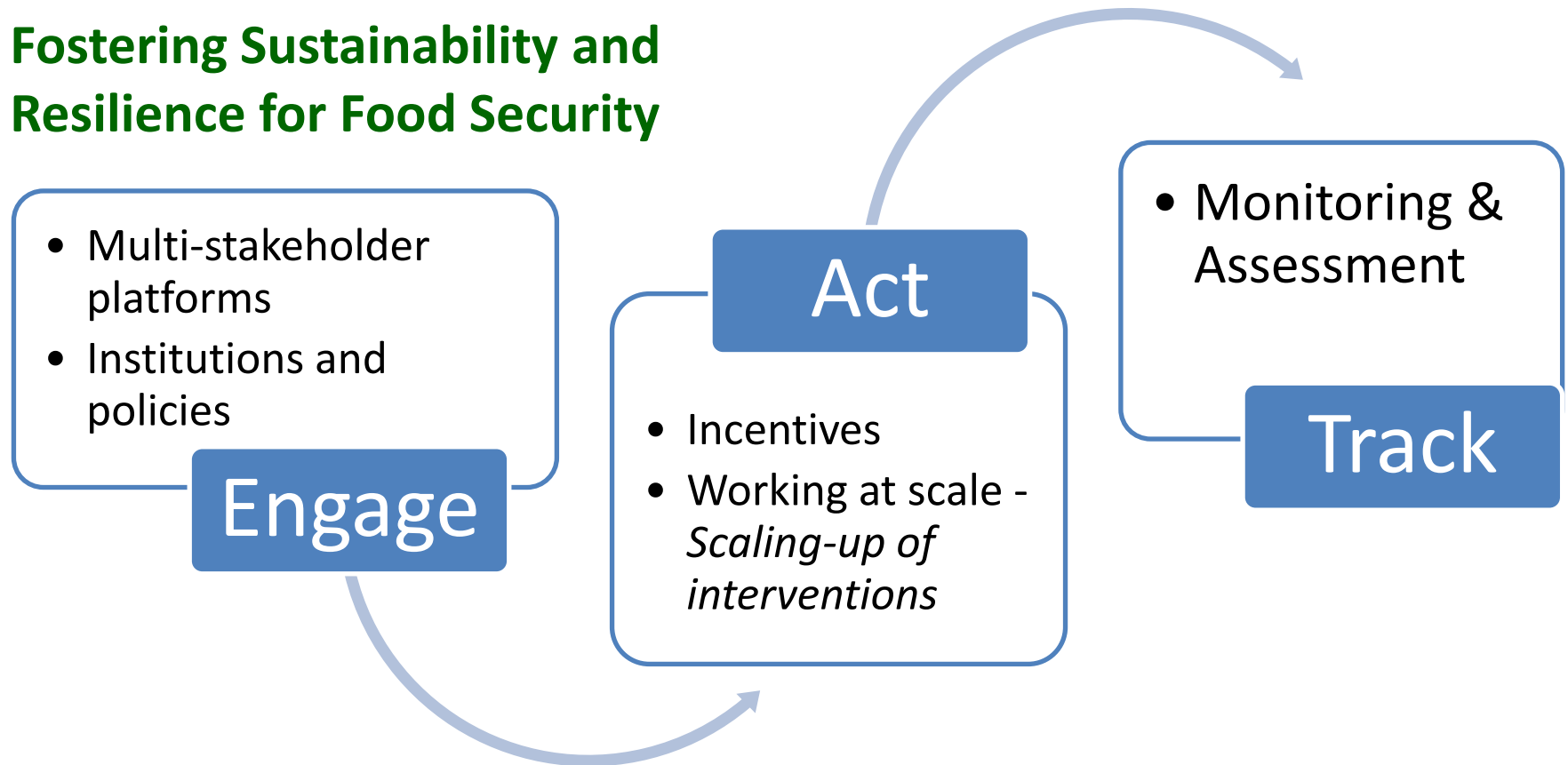
Potential for Transformational Impact

- **Agriculture and Food Security** → *major development priorities*
- **CAADP** → *pillars on food security, land and water management*
- **Evergreen Agriculture** → *focus on smallholder farmers and food value chains*

Opportunity for integration of Ecosystem Services → sustainability and resilience

An Integrated Approach

Fostering Sustainability and Resilience for Food Security



Adaptive Management and Learning



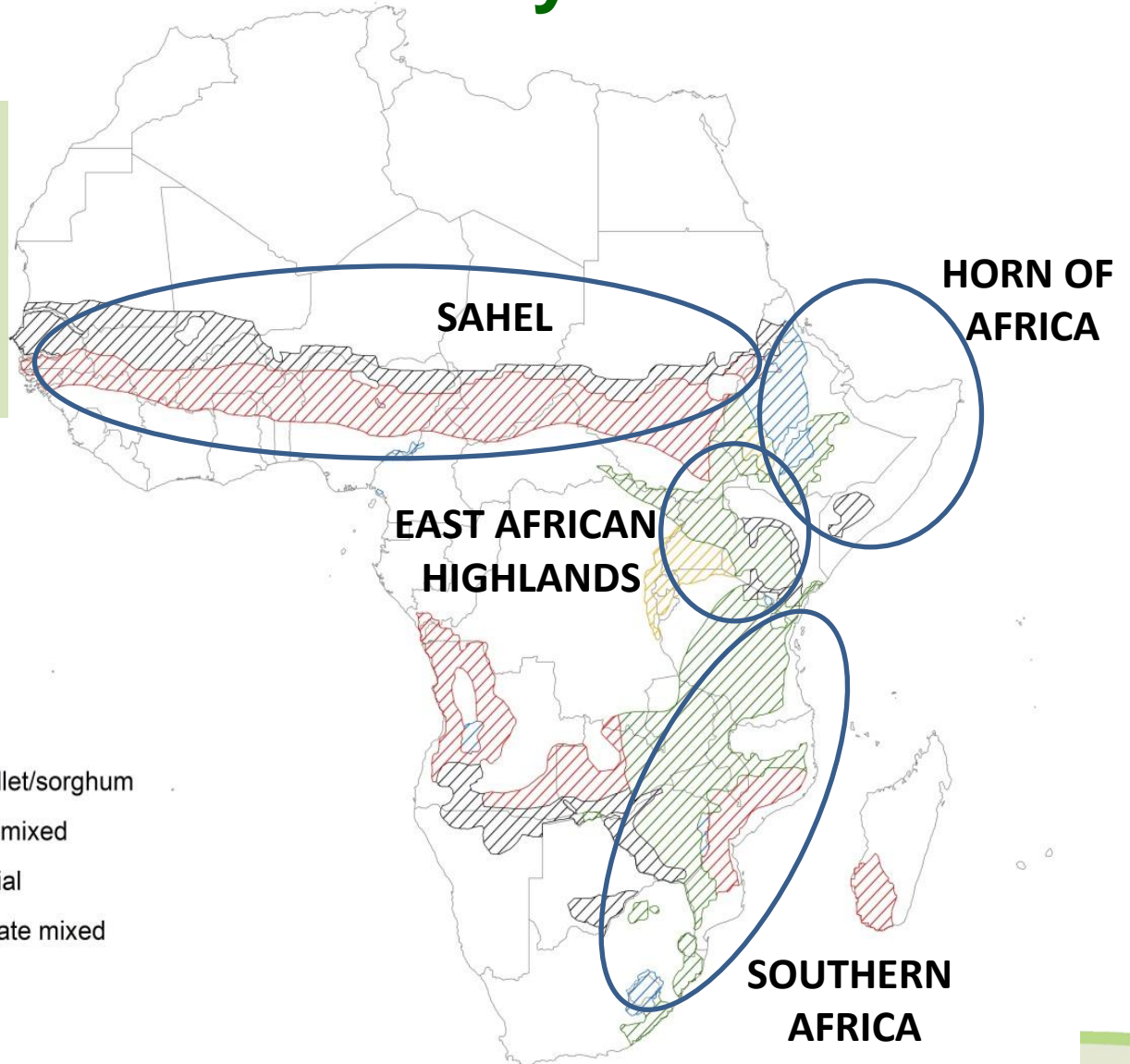
GLOBAL ENVIRONMENT FACILITY
INVESTING IN OUR PLANET

Geographical Targets for Food Security IAP

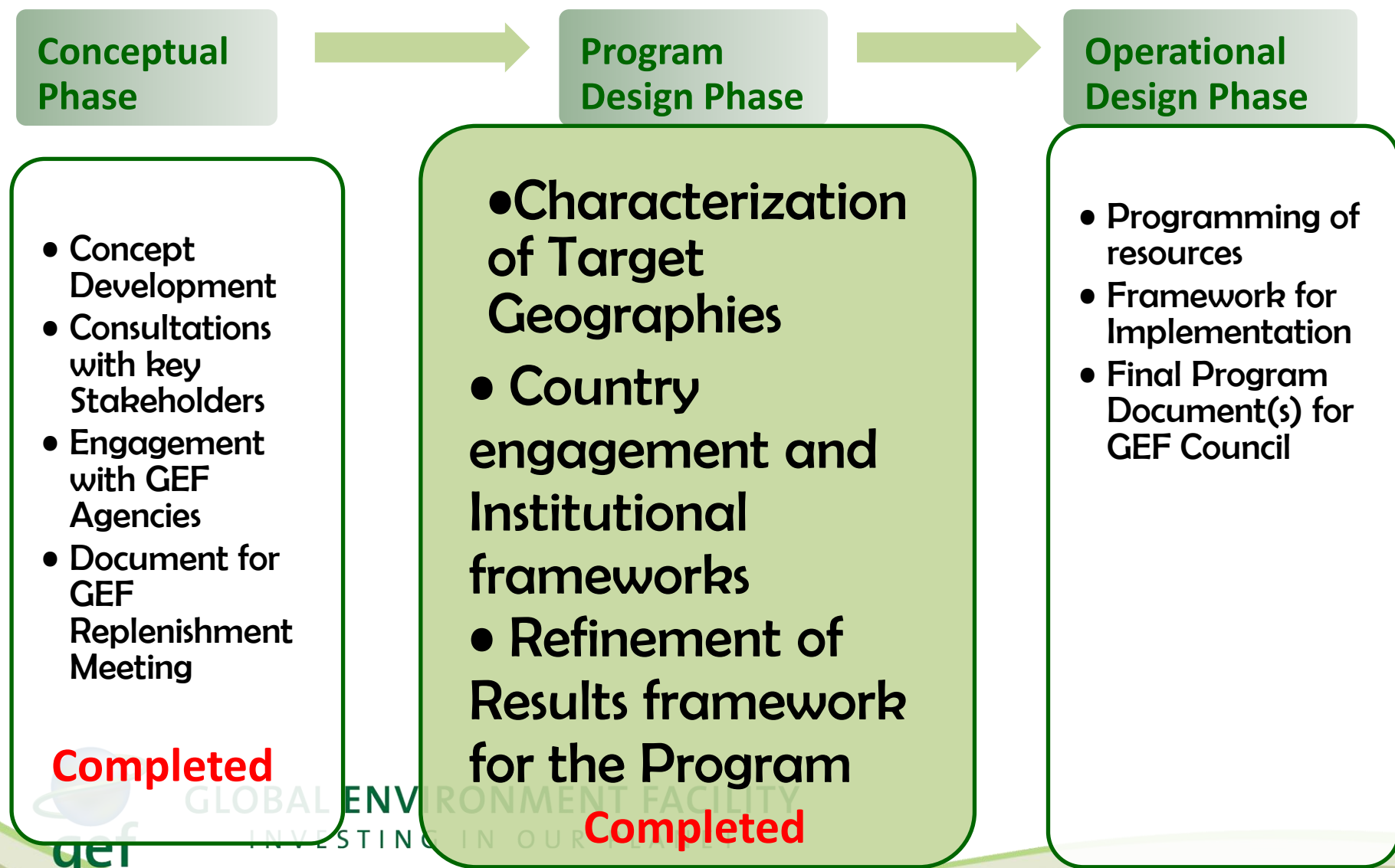
- Dryland regions
- Smallholder agriculture
- Target 10-12 countries initially

Farming System

-  Agro-pastoral millet/sorghum
-  Cereal-root crop mixed
-  Highland perennial
-  Highland temperate mixed
-  Maize mixed



Program Development Plan



IAP 3: Sustainable Cities

- ✓ Urgency to **integrate global environmental considerations and resilience** into city management through planning, design, and action
- ✓ Enhancing **partnership** towards impact
- ✓ **Supporting goals** of Multilateral Environmental Conventions
- ✓ Going beyond traditional, single GEF focal area project



GLOBAL ENVIRONMENT FACILITY
INVESTING IN OUR PLANET

Sustainable Cities IAP

Common Platform

An iterative, organic network program to bring together institutions and to encourage partnership

1. Sustainability plan

- Clear, rolling plan that provides an assessment of challenges and opportunities at cities/metro area
- Consistent with those spearheaded by partner institutions
- Inclusion of global environmental benefits

2. Tools

- Underpinning sustainability plan development and implementation
- Partners and participating cities to agree to use same set of tools and metrics



GLOBAL ENVIRONMENT FACILITY
INVESTING IN OUR PLANET

Possible Tools for Common Platform to Connect Urban Action to Global Impact

1. Common *metrics* and a consistent terminology, such as those included in ISO 37120 and the C40-ICLEI-WRI greenhouse gas (GHG) emissions inventory;
2. Quantifying energy and material flows through urban metabolism assessments – resource efficient cities;
3. Identification of a hierarchy of urban management that prioritizes service provision, increasing resilience and decreasing emissions and environmental impact;
4. Identification of local and global system boundaries, consistent with the tenets of sustainable development and key limits such as climate change and biodiversity.



GLOBAL ENVIRONMENT FACILITY
INVESTING IN OUR PLANET

Sustainable Cities IAP

Proposed Framework

Global Coordination

- * Application of ***common platform, with a set of tools and common metrics and sustainability plan*** for country/city sub-programs
- * Knowledge management, good practice, sharing of lessons learned

Country/city A:

Each sub-programs with:

- **Integrated policy/strategy**
- **Priority initiative demonstration**
- **Financial mechanism piloting (with partners)**
- **Partnerships and sharing of lessons**
- Others...

Country/city B

Country/city C

Country/city D



GLOBAL ENVIRONMENT FACILITY
INVESTING IN OUR PLANET

Sustainable Cities IAP Process

Program development

- Consultative meeting (August 2014)
- Announcement at UN SG's Climate Summit
- Common platform development
- Country component development and consultation
- Results framework development
- Resource allocation

Submission to GEF Council

- Update to GEF Council
- Technical clearance
- Work Program submission (Spring 2015)

Implementation

- Updates to GEF Council
- Sharing of lessons learned
- Review to derive findings and recommendations (2018)



GLOBAL ENVIRONMENT FACILITY
INVESTING IN OUR PLANET

Thematic areas in approaches to coastal fisheries





GLOBAL ENVIRONMENT FACILITY
INVESTING IN OUR PLANET



GLOBAL ENVIRONMENT FACILITY
INVESTING IN OUR PLANET