



# PROGRAM MANAGEMENT

**March 19<sup>th</sup>, 2018 - March 23<sup>rd</sup>, 2018**

A weekly update on the GEF Program Management

## Calendar

- Council Meeting Schedules
- GEFOP Meeting Schedules

## Projects

- GEF Project Concepts, Proposals, Draft Documents Received
- Project Clearances, Approvals, Endorsements and Other Comments

## Contacts

- GEF Secretariat Staff
- GEF Agencies
- GEF Trustee Convention Secretariats

## Communications

- Introducing new staff to the GEFSEC
- Announcements

## SCHEDULE OF FORTHCOMING GEF COUNCIL MEETING

Meetings/Consultations	Dates
GEF Council Consultations with Civil Society	
GEF Council Meeting	
LDCF/SCCF Council Meeting	
STAP Panel Meetings	

### GEF Work Program Calendar for 2018

Events	Dates
Receipt deadline for PIF/PFD	March 9
Draft Cover Note to Agencies, ConvSec, STAP	May 18
Inter-Agency Meeting with ConvSec, STAP	May 24
Posting of Work Program	May 29
Council Meeting	June 24-26
Council Approval	June 26

**Kindly see the link to the compilation of council comments for the November 2017 GEF Work Program**

**<https://www.thegef.org/sites/default/files/work-program-documents/Compilation%20of%20Council%20Comments%20-%20November%202017%20Work%20Program.pdf>**

**Fiscal Year '18**  
**Country Support Program Activities**  
**Expanded Constituency Workshops**

**Constituency Meetings**

**June 11 - 13, 2018**

**Switzerland**

***Venue: TBD***

**June 23, 2018**

**Asia Pacific**

***Venue: Furama Hotel, Da Nang***

**South Asia**

***Venue: Furama Hotel, Da Nang***

**East Asia**

***Venue: Furama Hotel, Da Nang***

## Requests Received from GEF Agencies

March 19 - 23, 2018

GEF ID	IA ID	Type	Focal Area	Decision Sought	Proponent	Country	Project Title	Program Manager	Date Received
<u>CI</u>									
9434		FP	Multi Focal Area	CEO endorsement of FSP	CI	Timor Leste	Securing the Long-term Conservation of Timor Leste Biodiversity and Ecosystem Services through the Establishment of a functioning National Protected Area Network and the Improvement of Natural Resource Management in Priority Catchment Corridor	Cyrille Barnerias	15-Mar-18
9983		FP	Climate Change	CEO PIF Clearance for WPI	CI	Regional (Botswana, Eritrea, Comoros, Mauritius, Seychelles, Sudan, Swaziland, Zambia)	Establishment of a Regional Capacity-Building Hub to Strengthen the Capacity of Member states in East and Southern Africa to Implement the Paris Agreement's Enhanced Transparency Framework	Dustin Schinn	19-Mar-18

<b>GEF ID</b>	<b>IA ID</b>	<b>Type</b>	<b>Focal Area</b>	<b>Decision Sought</b>	<b>Proponent</b>	<b>Country</b>	<b>Project Title</b>	<b>Program Manager</b>	<b>Date Received</b>
<b><u>FAO</u></b>									
9243		FP	Multi Focal Area	CEO endorsement of FSP	FAO	India	Green-Ag: Transforming Indian Agriculture for Global Environmental Benefits and the Conservation of Critical Biodiversity and Forest Landscapes	Hannah Fairbank	16-Mar-18
9514		FP	Multi Focal Area	CEO endorsement of FSP	FAO	Central African Republic	FLR in Supporting Landscape and Livelihoods Resilience in Central African Republic	Pascal Martinez	19-Mar-18
9516		FP	Multi Focal Area	CEO endorsement of FSP	FAO	Pakistan	Reversing Deforestation and Degradation in High Conservation Value Chilgoza Pine Forests in Pakistan	Pascal Martinez	19-Mar-18
10046		MSP	Land Degradation	CEO PIF Approval	FAO	Vanuatu	Ecosystem Restoration and Sustainable Land Management in Tongoa Island	Asha Bobb-Semple	21-Mar-18
<b><u>IUCN</u></b>									
9521		FP	Multi Focal Area	CEO endorsement of FSP	IUCN	Guinea-Bissau	Managing Mangroves and Production Landscapes for Climate Change Mitigation	Jean-Marc Sinnassamy	23-Mar-18
8033		FP	Climate Change	CEO endorsement of FSP	IUCN	Mauritania	Continental Wetlands Adaptation and Resilience to Climate Change	Katya Kuang-Idba	23-Mar-18

GEF ID	IA ID	Type	Focal Area	Decision Sought	Proponent	Country	Project Title	Program Manager	Date Received
<b>UNDP</b>									
9708	5877	FP	Chemicals and Waste	CEO endorsement of FSP	UNDP	Kenya	Global Opportunities for Long-term Development (GOLD) in the Artisanal Small-scale Gold Mining (ASGM) Sector: Integrated Sound Management of Mercury in Kenya's ASGM (IMKA)	Anil Sookdeo	15-Mar-18
9463	5379	FP	Biodiversity	CEO endorsement of FSP	UNDP	China	Strengthening Marine Protected Areas in SE China to conserve globally significant coastal biodiversity	Leah Karrer	15-Mar-18
9836	6005	MSP	Land Degradation	CEO PIF Approval	UNDP	Mauritius	Mainstreaming Sustainable Land Management and Biodiversity Conservation in the Republic of Mauritius	Jean-Marc Sinnassamy	19-Mar-18
9465	5689	FP	Biodiversity	CEO endorsement of FSP	UNDP	China	Enhancing Endangered Species Conservation through Reducing threats and PA System Strengthening in Gansu	Hannah Fairbank	19-Mar-18
9951	6010	FP	Climate Change	CEO PIF Clearance for WPI	UNDP	Mozambique	Scaling up Local Adaptation and Climate-risk Informed Planning for Resilient Livelihoods	Dustin Schinn	20-Mar-18
9367	5563	FP	Climate Change	CEO endorsement of FSP	UNDP	Bhutan	Bhutan Sustainable Low-emission Urban Transport Systems	Xiaomei Tan	20-Mar-18
10045	5267	EA	Climate Change	CEO EA Approval	UNDP	Algeria	Third National Communication and First Biennial Update Report of Algeria to the UNFCCC	Ming Yang	22-Mar-18

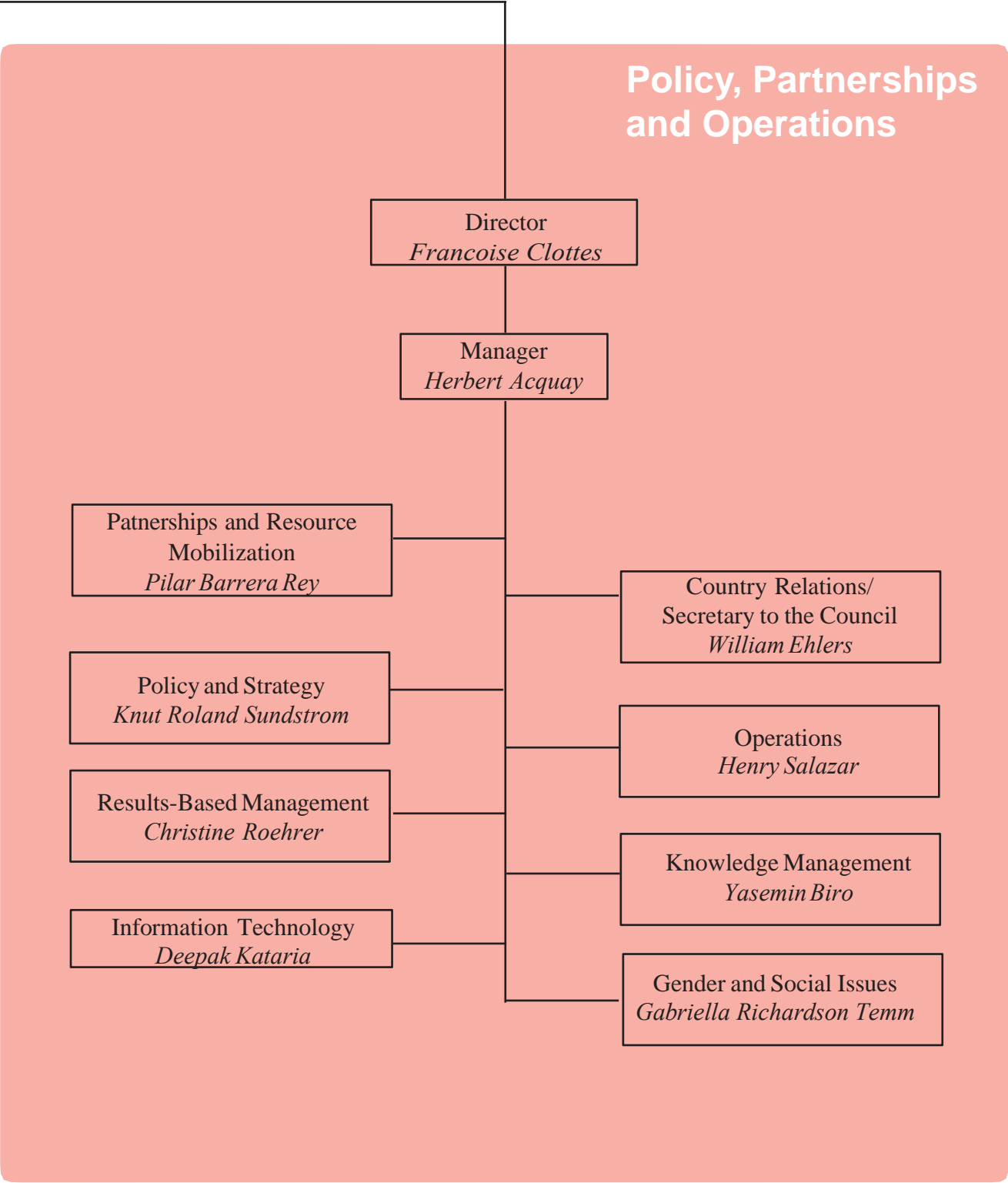
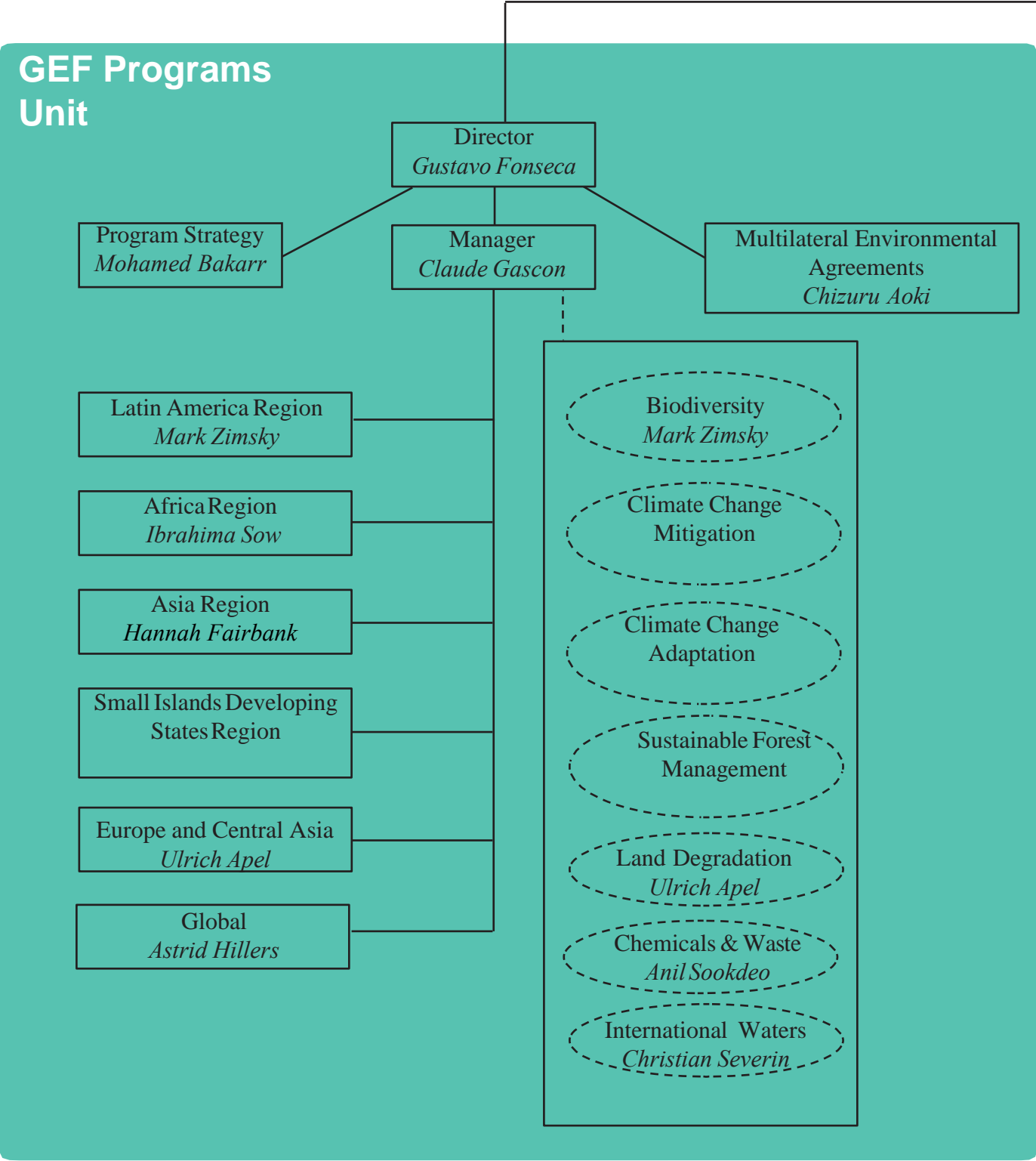
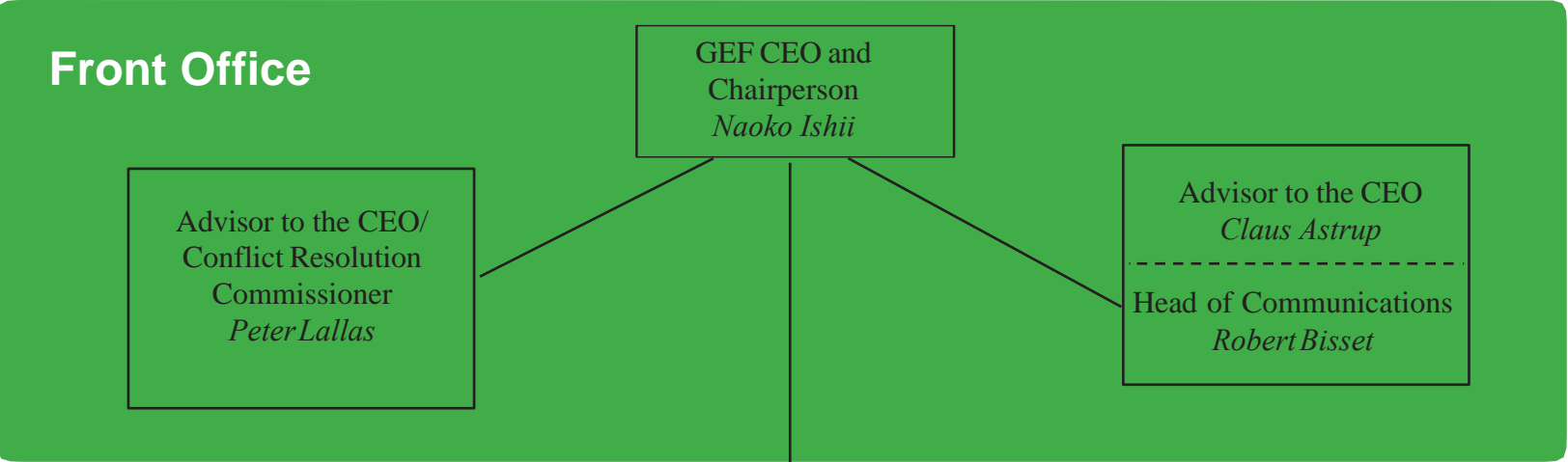
GEF ID	IA ID	Type	Focal Area	Decision Sought	Proponent	Country	Project Title	Program Manager	Date Received
<u>UNEP</u>									
9747		MSP	Multi Focal Area	CEO MSP Approval	UNEP	Mauritania	Building Core Capacity for the Implementation, Monitoring and Reporting of Multilateral Environmental Agreements (MEAs) in the Context of the Sustainable Development Goals (SDGs) in Mauritania	Susan Waithaka	19-Mar-18
9901		FP	Climate Change	CEO PIF Clearance for WPI	UNEP	Thailand	Accelerating Construction of Energy Efficient Green Housing Units in Thailand	Ming Yang	22-Mar-18
<u>UNIDO</u>									
9971		MSP	Climate Change	CEO PIF Approval	UNIDO	Mongolia	Industrial energy efficiency for Mongolia	Ming Yang	22-Mar-18

# Responses to Proponents

March 19 - 23, 2018

ID	IA ID	Type	Focal Area	Decision Sought	Proponen	Country	Project Title	Program Manage	Response Date	Remarks
<u>IUCN</u>										
9232		FP	Multi Focal Area	CEO endorsement of FSP	IUCN	Regional (Cambodia, Lao PDR, Myanmar)	Sustainable Management of Peatland Ecosystems in Mekong Countries	Paul Hartman	14-Mar-18	FSP endorsed by CEO
<u>UNEP</u>										
9452		FP	Climate Change	CEO endorsement of FSP	UNEP	Global (Afghanistan, Antigua And Barbuda, Central African Republic, Djibouti, Dominica, Eritrea, Fiji, Guinea, Haiti, Jamaica, Liberia, Myanmar, Malawi, Niger, Nauru, Suriname, Sao Tome and Principe, Chad, Trinidad and Tobago, Ukraine, Uganda)	Technology Needs Assessments - Phase III (TNA Phase III)	Katya Kuang-Idba	14-Mar-18	FSP endorsed by CEO
9956		MSP	Biodiversity	CEO PIF Approval	UNEP	Regional (Burkina Faso, Niger)	Effective National Implementation of the Access and Benefit Sharing and Traditional Knowledge Regime in Burkina Faso and Niger in accordance with the Nagoya Protocol through regional collaboration.	Jaime Cavelier	19-Mar-18	Review Sheet sent to Agency for PIF revision





**Naoko Ishii**  
Chief Executive Officer and Chairperson  
[nishii@thegef.org](mailto:nishii@thegef.org)

## FRONT OFFICE

**Peter Lallas**

Advisor to the Chief Executive Officer  
[plallas@thegef.org](mailto:plallas@thegef.org)  
+1 202 473 9732

**Amornrat Ning Poopech**

Resource Management Officer  
[apoopech@thegef.org](mailto:apoopech@thegef.org)  
+1 202 458 4366

**Esther Pormes**

Senior Executive Assistant  
[epormes@thegef.org](mailto:epormes@thegef.org)  
+1 202 473 8736

**Claus Pram Astrup**

Advisor to the Chief Executive Officer  
[castrup@worldbank.org](mailto:castrup@worldbank.org)  
+ 1 202 478 7270

**Julienne Kouame**

Program Analyst  
[jkouame@thegef.org](mailto:jkouame@thegef.org)  
+1 202 473 8736

**Diego Riano Posada**

Special Assistant  
[drianoposada@thegef.org](mailto:drianoposada@thegef.org)  
+1 202 473 1444

## Communications

**Robert Bisset**

Head of Communications  
[rbisset@thegef.org](mailto:rbisset@thegef.org)  
+1 202 458 5191

**Patrizia Cocca**

Communications Officer and KM Coordinator  
[pcocca@thegef.org](mailto:pcocca@thegef.org)  
+1 202 458 0234

**Alua Satybaldina-Kennedy**

Communications Consultant  
[asatybaldina@worldbank.org](mailto:asatybaldina@worldbank.org)

**Christian Hofer**

Senior Communications Officer  
[chofer@thegef.org](mailto:chofer@thegef.org)  
+1 202 458 0936

**Camila Perez Gabilondo**

Communications Associate  
[cperez@thegef.org](mailto:cperez@thegef.org)  
+1 202 458 0895

**Olivier Besson**

Program Assistant  
[obesson@thegef.org](mailto:obesson@thegef.org)  
+1 202 473-8935

---

Mailing Address:

**GEF Secretariat**

1818 H Street, NW, MSN N8-800  
Washington, D.C. 20433  
+1 202 473 0508; Fax: +1 202 522 3240/3245

## POLICY AND OPERATIONS

### Francoise Clottes

Director

[fclottes@thegef.org](mailto:fclottes@thegef.org)

+1 202 473 8471

#### Akila Nazneen

Senior Financial Assistant

[anazneen@thegef.org](mailto:anazneen@thegef.org)

+1 202 473 1760

#### Amanda Adams

Program Assistant

[aadams@thegef.org](mailto:aadams@thegef.org)

+1 202 473 9878

#### Christina Bogyo

Senior Program Assistant

[cbogyo@thegef.org](mailto:cbogyo@thegef.org)

+1 202 473 6974

#### Christine Roehrer

Coordinator –Lead Results Based Management

[croehrer@worldbank.org](mailto:croehrer@worldbank.org)

+1 202 473-0337

#### Deepak Kataria

Coordinator - Information Technology

[dkataria@thegef.org](mailto:dkataria@thegef.org)

+1 202 473 3881

#### Gabriella Richardson-Temm

Coordinator – Gender and Social Issues

[grichardsontemm@thegef.org](mailto:grichardsontemm@thegef.org)

#### Henry Salazar

Coordinator - Operations

[hsalazar@thegef.org](mailto:hsalazar@thegef.org)

+1 202 473 8226

#### Herbert Acquay

Manager - Policy, Partnerships and Operations

[hacquay@worldbank.org](mailto:hacquay@worldbank.org)

+1 202 473 1043

#### Juman Byun

Business Solutions Officer

[jbyun@thegef.org](mailto:jbyun@thegef.org)

+1 202 458 7987

#### Knut Roland Sundstrom

Coordinator - Policy and Strategy

[ksundstrom@thegef.org](mailto:ksundstrom@thegef.org)

+1 202 473 7510

#### Lesly Rigaud

Client Technologies Officer

[lrigaud@thegef.org](mailto:lrigaud@thegef.org)

+1 202 473 3881

#### Minna Maria Kononen

Country Relations Officer

[nkononen@thegef.org](mailto:nkononen@thegef.org)

+1 202 473 9402

#### Naiying Peng

Operations Analyst

[npeng@thegef.org](mailto:npeng@thegef.org)

+1 202 458 9580

#### Nicolas Alejandro Marquez Pizzanelli

Operations Analyst

[nmarquez@thegef.org](mailto:nmarquez@thegef.org)

+1 202 473 9522

#### Olha Krushelnytska

Operations Officer

[okrushelnytska@thegef.org](mailto:okrushelnytska@thegef.org)

+1 202 458 5839

**Omid Parhizkar**  
Operations Officer  
[oparhizkar@thegef.org](mailto:oparhizkar@thegef.org)  
+1 202 458 2186

**Pilar Barrera**  
Coordinator - Partnerships and  
Resource Mobilization  
[pbarrera@thegef.org](mailto:pbarrera@thegef.org)  
+1 202 458 9891

**Raul Rodriguez**  
Temporary  
[rrodriguez@thegef.org](mailto:rrodriguez@thegef.org)

**Regine Mpoyi**  
Program Assistant  
[rmpoyi@thegef.org](mailto:rmpoyi@thegef.org)  
+1 202 473 2754

**Seo-Jeong Yoon**  
Policy Officer  
[syoon@thegef.org](mailto:syoon@thegef.org)  
+1 202 473 7832

**Susan Waithaka**  
Country Relations Officer  
[swaithaka1@thegef.org](mailto:swaithaka1@thegef.org)  
+1 202 473 5457

**William Ehlers**  
Coordinator – Country Relations/  
Secretary to the Council  
[wehlers@thegef.org](mailto:wehlers@thegef.org)  
+1 202 458 9436

**Oreste Maia Andrade**  
Operations Analyst  
[omaiaandradejr@thegef.org](mailto:omaiaandradejr@thegef.org)  
+1 202 458 9387

**Quynh Xuan Thi Phan**  
Senior Financial Specialist  
[qphan1@worldbank.org](mailto:qphan1@worldbank.org)  
+1 202 458 4760

**Ramon Prudencio C de Mesa**  
Operations Officer  
[rmesa@thegef.org](mailto:rmesa@thegef.org)  
+1 202 458 9285

**Robert Schreiber**  
Program Coordinator  
[rschreiber@thegef.org](mailto:rschreiber@thegef.org)  
+1 202 458 0288

**Sonja Sabita Teelucksingh**  
Senior Environmental Specialist  
[steelucksingh@thegef.org](mailto:steelucksingh@thegef.org)  
+1 202 458 4004

**Thomas Biegel**  
Consultant  
[tbiegel@thegef.org](mailto:tbiegel@thegef.org)  
+1 202 473 9252

**Yasemin Biro**  
Coordinator - Knowledge Management  
[ybiro@thegef.org](mailto:ybiro@thegef.org)  
+1 202 473 1550

---

## PROGRAMS

### **Gustavo Fonseca**

Director

[gfonsecal@thegef.org](mailto:gfonsecal@thegef.org)

+ 1 202 458 4818

#### **Akio Takemoto**

Senior Environmental Specialist

[atakemoto@thegef.org](mailto:atakemoto@thegef.org)

+1 202 458 2789

#### **Anil Bruce Sookdeo**

Chemicals and Waste Focal Area  
Coordinator

[asookdeo@thegef.org](mailto:asookdeo@thegef.org)

+1 202 458 0683

#### **Astrid Hillers**

Senior Environmental Specialist

[ahillers@thegef.org](mailto:ahillers@thegef.org)

+1 202 458 8173

#### **Christian Severin**

International Waters Focal Area Coordinator

[cseverin@thegef.org](mailto:cseverin@thegef.org)

+1 202 458 2001

#### **Cyrille Barnerias**

Senior Environment Specialist

[cbarnerias@thegef.org](mailto:cbarnerias@thegef.org)

+1 202 473 8871

#### **Evelyn Swain**

Senior Environment Specialist

[eswain@thegef.org](mailto:eswain@thegef.org)

+1 202 473 1151

#### **Flavius Mihaies**

Consultant, Climate and Chemicals

[fmihaies@thegef.org](mailto:fmihaies@thegef.org)

+1 202 560 4934

#### **Hannah Fairbank**

Senior Biodiversity Specialist

[hfairbank@thegef.org](mailto:hfairbank@thegef.org)

#### **Asha Imani Bobb Semple**

Operations Analyst

[abobbsemples@thegef.org](mailto:abobbsemples@thegef.org)

+1 202 473 989

#### **Chizuru Aoki**

Lead Environmental Specialist -  
Multilateral Environmental  
Agreements [caoki@thegef.org](mailto:caoki@thegef.org)

+1 202 473 6068

#### **Claude Gascon**

Lead Program Manager

[cgascon@thegef.org](mailto:cgascon@thegef.org)

+1 202 458 9755

#### **Dustin Schinn**

Climate Change Specialist

[dschinn@thegef.org](mailto:dschinn@thegef.org)

+1 202 458 1234

#### **Fareeha Iqbal**

Senior Climate Change Specialist

[fiqbal1@thegef.org](mailto:fiqbal1@thegef.org)

+1 202 458 9593

#### **Glynis Barber**

Program Assistant

[gbarber@thegef.org](mailto:gbarber@thegef.org)

+1 202 473 9647

#### **Ibrahima Sow**

Africa Regional Coordinator

[isow@thegef.org](mailto:isow@thegef.org)

+ 1 202 473 2716

**Jaime Cavelier**  
Senior Biodiversity Specialist  
[jcavelier@thegef.org](mailto:jcavelier@thegef.org)  
+1 202 473 4886

**Jean-Marc Sinnassamy**  
Senior Environmental Specialist  
[jsinnassamy@thegef.org](mailto:jsinnassamy@thegef.org)  
+1 202 473 8060

**Katya Yuh Kuang-Idba**  
Climate Change Specialist  
[kkuangidba@thegef.org](mailto:kkuangidba@thegef.org)  
+1 202 473 4364

**Kettly Denis**  
Program Assistant  
[kdenis@thegef.org](mailto:kdenis@thegef.org)  
+1 202 473 0825

**Leah Karrer**  
Senior Environmental Specialist  
[lkarrer@thegef.org](mailto:lkarrer@thegef.org)  
+1 202 473 8364

**Mark Zimsky**  
Latin America Regional Coordinator/  
Biodiversity Focal Area Coordinator  
[mzimsky@thegef.org](mailto:mzimsky@thegef.org)  
+1 202 473 7855

**Milena Gonzalez Vasquez**  
Junior Professional Associate  
[mgonzalezvasquez@thegef.org](mailto:mgonzalezvasquez@thegef.org)  
+1 202 458 1284

**Manuela Ravina da Silva**  
Junior Professional Officer  
[mravinadasilva@thegef.org](mailto:mravinadasilva@thegef.org)  
+1 202 473 3231

**Mohamed Imam Bakarr**  
Lead Environmental Specialist - Program  
Strategy [mbakarr@thegef.org](mailto:mbakarr@thegef.org)  
+1 202 458 8890

**Ming Yang**  
Senior Climate Change Specialist  
[myang@thegef.org](mailto:myang@thegef.org)  
+1 202 473 5707

**Nhu Quynh Phan**  
Program Assistant  
[nphan@thegef.org](mailto:nphan@thegef.org)  
+1 202 473 4236

**Monica Fernandes**  
Senior Program Assistant  
[mfernandes@thegef.org](mailto:mfernandes@thegef.org)  
+1 202 473 9647

**Pascal Martinez**  
Senior Climate Change Specialist  
[pmartinez2@thegef.org](mailto:pmartinez2@thegef.org)  
+1 202 458-9755

**Paul Hartman**  
Senior Environmental Specialist  
[phartman@thegef.org](mailto:phartman@thegef.org)

**Shakil Kayani**  
Program Assistant  
[skayani@thegef.org](mailto:skayani@thegef.org)  
+1 202 458 4680

**Sarah Wyatt**  
Operations Analyst  
[swyatt@thegef.org](mailto:swyatt@thegef.org)  
+1 202 473 0534

**Steffen Hansen**  
Environmental Specialist  
[shansen@thegef.org](mailto:shansen@thegef.org)  
+1 202 458 8796

**Tigest Tirfe**  
Program Assistant  
[ttirfe@thegef.org](mailto:ttirfe@thegef.org)  
+1 202 458 9297

**Ulrich Apel**  
Europe and Central Asia Regional Coordinator/  
Land Degradation Focal Area Coordinator  
[uapel@thegef.org](mailto:uapel@thegef.org)  
+1 202 473 2573

**Xiaomei Tan**  
Senior Climate Change Specialist  
[xtan1@thegef.org](mailto:xtan1@thegef.org)  
+1 202 473 7448

---

# INDEPENDENT EVALUATION OFFICE

## Juha Uitto

Director

GEF Independent Evaluation Office

[juitto@thegef.org](mailto:juitto@thegef.org)

### Anupam Anand

Evaluation Officer

[aanand2@thegef.org](mailto:aanand2@thegef.org)

+202-473-3147

### Geeta Batra

Deputy Director and  
Chief Evaluation Officer

[gbatra@thegef.org](mailto:gbatra@thegef.org)

+202-473-4442

### Carlo Carugi

Senior Evaluation Officer

[ccarugi@thegef.org](mailto:ccarugi@thegef.org)

+1 202 473 8154

### Anna Viggh

Senior Evaluation Officer

[aviggh@worlbank.org](mailto:aviggh@worlbank.org)

+1 202 4738896

### Kseniya Temnenko

Knowledge Management Officer

[ktemnenko@thegef.org](mailto:ktemnenko@thegef.org)

+1 202 458 4908

### Jeneen Garcia

Evaluation Officer

[jgarcia2@thegef.org](mailto:jgarcia2@thegef.org)

+1 202 458 2719

### Francisco Grahammer

Information Analyst

[fgrahammer@thegef.org](mailto:fgrahammer@thegef.org)

+1 202 473 4914

### Kyoko Matsumoto

Senior Evaluation Officer

[kmatsumoto@thegef.org](mailto:kmatsumoto@thegef.org)

+1 202 473 2609

### Marie-Constance Manuella Koukoui

Senior Executive Assistant

[mkoukoui@thegef.org](mailto:mkoukoui@thegef.org)

+1 202 458 9682

### Khondoker Tanveer Haider

Consultant

[khaider@thegef.org](mailto:khaider@thegef.org)

### Neeraj Kumar Negi

Senior Evaluation Officer

[nnegi1@thegef.org](mailto:nnegi1@thegef.org)

+1 202 473 2259

### Juan Portillo

Senior Operations Officer

[jportillo@worlbank.org](mailto:jportillo@worlbank.org)

+1 202 473 6056

### Baljit Wadhwa

Senior Evaluation Officer

[bwadhwa@worlbank.org](mailto:bwadhwa@worlbank.org)

+1 202 473 0266

### Dennis Bours

Evaluation Officer

[sdbours@thegef.org](mailto:sdbours@thegef.org)

+1 202 458 9153

### Malac Kabir

Research Assistant

[mkabir4@thegef.org](mailto:mkabir4@thegef.org)

+1 202 473 1808

### Molly Watts

Evaluation Analyst

[mwatts1@thegef.org](mailto:mwatts1@thegef.org)

+1 202 473 3675

### Sara El Choufi

Evaluation Analyst

[selchoufi@thegef.org](mailto:selchoufi@thegef.org)

+1 202 458 7069

### Peixuan Zhou

Evaluation Analyst

[pzhou2@thegef.org](mailto:pzhou2@thegef.org)

+1 202 473 1703

### Evelyn Chihuguyu

Program Assistant

[echihuguyu@thegef.org](mailto:echihuguyu@thegef.org)

+1 202 473 0654

### Laura Reynolds Nissley

Consultant

[lnissley@thegef.org](mailto:lnissley@thegef.org)



## ADAPTATION FUND BOARD SECRETARIAT

**Mikko Antti Ollikainen**  
Manager  
[mollikainen@adaptation-fund.org](mailto:mollikainen@adaptation-fund.org)  
+1 202 458 8912

**Daouda Ben Oumar Ndiaye**  
Senior Climate Change Specialist  
[dndiaye@adaptation-fund.org](mailto:dndiaye@adaptation-fund.org)  
+1 202 473 4611

**Silvia Mancini**  
Operations Officer  
[smancini@adaptation-fund.org](mailto:smancini@adaptation-fund.org)

**Uchij c'F qdctf | k**  
EW[ad5'[\_ SFW5ZS` YWbW[S]ef  
[uf qdctf | kB cf cr vlgp/hwpf Qti](mailto:uf qdctf | kB cf cr vlgp/hwpf Qti)  
- "424"695"7; 65

**Aya Mimura**  
Operations Associate  
[amimura@adaptation-fund.org](mailto:amimura@adaptation-fund.org)  
+1 202 458 7347

**Young Hee Lee**  
Operations Analyst  
[ylee12@adaptation-fund.org](mailto:ylee12@adaptation-fund.org)  
+1 202 473 8219

**Sophie Hans-Moevi**  
Senior Program Assistant  
[shansmoevi@adaptation-fund.org](mailto:shansmoevi@adaptation-fund.org)  
+1 202 473 0701

**Farayi Onias Madziwa**  
Program Officer  
[fmadziwa@adaptation-fund.org](mailto:fmadziwa@adaptation-fund.org)  
+1 202 458 5184

**Matthew Pueschel**  
Consultant  
[mpueschel@adaptation-fund.org](mailto:mpueschel@adaptation-fund.org)  
+1 202 473 6743

**Hugo Remaury**  
Junior Professional Associate  
[hremaury@adaptation-fund.org](mailto:hremaury@adaptation-fund.org)  
+1 202 473 5463

**Anni Rein**  
Temporary  
[arein@adaptation-fund.org](mailto:arein@adaptation-fund.org)  
+1 202 458 9758

**Alicia Marie Austin** Temporary  
[aaustin@adaptation-fund.org](mailto:aaustin@adaptation-fund.org)  
+1 202 458 9758

---

## GEF DIRECTORY OF ADDRESSEES

### GEF Secretariat

**GEF Secretariat<sup>1</sup>**  
**Program Coordination Registry**  
1818 H Street, NW  
Washington, D.C. 20433, USA  
[gcoordination@thegef.org](mailto:gcoordination@thegef.org)

Attn: Mr. Henry Salazar  
Coordinator - Operations  
[hsalazar@thegef.org](mailto:hsalazar@thegef.org)  
+1 202 473 8226

### GEF Trustee

**International Bank for Reconstruction and Development (The World Bank) Registry**  
1818 H Street, NW  
Washington, D.C. 20433, USA  
[geftrustee@worldbank.org](mailto:geftrustee@worldbank.org)

Mr. Praveen Desabatla  
Team Leader, DFPTF  
[pdesabatla@worldbank.org](mailto:pdesabatla@worldbank.org)  
+1 202 458 2099

### Convention Secretariats

**UN Convention on Biological Diversity (CBD)**  
413 rue Saint-Jacques, Suite 800  
Montreal, Quebec, Canada H2Y 1 N9  
[Secretariat@cbd.int](mailto:Secretariat@cbd.int)

Attn: Ms. Cristiana Paşca Palmer  
Executive Secretary  
*GEF Contact Person: Ailis Rego*  
[ailis.rego@cbd.int](mailto:ailis.rego@cbd.int)

**UN Framework on Climate Change Convention (UNFCCC)**  
Haus Carstanjen  
Martin Luther King Strasse 8  
53175 Bonn, Germany  
[secretariat@unfccc.int](mailto:secretariat@unfccc.int)

Attn: Ms. Patricia Espinosa  
Executive Secretary  
*GEF Contact Person(s):*  
- *Ms. Deschen Tsering*  
[DTsering@unfccc.int](mailto:DTsering@unfccc.int)  
  
- *Mr. Alejandro Kilpatrick*  
[AKilpatrick@unfccc.int](mailto:AKilpatrick@unfccc.int)  
  
[gefenabling.activities@unfccc.int](mailto:gefenabling.activities@unfccc.int)  
[gefprojects@unfccc.int](mailto:gefprojects@unfccc.int)

**Secretariat of the Basel, Rotterdam and Stockholm Conventions**  
UNEP International Environment House 1  
11-13 Chemin des Anemones  
1219 Chatelaine, Geneva, Switzerland

Attn: Dr. Rolph Payet  
Executive Secretary  
*Mr. Frank Moser*  
*GEF Focal Point*  
*Office of the Executive Secretary*  
[frank.moser@brsmeas.org](mailto:frank.moser@brsmeas.org)  
+41 22 917 8951

---

<sup>1</sup> GEF Secretariat's physical address: 1899 Pennsylvania Avenue, NW, Washington, D.C. 20006

---

**UN Convention to Combat Desertification  
(UNCCD)**

Herrmann-Ehlers Str. 10  
D-53113 Bonn, Germany  
[secretariat@unccd.int](mailto:secretariat@unccd.int)

Attn: Ms. Monique Barbut  
Executive Secretary

*GEF Contact Person: Ms. Anja Thust  
Program Officer, FCMI Unit*

[athust@unccd.int](mailto:athust@unccd.int)  
+49 228 815 2828

---

**Interim Secretariat of the Minamata Convention**

International Environment House 1  
13, chemin des Anémones  
CH-1219 Chatelaine, Geneva  
Switzerland

Ms. Rossana Silva Repetto  
Executive Secretary  
[Rossana.Silva-Repetto@unep.org](mailto:Rossana.Silva-Repetto@unep.org)

---

## STAP Panel and Secretariat

### Panel

**Rosina Bierbaum**

Chairperson

[rbierbau@umich.edu](mailto:rbierbau@umich.edu)

+1 734 763 8675

**Ralph E. Sims**

Panel Member on Climate Change Mitigation

[R.E.Sims@massey.ac.nz](mailto:R.E.Sims@massey.ac.nz)

+64 21 166 4555

**Brian Child**

Panel Member on Biodiversity

[bchild@ufl.edu](mailto:bchild@ufl.edu)

+352 392 0494

**Ricardo Barra**

Panel Member on Chemicals & Waste

[ricbarra@udec.cl](mailto:ricbarra@udec.cl)

56-41-2204002

**Annette Cowie**

Panel Member on Land Degradation

[annette.cowie@une.edu.au](mailto:annette.cowie@une.edu.au)

+61 2 677 28080

**Ferenc Toth**

Panel Member of Adaptation

[ferenc3toth@gmail.com](mailto:ferenc3toth@gmail.com)

+43 2236 864501

**Michael Stocking**

Advisor to the STAP Chair

[m.stocking@uea.ac.uk](mailto:m.stocking@uea.ac.uk)

+44 1603 592 339

**Thomas E. Lovejoy**

Advisor to the STAP Chair

[tlovejoy@unfoundation.org](mailto:tlovejoy@unfoundation.org)

### Secretariat

**Christopher Whaley**

STAP Secretary

[christopher.whaley@unenvironment.org](mailto:christopher.whaley@unenvironment.org)

+1 202 974 1318

**Guadalupe Duron**

Programme Officer

[guadalupe.duron@unenvironment.org](mailto:guadalupe.duron@unenvironment.org)

+1 202 974 1313

**Robin Burgess**

Programme Assistant

[robin.burgess@unenvironment.org](mailto:robin.burgess@unenvironment.org)

+1 202 974 1311

**Sarah Lebel**

Climate Adaptation and Resilience Specialist

[sarah.lebel@unenvironment.org](mailto:sarah.lebel@unenvironment.org)

+1 202 621 5036

**Virginia Gorsevski**

Senior Programme Officer

[virginia.gorsevski@unenvironment.org](mailto:virginia.gorsevski@unenvironment.org)

+1 202 621 5020

**Sunday A. Leonard (PhD)**

Senior Programme Officer

[sunday.leonard@unenvironment.org](mailto:sunday.leonard@unenvironment.org)

+ 33 (0) 1 44 37 19 98

## GEF Agency Secretariats

**African Development Bank (AfDB) Registry**  
Headquarters  
01 BP 1387 Abidjan 01  
Côte d'Ivoire  
[Gef\\_afdb@afdb.org](mailto:Gef_afdb@afdb.org)

Mr. Mahamat Assouyouti  
GEF Coordinator  
[m.assouyouti@afdb.org](mailto:m.assouyouti@afdb.org)

*Copy to:*  
*Mr. Kurt Lonsway*  
*Division Manager, Environment and Climate Change*  
[k.lonsway@afdb.org](mailto:k.lonsway@afdb.org)

**Asian Development Bank (ADB) Registry**  
6 ADB Avenue  
Mandaluyong City 1550  
Metro Manila, Philippines  
[adbgef@adb.org](mailto:adbgef@adb.org)

Attn: Mr. Nessim Ahmad  
Deputy Director General, Sustainable Development and Climate Change Development and GEF Official Focal Point  
[njahmad@adb.org](mailto:njahmad@adb.org)

*Copy to:*  
*Mr. Bruce Dunn*  
*Principal Environment Specialist, Environment and Safeguards and ADB/GEF Coordinator*  
[bdunn@adb.org](mailto:bdunn@adb.org)  
+632 683 1922/ +632 683 1923

**European Bank for Reconstruction and Development (EBRD) Registry**  
One Exchange Square  
London EC2A 2JN, United Kingdom  
[ebrdgef@ebrd.com](mailto:ebrdgef@ebrd.com)

Attn: Mr. Alexis Franke  
Principal Manager | Deputy Pillar Head  
Donor Co-Financing  
[frankea@ebrd.com](mailto:frankea@ebrd.com)  
+44 20 7338-6004

**United Nations Food and Agriculture Organization (FAO) Registry**  
Viale Dell Terme di Caracalla  
00153 Rome, Italy  
[GEF-Coordination-Unit@fao.org](mailto:GEF-Coordination-Unit@fao.org)

Attn: Mr Alexander Jones  
Director, Climate and Environment Division (CBC)  
[CBC-Director@fao.org](mailto:CBC-Director@fao.org)  
+3906 570 54477

*Copy to:*  
*Mr. Jeffrey Griffin*  
*Senior Coordinator - FAO-GEF Unit*  
*Climate and Environment*  
*Division (CBC)*  
[Jeffrey.Griffin@fao.org](mailto:Jeffrey.Griffin@fao.org)  
[faogef@fao.org](mailto:faogef@fao.org)  
+3906 570 55680

## GEF Agency Secretariats cont'd

### **Inter-American Development Bank (IDB) Registry**

1300 New York Avenue, NW  
Washington, D.C. 20577, USA  
[idb-gef@iadb.org](mailto:idb-gef@iadb.org)

Mr. Juan Pablo Bonilla  
IDB-GEF Executive Coordinator  
[Idb-gef@iadb.org](mailto:Idb-gef@iadb.org)

### **International Bank for Reconstruction and Development (The World Bank) Registry**

1818 H Street, NW Washington,  
D.C. 20433, USA  
[wbgefoperations@worldbank.org](mailto:wbgefoperations@worldbank.org)

Ms. Emilia Battaglini GEF  
Executive Coordinator  
[ebattaglini@worldbank.org](mailto:ebattaglini@worldbank.org)  
+ 1 202 458 0378

*Copy to:*  
*Shaanti Kapila*  
[skapila@worldbank.org](mailto:skapila@worldbank.org)

### **International Fund for Agricultural Development (IFAD) Registry**

Via Paolo di Dono, 44  
00142 Rome, Italy  
[ECDmailbox@ifad.org](mailto:ECDmailbox@ifad.org)

Mr. Perin Saint-Ange  
Associate Vice President,  
Programme Management Department  
[p.saintange@ifad.org](mailto:p.saintange@ifad.org)  
+39 06 5459 2448

*Copy to:*  
*Ms. Margarita Astrálaga*  
*Director, Environment and Climate Division*  
[m.astralaga@ifad.org](mailto:m.astralaga@ifad.org)  
*Tel: +39 06 5459 2151*

*Ms. Sheila Mwanundu*  
[s.mwanundu@ifad.org](mailto:s.mwanundu@ifad.org)

*Ms. Aisha Nazario*  
[a.nazario@ifad.org](mailto:a.nazario@ifad.org)  
*Tel: +39 06 5459 2459*  
*Ms. Estibalitz Morras*  
[e.morras@ifad.org](mailto:e.morras@ifad.org)  
*Tel: +39 06 5459 2438*

### **United Nations Environment Programme (UN Environment) Registry**

United Nations Avenue  
Gigiri, PO Box 30552  
00100 Nairobi, Kenya  
[Unepgef@unep.org](mailto:Unepgef@unep.org)

Ms. Kelly West  
GEF Coordinator  
[Kelly.West@unep.org](mailto:Kelly.West@unep.org)  
+254 20 762 4147

Local Office:

900 17th Street, NW  
Suite 506, Washington, D.C. 20006

## GEF Agency Secretariats cont'd

### **United Nations Industrial Development Organization (UNIDO) Registry**

Vienna International Centre  
PO Box 300  
A-1400 Vienna, Austria  
[gef@unido.org](mailto:gef@unido.org)

Mr. Juergen Hierold  
GEF Coordinator  
[J.Hierold@unido.org](mailto:J.Hierold@unido.org)  
+43 1 26026 4565

*Copy to:*  
*Ms. Pamela Mikschofsky*  
[p.mikschofsky@unido.org](mailto:p.mikschofsky@unido.org)

### **United Nations Development Programme (UNDP) Registry**

304 East 45th Street  
New York, NY 10017, USA  
[undpgef@undp.org](mailto:undpgef@undp.org)

Attn: Ms. Adriana Dinu  
GEF Executive Coordinator  
[Adriana.dinu@undp.org](mailto:Adriana.dinu@undp.org)  
+1 212 906 5143

*Copy to:*  
*Nancy Bennet*  
[nancy.bennet@undp.org](mailto:nancy.bennet@undp.org)

## GEF Project Agency Secretariats

**Corporación Andina de Fomento (CAF)**  
380 Enrique Canaval Moreyra Ave., 13th Floor,  
San Isidro, Lima  
Lima 27, Peru  
[CAFGEF@caf.com](mailto:CAFGEF@caf.com)

Attn: René Gómez García Palao  
Senior Executive  
[rgomezgarcia@caf.com](mailto:rgomezgarcia@caf.com)  
+511-710-8530

*Copy to:*  
*Ms. Ligia Castro de Doens,*  
*Director*  
*Environment*  
[lcastro@caf.org](mailto:lcastro@caf.org)

### **Conservation International (CI)**

2011 Crystal Drive, Suite 500  
Arlington VA, 22202  
USA  
[CIGEF@conservation.org](mailto:CIGEF@conservation.org)

Attn: Mr. Miguel Morales  
Vice President/ Managing Director  
CI-GEF Project Agency  
[mamorales@conservation.org](mailto:mamorales@conservation.org)

*Copy to:*  
[osamaroo@conservation.org](mailto:osamaroo@conservation.org)

## GEF Project Agency Secretariats cont'd

**Development Bank of Southern Africa  
(DBSA)**

1258 Lever Road, Headway Hill  
Midrand, 1685  
South Africa  
[DBSAGEF@dbsa.org](mailto:DBSAGEF@dbsa.org)

Attn: Ms. Nomsa T. Zondi  
GEF Coordinator  
[nomsaz@dbsa.org](mailto:nomsaz@dbsa.org)  
+27 11 313 3491

**Foreign Economic Cooperation Office  
(FECO)**

Ministry of Environmental Protection  
ECO Building  
No.5 Houyingfang Hutong  
Xicheng District, Beijing 100035, China  
[FECOGEF@mepfeco.org.cn](mailto:FECOGEF@mepfeco.org.cn)

Attn: Mr. Xiao Xuezhi  
Deputy Director General  
[xiao.xuezhi@mepfeco.org.cn](mailto:xiao.xuezhi@mepfeco.org.cn)  
+ 86-10-82268807

*Copy to:*  
*Ms. Chen Haijun*  
*Director,*  
[chen.haijun@mepfeco.org.cn](mailto:chen.haijun@mepfeco.org.cn)  
+ 86-10-82268846

Ms. Yan Wei  
Senior Project Manager  
[yan.wei@mepfeco.org.cn](mailto:yan.wei@mepfeco.org.cn)  
+ 86-10-82268848

**International Union for Conservation of  
Nature (IUCN)**

Rue Mauverney, 28  
CH-1196 Gland,  
Switzerland  
[IUCNCEF@iucn.org](mailto:IUCNCEF@iucn.org)

Attn: Cyrie Sendashonga  
Global Director, Policy and Programme  
[Cyriaque.Sendashonga@iucn.org](mailto:Cyriaque.Sendashonga@iucn.org)  
+41 22 999 03 17

*Copy to:*  
*Mr. Jean-Yves Pirot,*  
*Head, GEF Coordination Unit*  
[jean-yves.pirot@iucn.org](mailto:jean-yves.pirot@iucn.org)  
+41 22 999 02 56

*Mr. Sébastien Delahaye*  
*Portfolio Manager*  
*GEF Coordination Unit*  
[Sebastien.Delahaye@iucn.org](mailto:Sebastien.Delahaye@iucn.org)  
+41 22 999 02 51



## GEF Project Agency Secretariats cont'd

---

**World Wildlife Fund, Inc. (WWF-US)**

1250 24th St, NW  
Washington, DC 20037-1193  
[WWFGEF@wwfus.org](mailto:WWFGEF@wwfus.org)

Attn: Dr. David S. McCauley  
Senior Vice President  
Policy and Government Affairs  
[david.mccauley@wwfus.org](mailto:david.mccauley@wwfus.org)  
+1-202-495-4159

*Copy to:*  
*Mr. Hervé Lefevre*  
*Senior Director, GEF Relations and*  
*GEF Coordinator*  
[Herve.Lefevre@wwfus.org](mailto:Herve.Lefevre@wwfus.org)  
+1-202-459-8533

**Fundo Brasileiro para a Biodiversidade (FUNBIO)**

Rua Voluntários da Pátria, 286 5º andar  
Botafogo, Rio de Janeiro, RJ  
22270-014  
[funbiogef@funbio.org.br](mailto:funbiogef@funbio.org.br)

Attn: Fabio Heuseler Ferreira leite  
GEF Coordinator  
[fabio.leite@funbio.org.br](mailto:fabio.leite@funbio.org.br)  
+ 55 21 2123-5326

*Copy to:*  
[agenciageg@funbio.org.br](mailto:agenciageg@funbio.org.br)

**Banque Ouest Africaine de Développement (BOAD)**

68 Avenue de La Liberation  
1172 - Lomé / Togo

Attn: Mr. Yacoubou Bio-Sawe  
Director of Environment and  
Finance Climate (DEFIC),  
GEF Coordinator  
[ybiosawe@boad.org](mailto:ybiosawe@boad.org)  
+(228)22.232.525.24

*Copy to:*  
*Ibrahim Traore*  
*Head of Finance Climate Division,*  
[itraore@boad.org](mailto:itraore@boad.org)  
+1(228)22.23.26.92

---

**DISTRIBUTION LIST WHEN SUBMITTING PROJECT PROPOSALS  
FOR GEF CEO APPROVAL/ENDORSEMENT**

As a rule, all GEF Agencies are expected to circulate their project proposals to the GEF Secretariat, GEF Agencies, and STAP and to the relevant Convention Secretariat.

**Standard Distribution List for all projects (PIF, PPG, FSP, MSP, and EA):**

gcoordination@thegef.org  
STAP.Secretariat@unenvironment.org  
christopher.whaley@unenvironment.org  
adbgef@adb.org  
bdunn@adb.org  
njahmad@adb.org  
gef\_afdb@afdb.org  
m.assouyouti@afdb.org  
k.lonsway@afdb.org  
ybiosawe@boad.org  
itraore@boad.org  
CAFGEF@caf.com  
rgomezgarcia@caf.com  
lcastro@caf.org  
CIGEF@conservation.org  
lspijkerman@conservation.org  
osamaroo@conservation.org  
DBSAGEF@dbsa.org  
nomsaz@dbsa.org  
ebridgef@ebrd.com  
simonetm@ebrd.com  
GEF-Coordination-Unit@fao.org  
faogef@fao.org  
CBC-Director@fao.org  
Jeffrey.Griffin@fao.org  
FECOGEF@mepfeco.org.cn  
xiao.xuezhi@mepfeco.org.cn  
chen.haijun@mepfeco.org.cn  
yan.wei@mepfeco.org.cn  
FUNBIOGEF@funbio.org.br  
agenciagef@funbio.org.br  
fabio.leite@funbio.org.br  
idb-gef@iadb.org  
jbonilla@iadb.org  
paolap@iadb.org  
ECDmailbox@ifad.org  
p.saintange@ifad.org  
m.astralaga@ifad.org  
l.laganda@ifad.org  
a.nazario@ifad.org  
IUCNGEF@iucn.org  
Cyriaque.Sendashonga@iucn.org  
Sebastien.Delahaye@iucn.org  
jean-yves.piro@iucn.org  
unepgef@unep.org  
Kelly.West@unep.org  
gef@unido.org  
j.hierold@unido.org  
p.mikschofsky@unido.org  
undpgef@undp.org  
adriana.dinu@undp.org  
nancy.bennet@undp.org  
wbgefoperations@worldbank.org  
WWFGEF@wwfus.org  
David.McCauley@wwfus.org  
Herve.Lefeuvre@wwfus.org

**To be included in the Standard Distribution List as appropriate:**

*For Biodiversity Projects:*  
secretariat@cbd.int

*For Climate Change Projects:*  
gefprojects@unfccc.int  
gefenabling.activities@unfccc.int

*For Land Degradation Projects:*  
secretariat@unccd.int  
athust@unccd.int  
*For Mercury Projects*  
jacob.duer@unep.org  
shelia.logan@unep.org

*For POPs Projects:*  
ta@brsmeas.org  
maria.cardenas@brsmeas.org  
frank.moser@brsmeas.org