



# PROGRAM MANAGEMENT

**April 23<sup>rd</sup>, 2018 - April 27<sup>th</sup>, 2018**

A weekly update on the GEF Program Management

## Calendar

- Council Meeting Schedules
- GEFOP Meeting Schedules

## Projects

- GEF Project Concepts, Proposals, Draft Documents Received
- Project Clearances, Approvals, Endorsements and Other Comments

## Contacts

- GEF Secretariat Staff
- GEF Agencies
- GEF Trustee Convention Secretariats

## Communications

- Introducing new staff to the GEFSEC
- Announcements

## SCHEDULE OF FORTHCOMING GEF COUNCIL MEETING

Meetings/Consultations	Dates
GEF Council Consultations with Civil Society	
GEF Council Meeting	
LDCF/SCCF Council Meeting	
STAP Panel Meetings	

### GEF Work Program Calendar for 2018

Events	Dates
Receipt deadline for PIF/PFD	March 9
Draft Cover Note to Agencies, ConvSec, STAP	May 18
Inter-Agency Meeting with ConvSec, STAP	May 24
Posting of Work Program	May 29
Council Meeting	June 24-26
Council Approval	June 26

**Kindly see the link to the compilation of council comments for the November 2017 GEF Work Program**

**<https://www.thegef.org/sites/default/files/work-program-documents/Compilation%20of%20Council%20Comments%20-%20November%202017%20Work%20Program.pdf>**

**Fiscal Year '18**  
**Country Support Program Activities**  
**Expanded Constituency Workshops**

**Constituency Meetings**

**June 11 - 13, 2018**

**Switzerland**

***Venue: TBD***

**June 23, 2018**

**Asia Pacific**

***Venue: Furama Hotel, Da Nang***

**South Asia**

***Venue: Furama Hotel, Da Nang***

**East Asia**

***Venue: Furama Hotel, Da Nang***

## Requests Received from GEF Agencies

April 23 - 27, 2018

GEF ID	IA ID	Type	Focal Area	Decision Sought	Proponent	Country	Project Title	Program Manager	Date Received
<u>AfDB</u>									
8014		FP	Climate Change	CEO endorsement of FSP	AfDB	Lesotho	Climate Change Adaptation for Sustainable Rural Water Supply in Lowlands Lesotho	Dustin Schinn	20-Apr-18
9420		FP	International Waters	CEO endorsement of FSP	AfDB	Regional (Malawi, Tanzania)	Strengthening Trans-boundary Cooperation and Integrated Natural Resources Management in the Songwe River Basin	Astrid Hillers	26-Apr-18
<u>CI</u>									
9814		MSP	Climate Change	CEO MSP Approval	CI	Uganda	Strengthening the Capacity of Institutions in Uganda to Comply with the Transparency Requirements of the Paris Agreement	Dustin Schinn	27-Apr-18

GEF ID	IA ID	Type	Focal Area	Decision Sought	Proponent	Country	Project Title	Program Manager	Date Received
<b>FAO</b>									
9435		FP	Biodiversity	CEO endorsement of FSP	FAO	Cuba	Introduction of New Farming Methods for the Conservation and Sustainable Use of Biodiversity, including Plant and Animal Genetic Resources, in Production Landscapes in Selected Areas of Cuba	Sarah Wyatt	23-Apr-18
9968		MSP	Climate Change	CEO PIF Approval	FAO	Global	Building global capacity to increase transparency in the forest sector (CBIT-Forest)	Milena Vasquez	23-Apr-18
10054		MSP	Climate Change	CEO MSP Approval	FAO	Dominican Republic	Promoting Climate-smart Livestock Management in the Dominican Republic	Asha Bobb-Semple	24-Apr-18
10056		MSP	Biodiversity	CEO MSP Approval	FAO	Regional (Argentina, Bolivia, Chile, Colombia, Costa Rica, Ecuador, Venezuela)	Collaborative implementation of Regional Strategy for the Conservation and Sustainable Use of High Andean Wetlands through improved management effectiveness of sites	Mark Zimsky	27-Apr-18
<b>IUCN</b>									
9520		FP	Multi Focal Area	CEO endorsement of FSP	IUCN	Myanmar	The Restoration Initiative (TRI) Myanmar, Reversing forest degradation and deforestation and restoring forest landscapes through local multi-stakeholder management	Ulrich Apel	27-Apr-18

GEF ID	IA ID	Type	Focal Area	Decision Sought	Proponent	Country	Project Title	Program Manager	Date Received
<b>UNDP</b>									
9592	5697	FP	International Waters	CEO endorsement of FSP	UNDP	Regional (Chile, Peru)	Catalysing Implementation of a Strategic Action Programme for the Sustainable Management of Shared Living Marine Resources in the Humboldt Current System (HCS)	Christian Severin	20-Apr-18
9424	5761	FP	Multi Focal Area	CEO endorsement of FSP	UNDP	Dominican Republic	Mainstreaming Conservation of Biodiversity and Ecosystem Services in Productive Landscapes in Threatened Forested Mountainous Areas	Sarah Wyatt	23-Apr-18
9388	5837	FP	Land Degradation	CEO endorsement of FSP	UNDP	Lebanon	Land Degradation Neutrality of Mountain Landscapes in Lebanon	Ulrich Apel	23-Apr-18
10051	6202	MSP	Climate Change	CEO PIF Approval	UNDP	Djibouti	Promoting a better access to modern energy services through sustainable mini-grids and hybrid technologies in Djibouti	Ming Yang	24-Apr-18
10029	6211	MSP	Climate Change	CEO PIF Approval	UNDP	Serbia	Establishing Transparency Framework for the Republic of Serbia	Akio Takemoto	24-Apr-18
9266	5519	FP	Multi Focal Area	CEO endorsement of FSP	UNDP	Eritrea	Restoring Degraded Forest Landscapes and Promoting Community-based, Sustainable and Integrated Natural Resource Management in the Rora Habab Plateau, Nakfa Sub-zoba, Northern Red Sea Region of Eritrea	Jaime Cavelier	26-Apr-18

<b>GEF ID</b>	<b>IA ID</b>	<b>Type</b>	<b>Focal Area</b>	<b>Decision Sought</b>	<b>Proponent</b>	<b>Country</b>	<b>Project Title</b>	<b>Program Manager</b>	<b>Date Received</b>
9536	5507	FP	Biodiversity	CEO endorsement of FSP	UNDP	Papua New Guinea	Sustainable Financing of Papua New Guinea's Protected Area Network	Cyrille Barnerias	27-Apr-18
9429	5760	FP	Multi Focal Area	CEO endorsement of FSP	UNDP	Cuba	Incorporating Multiple Environmental Considerations and their Economic Implications into the Management of Landscapes Forests and Production Sectors in Cuba	Sarah Wyatt	27-Apr-18
10041	6196	FP	Multi Focal Area	CEO PIF Clearance for WPI	UNDP	Regional (Marshall Islands, Palau, Tuvalu)	Managing Coastal Aquifers in Selected Pacific SIDS	Christian Severin	27-Apr-18

## UNEP

9976		FP	Climate Change	CEO PIF Clearance for WPI	UNEP	Mauritania	Climate change adaptation and livelihoods in three arid regions of Mauritania	Dustin Schinn	25-Apr-18
10055		MSP	Biodiversity	CEO PIF Approval	UNEP	Ukraine	Mainstreaming Conservation of Biodiversity into Road Transportation Development Plans of Ukraine	Ulrich Apel	27-Apr-18
10055		MSP	Biodiversity	CEO PPG approval	UNEP	Ukraine	Mainstreaming Conservation of Biodiversity into Road Transportation Development Plans of Ukraine	Ulrich Apel	27-Apr-18

GEF ID	IA ID	Type	Focal Area	Decision Sought	Proponent	Country	Project Title	Program Manager	Date Received
<u>UNIDO</u>									
9423		FP	Climate Change	CEO endorsement of FSP	UNIDO	Egypt	Egyptian Programme for Promoting Industrial Motor Efficiency	Ming Yang	23-Apr-18



# Responses to Proponents

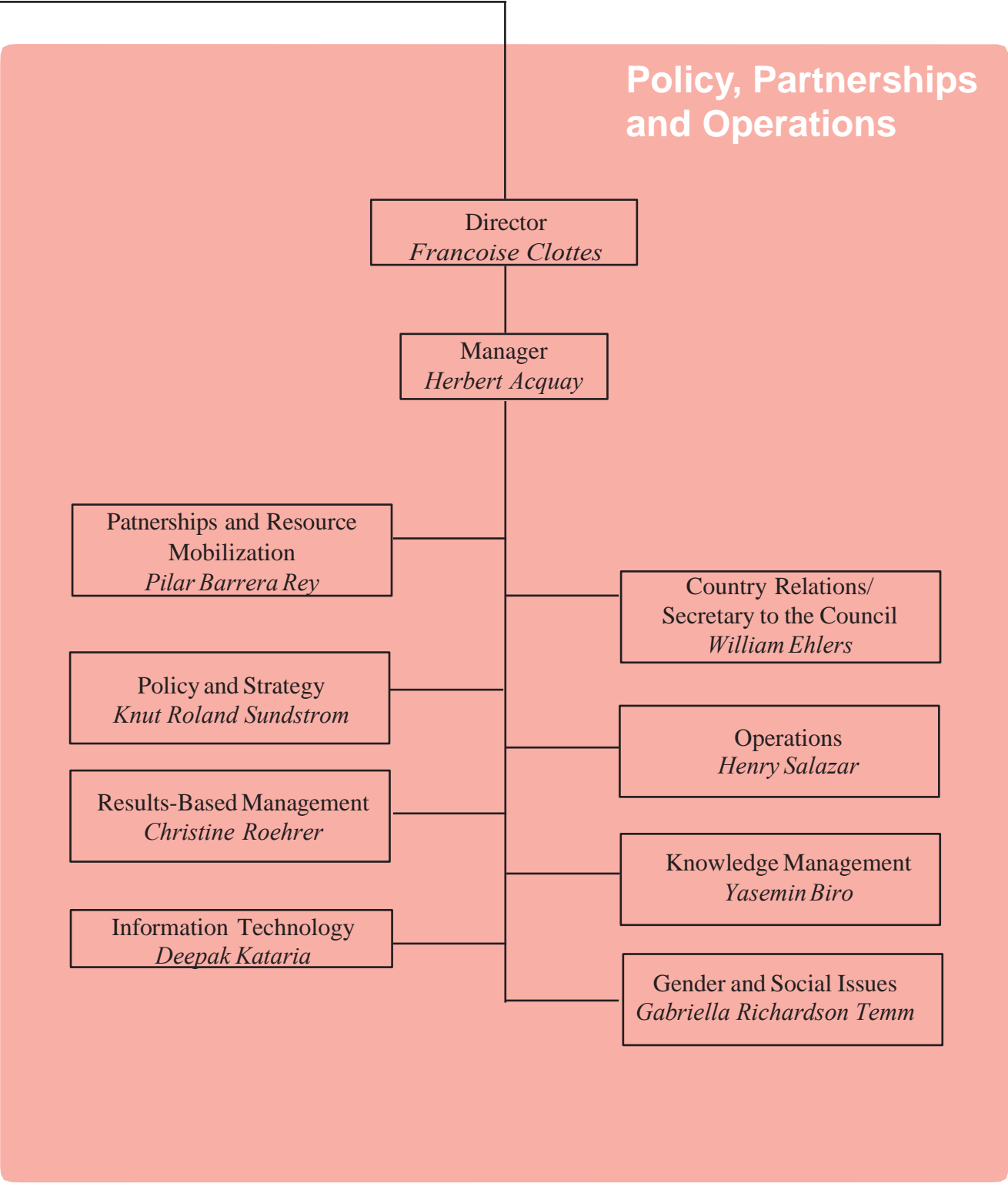
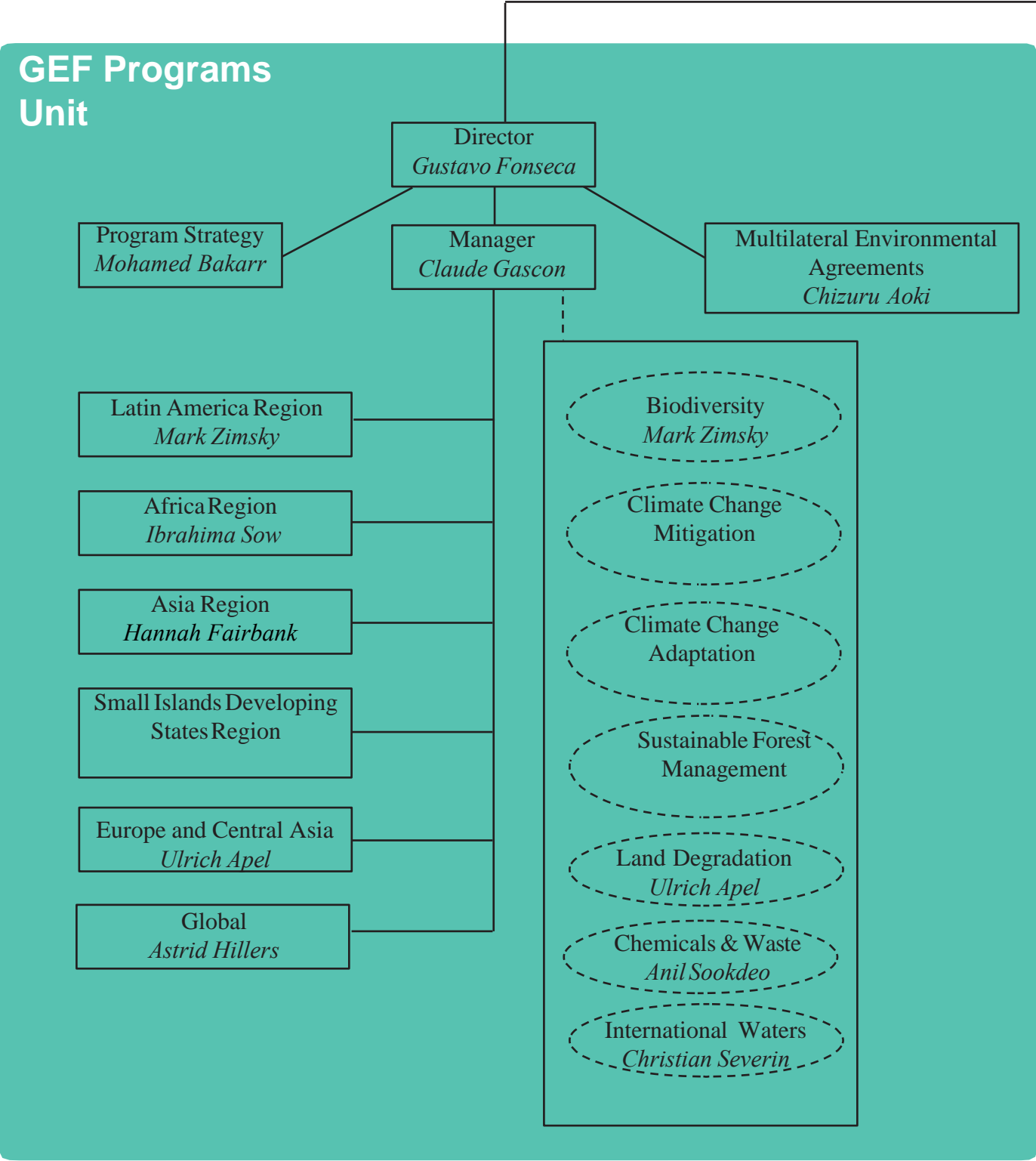
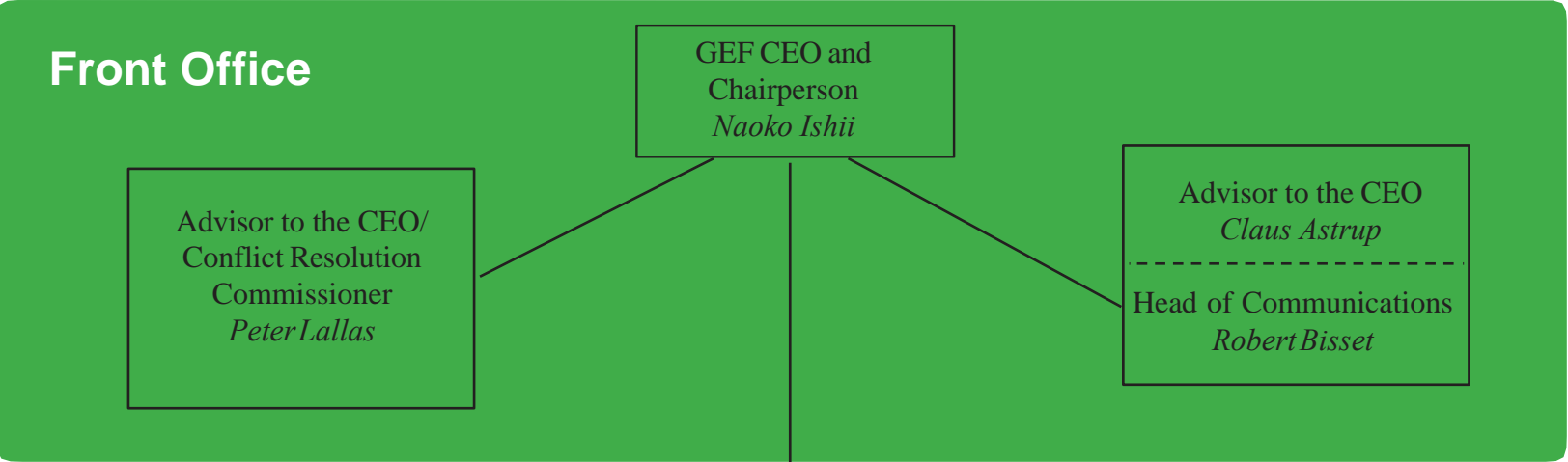
April 23 - 27, 2018

ID	IA ID	Type	Focal Area	Decision Sought	Proponen	Country	Project Title	Program Manage	Response Date	Remarks
<b>FAO</b>										
9294		FP	Multi Focal Area	CEO endorsement of FSP	FAO	Mauritania	Integrated Ecosystem Management Program for the Sustainable Human Development in Mauritania	Jean-Marc Sinnassamy	12-Apr-18	Review Sheet sent to Agency for FSP revision
#####		FP	Climate Change	CEO PIF Clearance for WPI	FAO	Equatorial Guinea	Promoting Community-Based Forestry for Climate Change Mitigation and Sustainable Livelihoods in Equatorial Guinea.	Pascal Martinez	23-Apr-18	PIF recommended for CEO clearance
9285		FP	Multi Focal Area	CEO endorsement of FSP	FAO	Afghanistan	Community-based Sustainable Land and Forest Management in Afghanistan	Manuela Ravina da Silva	24-Apr-18	FSP recommended for endorsement
9556		FP	Multi Focal Area	CEO endorsement of FSP	FAO	Kenya	Restoration of Arid and Semi-arid lands (ASAL) of Kenya through Bio-enterprise Development and other Incentives under The Restoration Initiative	Jean-Marc Sinnassamy	24-Apr-18	FSP endorsed by CEO
9517		FP	Multi Focal Area	CEO endorsement of FSP	FAO	Sao Tome and Principe	Landscape Restoration for Ecosystem Functionality and Climate Change Mitigation in the Republic of Sao Tome e Principe	Asha Bobb-Semple	24-Apr-18	FSP endorsed by CEO
9516		FP	Multi Focal Area	CEO endorsement of FSP	FAO	Pakistan	Reversing Deforestation and Degradation in High Conservation Value Chilgoza Pine Forests in Pakistan	Pascal Martinez	25-Apr-18	FSP endorsed by CEO

<b>ID</b>	<b>IA ID</b>	<b>Type</b>	<b>Focal Area</b>	<b>Decision Sought</b>	<b>Proponen</b>	<b>Country</b>	<b>Project Title</b>	<b>Program Manage</b>	<b>Response Date</b>	<b>Remarks</b>
9285		FP	Multi Focal Area	CEO endorsement of FSP	FAO	Afghanistan	Community-based Sustainable Land and Forest Management in Afghanistan	Manuela Ravina da Silva	26-Apr-18	FSP endorsed by CEO
<b>UNDP</b>										
9899	6173	FP	Climate Change	CEO PIF Clearance for WPI	UNDP	Philippines	Supporting Cities to Achieve Low-Emission Urban Pathways (SCALEUP)	Xiaomei Tan	20-Mar-18	PIF recommended for CEO clearance (Technically cleared)
9570	5908	MSP	Chemicals and Waste	CEO MSP Approval	UNDP	Gambia	Capacity Building for PCBs and U-POPs in The Gambia	Akio Takemoto	23-Apr-18	MSP sent to Agency for revision
9899	6173	FP	Climate Change	CEO PIF Clearance for WPI	UNDP	Philippines	Supporting Cities to Achieve Low-Emission Urban Pathways (SCALEUP)	Xiaomei Tan	24-Apr-18	PIF recommended for CEO clearance
9506	5798	MSP	Multi Focal Area	CEO MSP Approval	UNDP	Sudan	Strengthening Targeted National Capacities for Improved Decision Making and Mainstreaming of Global Environmental Obligations	Susan Waithaka	24-Apr-18	MSP approved by CEO (Approval letter sent to Agency on 4/25/18)

<b>ID</b>	<b>IA ID</b>	<b>Type</b>	<b>Focal Area</b>	<b>Decision Sought</b>	<b>Proponen</b>	<b>Country</b>	<b>Project Title</b>	<b>Program Manage</b>	<b>Response Date</b>	<b>Remarks</b>
9857	5475	FP	Multi Focal Area	CEO endorsement of FSP	UNDP	Global (Afghanistan, Albania, Armenia, Bahamas, China, Cuba, Ethiopia, Georgia, Jordan, St. Kitts And Nevis, Lao PDR, St. Lucia, Marshall Islands, Mali, Niger, Nigeria, Papua New Guinea, Palau, Sierra Leone, Turkey, Tuvalu, Tanzania, Ukraine, Uganda)	GEF SGP Sixth Operational Phase- Strategic Implementation using STAR Resources, Tranche 2 (Part IV)	Maria Del Pilar Barrera Rey	24-Apr-18	FSP endorsed by CEO (sent to Agency on 4/25/18)
#####	5267	EA	Climate Change	CEO EA Approval	UNDP	Algeria	Third National Communication and First Biennial Update Report of Algeria to the UNFCCC	Milena Vasquez	25-Apr-18	EA recommended for CEO approval (PM EA recommended for CEO Approval)
9463	5379	FP	Biodiversity	CEO endorsement of FSP	UNDP	China	Strengthening Marine Protected Areas in SE China to conserve globally significant coastal biodiversity	Leah Karrer	25-Apr-18	Review Sheet sent to Agency for FSP revision
#####	6202	MSP	Climate Change	CEO PIF Approval	UNDP	Djibouti	Promoting a better access to modern energy services through sustainable mini-grids and hybrid technologies in Djibouti	Ming Yang	25-Apr-18	PIF recommended for CEO approval (Technically cleared)
9165	4736	FP	International Waters	CEO endorsement of FSP	UNDP	Regional (Egypt, Libya, Sudan, Chad)	Enabling Implementation of the Regional SAP for the Rational and Equitable Management of the Nubian Sandstone Aquifer System (NSAS)	Astrid Hillers	27-Apr-18	FSP recommended for endorsement

ID	IA ID	Type	Focal Area	Decision Sought	Proponen	Country	Project Title	Program Manage	Response Date	Remarks
<b>UNEP</b>										
#####		MSP	Biodiversity	CEO PIF Approval	UNEP	Regional (Armenia, Azerbaijan, Georgia)	Upscaling of Global Forest Watch in Caucasus Region	Ulrich Apel	17-Apr-18	Review Sheet sent to Agency for PIF revision
9526		FP	Multi Focal Area	CEO endorsement of FSP	UNEP	Kenya	Enhancing integrated natural resource management to arrest and reverse current trends in biodiversity and land degradation for increased ecosystem services in the Tana Delta, Kenya	Manuela Ravina da Silva	24-Apr-18	Review Sheet sent to Agency for FSP revision
9869		FP	Climate Change	CEO PIF Clearance for WPI	UNEP	Dominican Republic	Strengthening the capacity of the Dominican Republic to generate climate information and knowledge in the framework of the Paris Agreement	Milena Vasquez	25-Apr-18	Review Sheet sent to Agency for PIF revision
9408		FP	Biodiversity	CEO endorsement of FSP	UNEP	Regional (Antigua And Barbuda, Barbados, Dominica, Grenada, St. Kitts And Nevis, St. Lucia, St. Vincent and Grenadines)	Preventing COSTS of Invasive Alien Species (IAS) in Barbados and the OECS Countries	Sarah Wyatt	25-Apr-18	FSP endorsed by CEO
<b>UNIDO</b>										
9423		FP	Climate Change	CEO PIF Clearance for WPI	UNIDO	Egypt	Egyptian Programme for Promoting Industrial Motor Efficiency	Ming Yang	25-Apr-18	Review Sheet sent to Agency for PIF revision



**Naoko Ishii**  
Chief Executive Officer and Chairperson  
[nishii@thegef.org](mailto:nishii@thegef.org)

## FRONT OFFICE

**Peter Lallas**

Advisor to the Chief Executive Officer  
[plallas@thegef.org](mailto:plallas@thegef.org)  
+1 202 473 9732

**Amornrat Ning Poopech**

Resource Management Officer  
[apoopech@thegef.org](mailto:apoopech@thegef.org)  
+1 202 458 4366

**Esther Pormes**

Senior Executive Assistant  
[epormes@thegef.org](mailto:epormes@thegef.org)  
+1 202 473 8736

**Claus Pram Astrup**

Advisor to the Chief Executive Officer  
[castrup@worldbank.org](mailto:castrup@worldbank.org)  
+ 1 202 478 7270

**Julienne Kouame**

Program Analyst  
[jkouame@thegef.org](mailto:jkouame@thegef.org)  
+1 202 473 8736

**Diego Riano Posada**

Special Assistant  
[drianoposada@thegef.org](mailto:drianoposada@thegef.org)  
+1 202 473 1444

## Communications

**Robert Bisset**

Head of Communications  
[rbisset@thegef.org](mailto:rbisset@thegef.org)  
+1 202 458 5191

**Patrizia Cocca**

Communications Officer and KM Coordinator  
[pcocca@thegef.org](mailto:pcocca@thegef.org)  
+1 202 458 0234

**Alua Satybaldina-Kennedy**

Communications Consultant  
[asatybaldina@worldbank.org](mailto:asatybaldina@worldbank.org)

**Christian Hofer**

Senior Communications Officer  
[chofer@thegef.org](mailto:chofer@thegef.org)  
+1 202 458 0936

**Camila Perez Gabilondo**

Communications Associate  
[cperez@thegef.org](mailto:cperez@thegef.org)  
+1 202 458 0895

**Olivier Besson**

Program Assistant  
[obesson@thegef.org](mailto:obesson@thegef.org)  
+1 202 473-8935

---

Mailing Address:

**GEF Secretariat**

1818 H Street, NW, MSN N8-800  
Washington, D.C. 20433  
+1 202 473 0508; Fax: +1 202 522 3240/3245

## POLICY AND OPERATIONS

### Francoise Clottes

Director

[fclottes@thegef.org](mailto:fclottes@thegef.org)

+1 202 473 8471

#### Akila Nazneen

Senior Financial Assistant

[anazneen@thegef.org](mailto:anazneen@thegef.org)

+1 202 473 1760

#### Amanda Adams

Program Assistant

[aadams@thegef.org](mailto:aadams@thegef.org)

+1 202 473 9878

#### Christina Bogyo

Senior Program Assistant

[cbogyo@thegef.org](mailto:cbogyo@thegef.org)

+1 202 473 6974

#### Christine Roehrer

Coordinator –Lead Results Based Management

[croehrer@worldbank.org](mailto:croehrer@worldbank.org)

+1 202 473-0337

#### Deepak Kataria

Coordinator - Information Technology

[dkataria@thegef.org](mailto:dkataria@thegef.org)

+1 202 473 3881

#### Gabriella Richardson-Temm

Coordinator – Gender and Social Issues

[grichardsontemm@thegef.org](mailto:grichardsontemm@thegef.org)

#### Henry Salazar

Coordinator - Operations

[hsalazar@thegef.org](mailto:hsalazar@thegef.org)

+1 202 473 8226

#### Herbert Acquay

Manager - Policy, Partnerships and Operations

[hacquay@worldbank.org](mailto:hacquay@worldbank.org)

+1 202 473 1043

#### Juman Byun

Business Solutions Officer

[jbyun@thegef.org](mailto:jbyun@thegef.org)

+1 202 458 7987

#### Knut Roland Sundstrom

Coordinator - Policy and Strategy

[ksundstrom@thegef.org](mailto:ksundstrom@thegef.org)

+1 202 473 7510

#### Lesly Rigaud

Client Technologies Officer

[lrigaud@thegef.org](mailto:lrigaud@thegef.org)

+1 202 473 3881

#### Minna Maria Kononen

Country Relations Officer

[nkononen@thegef.org](mailto:nkononen@thegef.org)

+1 202 473 9402

#### Naiying Peng

Operations Analyst

[npeng@thegef.org](mailto:npeng@thegef.org)

+1 202 458 9580

#### Nicolas Alejandro Marquez Pizzanelli

Operations Analyst

[nmarquez@thegef.org](mailto:nmarquez@thegef.org)

+1 202 473 9522

#### Olha Krushelnytska

Operations Officer

[okrushelnytska@thegef.org](mailto:okrushelnytska@thegef.org)

+1 202 458 5839

**Omid Parhizkar**  
Operations Officer  
[oparhizkar@thegef.org](mailto:oparhizkar@thegef.org)  
+1 202 458 2186

**Pilar Barrera**  
Coordinator - Partnerships and  
Resource Mobilization  
[pbarrera@thegef.org](mailto:pbarrera@thegef.org)  
+1 202 458 9891

**Raul Rodriguez**  
Temporary  
[rrodriguez@thegef.org](mailto:rrodriguez@thegef.org)

**Regine Mpoyi**  
Program Assistant  
[rmpoyi@thegef.org](mailto:rmpoyi@thegef.org)  
+1 202 473 2754

**Seo-Jeong Yoon**  
Policy Officer  
[syoon@thegef.org](mailto:syoon@thegef.org)  
+1 202 473 7832

**Susan Waithaka**  
Country Relations Officer  
[swaithaka1@thegef.org](mailto:swaithaka1@thegef.org)  
+1 202 473 5457

**William Ehlers**  
Coordinator – Country Relations/  
Secretary to the Council  
[wehlers@thegef.org](mailto:wehlers@thegef.org)  
+1 202 458 9436

**Oreste Maia Andrade**  
Operations Analyst  
[omaiaandradejr@thegef.org](mailto:omaiaandradejr@thegef.org)  
+1 202 458 9387

**Quynh Xuan Thi Phan**  
Senior Financial Specialist  
[qphan1@worldbank.org](mailto:qphan1@worldbank.org)  
+1 202 458 4760

**Ramon Prudencio C de Mesa**  
Operations Officer  
[rmesa@thegef.org](mailto:rmesa@thegef.org)  
+1 202 458 9285

**Robert Schreiber**  
Program Coordinator  
[rschreiber@thegef.org](mailto:rschreiber@thegef.org)  
+1 202 458 0288

**Sonja Sabita Teelucksingh**  
Senior Environmental Specialist  
[steelucksingh@thegef.org](mailto:steelucksingh@thegef.org)  
+1 202 458 4004

**Thomas Biegel**  
Consultant  
[tbiegel@thegef.org](mailto:tbiegel@thegef.org)  
+1 202 473 9252

**Yasemin Biro**  
Coordinator - Knowledge Management  
[ybiro@thegef.org](mailto:ybiro@thegef.org)  
+1 202 473 1550

---



## PROGRAMS

### **Gustavo Fonseca**

Director

[gfonsecal@thegef.org](mailto:gfonsecal@thegef.org)

+ 1 202 458 4818

#### **Akio Takemoto**

Senior Environmental Specialist

[atakemoto@thegef.org](mailto:atakemoto@thegef.org)

+1 202 458 2789

#### **Anil Bruce Sookdeo**

Chemicals and Waste Focal Area  
Coordinator

[asookdeo@thegef.org](mailto:asookdeo@thegef.org)

+1 202 458 0683

#### **Astrid Hillers**

Senior Environmental Specialist

[ahillers@thegef.org](mailto:ahillers@thegef.org)

+1 202 458 8173

#### **Christian Severin**

International Waters Focal Area Coordinator

[cseverin@thegef.org](mailto:cseverin@thegef.org)

+1 202 458 2001

#### **Cyrille Barnerias**

Senior Environment Specialist

[cbarnerias@thegef.org](mailto:cbarnerias@thegef.org)

+1 202 473 8871

#### **Evelyn Swain**

Senior Environment Specialist

[eswain@thegef.org](mailto:eswain@thegef.org)

+1 202 473 1151

#### **Flavius Mihaies**

Consultant, Climate and Chemicals

[fmihaies@thegef.org](mailto:fmihaies@thegef.org)

+1 202 560 4934

#### **Hannah Fairbank**

Senior Biodiversity Specialist

[hfairbank@thegef.org](mailto:hfairbank@thegef.org)

#### **Asha Imani Bobb Semple**

Operations Analyst

[abobbsemples@thegef.org](mailto:abobbsemples@thegef.org)

+1 202 473 989

#### **Chizuru Aoki**

Lead Environmental Specialist -  
Multilateral Environmental  
Agreements [caoki@thegef.org](mailto:caoki@thegef.org)

+1 202 473 6068

#### **Claude Gascon**

Lead Program Manager

[cgascon@thegef.org](mailto:cgascon@thegef.org)

+1 202 458 9755

#### **Dustin Schinn**

Climate Change Specialist

[dschinn@thegef.org](mailto:dschinn@thegef.org)

+1 202 458 1234

#### **Fareeha Iqbal**

Senior Climate Change Specialist

[fiqbal1@thegef.org](mailto:fiqbal1@thegef.org)

+1 202 458 9593

#### **Glynis Barber**

Program Assistant

[gbarber@thegef.org](mailto:gbarber@thegef.org)

+1 202 473 9647

#### **Ibrahima Sow**

Africa Regional Coordinator

[isow@thegef.org](mailto:isow@thegef.org)

+ 1 202 473 2716

**Jaime Cavelier**  
Senior Biodiversity Specialist  
[jcavelier@thegef.org](mailto:jcavelier@thegef.org)  
+1 202 473 4886

**Jean-Marc Sinnassamy**  
Senior Environmental Specialist  
[jsinnassamy@thegef.org](mailto:jsinnassamy@thegef.org)  
+1 202 473 8060

**Katya Yuh Kuang-Idba**  
Climate Change Specialist  
[kkuangidba@thegef.org](mailto:kkuangidba@thegef.org)  
+1 202 473 4364

**Kettly Denis**  
Program Assistant  
[kdenis@thegef.org](mailto:kdenis@thegef.org)  
+1 202 473 0825

**Leah Karrer**  
Senior Environmental Specialist  
[lkarrer@thegef.org](mailto:lkarrer@thegef.org)  
+1 202 473 8364

**Mark Zimsky**  
Latin America Regional Coordinator/  
Biodiversity Focal Area Coordinator  
[mzimsky@thegef.org](mailto:mzimsky@thegef.org)  
+1 202 473 7855

**Milena Gonzalez Vasquez**  
Junior Professional Associate  
[mgonzalezvasquez@thegef.org](mailto:mgonzalezvasquez@thegef.org)  
+1 202 458 1284

**Manuela Ravina da Silva**  
Junior Professional Officer  
[mravinadasilva@thegef.org](mailto:mravinadasilva@thegef.org)  
+1 202 473 3231

**Mohamed Imam Bakarr**  
Lead Environmental Specialist - Program  
Strategy [mbakarr@thegef.org](mailto:mbakarr@thegef.org)  
+1 202 458 8890

**Ming Yang**  
Senior Climate Change Specialist  
[myang@thegef.org](mailto:myang@thegef.org)  
+1 202 473 5707

**Nhu Quynh Phan**  
Program Assistant  
[nphan@thegef.org](mailto:nphan@thegef.org)  
+1 202 473 4236

**Monica Fernandes**  
Senior Program Assistant  
[mfernandes@thegef.org](mailto:mfernandes@thegef.org)  
+1 202 473 9647

**Pascal Martinez**  
Senior Climate Change Specialist  
[pmartinez2@thegef.org](mailto:pmartinez2@thegef.org)  
+1 202 458-9755

**Paul Hartman**  
Senior Environmental Specialist  
[phartman@thegef.org](mailto:phartman@thegef.org)

**Shakil Kayani**  
Program Assistant  
[skayani@thegef.org](mailto:skayani@thegef.org)  
+1 202 458 4680

**Sarah Wyatt**  
Operations Analyst  
[swyatt@thegef.org](mailto:swyatt@thegef.org)  
+1 202 473 0534

**Steffen Hansen**  
Environmental Specialist  
[shansen@thegef.org](mailto:shansen@thegef.org)  
+1 202 458 8796

**Tigest Tirfe**  
Program Assistant  
[ttirfe@thegef.org](mailto:ttirfe@thegef.org)  
+1 202 458 9297

**Ulrich Apel**  
Europe and Central Asia Regional Coordinator/  
Land Degradation Focal Area Coordinator  
[uapel@thegef.org](mailto:uapel@thegef.org)  
+1 202 473 2573

**Xiaomei Tan**  
Senior Climate Change Specialist  
[xtan1@thegef.org](mailto:xtan1@thegef.org)  
+1 202 473 7448

---

# INDEPENDENT EVALUATION OFFICE

## Juha Uitto

Director

GEF Independent Evaluation Office

[juitto@thegef.org](mailto:juitto@thegef.org)

### Anupam Anand

Evaluation Officer

[aanand2@thegef.org](mailto:aanand2@thegef.org)

+202-473-3147

### Geeta Batra

Deputy Director and  
Chief Evaluation Officer

[gbatra@thegef.org](mailto:gbatra@thegef.org)

+202-473-4442

### Carlo Carugi

Senior Evaluation Officer

[ccarugi@thegef.org](mailto:ccarugi@thegef.org)

+1 202 473 8154

### Anna Viggh

Senior Evaluation Officer

[aviggh@worlbank.org](mailto:aviggh@worlbank.org)

+1 202 4738896

### Kseniya Temnenko

Knowledge Management Officer

[ktemnenko@thegef.org](mailto:ktemnenko@thegef.org)

+1 202 458 4908

### Jeneen Garcia

Evaluation Officer

[jgarcia2@thegef.org](mailto:jgarcia2@thegef.org)

+1 202 458 2719

### Francisco Grahammer

Information Analyst

[fgrahammer@thegef.org](mailto:fgrahammer@thegef.org)

+1 202 473 4914

### Kyoko Matsumoto

Senior Evaluation Officer

[kmatsumoto@thegef.org](mailto:kmatsumoto@thegef.org)

+1 202 473 2609

### Marie-Constance Manuella Koukoui

Senior Executive Assistant

[mkoukoui@thegef.org](mailto:mkoukoui@thegef.org)

+1 202 458 9682

### Khondoker Tanveer Haider

Consultant

[khaider@thegef.org](mailto:khaider@thegef.org)

### Neeraj Kumar Negi

Senior Evaluation Officer

[nnegi1@thegef.org](mailto:nnegi1@thegef.org)

+1 202 473 2259

### Juan Portillo

Senior Operations Officer

[jportillo@worlbank.org](mailto:jportillo@worlbank.org)

+1 202 473 6056

### Baljit Wadhwa

Senior Evaluation Officer

[bwadhwa@worlbank.org](mailto:bwadhwa@worlbank.org)

+1 202 473 0266

### Dennis Bours

Evaluation Officer

[sdbours@thegef.org](mailto:sdbours@thegef.org)

+1 202 458 9153

### Malac Kabir

Research Assistant

[mkabir4@thegef.org](mailto:mkabir4@thegef.org)

+1 202 473 1808

### Molly Watts

Evaluation Analyst

[mwatts1@thegef.org](mailto:mwatts1@thegef.org)

+1 202 473 3675

### Sara El Choufi

Evaluation Analyst

[selchoufi@thegef.org](mailto:selchoufi@thegef.org)

+1 202 458 7069

### Peixuan Zhou

Evaluation Analyst

[pzhou2@thegef.org](mailto:pzhou2@thegef.org)

+1 202 473 1703

### Evelyn Chihuguyu

Program Assistant

[echihuguyu@thegef.org](mailto:echihuguyu@thegef.org)

+1 202 473 0654

### Laura Reynolds Nissley

Consultant

[lnissley@thegef.org](mailto:lnissley@thegef.org)

## ADAPTATION FUND BOARD SECRETARIAT

**Mikko Antti Ollikainen**  
Manager  
[mollikainen@adaptation-fund.org](mailto:mollikainen@adaptation-fund.org)  
+1 202 458 8912

**Daouda Ben Oumar Ndiaye**  
Senior Climate Change Specialist  
[dndiaye@adaptation-fund.org](mailto:dndiaye@adaptation-fund.org)  
+1 202 473 4611

**Silvia Mancini**  
Operations Officer  
[smancini@adaptation-fund.org](mailto:smancini@adaptation-fund.org)

**Uchij c'F qdctf | k**  
EW[ad5'[\_ SFW5ZS` YWbW[S]ef  
[uf qdctf | kEB cf cr vclqp/hwpf Qti](mailto:uf qdctf | kEB cf cr vclqp/hwpf Qti)  
- "424"695"7; 65

**Aya Mimura**  
Operations Associate  
[amimura@adaptation-fund.org](mailto:amimura@adaptation-fund.org)  
+1 202 458 7347

**Young Hee Lee**  
Operations Analyst  
[ylee12@adaptation-fund.org](mailto:ylee12@adaptation-fund.org)  
+1 202 473 8219

**Sophie Hans-Moevi**  
Senior Program Assistant  
[shansmoevi@adaptation-fund.org](mailto:shansmoevi@adaptation-fund.org)  
+1 202 473 0701

**Farayi Onias Madziwa**  
Program Officer  
[fmadziwa@adaptation-fund.org](mailto:fmadziwa@adaptation-fund.org)  
+1 202 458 5184

**Matthew Pueschel**  
Consultant  
[mpueschel@adaptation-fund.org](mailto:mpueschel@adaptation-fund.org)  
+1 202 473 6743

**Hugo Remaury**  
Junior Professional Associate  
[hremaury@adaptation-fund.org](mailto:hremaury@adaptation-fund.org)  
+1 202 473 5463

**Anni Rein**  
Temporary  
[arein@adaptation-fund.org](mailto:arein@adaptation-fund.org)  
+1 202 458 9758

**Alicia Marie Austin** Temporary  
[aaustin@adaptation-fund.org](mailto:aaustin@adaptation-fund.org)  
+1 202 458 9758

---

## GEF DIRECTORY OF ADDRESSEES

### GEF Secretariat

**GEF Secretariat<sup>1</sup>**  
**Program Coordination Registry**  
1818 H Street, NW  
Washington, D.C. 20433, USA  
[gcoordination@thegef.org](mailto:gcoordination@thegef.org)

Attn: Mr. Henry Salazar  
Coordinator - Operations  
[hsalazar@thegef.org](mailto:hsalazar@thegef.org)  
+1 202 473 8226

### GEF Trustee

**International Bank for Reconstruction and Development (The World Bank) Registry**  
1818 H Street, NW  
Washington, D.C. 20433, USA  
[geftrustee@worldbank.org](mailto:geftrustee@worldbank.org)

Mr. Praveen Desabatla  
Team Leader, DFPTF  
[pdesabatla@worldbank.org](mailto:pdesabatla@worldbank.org)  
+1 202 458 2099

### Convention Secretariats

**UN Convention on Biological Diversity (CBD)**  
413 rue Saint-Jacques, Suite 800  
Montreal, Quebec, Canada H2Y 1 N9  
[Secretariat@cbd.int](mailto:Secretariat@cbd.int)

Attn: Ms. Cristiana Paşca Palmer  
Executive Secretary  
*GEF Contact Person: Ailis Rego*  
[ailis.rego@cbd.int](mailto:ailis.rego@cbd.int)

**UN Framework on Climate Change Convention (UNFCCC)**  
Haus Carstanjen  
Martin Luther King Strasse 8  
53175 Bonn, Germany  
[secretariat@unfccc.int](mailto:secretariat@unfccc.int)

Attn: Ms. Patricia Espinosa  
Executive Secretary  
*GEF Contact Person(s):*  
- *Ms. Deschen Tsering*  
[DTsering@unfccc.int](mailto:DTsering@unfccc.int)  
  
- *Mr. Alejandro Kilpatrick*  
[AKilpatrick@unfccc.int](mailto:AKilpatrick@unfccc.int)

[gefenabling.activities@unfccc.int](mailto:gefenabling.activities@unfccc.int)  
[gefprojects@unfccc.int](mailto:gefprojects@unfccc.int)

**Secretariat of the Basel, Rotterdam and Stockholm Conventions**  
UNEP International Environment House 1  
11-13 Chemin des Anemones  
1219 Chatelaine, Geneva, Switzerland

Attn: Dr. Rolph Payet  
Executive Secretary  
*Mr. Frank Moser*  
*GEF Focal Point*  
*Office of the Executive Secretary*  
[frank.moser@brsmeas.org](mailto:frank.moser@brsmeas.org)  
+41 22 917 8951

---

<sup>1</sup> GEF Secretariat's physical address: 1899 Pennsylvania Avenue, NW, Washington, D.C. 20006

---

**UN Convention to Combat Desertification  
(UNCCD)**

Herrmann-Ehlers Str. 10  
D-53113 Bonn, Germany  
[secretariat@unccd.int](mailto:secretariat@unccd.int)

Attn: Ms. Monique Barbut  
Executive Secretary

*GEF Contact Person: Ms. Anja Thust  
Program Officer, FCMI Unit*

[athust@unccd.int](mailto:athust@unccd.int)  
+49 228 815 2828

---

**Interim Secretariat of the Minamata Convention**

International Environment House 1  
13, chemin des Anémones  
CH-1219 Chatelaine, Geneva  
Switzerland

Ms. Rossana Silva Repetto  
Executive Secretary  
[Rossana.Silva-Repetto@unep.org](mailto:Rossana.Silva-Repetto@unep.org)

---

## STAP Panel and Secretariat

### Panel

**Rosina Bierbaum**

Chairperson

[rbierbau@umich.edu](mailto:rbierbau@umich.edu)

+1 734 763 8675

**Ralph E. Sims**

Panel Member on Climate Change Mitigation

[R.E.Sims@massey.ac.nz](mailto:R.E.Sims@massey.ac.nz)

+64 21 166 4555

**Brian Child**

Panel Member on Biodiversity

[bchild@ufl.edu](mailto:bchild@ufl.edu)

+352 392 0494

**Ricardo Barra**

Panel Member on Chemicals & Waste

[ricbarra@udec.cl](mailto:ricbarra@udec.cl)

56-41-2204002

**Annette Cowie**

Panel Member on Land Degradation

[annette.cowie@une.edu.au](mailto:annette.cowie@une.edu.au)

+61 2 677 28080

**Ferenc Toth**

Panel Member of Adaptation

[ferenc3toth@gmail.com](mailto:ferenc3toth@gmail.com)

+43 2236 864501

**Michael Stocking**

Advisor to the STAP Chair

[m.stocking@uea.ac.uk](mailto:m.stocking@uea.ac.uk)

+44 1603 592 339

**Thomas E. Lovejoy**

Advisor to the STAP Chair

[tlovejoy@unfoundation.org](mailto:tlovejoy@unfoundation.org)

### Secretariat

**Christopher Whaley**

STAP Secretary

[christopher.whaley@unenvironment.org](mailto:christopher.whaley@unenvironment.org)

+1 202 974 1318

**Guadalupe Duron**

Programme Officer

[guadalupe.duron@unenvironment.org](mailto:guadalupe.duron@unenvironment.org)

+1 202 974 1313

**Robin Burgess**

Programme Assistant

[robin.burgess@unenvironment.org](mailto:robin.burgess@unenvironment.org)

+1 202 974 1311

**Sarah Lebel**

Climate Adaptation and Resilience Specialist

[sarah.lebel@unenvironment.org](mailto:sarah.lebel@unenvironment.org)

+1 202 621 5036

**Virginia Gorsevski**

Senior Programme Officer

[virginia.gorsevski@unenvironment.org](mailto:virginia.gorsevski@unenvironment.org)

+1 202 621 5020

**Sunday A. Leonard (PhD)**

Senior Programme Officer

[sunday.leonard@unenvironment.org](mailto:sunday.leonard@unenvironment.org)

+ 33 (0) 1 44 37 19 98



## GEF Agency Secretariats

**African Development Bank (AfDB) Registry**  
Headquarters  
01 BP 1387 Abidjan 01  
Côte d'Ivoire  
[Gef\\_afdb@afdb.org](mailto:Gef_afdb@afdb.org)

Mr. Mahamat Assouyouti  
GEF Coordinator  
[m.assouyouti@afdb.org](mailto:m.assouyouti@afdb.org)

*Copy to:*  
*Mr. Kurt Lonsway*  
*Division Manager, Environment and Climate*  
*Change*  
[k.lonsway@afdb.org](mailto:k.lonsway@afdb.org)

**Asian Development Bank (ADB) Registry**  
6 ADB Avenue  
Mandaluyong City 1550  
Metro Manila, Philippines  
[adbgef@adb.org](mailto:adbgef@adb.org)

Attn: Mr. Nessim Ahmad  
Deputy Director General, Sustainable Development  
and Climate Change Development and GEF Official  
Focal Point  
[njahmad@adb.org](mailto:njahmad@adb.org)

*Copy to:*  
*Mr. Bruce Dunn*  
*Principal Environment Specialist, Environment and*  
*Safeguards and ADB/GEF Coordinator*  
[bdunn@adb.org](mailto:bdunn@adb.org)  
+632 683 1922/ +632 683 1923

**European Bank for Reconstruction and  
Development (EBRD) Registry**  
One Exchange Square  
London EC2A 2JN, United Kingdom  
[ebrdgef@ebrd.com](mailto:ebrdgef@ebrd.com)

Attn: Mr. Alexis Franke  
Principal Manager | Deputy Pillar Head  
Donor Co-Financing  
[frankea@ebrd.com](mailto:frankea@ebrd.com)  
+44 20 7338-6004

**United Nations Food and Agriculture  
Organization (FAO) Registry**  
Viale Dell Terme di Caracalla  
00153 Rome, Italy  
[GEF-Coordination-Unit@fao.org](mailto:GEF-Coordination-Unit@fao.org)

Attn: Mr Alexander Jones  
Director, Climate and Environment Division (CBC)  
[CBC-Director@fao.org](mailto:CBC-Director@fao.org)  
+3906 570 54477

*Copy to:*  
*Mr. Jeffrey Griffin*  
*Senior Coordinator - FAO-GEF Unit*  
*Climate and Environment*  
*Division (CBC)*  
[Jeffrey.Griffin@fao.org](mailto:Jeffrey.Griffin@fao.org)  
[faogef@fao.org](mailto:faogef@fao.org)  
+3906 570 55680

## GEF Agency Secretariats cont'd

### **Inter-American Development Bank (IDB) Registry**

1300 New York Avenue, NW  
Washington, D.C. 20577, USA  
[idb-gef@iadb.org](mailto:idb-gef@iadb.org)

Mr. Juan Pablo Bonilla  
IDB-GEF Executive Coordinator  
[Idb-gef@iadb.org](mailto:Idb-gef@iadb.org)

### **International Bank for Reconstruction and Development (The World Bank) Registry**

1818 H Street, NW Washington,  
D.C. 20433, USA  
[wbgefoperations@worldbank.org](mailto:wbgefoperations@worldbank.org)

Ms. Emilia Battaglini GEF  
Executive Coordinator  
[ebattaglini@worldbank.org](mailto:ebattaglini@worldbank.org)  
+ 1 202 458 0378

*Copy to:*  
*Shaanti Kapila*  
[skapila@worldbank.org](mailto:skapila@worldbank.org)

### **International Fund for Agricultural Development (IFAD) Registry**

Via Paolo di Dono, 44  
00142 Rome, Italy  
[ECDmailbox@ifad.org](mailto:ECDmailbox@ifad.org)

Mr. Perin Saint-Ange  
Associate Vice President,  
Programme Management Department  
[p.saintange@ifad.org](mailto:p.saintange@ifad.org)  
+39 06 5459 2448

*Copy to:*  
*Ms. Margarita Astrálaga*  
*Director, Environment and Climate Division*  
[m.astralaga@ifad.org](mailto:m.astralaga@ifad.org)  
*Tel: +39 06 5459 2151*

*Ms. Sheila Mwanundu*  
[s.mwanundu@ifad.org](mailto:s.mwanundu@ifad.org)

*Ms. Aisha Nazario*  
[a.nazario@ifad.org](mailto:a.nazario@ifad.org)  
*Tel: +39 06 5459 2459*  
*Ms. Estibalitz Morras*  
[e.morras@ifad.org](mailto:e.morras@ifad.org)  
*Tel: +39 06 5459 2438*

### **United Nations Environment Programme (UN Environment) Registry**

United Nations Avenue  
Gigiri, PO Box 30552  
00100 Nairobi, Kenya  
[Unepgef@unep.org](mailto:Unepgef@unep.org)

Ms. Kelly West  
GEF Coordinator  
[Kelly.West@unep.org](mailto:Kelly.West@unep.org)  
+254 20 762 4147

Local Office:

900 17th Street, NW  
Suite 506, Washington, D.C. 20006

## GEF Agency Secretariats cont'd

### **United Nations Industrial Development Organization (UNIDO) Registry**

Vienna International Centre  
PO Box 300  
A-1400 Vienna, Austria  
[gef@unido.org](mailto:gef@unido.org)

Mr. Juergen Hierold  
GEF Coordinator  
[J.Hierold@unido.org](mailto:J.Hierold@unido.org)  
+43 1 26026 4565

*Copy to:*  
*Ms. Pamela Mikschofsky*  
[p.mikschofsky@unido.org](mailto:p.mikschofsky@unido.org)

### **United Nations Development Programme (UNDP) Registry**

304 East 45th Street  
New York, NY 10017, USA  
[undpgef@undp.org](mailto:undpgef@undp.org)

Attn: Ms. Adriana Dinu  
GEF Executive Coordinator  
[Adriana.dinu@undp.org](mailto:Adriana.dinu@undp.org)  
+1 212 906 5143

*Copy to:*  
*Nancy Bennet*  
[nancy.bennet@undp.org](mailto:nancy.bennet@undp.org)

## GEF Project Agency Secretariats

**Corporación Andina de Fomento (CAF)**  
380 Enrique Canaval Moreyra Ave., 13th Floor,  
San Isidro, Lima  
Lima 27, Peru  
[CAFGEF@caf.com](mailto:CAFGEF@caf.com)

Attn: René Gómez García Palao  
Senior Executive  
[rgomezgarcia@caf.com](mailto:rgomezgarcia@caf.com)  
+511-710-8530

*Copy to:*  
*Ms. Ligia Castro de Doens,*  
*Director*  
*Environment*  
[lcastro@caf.org](mailto:lcastro@caf.org)

**Conservation International (CI)**  
2011 Crystal Drive, Suite 500  
Arlington VA, 22202  
USA  
[CIGEF@conservation.org](mailto:CIGEF@conservation.org)

Attn: Mr. Miguel Morales  
Vice President/ Managing Director  
CI-GEF Project Agency  
[mamorales@conservation.org](mailto:mamorales@conservation.org)

*Copy to:*  
[osamaroo@conservation.org](mailto:osamaroo@conservation.org)

## GEF Project Agency Secretariats cont'd

**Development Bank of Southern Africa  
(DBSA)**

1258 Lever Road, Headway Hill  
Midrand, 1685  
South Africa  
[DBSAGEF@dbsa.org](mailto:DBSAGEF@dbsa.org)

Attn: Ms. Nomsa T. Zondi  
GEF Coordinator  
[nomsaz@dbsa.org](mailto:nomsaz@dbsa.org)  
+27 11 313 3491

**Foreign Economic Cooperation Office  
(FECO)**

Ministry of Environmental Protection  
ECO Building  
No.5 Houyingfang Hutong  
Xicheng District, Beijing 100035, China  
[FECOGEF@mepfeco.org.cn](mailto:FECOGEF@mepfeco.org.cn)

Attn: Mr. Xiao Xuezhi  
Deputy Director General  
[xiao.xuezhi@mepfeco.org.cn](mailto:xiao.xuezhi@mepfeco.org.cn)  
+ 86-10-82268807

*Copy to:*  
*Ms. Chen Haijun*  
*Director,*  
[chen.haijun@mepfeco.org.cn](mailto:chen.haijun@mepfeco.org.cn)  
+ 86-10-82268846

Ms. Yan Wei  
Senior Project Manager  
[yan.wei@mepfeco.org.cn](mailto:yan.wei@mepfeco.org.cn)  
+ 86-10-82268848

**International Union for Conservation of  
Nature (IUCN)**

Rue Mauverney, 28  
CH-1196 Gland,  
Switzerland  
[IUCNCEF@iucn.org](mailto:IUCNCEF@iucn.org)

Attn: Cyrie Sendashonga  
Global Director, Policy and Programme  
[Cyriaque.Sendashonga@iucn.org](mailto:Cyriaque.Sendashonga@iucn.org)  
+41 22 999 03 17

*Copy to:*  
*Mr. Jean-Yves Pirot,*  
*Head, GEF Coordination Unit*  
[jean-yves.pirot@iucn.org](mailto:jean-yves.pirot@iucn.org)  
+41 22 999 02 56

*Mr. Sébastien Delahaye*  
*Portfolio Manager*  
*GEF Coordination Unit*  
[Sebastien.Delahaye@iucn.org](mailto:Sebastien.Delahaye@iucn.org)  
+41 22 999 02 51

## GEF Project Agency Secretariats cont'd

---

**World Wildlife Fund, Inc. (WWF-US)**

1250 24th St, NW  
Washington, DC 20037-1193  
[WWFGEF@wwfus.org](mailto:WWFGEF@wwfus.org)

Attn: Dr. David S. McCauley  
Senior Vice President  
Policy and Government Affairs  
[david.mccauley@wwfus.org](mailto:david.mccauley@wwfus.org)  
+1-202-495-4159

*Copy to:*  
*Mr. Hervé Lefevre*  
*Senior Director, GEF Relations and*  
*GEF Coordinator*  
[Herve.Lefevre@wwfus.org](mailto:Herve.Lefevre@wwfus.org)  
+1-202-459-8533

**Fundo Brasileiro para a Biodiversidade (FUNBIO)**

Rua Voluntários da Pátria, 286 5º andar  
Botafogo, Rio de Janeiro, RJ  
22270-014  
[funbiogef@funbio.org.br](mailto:funbiogef@funbio.org.br)

Attn: Fabio Heuseler Ferreira leite  
GEF Coordinator  
[fabio.leite@funbio.org.br](mailto:fabio.leite@funbio.org.br)  
+ 55 21 2123-5326

*Copy to:*  
[agenciageg@funbio.org.br](mailto:agenciageg@funbio.org.br)

**Banque Ouest Africaine de Développement (BOAD)**

68 Avenue de La Liberation  
1172 - Lomé / Togo

Attn: Mr. Yacoubou Bio-Sawe  
Director of Environment and  
Finance Climate (DEFIC),  
GEF Coordinator  
[ybiosawe@boad.org](mailto:ybiosawe@boad.org)  
+(228)22.232.525.24

*Copy to:*  
*Ibrahim Traore*  
*Head of Finance Climate Division,*  
[itraore@boad.org](mailto:itraore@boad.org)  
+1(228)22.23.26.92

---

**DISTRIBUTION LIST WHEN SUBMITTING PROJECT PROPOSALS  
FOR GEF CEO APPROVAL/ENDORSEMENT**

As a rule, all GEF Agencies are expected to circulate their project proposals to the GEF Secretariat, GEF Agencies, and STAP and to the relevant Convention Secretariat.

**Standard Distribution List for all projects (PIF, PPG, FSP, MSP, and EA):**

gcoordination@thegef.org  
STAP.Secretariat@unenvironment.org  
christopher.whaley@unenvironment.org  
adbgef@adb.org  
bdunn@adb.org  
njahmad@adb.org  
gef\_afdb@afdb.org  
m.assouyouti@afdb.org  
k.lonsway@afdb.org  
ybiosawe@boad.org  
itraore@boad.org  
CAFGEF@caf.com  
rgomezgarcia@caf.com  
lcastro@caf.org  
CIGEF@conservation.org  
lspijkerman@conservation.org  
osamaroo@conservation.org  
DBSAGEF@dbsa.org  
nomsaz@dbsa.org  
ebridgef@ebrd.com  
simonetm@ebrd.com  
GEF-Coordination-Unit@fao.org  
faogef@fao.org  
CBC-Director@fao.org  
Jeffrey.Griffin@fao.org  
FECOGEF@mepfeco.org.cn  
xiao.xuezhi@mepfeco.org.cn  
chen.haijun@mepfeco.org.cn  
yan.wei@mepfeco.org.cn  
FUNBIOGEF@funbio.org.br  
agenciagef@funbio.org.br  
fabio.leite@funbio.org.br  
idb-gef@iadb.org  
jbonilla@iadb.org  
paolap@iadb.org  
ECDmailbox@ifad.org  
p.saintange@ifad.org  
m.astralaga@ifad.org  
l.laganda@ifad.org  
a.nazario@ifad.org  
IUCNGEF@iucn.org  
Cyriaque.Sendashonga@iucn.org  
Sebastien.Delahaye@iucn.org  
jean-yves.piro@iucn.org  
unepgef@unep.org  
Kelly.West@unep.org  
gef@unido.org  
j.hierold@unido.org  
p.mikschofsky@unido.org  
undpgef@undp.org  
adriana.dinu@undp.org  
nancy.bennet@undp.org  
wbgefoperations@worldbank.org  
WWFGEF@wwfus.org  
David.McCauley@wwfus.org  
Herve.Lefeuvre@wwfus.org

**To be included in the Standard Distribution List as appropriate:**

*For Biodiversity Projects:*  
secretariat@cbd.int

*For Climate Change Projects:*  
gefprojects@unfccc.int  
gefenabling.activities@unfccc.int

*For Land Degradation Projects:*  
secretariat@unccd.int  
athust@unccd.int  
*For Mercury Projects*  
jacob.duer@unep.org  
shelia.logan@unep.org

*For POPs Projects:*  
ta@brsmeas.org  
maria.cardenas@brsmeas.org  
frank.moser@brsmeas.org