



2023 GEF INTRODUCTION SEMINAR



gef GLOBAL ENVIRONMENT FACILITY
INVESTING IN OUR PLANET

2023 GEF
INTRODUCTION
SEMINAR

AGENDA

February 27

- GEF Overview
- GEF Partnership
- GEF Funding

February 28

- GEF Operations & Policies
- GEF-8 Programming

March 1

- OFP & Civil Society Support
- Small Grants Program

March 2

- Communication & Outreach
- Support for Climate Change Adaptation & Resilience



QR code: Agenda,
presentation &
reference materials

GEF-8 INTERACTIVE GUIDE (Download the file)

GLOBAL ENVIRONMENT FACILITY



GEF PARTNERSHIP

The GEF connects 185 governments with civil society, Indigenous Peoples, the private sector, and other environmental financiers.

[Explore](#)

GEF FUNDING

The GEF is the world's largest funder of biodiversity protection, nature restoration, pollution reduction, and climate change response.

[Explore](#)

STAR COUNTRY ALLOCATION

Check out the agenda. Scan QR code with your phone to view the agenda.

[Explore](#)

GEF POLICY FRAMEWORK

The GEF upholds international best practices and reviews policy compliance on a project level as well as Agencies institutional capacity.

[Explore](#)

GEF INTEGRATED PROGRAMS

GEF-8 11 Integrated Programs will deliver global environmental benefits across multiple focal areas.

[Explore](#)

GEF FOCAL AREAS

The GEF Focal Areas consist of Biodiversity, Climate Change Mitigation, Land Degradation, Chemicals & Waste, and International Waters.

[Explore](#)

GEF GOOD PRACTICE BRIEFS

The GEF Good Practice Briefs showcase successful project examples.

[Explore](#)

GEF FACTSHEETS

The GEF provides Country and Agency Factsheets as the portfolio management tools.

[Explore](#)

GEF PORTAL

The GEF Portal is the information technology platform to store and track project info and data, and allows technical review.

[Explore](#)

CORPORATE SCORECARD

The GEF Corporate Scorecard (published twice a year) is a report on the performance & progress towards the achievement of the GEF-8 targets.

[Explore](#)



A GLOBAL PARTNERSHIP

Largest environmental multi-donor trust fund in the world

Financial mechanism of five international environmental conventions



18 IMPLEMENTING AGENCIES

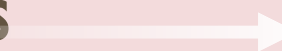


GOVERNANCE

GUIDANCE

CONVENTIONS

CBD
UNFCCC
UNCCD
Stockholm (POPs)
Minamata



COUNCIL

32 Constituencies



SECRETARIAT

INDEPENDENT
EVALUATION OFFICE

STAP

TRUSTEE

ACTION

185 member governments

COUNTRIES

Operational & Political Focal Points
Convention Focal Points
Civil Society
Indigenous peoples
Private Sector

18 AGENCIES

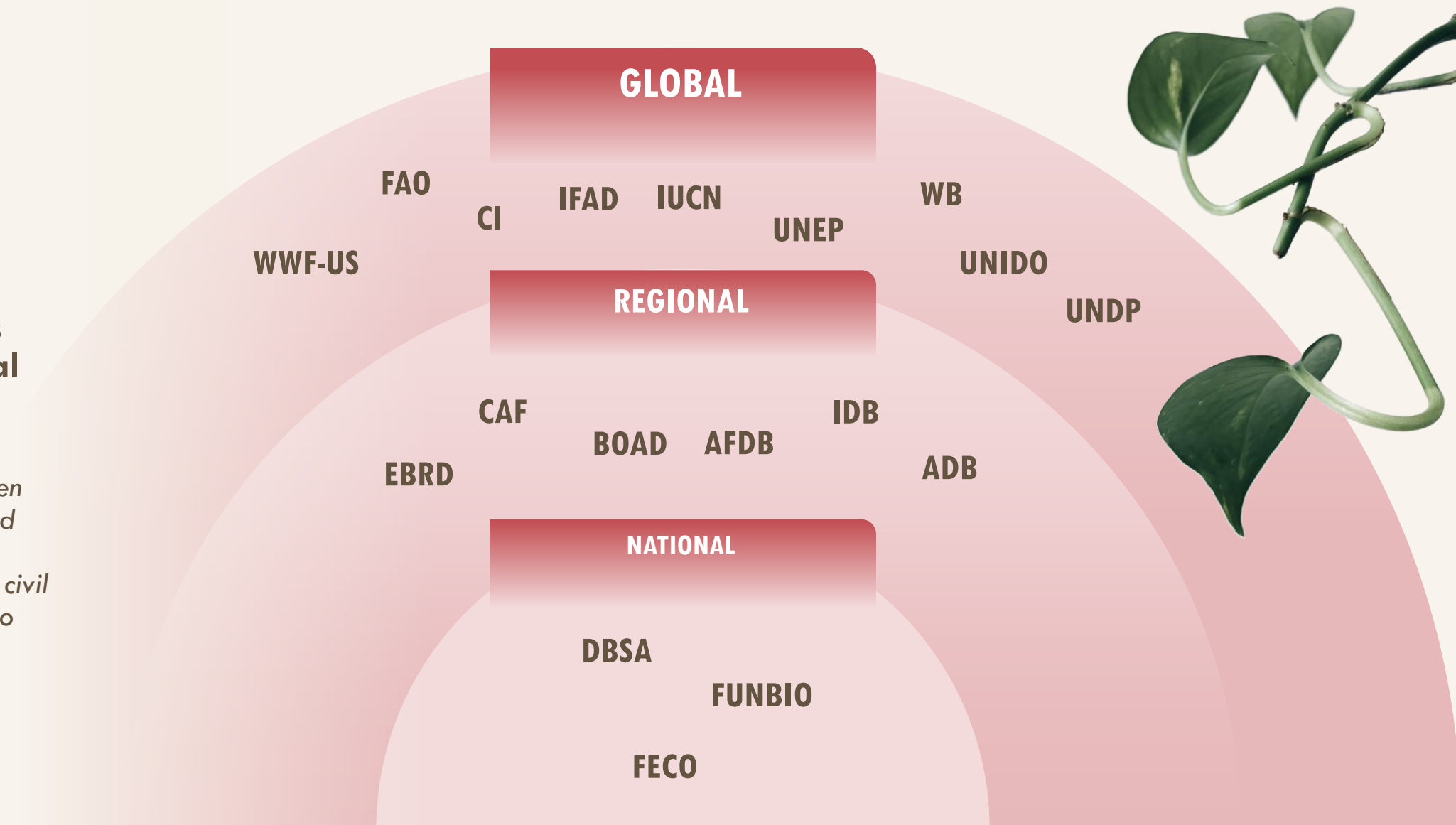
EXECUTING ENTITIES



18 GEF AGENCIES

The GEF Agencies are the operational arm of the GEF.

They work closely with project proponents - often government agencies and other national organizations, including civil society organizations - to design, develop and implement GEF-funded projects and programs.



GEF-8 Resources

4-year

replenishment cycle
from July 1, 2022
to June 30, 2026

\$5.33 billion

pledged by
39 donor nations

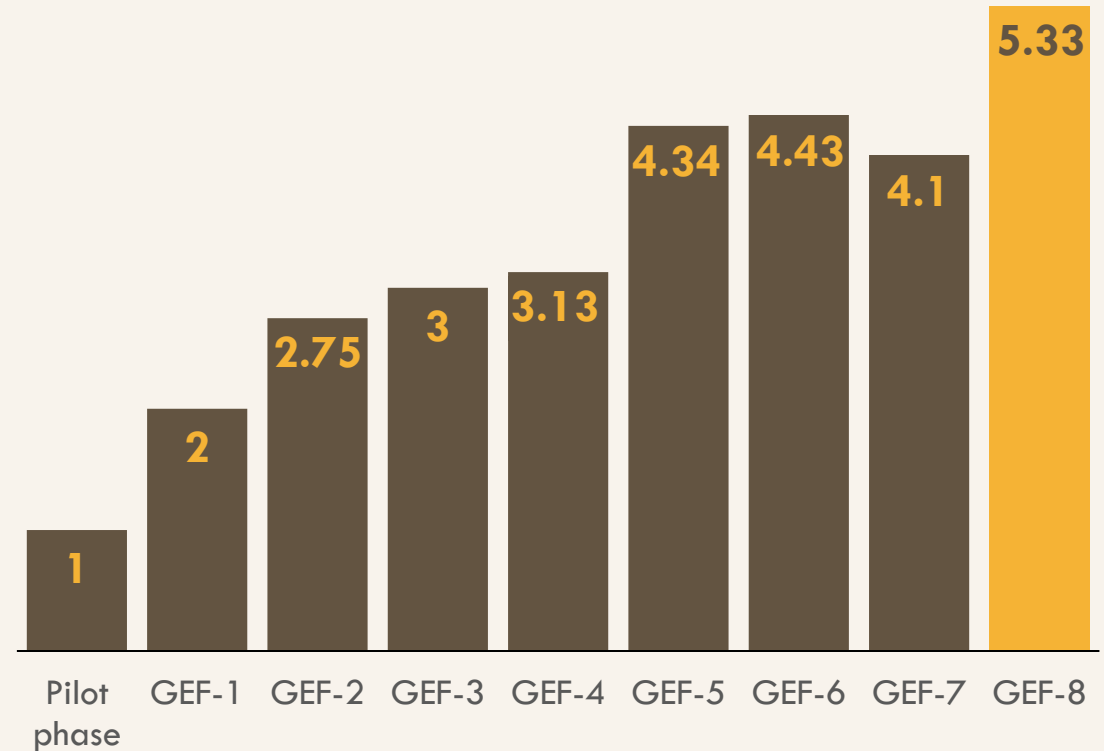
Country 'STAR'

allocation

GEF-8 strategy responds to conventions and takes **an integrated approach to systems transformation**

GEF Replenishment Cycles

(billion USD)



AGENDA

GEF PARTNERSHIP

- Scientific and Technical Advisory Panel (STAP)
- GEF Independent Evaluation Office (IEO)
- Questions & Answers (please type your question in chat)
- Coffee break & Say hello
- Adaptation Fund (AF)
- Relations with Conventions
- GEF Trustee
- Questions & Answers (please type your question in chat)



QR code: Agenda,
presentation &
reference materials

Scientific and Technical Advisory Panel (STAP) to the Global Environment Facility (GEF)

GEF Introduction Seminar
27 February 2023

Dr. Blake Ratner

STAP Panel Member
for International Waters

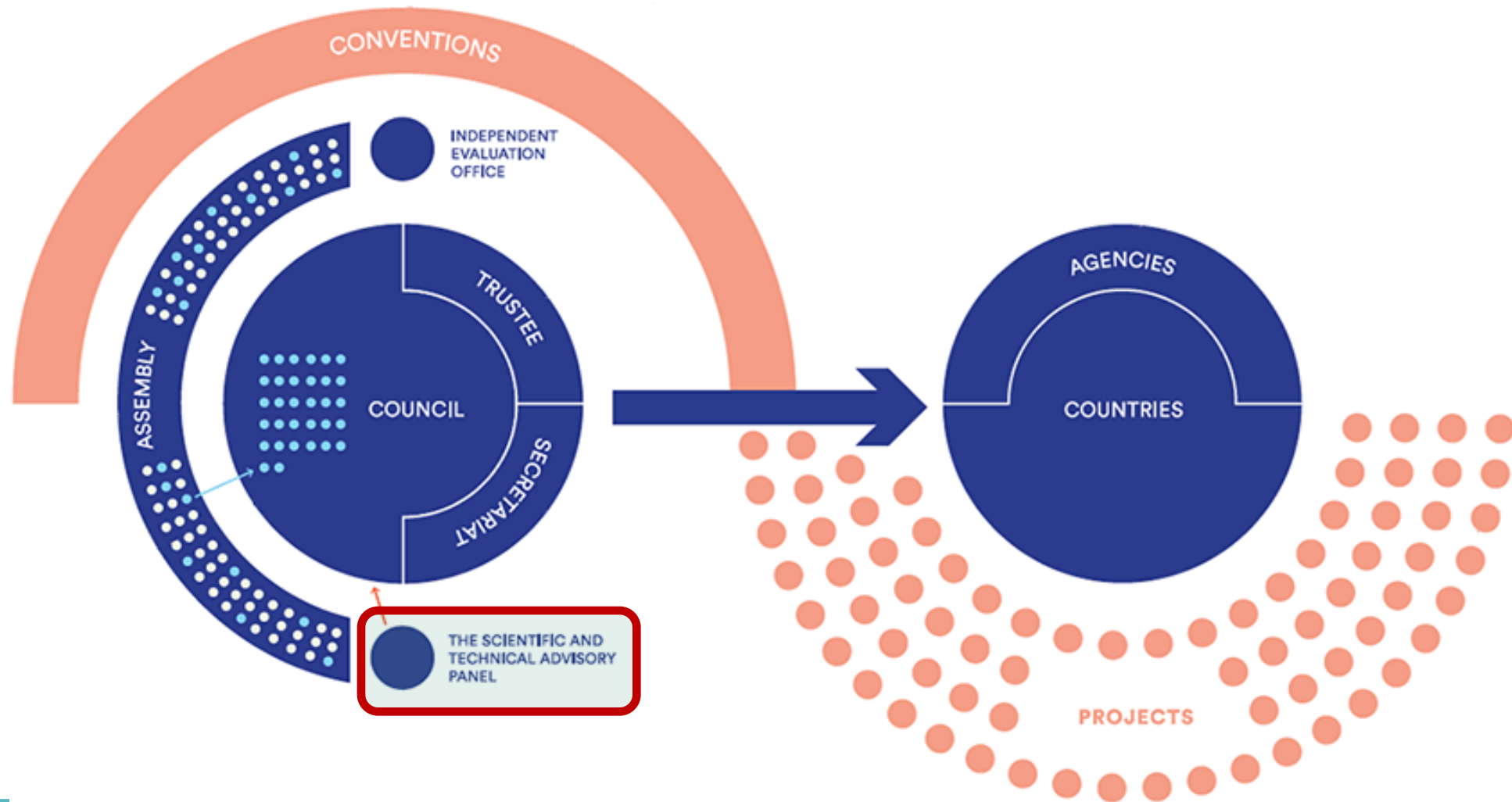


What is STAP ?

STAP provides independent scientific and technical advice to the GEF Council on GEF projects, policies, and programs.



STAP in the GEF Partnership



Scientific Technical and Advisory Panel



Mark Stafford Smith
Advisor to Chair



Rosina Bierbaum
Chair



Chris Whaley
Advisor to Chair



Ngonidzashe Chirinda
Climate Change Mitigation



Edward Carr
Climate Change Adaptation



Miriam Diamond
Chemicals and Waste



John Donaldson
Biodiversity



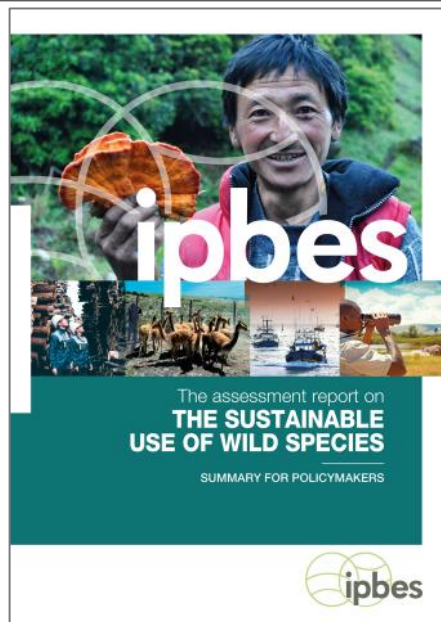
Graciela Metternicht
Land Degradation



Blake Ratner
International Waters

STAP has two main roles in the GEF Partnership

- 1 Provide advice**
 - State of science
 - Horizon scanning
 - GEF strategy and programming priorities
 - Technical guidance



 The **Land Gap** Report



- 2 Screen projects & programs**
 - GEF full-sized projects
 - Integrated programs



STAP's role in screening projects

Screening proposals for Council to:

- Apply evidence-based principles for good project **design**
- Assess quality of **science** and technology behind proposals
- Help the GEF to **validate** aspirations for innovation and transformation where appropriate

➤ Using STAP's formal screening template

<https://www.stapgef.org/resources/advisory-documents/stap-guidelines-screening-gef-projects>



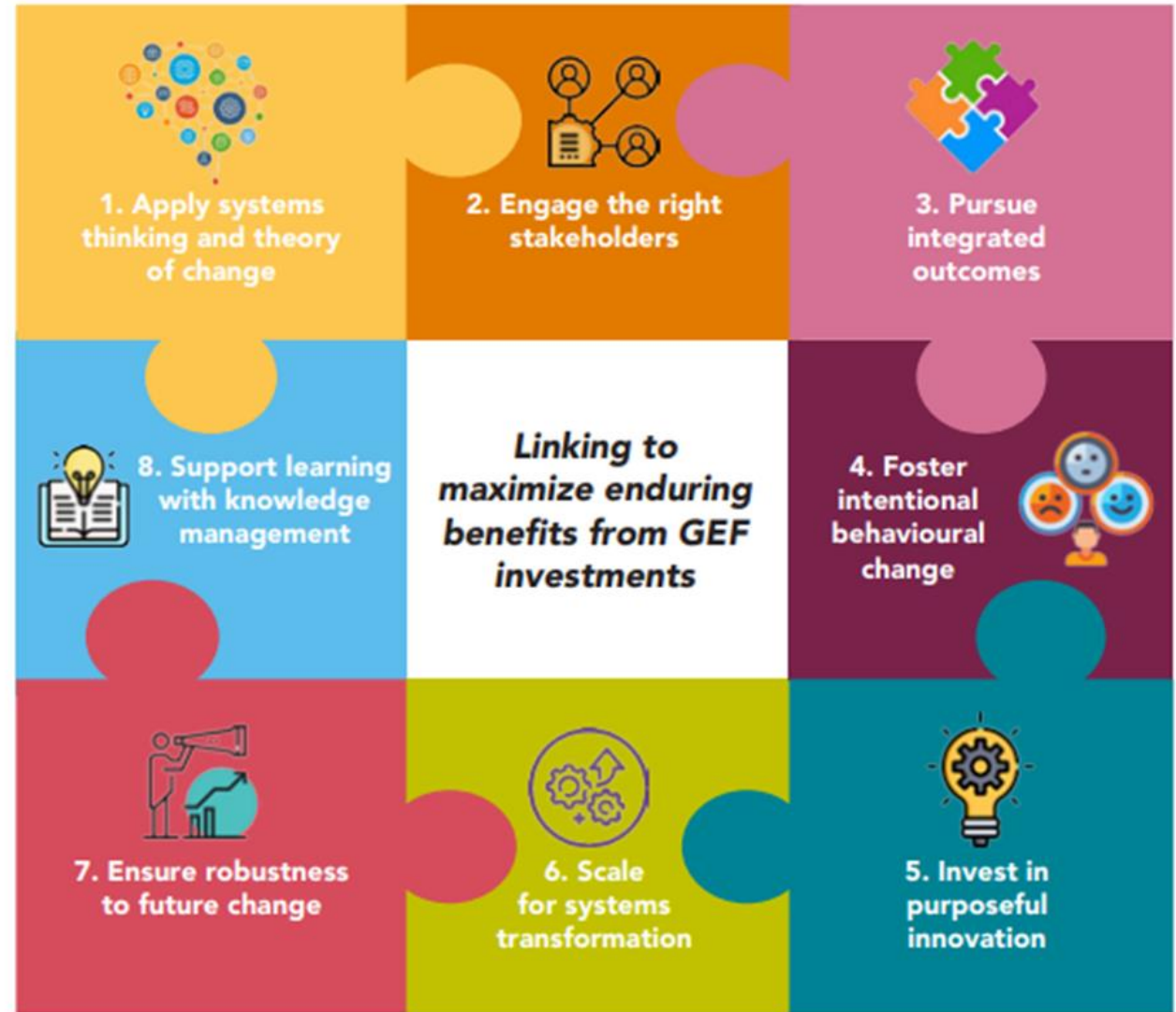
Principe Scops Owl (*Otus bikegila*)
São Tomé and Príncipe
Image credit: Philippe Verbelen

Enabling Elements of Good Project Design: A synthesis of STAP guidance for GEF project investment

A STAP Guidance Document
November 2021



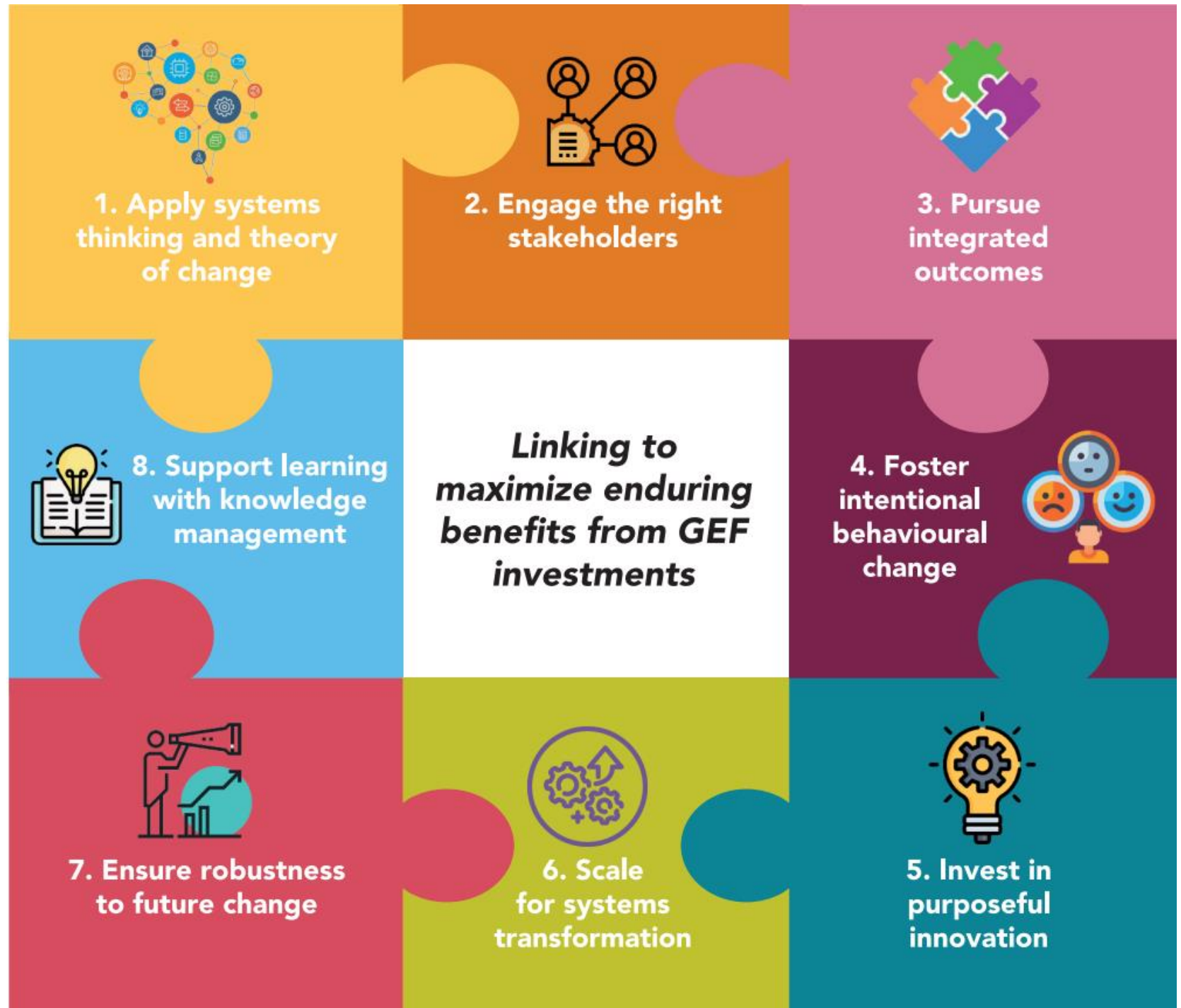
STAP SCIENTIFIC AND TECHNICAL
ADVISORY PANEL
An independent group of scientists that advises
the Global Environment Facility



Eight enabling elements

Applied consistently but lightly at the PIF stage, in the *Project Rationale* and *Project Description*

Then developed more fully by CEO endorsement (and in implementation)



Apply systems thinking approaches and theory of change

☞ *STAP Theory of Change Primer*

1. Apply systems thinking and theory of change



Engage the right stakeholders (in the right way)

☞ *STAP Multi-Stakeholder Dialogue*

2. Engage the right stakeholders



Pursue integrated outcomes (and relevant co-benefits)

☞ *STAP Co-benefits*

3. Pursue integrated outcomes



Linking to maximize enduring benefits from GEF investments

8. Support learning with knowledge management



4. Foster intentional behavioural change



Be explicit about behavioural change (and changes to institutions)

☞ *STAP Behavioural Change*

Support learning with knowledge management
(test the ToC)

☞ **STAP Knowledge Management and Learning**



8. Support learning with knowledge management

Linking to maximize enduring benefits from GEF investments

4. Foster intentional behavioural change



7. Ensure robustness to future change

Ensure robustness to future change
(including climate change)

☞ **STAP Narratives for Durability; Policy coherence**



6. Scale for systems transformation

Scale for systems transformation
(with clear contributions)

☞ **STAP Achieving Transformation**

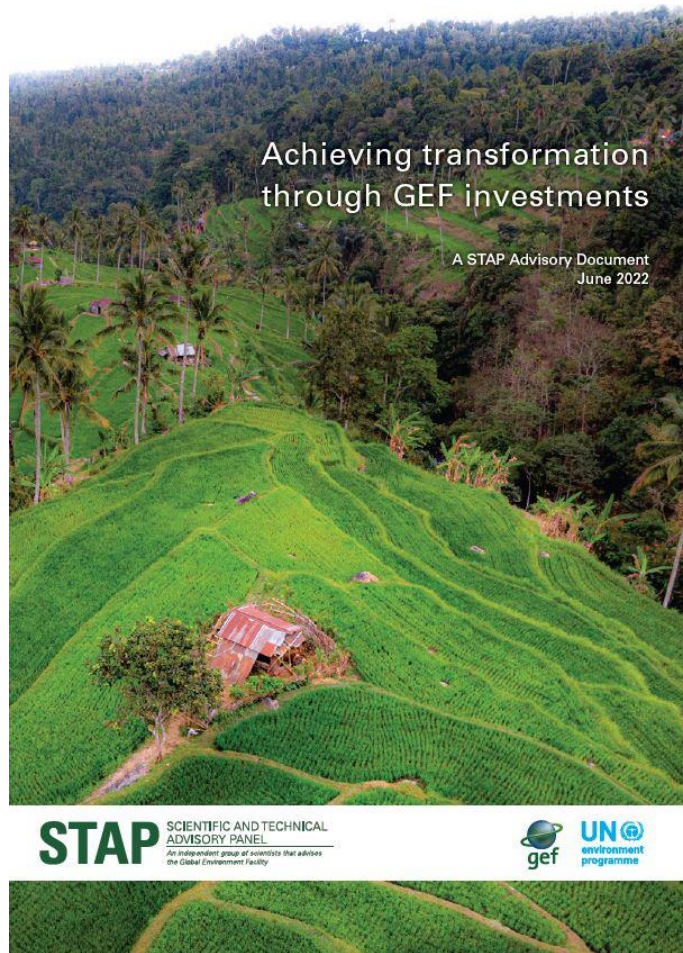


5. Invest in purposeful innovation

Invest in innovation
(taking calibrated risks)

☞ **STAP Risk Appetite; Innovation**

Achieving transformation through GEF investments



Framing policy coherence for the GEF



Policy coherence matters to the GEF because it:

- creates **synergies**
- helps manage **trade-offs**
- avoids damaging behaviors
- ensures global environmental benefits are not undermined due to misaligned policies

A decision tree for climate adaptation rationale



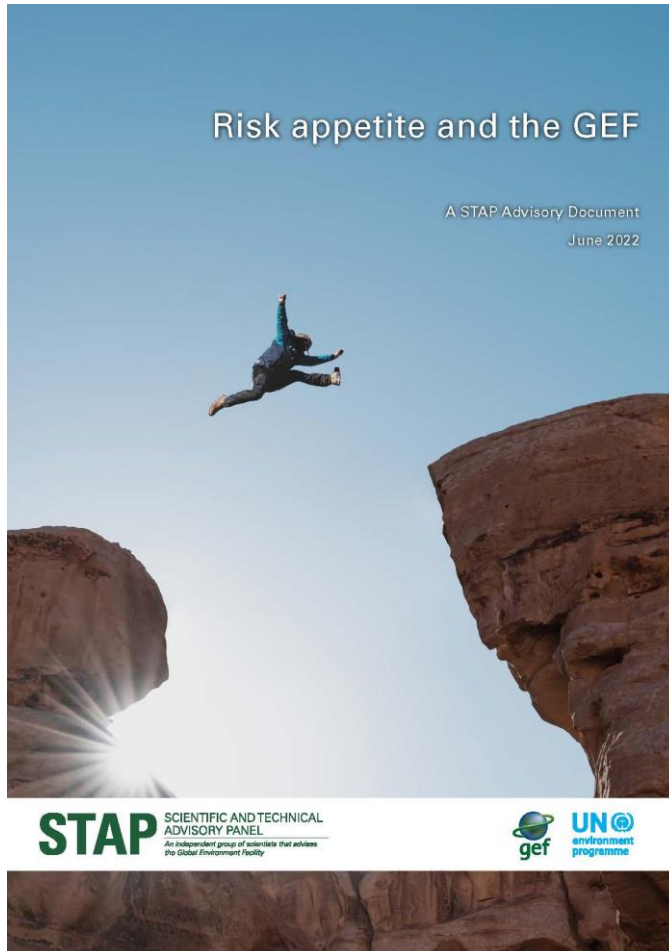
- The IPCC noted the **fragmented** nature of adaptation investments
- To deal with this, clear adaptation rationales are needed, based on three categories:
 - **exposure**
 - **sensitivity**
 - **adaptive capacity**

The GEF and the Blue Economy

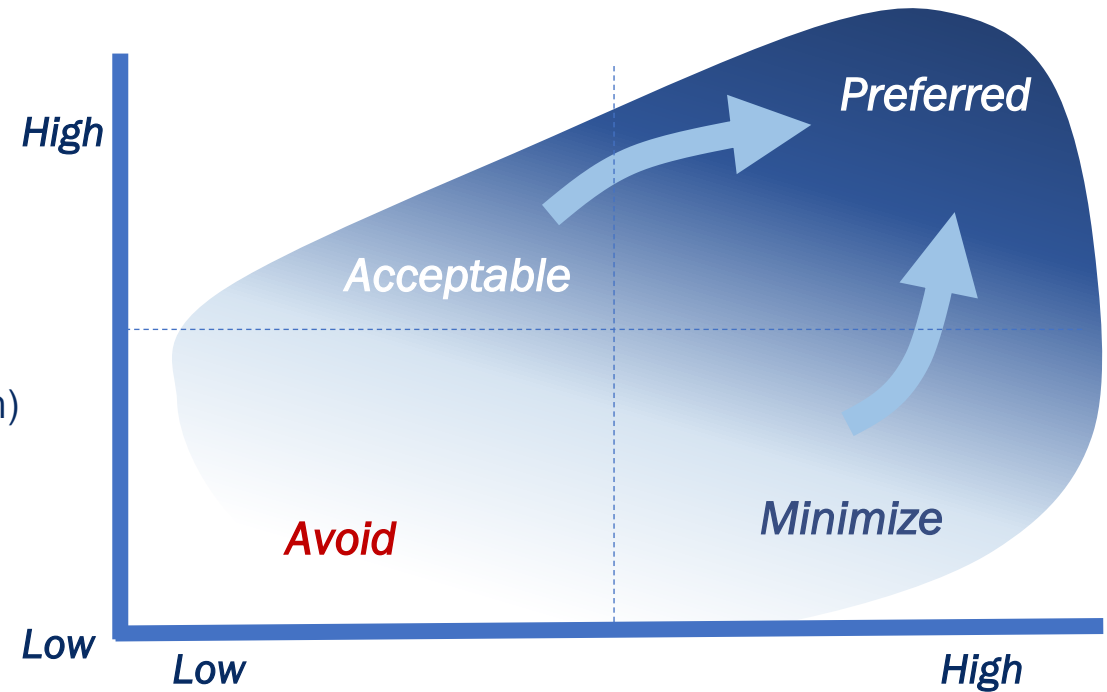


- GEF is the **largest** funding mechanism for multi-country collaboration on water and oceans
- Opportunity to be **integrative** across a range of environmental dimensions relevant to the blue economy agenda
- Key niche is helping **translate** Blue Economy and marine conservation commitments into practical policy and implementation

Risk appetite and the GEF



Impact
(related to degree of scaling and system transformation)



Innovation
(associated with risk of failure but also opportunity to learn)

STAP Assembly report: transformation needed at 4 levels



- **GEF projects** are integrated and pathways to scaling for transformation are identified
- **Focal areas and IPs** support well-targeted innovation and system transformation
- **Portfolio-wide strategy** promotes adaptive and integrated approaches to transformation and for KM&L
- **Leverage partnerships** to engage, support, and influence alliances to transform systems

Recent STAP Advice

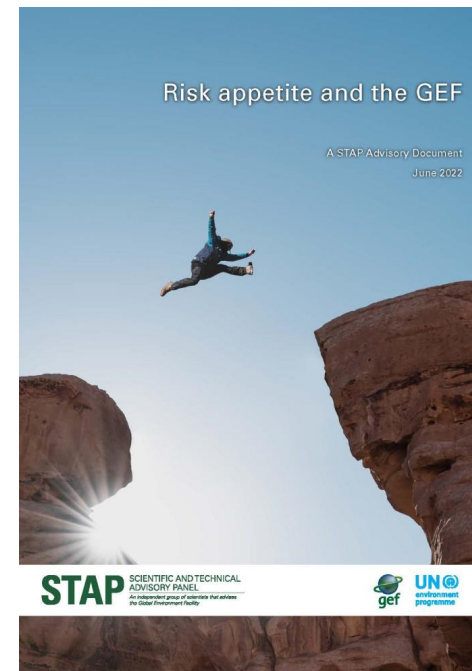
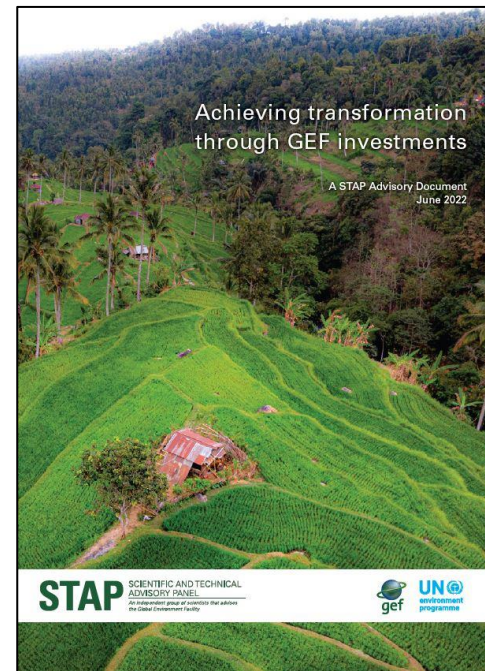
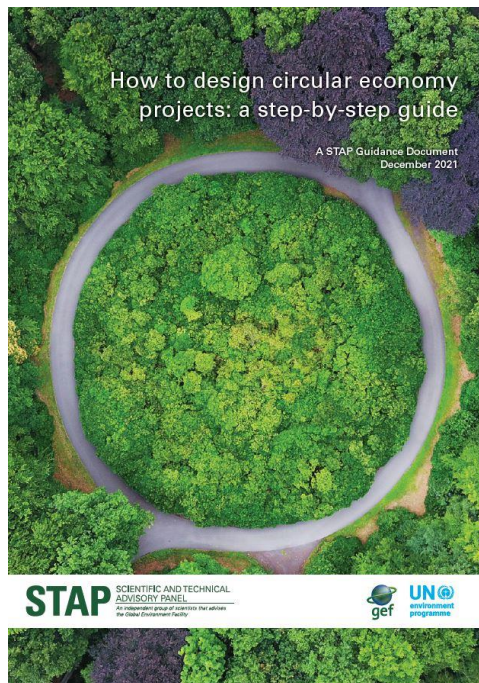
- Looking forward to the 7th GEF Assembly in 2023
- Risk appetite and the GEF
- Climate change adaptation (decision tree for adaptation rationale and a typology of benefits)
- Achieving transformation through GEF investments
- Nature-based Solutions and the GEF
- Knowledge management and learning
- Using simple narratives to ensure durability of GEF investments
- Refining the tracking of co-benefits in future GEF investments
- Framing policy coherence for the GEF
- GEF and the Blue Economy



Thank you

Please visit our website for full range of guidance and info

www.stapgef.org





EVALUATION IN THE GEF

February 2023



Overview

1 Monitoring versus Evaluation

2 Evaluation in the GEF

3 Evaluation Policy and Minimum Requirements

4 IEO data and evaluations

5 Priorities

M vs E



Monitoring

Is our activity on track?

Monitoring uses systematic collection of data to keep activities on track.

Forms of monitoring:

Monitoring of **environmental conditions and stressors**

Monitoring of **progress toward project/program outcomes**

Monitoring of **project/program performance**

Evaluation

- Are we doing the right thing?
- Are we doing things right and efficiently?
- Are there better ways of doing it?

Evaluation is a *systematic* assessment of an activity (program, strategy, etc.) that assesses *relevance, coherence, effectiveness, efficiency, results and sustainability.*

Project/Program-Level Evaluations based on **WHEN**
Mid-term, Terminal

Corporate-level Evaluations based on **WHAT** and **WHAT FOR**
Impact, thematic, performance, country, corporate, comprehensive

Monitoring <-> Evaluation

Monitoring

- Continuous or periodic
- Objectives taken as given
- Tracks indicators
- Focus on intended results
- Multiple sources of data
- Does not address causal questions
- Internal management

Evaluation

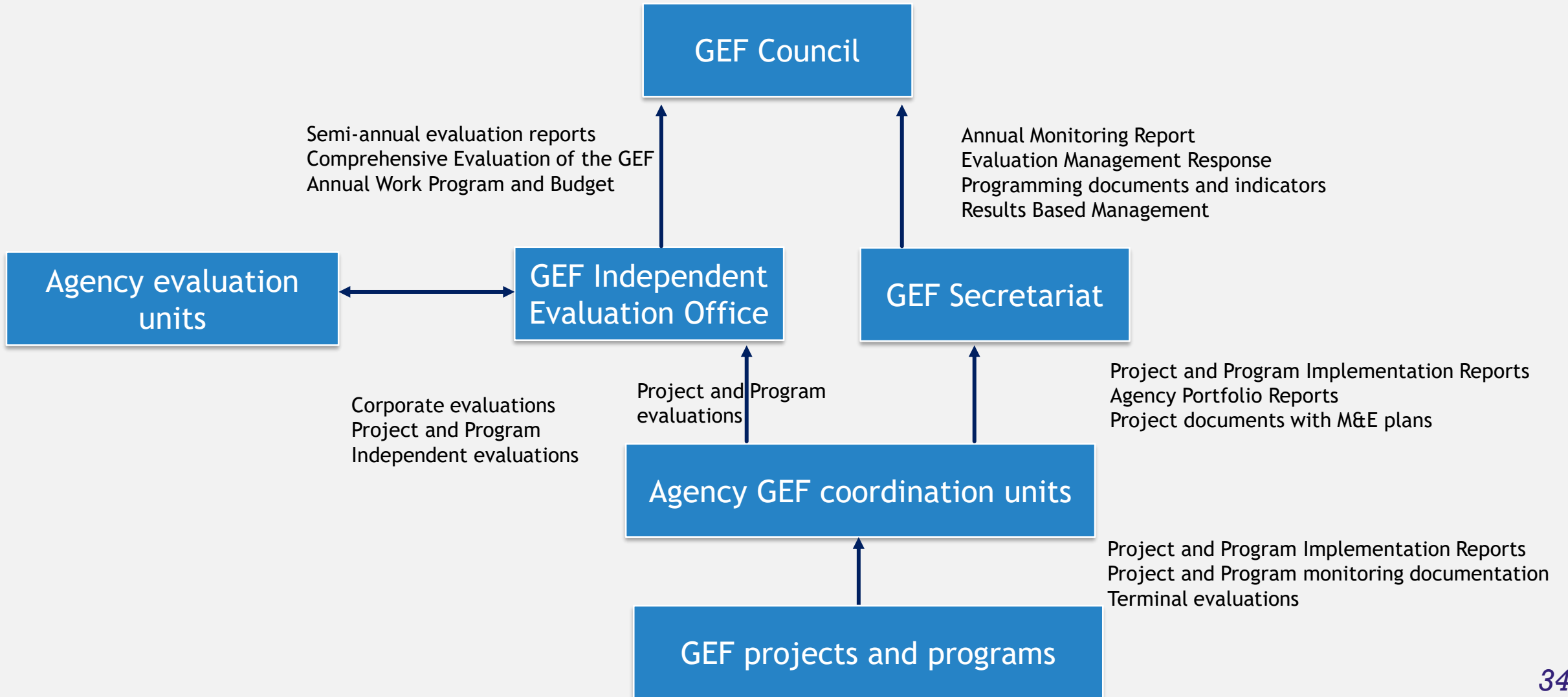
- Project closure, opportunistic
- Objectives Based
- Relevance, Coherence, Efficiency, Effectiveness, Sustainability, Impact
- Intended and Unintended results
- Quantitative and qualitative methods
- Multiple sources of data
- Causal questions
- External or internal



Independent
Evaluation Office
GLOBAL ENVIRONMENT FACILITY


Evaluation in the GEF

Evaluation in the GEF



GEF Independent Evaluation Office (IEO)

Brief history



1996 — Initially established as an M&E unit within the GEF Secretariat

2003 — The M&E unit was made autonomous of the GEF Secretariat

2005 — The unit was renamed as GEF Evaluation Office

2013 — The office was renamed as GEF Independent Evaluation Office

GEF Independent Evaluation Office (IEO)

Mission

Enhance global environmental benefits through excellence, independence, and partnership in monitoring and evaluation.

Principles

Impartiality
Professionalism
Transparency

Functions

Independent evaluation
Setting of minimum standards
(normative)
Quality control (oversight)
Sharing evaluative knowledge

Evaluation Policy



The GEF Evaluation Policy

- ✓ Defines the concepts, roles, types, use and follow up of evaluation within the GEF
- ✓ Defines the institutional framework and responsibilities
- ✓ Indicates the minimum requirements covering:
 - design of evaluation plans
 - application of evaluation plans
 - project and program evaluations
 - engagement of operational focal points in evaluations

Minimum Requirement 1

Design of M&E Plans

Concrete and fully budgeted M&E plan by CEO endorsement for FSP/
CEO approval for MSP/ by PFD approval for programs.

M&E Plan should include:

- SMART indicators
- Program or project baseline data
- Implementation reports, midterm reviews, terminal evaluations
- Organizational set up and budget for M&E

Minimum Requirement 2

Implementation of M&E Plans

Project/program monitoring and supervision will include execution of M&E plan:

- Use of SMART indicators for process and implementation
- Use of SMART indicators for results
- Baseline is fully established, data are compiled to review progress, evaluations are undertaken as planned
- Organizational set up for M&E is operational, its budget is spent as planned

Minimum Requirement 3

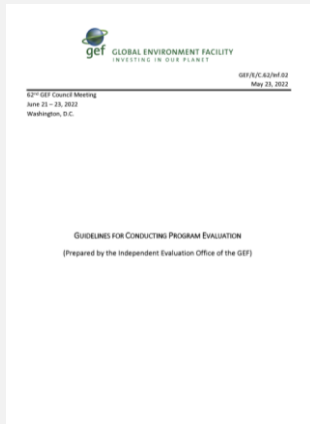
Project/Program Evaluations:

All FSP/MSP projects and all programs will be evaluated at the end of implementation

Evaluations should:

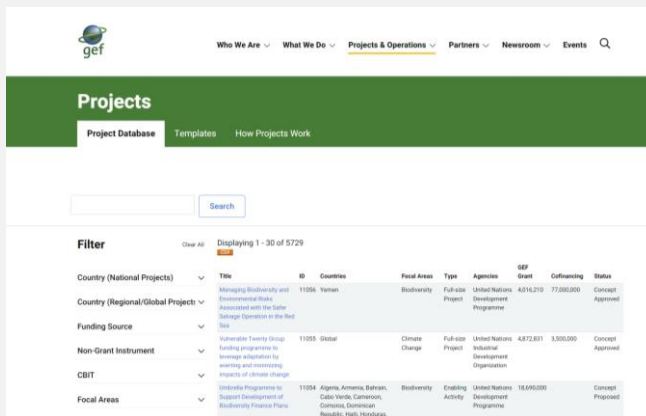
- Be independent of project/program management or reviewed by GEF Agency evaluation unit
- Apply international evaluation standards and minimum requirements of this Policy
- Assess, as a minimum, outputs and outcomes, likelihood of sustainability, compliance with Minimum Requirements 1 & 2
- Contain basic project/program data; lessons for broader applicability
- Should be sent to GEF IEO within 12 months of completion of project/program

Terminal Evaluation



Terminal Evaluation Guidelines can be accessed at:
<https://www.gef.io/evaluations/gef-guidelines-te-fsp-2017>

Guidelines for Program Evaluation:
<https://www.gef.io/sites/default/files/documents/council-documents/c-62-e-inf-02.pdf>



Terminal Evaluations can be accessed at:
<https://www.thegef.org/projects-operations/database>

Minimum Requirement 4

Engagement of operational focal points

- ❑ M&E plans will specify how OFPs will be engaged
- ❑ GEF Agencies will inform OFPs on M&E activities
- ❑ OFPs will be informed on midterm reviews, terminal evaluations, receiving drafts for comments and final reports
- ❑ OFPs will be invited to contribute to the management response (where applicable)
- ❑ GEF Agencies will keep track application of this requirement in their GEF-financed projects and programs

Follow up to Evaluations

A management response is required for all evaluations and performance reports presented to the GEF Council by the GEF IEO. It is coordinated by GEF SEC with inputs from other GEF stakeholders.

GEF Council takes into consideration the evaluation findings and the recommendations as well as the management response and action plans in the decision.

GEF IEO reports on the progress of actions towards implementation of the decision annually (Management Action Record)

IEO DATA and EVALUATIONS



Data by Country and other resources on the IEO website

www.gefio.org/data-ratings



Disclaimer: Country borders or names do not necessarily reflect the GEF IEO official position. This map is for illustrative purposes and does not imply the expression of any opinion on the part of the GEF IEO, concerning the legal status of any country or territory or concerning the delimitation of frontiers or boundaries.

80% Satisfactory
Outcome Rating
(n= 292)

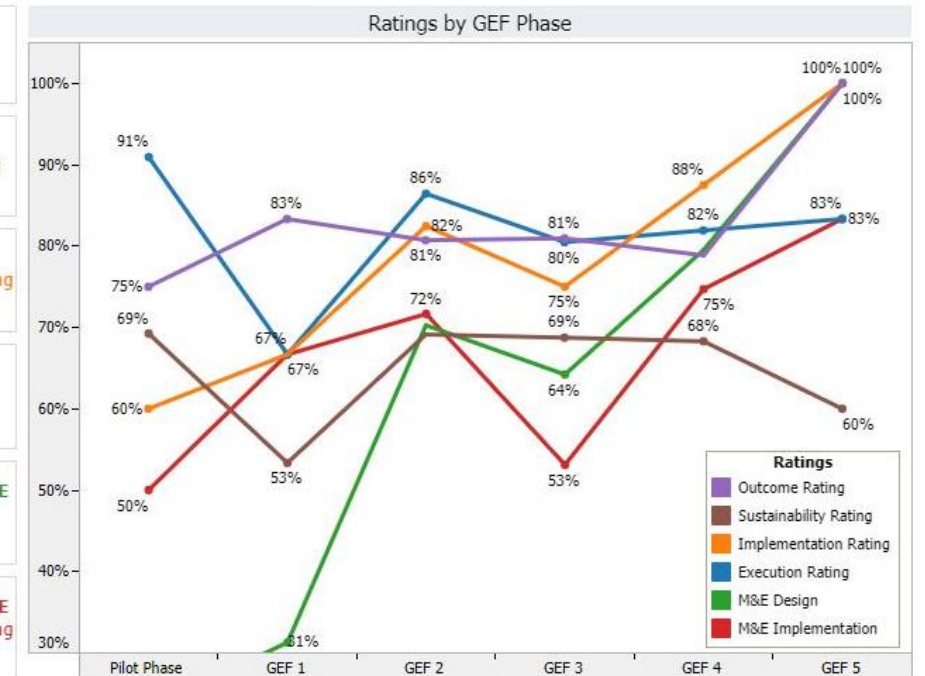
68% Satisfactory
Sustainability Rating
(n= 276)

80% Satisfactory
Implementation Rating
(n= 241)

82% Satisfactory
Execution Rating
(n= 250)

67% Satisfactory **M&E
Design Rating**
(n= 272)

66% Satisfactory **M&E
Implementation Rating**
(n= 172)

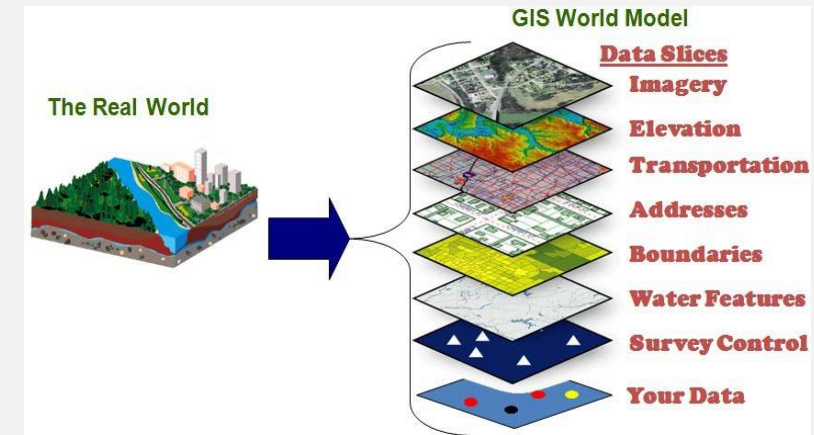


Evaluations undertaken by IEO

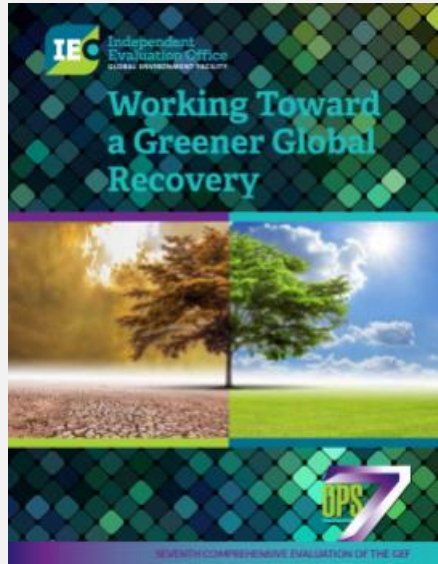
- ✓ Impact, thematic, performance, country/country cluster, formative, process
- ✓ Comprehensive Evaluation of the GEF every 4 years

Methods

- ✓ Qualitative through portfolio reviews, case studies
- ✓ Quantitative including GIS, Remote Sensing, Big Data Analytics



Recent evaluations



Evaluation of GEF Support in Fragile and Conflict-Affected Situations (2020)



November 2020

IEC Independent Evaluation Office
GLOBAL ENVIRONMENT FACILITY

GEF Annual Performance Report 2021



January 2022

IEC Independent Evaluation Office
GLOBAL ENVIRONMENT FACILITY

GEF Support to Sustainable Forest Management



Volume 1: Main Report

November 2022

IEC Independent Evaluation Office
GLOBAL ENVIRONMENT FACILITY

Resilience, Climate Change Adaptation, and Climate Risks in the GEF Trust Fund



November 2022

IEC Independent Evaluation Office
GLOBAL ENVIRONMENT FACILITY

GEF Interventions in the Artisanal and Small-Scale Gold Mining Sector



January 2022

IEC Independent Evaluation Office
GLOBAL ENVIRONMENT FACILITY

GEF Integrated Approach to Address Drivers of Environmental Degradation



Volume 1: Main Report

August 2022

IEC Independent Evaluation Office
GLOBAL ENVIRONMENT FACILITY

GEF Country Support Program



February 2023

IEC Independent Evaluation Office
GLOBAL ENVIRONMENT FACILITY

GEF Support to Innovation: Findings and Lessons



Last Updated on May 2021

Proposed Work Program for GEF-8 period

FY23

- COVID-19
- Water Security
- Annual Performance Report 2023
- Report GEF IEO MAR
- Community-focused approaches
- Climate warning and information systems
- Climate Change Mitigation
- Behavioral Change
- Evaluation of policy influence interventions
- LDCF/SCCF: Annual Evaluation Report 2023
- Updated Guidance Document: Evaluation in the LDCF/SCCF

FY24

- Socio Economic Co Benefits
- SCCE on Drylands
- Sustainable Cities program
- Combating Illegal Wildlife Trade
- Integrated interventions in SIDS
- LDCF/SCCF: 2024 LDCF program evaluation
- Learning from Challenges
- Project efficiency in GEF interventions
- The Capacity-building Initiative for Transparency (CBIT)
- GEF Support to Nature Based Solutions (NbS)
- LDCF/SCCF: Annual Evaluation Report 2024

FY25

- Country Engagement Strategy
- Small Grants Program
- Food Security & Commodities IAP
- Annual Performance Report 2024
- Implementation of the Private sector Strategy
- Focal area assessment
- Formative Evaluation of the GEF-7 and GEF-8 Impact Programs
- Governance of the GEF
- Eighth Comprehensive Evaluation of the GEF (2022-2025)
- Final report to council (FY 2026)
- GEF Results Based Management
- Implementation of GEF Policies
- Knowledge Management in the GEF
- LDCF/SCCF AER2025

Knowledge Management



Books Published

- ✓ *Transformational Change for People and the Planet* (GEF IEO Director and Deputy Director. Springer)
- ✓ *Environmental Evaluation and Global Development Institutions: A Case Study of the Global Environment Facility* (Geeta Batra, Juha Uitto, Osvaldo Feinstein. Taylor & Francis Group)
- ✓ *Dissemination of OPS7-Exec summaries in English, French, Spanish.*



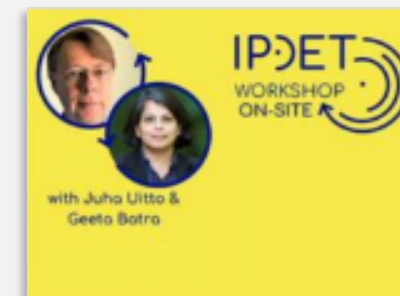
Conferences, events and networks

- ✓ International Conference on Evaluating Environment and Development (October 18-19, 2023)
- ✓ Expanded Constituency Workshops
- ✓ Environmental Dimensions of Sustainable Development (United Nations Evaluation Group)



Training

- ✓ Training module on evaluation at the nexus of the environment and development for the International Program for Development Evaluation Training
- ✓ Online training on environmental evaluation



Thank you!

gefieo.org

@GEF_IEO





Questions?



gef

GLOBAL ENVIRONMENT FACILITY
INVESTING IN OUR PLANET



Coffee break *Say Hello*



gef

GLOBAL ENVIRONMENT FACILITY
INVESTING IN OUR PLANET



ADAPTATION FUND

ADAPTATION FUND - OVERVIEW

GEF INTRODUCTION SEMINAR, 27 FEBRUARY 2023

Ishak Mohammed and Bianka Kretschmer – AF Countries and Partnerships Unit

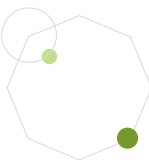
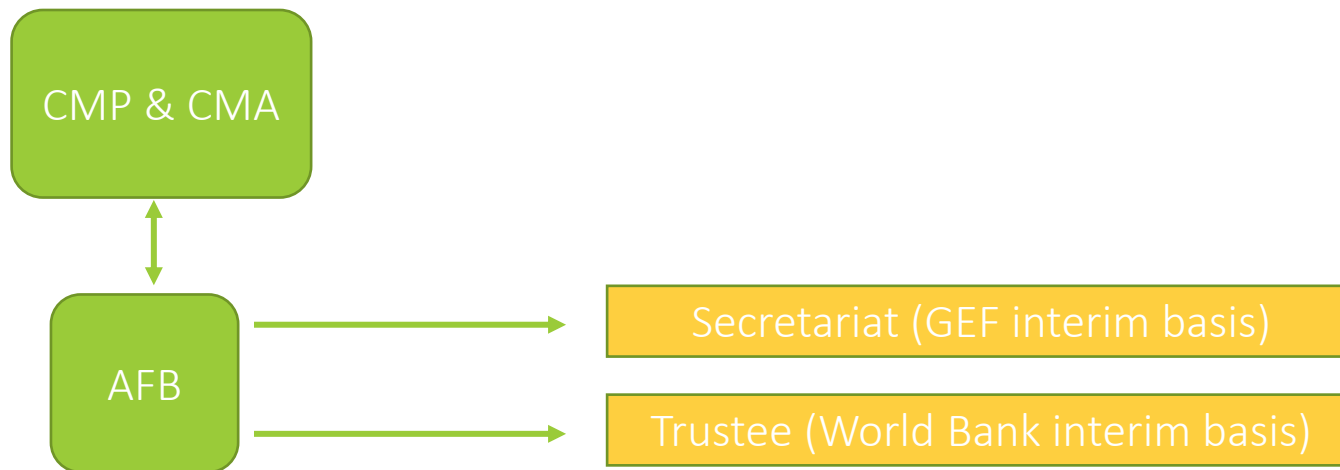
Introduction

- ❑ Set up under the Kyoto Protocol of the UNFCCC (**Fully operational in 2010**)
- ❑ **Mandate:** To finance concrete adaptation projects and programs in developing country Parties that are particularly vulnerable to the adverse effects of climate change
- ❑ “The Adaptation Fund shall serve the Paris Agreement under the CMA with respect to all Paris Agreement matters, **effective 1 January 2019.**” – **Decisions 13/CMA.1 and 1/CMP.14**
- ❑ The Adaptation Fund is one of several international funds in the multilateral climate finance landscape.



Governance & Institutional arrangements

- ❑ **Governance** → Adaptation Fund Board (AFB):
 - Composed of 16 members and 16 alternate members, and meets at least twice a year in Bonn, Germany.
 - Has legal capacity in Germany
- ❑ **Institutional arrangements:** The AFB reports to the CMP & CMA and is serviced by AFB Secretariat and the World Bank as a Trustee (on an interim basis). Open-ended arrangement since CMP 15 (2019)
- ❑ Functionally independent secretariat: Capacity of 23 Staff & Consultants
- ❑ Memorandum of Understanding with the GEF – host to the AFB Secretariat



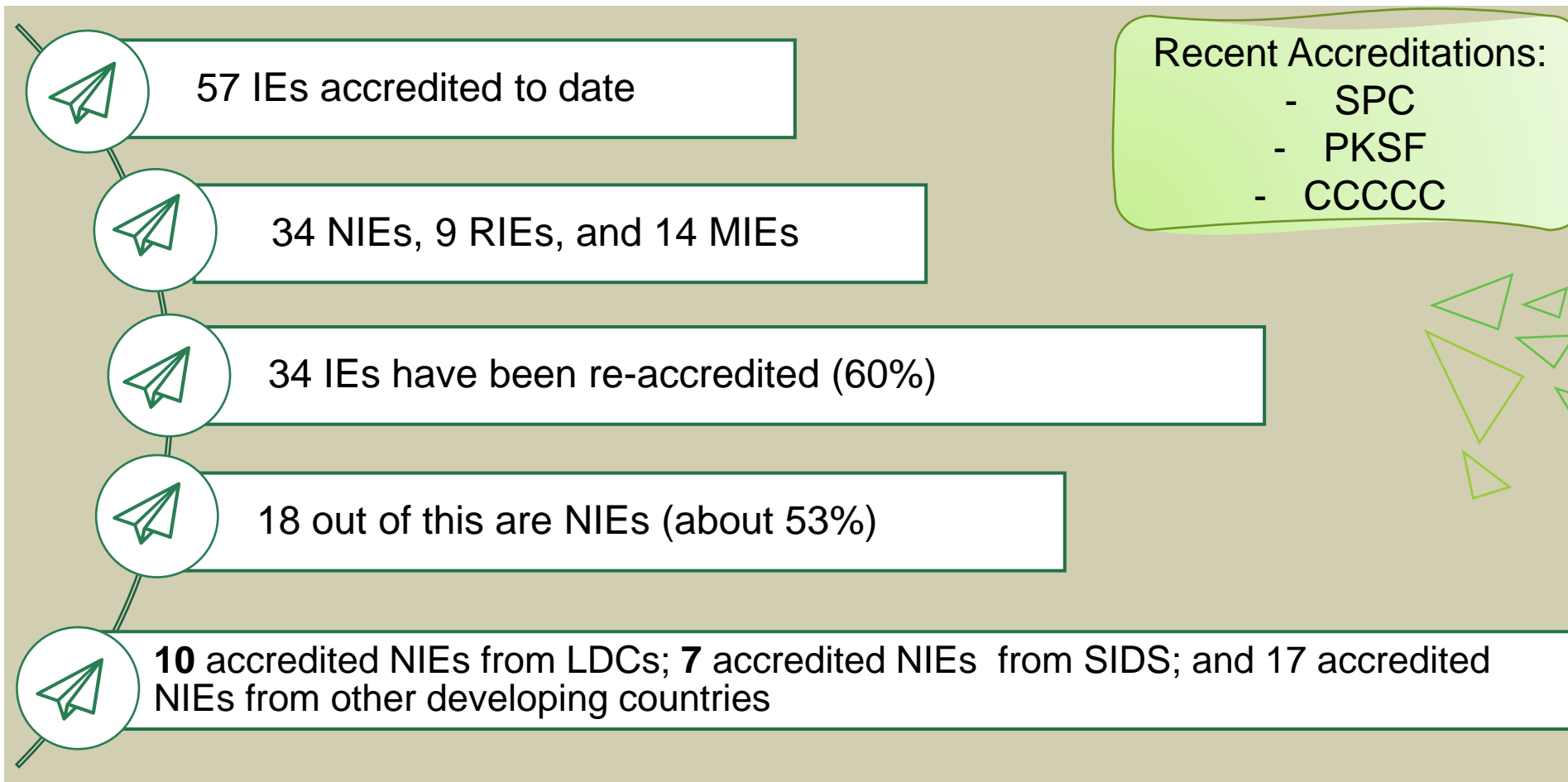
Funding sources

- ❑ Financed largely by government and private donors, and also from a **2%** share of proceeds from the sales of Certified Emission Reductions (CERs) issued under the Protocol's Clean Development Mechanism project.
- ❑ Pledges/Number of contributors (2015-2022):

Target year	Pledges, total	# of Contributors
2015	US\$ 74.1 M	4
2016	US\$ 81.4 M	7
2017	US\$ 95.9 M	6
2018	US\$ 129.0 M	9
2019	US\$ 90.0 M	11
2020	US\$ 116.0 M	6
2021	US\$ 349.0 M	17
2022	US\$ 242 M	17



Portfolio of implementing partners



Reinforces AF's commitment to Direct access and the importance of country ownership and building national capacity in adaptation





Adaptation Fund Funding Windows

	FUNDING TYPE	Accredited Entity Type	Maximum Funding Amount per Project/Program	How to Apply	Learning Resources
ACTION Action grants support eligible countries to undertake high quality adaptation projects/programmes consistent with their priority needs, goals and strategies.	Single Country: For addressing climate change impacts in one country through tangible outcomes	NIE, RIE, MIE	USD 10 Million per Project/Programme*	Apply here for grant funding or technical assistance	E-course: Direct Access: Unlocking Adaptation Funding & Community of Practice for Direct Access Entities .
	Regional: For addressing climate change impacts in 2+ countries in the same United Nations region, or adjacent regions, through tangible outcomes	RIE, MIE	USD 14 Million per Project/Programme (excluding the PFG)**	Apply here for grant funding or technical assistance	E-course: Direct Access: Unlocking Adaptation Funding .
	Enhanced Direct Access: Supports bottom-up approaches through local knowledge and locally led action. Project selection occurs at national/sub-national levels.	NIE	USD 5 Million per Project/Programme (including the PFG)	Apply here for grant funding or technical assistance	EDA guidance document
	Project Scale Up: Supports planning, design and overall capacity to develop scale-up pathways for AF funded projects nearing completion or already completed	NIE	USD 100,000 per Project/Programme	Apply here	E-training: Scale-Up Grants
INNOVATION Innovation grants support the development and diffusion of innovative adaptation practices, tools, and technologies.	Small (single country): To accelerate development of innovative practices, tools and technologies and demonstrate best practices for scale-up	NIE	USD 250,000 per Project/Programme	Apply here	E-training: Innovation Small Grants
	Large (single country or regional): To roll out or scale-up successful innovative practices, tools and technologies to a new country or at regional scale, involving 2+ countries/regions	NIE, MIE, RIE***	USD 5 Million per Project/Programme	Apply here	Innovation large grants guidance documents available here
	Adaptation Fund Climate Innovation Accelerator: Administered by UNDP & UNEP/CTCN to accelerate the development of innovative practices, tools and technologies and demonstrate best practices for scale-up	Non-accredited****	USD 250,000 per Project/Programme	Apply here for grant funding	UNDP , UNEP/CTCN
LEARNING & SHARING	Learning Grants: support the generation and dissemination of practical knowledge about effective adaptation activities and financing modalities to actors around the world	NIE	USD 150,000 per Project/Programme	Apply here for grant funding	E-training: Learning Grants
READINESS Readiness grants enable NIEs to provide peer support to countries seeking accreditation with the Fund and build capacity for undertaking various climate finance readiness activities.	Readiness Support Package Grant: Facilitate the delivery of more enhanced, targeted and tailored readiness support for accreditation to developing countries	NIE	USD 150,000 per NIE	Apply here	Website: Readiness
	Technical Assistance Grant for the Environmental and Social Policy and Gender Policy: For NIEs to strengthen capacity to address and environmental and social risks as well as gender related issues in their projects and programs	NIE	USD 25,000 per NIE	Apply here	E-course: Direct Access: Unlocking Adaptation Funding
	Technical Assistance Grant for the Gender Policy: For NIEs with robust environmental and social policies to enhance measures to avoid, minimize and/or mitigate adverse gender impacts	NIE	USD 10,000 per NIE	Apply here	E-course: Direct Access: Unlocking Adaptation Funding

Notes:
 *NIEs applying for single country projects through 2-step submission process (concept note; fully-developed proposal) with concept note can request a [Project Formulation Grant](#) (PFG) up to USD 50,000 in addition to the USD 10 million grant.
 **RIEs and MIEs applying for regional projects (2+ countries) through the 3-step submission process (pre-concept note; concept note; fully-developed proposal) can request a PFG up to USD 20,000 with a pre-concept note and a concept note a PFG up to USD 80,000. Those using the 2-step submission process (concept note; fully-developed proposal) can ask for PFG up to USD 100,000 with the concept note.
 ***For NIEs submitting proposals for large innovation grants, there is an opportunity to request a PFG of up to USD 50,000 per project. For a project for which PFG funding is sought, the total amount of funding inclusive of PFG cannot exceed USD 5 million. RIEs and MIEs submitting concept notes for large innovation grants for regional projects can request a PFG of up to USD 30,000. All IEs can apply to single country innovation large grants and MIE and RIEs only can apply to regional innovation large grants
 ****Open to wide range of applicants, including local governments, NGOs, young entrepreneurs, the private sector and others.

AF portfolio – Regional distribution to date

Multi
2 projects
\$10 Million



Latin America & Caribbean
32 projects
\$271.1 Million



Eastern Europe
6 projects
\$ 29.8 Million

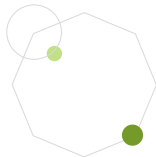


Asia-Pacific
48 projects
\$275.8 Million



Africa
51 projects
\$401.5 Million

TOTAL
139 projects
\$988.2 Million



AF portfolio of projects – cont'd

□ Project portfolio across diversity of sectors

- All projects tailored to local adaptation needs and country-driven



- Disaster Risk Reduction
19%



- Food Security
17%



- Agriculture
13%



- Water Management
12%



- Rural Development
12%



- Multi-sector
11%



- Coastal management
7%



- Ecosystem-based adaptation
4%



- Urban Development
4%



- Forests
1%



ADAPTATION FUND



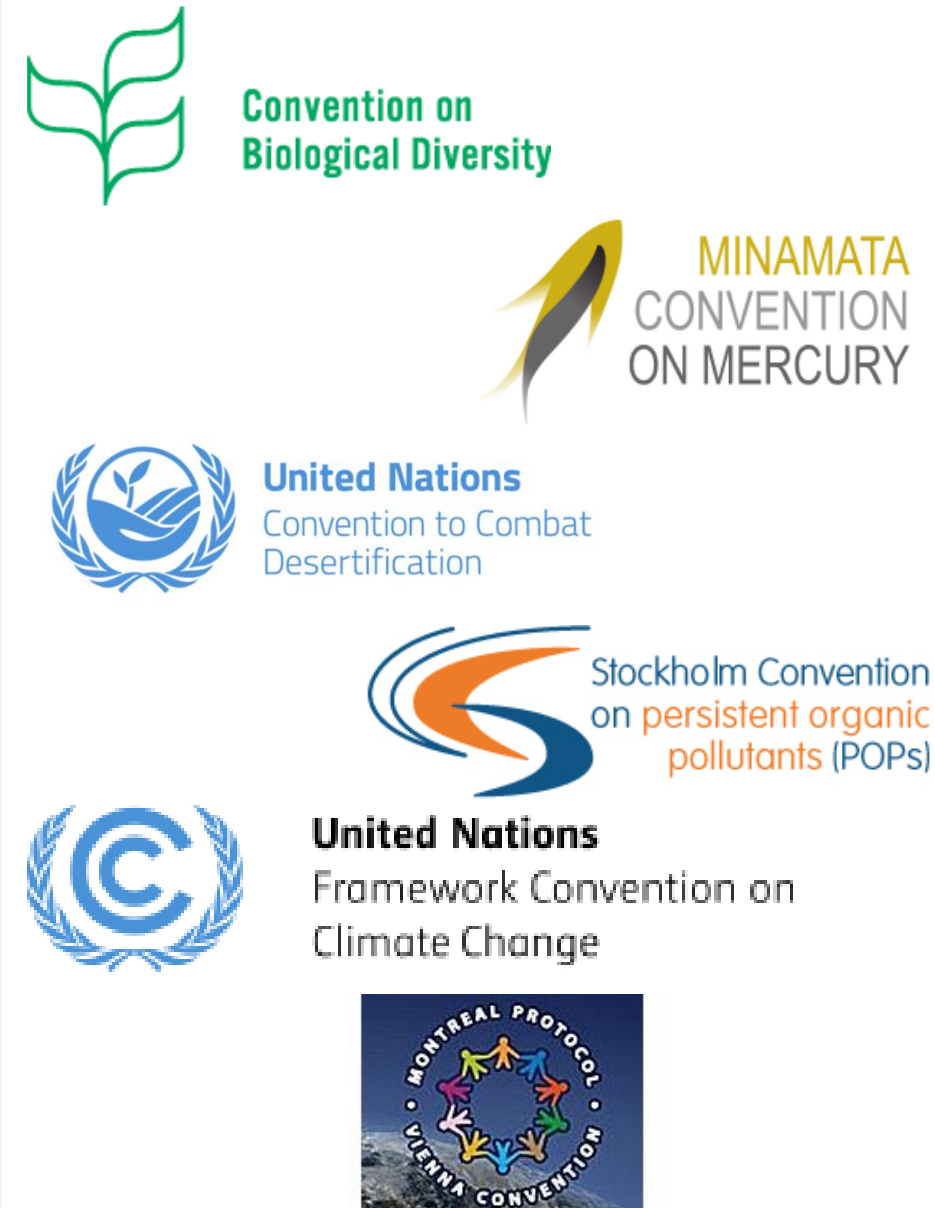
GEF's Unique Role?

As **financial mechanism**, GEF supports implementation of Conventions:

- ✓ National plan and strategy development
- ✓ Investing in national priorities towards Convention goals
- ✓ Convention reports and obligations
- ✓ Transparency enhancement
- ✓ Capacity building and technical assistance
- ✓ New fund

GEF functions under **guidance/decisions** from Conferences of Parties (COPs) and is **accountable**:

- ✓ Participation in negotiations and mandated events
- ✓ GEF report highlighting response
- ✓ Response to Party inquiries



GEF Council



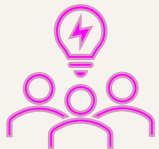
Has agreements with all COPs



Decides on key developments, such as serving a new Convention, new fund establishment, expanded areas of programming, in response to guidance



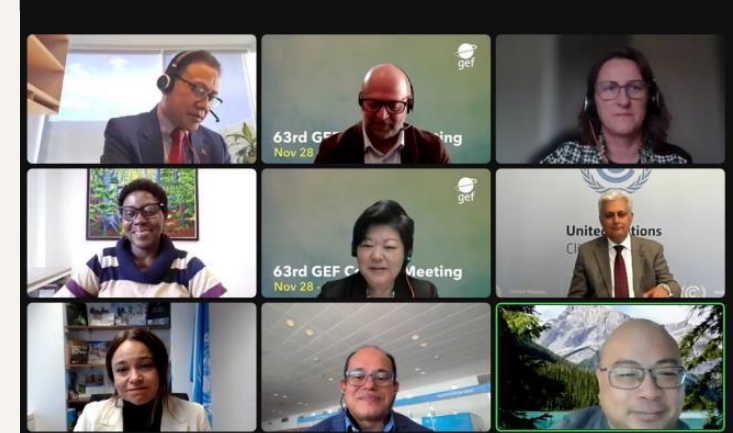
Reviews relations with Conventions, holds dialogue with Executive Secretaries



Deliberates and approves programs, projects, and other measures in line with COP decisions/guidance



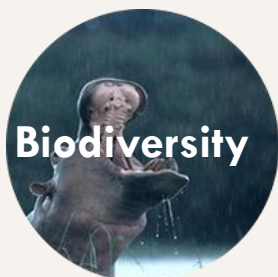
Approves all GEF COP reports



GEF Family of Funds

Trust Fund that serves CBD, CCD, Minamata Convention, Stockholm Convention, UNFCCC

GEF Trust Fund



Trust Funds that serve UNFCCC

LDCF

SCCF

CBIT Trust Fund



Trust Fund that serves CBD

NPIF Fund



to be discussed at June 2023 GEF Council

GBF Fund

CBD COP 15 Outcomes

- Montreal Canada under Chinese COP Presidency (December 7 to 20, 2022)
- Adopted Kunming-Montreal Global Biodiversity Framework (GBF) with 4 goals, 23 targets
- Global Biodiversity Framework (GBF) Fund to be established within GEF
- GEF guidance: Four-Year Outcome-oriented Framework of programme priorities for GEF-8



Key MEA Goals and Targets by 2030?



Kunming-
Montreal Global
Biodiversity
Framework



Paris Agreement:
45% emission
reduction by
2030 (net zero
by 2050) for
1.5°C



Achieve land
degradation
neutrality by
2030



Phase out PCB
use in
equipment by
2025,
elimination by
2028



Phase out
mercury-added
products by
2025 at latest

GEF programming to be informed by them and to make timely contributions

Outlook for 2023 and beyond?

- Stockholm COP 11, Minamata COP 5, UNFCCC COP 28 to take place in 2023
- Conclusion of Biodiversity beyond National Jurisdictions (BBNJ) this week? GEF's role?
- Implementation of decisions from CBD COP 15, UNFCCC COP 26/27, and CCD COP 15
- Plastic pollution negotiations
- Full set of blueprints to emerge:
 - ✓ Potential expansion of GEF's responsibilities
 - ✓ Implications for GEF-8 and beyond





Thank you very much!

For further information:
caoki@thegef.org





GEF Introduction Seminar
February 27 to March 2, 2023
Trust Funds and Partner Relations (DFTPR)
Development Finance (DFi)

R

01

GEF Governance and Structure

O

02

Trustee Roles and Responsibilities

A

03

Resource mobilization, Fin Mgt and Reporting

D

04

Financial Procedures Agreement

M

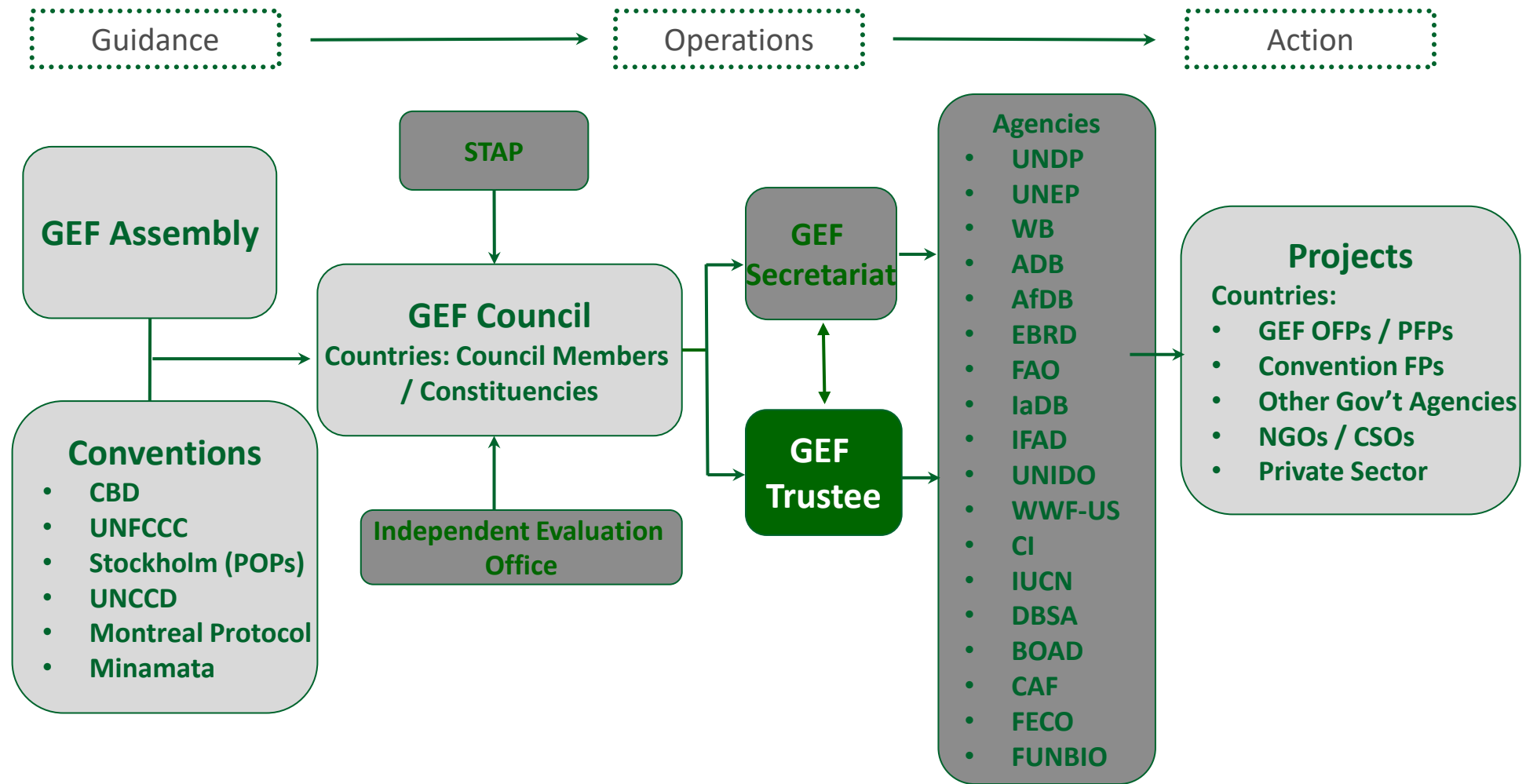
A

05

GEF Trustee Team

P

GEF Governance and Structure





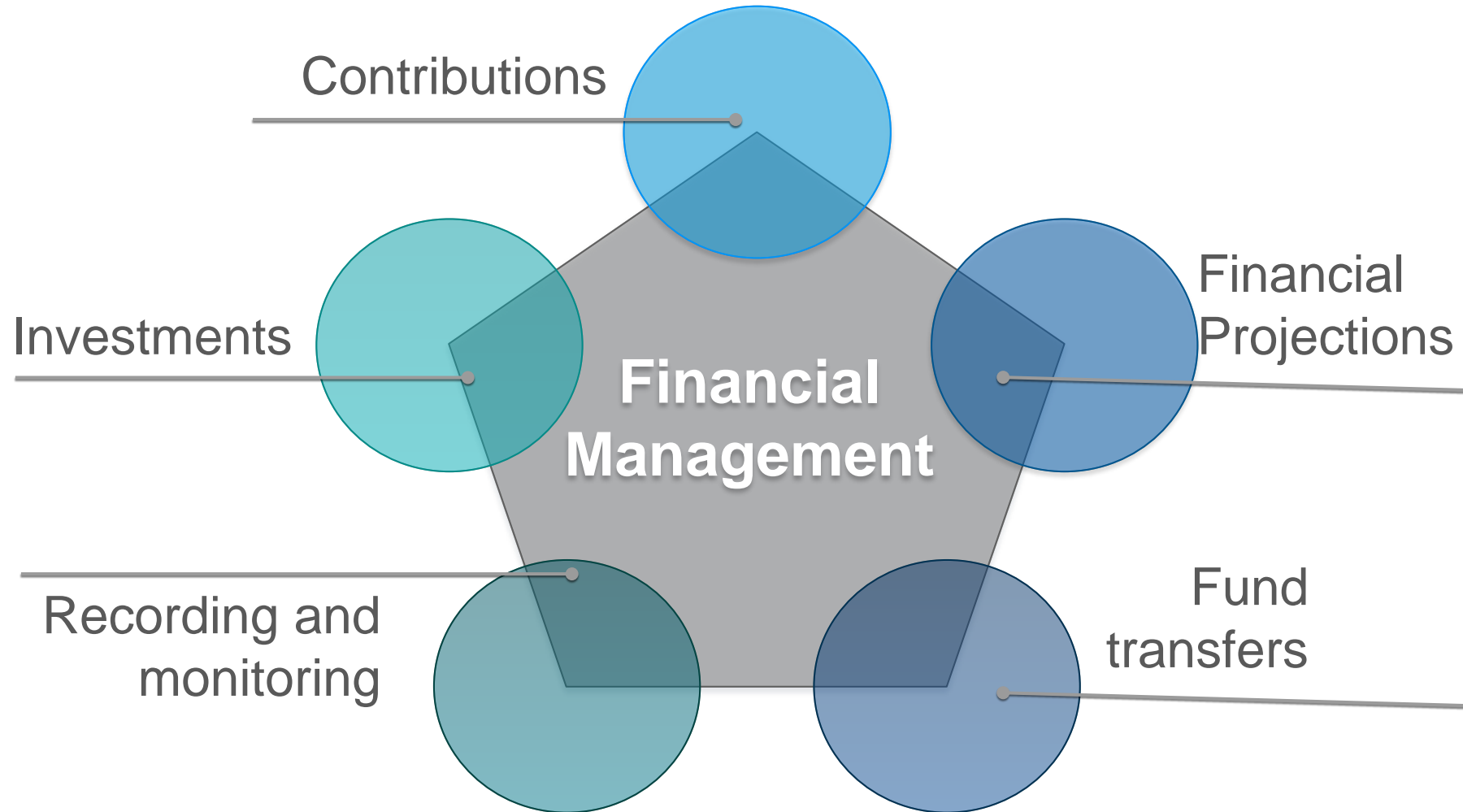
- Trustee's role and fiduciary responsibilities are set forth in the **GEF Instrument**, Annex B.

- Trustee co-chairs the **GEF Replenishment negotiations** for mobilizing resources through the established replenishment process

- **Manages the liquid assets** of the GEF Trust Fund and invests according to the IBRD's investment management principles, in a commingled investment portfolio

- Trustee **holds funds in trust** and **manages them for the purpose** provided under the GEF Instrument and decisions of the Council

- Ensure **compliance with Instrument** and other legal documents





❑ Investment Management of GEF Trust Fund Resources

- Resources received from contributors are invested in capital markets until they are disbursed for GEF projects
- GEF Trust Fund resources are pooled together with resources from other TFs and FIFs and managed as a commingled pool of assets “TF Pool”
- Recognizing the different risk and return profiles of TFs and FIFs, World Bank as Trustee provides portfolios with different investment horizons and risk constraints
- The investment objectives for the GEF Trust Fund are to optimize investment returns subject to preserving capital and maintaining adequate liquidity to meet foreseeable cash flow needs, within a conservative risk management framework.
- GEF Trust Fund assets are invested across four of the World Bank Trust Fund’s investment model portfolios:
 - “Model Portfolio 0” for short-term working capital needs
 - “Model Portfolio 1” with an investment horizon of one year, and
 - “Model Portfolio 2” with a broader investment universe and an investment horizon of three years
 - “Model Portfolio 8” specifically designed for SRI with an investment horizon of three years

➤ Sustainable and Responsible Investments

- The policy recommendation agreed during the GEF-7 replenishment negotiations required the Trustee to develop an SRI strategy for the GEF Liquid Investment Portfolio. The Trustee implemented ESG Integration as the default SRI strategy for all its portfolios including the GEF in 2019.
- In addition to ESG Integration, in 2020, the GEF Council requested the Trustee to develop a focused SRI strategy in alignment with GEF’s mission objective, the Trustee developed and offered “Sustainability Themed Investment Strategy” to the GEF. In December 2020, the GEF Council approved the Sustainability Themed Investments Strategy (“the Strategy”) for implementation.
- Implementation began in June 2021 and the current size of assets under management is USD 450 million.

➤ Impact Reporting

- Trustee published the inaugural Impact Report for the strategy through the regular Trustee Report in October 2022. A more detailed and granular “Impact Report” is available upon request.



Legal document governing the business relationship between IBRD as Trustee of the GEF Trust Fund and the GEF Agencies setting the definitions and rules for:

- Commitment of funds by Trustee
 - Transfer of funds to GEF Agency
 - Use of funds by GEF Agency
 - Reflows vs. Refund from GEF Agency to the Trustee
 - Financial reporting by Agency

I Agree



Reporting requirements under the FPA

Project approvals, cancellations and closures

Fee approvals and cancellations

Investment income, refunds from closures, reflows
from Non-Grant Instruments

Annual financial statements and audit reports

Reach us at geftrustee@worldbank.org



Website: fiftrustee.worldbank.org

Team Lead – Client relations, Replenishment and Portfolio management:

- Mr. Praveen Desabatla (pdesabatla@worldbank.org)

Contribution management and Agency liaison:

- Mr. Birama Nayagam Subramanian (bsubramanian@worldbank.org)
- Mr. Jorge Alberto Fuentes Lanza (jfuenteslanza@worldbank.org)

Foreign Exchange management and Investment management

- Mr. Rahul Gupta (rgupta11@worldbank.org)
- Ms. Michelle Yan Li (Yli22@worldbank.org)

Disbursement management and Internal Controls:

- Ms. Chalida Chararnsuk (cchararnsuk@worldbank.org)

Analytics and Reporting:

- Mr. Chandrasekhar Sirigiri (csirigiri@worldbank.org)

Program support:

- Mr. Krishna Thapa (kthapa@worldbank.org)
- Ms. Salome Awuor Aganda (saganda@worldbank.org)





Questions?



gef

GLOBAL ENVIRONMENT FACILITY
INVESTING IN OUR PLANET

GEF FUNDING

- GEF-8 Funding Structure
- STAR Country Allocation System
- GEF Fiduciary Standards
- Questions & Answers
(Please type your question in chat)



QR code: Agenda,
presentation &
reference materials

AGENDA

GEF-8 Resources

4-year

replenishment cycle
from July 1, 2022
to June 30, 2026

\$5.33 billion

pledged by
39 donor nations

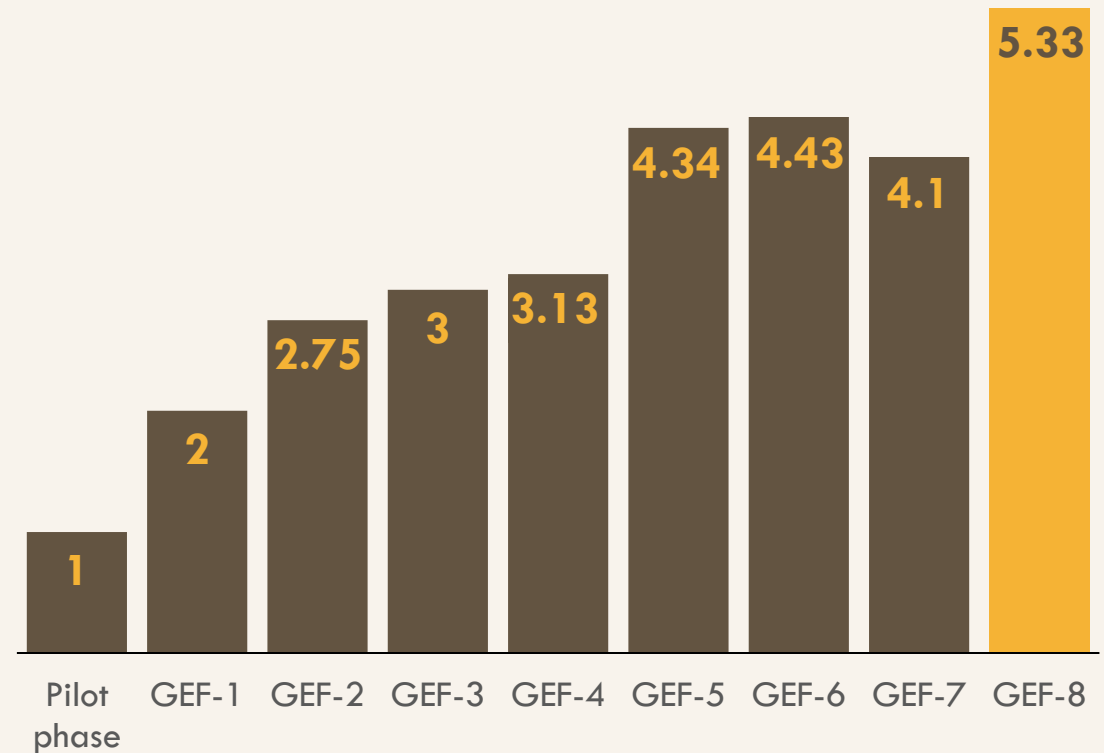
Country 'STAR'

allocation

GEF-8 strategy responds to
conventions and takes **an
integrated approach to
systems transformation**

GEF Replenishment Cycles

(billion USD)



GEF-8 SYSTEM OF TRANSPARENT ALLOCATION OF RESOURCES (STAR)

GEF TRUST FUND (\$5.33B)

BIODIVERSITY



CLIMATE CHANGE MITIGATION



LAND DEGRADATION



CHEMICALS & WASTE



INTERNATIONAL WATERS



GEF-8 STAR allocation (\$2.43B)

Integrated Programs Incentive & Contributions

Enabling Activities, CBIT

Global & Regional Set-aside

Non-Grant Instrument (NGI)

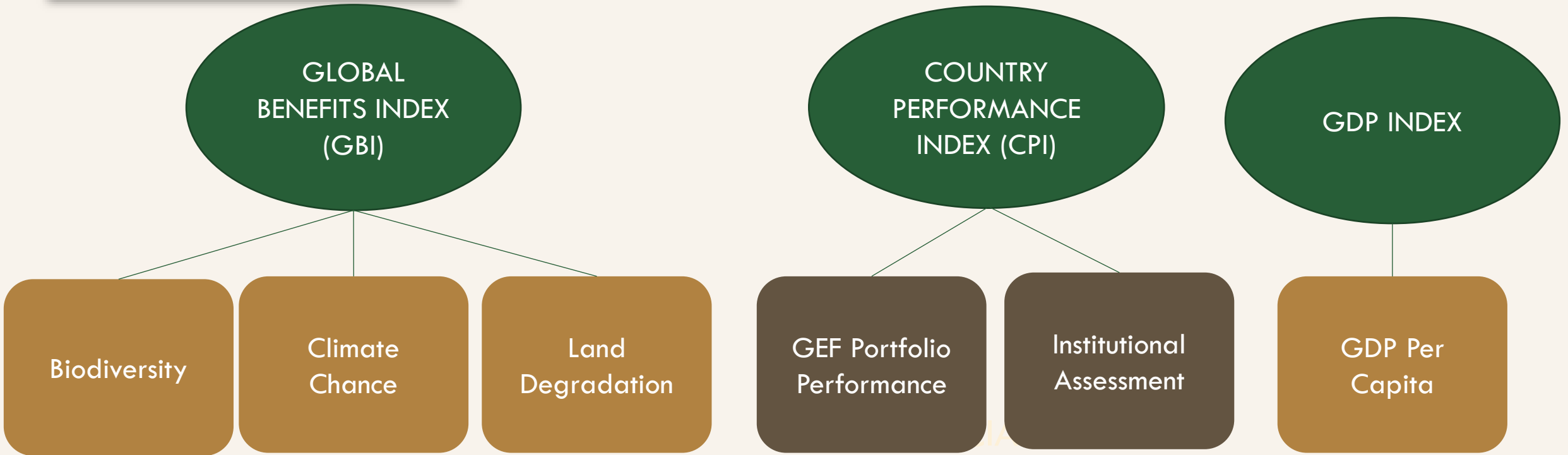
Small Grants Program (SGP)

Innovations Window

COUNTRY	BIODIVERSITY	CLIMATE CHANGE MITIGATION	LAND DEGRADATION	TOTAL
Bangladesh	4.00	4.58	2.00	10.58
Bhutan	4.00	2.00	2.00	8.00
Cambodia	4.65	2.00	3.14	9.80
China	43.64	47.02	3.03	93.68
Cook Islands	4.00	2.00	2.00	8.00
Fiji	7.96	2.00	2.00	11.96
India	43.78	41.65	3.89	89.32
Indonesia	82.15	20.05	1.45	103.65
Kiribati	4.58	2.00	2.00	8.58
Lao People's Democratic Republic	6.75	2.00	2.15	10.90
Malaysia	19.90	5.01	1.41	26.32
Maldives	4.00	2.00	2.00	8.00
Marshall Islands	4.41	2.00	2.00	8.41
Micronesia (Federated States of)	5.15	2.00	2.00	9.15
Mongolia	4.72	1.60	3.77	10.08
Nauru	4.00	2.00	2.00	8.00
Nepal	5.19	2.00	2.13	9.33
Nive	4.00	2.00	2.00	8.00
Pakistan	5.74	7.35	4.68	17.77
Palau	4.00	2.00	2.00	8.00
Papua New Guinea	25.04	2.00	2.00	29.04
Philippines	45.51	5.45	1.80	52.76
Samoa	4.00	2.00	2.00	8.00
Solomon Islands	9.33	2.00	2.00	13.33
Sri Lanka	13.91	2.04	3.05	19.00

GEF-8 STAR FORMULA

$$\text{GBI}^{0.8*} \text{CPI}^{1.0*} \text{GDP}^{-0.16}$$



Funding envelope

Floors

Index weight

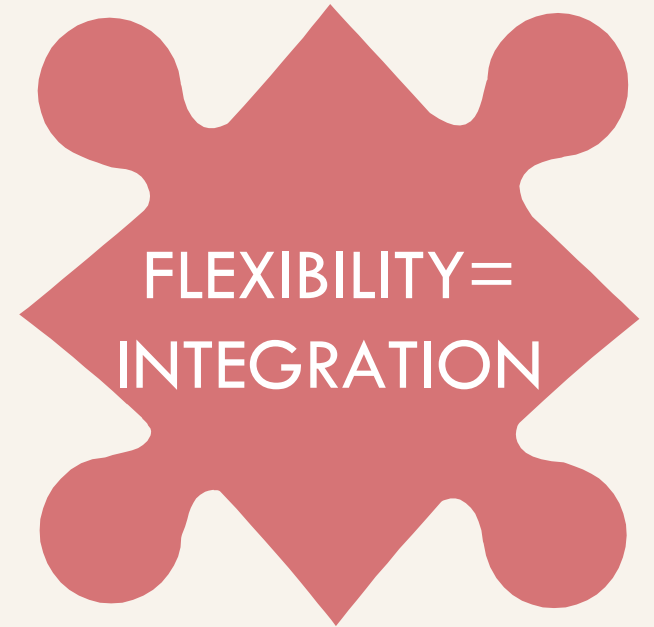
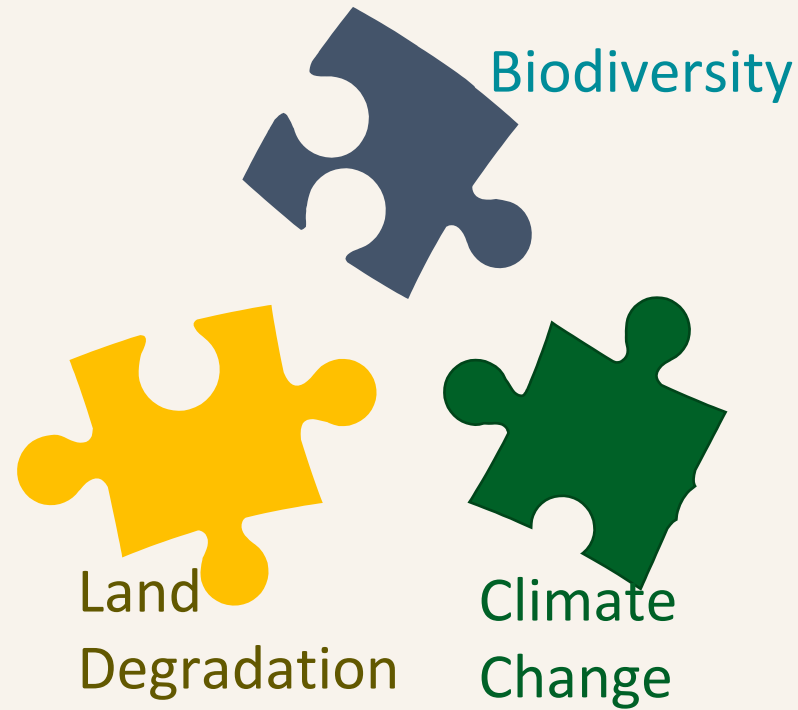
Ceilings

STAT COUNTRY ALLOCATION SYSTEM

Countries can move STAR allocated resources across the 3 focal area lines



**FULL
FLEXIBILITY**



STAT COUNTRY ALLOCATION SYSTEM

GEF-8 STAR Competition Window

Cohort
Top-5 STAR recipients:
Indonesia, China, India, Brazil and Mexico

Targeted Amount
US \$38 million

Ceiling
a single country can receive maximum **US\$9 million** from this competitive window

Theme
encourage country-driven investments that enhance **domestic policy coherence**

Procedures of Access
Annex IC: Procedures of access and operational guidelines for the competitive funds

The GEF-8 STAR Policy and STAR Guidelines, including the operational details of the competitive window, is available [here](#).





MINIMUM FIDUCIARY STANDARDS

**Project
Appraisal**

**Procurement
Process**

**Monitoring &
Project-at-risk
Systems**

**Project
Completion &
Financial Closure**

**Evaluation
Function**

**External
Financial Audit**

**Financial
Management &
Control
Frameworks**

**Oversight of
Executing Entities**

**Financial
Disclosure &
Conflict of
Interest**

**Code of
Ethics/Conduct**

Internal Audit

**Investigation
Function**

**Hotline &
Whistleblower
Protection**

**Anti-money
Laundering &
Combating the
Financing of
Terrorism**

REPORTING REQUIREMENT ON MISUSE OF FUNDS

- Accountable to GEF Agency
- Addresses any issue in accordance with Executing Entity Policies and Procedures

Executing Entity

GEF Agency

- Accountable to GEF Council
- Addresses any issue in accordance with Agency Policies and Procedures

GEF Council

- May request additional information (directly or through Trustee) or special audit
- May instruct Trustee to suspend cash transfers



Questions?



gef

GLOBAL ENVIRONMENT FACILITY
INVESTING IN OUR PLANET