



# 2023 GEF INTRODUCTION SEMINAR



GLOBAL ENVIRONMENT FACILITY  
INVESTING IN OUR PLANET

2023 GEF  
INTRODUCTION  
SEMINAR

AGENDA

February 27

- GEF Overview
- GEF Partnership
- GEF Funding

February 28

- GEF Operations & Policies
- GEF-8 Programming

March 1

- OFP & Civil Society Support
- Small Grants Program

March 2

- Communication & Outreach
- Support for Climate Change Adaptation & Resilience



QR code: Agenda,  
presentation &  
reference materials

# GEF OPERATIONS

- Project & Program Cycle
- Project Cancellation Policy
- Agency Fee Policy
- Project Implementation & Execution
- Questions & Answers  
(Please type your question in chat)

## AGENDA



QR code: Agenda,  
presentation &  
reference materials

# PROJECT CYCLE



City 1



City 2



City 3



City 4

# Project Cycle

Projects are submitted by GEF Implementing Agencies **through the GEF Portal (but projects are jointly prepared)**

**There are four modalities or types of projects - each modality uses a specific template (NEXT SLIDE)**

**Letters of Endorsement signed by the official GEF Operational Focal Point are a requirement**

**There are plans to further streamline the project cycle, so what you will see may have some variations in the future.**

Two important criteria for a project to be financed by GEF are  
(a) potential to generate Global Environmental Benefits; and  
(b) consistency with the Programing Directions

**SOME  
KEY  
CONCEPTS  
(underlined)**

# PROJECTS MODALITIES

**Full-Sized Project (FSP):** over US\$2M

PIFs Approved by **Council** (twice a year in their meetings)

**Medium-Sized Project (MSP):** US\$2M or less

PIFs are Approved by **GEF CEO** (on a rolling basis)

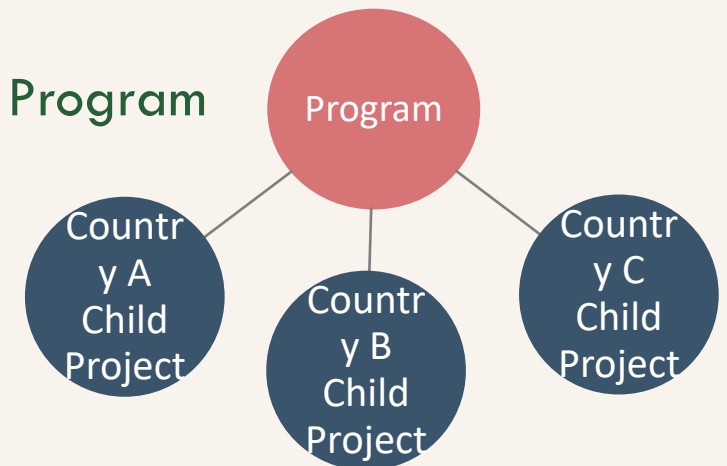
**Enabling Activities (EA)** entails a preparation of a plan, strategy or report to fulfill commitments under a Convention

EAs are Approved by **GEF CEO** (on a rolling basis)

**Program:** longer term and strategic arrangement of individual interlinked projects that aim at achieving large-scale impact

PFDs Approved by **Council** (twice a year in their meetings)

**Child Project:** an individual project under Program



**FULL-SIZED  
PROJECT CYCLE**  
(similar for Programs)

**START**

*OFP - LoE  
project concept  
consultation &  
development*

*Agencies -  
Convention  
Secretariats  
can provide  
comments  
to PIFs*

Step 1  
**CEO  
Clearance of  
PIFs**

*STAP -  
Reviews  
all PIFs*

Step 2  
**Council  
Approval of  
PIFs**

*Trustee  
Sets-aside  
funds*

*Agency  
project submission  
12 mon from step 2*

Step 3  
**CEO  
Endorsement**  
18 months from  
step 2

*Agency internal approval -- first disbursement,  
then implementation begins*

Step 5  
**Financial  
Closure**  
12 mon from  
step 4

Step 4  
**Completion/  
Terminal  
Evaluation**

*Annual Implementation Report  
Mid-Term Report*

# MEDIUM-SIZED PROJECT CYCLE





# Project Cancellation Policy



Unable to **submit** CEO Endorsement Request in time?

**OFP** or **Agency** (for Global/Regional projects) notifies the GEF CEO *prior* to the submission deadline.

Unable to **obtain** CEO Endorsement in time?

**OFP** or **Agency** (for Global/Regional projects) submits a Request for Extension to the GEF CEO *prior* to the deadline.

# Project Cancellation Policy



Unable to submit **CEO Approval Request** in time?

**OFP** or **Agency** (for **Global/Regional projects**) notifies the GEF CEO *prior to* the submission deadline.

Unable to **obtain CEO Approval** in time?

**OFP** or **Agency** (for **Global/Regional projects**) submits a Request for Extension to the GEF CEO *prior to* the deadline.

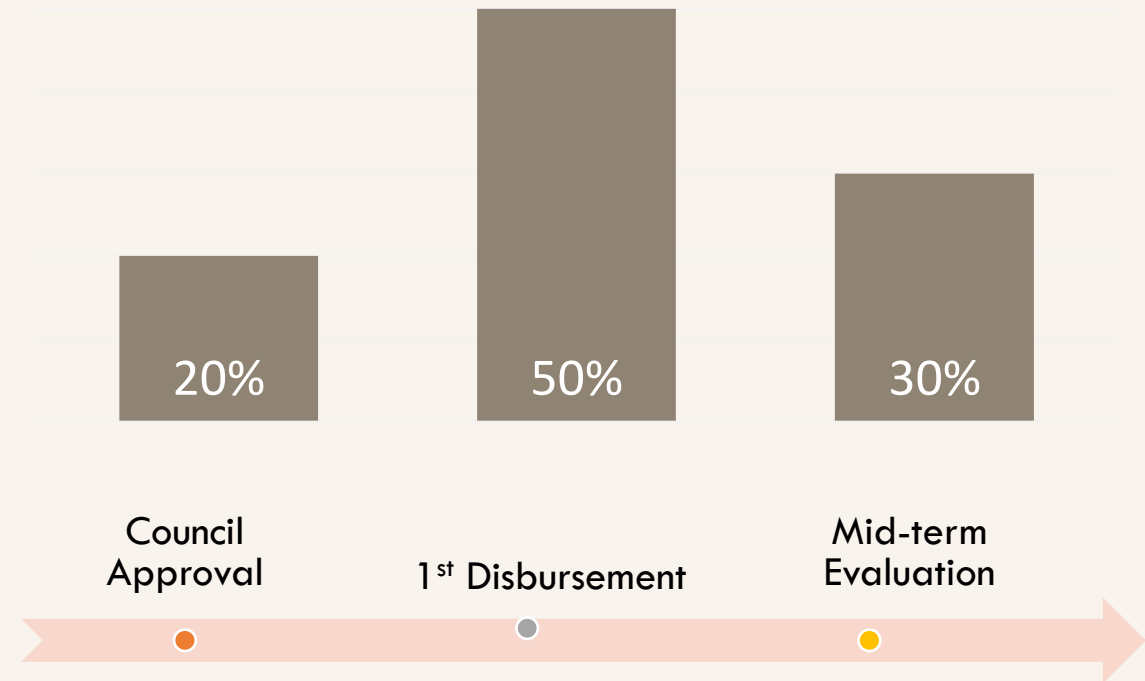
# Agency Fee Policy

## Agency Fee Structure

Child project under a Program: fee is based on the Program Financing amount irrespective of Child project financing amount

GEF financing amount	\$10M & less	Over \$10M
<b>10 Agencies</b> ADB, AFDB, EBRD, FAO, IDB, IFAD, UNDP, UNEP, UNIDO, WB	<b>9.5%</b>	<b>9.0%</b>
<b>8 Newly accredited Agencies</b> BOAD, CAF, CI, DBSA, FECO, FUNBIO, IUCN, WWF-US  SGP	<b>9.0%</b>	
Project Preparation Grant (PPG)	Same rate as the baseline project	

## Full-Sized Project Agency Fee Disbursement



## OPERATIONS



**Implementation** entails the oversight of project execution to ensure that the project is being carried out in accordance with agreed standards & requirements.

### Implementation



**Execution** refers to the management & administration of the day-to-day activities of projects in accordance with specific project requirements in an agreement with the GEF Agency responsible for implementation.

### Execution



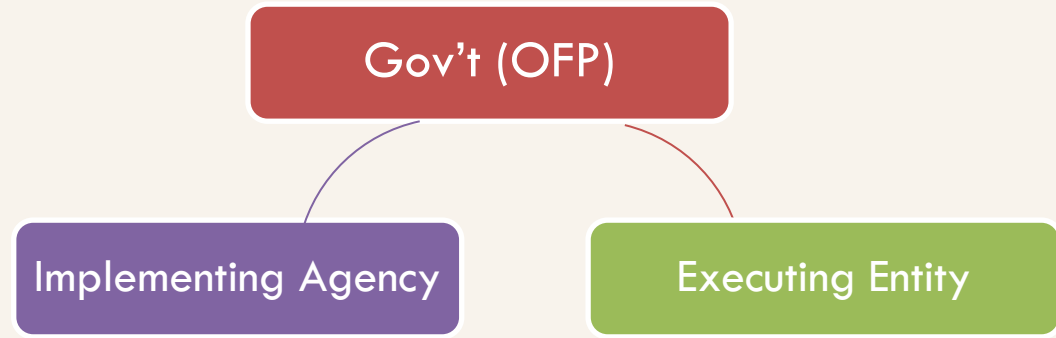
**Fiduciary Standards & Agency Fee Policy** mandate the **separation** of implementation & execution functions:

- Conflict of interest
- Diminishes Country ownership and limits capacity building

## OPERATIONS



## Project Implementation & Execution



Government agency - National / Regional / Global entities are highly encouraged to execute GEF projects (capacity development).

## OPERATIONS



# Project Implementation & Execution

If the GEF Implementing Agency aims to execute the project or portions of it:

- Ex-ante consultation with GEFSEC – if approved:
- Support letter signed by the OFP specifying the functions.
- Present institutional arrangement for the separation of implementation and executing functions in different departments of the GEF Agency – these must be presented at CEO Endorsement/Approval at the latest.
- Clear lines of responsibility, reporting and accountability within the GEF Agency between the project implementation and execution functions



# Questions?



gef

GLOBAL ENVIRONMENT FACILITY  
INVESTING IN OUR PLANET

# AGENDA

## GEF POLICY FRAMEWORK

- Results Framework
- Environmental & Social Safeguards
- Gender Equality
- Stakeholder Engagement
- Knowledge Management Requirements & Lessons Learned
- Questions & Answers  
(Please type your question in chat)



QR code: Agenda,  
presentation &  
reference materials



# GEF Policy Framework



GEF Policies & Guidelines:

<https://www.thegef.org/projects-operations/policies-guidelines>



# GEF-8 RESULTS MEASUREMENT FRAMEWORK & Monitoring Project Progress

POLICY FRAMEWORK

# Outline

- 1 | The GEF-8 Results Measurement Framework
- 2 | Project M&E Framework

# Outline

- 1 | The GEF-8 Results Measurement Framework
- 2 | Project M&E Framework

# We are looking to boost GEF-8 shared impact

Assisting the GEF in delivering on its priorities



Increasing **impact** on the environment



Enhance **speed and quality**



Better measuring our **shared impact** over time



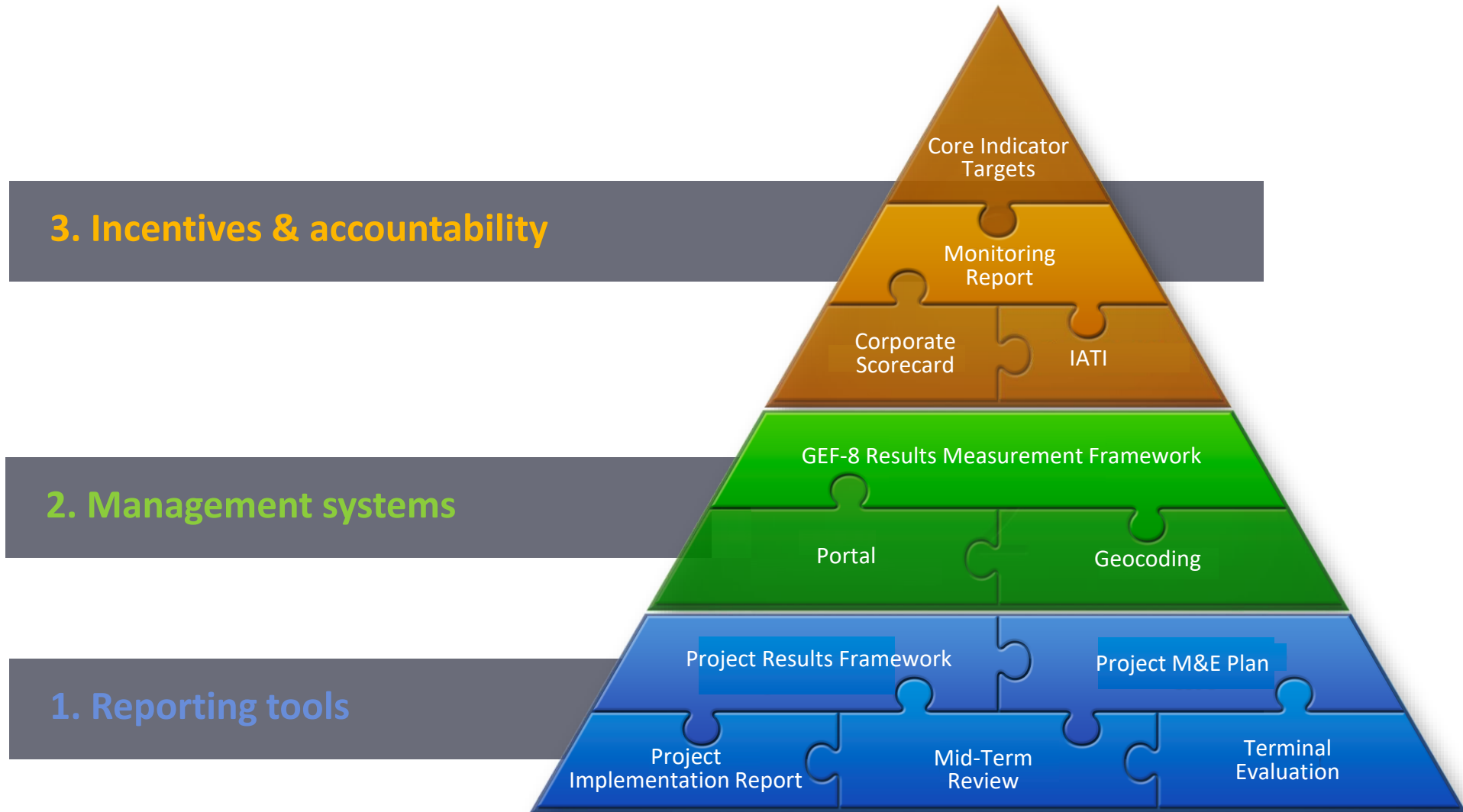
Communicate **institutional priorities**



Identify **lessons** from the past to guide the future

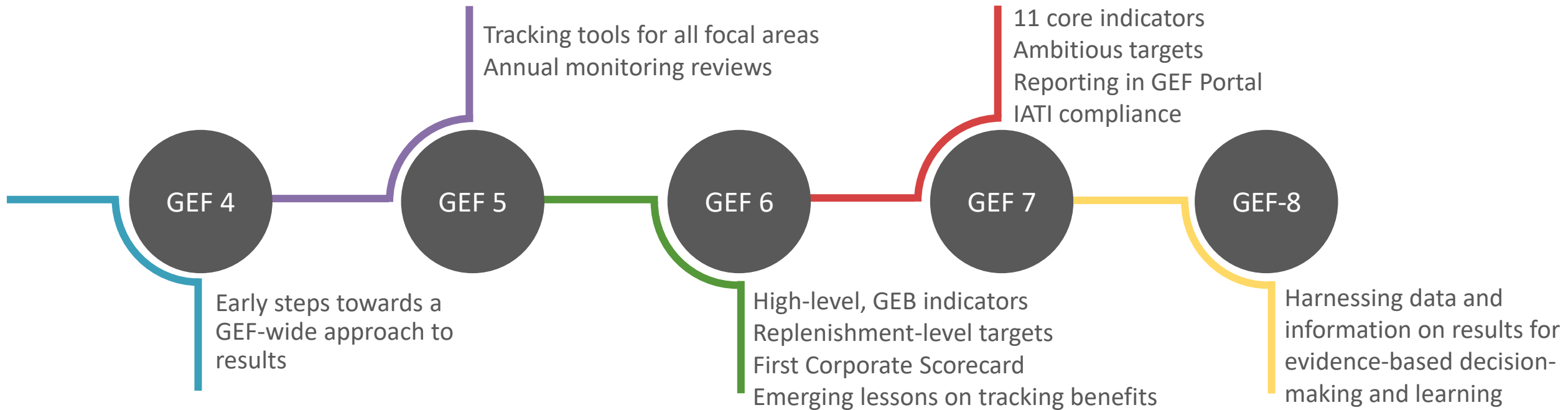
# Expanding from GEF-7 achievements

A suite of systems, processes and practices to manage for results

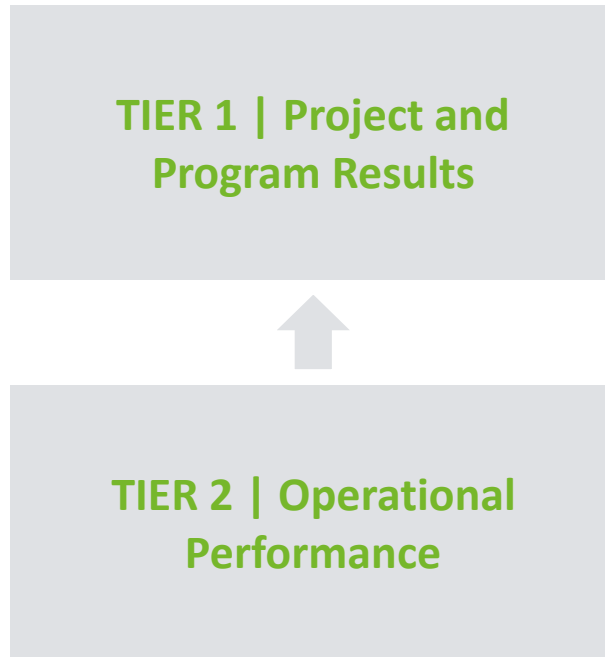


# Continuous improvement of the results architecture

We have re-engineered and simplified our approach



# The GEF-8 RMF strengthens the focus on delivering results



Better links project operational progress to actual results



Organizes metrics by results areas and drivers of performance



Reports cumulatively on actual results across the GEF-8 cycle



Enhances key environmental results areas with new metrics

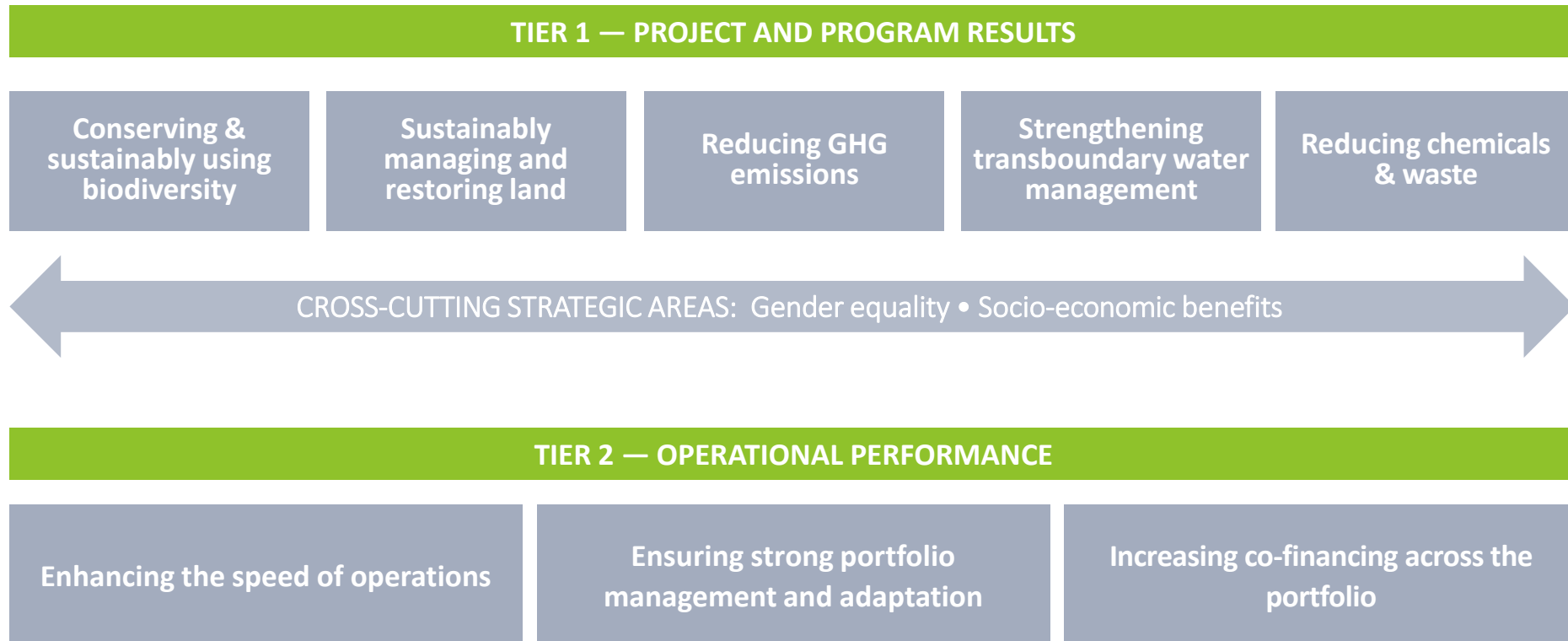


Focuses on adaptive management and timely completion



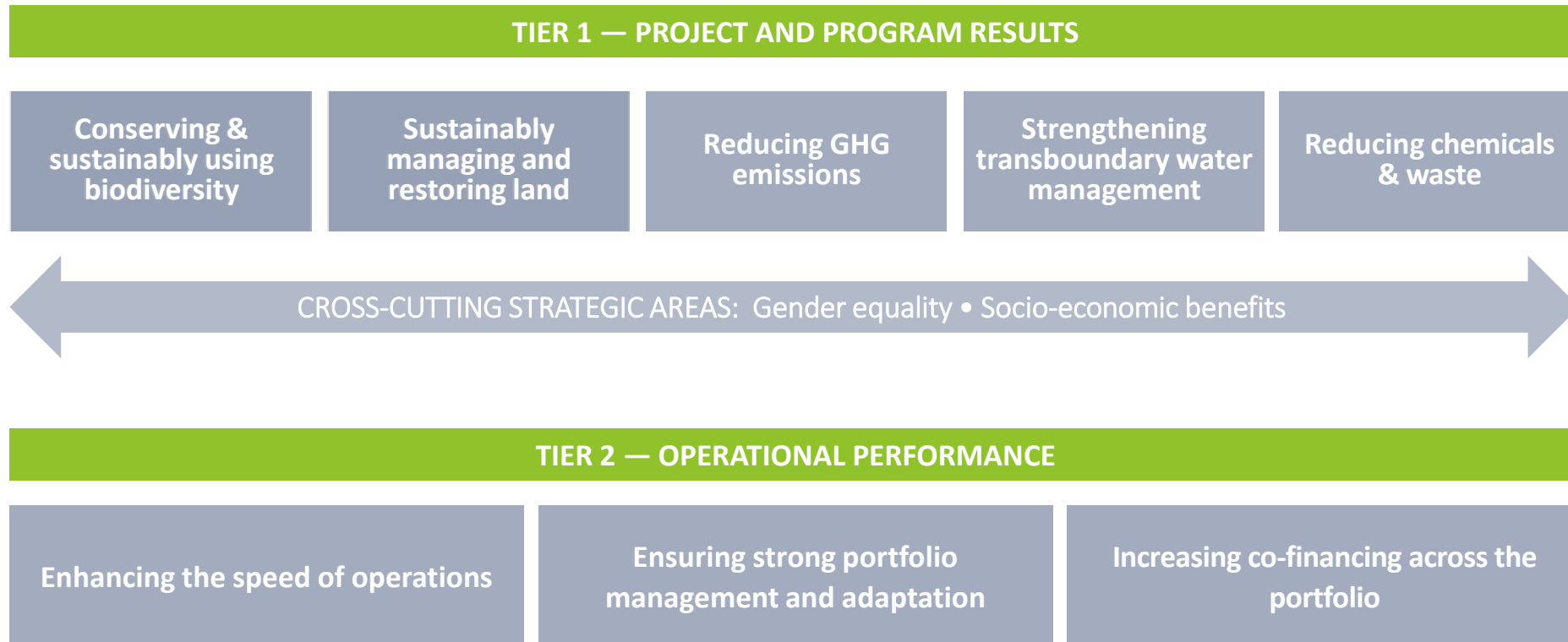
# Increasing strategic focus on key programming areas

## Maintaining the set of Core Indicators



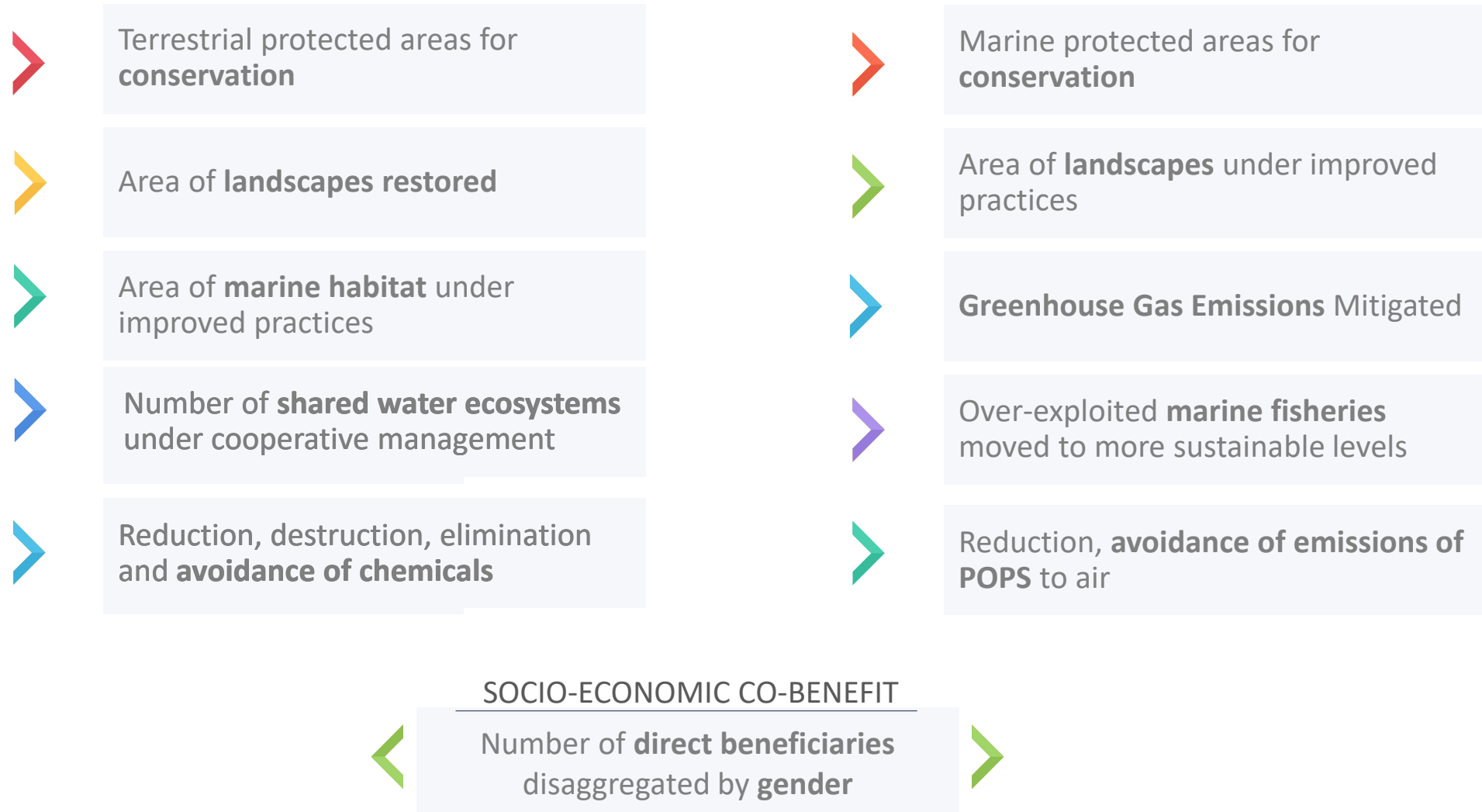
# Focusing on metrics that boost the partnership's impact

## Continuing the Portfolio Scorecard implementation



# Core indicators increase the focus on strategic priorities

GEF-7 indicators are aligned to environmental challenges



# Sub-indicators support and inform core indicators

They include disaggregated and contextual indicators

- ▶ *Core indicator*—Reduction, elimination and avoidance of **chemicals of global concern and their waste** (metric tons of toxic chemicals reduced)

## AGGREGATE UP TO CORE INDICATOR

- Solid and liquid Persistent Organic Pollutants (POPs) and POPs containing materials and products removed or disposed (POPs type)
- Quantity of mercury reduced
- Hydrochlorofluorocarbons reduced or phased out

## BRING CONTEXT TO CORE INDICATOR

- Number of countries with legislation and policy implemented to control chemicals and waste
- Number of low-chemical/non-chemical systems implemented, particularly in food production, manufacturing, and cities



# Results on gender

## Gender policy

- ▶ Enhance accountability and compliance
- ▶ Take gender into account during project preparation
- ▶ Action, results and lessons during implementation
- ▶ Conduct gender analysis and action plan

## Reporting on gender

- ▶ Access and control of natural resources
- ▶ Improve of women participation in decision making
- ▶ Socio economic benefits and services for women

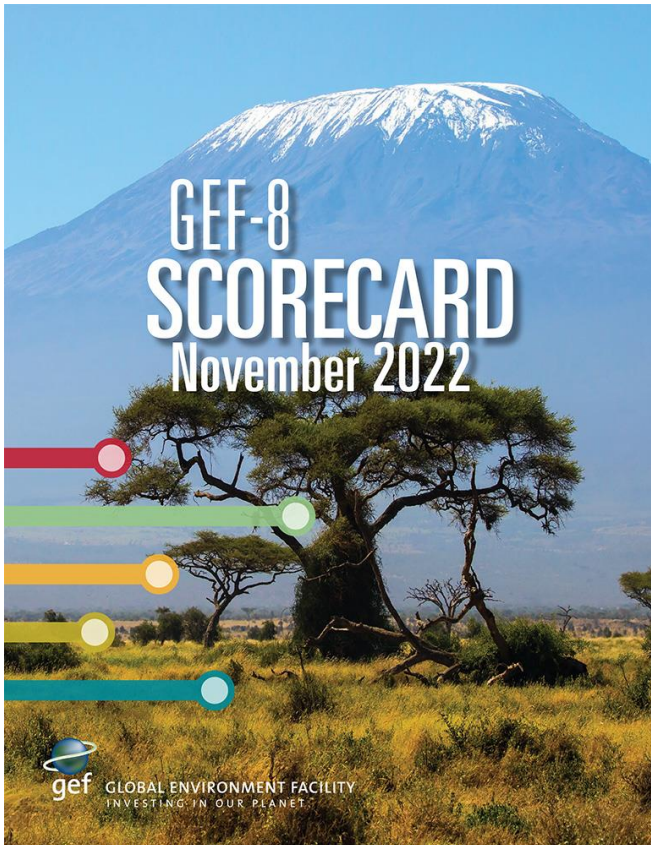
# GEF-8 TARGETS & EXPECTED CONTRIBUTION FROM INTEGRATED PROGRAMS

CORE INDICATOR	GEF-8 TARGETS	EXPECTED IP CONTRIBUTION (%)
<b>CONSERVING &amp; SUSTAINABLY USING BIODIVERSITY</b>		
1 Terrestrial protected areas created or under improved management	150 million ha	49
2 Marine protected areas created or under improved management	100 million ha	48
4 Area of landscapes under improved practices	195 million ha*	51
5 Area of marine habitat under improved practices to benefit biodiversity	70 million ha	69
<b>SUSTAINABLY MANAGING AND RESTORING LAND</b>		
3 Area of land and ecosystems under restoration	10 million ha	64
<b>REDUCING GHG EMISSIONS</b>		
6 Greenhouse Gas emissions mitigated	1850 million metric tons of CO <sub>2</sub> e	51
<b>STRENGTHENING TRANSBOUNDARY WATER MANAGEMENT</b>		
7 Shared water ecosystems under new or improved cooperative management	40	18
8 Globally over-exploited marine fisheries moved to more sustainable levels	2.1 million metric tons	1
<b>REDUCING CHEMICALS AND WASTE</b>		
9 Chemicals of global concern and their waste reduced	300 thousand metric tons	17
10 Persistent organic pollutants to air reduced	5900 grams of toxic equivalent	33

# GEF-8 RMF – Key Documents

Ensuring a consistent use of Core Indicators and approach to reporting

GEF-8 PROGRESS



ANNUAL UPDATE

2022  
Monitoring Report

GUIDELINES

Implementation of  
the GEF-8  
Results Measurement  
Framework

# The GEF Partnership has achieved significant impact

Tangible results across environmental areas in fiscal 2022



## BIODIVERSITY

**18 million**

hectares of protected areas created or managed sustainably

That's **equal** to the size of Cambodia



## RESTORE LAND

**1.3 million**

hectares of land under sustainable land management

That's **over 900,000** football fields



## MITIGATE CLIMATE CHANGE

**147 million**

tons of CO<sub>2</sub>e in greenhouse gas emissions expected to be reduced

That's the emissions of nearly **30 million** gas passenger vehicles driven for one year



## MANAGE INTERNTL. WATERS

**4** shared water ecosystems under cooperative management

That's **more** countries working together in Large Marine Areas



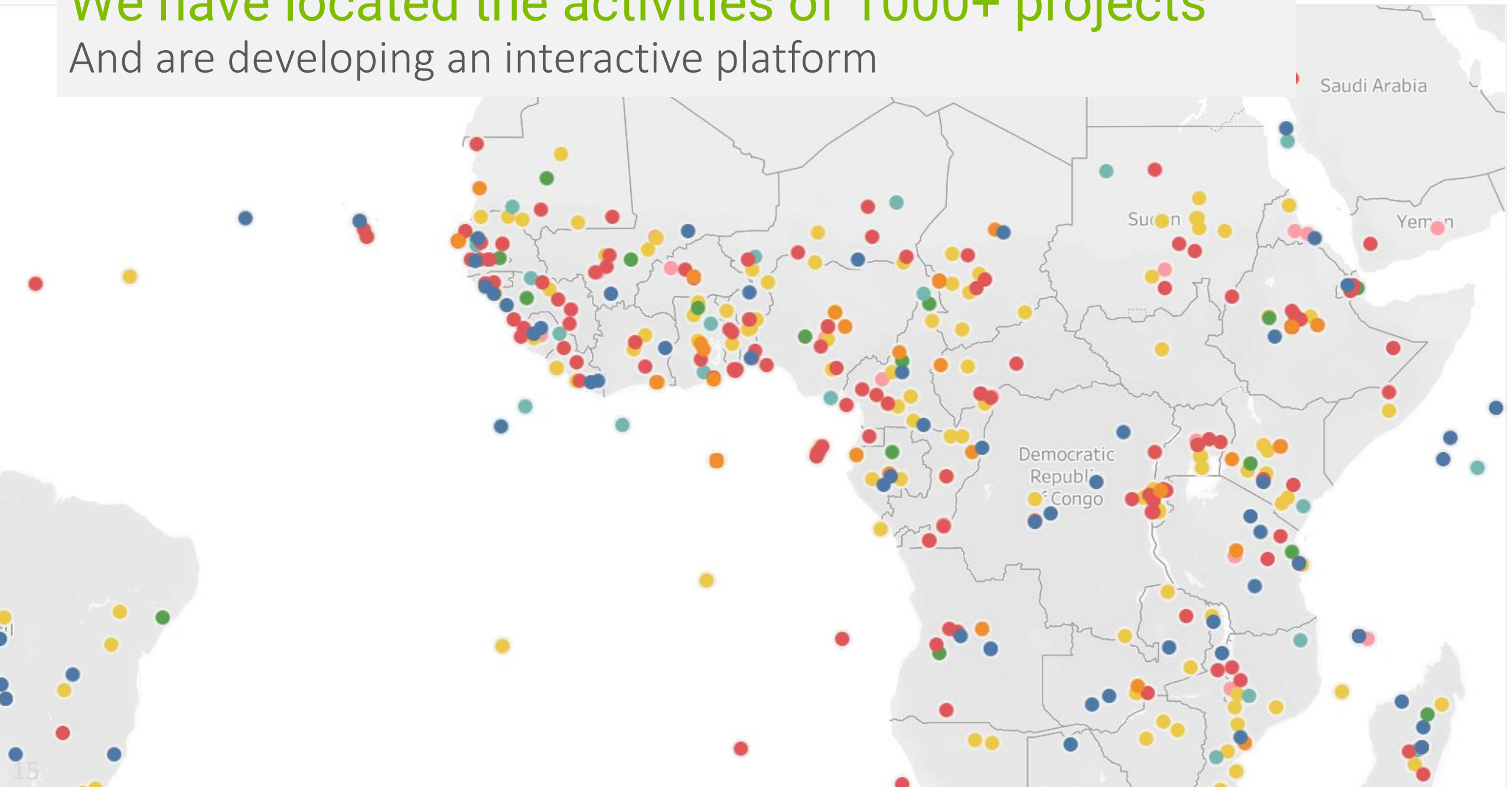
## REDUCE CHEMICALS & WASTE

**4.5 thousand tons** of chemicals of global concern and their waste reduced

That's the equivalent of **20** statues of liberty



**We have located the activities of 1000+ projects**  
And are developing an interactive platform



# What does the GEF Results Architecture mean for you?

- 1 Increasing **strategic focus** on key outcomes
- 2 Better measuring the **GEF impact on the environment**
- 3 Enhancing attention on **achieving actual results**
- 4 Promoting **accountability and transparency**
- 5 Draw **lessons** from the past to guide the future

# Outline

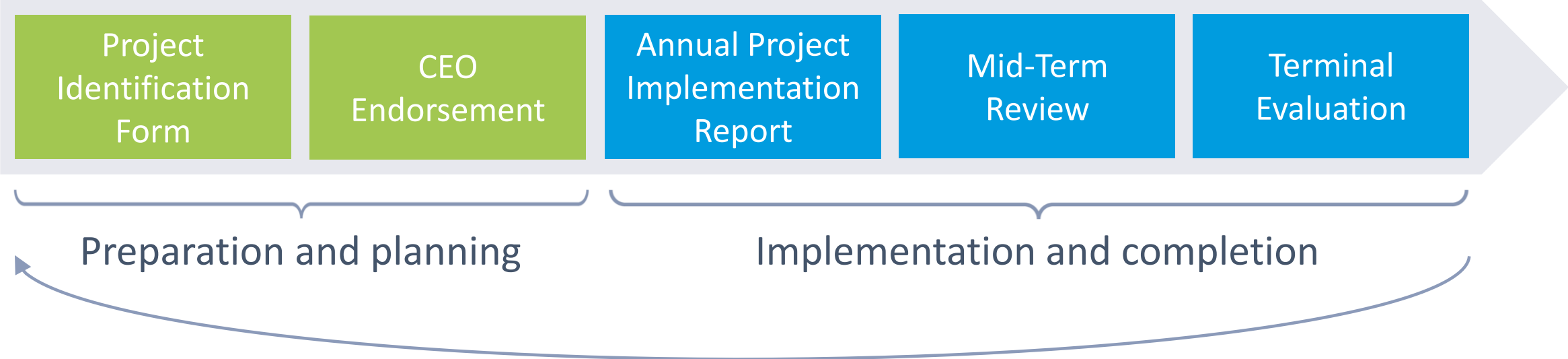
- 1 | The GEF-8 Results Measurement Framework
- 2 | Project M&E Framework

# What is monitoring?

- ▶ Starts at the project design stage
- ▶ Standardized data collection and analysis on specific indicators
- ▶ Continuous and systematic function
- ▶ Usually conducted in-house, as opposed to independently
- ▶ Provides information on progress in the achievement of agreed objectives and the use of allocated resources

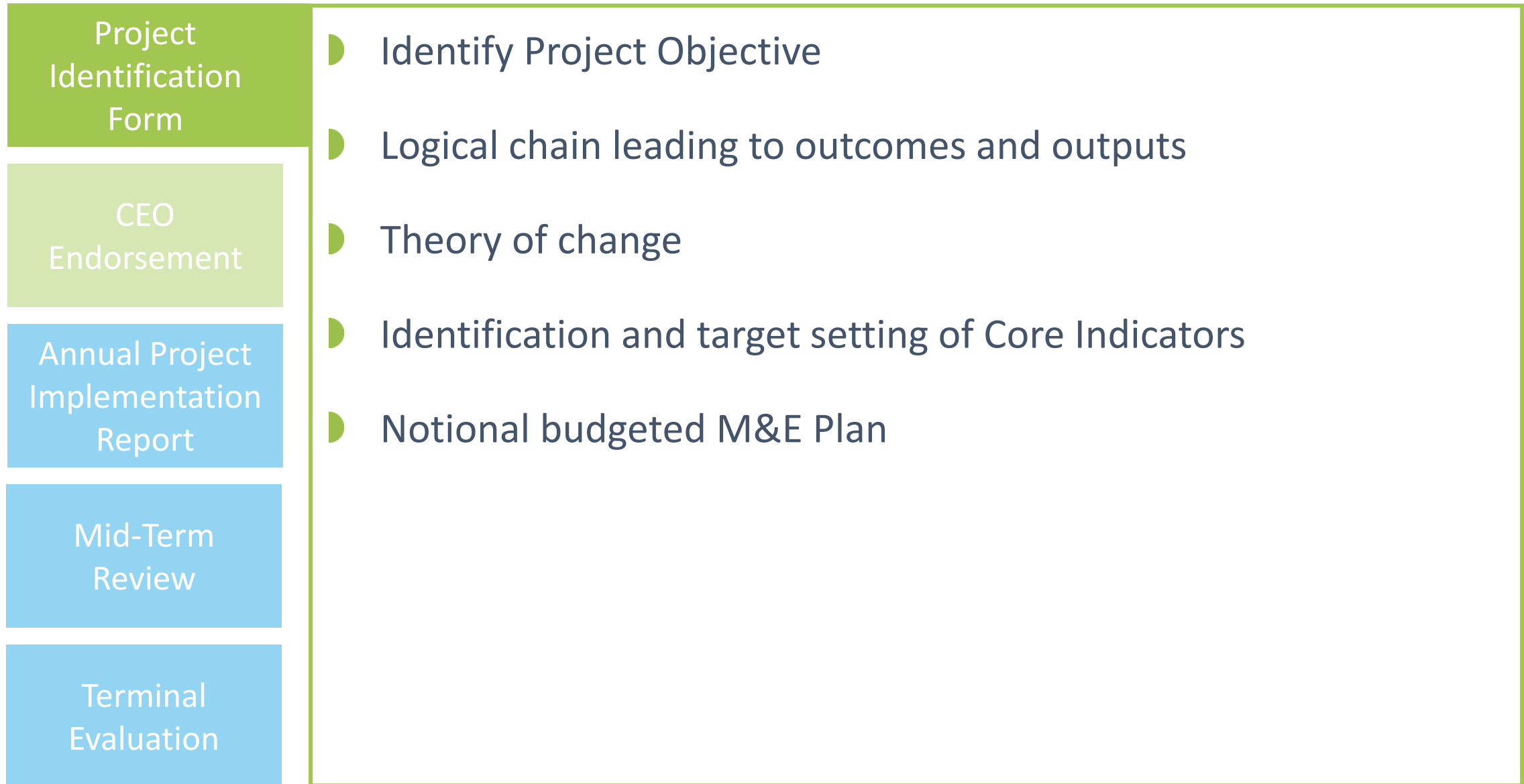
# The monitoring policy tracks implementation progress

It provides requirements aligned to agencies' practices

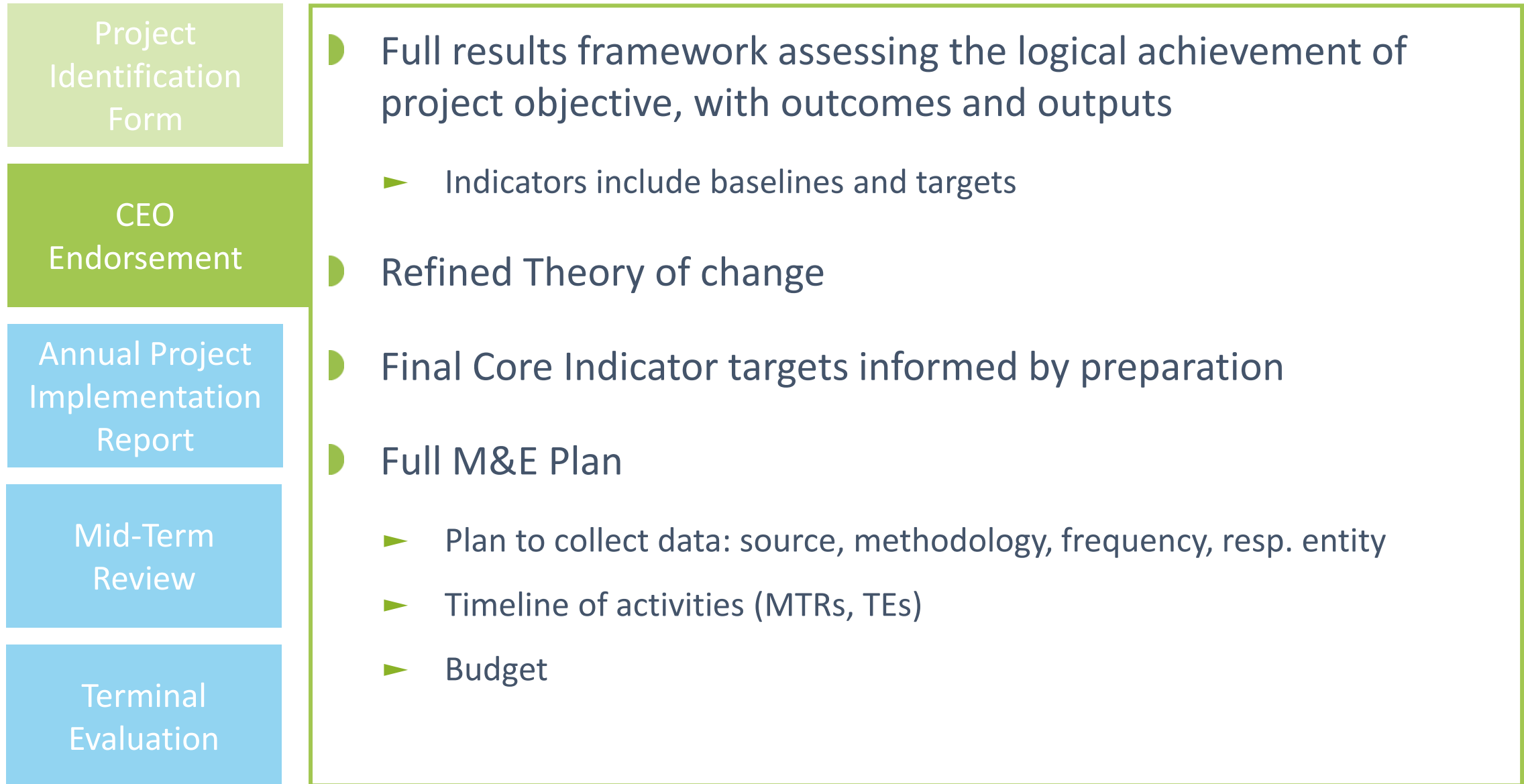


Learning feeds back into project design

# The monitoring policy tracks implementation progress



# The monitoring policy tracks implementation progress



# The monitoring policy tracks implementation progress

Project  
Identification Form

CEO Endorsement

Annual Project  
Implementation  
Report

Mid-Term Review

Terminal  
Evaluation

## Update on key progress indicators:

- ▶ Project status
- ▶ Disbursement
- ▶ Ratings—Implementation Progress, Development Outcome and Risk
- ▶ Expected MTR and Terminal Evaluation dates
- ▶ Indicators include baselines and targets

## Qualitative update

- ▶ Project implementation progress and challenges
- ▶ Gender plan, Stakeholders engagement and Knowledge activities



# The monitoring policy tracks implementation progress

Project  
Identification  
Form

CEO  
Endorsement

Annual Project  
Implementation  
Report

Mid-Term  
Review

Terminal  
Evaluation

- ▶ Full MTR report
- ▶ Update on key progress indicators:
  - ▶ Actual core indicators results achieved
  - ▶ Progress in materializing co-financing
- ▶ Qualitative update
  - ▶ Project implementation progress and challenges
  - ▶ Gender plan, Stakeholders engagement and Knowledge activities
  - ▶ Lessons learned

# The monitoring policy tracks implementation progress



# Specific project modalities require different requirements

Designed to respond to each project type

## ENABLING ACTIVITIES



Regular reporting and  
streamlined set of indicators

## PROGRAMS

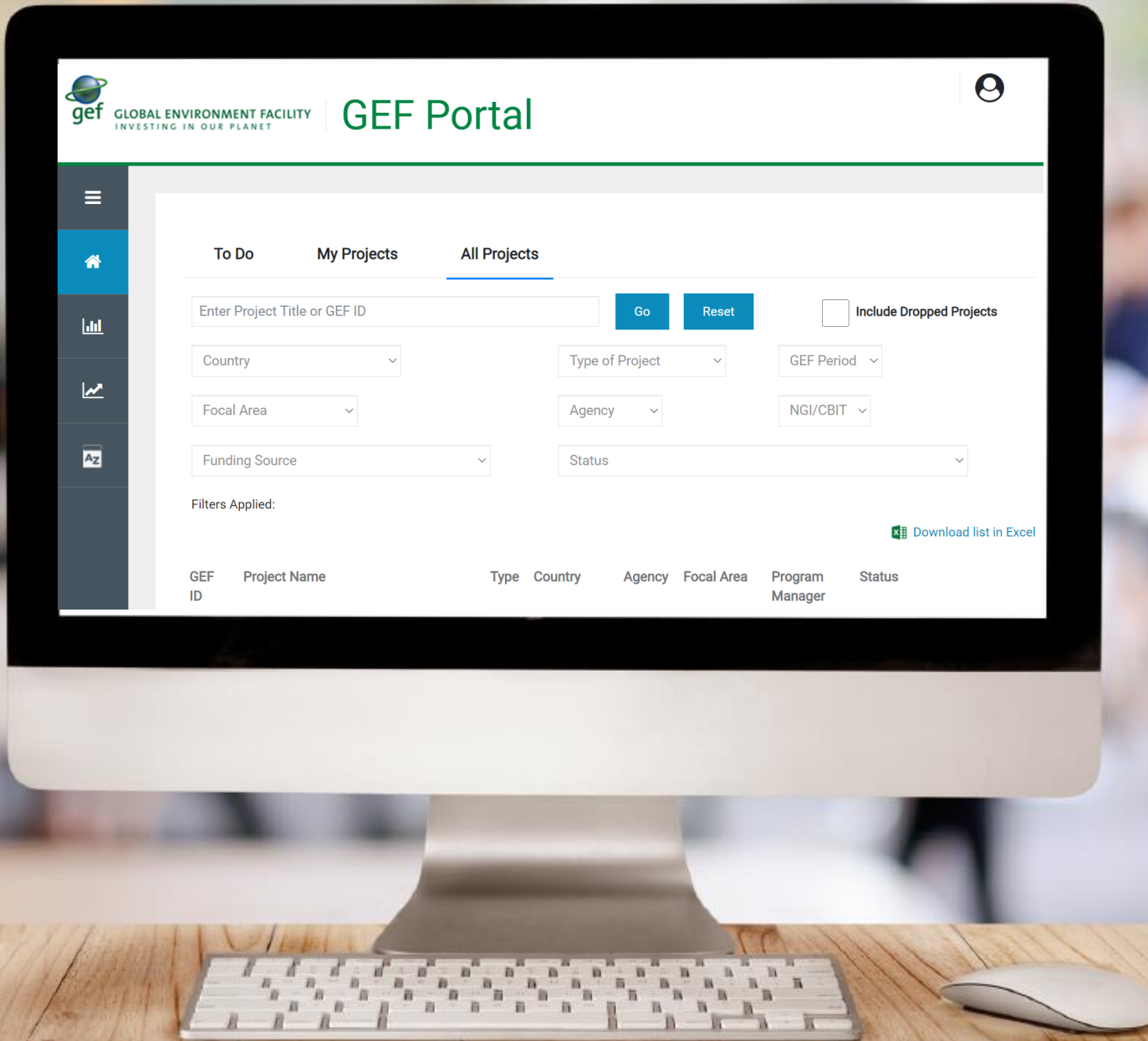


Theory of change and  
annual progress update

## SMALL GRANTS PROGRAM



Regular project features and  
consolidated annual report



# Access to project data

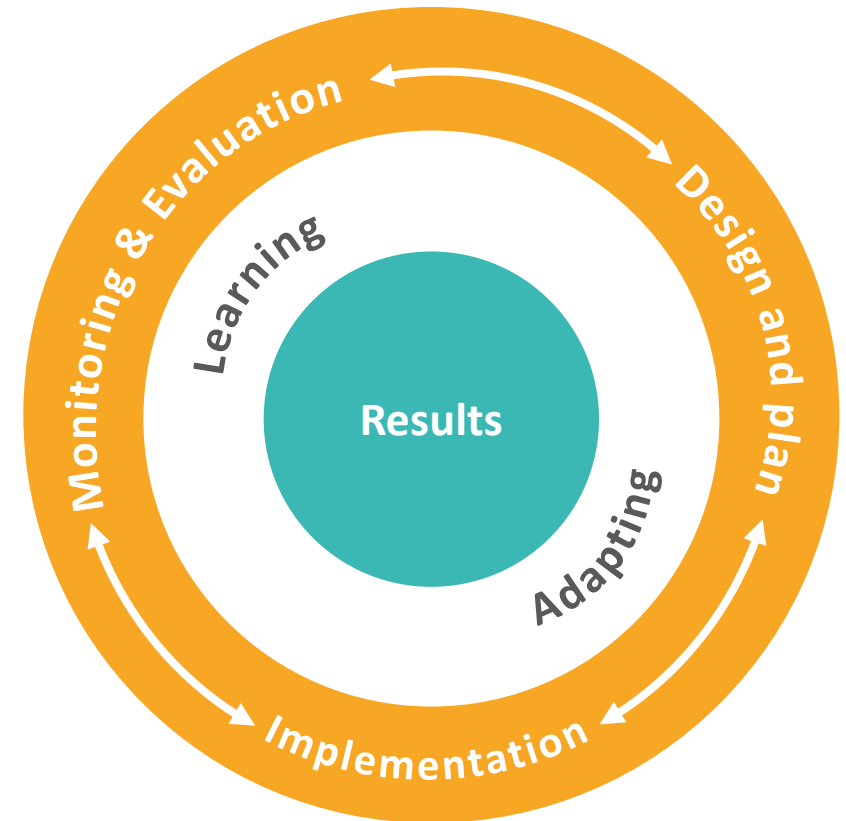
## Real-time reporting

- ▶ Direct entry
- ▶ Live interface on progress
- ▶ Enhances country engagement
- ▶ Allows for enhanced reporting

# Strengthening M&E quality, Promoting adaptation

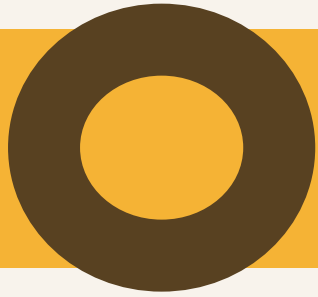
Designing sound M&E frameworks and promoting adaptation

- ▶ Continue promote the use of theories of change to enhance learning and evaluability
- ▶ Design Impact Program M&E plan to facilitate aggregation across projects
- ▶ Better track adaptation during implementation
- ▶ Encourage the use of Mid-Terms Reviews for learning and solving implementation problems



# What does monitoring progress mean for you?

- 1 Achieving projects on **time, with quality and results**
- 2 Being accountable by making available **progress data**
- 3 Tracking progress **over time**
- 4 Receiving early warning for **proactive corrective action**
- 5 Engaging on a **performance-driven dialogue**



# GEF Policies

**Environmental & Social  
Safeguards**

**Gender Equality**

**Stakeholder Engagement**



**GEF Policies & Guidelines:**

**<https://www.thegef.org/projects-operations/policies-guidelines>**

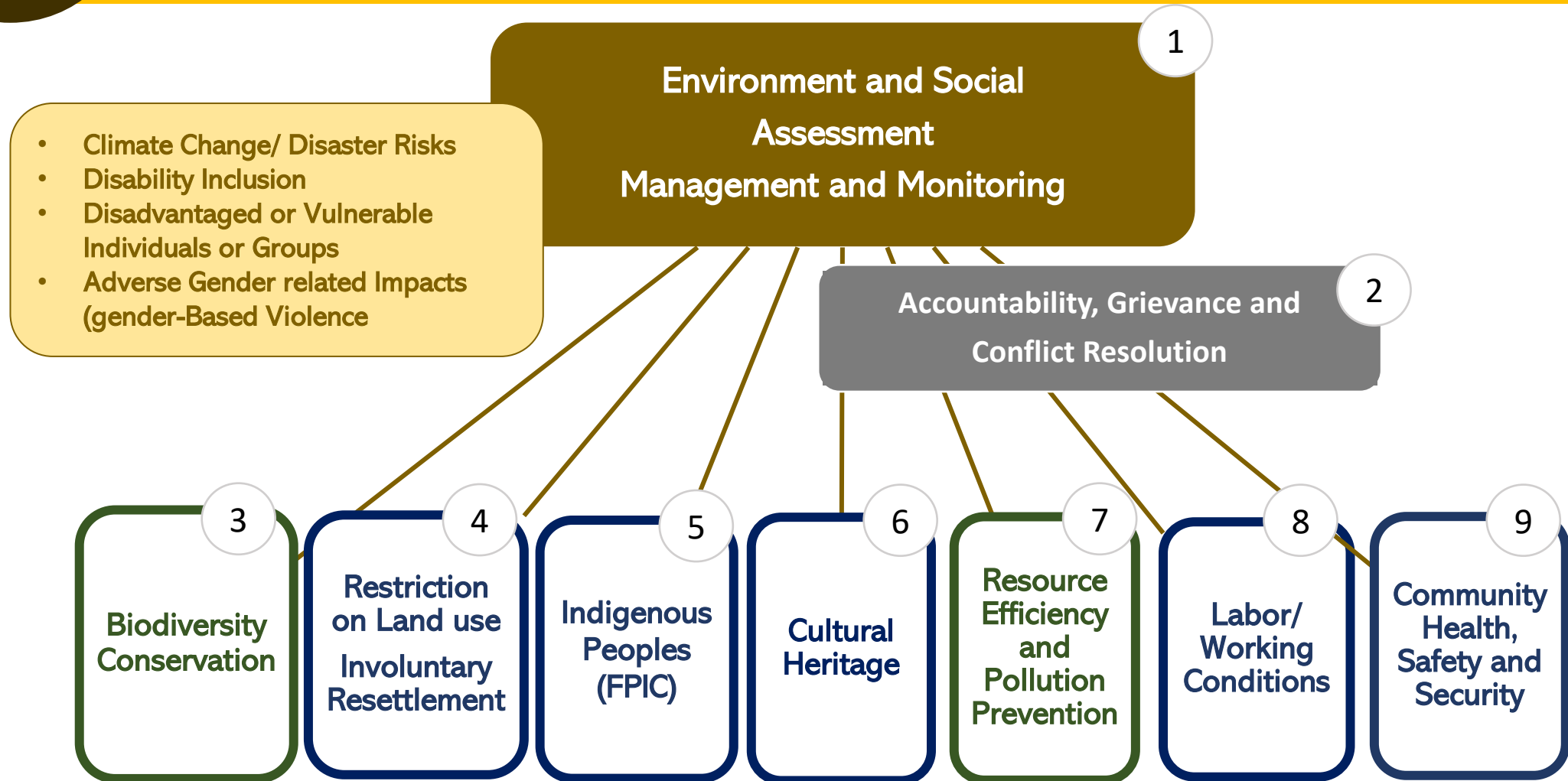
# GEF's Policy and Guidelines on Environmental and Social Safeguards

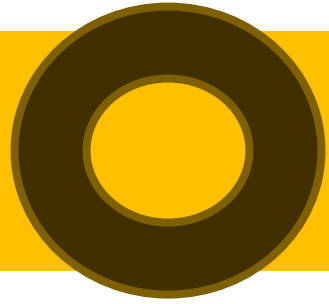
- Anticipate social and environmental risks and impacts
- Plan to avoid or mitigate risks and impacts
- Manage and monitor implementation
- Respond to issues as they arise





# GEF's Policy and Guidelines on Environmental and Social Safeguards





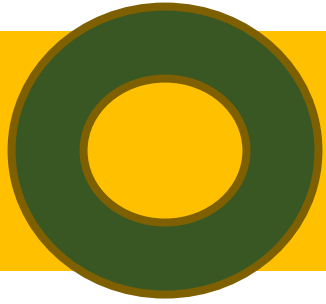
- Screen project to identify environmental and social risks
- Disclose relevant documents and inform/consult stakeholders
- Define preliminary project risk rating
- Describe information on the types of risks
- Provide any early screening reports and plans to address identified risks

- Assess environmental and social risks and potential impacts
- Disclose relevant documents and inform/consult Stakeholders
- Provide overall project or program risk rating
- Describe types of risks and risk ratings
- Provide any assessment reports

- Supervise the implementation of environmental and social management measures
- Monitor environmental and social risks and any revisions to identified risks
- Report on implementation of management measures

## ESS Project Requirements

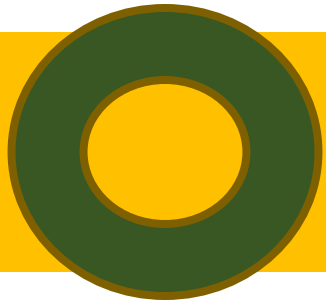
## GEF Agency Responsibilities



## Stakeholder Engagement

GEF's Operational Policies “*shall provide for full disclosure of all non-confidential information, and consultation with, and participation as appropriate of, major groups and local communities, throughout the project cycle.*”

*(Paragraph 5 of GEF Instrument)*



# Stakeholder Engagement

## Objective

Promote inclusive and meaningful participation of stakeholders

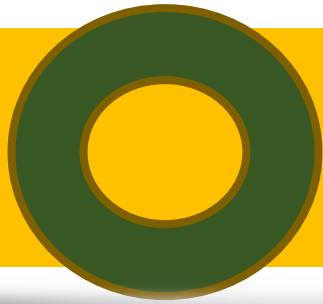
GEF POLICY ON  
Stakeholder  
Engagement

## Principles

- Constructive, responsive, accountable and transparent
- Fair, balanced, and inclusive participation
- Sustained commitment and action
- Supported by appropriate documentation and information

Increasing transparency, accountability, integrity, effectiveness and sustainability of GEF projects and programs

Reducing risks and addressing social and economic needs of affected parties and stakeholders



## Stakeholder Engagement Requirements

- Provide a description of any consultations conducted during project development
- Provide information on how Stakeholders will be engaged and means of engagement throughout the project cycle

- Provide Stakeholder Engagement Plans (SEP) or equivalent documentation
  - *Stakeholders who have been and will be engaged*
  - *means of engagement*
  - *dissemination of information*
  - *roles and responsibilities*
  - *resource requirements*
  - *timing of engagement*

- Report progress, challenges and outcomes of the implementation of stakeholder engagement

# Gender Equality



## The Policy

- A catalyst for gender-responsive approaches in environmental projects
  - Women are PARTNERS and beneficiaries
  - Gender inequalities are addressed
- Minimum requirements in project design

## MEAs

- With gender action plans; gender-specific targets and mandates

## Gender Equality – Environmental action

- Mutually-supportive; win-win; co-benefits

## Report

- Agencies reports on projects; GEF Sec reports to Council

# Gender Equality

Guidance to Advance Gender Equality  
IN GEF PROJECTS AND PROGRAMS

PIF & PFD

CEO Endorsement

Reporting

- ✓ Incorporation of gender perspectives in the project description and relevant project components
- ✓ Confirmation that project will comply with gender policy requirements

- ✓ Detailed gender analysis; gender action plan
- ✓ Gender-responsive measures for each project component
- ✓ Gender-sensitive indicators, sex-disaggregated targets

- ✓ Information in PIRs, MTRs, TEs progress on gender-sensitive indicators, results
- ✓ Share good practice, methodologies; lessons learned

# 100% of Projects : with gender analysis / assessment



- GEF Secretariat
  - Policy instruments
  - Leadership, Gender specialist, thematic experts
- Governments
  - Guidance, mandate through the Council
  - Work of national steering committees, OFPs
- Implementing agencies
  - Compliance with agencies' own policies & standards, and GEF's policies
  - Building their teams' expertise over time
- CSOs, other non-state stakeholders
  - Proactivity
  - Active engagement throughout
- MEAs
  - Stronger integration of gender issues/gender action plans
  - Requests for support to the GEF in some cases





# KNOWLEDGE MANAGEMENT Requirements & Lessons learned

POLICY FRAMEWORK

# GEF's Knowledge & Learning Objectives



**1. Improve quality and impact** of GEF funded projects and programs

**2. Inform policy dialogues and enhance policy coherence,** at global, regional and national levels

Agencies have a key role towards success in both areas.

**Our Mission: Reverse Global Environmental Degradation**

KM&L is a collaborative, partnership-wide effort – **All Hands on Deck** – All GEFSEC teams facilitate & support KM&L.

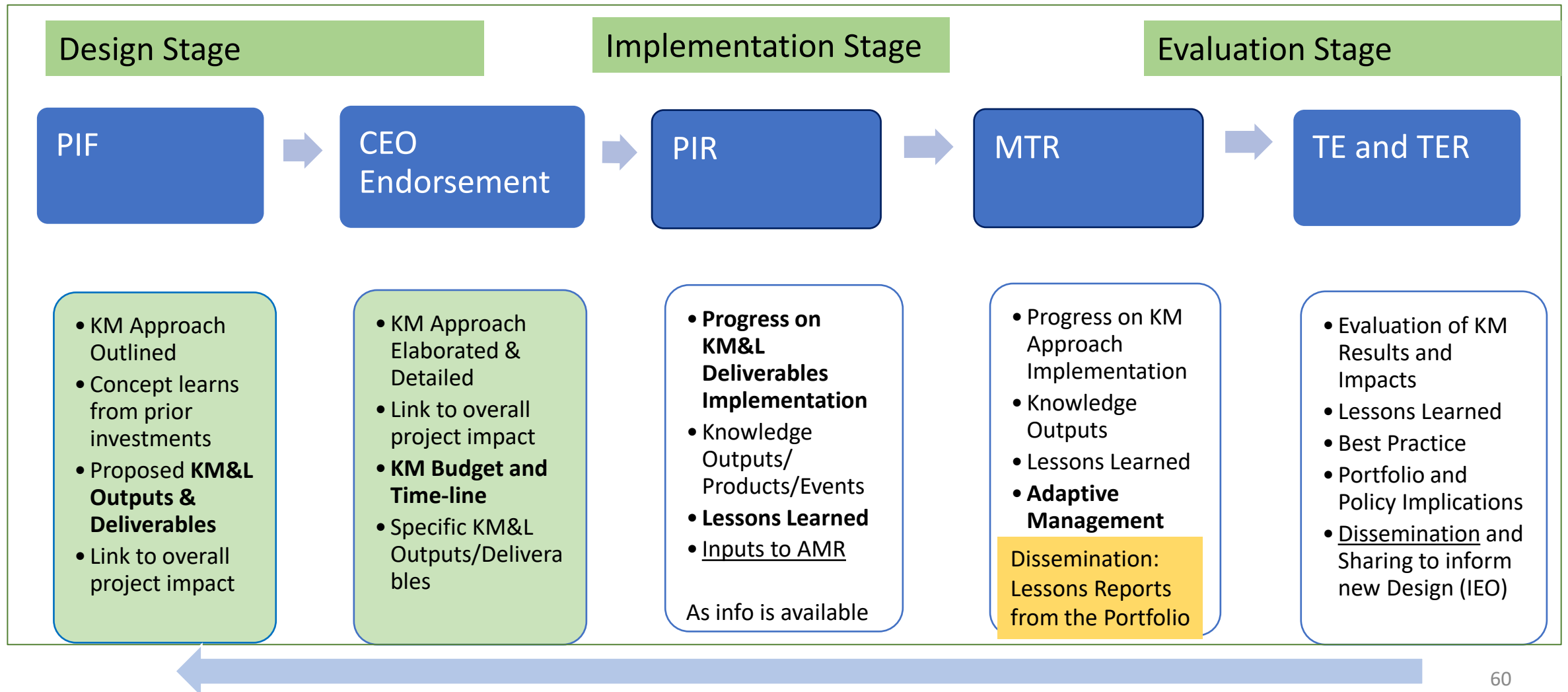
# ENHANCING KNOWLEDGE AND LEARNING IN GEF PROJECTS/PROGRAM



- 1** An overview of existing lessons and best practice that inform the project/program concept
- 2** Plans to learn from relevant projects, programs, initiatives & evaluations
- 3** Processes to capture, assess and document info, lessons, best practice & expertise generated during implementation
- 4** Tools and methods for knowledge exchange, learning & collaboration (at both program & project levels), including knowledge platforms and websites
- 5** Knowledge outputs to be produced and shared with stakeholders (at both program & project levels)
- 6** A discussion on how knowledge and learning will contribute to overall project/program impact and sustainability
- 7** Plans for strategic communications
- 8** Budget and timelines for KM Approach implementation/delivery (required at CEO endorsement stage)

# GEF Project/Program Cycle – KM&L Expectations/Flow

*Using, Generating, Capturing and Sharing Knowledge - FSPs and IPs/Child Projects*



# Enhancing Knowledge Exchange Across the Partnership

## GEF Corporate KM&L Toolbox



### Capture, Store & Access:

GEF Portal  
GEF Kaleo  
GEF Geo-map

### Knowledge Exchange:

Regional ECWs, Country Dialogue  
Workshops, CSO Forums, etc.

South-South Exchanges

GEF Knowledge Days – site visits

Pilot Knowledge and Collaboration  
Platform (KCP) for GEF Focal Points

GEF Presentations/Side Events at  
COPs, etc.

Agency Retreats

GEF Gender Partnership

GEF BBLs

### Reporting:

GEF Score Card  
Annual Monitoring Report  
Country Fact Sheets  
GEF Reports to Conventions

### Dissemination:

GEF Website

GEF Publications and Videos

Good Practice Briefs

Social Media Tools (Blogs,  
Twitter, etc.)

GEF Booths at COPs and  
other events

### Training & Capacity Building:

GEF Academy E-courses

Art of Knowledge Exchange  
Guidebook and Workshops

Targeted Workshops (GEF Intro  
Seminar, etc.)

Internal Training Events

# Enhancing Knowledge Exchange Across the Partnership

## GEF Corporate KM&L Toolbox



### IT-based GEF Systems:

- GEF Website
- GEF Portal
- GEF Kaleo
- GEF Geo-map
- GEF Academy E-courses
- Pilot Knowledge and Collaboration Platform (KCP) for GEF Focal Points
- Social Media Tools (Blogs, Twitter, etc.)

Project level: IP Platforms  
and GEF Project Websites

### Person to Person Exchanges:

- Targeted Workshops (GEF Intro Seminar, Regional ECWs, Country Dialogues, Constituency Meetings, CSO Forums, IPs, etc.)
- South-South Exchanges
- GEF Knowledge Days – site visits
- GEF Presentations/Side Events at COPs, etc.
- Agency Retreats
- GEF Gender Partnership
- GEF BBLs
- Internal Training Events
- GEF Booths at COPs and other events

Project Level: Knowledge Exchange  
Activities

### Knowledge Products:

- Good Practice Briefs
- GEF Score Card
- Country Fact Sheets
- Annual Monitoring Report
- GEF Reports to Conventions
- Art of Knowledge Exchange Guidebook and Workshops
- GEF Publications and Videos

Project Level: Knowledge Products  
and other knowledge outputs

STAP and IEO knowledge  
products and events

# Partnership-wide KM&L Survey (Feb-Mar 2022)

## Findings & Recommendations for GEF 8

### Findings:

- There is **appreciation** of existing GEF knowledge sharing and learning efforts; but there is **uneven awareness** of some KM&L tools and products.
- The GEF Website is the go-to place for GEF information; but it could be more user friendly and provide access to more in-depth knowledge products, more up-to-date project data, more detailed technical information as well as links to GEF project websites and agency platforms.

### Recommendations:

1. Raise **awareness** of K&L tools/products that the GEF already has; including GEF Kaleo, IP platforms and project websites.
2. Enhance quality and improve **flow and accessibility** of existing GEF corporate KM&L tools, products, methods, activities and platforms.
3. Invest **more corporate resources** into KM&L governance, coordination and implementation capacity at the GEF Secretariat.
4. Focus on identifying/sharing **lessons and good practice** from GEF investments.
5. Utilize **MTRs** as a learning tool; enhance **AMRs** to discuss lessons and good practice.
6. Prepare clear **guidance and training** around KM&L products, tools, and methods that are especially effective for project level.
7. Create **incentives** to better codify and share knowledge across the GEF partnership.
8. Be more **realistic** about **expectations** around KM&L for the GEF partnership as capacity is a limiting factor.
9. Build **shared understanding & develop capacity** among key GEF stakeholders around good knowledge and learning outcomes for GEF funded projects/programs to enhance their impact and sustainability.



# Near Term / Ongoing KM&L Actions in GEF 8

- **IP Workshops** - regional
- GEF Website
- GEF Portal
- **GEF Kaleo – internal process enhancement and external marketing**
- Art of Knowledge Exchange
- **GEF Academy (e-courses) – update for GEF 8**
- GEF Knowledge Days – with site visits
- South-South Exchange Webinars
- **Pilot GEF KCP – Knowledge and Collaboration Platform for GEF Focal Points**
- GEF Technical BBLs
- GEF Trainings on Operational Issues
- **Good Practice Briefs**
- **Pilot Learning Missions to GEF Projects under Implementation**
- GEF Booths, Pavilions, Presentations and Side-events at International Events
- **Lessons Learned Reports based on MTR submissions**
- GEF Reports to Conventions
- **Options for connecting GEF knowledge systems to existing global platforms**
- GEF Publications
- GEF Communications Products: News, Stories, Multimedia, Blogs, Social Media Feeds, etc.
- **KM&L Guidelines and Training for Agencies**
- Other....





# Screen break 10 mins



gef

GLOBAL ENVIRONMENT FACILITY  
INVESTING IN OUR PLANET



# Questions?



gef

GLOBAL ENVIRONMENT FACILITY  
INVESTING IN OUR PLANET



Introduction Seminar  
February 2023

**Pathways to an  
equitable,  
nature-positive,  
carbon neutral and  
pollution free world  
beyond COVID-19**

**GEF-8 PROGRAMMING  
OVERVIEW**



PRESENTATION  
AGENDA

**Context for GEF-8**

**GEF-8 strategy and  
programming directions**

**Integrated Programs**

**Focal Areas**

**Q and A**

# GLOBAL RESPONSES AND COMMITMENTS

to seek bold results by  
2030 and beyond

Commitments by countries representing ~45% of the world's emissions to achieve **carbon neutrality** by 2050

Sustainably manage 100% of the **ocean** area under national jurisdiction by 2025

Commitment to prevent, halt and reverse the **degradation of ecosystems** - 350 million hectares of degraded landscapes into restoration

High ambition coalition commitment to bring 30% of **land and oceans** under protection

Phase out **POPs** controlled by the Stockholm Convention with time bound phase out dates during the period 2025 – 2036

Develop the Task Force on Nature-related **Financial Disclosures**

Phase out of **mercury** in products and industrial process by 2025



**Calls for a GEF-8 Strategy that is**

*systemic and  
transformational and  
responds to urgency  
of raising ambition*

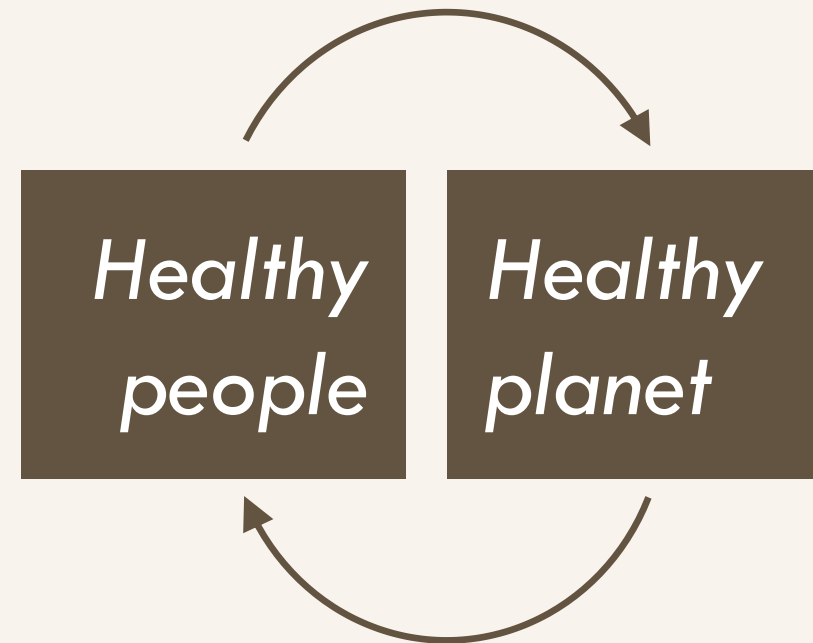


**A longer-term vision for the GEF**

*To halt nature loss and ensure that the world is nature-positive by 2030 and carbon neutral and pollution-free by 2050*



## GEF-8 embracing a post-COVID-19 framework



*...protecting nature and restoring health of the environment that can and needs to underpin the health and well-being of human societies.*



# GEF-8 FOCUS ON INTEGRATION FOR IMPACT AND SCALE

## *Pathway to Transformative Change for Blue and Green Recovery*

*Country projects and portfolios should focus on maximizing these characteristics:*

### **Integration of actions across sectors, focal areas, or drivers**

Address drivers of environmental degradation at global or regional scales;

Avoid leakage and promote policy coherence

Work across scales and sectors

### **Transformative Investments**

Promote greater private sector engagement;

Innovate and take measured risk for higher return

### **Ensure Durable Outcomes**

Design for resilience in the face of uncertainty

Build Institutional and financing to sustain impact

# GEF-8: HEALTHY PLANET, HEALTHY PEOPLE

*Unified action towards 2030 Goals and Commitments*

## FOCAL AREAS

Biodiversity

Climate change mitigation

Land degradation

International waters

Chemicals and waste

## INTEGRATED PROGRAMS

Food Systems

Ecosystem Restoration

Sustainable Cities

Amazon, Congo, and Critical Forest Biomes

Circular Solutions to Plastic Pollution

Blue and Green Islands

Clean and Healthy Ocean

Greening Transportation Infrastructure Development

Net-Zero Nature-Positive Accelerator

Wildlife Conservation for Development

Elimination of Harmful Chemicals from Supply Chains

## GLOBAL PROGRAMS

Mobilizing the Financial Sector for Environmental Goals through Blended Finance

Community Action for Global Transformation - Small Grants Program and Beyond

## CROSS-CUTTING

Circular economy • Nature-based solutions • Gender responsiveness • Resilience • Private sector engagement



# INTEGRATED PROGRAMS

GEF-8



# GEF-8 INTEGRATED PROGRAMS

## *Pathway to Transformative Change for Blue and Green Recovery*

*Integrated programs are defined by sharing several of the following characteristics:*

1

**Integration** of focal areas and approaches

2

Deliver **multiple** global environmental benefits

3

Complement country-level investments with **transboundary** action and impact at regional or global scales

4

Promote a global **platform** for coordination and technical support to country projects

5

Provides incentives for **country** participation

6

Delivers more **outcomes** than individual projects on same topic

# GEF-8 Amazon, Congo, and Critical Forest Biomes IP

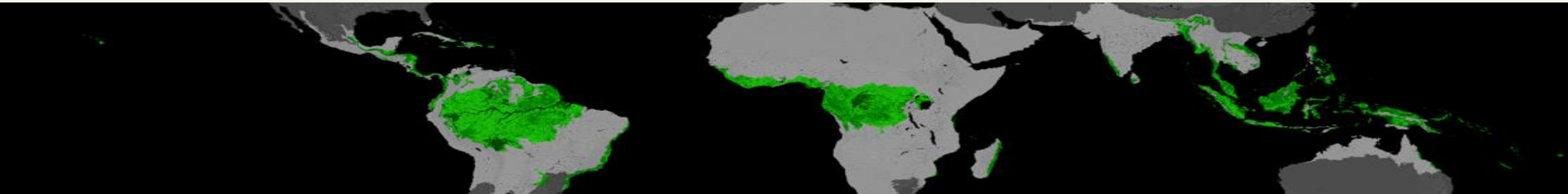
**Goal:** Maintaining the integrity of the globally important tropical forests

**Objective:** Conservation of the last and globally important primary tropical forests

**Priorities** on Amazon, Congo, and other Critical Forest Biomes

**Multiple levels of intervention** with a focus on Jurisdictional / landscape level with a mix of institutional and incentive tools to protect primary forests and reduce the pressures in the landscape:

- Expand, strengthen the management of protected areas + OECM beyond PAs
- Develop enabling conditions (governance, policies, law, ILUP...)
- Alternative and improved livelihood
- Catalyze multi-stakeholder engagement at different levels to enable transformational changes
- Resource mobilization: Develop/catalyze finance and other incentives for forest protection while eliminating perverse incentives (PES...)
- Empowerment of IPLCs
- Regional cooperation, incl. support for coordinated management with neighboring countries (corridors)



# Wildlife Conservation for Development Integrated Program (WCD IP)

## Goal

*Conserve wildlife and landscapes by transforming the drivers of species loss and ensuring that countries and communities are benefiting from these natural assets.*

## Objectives

**Increase wildlife populations and the ecological connectivity and integrity of wildlife landscapes**

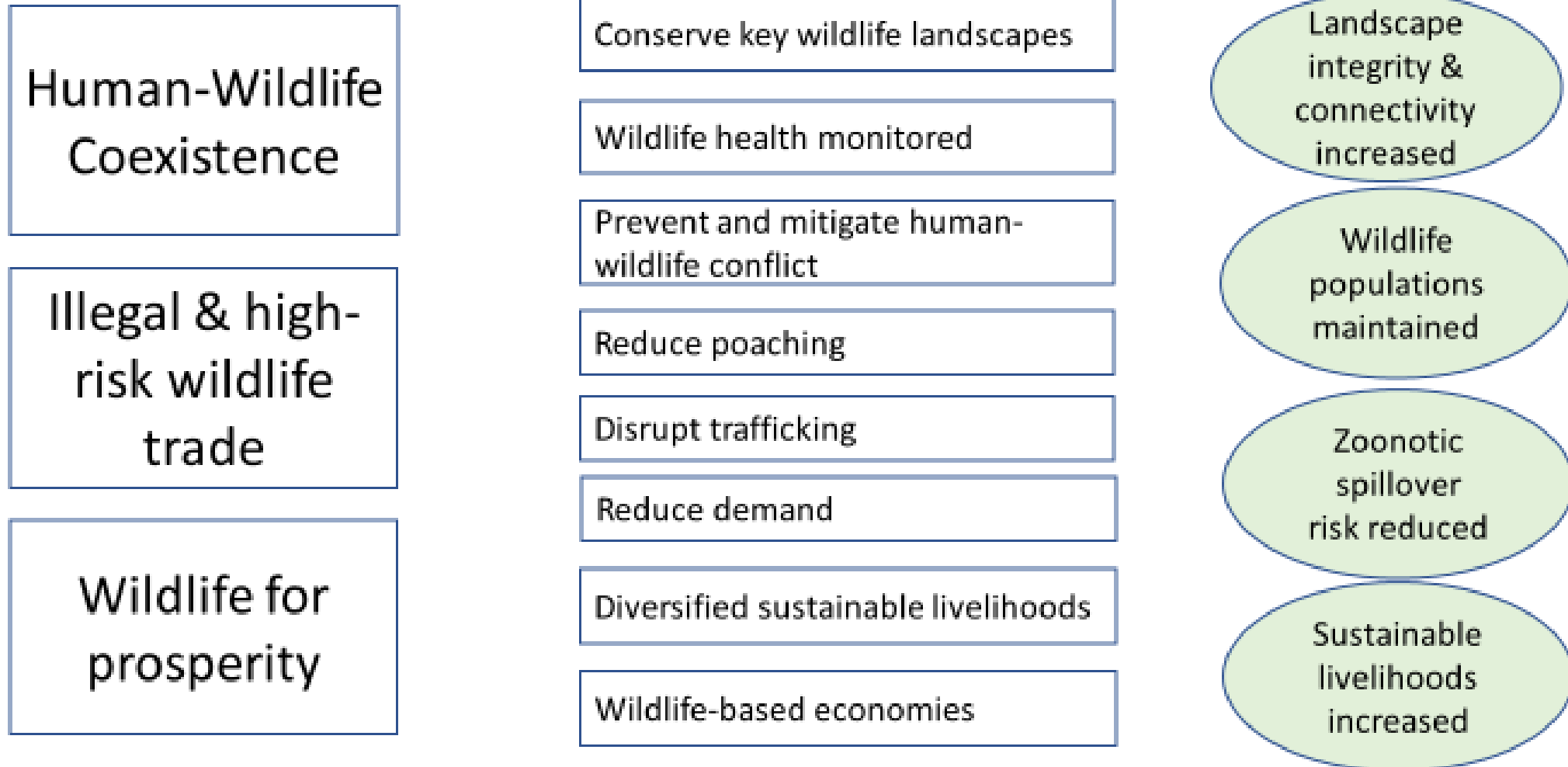
**Reduce the risk of zoonotic spillover**

**Increase sustainable benefits from wildlife and landscapes**



***Secure wildlife populations and landscapes for the benefit of people & planet***

Healthy Planet, Healthy People



Cross-cutting: Social and behavioral change, knowledge management, gender, indigenous people and local communities

# Food Systems Integrated Program

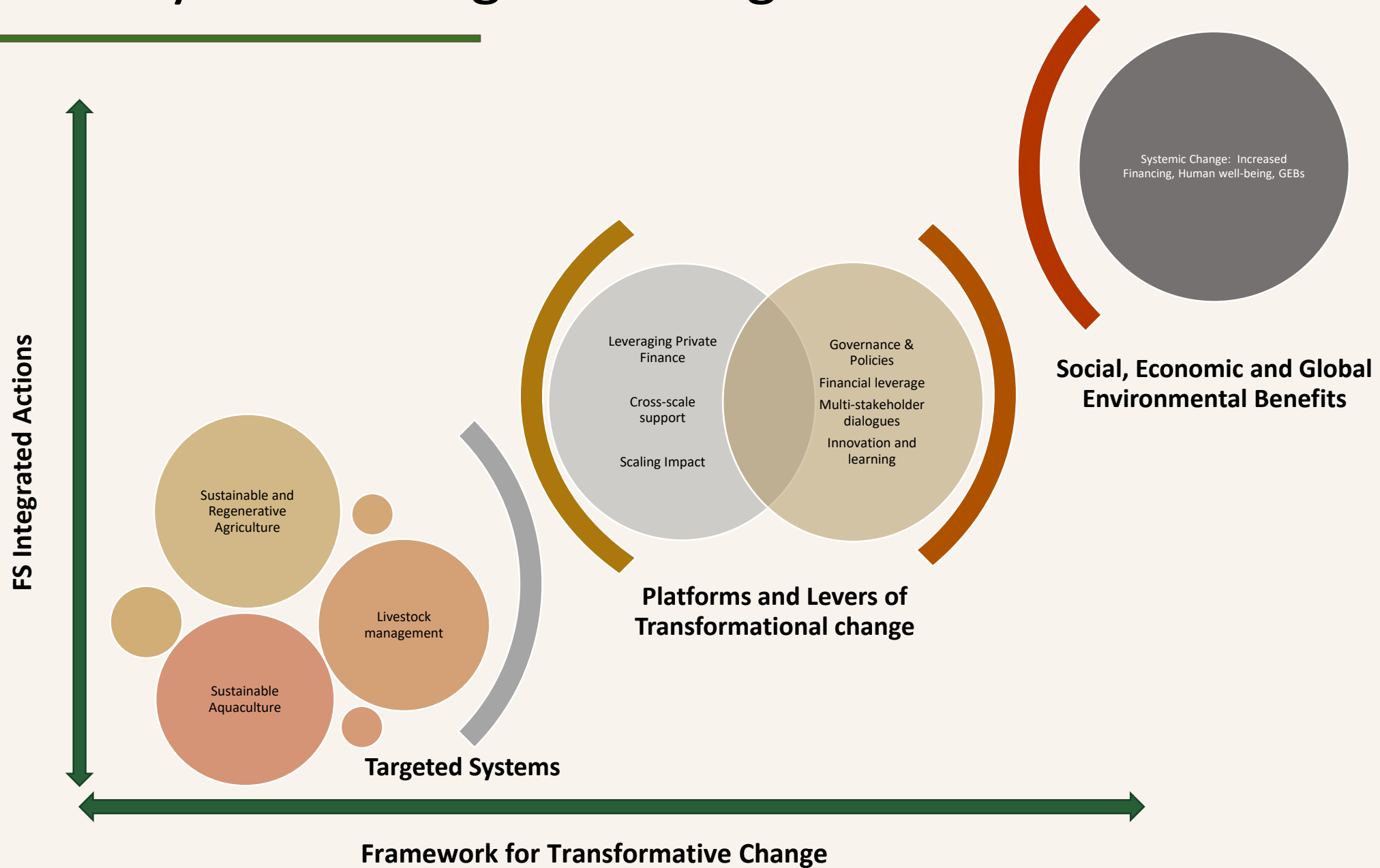
---

- The **Goal** of the FS Integrated Program is to **catalyze the transformation to sustainable food systems** that are nature positive, resilient, and pollution-reduced
- The IP will seek to reduce environmental degradation and negative externalities in food **production systems** and on the demand side across **supply chains**
- Priorities and Focus for Transformative Change : Livestock Systems; Sustainable & Regenerative Agriculture; Aquaculture
- **Contributions to MEAs:** major contributions to all 3 Rio Conventions and the IW FA GEBs





# Food Systems Integrated Program



# Ecosystem Restoration Integrated Program

*Goal: Achieve healthy and resilient ecosystems to foster green recovery and secure livelihoods*

**Objective: Generate multiple environmental and socio-economic benefits by restoring degraded landscapes through an integrated approach**

**Approach: Technical assistance interventions complemented by programmatic support for policy, catalyzing finance, multi-stakeholder platforms, and private sector engagement**



=> Multi-objective and multi-criteria selection of landscapes for major contributions to all 3 Rio Conventions

# Net-Zero Nature-Positive Accelerator Integrated Program



## Overarching Goal:

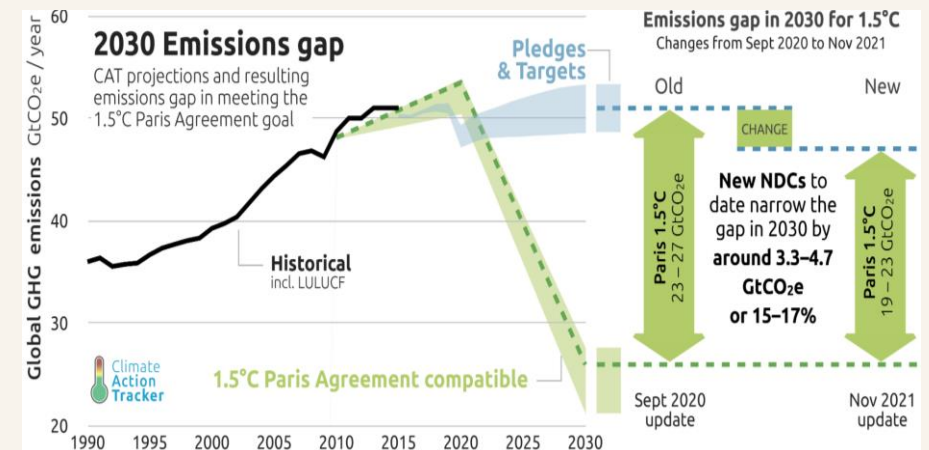
***To accelerate implementation of nature-positive, net-zero pathways by investing in nature and new technologies.***

**The IP will support countries reaching their ambitious net-zero goals by 2050, close the gap that currently exist between the current climate plans and the Paris Agreement targets.**

**The IP will also support the goals of the CDB and the CCD by ensuring that climate mitigation policies are also fostering biodiversity conservation and land degradation goals.**

## Specific Objectives:

- Support the adoption of net-zero long-term strategies and policies that are coordinated with national biodiversity and land degradation strategies.
- Promote to the effective integration of the climate and nature agendas at the national and global level.
- Invest in NZNP-aligned pipelines of projects that generate multiple global environmental benefits.
- Support the development of robust data systems to monitor progress towards NZNP targets.



# Blue and Green Islands Integrated Program

The **goal** is to demonstrate the transformational potential of incorporating the value of nature into decision-making

**and**

using innovative Nature-based Solutions (NbS) to achieve development and MEA goals and address SIDS challenges related to food security, climate change mitigation and adaptation and reduction and of hazardous chemical pollution.

The **objective** is to *reduce ecosystem degradation and facilitate nature-positive development*, by applying Nature-based Solutions in key ecosystems that support socio-economic development in SIDS, with specific application to the *food, tourism and urban sectors*.



# Greening Transportation Infrastructure Development Integrated Program (GRID)



## **Goal**

*Enable countries to meet transportation infrastructure needs and the economic and social benefits critical to achieving the SDGs and Paris Agreement goals.*

## **Objective**

Enable countries to develop portfolios of transportation infrastructure projects that build in sustainability from inception.

## GRID Upstream Approach

---

Improve **infrastructure-related planning, regulatory, financial, and institutional and management frameworks** geared to the differential needs of countries and landscape specificities.

---

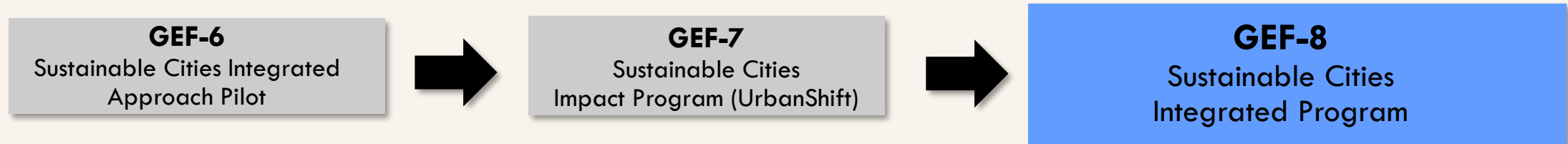
Framework elements will include whole-life costs, resilience, and other elements deemed essential for a well-operating transportation infrastructure industry ***and*** for embedding sustainability into infrastructure development from inception.

## GRID Downstream Approach

At the country and landscape/seascape scale, the program will simultaneously target three key areas:

- Improve the **policy enabling environment for decision-making and investing** in the delivery of transportation infrastructure services through integrated and sustainably engineered approaches.
- Strengthen **integrated, multisectoral, and participatory upstream planning and design**.
- Enhance **financing and de-risking mechanisms** for delivery of sustainably engineered approaches to providing transportation infrastructure services.

# Sustainable Cities Integrated Program



**Goal: Advance integrated and systems-based approaches towards building net-zero carbon, nature-positive, inclusive and climate resilient cities.**

## **GEF-8 Ambitions and Priorities:**

- Enable sustainable urban transformation and raise cities' ambition aligned with global 2030 goals.
- Accelerate adoption of integrated approach to include nature and circularity principles for action on climate, biodiversity, and chemicals and waste.
- Support solutions and partnerships that enable increased flow of investments to cities for implementation of sustainable solutions and global green recovery.
- Promote a people-centric approach to integrate gender, health, and inclusion.



# Strategic Priorities



## Integrated land use planning and governance

- Support institutional coordination and collaboration between sectors
- Develop integrated spatial plans



## Integration of nature in urban development

- Support enabling policy and regulatory environment to bring nature into cities
- Demonstrating urban Nature-based Solutions



## Decarbonization of the built environment

- Development of plans, policies, and strategies for decarbonization
- Catalyze investments in urban infrastructure, such as buildings, energy, waste and transportation.



## Circular economy approaches

- Support policies and physical infrastructure
- Focusing on building materials, water and waste management, urban food systems, plastics, and industries



## Innovative financing

- Financing models to increase flow of finance to cities
- Collaboration with financial institutions and the private sector



# Circular Solutions to Plastic Pollution IP



# Circular Solutions to Plastic Pollution IP

**Goal:** catalyze circular economy approaches to reduce plastic production, consumption and disposal

## Objectives:

- **eliminate unnecessary plastic products**, shift to sustainable materials
- **innovate for circularity** by designing for extended life (reuse, refill, repair, rent, repurpose) and for recycling
- **circulate products** by shifting consumer behavior, by improving recycling systems, and by fostering markets for recycled material
- **create cross-cutting enabling conditions** through coordination along the plastic value chain





# Clean and Healthy Ocean Integrated Program

## Goal:

*To contribute to a sustainable blue economy by curbing the inflow of land-based-pollution into the coastal environment, thereby advancing the ecological, social, and economic well-being of countries situated along the coasts of the world's Large Marine Ecosystems.*

## Objective:

---

The objective of this Integrated Program is to address hypoxic zones by curbing coastal pollution from agricultural, industrial and municipal sources through policy and regulatory measures and infrastructure investments combined with Nature Based Solutions.

## Two-prong Approach:

-  A global multi-stakeholder platform
-  Significantly scale-up action in LMEs



# Eliminating Hazardous Chemicals from Supply Chains Integrated Program

## Goal:

To significantly reduce or eliminate the environmental degradation of globally significant supply chains



## Objectives:

- Enable the greening of supply chains.
- Enable zero pollution and zero waste, nature based and carbon neutral supply chains.

Focus: Fashion and Construction



# FOCAL AREAS

Sri Lanka

**GEF-8**

# BIODIVERSITY

## GOAL

*Globally significant biodiversity conserved, sustainably used, and restored.*

## Major objectives

To improve conservation, sustainable use and restoration of natural ecosystems.

To effectively implement the Cartagena and Nagoya protocols.

To increase mobilization of domestic resources for biodiversity.

## Major contributions to GEBs and MEAs

Comprehensive implementation support for the Global Biodiversity Framework

Integrated landscape/seascape management.

Domestic resource mobilization.



# LAND DEGRADATION

## GOAL

*To avoid, reduce, and reverse land degradation, desertification and mitigate the effects of drought.*

## Major objectives

Sustainable land management.  
Landscape restoration.  
Address Desertification, Land Degradation and Drought (DLDD), particularly in drylands.  
Improve the enabling policy and institutional framework for LDN.

## Major contributions to GEBs and MEAs

Specific objective on addressing DLDD issues.  
Increased emphasis on land-based interventions for drought mitigation.



# CLIMATE CHANGE

## GOAL

*Support developing countries to make transformational shifts towards net-zero GHG emissions and climate-resilient development pathways.*

## Major objectives

- 1. Innovation, technology transfer, and enabling policies** for mitigation options with systemic impacts.
  - 1.1. Accelerate the efficient use of energy and materials.*
  - 1.2. Enable the transition to decarbonized power systems.*
  - 1.3. Scale up zero-emission mobility of people and goods.*
  - 1.4. Promote Nature-based Solutions with high mitigation potential.*

---

- 2. Enabling conditions to mainstream mitigation concerns** into sustainable development strategies.
  - 2.1. Support capacity-building needs for transparency under the Paris Agreement through the CBIT.*
  - 2.2. Support relevant Convention obligations and enabling activities.*



# INTERNATIONAL WATERS



## GOAL

*Supporting nations in transboundary cooperation in shared marine and freshwater ecosystems*

## Major objectives

Accelerate joint action to support Blue Economic Development.

Advance management in the Areas Beyond National Jurisdiction (ABNJ).

Enhance water security in freshwater ecosystems.

## Major contributions to GEBs and MEAs

Increased focus on Implementation of Strategic Action Programs.

Enhanced support to joint action on sustainable Blue Economic Development.

Advanced attention to food, water and ecosystem security through a nexus approach.

# INTERNATIONAL WATERS



## GOAL

*Supporting nations in transboundary cooperation in shared marine and freshwater ecosystems through 3 step process:*

- *Assess ecological & socioeconomic conditions*
- *Agree on a regional strategic action program (SAP)*
- *Implement the SAP*

## Major objectives

Support **Large Marine Ecosystems** to accelerate Blue Economic Development.

Advance management in the Areas Beyond National Jurisdiction (**ABNJ**).

Enhance water security in **freshwater** ecosystems.

## Major contributions to GEBs and MEAs

### GEBs:

New or improved marine protected areas (**MPAs**)

More sustainable **fisheries** and aquaculture

Reduced **pollution**, including from wastewater, agricultural run-off and plastics

Strengthened **collaboration** among countries with shared water body

### MEAs:

Beyond Biodiversity National Jurisdiction Treaty

Plastic Pollution Reducing Treaty

# CHEMICALS AND WASTE

## GOAL

*Prevent pollution from harmful chemicals and waste particularly POPs and Mercury.*

## Major objectives

Policy reform to cleaner chemistry and eliminate existing waste.

Preventing a future build up of harmful chemicals and waste in the environment.

Eliminating harmful chemicals and waste in current waste streams and that are stockpiled in existing infrastructure and processes.

## Major contributions to GEBs and MEAs

Focus on gaps preventing sound management and to prevent a future buildup of chemicals in the environment

Harmonized approaches across jurisdictions to allow transparency in supply chains



**CARBON-NEUTRAL**

**POLLUTION-FREE**

**CLIMATE CHANGE MITIGATION**

- GHG Emissions avoided or reduced
- Carbon stocks sequestered
- Carbon stocks secured

**CHEMICALS AND WASTE**

- Hazardous chemicals eliminated
- POPs / mercury reduced or eliminated

**Ecosystem Restoration**

**Food Systems**

**Net-Zero Nature-Positive Accelerator**

**Blue and Green Islands**

**Circular Solutions to Plastic Pollution**

**Clean and Healthy Ocean**

**Sustainable Cities**

**Elimination of hazardous Chemicals from Supply Chains**

**LAND DEGRADATION**

- Area of habitats and landscapes restored
- Area under sustainable management increased

**Amazon, Congo and Critical Forest Biomes**

**Wildlife Conservation for Development**

**Greening Transportation Infrastructure Development**

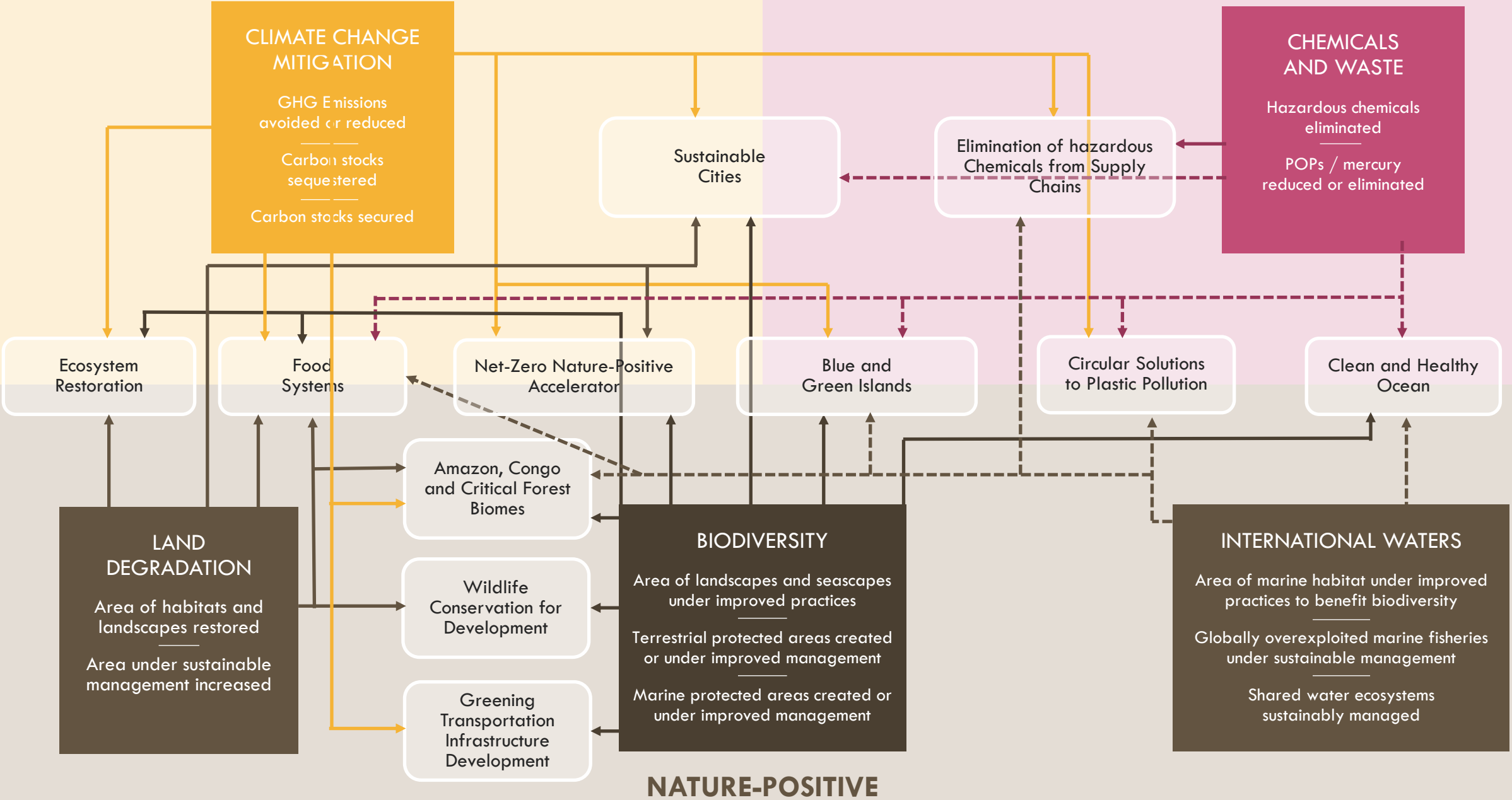
**BIODIVERSITY**

- Area of landscapes and seascapes under improved practices
- Terrestrial protected areas created or under improved management
- Marine protected areas created or under improved management

**INTERNATIONAL WATERS**

- Area of marine habitat under improved practices to benefit biodiversity
- Globally overexploited marine fisheries under sustainable management
- Shared water ecosystems sustainably managed

**NATURE-POSITIVE**





**Pathways to an  
equitable,  
nature-positive,  
carbon neutral and  
pollution free world  
beyond COVID-19**

## **GEF-8 OVERVIEW**