

GEF Introduction Seminar 2023



NOVEMBER 20-22, 2023

[Thegef.org](https://www.thegef.org) | [Facebook](#) | [Twitter](#) | [YouTube](#)



AGENDA

November 20

- Governance
- Partnership
- Communication

November 21

- Funding
- Programming
- Operations
- Monitoring & Results

November 22

- Civil Society
- Small Grants Program
- Policy Framework
- *Survey & Group Photo*



* Please type questions in the chat

QR code: Agenda,
presentation &
reference materials,
survey, recording

GEF-8 INTERACTIVE GUIDE (Download file)

GLOBAL ENVIRONMENT FACILITY



GEF PARTNERSHIP
The GEF connects 185 governments with civil society, Indigenous Peoples, the private sector, and other environmental financiers.

[Explore](#)

GEF FUNDING
The GEF is the world's largest funder of biodiversity protection, nature restoration, pollution reduction, and climate change response.

[Explore](#)

STAR COUNTRY ALLOCATION
GEF 144 recipient countries have a STAR country allocation for Biodiversity, Climate Change, and Land Degradation in GEF-8 (July 1, 2022 to June 30, 2026).

[Explore](#)

GEF PROJECT CYCLE
GEF projects follow a time-bound cycle for technical and policy review before Council or CEO approval.

[Explore](#)

GEF POLICY FRAMEWORK
GEF projects must comply with a set of mandatory policy requirements.

[Explore](#)

GEF FOCAL AREAS
The GEF Focal Areas consist of Biodiversity, Climate Change Mitigation, Land Degradation, Chemicals & Waste, and International Waters.

[Explore](#)

GEF INTEGRATED PROGRAMS
GEF-8 11 Integrated Programs will deliver global environmental benefits across multiple focal areas.

[Explore](#)

GEF GOOD PRACTICE BRIEFS
The GEF Good Practice Briefs showcase successful project examples.

[Explore](#)

GEF FACTSHEETS
The GEF provides Country and Agency Factsheets as the portfolio management tools.

[Explore](#)

RESULTS & MONITORING
GEF projects use Core Indicators and a M&E system that underpin the GEF-8 Results Measurement Framework.

[Explore](#)

YOU ARE ON THE HOME PAGE

March 20, 2023

CREDITS



WHAT IS THE GEF?
MANDATE
GOVERNANCE

A GLOBAL PARTNERSHIP

Largest environmental multi-donor trust fund

Financial mechanism of international environmental conventions



18 AGENCIES

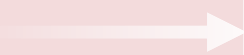


GOVERNANCE

GUIDANCE

CONVENTIONS

CBD
UNFCCC
UNCCD
Stockholm (POPs)
Minamata
BBNJ



COUNCIL

32 Constituencies



SECRETARIAT

INDEPENDENT
EVALUATION OFFICE

STAP

TRUSTEE

ACTION

185 member governments

COUNTRIES

Operational & Political Focal Points
Convention Focal Points
Civil Society Organizations
Indigenous Peoples
Private Sector

18 AGENCIES

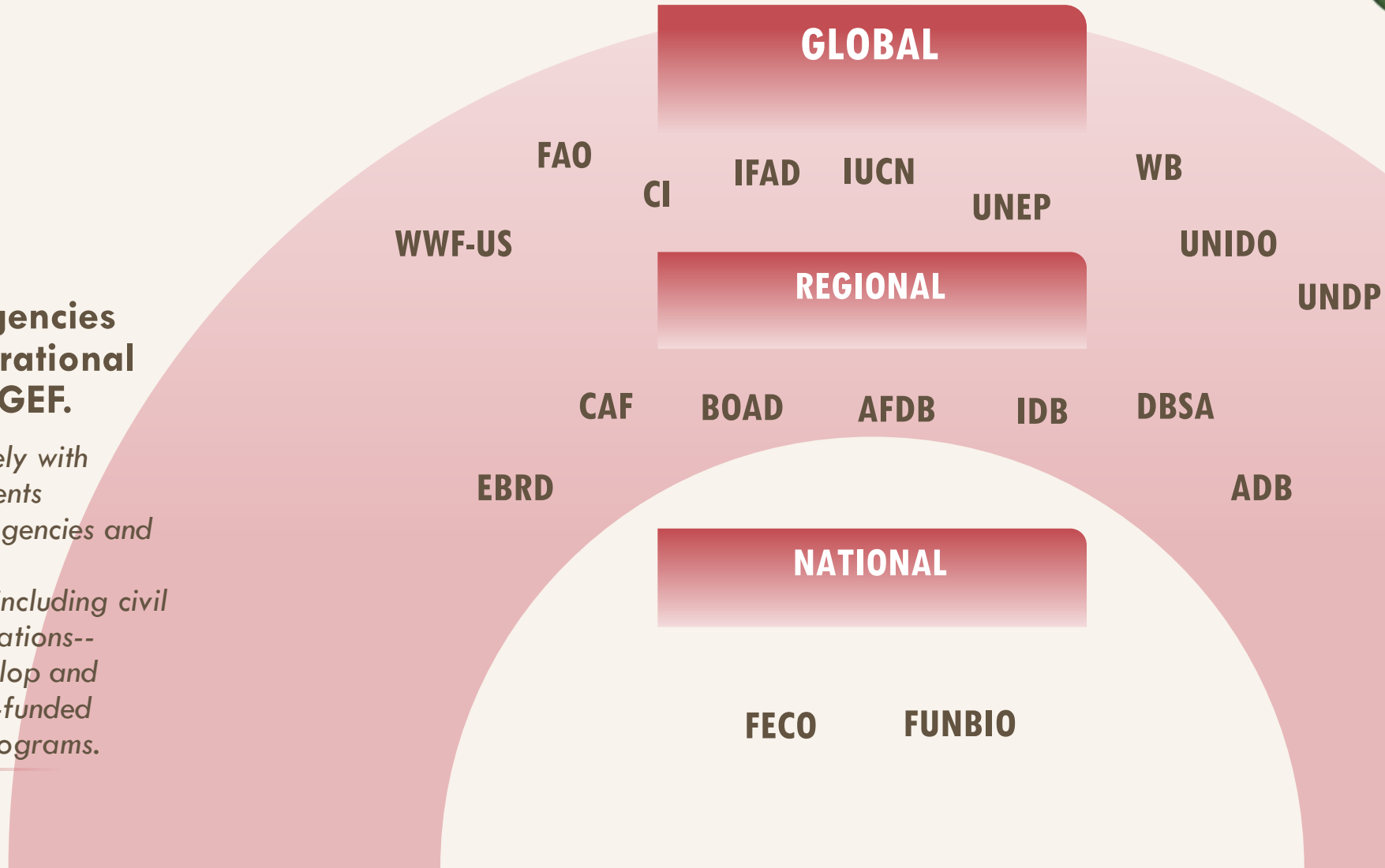
EXECUTING ENTITIES



18 GEF AGENCIES

The GEF Agencies are the operational arm of the GEF.

They work closely with project proponents --government agencies and other national organizations, including civil society organizations-- to design, develop and implement GEF-funded projects and programs.



FAMILY OF TRUST FUNDS

GEF Trust Fund



Serves CBD, UNFCCC, UNCCD, Minamata Convention, Stockholm Convention

LDCF-SCCF Trust Funds



Serves UNFCCC

GBF, Nagoya Trust Fund



Serves CBD

GEF-8 Resources

GEF Trust Fund

Started in 1991 with Pilot Phase and was Restructured in 1995

4-year

replenishment cycle from July 1, 2022 to June 30, 2026

\$5.33 billion

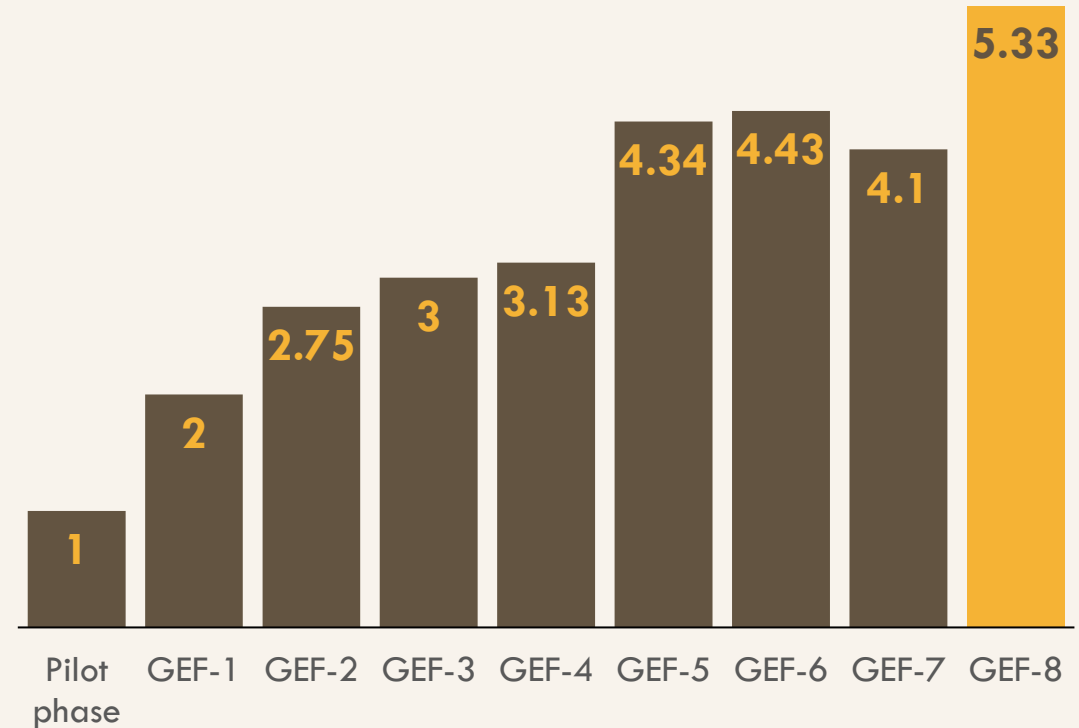
pledged by 39 donor nations

Country 'STAR'

allocation

GEF-8 strategy responds to conventions and takes an **integrated approach to systems transformation**

GEF Replenishment Cycles
(billion USD)





GEF- INTRO SEMINAR
NOVEMBER 20-22, 2023

**The GEF-8 Country
Engagement
Strategy**

Country Engagement Strategy GEF-8

The Country Engagement Strategy builds on the past three decades of GEF's work focused on empowering and supporting countries to achieve higher impact with GEF resources. It combines the activities of the very successful Country Support Program (CSP) with upstream engagement with countries.



Upstream Technical Meetings

Upstream Technical Dialogues will provide:

1. Technical and strategic support to GEF stakeholders and recipient countries to ensure the delivery of Global Environmental Benefits.
2. Technical upstream missions to present the GEF-8 Programming Directions, the Integrated Programs, and the Focal Areas Strategies in a more direct way.
3. Provide technical support to countries during portfolio development, project design, and project review to enhance the quality of projects at entry and ensure the strongest country portfolio that advances the GEF-8 Results Framework



National Dialogues

National Dialogues will convene all relevant national stakeholders in a country to jointly discuss and decide the programming of GEF resources and to promote policy coherence within each country. These National Dialogues on programming will complement the Upstream Technical Dialogues, as necessary.



GEF Workshops

GEF Workshops will include:

1. Expanded Constituency Workshops (ECWs)
2. Stakeholder Empowerment Series (SESs)
3. Thematic Workshops.



Introduction Seminars

Introduction Seminars will provide training and relevant information for an enhanced understanding of the GEF, its policies and operations to new Agency staff, Operational Focal Points, selected stakeholders as well as new Convention Secretariat staff. The Secretariat will organize two virtual Introduction Seminars a year.



Constituency Meetings and Pre-Council Meetings

Constituency Meetings and Pre-Council Meetings the main tool for Council Members and Alternates within a constituency to prepare for decision making at the GEF Council.



Financial Support to GEF OFPs

Financial Support to GEF Operational Focal Points will enable them to effectively oversee and monitor their GEF portfolio. Access to these dedicated funds is optional and flexible.



Knowledge Exchange and Learning

Knowledge Exchange and Learning. A GEF-wide Knowledge and Learning Strategy is currently being developed in response to the IEO Evaluation of Knowledge Management in the GEF and aims to enhance knowledge capture, exchange and learning amongst all GEF Partners and Stakeholders, including recipient countries.



Gustavo Fonseca Youth Conservation Leadership Program

- Graduate Studies Support
- Support to Field work in Conservation
- Support to participate in International Policy Meetings
- Youth Leaders Summits



Questions?

The Scientific and Technical Advisory Panel (STAP) to the Global Environment Facility (GEF)

GEF Introductory Seminar 20 Nov 2023

Sunday A. Leonard
Head of STAP Secretariat

STAP

SCIENTIFIC AND TECHNICAL
ADVISORY PANEL

*An independent group of scientists that advises
the Global Environment Facility*

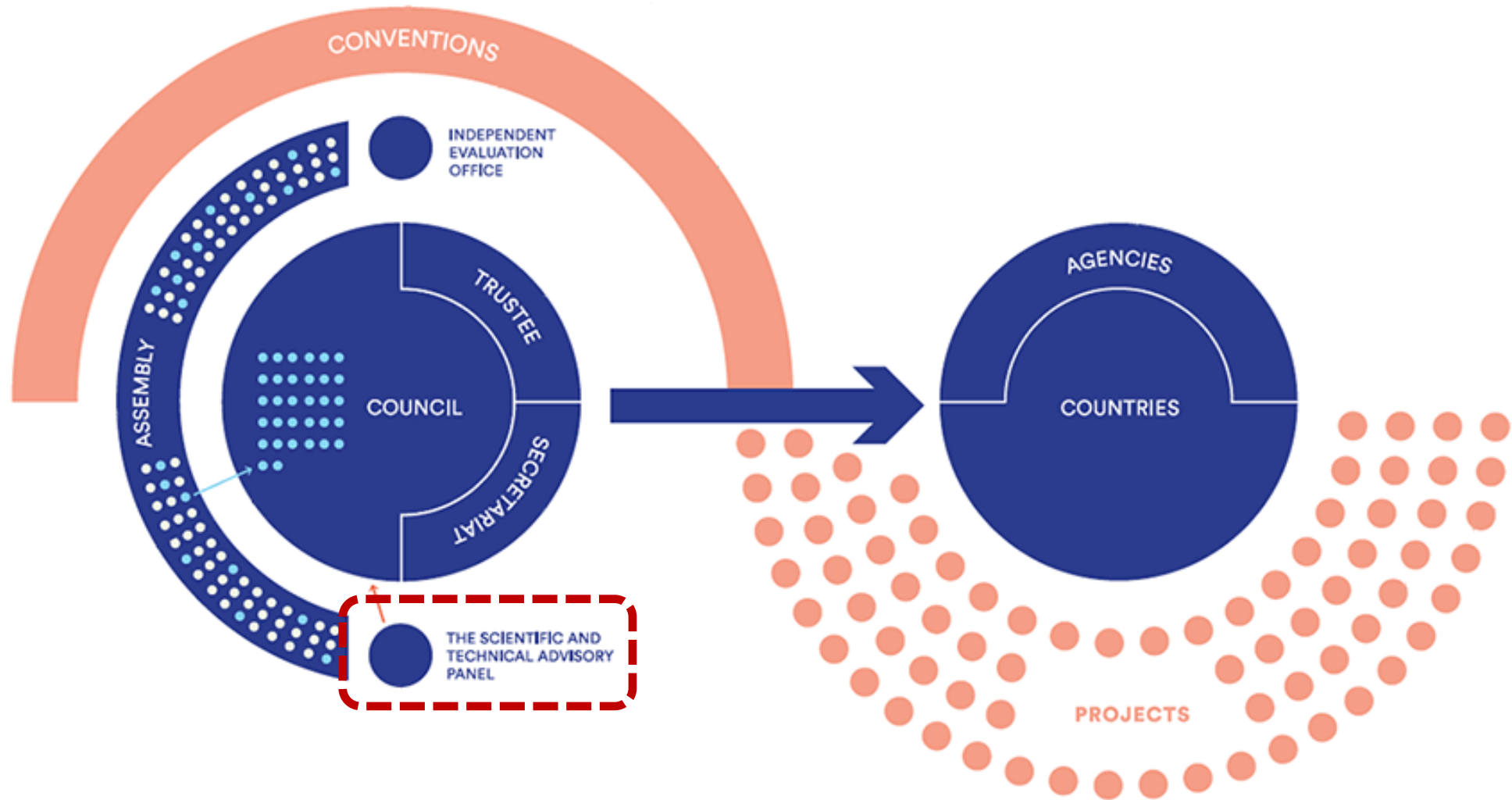


What is STAP?



STAP provides independent scientific and technical advice to the GEF on its policies, strategies, programs, and projects.

STAP in the GEF Partnership



STAP Panel Members

STAP consists of a Panel of leading scientists/experts from across the globe, supported by a Secretariat hosted by UNEP, Washington, DC.



Mark Stafford Smith
Advisor to Chair



Rosina Bierbaum
STAP Chair



Christopher Whaley
Advisor to Chair



Ngonidzasho Chirinda
Climate Change
Mitigation



Miriam Diamond
Chemicals and Waste



John Donaldson
Biodiversity



Graciela Metternicht
Land Degradation



Edward Carr
Climate Change
Adaptation



Susanne Schmeier
International
Waters

STAP's role in the GEF Partnership



Advisory

- Provide strategic science-policy advice
- Scan the horizon and bring in the latest knowledge to the GEF
- Interacts with other relevant scientific bodies and experts
- Take the scientific need of the GEF to the scientific community
- Provide technical guidance

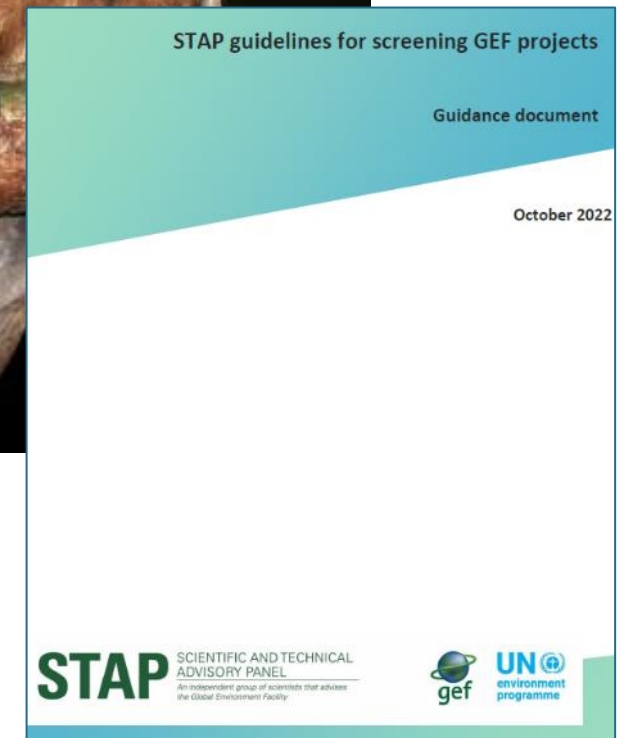
STAP's role in the GEF Partnership

Quality Control (Project Screening)

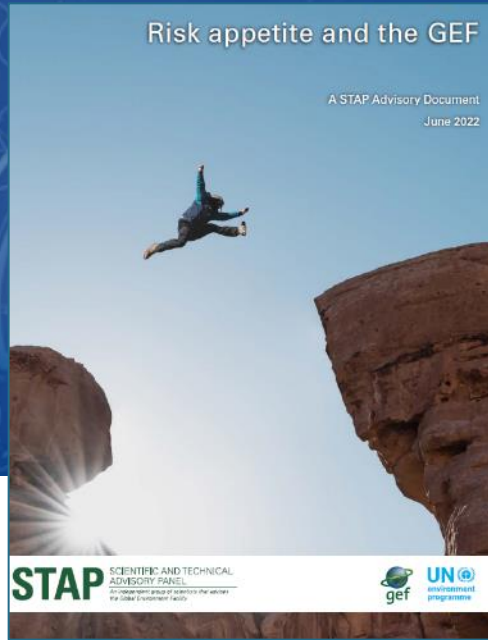
- Apply evidence-based principles for good project design
- Assess the quality of science and technology in proposals
- Help validate aspirations for innovation, durable outcomes, and transformation
- Advice on improvements to maximize global environmental benefits and enhance return on GEF's investments.
- Provide work program feedback to the GEF Secretariat



Príncipe Scops Owl (*Otus bikegula*)
São Tomé and Príncipe
Image credit: Philippe Verbelen



STAP's role in the GEF Partnership



Programmatic, policy, and operational support

- Training, e.g., theory of change and PIF training
- Operationalization, e.g., Integrated Programs agency and child project selection
- Workshops and webinars, e.g., transformation and knowledge management and learning
- Policy and guidance, e.g., risk appetite working group

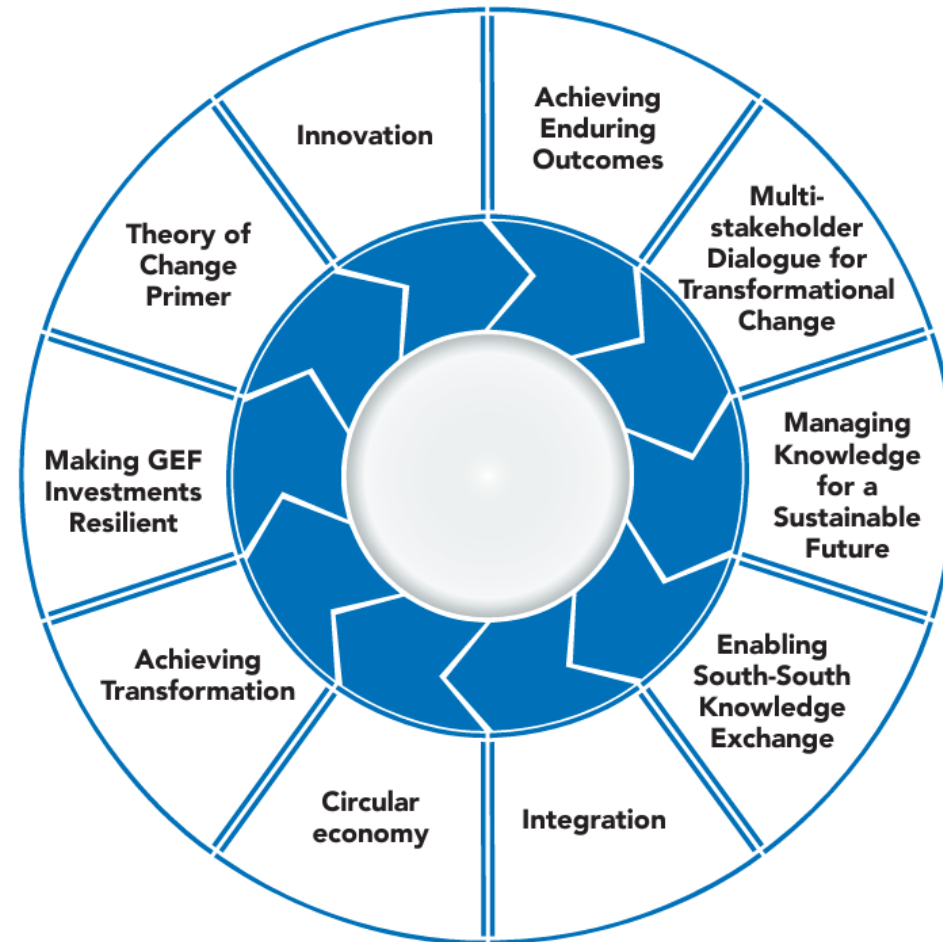
STAP Advice/Publications

<https://stapgef.org/resources>

Topic-oriented



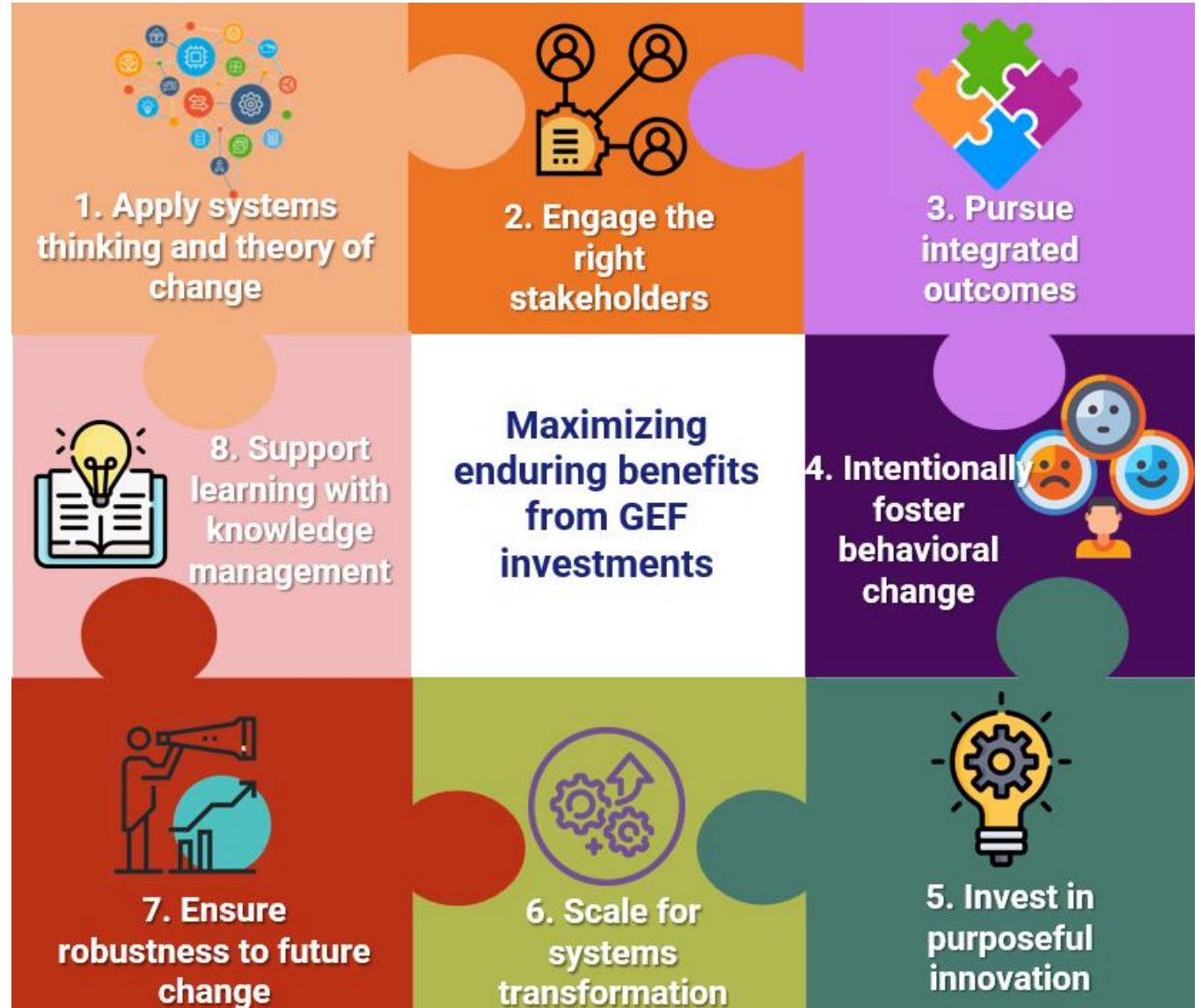
Process-oriented

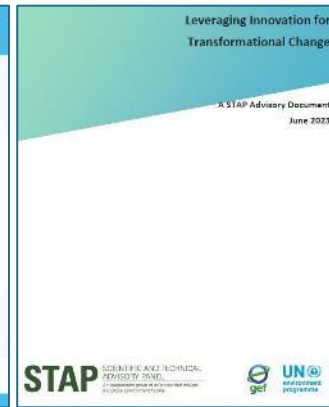
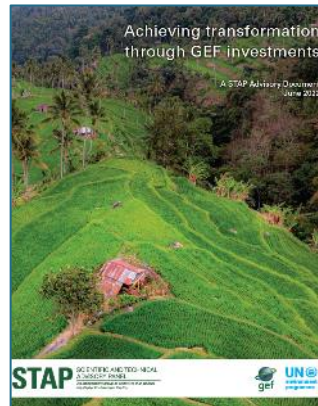
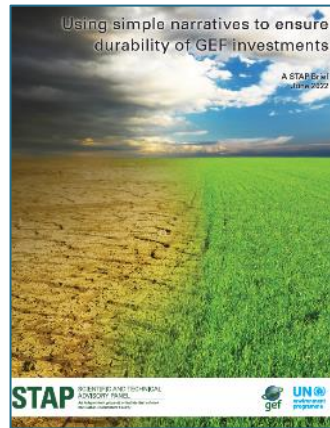
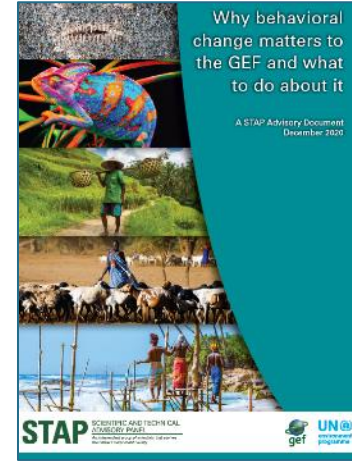
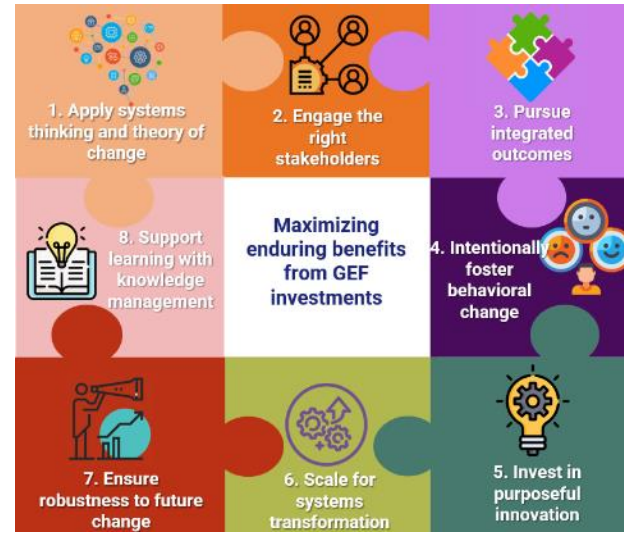
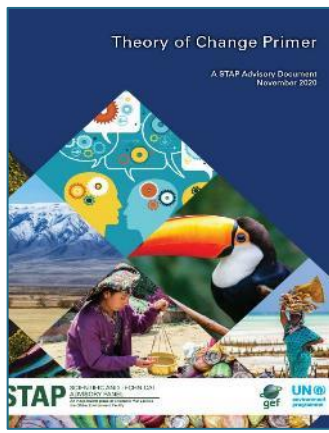


Enabling Elements for Good Project Design

Applied consistently but lightly at the PIF stage in the *Project Rationale* and *Project Description*

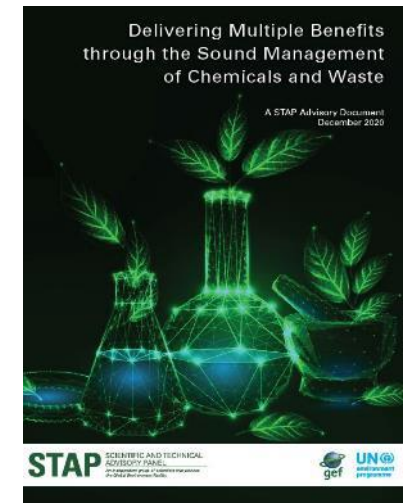
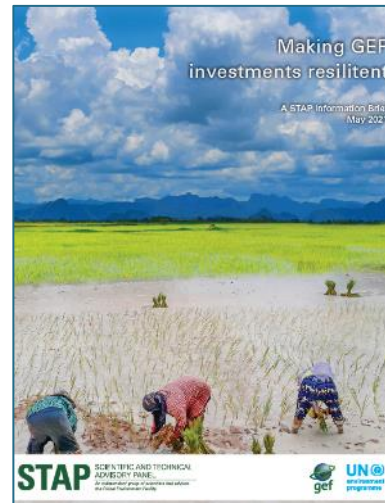
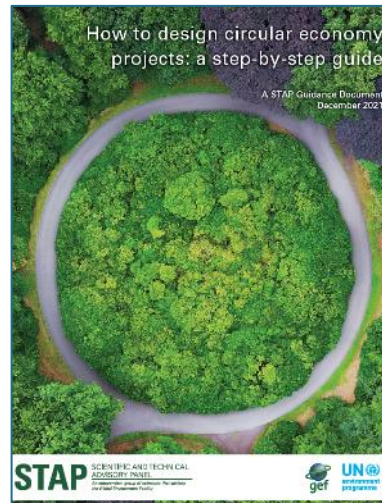
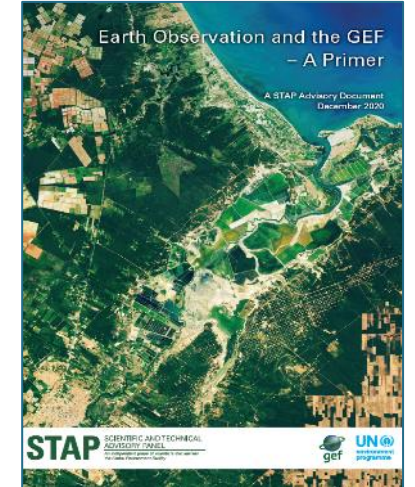
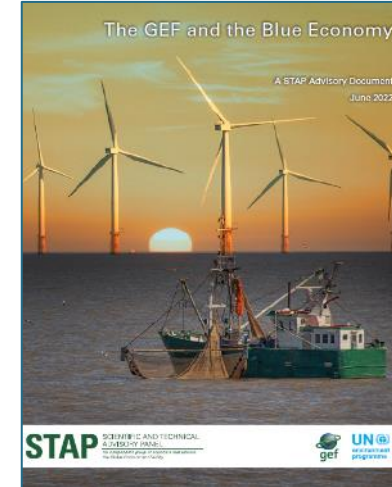
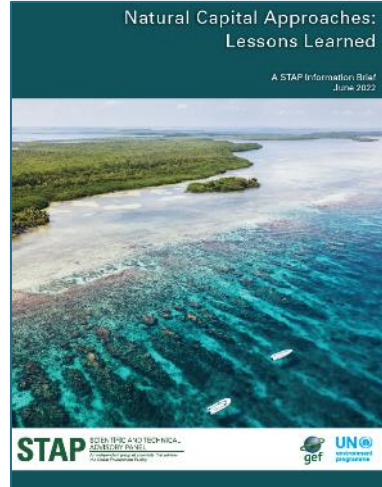
Then developed more fully by CEO endorsement (and in implementation)





Other STAP Advice/Publications

<https://stapgef.org/resources>



Future Advice/Publications



- Information note on blended finance
- Improving the outcomes of alternative livelihood interventions
- Advice on environmental security
- Citizen science and the GEF
- Agrivoltaics and the GEF
- Background note on Indigenous Learning and Knowledge

The Scientific and Technical Advisory Panel (STAP) to the Global Environment Facility (GEF)

GEF Introductory Seminar 20 Nov 2023

Sunday A. Leonard
Head of STAP Secretariat

STAP

SCIENTIFIC AND TECHNICAL
ADVISORY PANEL

*An independent group of scientists that advises
the Global Environment Facility*





EVALUATION IN THE GEF

www.gefio.org

November 2023



Overview

1

Evaluation in the GEF

2

Evaluation Policy and Minimum Requirements

3

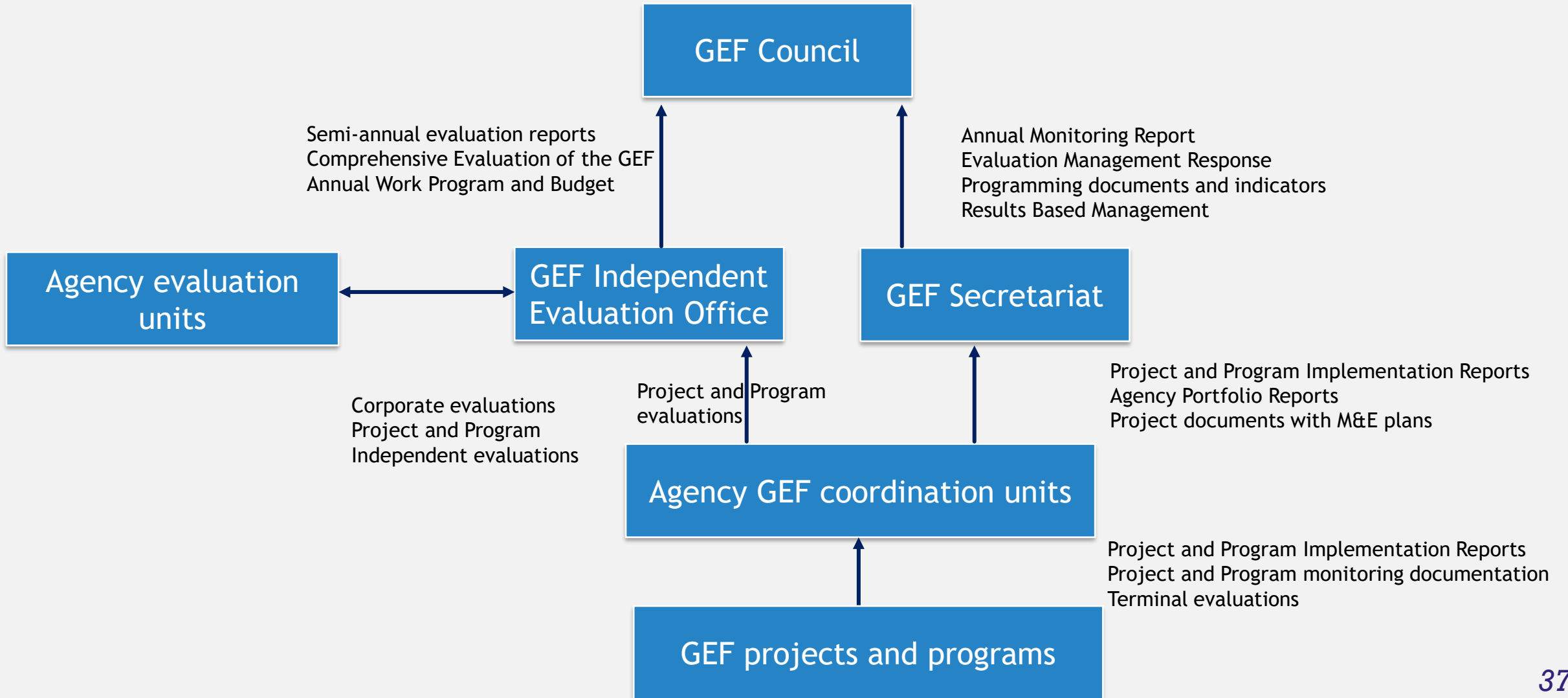
IEO data and evaluations

4

Priorities

Evaluation in the GEF

Evaluation in the GEF



GEF Independent Evaluation Office (IEO)

Celebrating 20 years: Brief history



2005 — The unit was renamed as GEF Evaluation Office

1996 — Initially established as an M&E unit within the GEF Secretariat

2003 — The M&E unit was made autonomous of the GEF Secretariat

2013 — The office was renamed as GEF Independent Evaluation Office

GEF Independent Evaluation Office (IEO)

Mission

Enhance global environmental benefits through excellence, independence, and partnership in monitoring and evaluation.

Principles

Impartiality
Professionalism
Transparency

Functions

Independent evaluation
Setting of minimum standards
(normative)
Quality control (oversight)
Sharing evaluative knowledge



Independent
Evaluation Office
GLOBAL ENVIRONMENT FACILITY

Evaluation Policy



The GEF Evaluation Policy

- ✓ Defines the concepts, roles, types, use and follow up of evaluation within the GEF
- ✓ Defines the institutional framework and responsibilities
- ✓ Indicates the minimum requirements covering:
 - design of evaluation plans
 - application of evaluation plans
 - project and program evaluations
 - engagement of operational focal points in evaluations

Types of Evaluations

Project Evaluations	Program Evaluations	Country Cluster Evaluations
Impact Evaluations	Cross-cutting and thematic evaluations	Process and performance evaluations
Ad-hoc Reviews	Comprehensive Evaluations of the GEF (OPS)	

Different TORs, scopes, frequency, audiences, methodologies, lead

Minimum Requirement 1

Design of M&E Plans

Concrete and fully budgeted M&E plan by CEO endorsement for FSP/
CEO approval for MSP/ by PFD approval for programs.

M&E Plan should include:

- SMART indicators
- Program or project baseline data
- Implementation reports, midterm reviews, terminal evaluations
- Organizational set up and budget for M&E

Minimum Requirement 2

Implementation of M&E Plans

Project/program monitoring and supervision will include execution of M&E plan:

- Use of SMART indicators for process and implementation
- Use of SMART indicators for results
- Baseline is fully established, data are compiled to review progress, evaluations are undertaken as planned
- Organizational set up for M&E is operational, its budget is spent as planned

Minimum Requirement 3

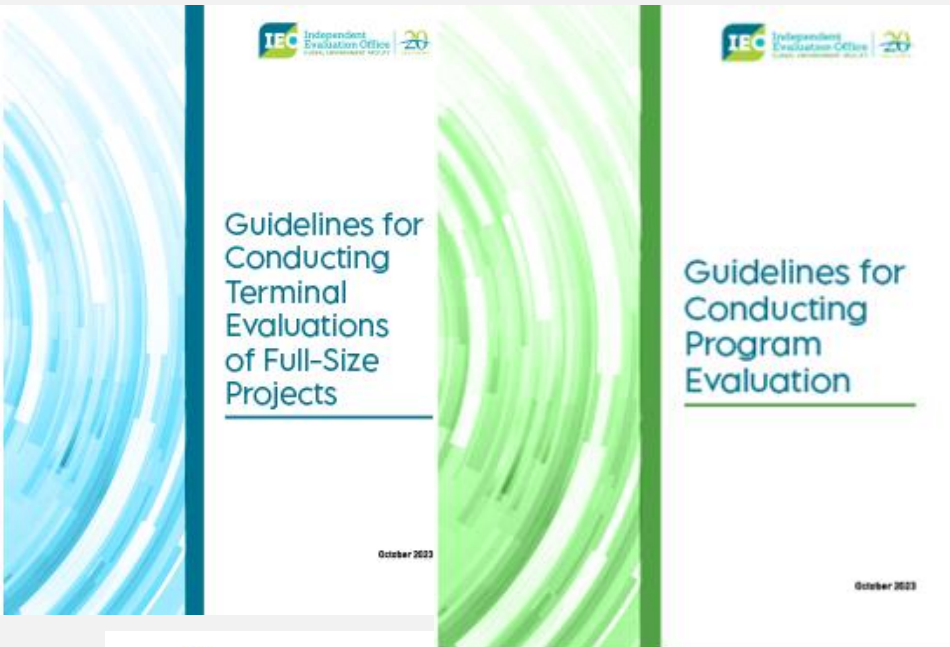
Project/Program Evaluations:

All FSP/MSP projects and all programs will be evaluated at the end of implementation

Evaluations should:

- Be independent of project/program management or reviewed by GEF Agency evaluation unit
- Apply international evaluation standards and minimum requirements of this Policy
- Assess, as a minimum, outputs and outcomes, likelihood of sustainability, compliance with Minimum Requirements 1 & 2
- Contain basic project/program data; lessons for broader applicability
- Should be sent to GEF IEO within 12 months of completion of project/program

Terminal Evaluation



Terminal Evaluation Guidelines can be accessed at:

https://www.gefio.org/sites/default/files/documents/evaluations/terminal-evaluations-2023_0.pdf

Guidelines for Program Evaluation:

<https://www.gefio.org/sites/default/files/documents/evaluations/program-evaluations-2023.pdf>

Terminal Evaluations can be accessed at:

<https://www.thegef.org/projects-operations/database>

The screenshot shows the GEF Projects Database website. It features a search bar at the top and a table of project data below. The table has columns for Country, Title, ID, Countries, Focal Area, Type, Agencies, GEF Grant, Co-financing, and Status. The first row of data is for a project in Yemen titled 'Strengthening Resilience and Environmental Safety Associated with the Safe Storage Operation in the Red Sea'.

Country (National Projects)	Title	ID	Countries	Focal Area	Type	Agencies	GEF Grant	Co-financing	Status
Country (Regional/Global Projects)	Strengthening Resilience and Environmental Safety Associated with the Safe Storage Operation in the Red Sea	11056	Yemen	Biodiversity	Public	United Nations Development Programme	4,016,210	77,260,000	Concept Approved
Funding Source	Validation Twenty Group	11055	Global	Climate Change	Public	United Nations Development Programme	4,872,831	3,300,000	Concept Approved
Non-Grant Instrument	Building programmes to leverage adaptation by assessing and measuring impacts of climate change	11054	Algeria, Armenia, Bahrain, Cabo Verde, Cameroon, Colombia, Dominican Republic, Haiti, Honduras	Biodiversity	Enabling Activity	United Nations Development Programme	16,095,000		Concept Proposed

Minimum Requirement 4

Engagement of operational focal points

- ❑ M&E plans will specify how OFPs will be engaged
- ❑ GEF Agencies will inform OFPs on M&E activities
- ❑ OFPs will be informed on midterm reviews, terminal evaluations, receiving drafts for comments and final reports
- ❑ OFPs will be invited to contribute to the management response (where applicable)
- ❑ GEF Agencies will keep track application of this requirement in their GEF-financed projects and programs

Follow up to Evaluations

A management response is required for all evaluations and performance reports presented to the GEF Council by the GEF IEO. It is coordinated by GEF SEC with inputs from other GEF stakeholders.

GEF Council takes into consideration the evaluation findings and the recommendations as well as the management response and action plans in the decision.

GEF IEO reports on the progress of actions towards implementation of the decision annually through the Management Action Record (MAR)

IEO DATA and EVALUATIONS

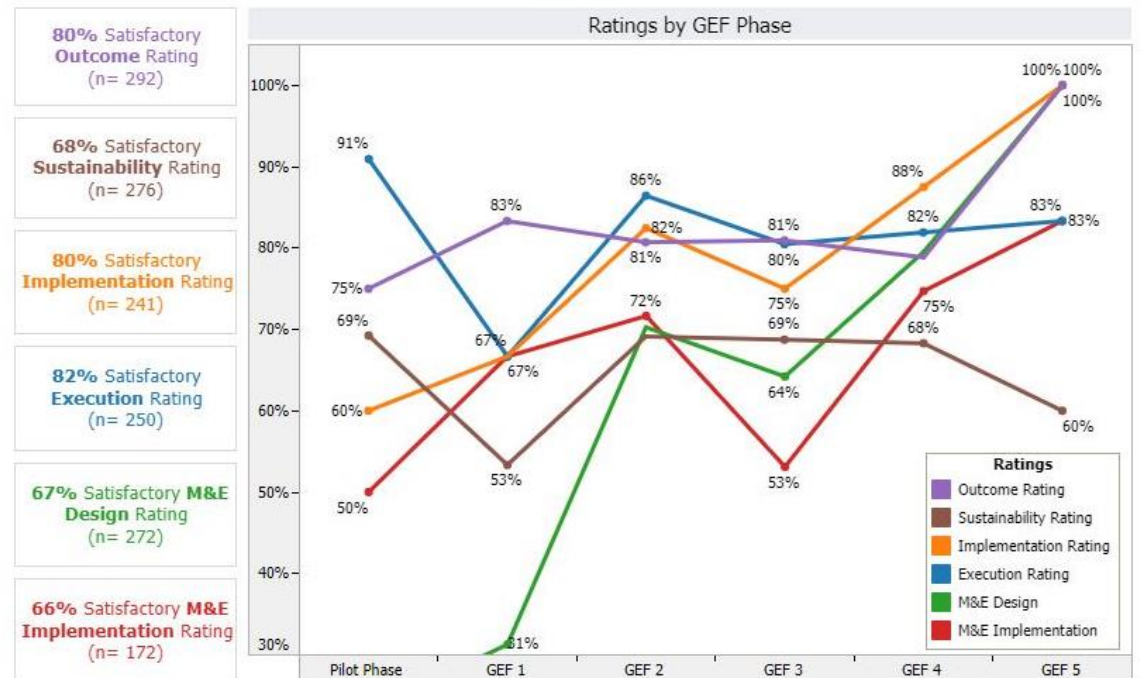


Data by Country and other resources on the IEO website

www.gefio.org/data-ratings



Disclaimer: Country borders or names do not necessarily reflect the GEF IEO official position. This map is for illustrative purposes and does not imply the expression of any opinion on the part of the GEF IEO, concerning the legal status of any country or territory or concerning the delimitation of frontiers or boundaries.

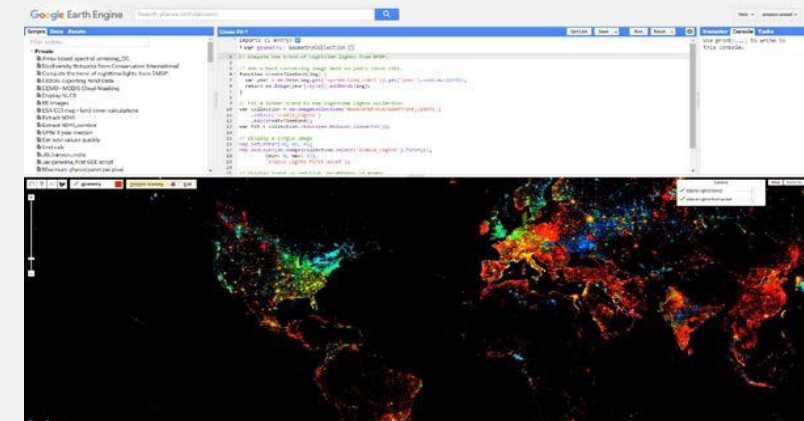
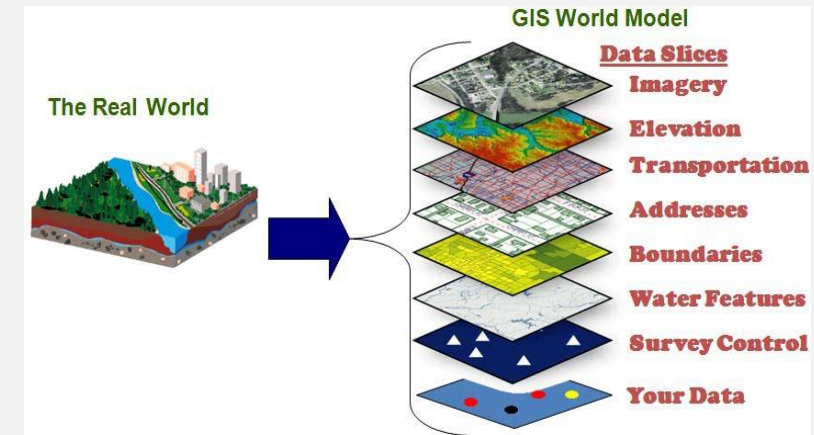
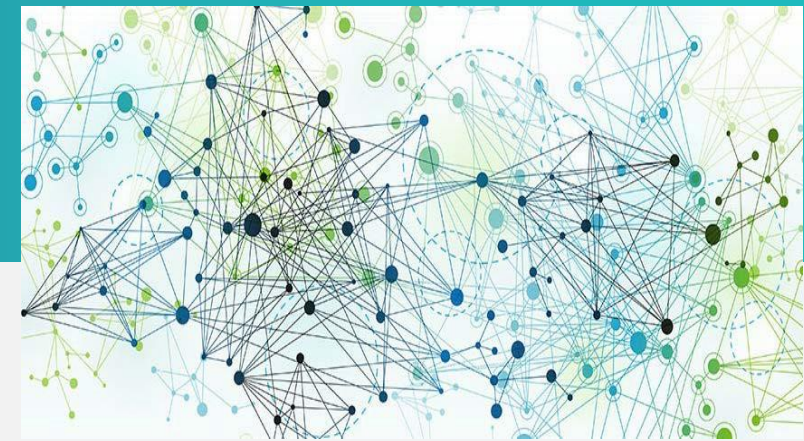


Evaluations undertaken by IEO

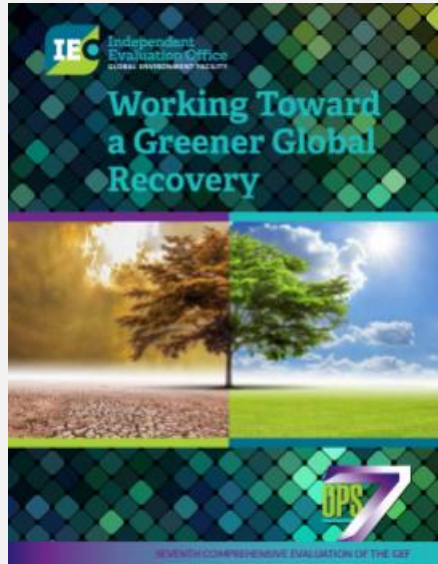
- ✓ Impact, thematic, performance, country/country cluster, formative, process
- ✓ Comprehensive Evaluation of the GEF every 4 years

Methods

- ✓ Qualitative through portfolio reviews, case studies
- ✓ Quantitative including GIS, Remote Sensing, Big Data Analytics



Recent evaluations



Evaluation of GEF Support in Fragile and Conflict-Affected Situations (2020)



November 2020

IEC Independent Evaluation Office
GLOBAL ENVIRONMENT FACILITY

GEF Annual Performance Report 2021



January 2022

IEC Independent Evaluation Office
GLOBAL ENVIRONMENT FACILITY

GEF Support to Sustainable Forest Management



Volume 1: Main Report

November 2022

IEC Independent Evaluation Office
GLOBAL ENVIRONMENT FACILITY

Resilience, Climate Change Adaptation, and Climate Risks in the GEF Trust Fund



November 2022

IEC Independent Evaluation Office
GLOBAL ENVIRONMENT FACILITY

GEF Interventions in the Artisanal and Small-Scale Gold Mining Sector



January 2022

IEC Independent Evaluation Office
GLOBAL ENVIRONMENT FACILITY

GEF Integrated Approach to Address Drivers of Environmental Degradation



Volume 1: Main Report

August 2022

IEC Independent Evaluation Office
GLOBAL ENVIRONMENT FACILITY

GEF Country Support Program



February 2023

IEC Independent Evaluation Office
GLOBAL ENVIRONMENT FACILITY

GEF Support to Innovation: Findings and Lessons



Last Updated on May 2021

Proposed Work Program
for GEF-8 period

FY23

- COVID-19
- Water Security
- Annual Performance Report 2023
- Report GEF IEO MAR
- Community-focused approaches
- Climate warning and information systems
- Climate Change Mitigation
- Behavioral Change
- Evaluation of policy influence interventions
- LDCF/SCCF: Annual Evaluation Report 2023
- Updated Guidance Document: Evaluation in the LDCF/SCCF

FY24

- Socio Economic Co Benefits
- SCCE on Drylands
- Sustainable Cities program
- Combating Illegal Wildlife Trade
- Integrated interventions in SIDS
- LDCF/SCCF: 2024 LDCF program evaluation
- Learning from Challenges
- Project efficiency in GEF interventions
- The Capacity-building Initiative for Transparency (CBIT)
- GEF Support to Nature Based Solutions (NbS)
- LDCF/SCCF: Annual Evaluation Report 2024

FY25

- Country Engagement Strategy
- Small Grants Program
- Food Security & Commodities IAP
- Annual Performance Report 2024
- Implementation of the Private sector Strategy
- Focal area assessment
- Formative Evaluation of the GEF-7 and GEF-8 Impact Programs
- Governance of the GEF
- Eighth Comprehensive Evaluation of the GEF (2022-2025)
- Final report to council (FY 2026)
- GEF Results Based Management
- Implementation of GEF Policies
- Knowledge Management in the GEF
- LDCF/SCCF AER2025

Knowledge Management



Books Published

- ✓ *Transformational Change for People and the Planet* (GEF IEO Director and Deputy Director. Springer)
- ✓ *Environmental Evaluation and Global Development Institutions: A Case Study of the Global Environment Facility* (Geeta Batra, Juha Uitto, Osvaldo Feinstein. Taylor & Francis Group)
- ✓ *Dissemination of OPS7-Exec summaries in English, French, Spanish.*



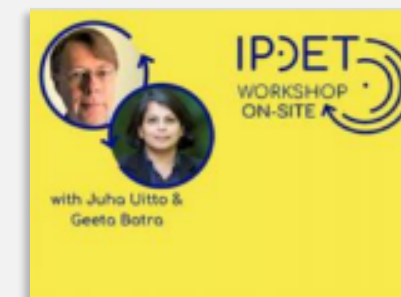
Conferences, events and networks

- ✓ International Conference on Evaluating Environment and Development (March 5-7, 2024)
- ✓ Expanded Constituency Workshops
- ✓ Environmental Dimensions of Sustainable Development (United Nations Evaluation Group)



Training

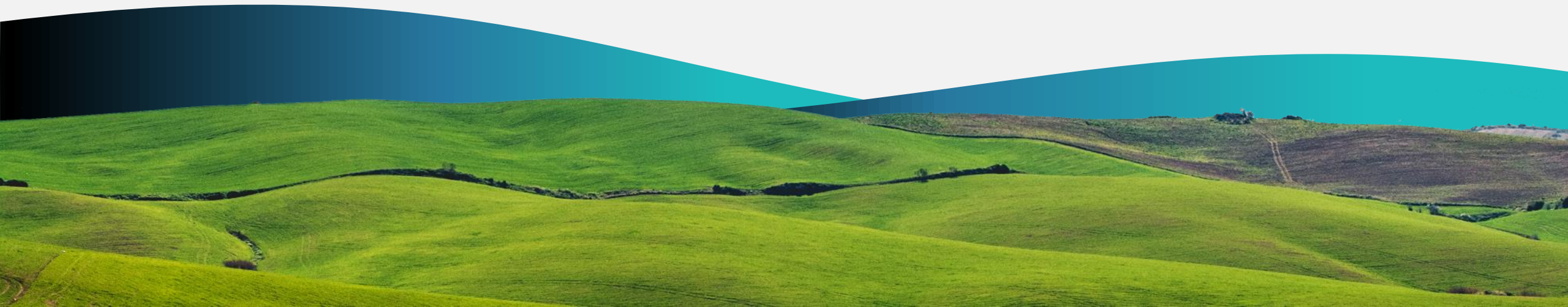
- ✓ Training module on evaluation at the nexus of the environment and development for the International Program for Development Evaluation Training (IPDET, 2022, 2023, 2024)
- ✓ Online training on environmental evaluation



Thank you!

gefieo.org

@GEF_IEO





Questions?

A top-down view of a cup of coffee on a burlap surface. The cup is white with a blue rim and contains a golden-brown coffee. Surrounding the cup are various coffee-related items: coffee beans, cinnamon sticks, and other spices. A green rectangular overlay is positioned on the right side of the image, containing the text "Coffee Break" in white and "Say Hello" in orange.

Coffee Break

Say Hello



GEF Introduction Seminar
November 20 to 22, 2023
Trust Funds and Partner Relations (DFTPR)
Development Finance (DFi)

GEF Governance and Structure

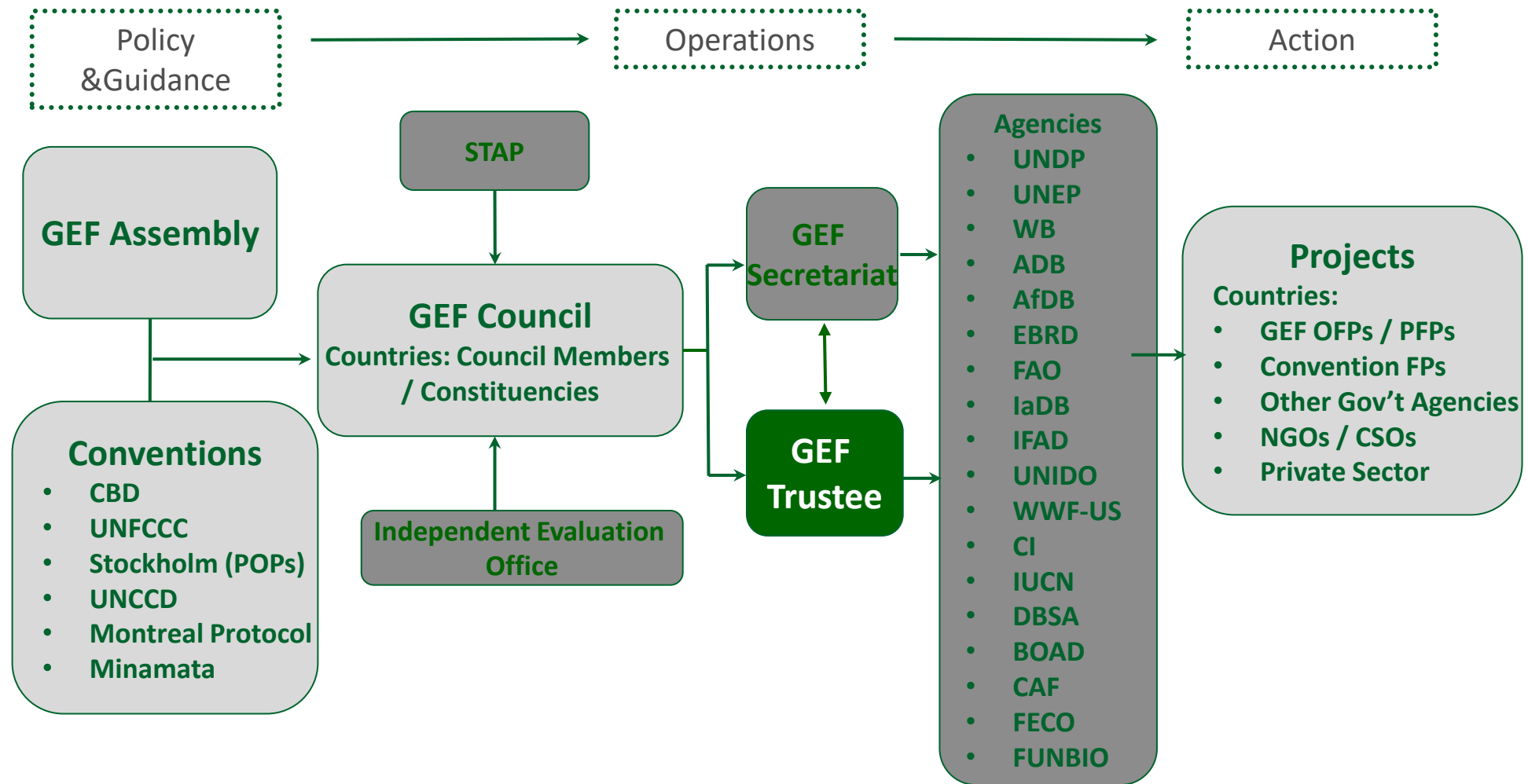
Trustee Roles and Responsibility

Resource Mobilization, Financial Management and Reporting

Financial Procedure Agreements

GEF Trustee team and contact information.

GEF Governance and Structure





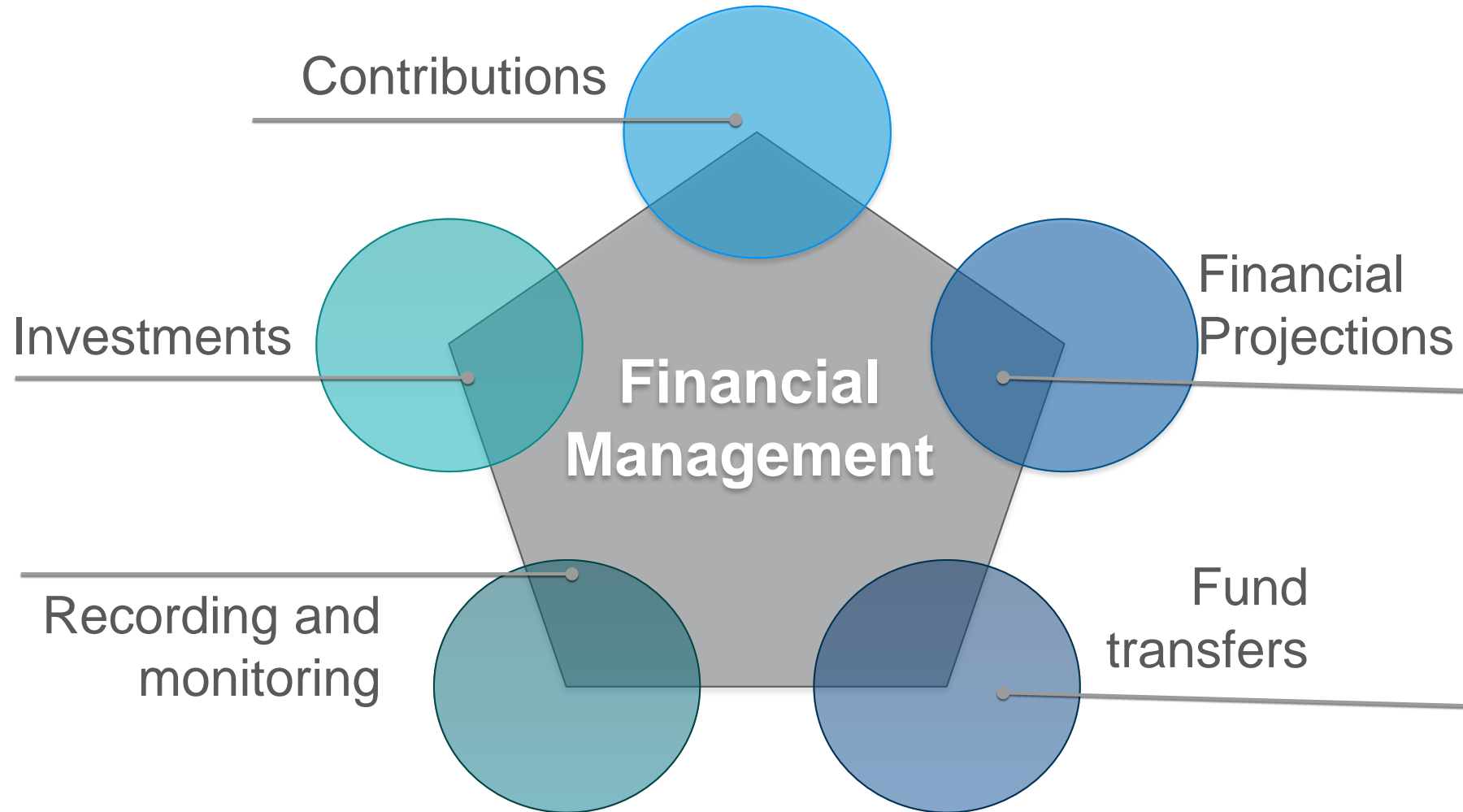
- Trustee's role and fiduciary responsibilities are set forth in the **GEF Instrument**, Annex B.

- Trustee co-chairs the **GEF Replenishment negotiations** for mobilizing resources through the established replenishment process

- **Manages the liquid assets** of the GEF Trust Fund and invests according to the IBRD's investment management principles, in a commingled investment portfolio

- Trustee **holds funds in trust** and **manages them for the purpose** provided under the GEF Instrument and decisions of the Council

- Ensure **compliance with Instrument** and other legal documents





❑ Investment Management of GEF Trust Fund Resources

- GEF Trust Fund resources are managed in a single, commingled investment portfolio (the “pool”).
- Preservation of capital is the primary investment objective, while optimizing investment returns and maintaining adequate liquidity.
- GEF resources are invested in asset classes with different tenures as per GEF’s liquidity needs for downstream activities.

❑ Sustainable and Responsible Investing in the context of GEF Portfolio

- Inclusion of Environmental, Social and Governance (ESG) factors in investment decisions.
- Given GEF’s unique positioning and mandate in the environment and social space, ESG factors have been incorporated in investment decisions.
- A dedicated Sustainable Bond Strategy for the GEF was implemented in 2021.
- Trustee reports investment performance, ESG rating, and Impact report for the GEF portfolio to the GEF Council.

Legal document governing the business relationship between IBRD as Trustee of the GEF Trust Fund and the GEF Agencies setting the definitions and rules for:

- Commitment of funds by Trustee
 - Transfer of funds to GEF Agency
 - Use of funds by GEF Agency
 - Reflows vs. Refund from GEF Agency to the Trustee
 - Financial reporting by Agency

I Agree



Reporting under the FPA

Project approvals, cancellations and closures

Fee approvals and cancellations

Investment income, refunds from closures, reflows
from Non-Grant Instruments

Annual financial statements and audit reports



Reach us at geftrustee@worldbank.org



Website: fiftrustee.worldbank.org

Team Lead – Client relations, Replenishment and Portfolio management:

- Mr. Praveen Desabatla (pdesabatla@worldbank.org)

Contribution management and Agency liaison:

- Ramachandran Chidambaran (rchidambaran@worldbank.org)
- Mr. Jorge Alberto Fuentes Lanza (jfuenteslanza@worldbank.org)

Foreign Exchange management and Investment management

- Mr. Rahul Gupta (rgupta11@worldbank.org)

Disbursement management and Internal Controls:

- Ms. Thejobala Paithoori Sethuraman (tsethuraman@worldbank.org)
- Ms. Chalida Chararnsuk (cchararnsuk@worldbank.org)

Analytics and Reporting:

- Mr. Birama Nayagam Subramanian (bsubramanian@worldbank.org)

Program support:

- Mr. Krishna Thapa (kthapa@worldbank.org)

Thank you

Q&A





GEF Introduction Seminar

The High Ambition Coalition for Nature and People

**The Coalition beyond COP15:
Together for the implementation of 30by30**



20 November 2023

What is the HAC for N&P?

Inter-regional group of 117 countries launched in 2021,

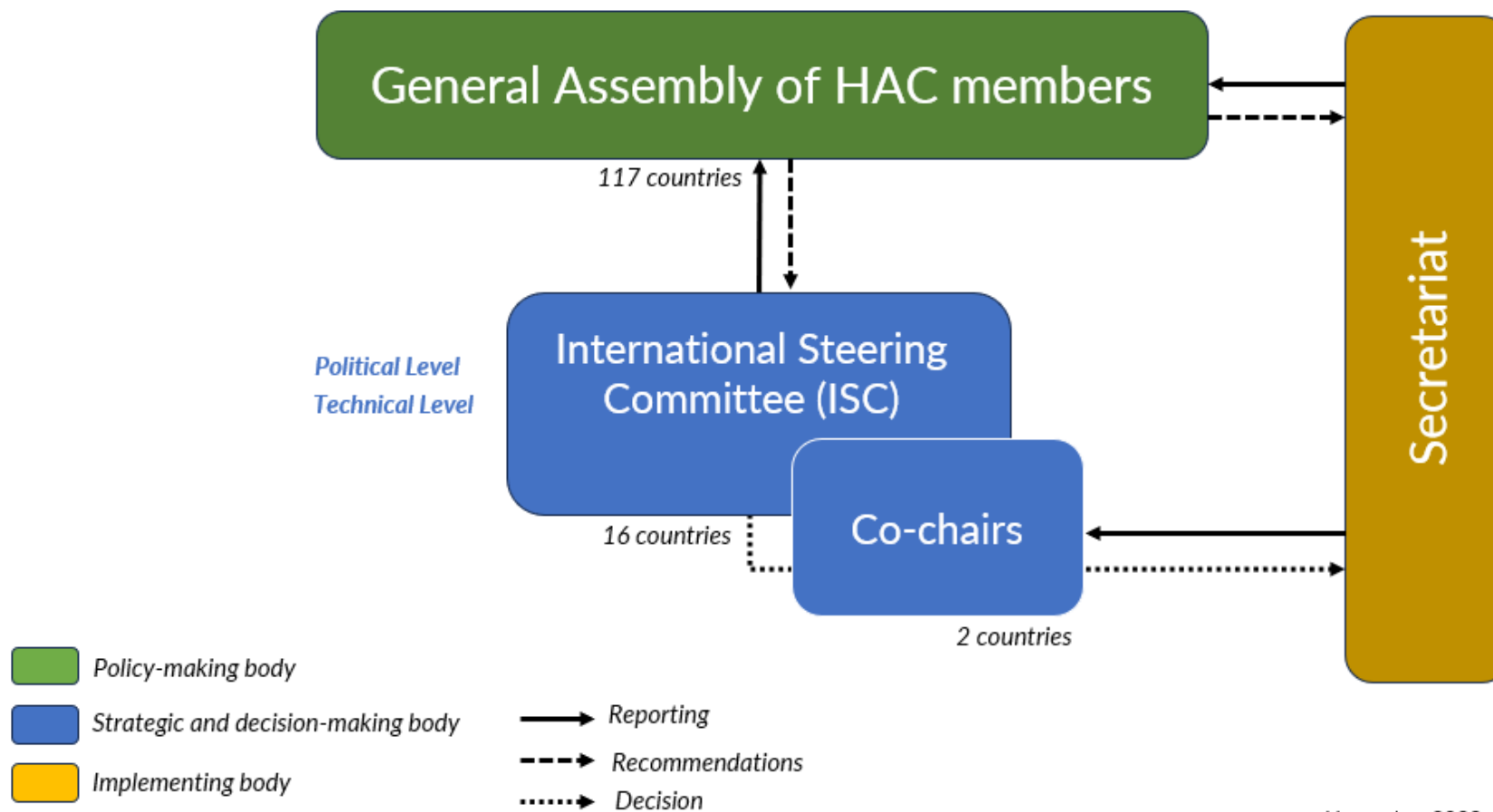
The coalition has been at the center of international negotiations, particularly in the **formulation, negotiation and adoption of the CBD's Kunming-Montreal Global Biodiversity Framework.**

Providing leadership on the global goal to protect at least **30% of the planet's land and 30% of the ocean by 2030**, as a minimum target to halt biodiversity loss, climate change, desertification according to scientific advice.



Adoption of the KMGBF (Photo: Wikipedia)

Governance



November 2023

Hosting and Administration of the Secretariat



Physical host of the
Secretariat



WORLD
RESOURCES
INSTITUTE

Administrative support
(recruitment, staffing,
equipment, etc.)

Our 4 Pillars



Pillar 1. Political Mobilization

1

Yearly HL events to maintain 30x30 prominence at international meetings, engagement

with IPLCs, philanthropists, private sector, IGOs , NGOs, scientists, academia and other actors

2

ISC Ministerial and other stakeholders meetings to assess progress and provide political guidance to the HAC Secretariat

3

Bi-annual stocktake events (similar to the HLPF - SDGs) to review the qualitative and quantitative progress towards 30x30.

4

Ministerial bilateral by the HAC co-chairs and **Country engagements**

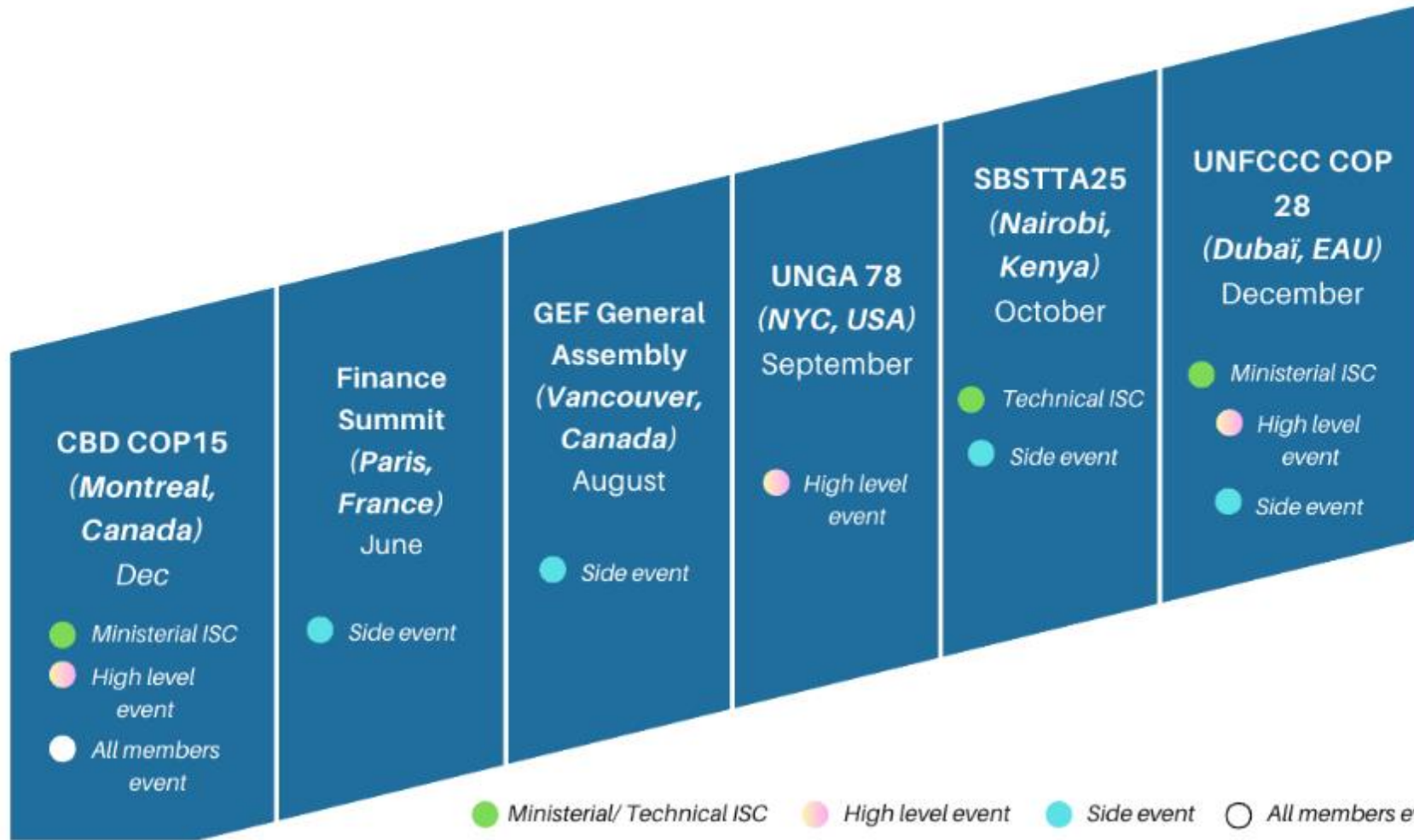
when needed to engage and encourage more action



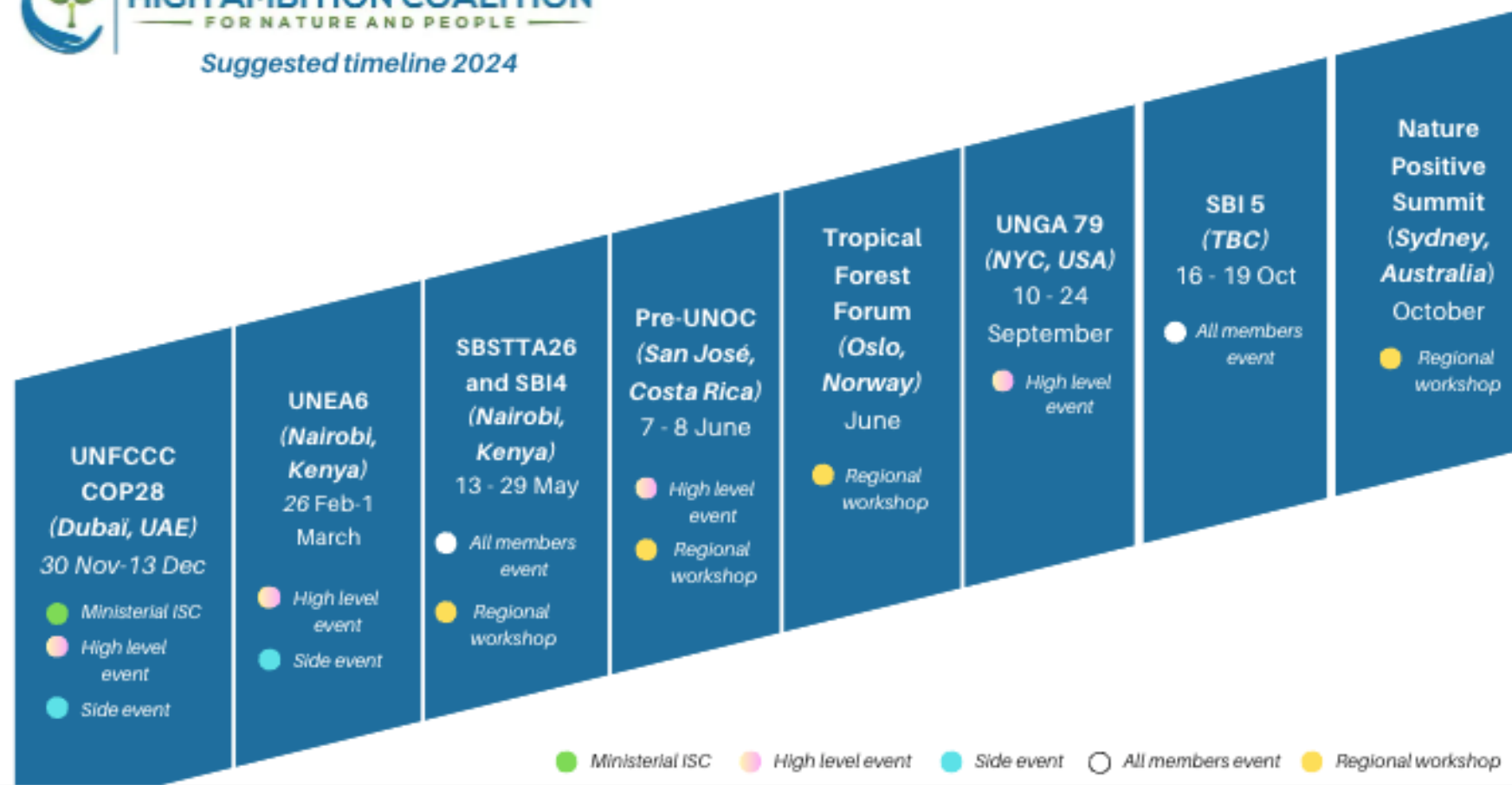
HIGH AMBITION COALITION

FOR NATURE AND PEOPLE

2023



Pillar 1. Political Mobilization – Looking ahead



Pillar 2. 30x30 Solutions Toolkit

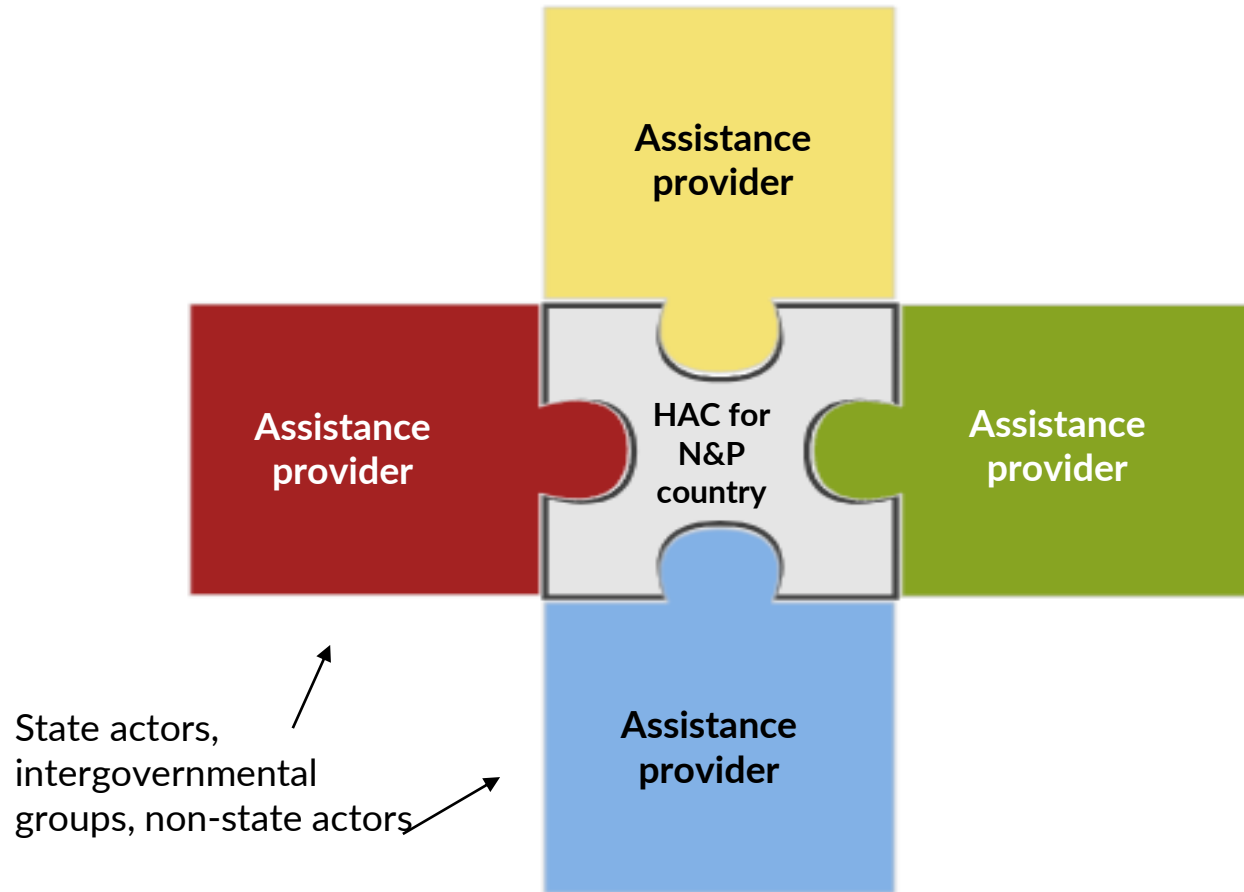
- Online toolbox with resources related to Target 3 (materials already developed)
- In partnership with The Nature Conservancy and IUCN/WCPA
- In collaboration with WWF, IIFB and Campaign for Nature
- Open tool to all countries and stakeholders
- Updated platform thanks to countries and stakeholders contributions



<https://www.30x30.solutions/>

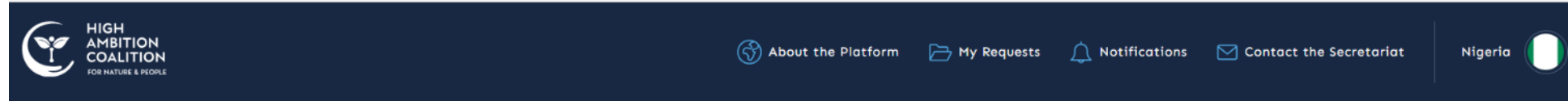
Pillars 3 and 4. Matchmaking: Technical and Financial

A support service **bringing together** HAC for N&P members requesting for support (financial or technical assistance) *and* organizations and countries offering support for development and implementation of the 30x30 target.



Online platform

- Exclusive area only accessible by login
- Facilitates coordination
- Increases visibility of 30x30 needs
- Request driven



MATCHMAKING Create a New Request +

Filter: Technical Requests/Offers Search Update

REQUESTS

Submitted 14th November, 2023

Peru Technical

[Example] Increasing connectivity of Peru national system of protected areas
Submitted 10th November, 2023
Theme 2

India Technical

[Example] Mapping OECMs in Northern India
Submitted 16th October, 2023
Theme 2

OFFERS

Theme 3 Theme 4 View Offer

SPACES Technical

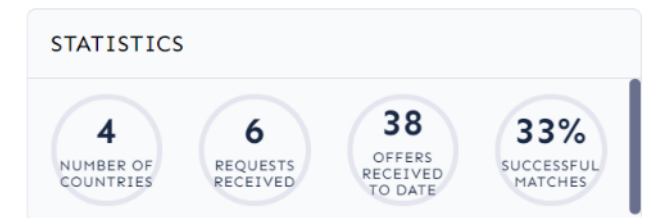
Supporting National Implementation of 30x30 and Related Climate & Nature Objectives
Submitted 17th October, 2023
Theme 1 Theme 2 Theme 3 Theme 4 View Offer

IUCN World Commission on Protected Areas Technical

Expertise support in measuring conservation effectiveness
Submitted 17th October, 2023
Theme 1 Theme 3 View Offer

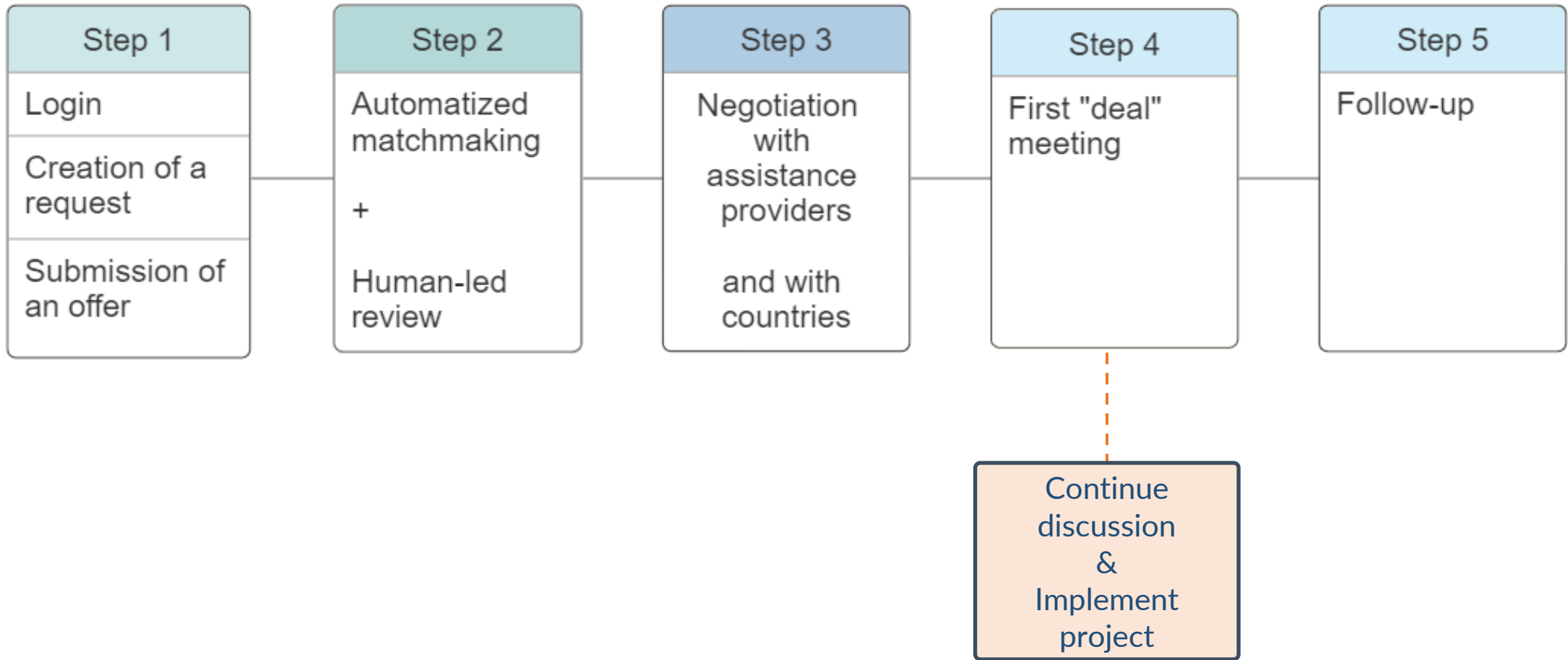
RECENT MATCHES

Date	Country	Assistance Provider	Request Title	Theme
9th Nov '23	Nigeria	IUCN World Commission on Protected Areas	[Example] Organizing a national workshop on implementing Target 3	Theme 1
9th Nov '23	Peru	Global Fishing Watch	[Example] Increasing connectivity of Peru national system of protected areas	Theme 2



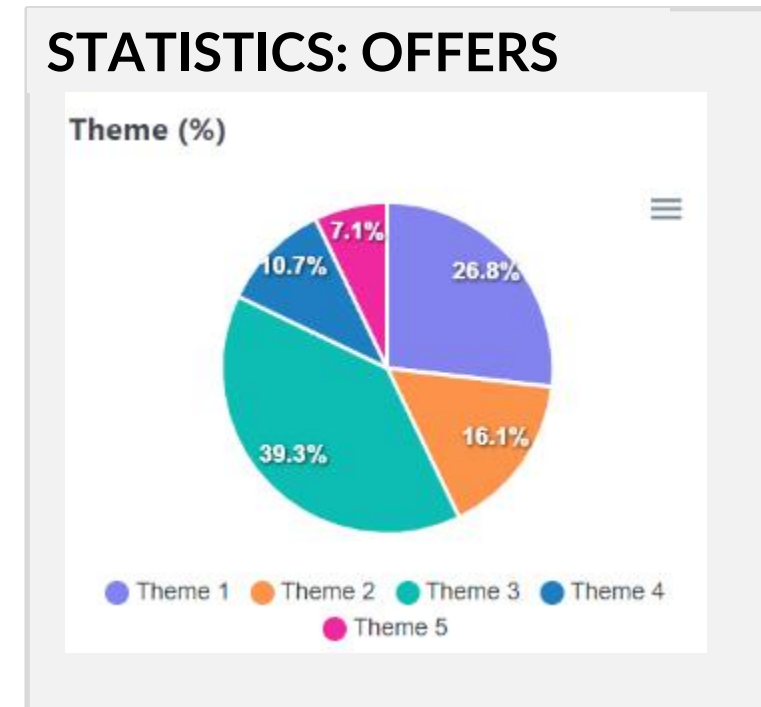
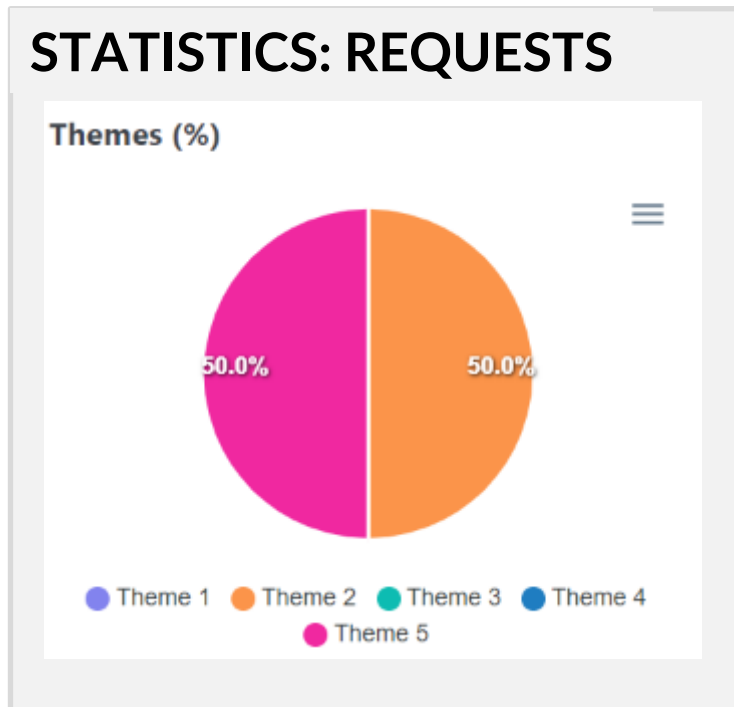
<https://www.hacfornatureandpeople.org/>

Our matchmaking process

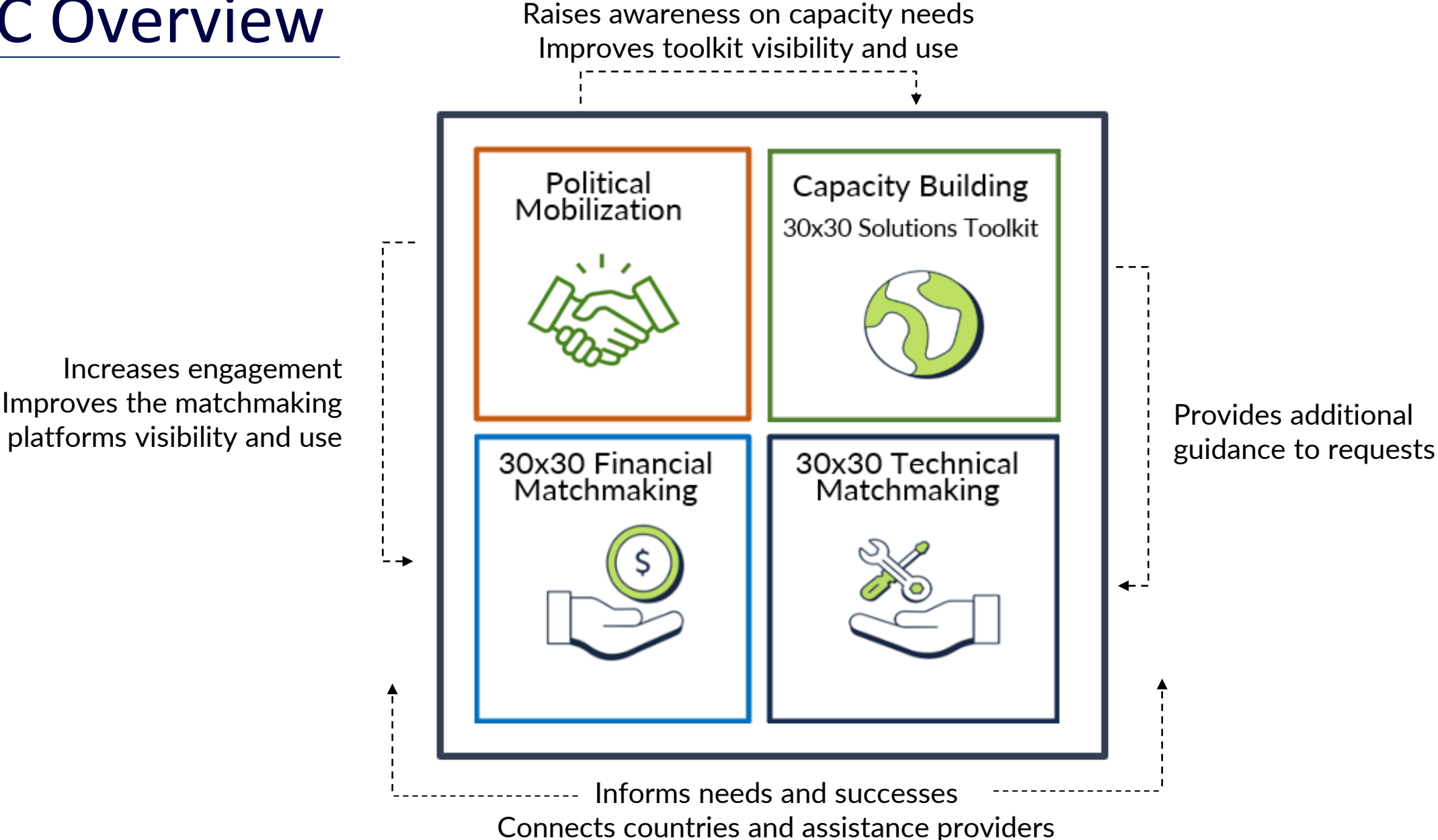


The added value of having a Secretariat: Following up with HAC members

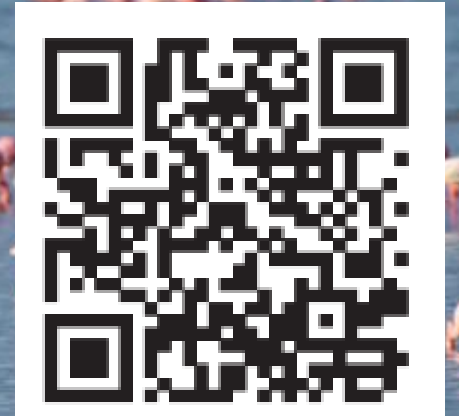
- Follow-up email per match
- 6-week email to partners
- Proactively outreach to partners for no-match-found requests
- Annual survey



HAC Overview



Thank you!

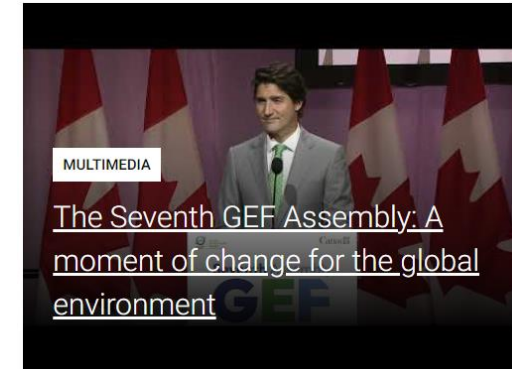
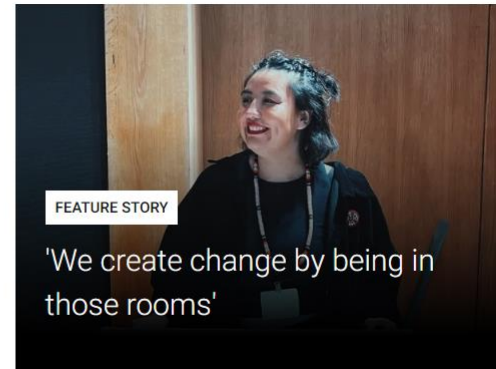
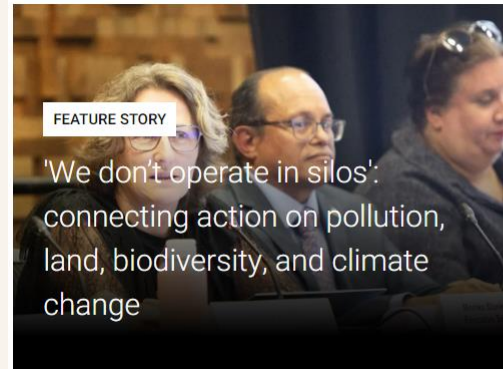
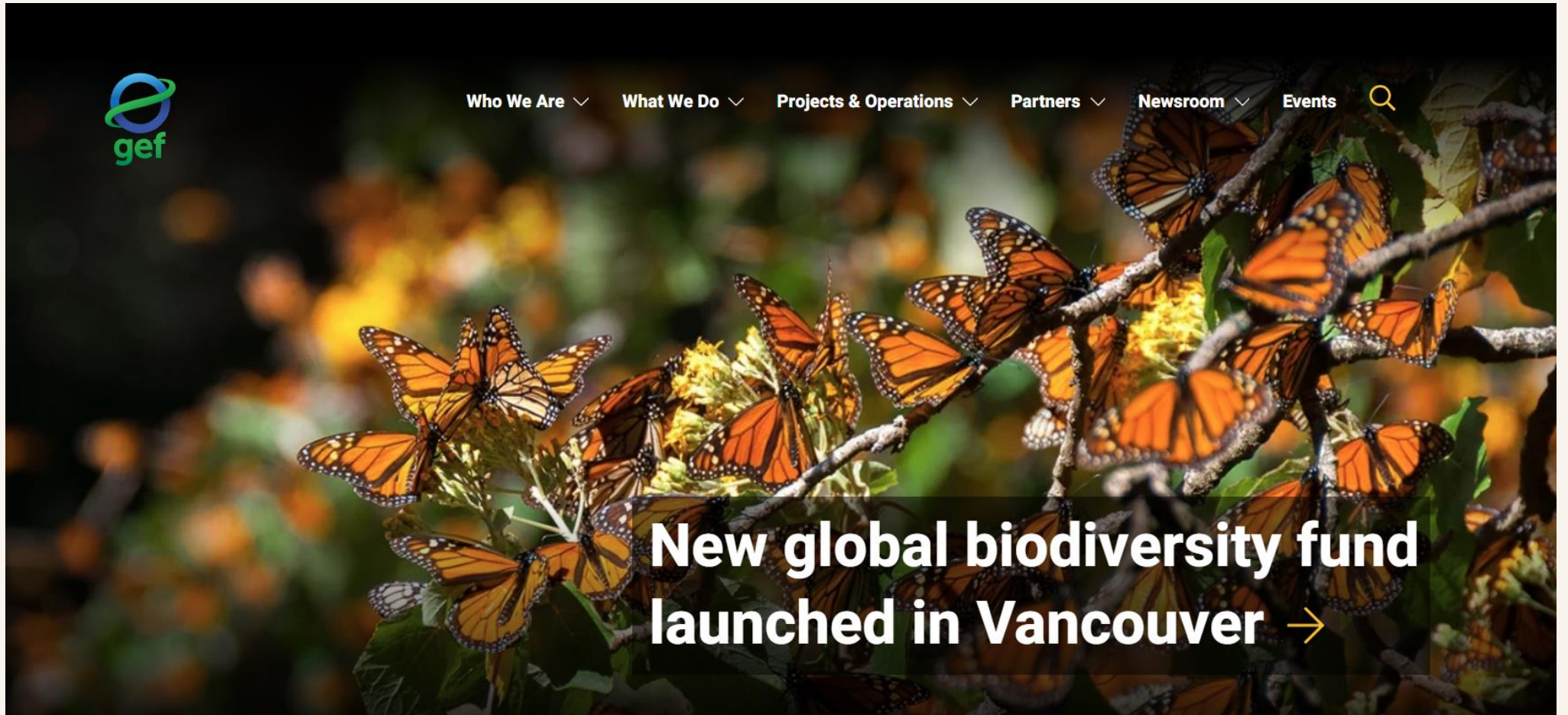




November 2023

GEF Communications

Website
www.thegef.org



Storytelling



Who We Are ▾

What We Do ▾

Projects & Operations ▾

Partners ▾

Newsroom ▾

Events



Designing a better built and natural environment

FEATURE STORY / November 13, 2023



Photo courtesy of Gabriela Rogers Marciaga

Gabriela Rogers Marciaga is an architecture student from Panama who will be part of her country's negotiating delegation to COP28, with support from the Global Environment Facility and Climate Reality Project America *Latina*. In an interview, she talked about how she has blended her technical studies with knowledge of the natural world to design and develop projects that can adapt to a changing climate.

How does architecture relate to the environment?

Studying architecture has deepened my interest in both the built and the natural environment. This interest led me to learn how the climate is changing and how the built environment has to adapt to these changes.

Inclusive GEF Assembly award winner shows value of long-term support for nature

FEATURE STORY / November 9, 2023



Photo credit: Environmental Foundation for Africa


Tommy Garnett's vision for restoring the natural beauty of forested land in Sierra Leone has withstood the test of time and civil strife, leading to his organization's recognition in a new Global Environment Facility awards program.

The [Environmental Foundation for Africa](#), which Garnett heads as Executive Director, is one of 23 civil society organizations selected in the [Inclusive GEF Assembly Challenge Program](#) for their community-driven climate and nature projects.

Media Relations



 **REUTERS**® Countries adopt multibillion-dollar fund to protect nature

 **The Guardian** Developed countries urged to 'step up' contributions to global nature fund

 **新华社** XINHUA NEWS AGENCY New global biodiversity fund launched in Vancouver

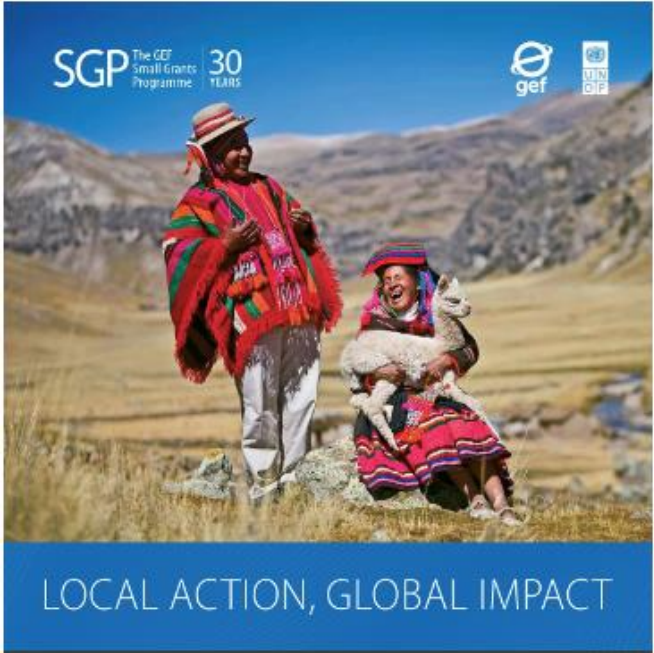
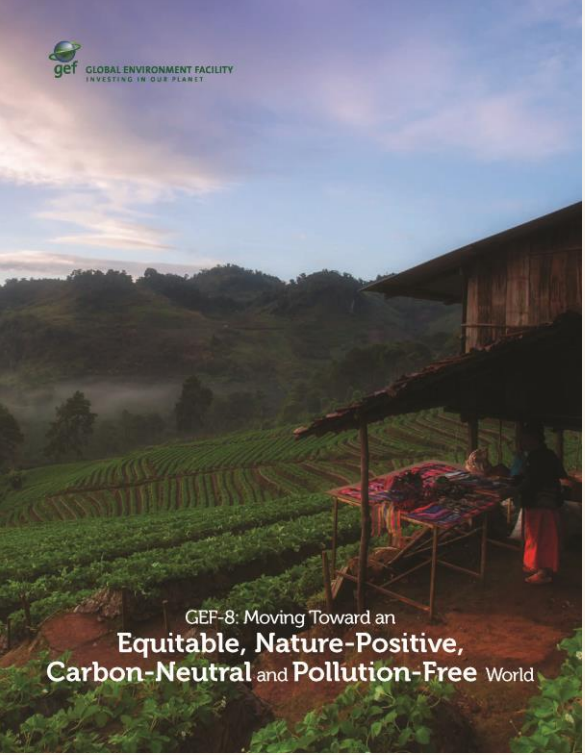
 **POLITICO** Top environmental fund chief calls on countries to defund activities 'destroying' nature

 **Diálogo Chino** Top environmental fund calls for more direct funding to communities

Events and Pavilions



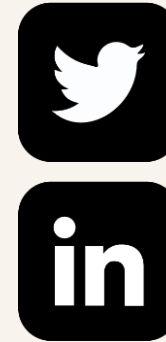
Publications



Social Media



A screenshot of the GEF Facebook profile. The header features a scenic landscape photo of a lake and mountains. The profile name is "Global Environment Facility" with 65K likes and 111K followers. Below the name are navigation tabs: Posts, About, Mentions, Reviews, Followers, Photos, and More. A post from "gef_global_environment" is visible, showing 313 posts, 7,909 followers, and 64 following. Below the post are thumbnails for "WORLD OZONE DAY", a waterfall, and a person speaking at a podium.



A screenshot of the GEF Twitter profile. The header shows the GEF logo and a scenic landscape photo. The profile name is "Global Environment Facility (GEF)" with 1,210 following and 120.9K followers. A pinned tweet from August 24 is visible, announcing the launch of the Global Biodiversity Framework Fund. Below the tweet is a "PRESS RELEASE" card with the headline "New global biodiversity" and an image of a butterfly.

A screenshot of the GEF LinkedIn profile. The header features the GEF logo and a scenic landscape photo. The profile name is "Global Environment Facility" with 91,847 followers. Below the name are navigation tabs: Home, My Company, About, Posts, Jobs, and People. A post is visible with the headline "Cambodian Environment Minister Sophaletteh Eang highlighted a national plan to provide 1 million trees to Cambodian people each year to combat climate change at the opening of a GEF adaptation workshop focusing on Asian Least Devel...". Below the post is a photo of the minister speaking at a podium.

We are on Social Media | Follow and Tag the GEF



Newsletter

www.thegef.org/newsletter



Sampling the fruits of success and innovation in the Maldives

Sometimes the fruits of success taste particularly sweet, as GEF CEO Carlos Manuel Rodríguez discovered on a visit to the Maldivian island of Meedhoo, where he witnessed an effort led by local women to revive a dying culinary art. "This GEF Small Grants Programme project is not only investing in preserving the rich tradition of Bondi-making in the Maldives but, more importantly, in its future generations," said Rodríguez, who later visited two waste-related projects elsewhere in the Addu Atoll. [Read more >>](#)



How to protect ocean life in 2,885 days (or less)

Countries have committed to protecting at least 30 percent of the world's land and sea habitats by 2030. But how? At an event co-hosted by the GEF, World Resources Institute, and High Ambition Coalition for Nature and People during IMPAC5 in Vancouver, people leading, planning, and funding marine protected areas around the world shared ideas about how to make this happen with less than seven years on the clock. [Read more >>](#)



Countries unite to fight hazardous skin lightening products

The governments of Gabon, Jamaica, and Sri Lanka have joined forces to fight back against damaging beauty practices, launching a joint \$14-million project to eliminate the use of mercury in skin lightening products. The project is led by UNEP, with funding from the GEF, and executed by the World Health Organization and the Biodiversity Research Institute. [Read more >>](#)

Visual Identity

www.thegef.org/gef-logo

Brand Guidelines



GEF Full Name with Tagline



GEF Globe and Acronym



The [GEF brand guidelines](#) were updated in April 2023 and replace previous graphic standards. The guidelines establish a system for the consistent usage of the GEF's visual identity: the logo, color scheme, typography, and other graphic elements that enable audiences to easily recognize and identify the GEF brand.

To compliment the [GEF Policy on Communications and Visibility](#), these guidelines also provide the branding guidance for GEF-funded projects and programs to enhance the visibility and design of their communication/outreach materials. Adhering to these rules will contribute to building a clear, simple, positive image of the GEF across communication channels.

GEF Communications Policy and Partnership Approach

<https://www.thegef.org/council-meeting-documents/gef-c-64-11>

Improving the Visibility of the GEF: New Communication and Visibility Policy

1. This document outlines an updated Communication and Visibility Policy for the Global Environment Facility for consideration and adoption by the GEF Council.
2. In order to raise awareness about the GEF and the unique and important role it plays at the heart of international efforts to address pressures on the planet, there is a need to clarify and strengthen policy and guidance about how GEF-funded activities shall be described and promoted across the entire GEF Partnership.
3. The GEF Communication and Visibility Policy, to be applied in conjunction with the updated [Brand Guidelines](#)¹ accompanying the GEF's new logo, covers how and when all recipients of GEF funding shall describe the GEF's role and contribution to project and program outcomes. This includes how the GEF logo shall be used in publications, documents, web pages, in social media, or in other public-facing media.

GEF Communications Contacts



Robert Bisset – Head of Communications



Laura MacInnis – Editorial



Jason Harmala – Website Management and IT Liaison



Christian Hofer – Multimedia, Publications



Alua Kennedy – Digital Services/Social Media



Alexandre Rego – Media Relations



Olivier Besson – Admin and Procurement, Pavilions, Publications



Nitya Mehta Mehta – Social Media



Simon Pollock – Communications Consultant



communications@thegef.org



Questions?