

## Implementing the Four-year Framework of Programme

### Priorities of the CBD through the GEF-7 Programming Directions

GEF SEC Biodiversity Team

Sunday November 17, 2018

CBD COP 14

Sharm El Sheikh, Egypt

# GEF-SEC Biodiversity Team



**Mark Zimsky**  
Senior Biodiversity  
Specialist,  
Biodiversity  
Coordinator, Latin  
America Regional  
Coordinator



**Sarah Wyatt**  
Biodiversity Analyst  
SIDS regional team, Latin  
America regional team,  
Indigenous Peoples,  
Invasive Alien Species



**Hannah Fairbank**  
Senior  
Biodiversity  
Specialist,  
Asia Regional  
Coordinator,  
Biodiversity and  
Business,  
Private Sector



**Jaime Cavellier**  
Senior Biodiversity  
Specialist,  
Africa and Latin  
America regional  
teams, biosafety,  
ABS, Illegal  
Wildlife Trade  
Program Lead







## Outline:

- 1) Guidance from COP-13
- 2) Programming Options
- 3) GEF-7 BD strategy
- 4) International Waters FA
- 5) Impact Programs
- 6) Results
- 7) Q & A



# CBD Four-year Framework of Program Priorities for the GEF's 7<sup>th</sup> replenishment period (2018-2022):

---

- Decision CBD/COP/DEC/XIII/21
- The Four-year Framework includes specific objectives and program priorities to be addressed during GEF-7





# CBD Four-year Framework of Program Priorities for the GEF's 7<sup>th</sup> replenishment period (2018-2022):

*“Encourages the Global Environment Facility to continue and **further strengthen integrated programming** as a means to harness opportunities for synergy in implementing related multilateral environmental agreements as well as the 2030 Agenda for Sustainable Development and its Sustainable Development Goals, in particular Sustainable Development Goals 14 and 15.”*



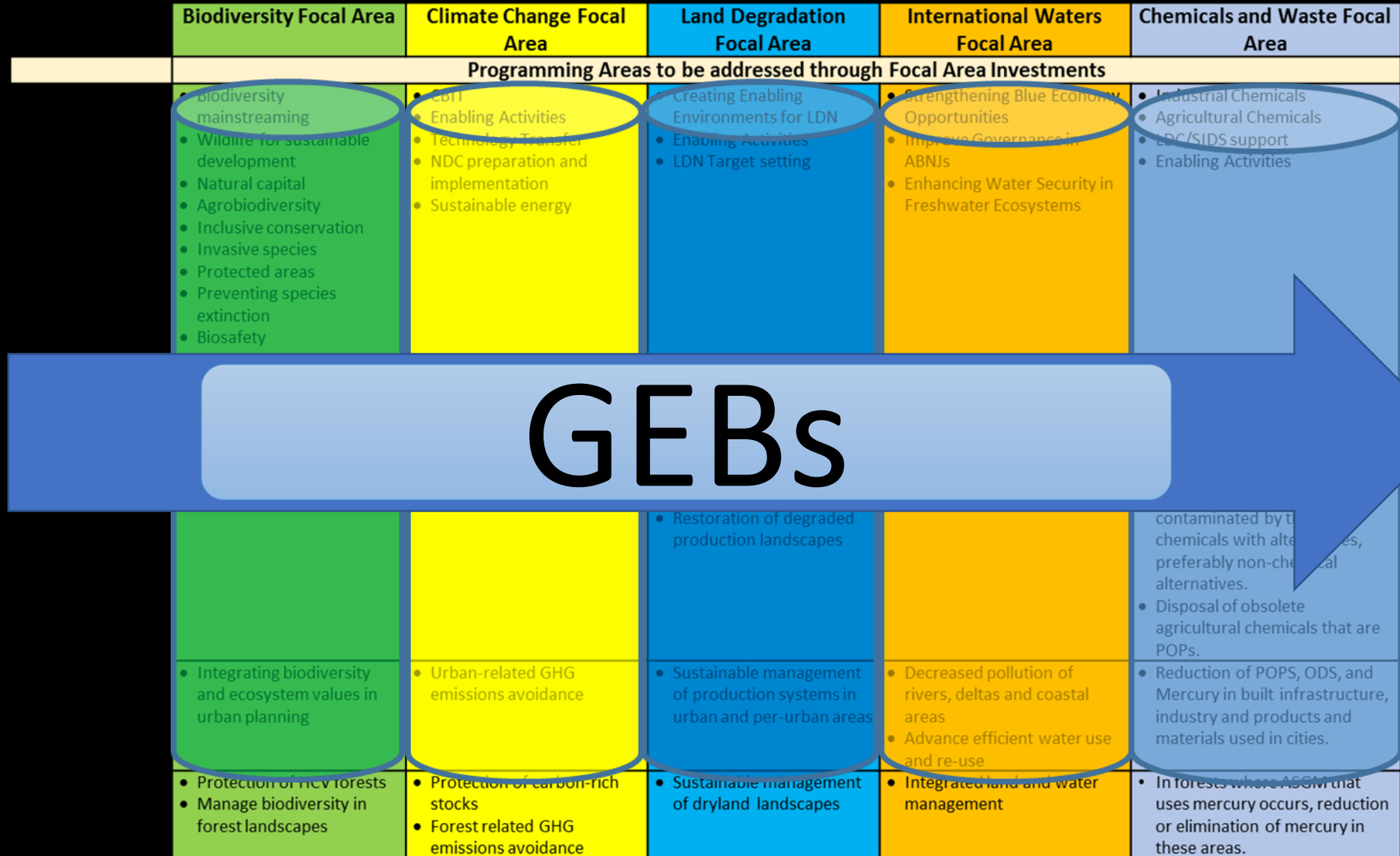
# GEF-7 Biodiversity Focal Area Goal:

*To maintain globally significant biodiversity in landscapes and seascapes*

## Objectives:

- 1) Mainstream biodiversity across sectors as well as landscapes and seascapes
- 2) Address direct drivers to protect habitats and species
- 3) Further develop biodiversity policy and institutional frameworks.

# GEF-7 Programming Framework



Collectively, multiple GEF-7 Impact Programs and Focal Areas will contribute to achieving this goal and three objectives of the biodiversity focal area strategy, including:

- Biodiversity Focal Area investments
- International Waters Focal Area investments
- Sustainable Forest Management Impact Program
- Food Systems, Land Use, and Restoration Impact Program
- Sustainable Cities Impact Program



# 1) Mainstream biodiversity across sectors as well as within production landscapes and seascapes

---

- Biodiversity Mainstreaming in Priority Sectors
- Global Wildlife Program (IWT and Wildlife and Tourism)
- Natural Capital Assessment and Accounting
- Sustainable Use of Plant and Animal Genetic Resources
- Inclusive Conservation







## 2. Address direct drivers to protect habitats and species

---

- Prevention, Control and Management of Invasive Alien Species
- Improving Financial Sustainability, Effective Management, and Ecosystem Coverage of the Global Protected Area Estate



### 3. Further develop biodiversity policy and institutional framework framework

- Biosafety
- Access and Benefit Sharing of Genetic Resources
- Enabling Activities





# International Waters Focal Area

- 1) Strengthening **Blue Economy** opportunities
- 2) Improve governance in the **Areas Beyond National Jurisdiction (ABNJ)**
- 3) Enhance water security in **freshwater ecosystems**



# Sustainable Forest Management: Overview

Focus on globally important forests

Amazon  
Forest

Congo Basin  
Forest

Dryland  
Forests

Require regional, ecosystem-scale approach to  
maintain integrity of the entire Biome



# Sustainable Forest Management: Overview



- Creating a better enabling environment for forest governance
- Supporting rational land use planning across mixed-use landscapes
- Strengthening of protected area systems (finance, representativeness, capacity)
- Clarifying land tenure and other relevant policies
- Supporting the management of commercial and subsistence agriculture lands to reduce pressure on adjoining forests
- Utilizing financial mechanisms and incentives for sustainable forest utilization such as markets, REDD+ and other PES





## **Food Systems, Land Use and Restoration** *Achieving Transformational Shift – “Sustainability”*

- **Efficient and effective** food value chains for multiple benefits
- **Removing deforestation** from supply chains
- **Expand restoration** of degraded lands



# GEF-7 FOLUR Strategy

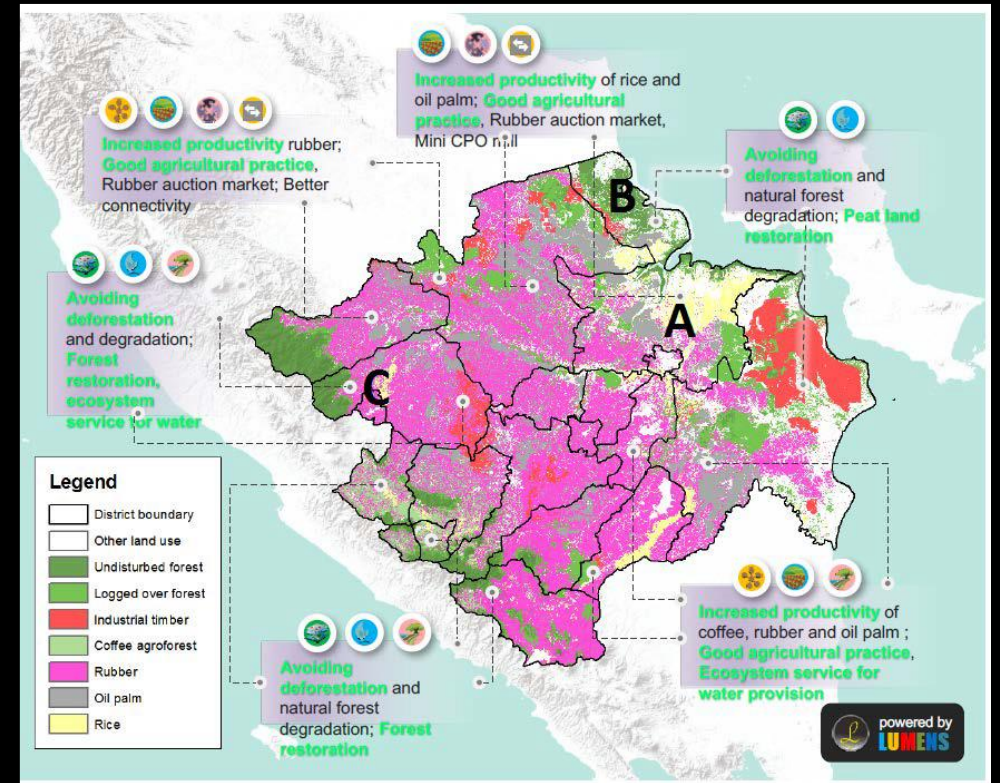
## Key priorities for GEF financing:

- Ability and potential to produce GEBs
- Spatially explicit geographies defined on basis of their global importance for commodities, food production, and restoration of ecosystem services
- Established supply or value chains



# Spatially explicit geographies

- Evidence of environmental threats (*commodity driven deforestation, unsustainable agricultural systems, biodiversity loss etc.*)
- Evidence of commitment to promote sustainability in the supply or value chain
- Potential for applying a comprehensive land use approach – *linking production, conservation, and restoration at scale*



## Focus on **Comprehensive Land Use Planning**

- To balance demands for increased food production with potential for harnessing ecosystem services
- Improve targeting of landscapes for delivering integrated solutions at scale



# Established Supply / Value Chain



## Financial Transactions

# Mapping of GEBs

## Biodiversity (BD) GEBs

- Agricultural destruction of **intact, biodiverse habitat** avoided
- Threats to **on and off-farm biodiversity** reduced through **agroecological practices**
- Threatened **agrobiodiversity** conserved and sustainably used

## Climate Change Mitigation (CCM) GEBs

- Land-use and value chain-based **GHGs sequestered**
- Land-use and value chain-based **GHGs avoided**

## Land Degradation (LD) GEBs

- New **land degradation** avoided
- Degraded production **landscapes restored**

## Chemicals and Waste (CW) GEBs

- **Pollution from POPs and HHPs** in global food supply reduced

# GEF-7 Sustainable Cities Impact Program (IP)

- Integrated approach to invest in cities to generate global environmental benefits.
- Multi-scale partnerships— *Global Platform, National level frameworks, Cities / Municipalities* for scaled up results
- Cross-sector engagement to ensure results at all levels and for all stakeholders

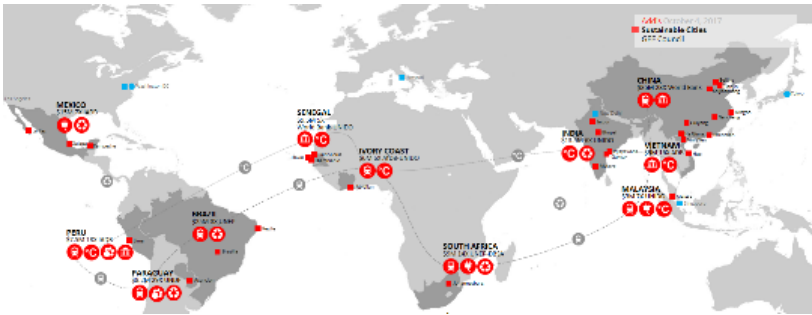




# GEF-6 Sustainable Cities Integrated Approach Pilot



## City-level Projects (28 cities, 11 countries)



Phase I Sectors  
for integration



Transport



Energy



Solid Waste Conservation



Climate Change



Governance





# GEF 7 APPROACH

*Building on GEF 6*

To achieve scaled up results and transformational impact, IP will:

- Promote innovative business models for integrated solutions and investments
- Strengthen the global platform to crowd-in more stakeholders
- Create enabling environment and consideration of cross cutting issues of gender and inclusion



# GEF-7

## Categories of Investment

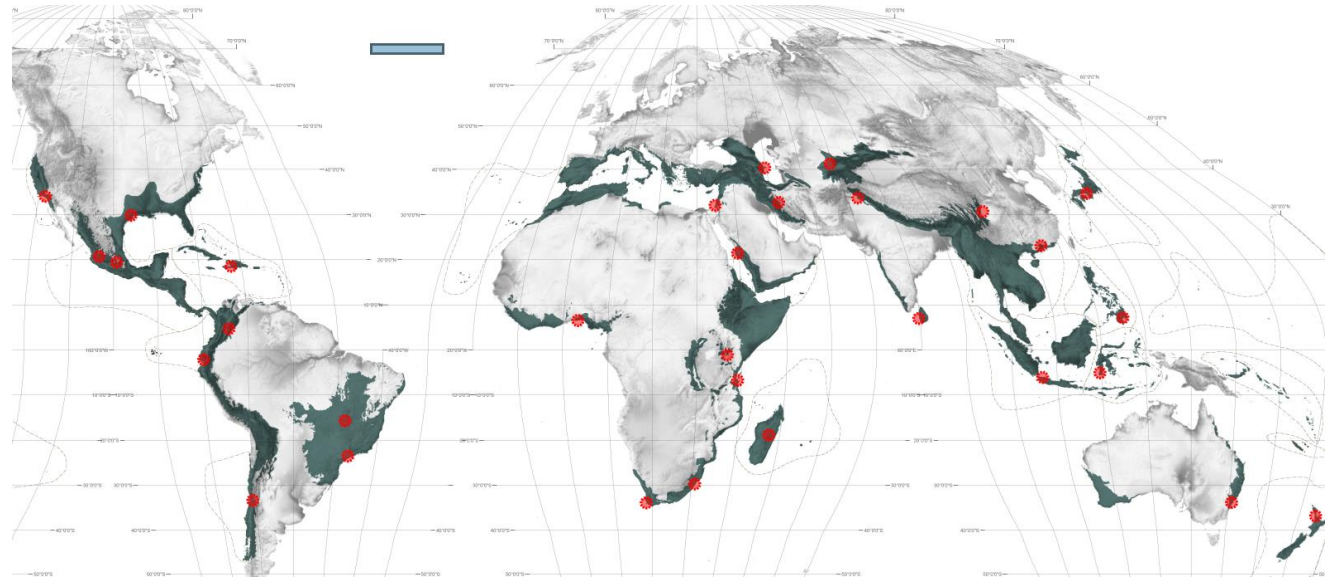


- **Evidence-based Spatial Planning**—National, Regional, Local
- **Decarbonizing Urbanization with Infrastructure Integration** at National, Regional, and Local Scales
- **Building Deep Resilience** with smart systems and slum solutions
- **Cascade Financing Solutions** for Urban Sustainability



## Key Global Environmental benefits for GEF-7 SC IP

- **Climate Change Mitigation-** Decarbonization of cities through low carbon solutions
- **BD and LD:** Integrated land use planning to prevent habitat loss/degradation in peri-urban areas
- **Food system:** Integrated land use planning to prevent agricultural land loss; logistics/transport system for food distribution
- **Marine plastics:** employing a circular economy approach that addresses material and design engineering; consumer use; and recovery and recycling
- **Resilience:** Urban design that is able to absorb potential shocks



32 cities in the world's biological hotspots

# GEF-7 Results Architecture and Targets

CORE INDICATOR	TARGET
Terrestrial protected areas created or under improved management for conservation and sustainable use (million hectares)	200
Marine protected areas created or under improved management for conservation and sustainable use (million hectares)	8
Area of land restored (million hectares)	6
Area of landscapes under improved practices (million hectares; excluding protected areas)	320
Area of marine habitat under improved practices to benefit biodiversity (million hectares; excluding protected areas)	28
Greenhouse Gas Emissions Mitigated (million metric tons of CO <sub>2</sub> e)	1500
Number of shared water ecosystems (fresh or marine) under new or improved cooperative management	32
Globally over-exploited marine fisheries moved to more sustainable levels ( thousand metric tons)	3500
Reduction, disposal/destruction, phase out, elimination and avoidance of chemicals of global concern and their waste in the environment and in processes, materials and products (thousand metric tons of toxic chemicals reduced)	100
Reduction, avoidance of emissions of POPs to air from point and non-point sources (grams of toxic equivalent gTEQ)	1300
Number of direct beneficiaries disaggregated by gender as co-benefit of GEF investment	Monitored



# GEF-7 BD Corporate Targets-Core Indicators

	Core Indicators	Unit of Measure	GEF-6 Target	GEF-7 Target
1	Terrestrial protected areas created or under improved management for conservation and sustainable use	Mha		200
2	Marine protected areas created or under improved management for conservation and sustainable use	Mha		8
3	Area of land restored	Mha		6
4	Area of landscapes under improved practices	Mha		320
5	Area of marine habitat under improved practices to benefit biodiversity	Mha		28
	Total area under improved management (sum of indicators 1 through 5)	Mha	420	562

# Q & A

---





A lush tropical forest scene featuring a waterfall cascading down a rocky cliff, surrounded by dense green foliage and palm trees. The waterfall is the central focus, with water spraying at the base. To the right, a tall palm tree with a large, round, yellowish-brown frond is visible. The overall atmosphere is serene and natural.

Thank you.

For more information:

[www.thegef.org](http://www.thegef.org)

[mzimsky@thegef.org](mailto:mzimsky@thegef.org)