



GLOBAL ENVIRONMENT FACILITY
INVESTING IN OUR PLANET

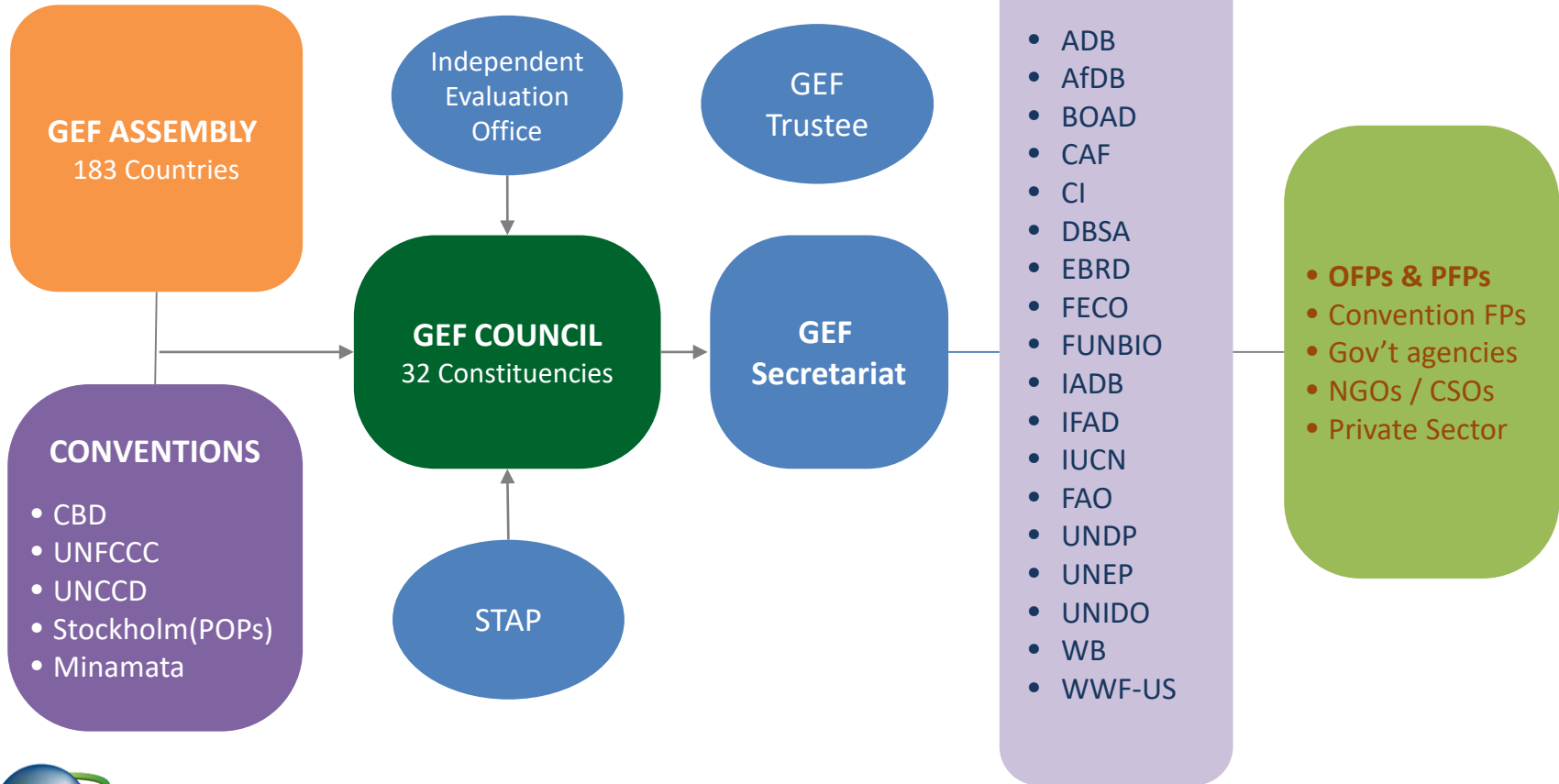
www.theGEF.org

GEF Project & Program Cycle & Key Policies

GEF-7 National Dialogue in the Gambia

January 28-29, 2019

GEF Partnership



GLOBAL ENVIRONMENT FACILITY
INVESTING IN OUR PLANET

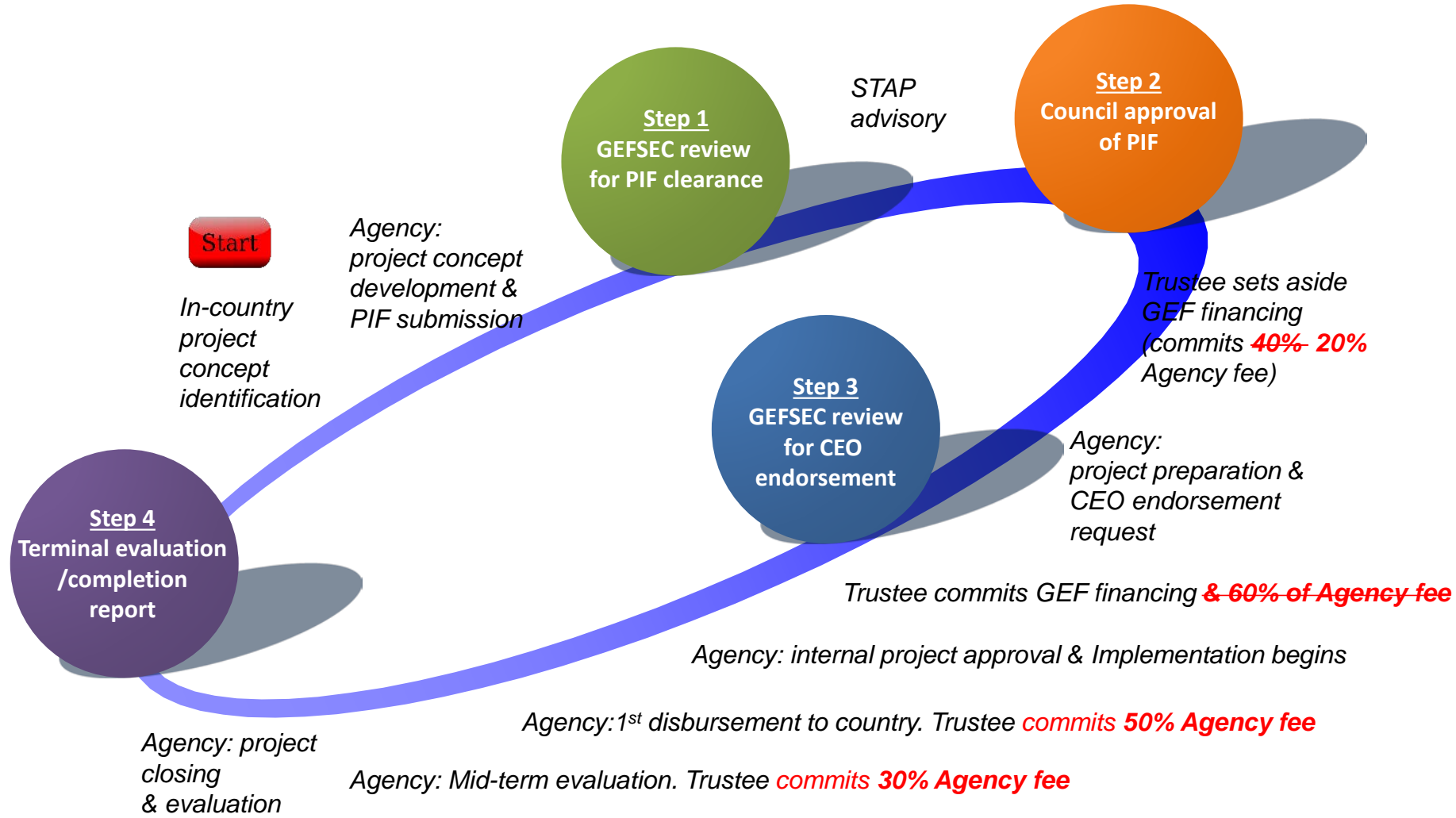
GEF Project Modalities

- **Full-Sized Project (FSP):** financing over US\$2M
- **Medium-Sized Project (MSP):** financing of US\$2 or less
- **Program:** a longer term and strategic arrangement of individual yet interlinked projects that aim at achieving large-scale impacts on the global environment
- **Enabling Activity (EA):** preparation of a plan, strategy or report to fulfill commitments under a Convention



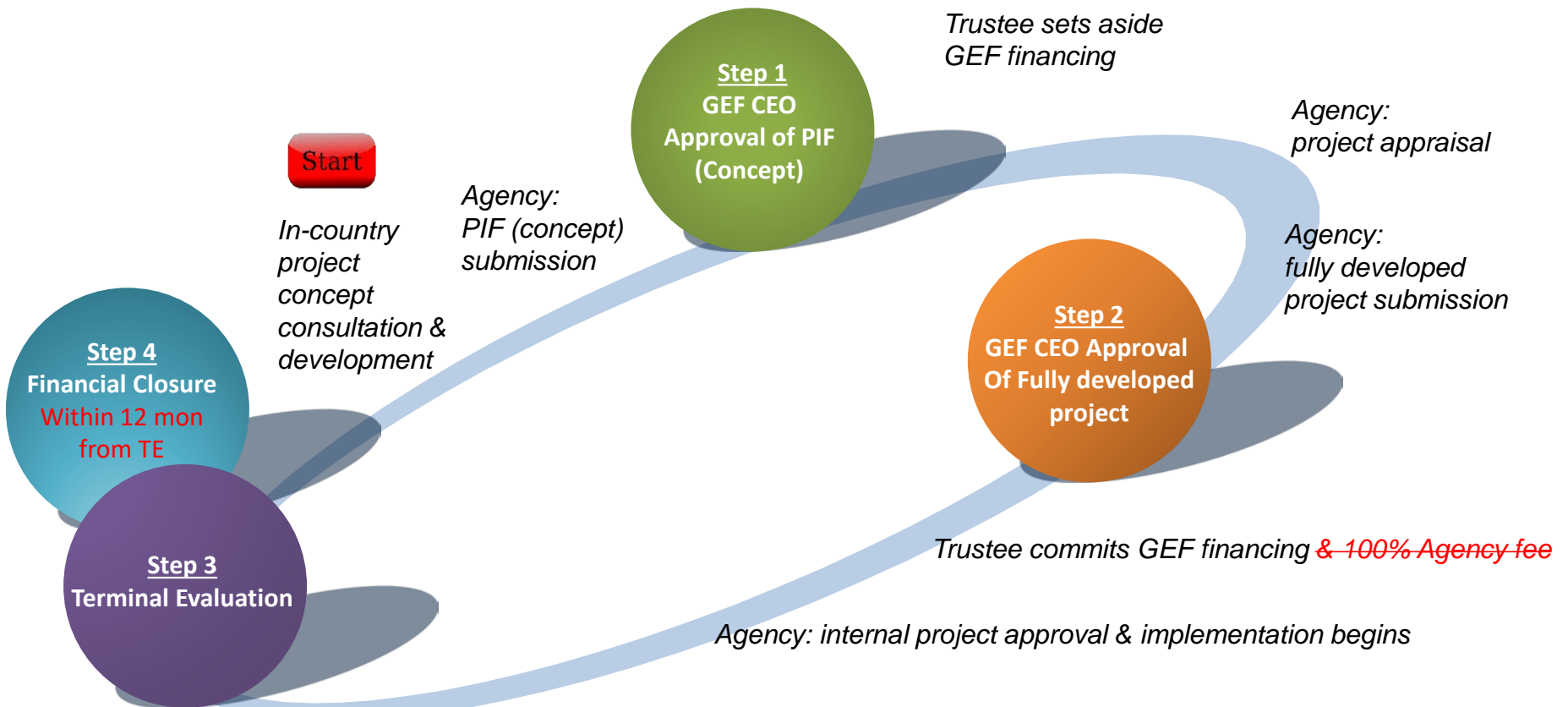
GLOBAL ENVIRONMENT FACILITY
INVESTING IN OUR PLANET

Full-Sized Project Cycle



GLOBAL ENVIRONMENT FACILITY
INVESTING IN OUR PLANET

Medium-Sized Project (2 step approval)



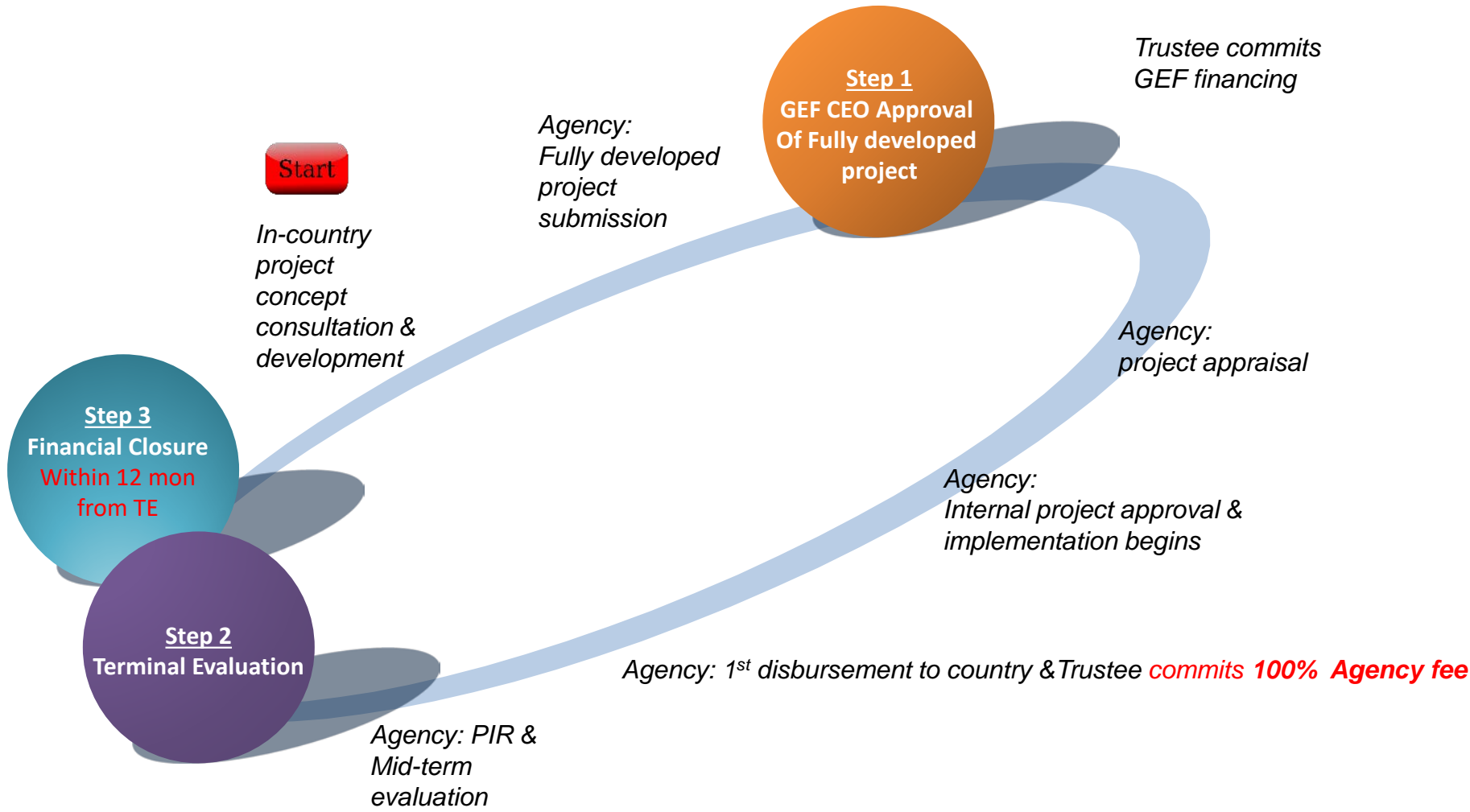
Agency: PIR & Mid-term evaluation

*Agency: 1st disbursement to country & Trustee **commits 100% Agency fee***



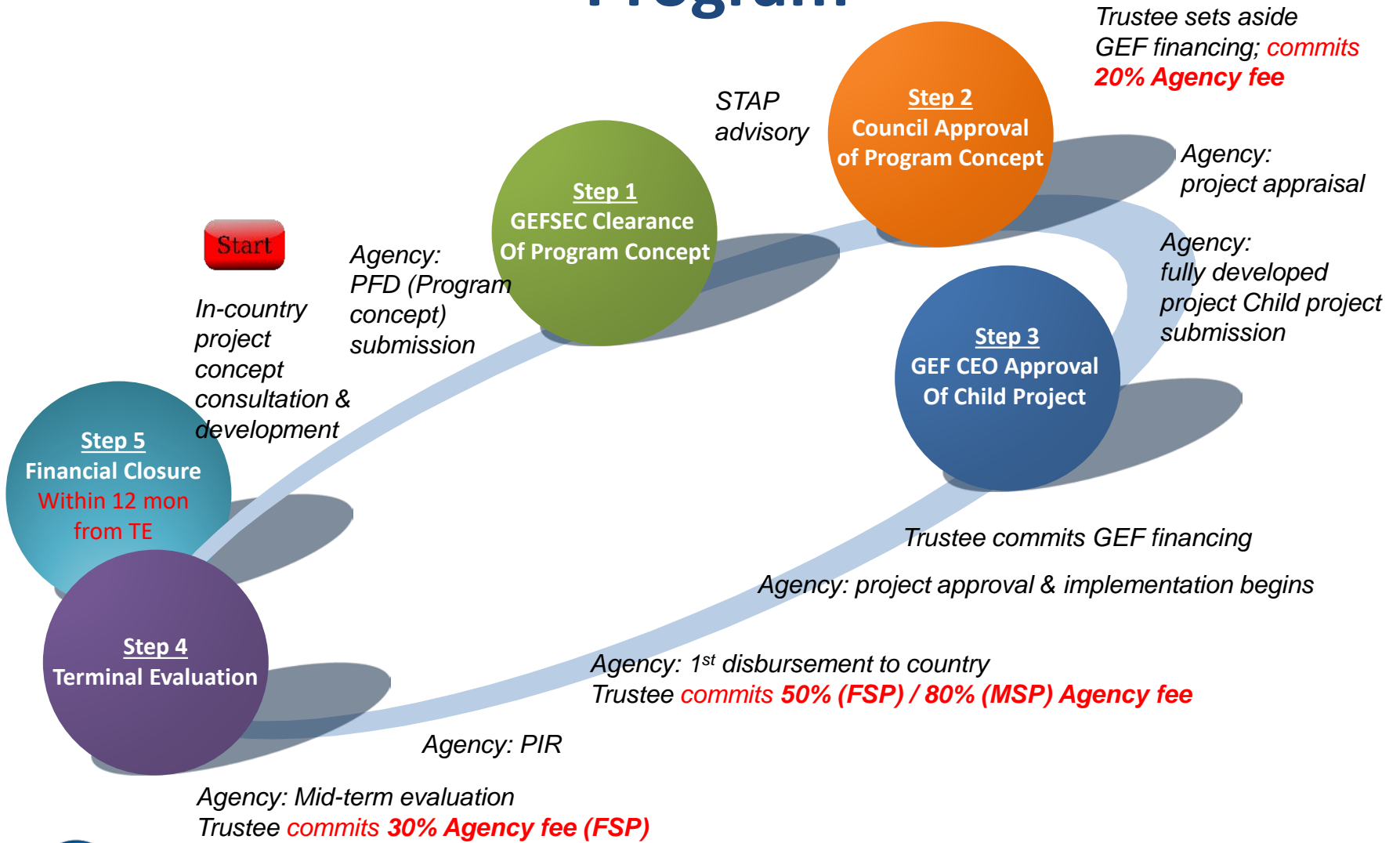
GLOBAL ENVIRONMENT FACILITY
INVESTING IN OUR PLANET

Medium-Sized Project (1 step)



GLOBAL ENVIRONMENT FACILITY
INVESTING IN OUR PLANET

Program



GLOBAL ENVIRONMENT FACILITY
INVESTING IN OUR PLANET

GEF-7 policies focus

The **Policy Recommendations for GEF-7** are aimed at enhancing the effectiveness and efficiency in the following areas:

- resource allocation
- optimizing the use of GEF resources in different countries
- Results
- Partnership
- Governance
- private sector engagement
- operational efficiency and transparency (fees & cancellation)
- improved management of data and information
- gender equality
- knowledge management, and
- responsible investment strategy
- [Practical Steps to Improve Coordination and Workflow in the GEF Partnership](#)



GLOBAL ENVIRONMENT FACILITY
INVESTING IN OUR PLANET

Key GEF-7 Policies

Project identification	Concept submission (PIF/PFD)	Fully developed project (CEO approval/endorsement)	Implementation (PIF, MTR, TR)
<h2>Gender Equality Policy</h2> <p>53rd Council Meeting, https://www.thegef.org/council-meeting-documents/policy-gender-equality</p>			
<p>Meaningful consultations w/ stakeholders on the proposed project/program, early screening</p>	<p>Indicative info on gender considerations & any measures to address these, including process to collect sex-disaggregated data & gender info</p>	<ul style="list-style-type: none"> (a) Gender analysis or equivalent socio-economic assessment that identifies and describes any gender differences, gender differentiated impacts & risks, and opportunities to address gender gaps and promote the empowerment of women, as relevant to the proposed activity (b) Any corresponding gender-responsive measures to address differences, identified impacts & risks, and opportunities through a gender action plan or equivalent (c) If gender-responsive measures have been identified, results framework or logical framework with actions, gender-sensitive indicators & sex-disaggregated targets 	<p>Annual reporting on, including through PIRs, mid-term reviews, and terminal evaluations on progress and results</p>



Project identification	Concept submission (PIF/PFD)	Fully developed project (CEO approval/endorsement)	Implementation (PIF, MTR, TR)
------------------------	------------------------------	--	-------------------------------

Stakeholder Engagement Policy

<https://www.thegef.org/council-meeting-documents/policy-stakeholder-engagement> (53rd CM)

<p>Meaningful consultations w/ stakeholders on the proposed project/program, early screening</p>	<p>Indicative info on stakeholder engagement, including any consultations conducted during project development, as well as information on how Stakeholders will be engaged in the project/ program, and means of engagement</p>	<p>Stakeholder engagement plans or equivalent, with stakeholders who have been and will be engaged, means of engagement, dissemination of information, roles and responsibilities, resource requirements, and timing throughout the project cycle</p>	<p>Annual reporting on, including through PIRs, mid-term reviews, and terminal evaluations on progress, challenges and outcomes</p>
--	---	---	---

Environment & Social Safeguard Policy (in draft)

<https://www.thegef.org/documents/environmental-and-social-safeguard-standards>

<p>Meaningful consultations w/ stakeholders on the proposed project/program, early screening</p>	<p>Indicative info on any environmental and social risks and potential impacts associated with the proposed project/ program; and any measures to address these</p>	<p>Additional information on relevant risks and impacts, and measures to address these, including any assessments carried out, and any environmental and social management plans or the equivalent</p>	<p>Reporting at mid-term and completion on the implementation of relevant environmental and social management measures</p>
--	---	--	--

Co-financing Policy

<http://www.thegef.org/council-meeting-documents/updated-co-financing-policy> (54th CM)

	<p>Indicative information on the expected amounts, sources and types of co-financing, and the sub-set of such co-financing that meets the definition of "investment mobilized"</p>	<p>Confirmed information on the expected amounts, sources and types of co-financing and "investment mobilized", with supporting evidence</p>	<p>Reporting at mid-term and completion on actual amounts, sources and types of co-financing and investment mobilized</p>
--	--	--	---

Co-Financing Policy

- Co-Financing: financing that is additional to GEF financing (excludes recurrent expenditures)
- Overall GEF portfolio: at least **7:1**
- Upper-Middle Income Countries and High-Income Countries - **that are not Small Island Developing States or Least Developed Countries** - at least **5:1**



GLOBAL ENVIRONMENT FACILITY
INVESTING IN OUR PLANET

Co-Financing in the Gambia

	Number of projects	GEF Grant w/o agency fee (\$million)	Co-Finance (\$ million)	Ratio of Co-Financing
GEF - 1	3	0.4	0	0
GEF - 2	4	1.7	0.9	0.5
GEF - 3	2	0.3	0.0	0.1
GEF - 4	5	8.5	22.8	2.7
GEF - 5	9	29.4	111.4	3.8
GEF - 6	5	20.6	44.5	2.2
Total	28	61.0	179.7	2.9



Changes to STAR

As of July 1, 2018

- Increasing flexibility – full flexibility retained for countries with allocations \leq US\$7m; **for others (The Gambia), marginal adjustments of up to 15% of total allocation**
- Adjustments to the minimum allocation floors in each focal area (\$m):

	Non-LDCs		LDCs (The Gambia)	
	GEF-6	GEF-7	GEF-6	GEF-7
Biodiversity	1.5	2	2	3
Climate Change	2	1	3	1.5
Land Degradation	0.5	1	1	1.5
Aggregate Floor	4	4	6	6

GEF-7 STAR Allocation for The Gambia (\$m)

Climate Change	1.50
Biodiversity	3.00
Land Degradation	5.33
Total	9.83
Fully Flexible	no
Marginal Adjustment*	2.00

- Other windows – IW, C&W, NGI
- Impact Programs



GEF Small Grants Programme (SGP)

- Implemented by the UNDP since 1992
- Only window for CSOs/CBOs
- Decentralized structure
 - Decision making body: NSC- participating countries
 - National Steering Committees (NSC) supported by Technical Advisory Groups (TAGs)

Core Funding: \$128 M for GEF-7

Countries < \$15 M in STAR:

Up to 10% of STAR



GLOBAL ENVIRONMENT FACILITY
INVESTING IN OUR PLANET



Size of SGP Grants

- Planning Grants-Maximum \$5K
- Regular Grants-Maximum \$50K
- Strategic Grants-Maximum \$150K
- Global/Regional Grants: \$250k to 500k
- Innovation Programme



GEF-7 Country Support Program (CSP)

Objective: Strengthen capacity of GEF recipient country Focal Points, Convention Focal Points, civil society and GEF Agencies to understand the GEF policies and programming strategy; assist recipient countries with use of GEF resources effectively and efficiently

CSP Tools:

- National Dialogues (National Level)
- Workshops (Multilateral level)
- Constituency Meetings
- Introduction Seminars
- Pre-Council Meetings for Recipient Country Council Members & Alternates



GLOBAL ENVIRONMENT FACILITY
INVESTING IN OUR PLANET