



GLOBAL ENVIRONMENT FACILITY  
INVESTING IN OUR PLANET

[www.theGEF.org](http://www.theGEF.org)

# Sustainable Forest Management

Ian Gray  
Natural Resources

GEF Familiarization Seminar  
Washington, DC  
January, 2013

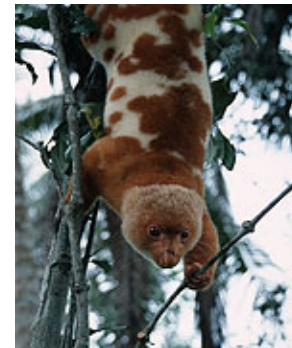
# GEF's Investment In Forests

- The GEF is the only funding mechanism that operates under the combined framework of the three conventions dealing with forest ecosystems
- The GEF has been funding forest projects since its inception in 1991
  - 330 forest-related projects in 100+ countries
  - \$1.7 billion GEF funding with \$7.4 billion co-finance
- GEF-5 target of \$1 billion invested in forests
- Multi-functions of forests are at core of investment strategy

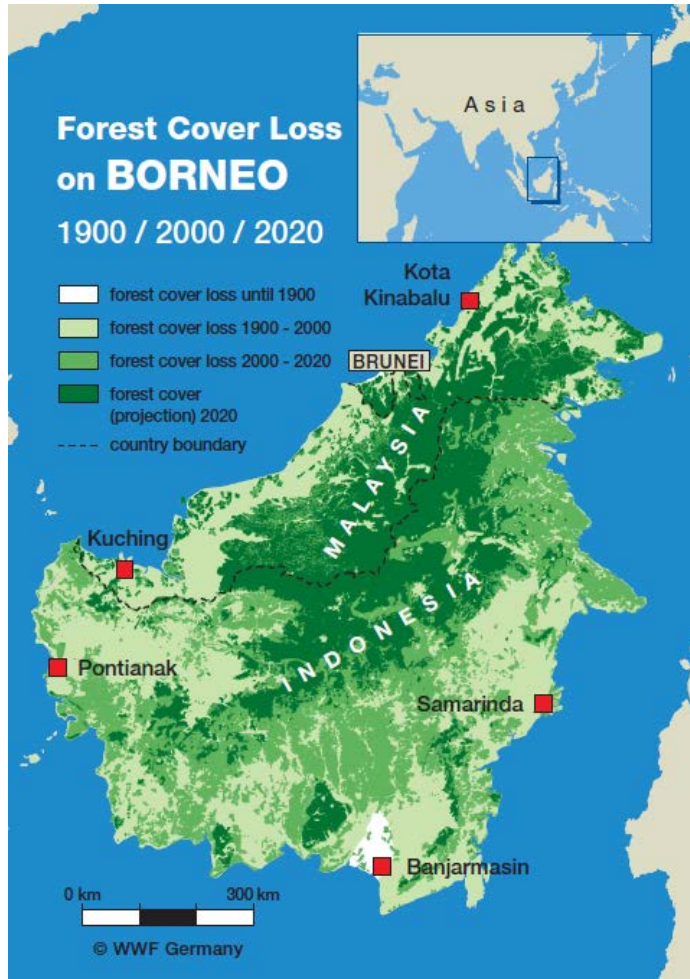


# Why SFM?

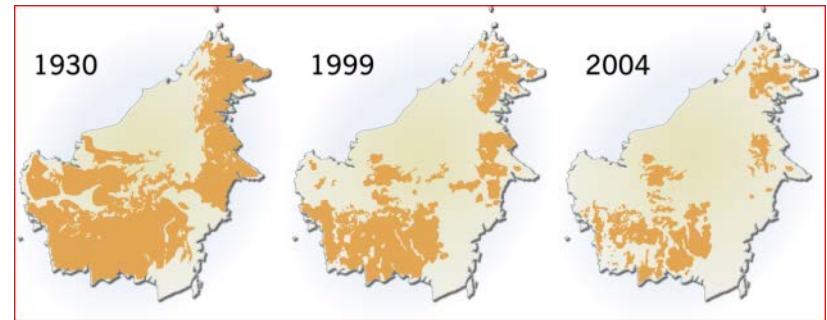
- **Unique opportunities for multiple environmental and social benefits**
  - **CLIMATE CHANGE:** Slowing tropical deforestation can play an important role in mitigating climate change.
  - **BIODIVERSITY:** Forests harbor over 60% of all terrestrial plant and animal species.
  - **LAND DEGRADATION:** Forests provide livelihoods and vital environmental services to hundreds of millions of people.



# Why SFM Now?



## Orang Utan Distribution



From UNEP GRID ARENAL



# Sustainable Forest Management



# GEF-5 SFM/REDD+ Strategy

- Building on GEF-4 and Tropical Forest Account
- GEF-5 independent SFM/REDD+ strategy

**Goal** Achieve multiple environmental benefits from improved management of all types of forests




**Impacts** Effective provisioning of forest ecosystem services and strengthened livelihoods of people dependent on the use of forest resources

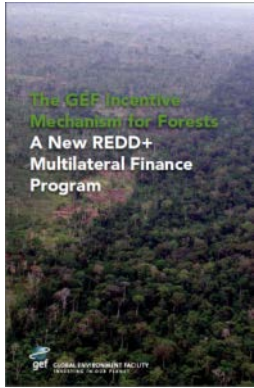


# GEF-5 SFM/REDD+ Incentive Mechanism



STAR Resources

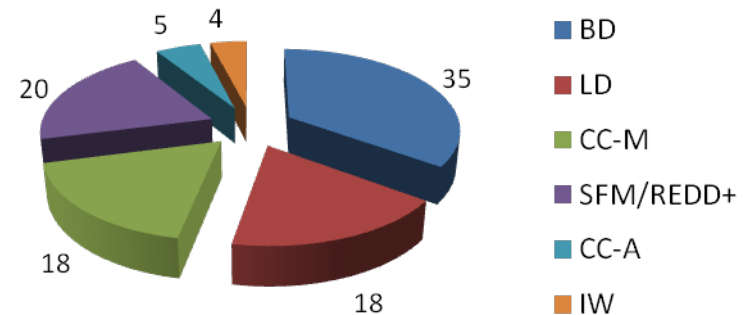
- BD 
- CC 
- LD 



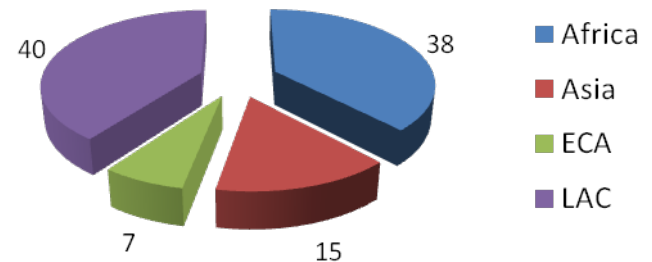
# SFM/REDD+ Projects 2010-12

- 35 projects and 3 programs
- \$420 million GEF funding
- 40% of \$250 million incentive allocated
- Landscape interventions

Focal Area Funding

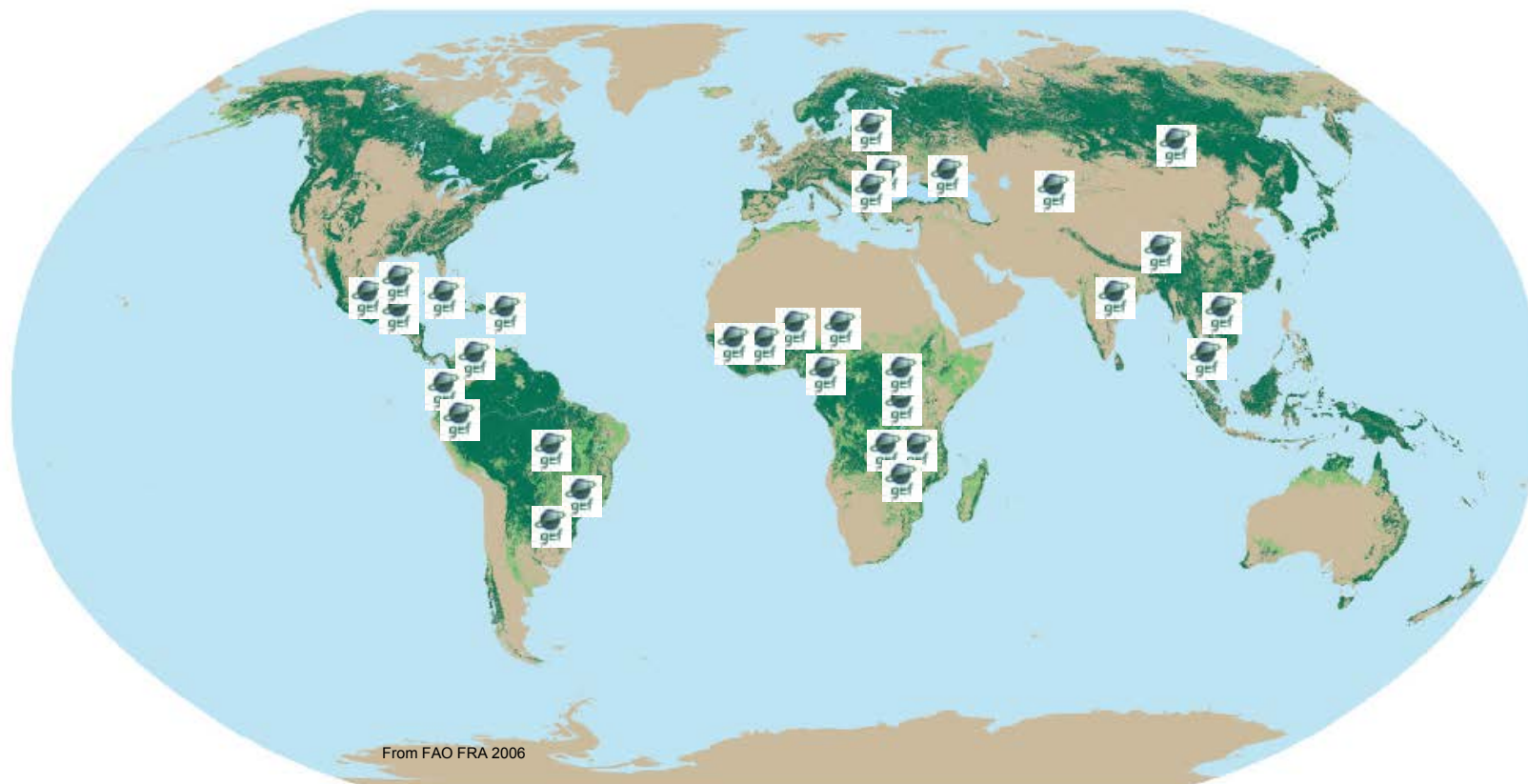


Funding for regions





# GEF-5 SFM/REDD+ Projects



**GLOBAL ENVIRONMENT FACILITY**  
INVESTING IN OUR PLANET

# Thank you for your attention

## Questions?



GLOBAL ENVIRONMENT FACILITY  
INVESTING IN OUR PLANET