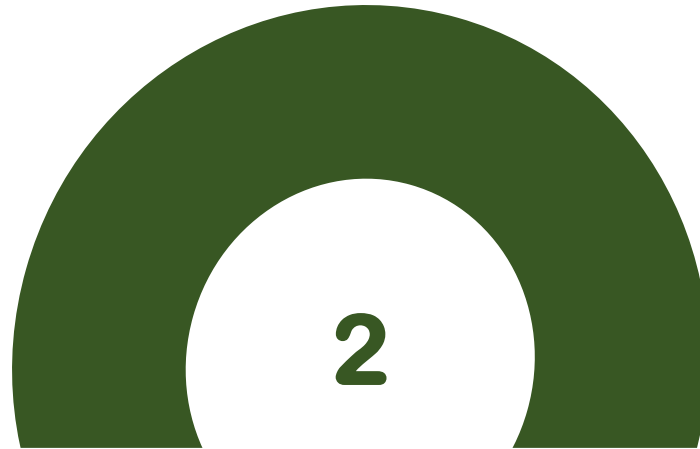




## GEF Approaches



**Stakeholder  
Engagement**



**Gender Equality &  
Women's Empowerment**



**Environmental &  
Social Safeguards**

1.



**Stakeholder Engagement**



## GEF 's Approach to Stakeholder Engagement

*GEF's operational policies "shall provide for full disclosure of all non-confidential information, and consultation with, and participation as appropriate of, major groups and local communities, throughout the project cycle."*

*(Paragraph 5 of GEF Instrument)*



# Process for an Updated Policy on Stakeholder Engagement

1994

GEF Instrument  
(Full disclosure,  
consultation and  
participation)

1996

Policy on Public  
Involvement  
(Public Involvement is  
crucial to success of  
GEF Projects)

2014

CSO Network  
review of policy  
GEF Guidelines

2015 - 2017

Working Group on  
Public Involvement  
Review draft policy  
and Consultations

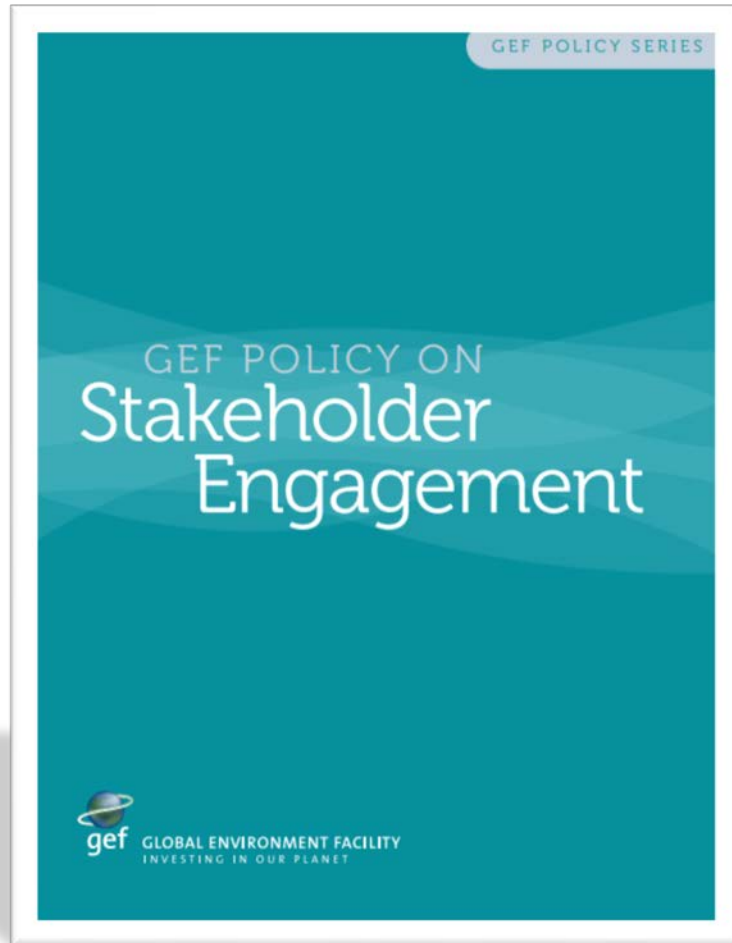
2017

Internal and  
External  
Consultations –  
Website (public)

**Nov 2017**

**Policy  
on  
Stakeholder  
Engagement**

# Updated Policy on Stakeholder Engagement



## *Objective*

Promote the **inclusive and meaningful participation** of Stakeholders in GEF's governance and operations in support of the GEF's mandate to protect the global environment.



# GEF's Policy on Stakeholder Engagement

## Core Principles

- Constructive, responsive, accountable and transparent**
- Fair, balanced, and inclusive** participation
- It applies to **all GEF-financed activities**
- Sustained commitment and action**, including allocation of resources
- Supported by appropriate documentation and **easy and timely access to information**

**Meaningful Consultation** means a two-way process, that:

- (a) Begins early in project or program planning process to gather initial views on the project or program proposal and inform design
- (b) Encourages Stakeholder feedback, particularly as a way of informing project or program design and Stakeholder Engagement in identification and mitigation of Env'tl and Social Risks and Impacts;
- (c) Is carried out on a continuous basis, as Environmental and Social Risks and Impacts arise;

## Meaningful Consultation (cont'd)

(d) Is based on the prior disclosure and dissemination of relevant, transparent, objective, meaningful and easily accessible information in a timeframe that enables consultations with Stakeholders in a culturally appropriate format, in relevant local language(s), and is understandable to Stakeholders;

(e) Considers and responds to feedback;

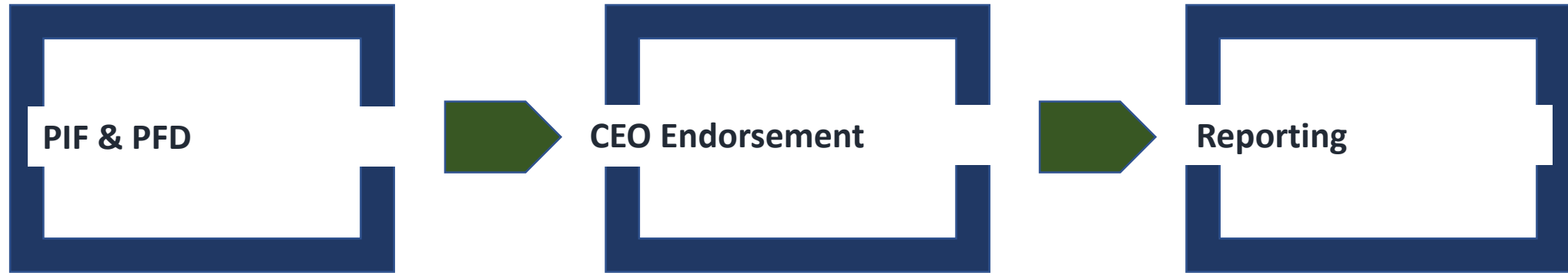
(f) Supports active and inclusive engagement with project-affected parties;

(g) Is free of external manipulation, interference, coercion, discrimination, and intimidation; and (h) Is documented and disclosed by the executing agency



# Overview of Policy Requirements

## Project and Program Cycle Requirements



- ✓ Description of any consultations conducted during project development\*

- ✓ Information on how Stakeholders will be engaged and means of engagement throughout the project cycle

\* (preparation of the PIF)

- ✓ Provide Stakeholder Engagement Plans \* or equivalent documentation

**\* Stakeholder Engagement Plan**

- Stakeholders who have been and will be engaged
- means of engagement
- dissemination of information
- roles and responsibilities
- resource requirements
- timing of engagement

- ✓ Include information in PIRs, MTRs, TEs on progress, challenges and outcomes of the implementation of stakeholder engagement



## Overview of GEF Secretariat's Responsibilities

### Secretariat-led Activities

- Engage with stakeholders in a **transparent and inclusive manner** aimed at **fair representation**
- Provide for appropriate stakeholder engagement in the **development of GEF policies, guidelines and strategy**



## Guidelines for the Implementation of the Policy

**Guidelines** provide guidance and information on how to implement the Policy, including best practices and useful tools that can be used to conduct meaningful stakeholder engagement throughout the GEF program and project cycles.

[https://www.thegef.org/sites/default/files/council-meeting-documents/EN\\_GEF.C.55\\_Inf.08\\_Guidelines\\_Stakeholder\\_Engagement.pdf](https://www.thegef.org/sites/default/files/council-meeting-documents/EN_GEF.C.55_Inf.08_Guidelines_Stakeholder_Engagement.pdf)



## **Stakeholder Engagement**

**for further information please contact  
Pilar Barrera Rey  
Senior Operations Officer, Partnerships  
Partnerships Coordinator**

[pbarrera@thegef.org](mailto:pbarrera@thegef.org)

2.



**Gender Equality and  
Women's Empowerment**

# Gender and the Environment

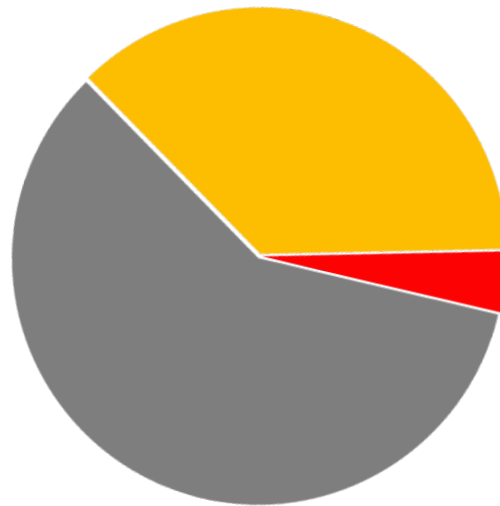
Compared to men, women

- are more absent in decision making
- have less access to and control over land and natural resources
- have less access to markets, financing and credit

43%

Globally, 43% of agricultural laborers are women, but only 20% of land has female ownership

Unequal access to land



37%

## EQUAL LAND RIGHTS:

The law guarantees the same rights to own, use and control land to both women and men.

4%

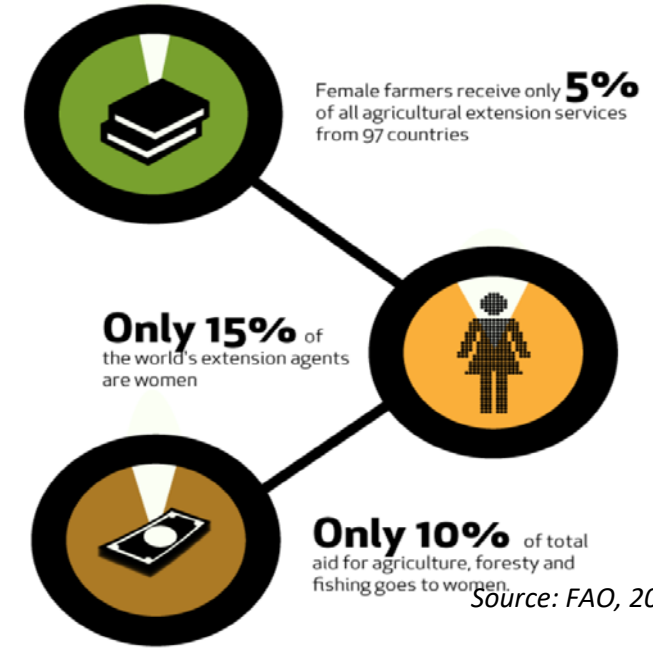
## UNEQUAL LAND RIGHTS:

The law does not guarantee the same rights to own, use and control land to women and men, or women have no legal rights to own, use and control land.

59%

## LEGAL LAND RIGHTS ARE NOT FOLLOWED IN PRACTICE:

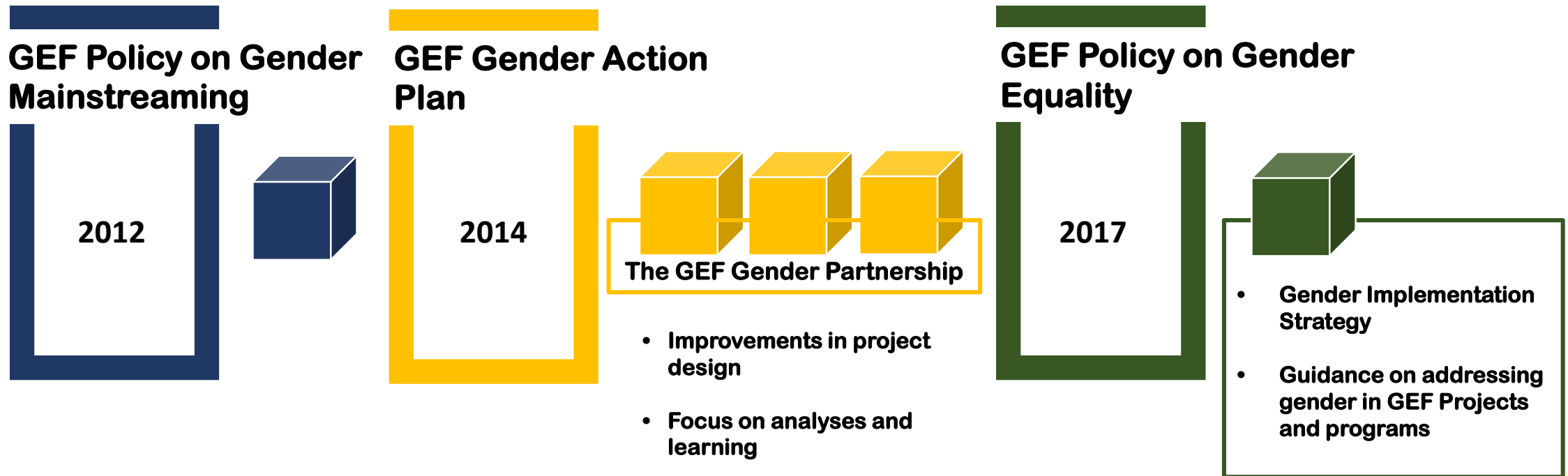
The law guarantees the same rights to own, use and control land to women and men, but there are some customary, traditional or religious practices that discriminate against women.



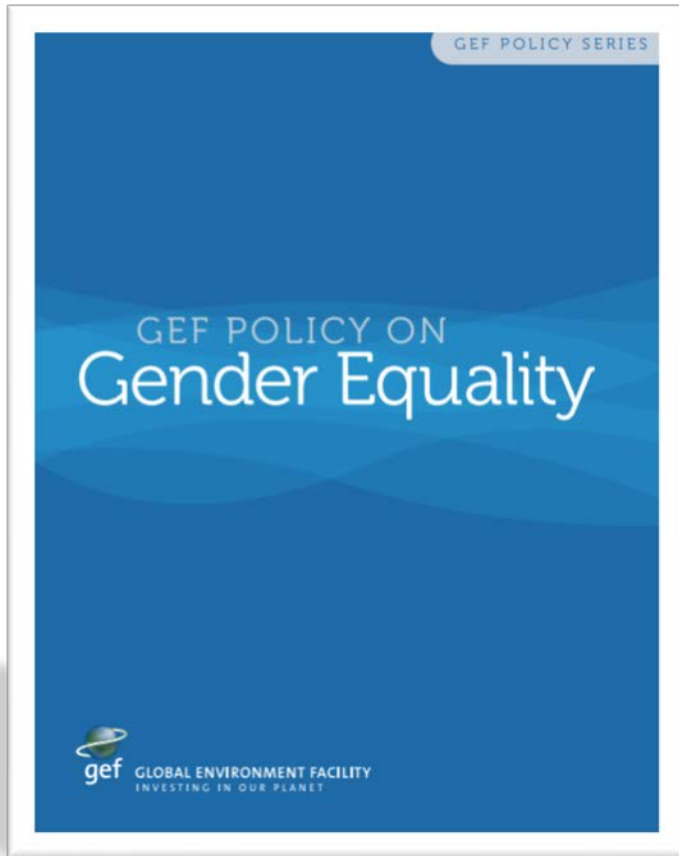
# GEF's Evolving Approach on Gender



Moving from a “do no harm” to a “do good” gender responsive approach



# GEF's Policy on Gender Equality



**Responds** to the increased attention to gender equality and women's empowerment by the multilateral environmental agreements (MEAs) that the GEF serves

**Recognizes** that efforts to combat environmental degradation and those to address gender inequality can be mutually supportive

**Aims** to catalyze projects that have the potential to materialize greater environmental impact through gender-responsive approaches and results

**Seeks** to ensure equal opportunities for women and men to participate in, contribute to and benefit from GEF-Financed Activities

**Outlines** clear GEF project and program cycle requirements





# GEF's Strategy on Gender Equality

Address gender gaps...

Access to and control of natural resources

Environmental decision-making and leadership

Access to socioeconomic benefits and services

through strategic entry points...

- Support women's improved access, use, and control of natural resources
- Enhance women's participation and role in natural resources decision-making processes, with women as agents of change
- Target women as specific beneficiaries, and invest in women's skills and capacity

to generate greater

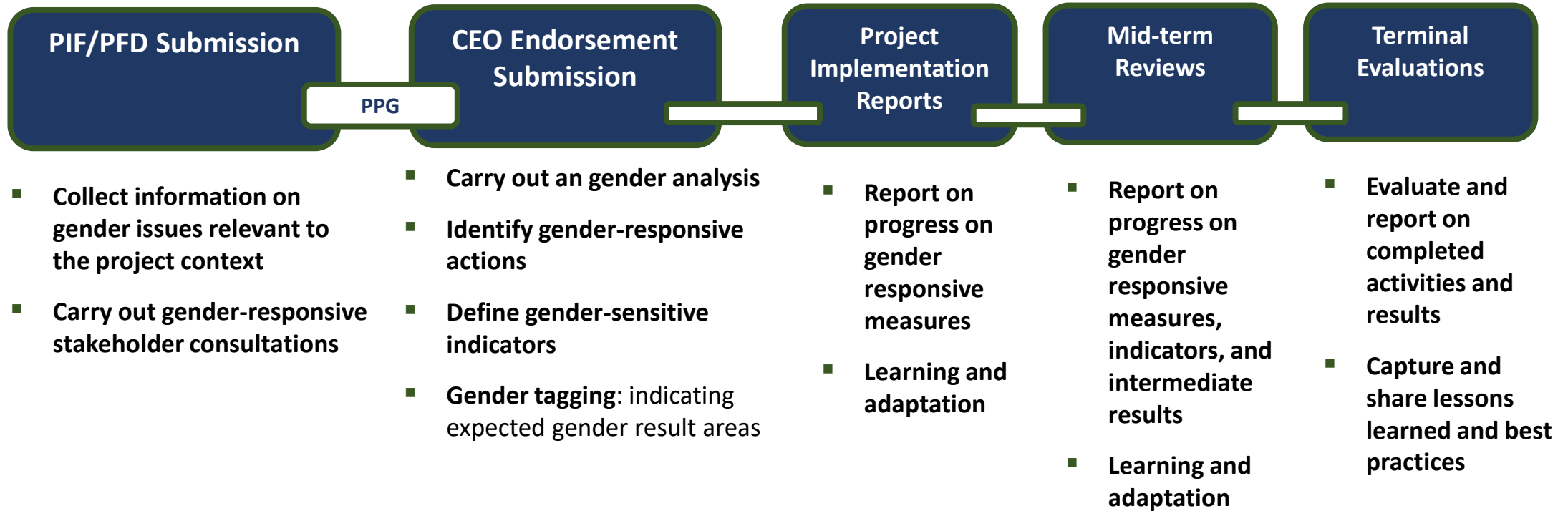
**Global Environment Benefits**



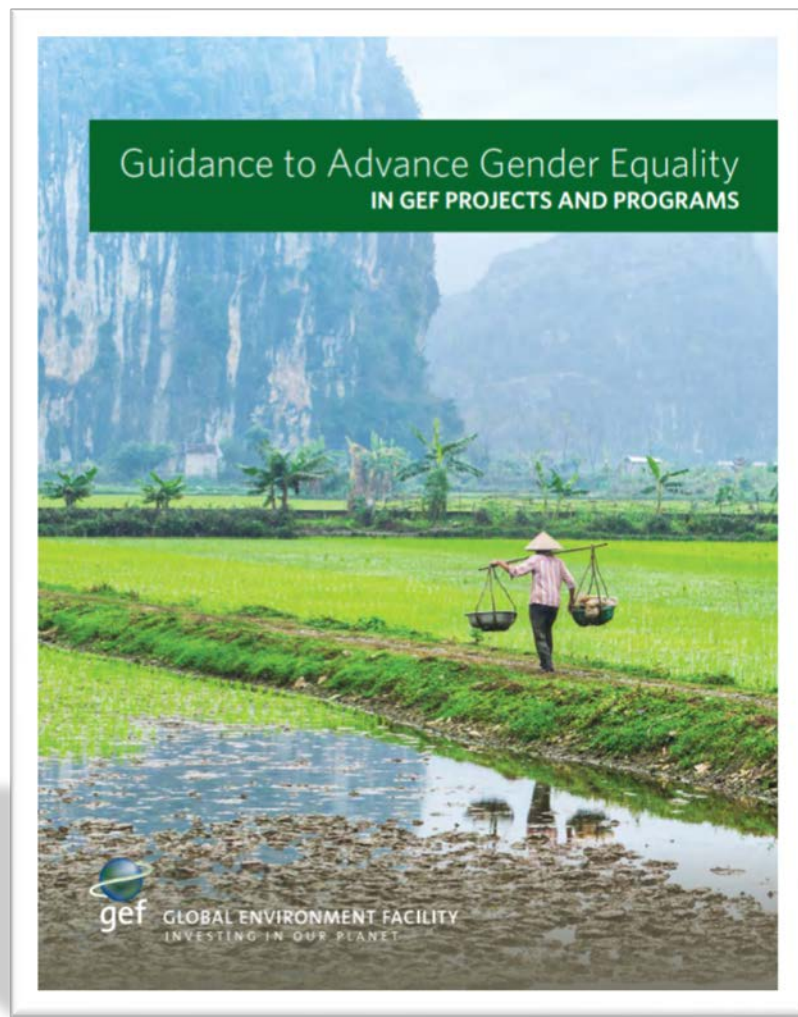
# Gender-responsive project identification and development

## Project Identification and Development

## Project Implementation and Monitoring



## Additional Resources



<https://www.thegef.org/sites/default/files/publications/GEF%20Guidance%20on%20Gender.pdf>



**SGP** The GEF  
Small Grants  
Programme



## Open online Course on Gender and Environment



Do you want to find out why promoting gender equality and women's empowerment can help deliver better environmental outcome, and to figure out how you can do it?

The course will give you facts and figures and the knowledge and tools to mainstream gender, and to be an effective change-maker for sustainable development.

It is a "one-stop-shop" for information on gender dimensions linked to biodiversity, climate change, land degradation, international waters, and chemicals and waste.



<https://www.uncclearn.org/course-gender-and-environment>



## Gender Equality

**for further information please contact:  
Gabriella Richardson Temm  
GEF Senior Specialist and Lead on Gender and  
Social Issues**

[grichardsontemm@thegef.org](mailto:grichardsontemm@thegef.org)

3.



## **Environmental and Social Safeguards**



The GEF was established to support

*“the protection of the global environment and promote thereby environmentally sound and sustainable economic development” [providing for] “consultation with, and participation [of] major groups and local communities”*

*(Instrument for the Establishment of the Restructured Global Environment Facility)*

In line with the Instrument, the Policy on Environmental and Social Safeguards aims to:

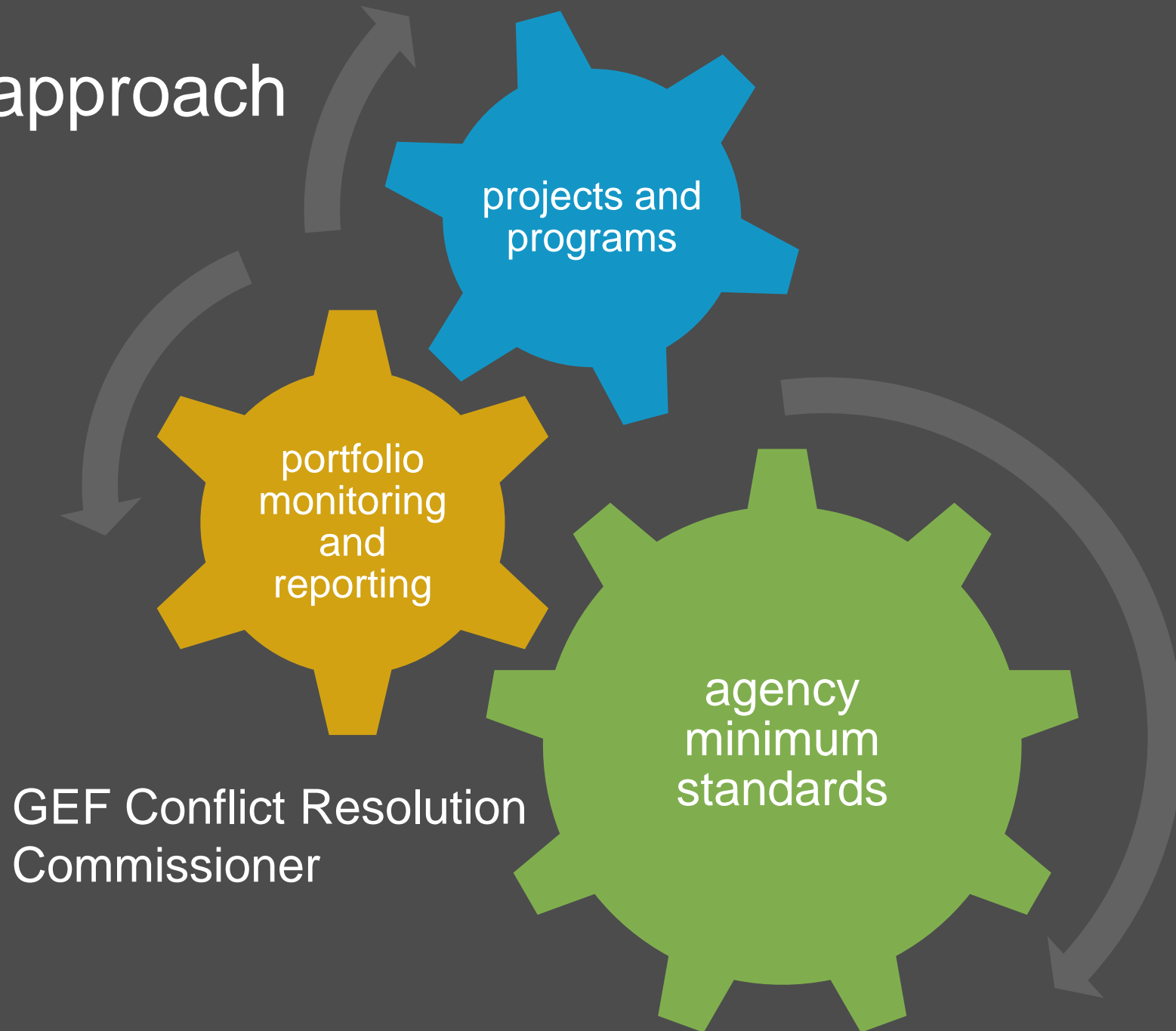
**ensure that GEF projects and programs systematically identify and address any environmental and social risks and potential impacts**



# evolution of the policy



# the GEF's approach at a glance



# minimum standards for GEF Agencies



## Minimum Standards

- 1: Environmental and Social Assessment, Management and Monitoring**
- 2: Accountability, Grievance and Conflict Resolution**
- 3: Biodiversity Conservation and the Sustainable Management of Living Natural Resources**
- 4: Restrictions on Land Use and Involuntary Resettlement**
- 5: Indigenous Peoples**
- 6: Cultural Heritage**
- 7: Resource Efficiency and Pollution Prevention**
- 8: Labor and Working Conditions**
- 9: Community Health, Safety and Security**

# E&S safeguards in the project cycle



# next steps



guidelines for  
documentation,  
monitoring and  
reporting;  
compliance  
assessment

capture of data  
and information  
through GEF  
Portal

assessment of  
Agency  
compliance

sharing  
knowledge



## **Environmental and Social Safeguards**

### **Policy on Environmental and Social Safeguards**

[http://www.thegef.org/sites/default/files/council-meeting-documents/EN\\_GEF.C.55.07.Rev\\_.01\\_ES\\_Safeguards.pdf](http://www.thegef.org/sites/default/files/council-meeting-documents/EN_GEF.C.55.07.Rev_.01_ES_Safeguards.pdf)

**for further information please contact:**

**Roland Sundstrom**

**Senior Policy Officer, GEF Secretariat**

[ksundstrom@thegef.org](mailto:ksundstrom@thegef.org)