



PROGRAM MANAGEMENT

March 14th, 2016 - March 18th, 2016

A weekly update on the GEF Program Management

Calendar

- Council Meeting Schedules
- GEFOP Meeting Schedules

Projects

- GEF Project Concepts, Proposals, Draft Documents Received
- Project Clearances, Approvals, Endorsements and Other Comments

Contacts

- GEF Secretariat Staff
- GEF Agencies
- GEF Trustee Convention Secretariats

Communications

- Introducing new staff to the GEFSEC
- Announcements

SCHEDULE OF FORTHCOMING GEF COUNCIL MEETINGS

Meetings/Consultations	Spring 2016	Fall 2016
GEF Council Consultations with Civil Society	June 6	October 24
GEF Council Meeting	June 7 -9	October 25-27
LDCF/SCCF Council Meeting	June 9	October 27
GEFCSO Forum		
STAP Panel Meetings	June 6	

GEF Work Program Calendar for 2016

Events	April IWP	June CWP
Receipt deadline for PIF	11-Jan	4-Mar
GEF GPU Technical clearance deadline	8-Feb	28-Mar
GEF PPO clearance deadline	15-Feb	4-Apr
CEO WP Approval	26-Feb	15-Apr
Draft Cover Note to Agencies, ConvSec, STAP	7-Mar	25-Apr
Inter-Agency Meeting with ConvSec, STAP	10-Mar	28-Apr
Posting of Work Program	14-Mar	2-May
Council Meeting		7-9 Jun
Council Approval	12-Apr	9-Jun

Fiscal Year '16

Country Support Program Activities

Expanded Constituency Workshops

TBD

GEF Introduction Seminar

World Bank J Building - J B1-080, Washington, DC

February 16-19

Expanded Constituency Workshop - Angola, Botswana, Lesotho, Malawi, Mozambique, Namibia, South Africa, Swaziland, Zambia, and Zimbabwe (10)

Gaborone, Botswana - Lansmore Masa Square Hotel

March 1-4

Expanded Constituency Workshop - Antigua and Barbuda, Bahama, Barbados, Belize, Cuba, Dominica, Dominican Republic, Grenada, Guyana, Haiti, Jamaica, St. Kitts And Nevis, St. Lucia, St. Vincent and Grenadines, Suriname, and Trinidad and Tobago (17)

Trinidad and Tobago - Venue TBD

March 15-18

Expanded Constituency Workshop - Albania, Bulgaria, Bosnia-Herzegovina, Georgia, Macedonia, Moldova, Montenegro, Poland, Romania, Serbia and Ukraine (12)

Becici, Montenegro - Hotel Splendid Conference Center

March 29 - April 1

Expanded Constituency Workshop - Cambodia, Lao PDR, Malaysia, Mongolia, Myanmar, Thailand, and Vietnam + Bangladesh, Bhutan, India, Maldives, Nepal, and Sri Lanka + China (15)

Thailand - Venue TBD

April 18-21

Expanded Constituency Workshop - Argentina, Bolivia, Chile, Paraguay, Peru, and Uruguay + Brazil, Colombia, and Ecuador (9)

Argentina - Venue TBD

April 26-29

Expanded Constituency Workshop - Costa Rica, El Salvador, Guatemala, Honduras, Mexico, Nicaragua, Panama, and Venezuela (8)

Guatemala - Venue TBD

May 10-13

Expanded Constituency Workshop - Benin, Cote d'Ivoire, Ghana, Guinea, Liberia, Nigeria, Sierra Leone, and Togo (8)

Freetown, Sierra Leone - Venue TBD

May 17-20

Expanded Constituency Workshop - Burkina Faso, Cape Verde, Chad, Guinea-Bissau, Mali, Mauritania, Niger, Senegal, and The Gambia (9)

Dakar, Senegal - Venue TBD

June 21-24

Expanded Constituency Workshop - Azerbaijan, Kazakhstan, Kyrgyz Republic, Switzerland, Tajikistan, Turkmenistan, and Uzbekistan + Armenia, Belarus, and Russian Federation (10)

Kazakhstan - Venue TBD

July 19-22

Expanded Constituency Workshop - Comoros, Djibouti, Eritrea, Ethiopia, Kenya, Madagascar, Mauritius, Rwanda, Seychelles, Somalia, Southern Sudan, Sudan, Tanzania, and Uganda (14)

September 8-11

Expanded Constituency Workshop - Burundi, Cameroon, Central African Republic, Congo,

Congo DR, Equatorial Guinea, Gabon 2015, and Sao Tome and Principe (8))

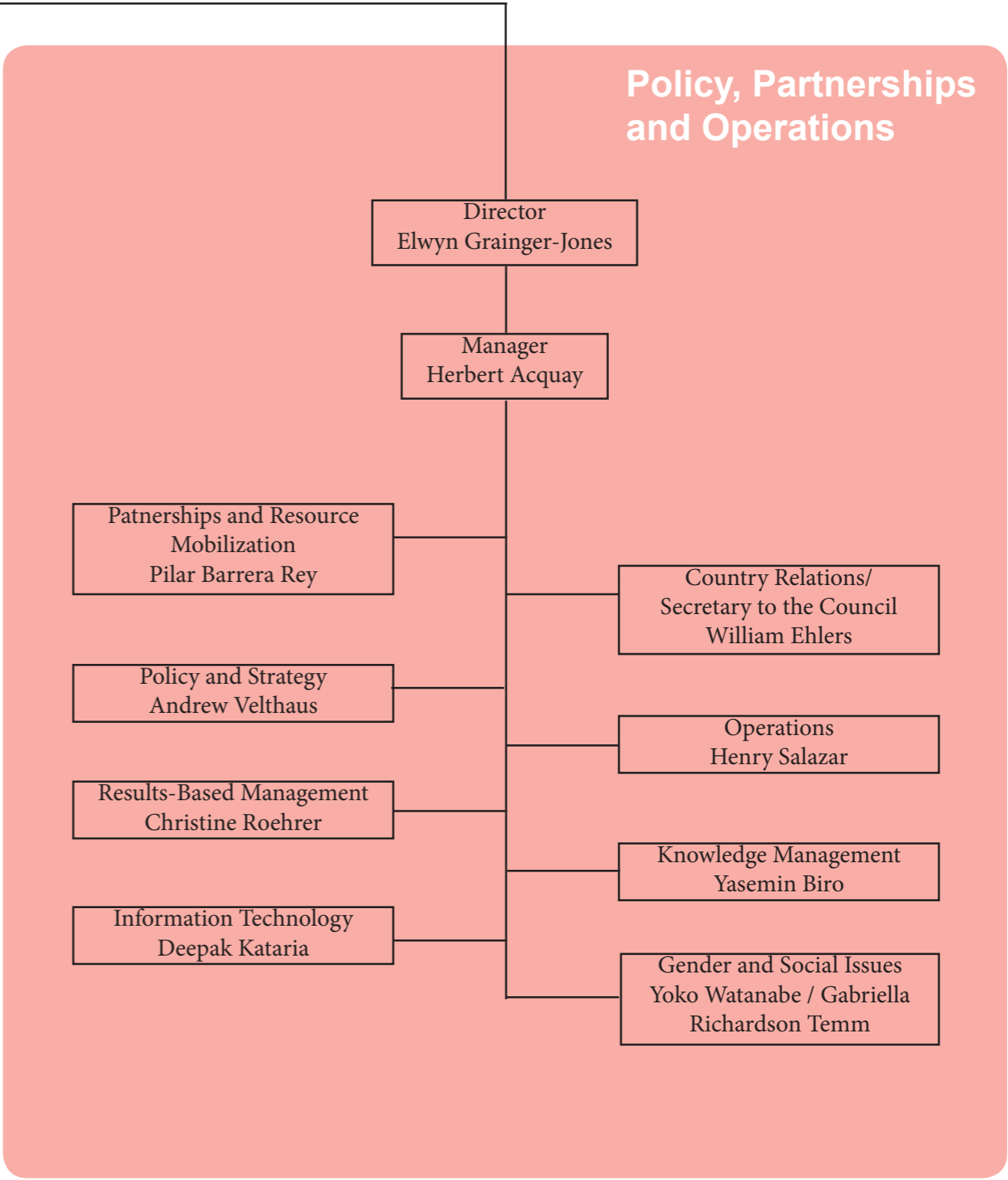
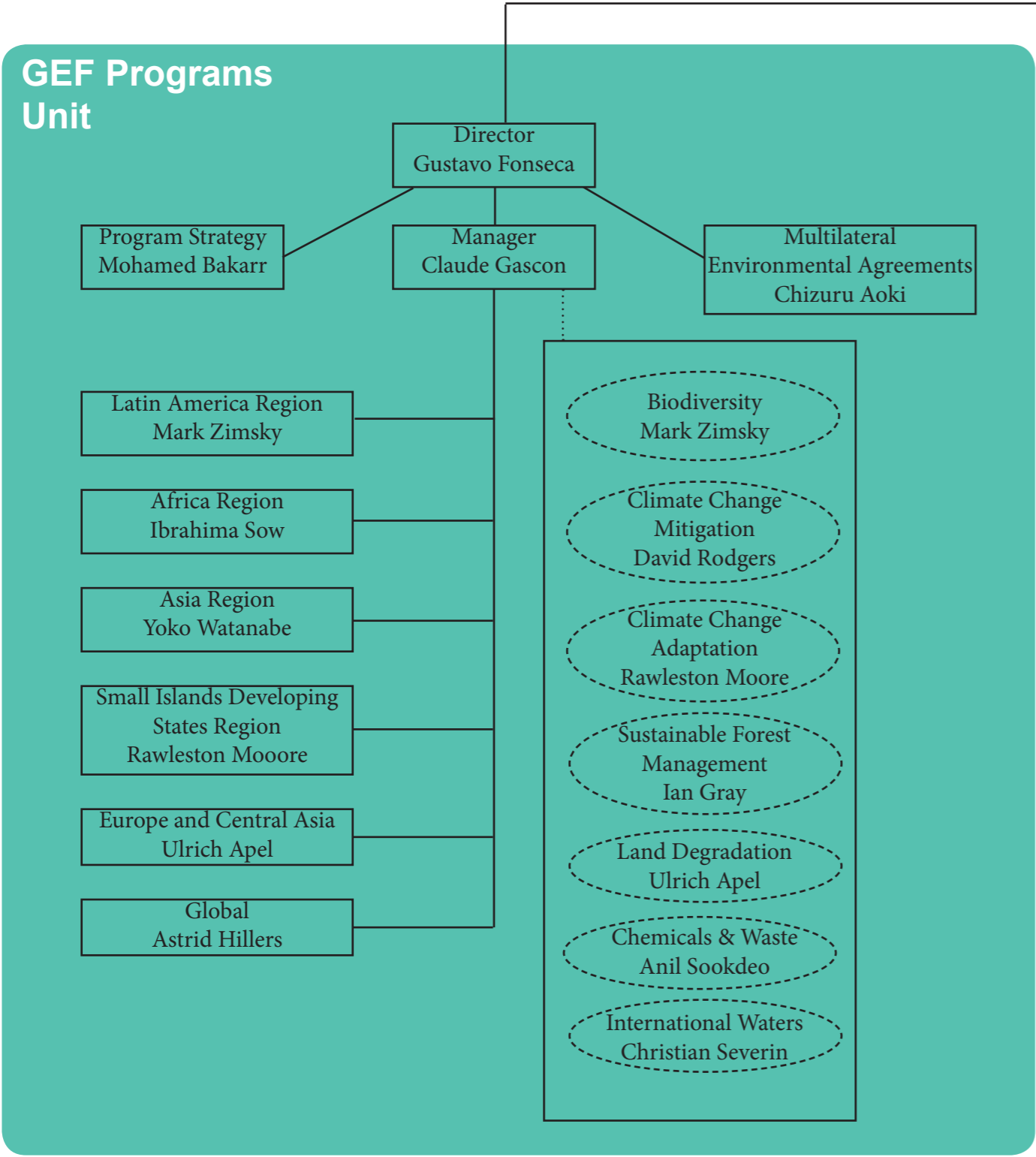
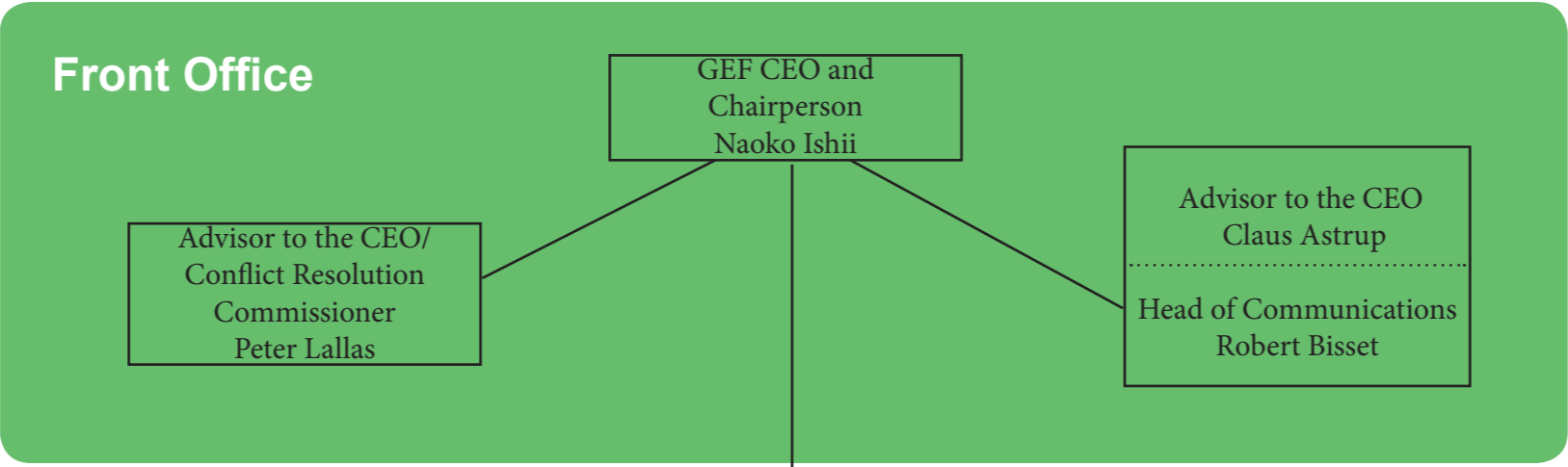
October 6-9

Expanded Constituency Workshop - Cook Islands, Fiji, Indonesia, Kiribati, Marshall Islands, Micronesia, Nauru, Niue, Palau, Papua New Guinea, Philippines, Samoa, Solomon Islands, Timor Leste, Tonga, Tuvalu, and Vanuatu (17)

Fiji - Venue TBD

November 1-4

Expanded Constituency Workshop - Afghanistan, Jordan, Iraq, Lebanon, Pakistan, Syria, and Yemen + Algeria, Egypt, Libya, Morocco, and Tunisia + Iran, Turkey (14)



Naoko Ishii
Chief Executive Officer and Chairperson
nishii@thegef.org

FRONT OFFICE

Peter Lallas

Advisor to the Chief Executive Officer
plallas@thegef.org
+1 202 473 9732

Claus Pram Astrup

Advisor to the Chief Executive Officer
castrup@worldbank.org
+ 1 202 478 7270

Amornrat Ning Poopetch

Resource Management Officer
apoopetch@thegef.org
+1 202 458 4366

Julienne Kouame

Program Analyst
jkouame@thegef.org
+1 202 473 8736

Esther Pormes

Senior Executive Assistant
epormes@thegef.org
+1 202 473 8736

Communications

Robert Bisset

Head of Communications
chofer@thegef.org
+1 202 458 5191

Christian Hofer

Senior Communications Officer
chofer@thegef.org
+1 202 458 0936

Patrizia Cocca

Communications Officer and KM
Coordinator pcocca@thegef.org
+1 202 458 0234

Camila Perez Gabilondo

ET Temporary - Communications
cperez@thegef.org
+1 202 458 0895

Mailing Address:

GEF Secretariat

1818 H Street, NW, MSN N8-800
Washington, D.C. 20433
+1 202 473 0508; Fax: +1 202 522 3240/3245

POLICY AND OPERATIONS

Elwyn Grainger-Jones

Director

egraingerjones@thegef.org

+ 1 202 473 8782

Akila Nazneen

Financial Assistant

anazneen@thegef.org

+1 202 473 1760

Amanda Adams

Program Assistant

aadams@thegef.org

+1 202 473 9878

Christina Bogyo

Senior Program Assistant

cbogyo@thegef.org

+1 202 473 6974

Christine Roehrer

Coordinator –Lead Results Based Management

croehrer@worldbank.org

+1 202 473-0337

Deepak Kataria

Coordinator - Information Technology

dkataria@thegef.org

+1 202 473 3881

Gabriella Richardson-Temm

Extended Tern Consultant - Gender and Social Issues

grichardsontemm@thegef.org

Henry Salazar

Coordinator - Operations

hsalazar@thegef.org

+1 202 473 8226

Herbert Acquay

Manager - Policy, Partnerships and Operations

hacquay@worldbank.org

+1 202 473 1043

Juman Byun

Business Solutions Officer

jbyun@thegef.org

+1 202 458 7987

Lesly Rigaud

Client Technologies Officer

lrigaud@thegef.org

+1 202 473 3881

Minna Maria Kononen

Country Relations Officer

mkononen@thegef.org

+1 202 473 9402

Naiying Peng

Operations Analyst

npeng@thegef.org

+1 202 458 9580

Nicolas Alejandro Marquez Pizzanelli

at ns Analyst

Country Relations

nmarquez@thegef.org

+1 202 473 9522

Olivier Besson

Program Assistant

obesson@thegef.org

+1 202 473-8935

Omid Parhizkar

Operations Officer

oparhizkar@thegef.org

+1 202 458 5506

Oreste Maia Andrade

Operations Analyst

oparhizkar@thegef.org

+1 202 458 9387

Pilar Barrera
Coordinator - Partnerships and Resource
Mobilization
pbarrera@thegef.org
+1 202 458 9891

Raul Rodriguez
Temporary
rrodriguez@thegef.org

Regine Mpoyi
Program Assistant
rmpoyi@thegef.org
+1 202 473 2754

Seo-Jeong Yoon
Policy Officer
syoon@thegef.org
+1 202 473 7832

Susan Waithaka
Country Relations Officer
swaithaka@thegef.org
+1 202 473 5457

William Ehlers
Coordinator – Country Relations/
Secretartary to the Concil
wehlers@thegef.org
+1 202 458 9436

Yoko Watanabe
Coordinator – Gender and Social Issues
[ywatane@thegef.org](mailto:ywatanabe@thegef.org)
+1 202 473 9847

Quynh Xuan Thi Phan
Financial Officer
qphan1@worlbank.org
+1 202 458 4760

Ramon Prudencio C de Mesa
Operations Officer
rmesa@thegef.org
+1 202 458 9285

Robert Schreiber
Program Coordinator
rschreiber@thegef.org
+1 202 458 0288

Sonja Sabita Teelucksingh
Environmental Specialist
steelucksingh@thegef.org
+1 202 458 4004

Thomas Biegel
Consultant
tbiegel@thegef.org
+1 202 473 9252

Yasemin Biro
Coordinator - Knowledge Management
ybiro@thegef.org
+1 202 473 1550

PROGRAMS

Gustavo Fonseca

Director

gfonseca@thegef.org

+ 1 202 458 4818

Anil Bruce Sookdeo

Chemicals and Waste Focal Area Coordinator

asookdeo@thegef.org

+1 202 458 0683

Camila Florez Bossio

Extended Term Consultant

cflorezbossio@thegef.org

+1 202 473-4346

Christian Severin

International Waters Focal Area Coordinator

cseverin@thegef.org

+1 202 458 2001

Cyrille Barnerias

Senior Environment Specialist

cbarnerias@thegef.org

+1 202 473 8871

Dustin Schinn

Operations Analyst

dschinn@thegef.org

+1 202 458 1234

Fareeha Iqbal

Climate Change Specialist

fiqball@thegef.org

+1 202 458 9593

Glynis Barber

Program Assistant

gbarber@thegef.org

+1 202 473 9647

Jaime Cavelier

Senior Biodiversity Specialist

jcavelier@thegef.org

+1 202 473 4886

kat r n e r r i e

Senior Program Assistant

kcherrie@thegef.org

+1 202 458 1460

Astrid Hillers

Senior Environmental Specialist

ahillers@thegef.org

+1 202 458 8173

Chizuru Aoki

Lead Environmental Specialist - Multilateral
Environmental Agreements

caoki@thegef.org

+1 202 473 6068

Claude Gascon

Lead Program Manager

cgascon@thegef.org

+1 202 458 9755

David Rodgers

Climate Change Mitigation Focal Area Coordinator

drodgers@thegef.org

+1 202 458 9869

Evelyn Swain

Environmental Specialist

eswain@thegef.org

+1 202 473 1151

Flavius Mihaies

Consultant, Climate and Chemicals

fmihaies@thegef.org

+1 202 560 4934

r a i a

A a n a l n a t

isow@thegef.org

+1 202 473 2716

Jean-Marc Sinnassamy

Senior Environmental Specialist

jsinnassamy@thegef.org

+1 202 478 8060

Kettly Denis

Program Assistant

kdenis@thegef.org

+1 202 473 0825

Knut Roland Sundstrom
Climate Change Specialist
ksundstrom@thegef.org
+1 202 473 7510

Lulwa Ali
Senior Environmental Specialist
lali1@thegef.org
+1 202 473 5618

Masako Ogawa
Senior Environment Specialist
mogawa2@thegef.org
+1 202 458 2789

Ming Yang
Senior Climate Change Specialist
myang@thegef.org
+1 202 473 5707

Monica Fernandes
Senior Program Assistant
mfernandes@thegef.org
+1 202 473 9647

Nicole Glineur
Senior Environmental Specialist
nglineur@thegef.org
+1 202 473 2512

Rawleston Moore
SIDS Regional Coordinator/
Climate Change Adaptation Focal Area
Coordinator
rmoore1@thegef.org
+ 1 202 473 8231

Sarah Wyatt
Operations Analyst
swyatt@thegef.org
+1 202 473 0534

Steffen Hansen
Junior Professional Officer
shansen@thegef.org
+1 202 458 8796

Leah Karrer
Senior Environmental Specialist
lkarrer@thegef.org
+1 202 473 8364

Mark Zimsky
Latin America Regional Coordinator/
Biodiversity Focal Area Coordinator
mzimsky@thegef.org
+1 202 473 7855

Mi en a n a e a s e
Junior Professional Associate
mgonzalezvasquez@thegef.org
+1 202 458 1284

Mohamed Imam Bakarr
Lead Environmental Specialist - Program Strategy
mbakarr@thegef.org
+1 202 458 8890

Nhu Quynh Phan
Program Assistant
nphan@thegef.org
+1 202 473 4236

Pascal Martinez
Senior Climate Change Specialist
pmartinez2@thegef.org
+1 202 458-9755

Saliha Dobardzic
Senior Climate Change Specialist
sdobardzic@thegef.org
+1 202 473 5943

Shakil Kayani
Program Assistant
skayani@thegef.org
+1 202 458 4680

Tigest Tirfe
Program Assistant
ttirfe@thegef.org
+1 202 458 9297

Ulrich Apel

Europe and Central Asia Regional Coordinator/
Land Degradation Focal Area Coordinator
uapel@thegef.org
+1 202 473 2573

Xiaomei Tan

Climate Change Specialist
xtan1@thegef.org
+1 202 473 7448

Yoko Watanabe

Asia Regional Coordinator
[ywatane@thegef.org](mailto:ywatanabe@thegef.org)
+1 202 473 9847

GEF DIRECTORY OF ADDRESSEES

GEF Secretariat

GEF Secretariat¹
Program Coordination Registry
1818 H Street, NW
Washington, D.C. 20433, USA
gcoordination@thegef.org

Attn: Mr. Henry Salazar
Coordinator - Operations
hsalazar@thegef.org
+1 202 473 8226

GEF Trustee

International Bank for Reconstruction and Development (The World Bank) Registry
1818 H Street, NW
Washington, D.C. 20433, USA
geftrustee@worldbank.org

Mr. Praveen Desabatla
Team Leader, DFPTF
pdesabatla@worldbank.org
+1 202 458 2099

Convention Secretariats

UN Convention on Biological Diversity (CBD)
413 rue Saint-Jacques, Suite 800
Montreal, Quebec, Canada H2Y 1 N9
Secretariat@cbd.int

Attn: Mr. Braulio F. de Souza Dias
Executive Secretary
GEF Contact Person: Mr. Yibin Xiang
Program Officer
Yibin.xiang@cbd.int
+1 514 288 2220

UN Framework on Climate Change Convention (UNFCCC)
Haus Carstanjen
Martin Luther King Strasse 8
53175 Bonn, Germany
secretariat@unfccc.int

Attn: Ms. Christiana Figueres
Executive Secretary
GEF Contact Person: Mr. Yolando Velasco Manager, FTC Programme
gefenabling.activities@unfccc.int
gefprojects@unfccc.int
+45228 815 1999

Secretariat of the Basel, Rotterdam and Stockholm Conventions
UNEP International Environment House 1
11-13 Chemin des Anemones
1219 Chatelaine, Geneva, Switzerland

Attn: Dr. Rolph Payet
Executive Secretary
Mr. Frank Moser
GEF Focal Point
Office of the Executive Secretary
frank.moser@brsmeas.org
+41 22 917 8951

¹ GEF Secretariat's physical address: 1899 Pennsylvania Avenue, NW, Washington, D.C. 20006

**UN Convention to Combat Desertification
(UNCCD)**

Herrmann-Ehlers Str. 10
D-53113 Bonn, Germany
secretariat@unccd.int

Attn: Ms. Monique Barbut
Executive Secretary

*GEF Contact Person: Ms. Anja Thust
Program Officer, FCMI Unit
athust@unccd.int
+49 228 815 2828*

Interim Secretariat of the Minamata Convention

International Environment House 1
13, chemin des Anémones
CH-1219 Chatelaine, Geneva
Switzerland

Mr. Jacob Duer
Coordinator, Minamata Convention
jacob.duer@unep.org
+41 22 917 82 17

STAP Panel and Secretariat

Panel

Rosina Bierbaum

Chairperson

rbierbau@umich.edu

+1 734 763 8675

Ralph E. Sims

Panel Member on Climate Change Mitigation

R.E.Sims@massey.ac.nz

+64 21 166 4555

Brian Child

Panel Member on Biodiversity

bchild@ufl.edu

+352 392 0494

Ricardo Barra

Panel Member on Chemicals & Waste

ricbarra@udec.cl

56-41-2204002

Annette Cowie

Panel Member on Land Degradation

annette.cowie@une.edu.au

+61 2 677 28080

Jakob Granit

Panel Member on International Waters

jakob.granit@sei-international.org

+46 73 707 8536

Anand Patwardhan

Panel Member on Adaptation

apat@umd.edu

+1 301 405 3413

Michael Stocking

Advisor to the STAP Chair

m.stocking@uea.ac.uk

+44 1603 592 339

Thomas E. Lovejoy

Advisor to the STAP Chair

tlovejoy@unfoundation.org

Secretariat

Thomas Hammond

STAP Secretary

thomas.hammond@unep.org

+1 202 974 1318

Guadalupe Duron

Programme Officer

guadalupe.duron@unep.org

+1 202 974 1313

Robin Burgess

Programme Assistant

robin.burgess@unep.org

+1 202 974 1311

Christine Wellington-Moore

Senior Programme Officer

christine.wellington-moore@unep.org

+1 202 974 1303

Lev Neretin

Senior Programme Officer

lev.neretin@unep.org

+1 202 621 5020

Virginia Gorsevski

Consultant

virginia.gorsevski@unep.org

+1 202 621 5039

GEF Agency Secretariats

African Development Bank (AfDB) Registry

Headquarters
01 BP 1387 Abidjan 01
Côte d'Ivoire
Gef_afdb@afdb.org

Mr. Mahamat Assouyouiti
GEF Coordinator
m.assouyouiti@afdb.org

Copy to:
Mr. Kurt Lonsway
Division Manager, Environment and Climate
Change
k.lonsway@afdb.org

Asian Development Bank (ADB) Registry

6 ADB Avenue
Mandaluyong City 1550
Metro Manila, Philippines
adbgef@adb.org

Attn: Mr. Nessim Ahmad
Director, Environment and Social Safeguards
and GEF Official Focal Point
njahmad@adb.org

Copy to:
Mr. Bruce Dunn
ADB/GEF Coordinator
bdunn@adb.org
+632 683 1922/ +632 683 1923

European Bank for Reconstruction and Development (EBRD) Registry

One Exchange Square
London EC2A 2JN, United Kingdom
ebrdgef@ebrd.com

Attn: Ms. Marta Simonetti
Senior Manager
(Multilateral Funds – Climate and Environment)
EBRD GEF Executive Coordinator
Donor Co-Financing – VP Policy
simonetm@ebrd.com
+ 0044 (0) 207338 7259
+ 0044 (0) 7921 039815

United Nations Food and Agriculture Organization (FAO) Registry

Viale Dell Terme di Caracalla
00153 Rome, Italy
GEF-Coordination-Unit@fao.org

Attn: Mr. Gustavo Merino
Director, Investment Centre Division
TCI-Director@fao.org
faogef@fao.org
+3906 570 54477

Copy to:
Mr. Jeffrey Griffin
Senior Coordinator - GEF
Investment Center Division
Jeffrey.Griffin@fao.org
+3906 570 55680

GEF Agency Secretariats cont'd

Inter-American Development Bank (IDB) Registry

1300 New York Avenue, NW
Washington, D.C. 20577, USA
ldb-gef@iadb.org

Mr. Michael Collins
GEF Coordinator
michaelc@iadb.org
+ 1 202 623 2158

International Bank for Reconstruction and Development (The World Bank) Registry

1818 H Street, NW Washington,
D.C. 20433, USA
wbgfoperations@worldbank.org

Ms. Karin Shepardson
GEF Executive Coordinator
kshepardson@worldbank.org
+ 1 202 458 1398

International Fund for Agricultural Development (IFAD) Registry

Via Paolo di Dono, 44
00142 Rome, Italy
ECDmailbox@ifad.org

Mr. Perin Saint-Ange
Associate Vice President,
Programme Management Department
p.saintange@ifad.org
+39 06 5459 2448

Copy to:

Ms. Margarita Astrálaga
Director, Environment and Climate Division
m.astralaga@ifad.org
Tel: +39 06 5459 2151

Ms. Sheila Mwanundu
GEF Coordinator
s.mwanundu@ifad.org
Tel: +39 06 5459 2031

Ms. Aisha Nazario
a.nazario@ifad.org
Tel: +39 06 5459 2459

United Nations Environment Programme (UNEP) Registry

United Nations Avenue
Gigiri, PO Box 30552
00100 Nairobi, Kenya
Unepgef@unep.org

Local Office:

900 17th Street, NW
Suite 506, Washington, D.C. 20006

Ms. Brennan VanDyke
GEF Executive Coordinator
Deputy Director, Office for Operations
vandyke@un.org
Tel: (917) 367-2114

Copy to:

Ms. Kelly West
Senior GEF Portfolio Manager
Office for Operations
Kelly.West@unep.org

GEF Agency Secretariats cont'd

United Nations Industrial Development Organization (UNIDO) Registry
Vienna International Centre
PO Box 300
A-1400 Vienna, Austria
gef@unido.org

Mr. Juergen Hierold
GEF Coordinator
J.Hierold@unido.org
+43 1 26026 4565

United Nations Development Programme (UNDP) Registry
304 East 45th Street
New York, NY 10017, USA
undpgef@undp.org

Attn: Ms. Adriana Dinu
GEF Executive Coordinator
Adriana.dinu@undp.org
+1 212 906 5143

GEF Project Agency Secretariats

Corporación Andina de Fomento (CAF)
380 Enrique Canaval Moreyra Ave., 13th Floor,
San Isidro, Lima
Lima 27, Peru
CAFGEF@caf.com

Attn: René Gómez García Palao
Senior Executive
rgomezgarcia@caf.com
+511-710-8530

Copy to:
Ms. Ligia Castro de Doens,
Director
Environment
lcastro@caf.org

Conservation International (CI)
2011 Crystal Drive, Suite 500
Arlington VA, 22202
USA
CIGEF@conservation.org

Attn: Mr. Miguel Morales
Vice President/ Managing Director
CI-GEF Project Agency
mamorales@conservation.org

Copy to:
osamaroo@conservation.org

GEF Project Agency Secretariats cont'd

**Development Bank of Southern Africa
(DBSA)**

1258 Lever Road, Headway Hill
Midrand, 1685
South Africa
DBSAGEF@dbsa.org

Attn: Ms. Nomsa T. Zondi
GEF Coordinator
nomsaz@dbsa.org
+27 11 313 3491

**Foreign Economic Cooperation Office
(FECO)**

Ministry of Environmental Protection
ECO Building
No.5 Houyingfang Hutong
Xicheng District, Beijing 100035, China
FECOGEF@mepfeco.org.cn

Attn: Mr. Xiao Xuezhi
Deputy Director General
xiao.xuezhi@mepfeco.org.cn
+ 86-10-82268807

Copy to:
Ms. Chen Haijun
Director,
chen.haijun@mepfeco.org.cn
+ 86-10-82268846

Ms. Yan Wei
Senior Project Manager
yan.wei@mepfeco.org.cn
+ 86-10-82268848

**International Union for Conservation of
Nature (IUCN)**

Rue Mauverney, 28
CH-1196 Gland,
Switzerland
IUCNGEF@iucn.org

Attn: Cyrie Sendashonga
Global Director, Policy and Programme
Cyriaque.Sendashonga@iucn.org
+41 22 999 03 17

Copy to:
Mr. Jean-Yves Pirot,
Head, GEF Coordination Unit
jean-yves.pirot@iucn.org
+41 22 999 02 56

Mr. Sébastien Delahaye
Portfolio Manager
GEF Coordination Unit
Sebastien.Delahaye@iucn.org
+41 22 999 02 51

GEF Project Agency Secretariats cont'd

World Wildlife Fund, Inc. (WWF-US)

1250 24th St, NW
Washington, DC 20037-1193
WWFGEF@wwfus.org

Attn: Dr. David S. McCauley
Senior Vice President
Policy and Government Affairs
david.mccauley@wwfus.org
+1-202-495-4159

Copy to:
Mr. Hervé Lefevre
Senior Director, GEF Relations and
GEF Coordinator
Herve.Lefevre@wwfus.org
+1-202-459-8533

**Fundo Brasileiro para a Biodiversidade
(FUNBIO)**

Rua Voluntários da Pátria, 286 5º andar
Botafogo, Rio de Janeiro, RJ
22270-014
funbiogef@funbio.org.br

Attn: Fabio Heuseler Ferreira leite
GEF Coordinator
fabio.leite@funbio.org.br
+ 55 21 2123-5326

Copy to:
agenciageg@funbio.org.br

**DISTRIBUTION LIST WHEN SUBMITTING PROJECT PROPOSALS
FOR GEF CEO APPROVAL/ENDORSEMENT**

As a rule, all GEF Agencies are expected to circulate their project proposals to the GEF Secretariat, GEF Agencies, and STAP and to the relevant Convention Secretariat.

Standard Distribution List for all projects (PIF, PPG, FSP, MSP, and EA):

gcoordination@thegef.org
STAP.Secretariat@unep.org
thomas.hammond@unep.org
adbgef@adb.org
bdunn@adb.org
njahmad@adb.org
gef_afdb@afdb.org
m.assouyouti@afdb.org
k.lonsway@afdb.org
ambengue@boad.org
dtoe@boad.org
itraore@boad.org
straore@boad.org
ytoure@boad.org
CIGEF@conservation.org
lspijkerman@conservation.org
osamaroo@conservation.org
DBSAGEF@dbsa.org
nomsaz@dbsa.org
ebrdgef@ebrd.com
simonetm@ebrd.com
GEF-Coordination-Unit@fao.org
faogef@fao.org
TCI-Director@fao.org
Jeffrey.Griffin@fao.org
FECOGEF@mepfeco.org.cn
xiao.xuezh@mepfeco.org.cn
chen.haijun@mepfeco.org.cn
yan.wei@mepfeco.org.cn
FUNBIOGEF@funbio.org.br
agenciagef@funbio.org.br
fabio.leite@funbio.org.br
idb-gef@iadb.org
michaelc@iadb.org
ECDmailbox@ifad.org
p.saintange@ifad.org
m.astralaga@ifad.org
s.mwanundu@ifad.org
a.nazario@ifad.org
IUCNGEF@iucn.org
Cyriaque.Sendashonga@iucn.org
Sebastien.Delahaye@iucn.org
jean-yves.piro@iucn.org
unepgef@unep.org
vandyke@un.org
Kelly.West@unep.org
gef@unido.org
j.hierold@unido.org
undpgef@undp.org
adriana.dinu@undp.org
wbgefoperations@worldbank.org
WWFGEF@wwfus.org
David.McCauley@wwfus.org
Herve.Lefeuvre@wwfus.org

To be included in the Standard Distribution List as appropriate:

For Biodiversity Projects:

secretariat@cbd.int
yibin.xiang@cbd.int

For Climate Change Projects:

gefprojects@unfccc.int
gefenabling.activities@unfccc.int

For Land Degradation Projects:

secretariat@unccd.int
athust@unccd.int

For Mercury Projects

jacob.duer@unep.org
shelia.logan@unep.org

For POPs Projects:

ta@brsmeas.org
maria.cardenas@brsmeas.org
frank.moser@brsmeas.org