



# PROGRAM MANAGEMENT

October 3<sup>rd</sup>, 2016 - October 7<sup>th</sup>, 2016

A weekly update on the GEF Program Management

## Calendar

- Council Meeting Schedules
- GEFOP Meeting Schedules

## Projects

- GEF Project Concepts, Proposals, Draft Documents Received
- Project Clearances, Approvals, Endorsements and Other Comments

## Contacts

- GEF Secretariat Staff
- GEF Agencies
- GEF Trustee Convention Secretariats

## Communications

- Introducing new staff to the GEFSEC
- Announcements

## SCHEDULE OF FORTHCOMING GEF COUNCIL MEETINGS

Meetings/Consultations	Fall 2016
GEF Council Consultations with Civil Society	October 24
GEF Council Meeting	October 25-27
LDCF/SCCF Council Meeting	October 27
STAP Panel Meetings	

### GEF Work Program Calendar for 2016

Events	Oct. CWP
Receipt deadline for PIF	25-Jul
GEF clearance deadline	29-Aug
Draft Cover Note to Agencies, ConvSec, STAP	19-Sept
Inter-Agency Meeting with ConvSec, STAP	22-Sept
Posting of Work Program	27-Sept
Council Meeting	25-27 Oct
Council Approval	27-Oct

**Fiscal Year '16**  
**Country Support Program Activities**  
**Expanded Constituency Workshops**

**Constituency Meetings**

**October 13**

East Africa – *Port Louis, Mauritius*

**October 13-14**

Southern Cone – *Montevideo, Uruguay*

**October 17-18**

Southern Africa – *Luanda, Angola*

**October 19**

South Asia – *Dhaka, Bangladesh*

**Introduction Seminar**

**November 30 - December 2**

***Washington, DC***

## Requests Received from GEF Agencies

October 3 - 7, 2016

GEF ID	IA ID	Type	Focal Area	Decision Sought	Proponent	Country	Project Title	Program Manager	Date Received
<b><u>IADB</u></b>									
4849		FP	Biodiversity	CEO endorsement of FSP	IADB	Colombia	Sustainable Management and Conservation of Biodiversity in the Magdalena River Basin	Mark Zimsky	3-Oct-16
<b><u>IFAD</u></b>									
9239		FP	Multi Focal Area	CEO PIF Clearance for WPI	IFAD	Indonesia	Integrated Management of Peatland Landscapes in Indonesia (IMPLI)	Yoko Watanabe	4-Oct-16
9134		FP	Multi Focal Area	CEO endorsement of FSP	IFAD, UNIDO	Senegal	Food-IAP: Agricultural Value Chains Support Project	Jean-Marc Sinnassamy	6-Oct-16

<b>GEF ID</b>	<b>IA ID</b>	<b>Type</b>	<b>Focal Area</b>	<b>Decision Sought</b>	<b>Proponent</b>	<b>Country</b>	<b>Project Title</b>	<b>Program Manager</b>	<b>Date Received</b>
<b>UNDP</b>									
6958	5411	FP	Multi Focal Area	CEO endorsement of FSP	UNDP	Kyrgyz Republic	Conservation of Globally Important Biodiversity and Association Land and Forest Resources of Western Tian Shan Forest Mountain Ecosystems and Support to Sustainable Livelihoods	Ulrich Apel	5-Oct-16
9647	5443	FP	Climate Change	CEO PIF Clearance for WPI	UNDP	Guinea-Bissau	Strengthening Climate Information and Early Warning Systems for Climate Resilient Development and Adaptation to Climate Change in Guinea Bissau	Dustin Schinn	5-Oct-16
9081	5285	FP	Climate Change	CEO endorsement of FSP	UNDP	Turkey	Promoting Energy-Efficient Motors in Small and Medium Sized Enterprises (SMEs)	Ogawa Masako	5-Oct-16
9180	5664	FP	Multi Focal Area	CEO endorsement of FSP	UNDP	Global	Comm-IAP: Support to Reduced Deforestation Commodity Production	Ulrich Apel	7-Oct-16
9180	5664	FP	Multi Focal Area	CEO endorsement of FSP	UNDP	Global	Comm-IAP: Support to Reduced Deforestation Commodity Production	Ulrich Apel	7-Oct-16

<b>GEF ID</b>	<b>IA ID</b>	<b>Type</b>	<b>Focal Area</b>	<b>Decision Sought</b>	<b>Proponent</b>	<b>Country</b>	<b>Project Title</b>	<b>Program Manager</b>	<b>Date Received</b>
<b>UNEP</b>									
5788		MSP	Land Degradation	CEO MSP Approval	UNEP	Cote d'Ivoire	Assessment of Land Degradation Dynamic in Coffee -Cocoa production and Northern Ivory Coast to promote SLM practices and Carbon Stock Conservation ALDD SLM CSC	Jean-Marc Sinnassamy	4-Oct-16
5806		MSP	Biodiversity	CEO MSP Approval	UNEP	Congo	Creation of Loungo Bay Marine Protected Area to Support Turtles Conservation in Congo	Jaime Cavelier	5-Oct-16
4739		FP	Biodiversity	CEO endorsement of FSP	UNEP	Cameroon	Participative Integrated Ecosystem Services Management Plans for Bakassi Post Conflict Ecosystems PINESMAP BPCE	Jaime Cavelier	5-Oct-16
5538		FP	International Waters	CEO endorsement of FSP	UNEP	Regional (China, Indonesia, Cambodia, Philippines, Vietnam)	Implementing the Strategic Action Programme for the South China Sea	Leah Karrer	7-Oct-16

<b>GEF ID</b>	<b>IA ID</b>	<b>Type</b>	<b>Focal Area</b>	<b>Decision Sought</b>	<b>Proponent</b>	<b>Country</b>	<b>Project Title</b>	<b>Program Manager</b>	<b>Date Received</b>
<b><u>UNIDO</u></b>									
9640		MSP	Climate Change	CEO PIF Approval	UNIDO	Cambodia	Low-carbon development for productivity and climate change mitigation through the Transfer of Environmentally Sound Technology (TEST) methodology	Ogawa Masako	5-Oct-16
9134		FP	Multi Focal Area	CEO endorsement of FSP	IFAD, UNIDO	Senegal	Food-IAP: Agricultural Value Chains Support Project	Jean-Marc Sinnassamy	6-Oct-16
9495		FP	Climate Change	CEO PIF Clearance for WPI	UNIDO	Gambia	Operationalization of the SE4All Action Agenda: Promoting Inclusive, Environmentally-sound and Low-carbon Development	Ogawa Masako	6-Oct-16
9648		MSP	Climate Change	CEO PIF Approval	UNIDO	Barbados	Strategic platform to promote sustainable energy technology innovation, industrial development and entrepreneurship in Barbados	Rawleston Moore	7-Oct-16
<b><u>World Bank</u></b>									
9596	160613	FP	Climate Change	CEO PIF Clearance for WPI	World Bank	Burundi	Landscape Restoration project	Katya Kuang-Idba	19-Sep-16

# Responses to Proponents

October 3 - 7, 2016

ID	IA ID	Type	Focal Area	Decision Sought	Proponen	Country	Project Title	Program Manage	Response Date	Remarks
<b><u>AfDB</u></b>										
5231		FP	Climate Change	CEO endorsement of FSP	AfDB	Angola	Integrating Climate Change into Environment and Sustainable Land Management Practices (ICE-SLM)	Saliha Dobardzic	7-Sep-16	FSP endorsed by CEO
9420		FP	International Waters	CEO PIF Clearance for WPI	AfDB	Regional (Malawi, Tanzania)	Strengthening Trans-boundary Cooperation and Integrated Natural Resources Management in the Songwe River Basin	Astrid Hillers	28-Sep-16	PIF cleared for WPI by CEO
<b><u>CAF</u></b>										
9581		FP	Climate Change	CEO PIF Clearance for WPI	CAF	Colombia	Transformation of Colombia's Panaela Subsector through the NAMA's initial implementation (CPS-NAMA).	Milena Vasquez	4-Oct-16	Review Sheet sent to Agency for PIF revision
<b><u>CI</u></b>										
9602		FP	Chemicals and Waste	CEO PFD Clearance for WPI	UNEP, CI, UNDP, UNIDO	Global (Burkina Faso, Colombia, Guyana, Indonesia, Kenya, Mongolia, Peru, Philippines)	Global Opportunities for Long-term Development of ASGM Sector - GEF GOLD	Evelyn Swain	28-Sep-16	PFD cleared for WPI by CEO (Rev letter dated 10/4/2016)



ID	IA ID	Type	Focal Area	Decision Sought	Proponen	Country	Project Title	Program Manage	Response Date	Remarks
9597		FP	Multi Focal Area	CEO PIF Clearance for WPI	CI	Ecuador	Strengthening sustainable land and forest management governance in Ecuador as a tool to deliver multiple environmental benefits at broad scale	Mark Zimsky	3-Oct-16	Review Sheet sent to Agency for PIF revision

## DBSA

9616		EA	Chemicals and Waste	CEO PIF Approval	DBSA	South Africa	Enabling activities to review and update the national implementation plan for the Stockholm Convention on Persistent Organic Pollutants	Ogawa Masako	5-Oct-16	Review Sheet sent to Agency for PIF revision
------	--	----	---------------------	------------------	------	--------------	---	--------------	----------	--

## FAO

9537		FP	Multi Focal Area	CEO PIF Clearance for WPI	FAO	Morocco	Revitalising Oasis Agro-ecosystems through a Sustainable, Integrated and Landscape Approach in the Draâ-Tafilalet Region (OASIL)	Jean-Marc Sinnassamy	28-Sep-16	PIF cleared for WPI by CEO
9294		FP	Multi Focal Area	CEO PIF Clearance for WPI	FAO	Mauritania	Integrated Ecosystem Management Program for the Sustainable Human Development in Mauritania	Jean-Marc Sinnassamy	28-Sep-16	PIF cleared for WPI by CEO
5125		FP	Climate Change	CEO endorsement of FSP	FAO	Lebanon	Smart Adaptation of Forest Landscapes in Mountain Areas (SALMA)	Saliha Dobardzic	28-Sep-16	FSP endorsed by CEO
9441		FP	Multi Focal Area	CEO PIF Clearance for WPI	FAO, UNIDO	Colombia	Contributing to the Integrated Management of Biodiversity of the Pacific Region of Colombia to Build Peace	Mark Zimsky	3-Oct-16	PIF recommended for CEO clearance (PM Recommended for CEO clearance)

<b>ID</b>	<b>IA ID</b>	<b>Type</b>	<b>Focal Area</b>	<b>Decision Sought</b>	<b>Proponen</b>	<b>Country</b>	<b>Project Title</b>	<b>Program Manage</b>	<b>Response Date</b>	<b>Remarks</b>
<b><u>IADB</u></b>										
4849		FP	Biodiversity	CEO endorsement of FSP	IADB	Colombia	Sustainable Management and Conservation of Biodiversity in the Magdalena River Basin	Mark Zimsky	3-Oct-16	Review Sheet sent to Agency for FSP revision
5680		FP	Biodiversity	CEO endorsement of FSP	IADB	Colombia	Consolidation of the National System of Protected Areas(SINAP) at National and Regional Levels.	Mark Zimsky	5-Oct-16	FSP endorsed by CEO
<b><u>IFAD</u></b>										
9141		FP	Multi Focal Area	CEO endorsement of FSP	IFAD	Burkina Faso	GEF-IAP:Participatory Natural Resource Management and Rural Development Project in the North, Centre-North and East Regions (Neer Tamba project)	Jean-Marc Sinnassamy	3-Oct-16	FSP endorsed by CEO (10/03/2016 CEO Endorsed)
9523		FP	Multi Focal Area	CEO PIF Clearance for WPI	IFAD	Cameroon	Rural Youth Environmental Initiatives Promotion Project	Jean-Marc Sinnassamy	5-Oct-16	Review Sheet sent to Agency for PIF revision
<b><u>UNDP</u></b>										
9639	5943EA		Climate Change	CEO EA Approval	UNDP	Uruguay	Institutional Strengthening for the preparation of the Fifth National Communication to the UNFCCC	Milena Vasquez	26-Sep-16	Review Sheet sent to Agency for EA revision
9574	5926FP		Climate Change	CEO PIF Clearance for WPI	UNDP	Vanuatu	Barrier Removal for Achieving the National Energy Road Map Targets of Vanuatu (BRANTV)	Ogawa Masako	28-Sep-16	PIF cleared for WPI by CEO

ID	IA ID	Type	Focal Area	Decision Sought	Proponen	Country	Project Title	Program Manage	Response Date	Remarks
9388	5837	FP	Land Degradation	CEO PIF Clearance for WPI	UNDP	Lebanon	Land Degradation Neutrality of Mountain Landscapes in Lebanon	Ulrich Apel	28-Sep-16	PIF cleared for WPI by CEO
9266	5519	FP	Multi Focal Area	CEO PIF Clearance for WPI	UNDP	Eritrea	Restoring Degraded Forest Landscapes and Promoting Community-based, Sustainable and Integrated Natural Resource Management in the Rora Habab Plateau, Nakfa Sub-zoba, Northern Red Sea Region of Eritrea	Jaime Cavelier	28-Sep-16	PIF cleared for WPI by CEO
9553	5503	FP	Biodiversity	CEO PIF Clearance for WPI	UNDP	Mauritius	Mainstreaming IAS Prevention, Control and Management	Cyrille Barnerias	28-Sep-16	PIF cleared for WPI by CEO
9602		FP	Chemicals and Waste	CEO PFD Clearance for WPI	UNEP, CI, UNDP, UNIDO	Global (Burkina Faso, Colombia, Guyana, Indonesia, Kenya, Mongolia, Peru, Philippines)	Global Opportunities for Long-term Development of ASGM Sector - GEF GOLD	Evelyn Swain	28-Sep-16	PFD cleared for WPI by CEO (Rev letter dated 10/4/2016)
9621	5933	FP	Multi Focal Area	CEO PIF Clearance for WPI	UNDP	India	Sixth Operational Phase of the GEF Small Grants Program in India	Maria Del Pilar Barrera Rey	30-Sep-16	Review Sheet sent to Agency for PIF revision (Review sheet sent to Agency)
6913	5392	FP	Climate Change	CEO endorsement of FSP	UNDP	Uzbekistan	Market Transformation for Sustainable Rural Housing Project	Ming Yang	3-Oct-16	Review Sheet sent to Agency for FSP revision
7993	5495	FP	Multi Focal Area	CEO endorsement of FSP	UNDP	Belarus	Conservation-oriented Management of Forests and Wetlands to Achieve Multiple Benefits	Ulrich Apel	3-Oct-16	FSP endorsed by CEO
9124	5573	FP	Multi Focal Area	CEO endorsement of FSP	UNDP	Regional (Ecuador, Peru)	Coastal Fisheries Initiative- Latin America	Leah Karrer	6-Oct-16	FSP circulated to Council before CEO endorsement

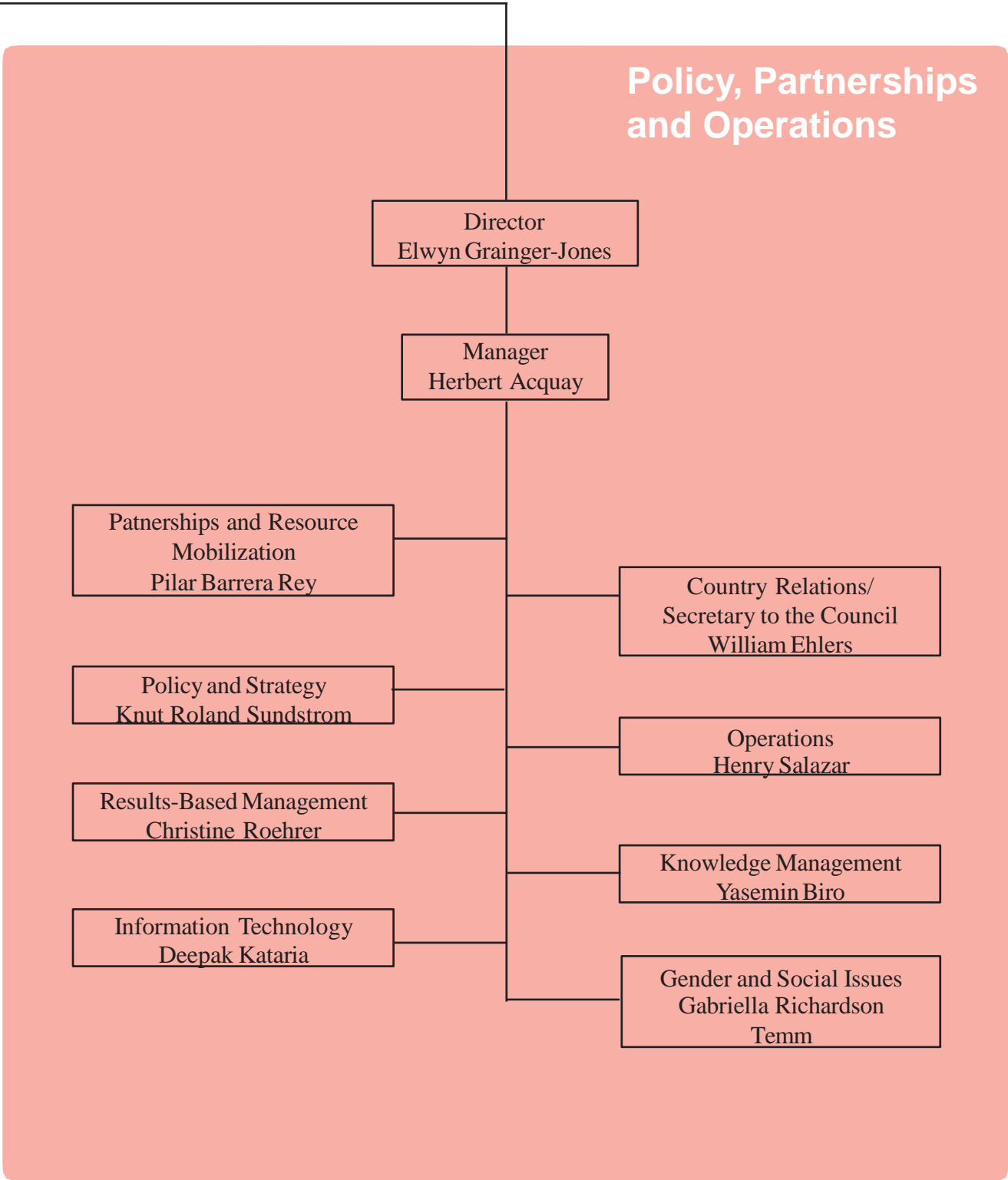
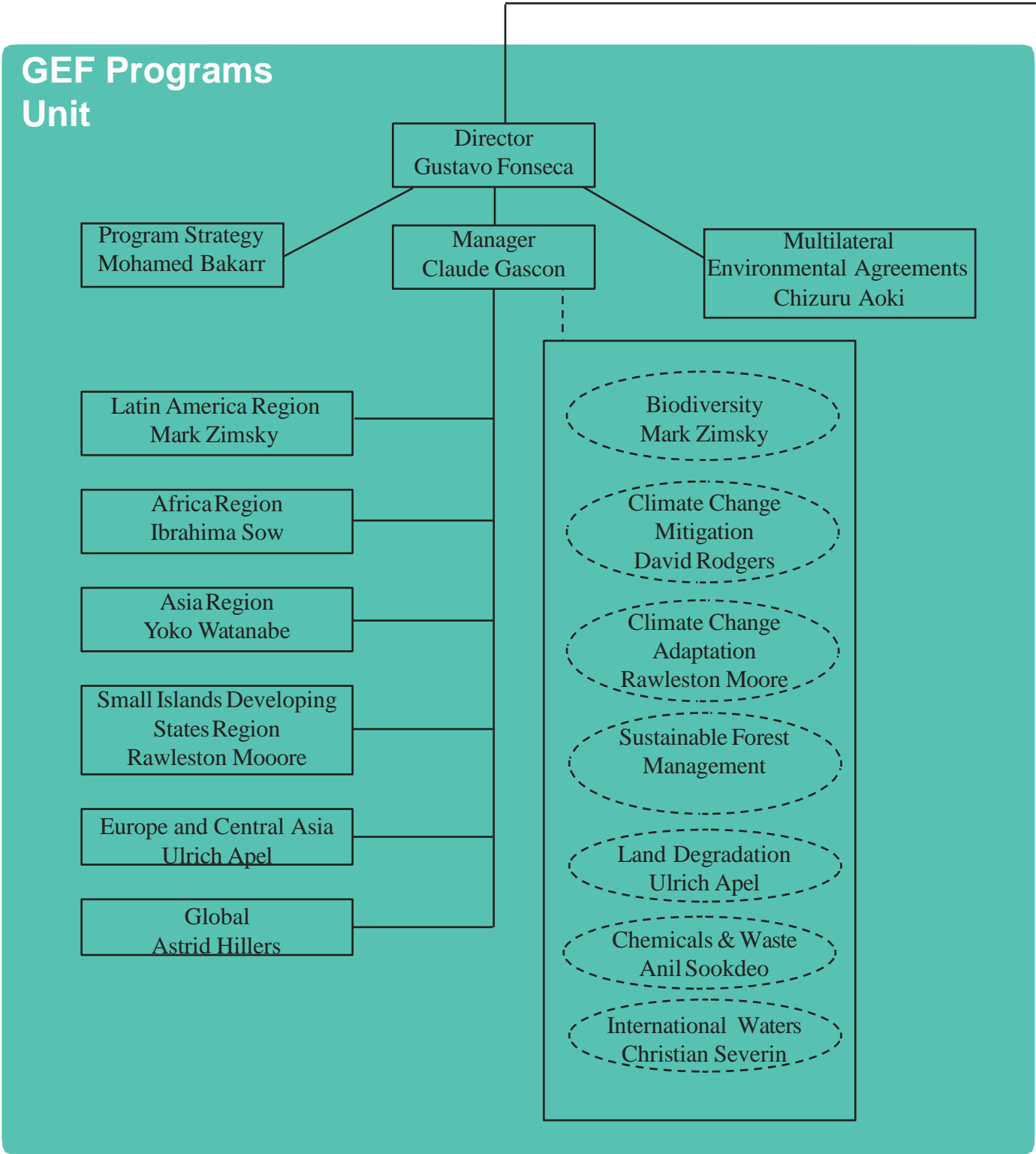
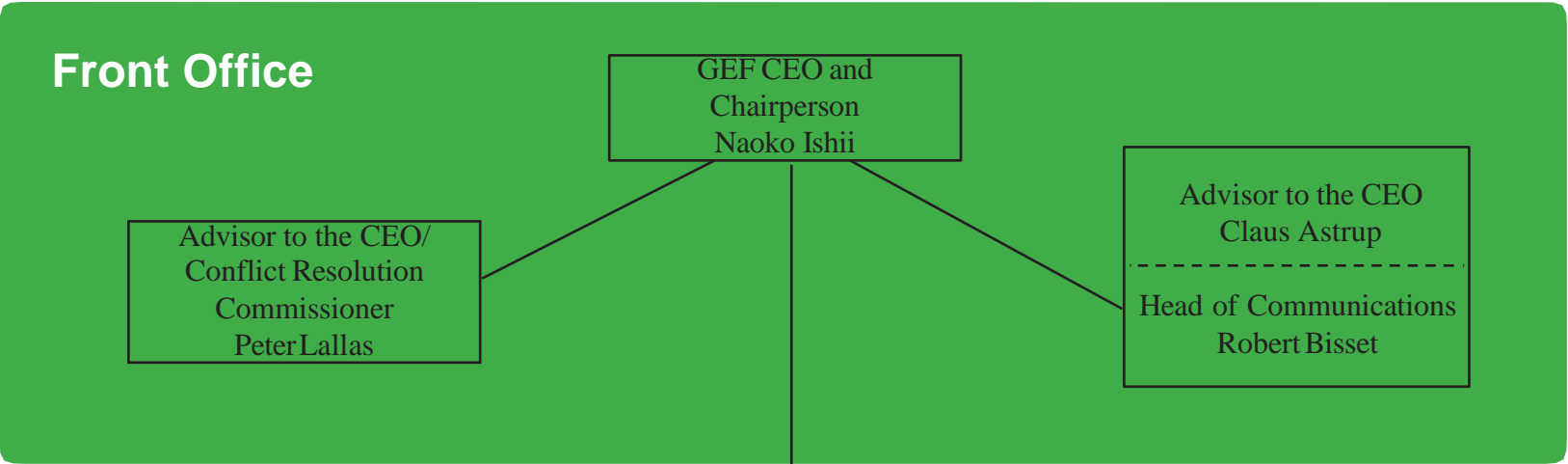
ID	IA ID	Type	Focal Area	Decision Sought	Proponen	Country	Project Title	Program Manage	Response Date	Remarks
9602		FP	Chemicals and Waste	CEO PFD Clearance for WPI	UNEP, CI, UNDP, UNIDO	Global (Burkina Faso, Colombia, Guyana, Indonesia, Kenya, Mongolia, Peru, Philippines)	Global Opportunities for Long-term Development of ASGM Sector - GEF GOLD	Evelyn Swain	28-Sep-16	PFD cleared for WPI by CEO (Rev letter dated 10/4/2016)
5400		FP	International Waters	CEO endorsement of FSP	UNEP	Global	Targeted Research for Improving Understanding of the Global Nitrogen Cycle towards the Establishment of an International Nutrient Management System INMS	Steffen Hansen	3-Oct-16	FSP recommended for endorsement
9545		MSP	Multi Focal Area	CEO MSP Approval	UNEP	Regional (Albania, Montenegro)	Implementation of Ecosystem Approach in the Adriatic Sea through Marine Spatial Planning	Steffen Hansen	6-Oct-16	MSP recommended for CEO approval (Docs circulating for clearance/signature)
9412		FP	Chemicals and Waste	CEO PIF Clearance for WPI	UNEP	Brazil	ENVIRONMENTALLY SOUND MANAGEMENT (ESM) OF PERSISTENT ORGANIC POLLUTANTS (POPS)	Evelyn Swain	6-Oct-16	Review Sheet sent to Agency for PIF revision

## UNIDO

9602		FP	Chemicals and Waste	CEO PFD Clearance for WPI	UNEP, CI, UNDP, UNIDO	Global (Burkina Faso, Colombia, Guyana, Indonesia, Kenya, Mongolia, Peru, Philippines)	Global Opportunities for Long-term Development of ASGM Sector - GEF GOLD	Evelyn Swain	28-Sep-16	PFD cleared for WPI by CEO (Rev letter dated 10/4/2016)
9441		FP	Multi Focal Area	CEO PIF Clearance for WPI	FAO, UNIDO	Colombia	Contributing to the Integrated Management of Biodiversity of the Pacific Region of Colombia to Build Peace	Mark Zimsky	3-Oct-16	PIF recommended for CEO clearance (PM Recommended for CEO clearance)

## World Bank

<b>ID</b>	<b>IA ID</b>	<b>Type</b>	<b>Focal Area</b>	<b>Decision Sought</b>	<b>Proponen</b>	<b>Country</b>	<b>Project Title</b>	<b>Program Manage</b>	<b>Response Date</b>	<b>Remarks</b>
9575	160789	FP	Multi Focal Area	CEO PIF Clearance for WPI	World Bank	Sudan	Sudan Sustainable Natural Resources Management Project- Additional Financing	Jaime Cavelier	4-Oct-16	Review Sheet sent to Agency for PIF revision
9160	15596	MSP	International Waters	CEO MSP Approval	World Bank	Regional (Africa)	Regional Partnership for African Fisheries Policy Reform (RAFIP)	Astrid Hillers	5-Oct-16	MSP approved by CEO (Revised MSP approved letter sent to agency.)
9596	160613	FP	Climate Change	CEO PIF Clearance for WPI	World Bank	Burundi	Landscape Restoration project	Katya Kuang-Idba	5-Oct-16	Review Sheet sent to Agency for PIF revision
9578	160680	FP	Multi Focal Area	CEO PIF Clearance for WPI	World Bank	Colombia	Sustainable Low Carbon Development in Colombia's Orinoquia Region	Mark Zimsky	5-Oct-16	Review Sheet sent to Agency for PIF revision



**Naoko Ishii**  
Chief Executive Officer and Chairperson  
[nishii@thegef.org](mailto:nishii@thegef.org)

## FRONT OFFICE

**Peter Lallas**

Advisor to the Chief Executive Officer  
[plallas@thegef.org](mailto:plallas@thegef.org)  
+1 202 473 9732

**Amornrat Ning Poopech**

Resource Management Officer  
[apoopech@thegef.org](mailto:apoopech@thegef.org)  
+1 202 458 4366

**Esther Pormes**

Senior Executive Assistant  
[epormes@thegef.org](mailto:epormes@thegef.org)  
+1 202 473 8736

**Claus Pram Astrup**

Advisor to the Chief Executive Officer  
[castrup@worldbank.org](mailto:castrup@worldbank.org)  
+ 1 202 478 7270

**Julienne Kouame**

Program Analyst  
[jkouame@thegef.org](mailto:jkouame@thegef.org)  
+1 202 473 8736

**Diego Riano Posada**

Special Assistant  
[edrianoposada@thegef.org](mailto:edrianoposada@thegef.org)  
+1 202 473 1444

## Communications

**Robert Bisset**

Head of Communications  
[chofer@thegef.org](mailto:chofer@thegef.org)  
+1 202 458 5191

**Patrizia Cocca**

Communications Officer and KM Coordinator  
[pcocca@thegef.org](mailto:pcocca@thegef.org)  
+1 202 458 0234

**Alua Satybaldina-Kennedy**

Communications Consultant  
[asatybaldina@worldbank.org](mailto:asatybaldina@worldbank.org)

**Christian Hofer**

Senior Communications Officer  
[chofer@thegef.org](mailto:chofer@thegef.org)  
+1 202 458 0936

**Camila Perez Gabilondo**

ET Temporary - Communications  
[cperez@thegef.org](mailto:cperez@thegef.org)  
+1 202 458 0895

---

Mailing Address:

**GEF Secretariat**

1818 H Street, NW, MSN N8-800  
Washington, D.C. 20433  
+1 202 473 0508; Fax: +1 202 522 3240/3245

## POLICY AND OPERATIONS

**Akila Nazneen**  
Financial Assistant  
[anazneen@thegef.org](mailto:anazneen@thegef.org)  
+1 202 473 1760

**Christina Bogyo**  
Senior Program Assistant  
[cbogyo@thegef.org](mailto:cbogyo@thegef.org)  
+1 202 473 6974

**Deepak Kataria**  
Coordinator - Information Technology  
[dkataria@thegef.org](mailto:dkataria@thegef.org)  
+1 202 473 3881

**Henry Salazar**  
Coordinator - Operations  
[hsalazar@thegef.org](mailto:hsalazar@thegef.org)  
+1 202 473 8226

**Juman Byun**  
Business Solutions Officer  
[jbyun@thegef.org](mailto:jbyun@thegef.org)  
+1 202 458 7987

**Lesly Rigaud**  
Client Technologies Officer  
[lrigaud@thegef.org](mailto:lrigaud@thegef.org)  
+1 202 473 3881

**Naiying Peng**  
Operations Analyst  
[npeng@thegef.org](mailto:npeng@thegef.org)  
+1 202 458 9580

**Olha Krushelnytska**  
Operations Officer  
[okrushelnytska@thegef.org](mailto:okrushelnytska@thegef.org)  
+1 202 458 5839

**Amanda Adams**  
Program Assistant  
[aadams@thegef.org](mailto:aadams@thegef.org)  
+1 202 473 9878

**Christine Roehrer**  
Coordinator –Lead Results Based Management  
[croehrer@worldbank.org](mailto:croehrer@worldbank.org)  
+1 202 473-0337

**Gabriella Richardson-Temm**  
Coordinator – Gender and Social Issues  
[grichardsontemm@thegef.org](mailto:grichardsontemm@thegef.org)

**Herbert Acquay**  
Manager - Policy, Partnerships and Operations  
[hacquay@worldbank.org](mailto:hacquay@worldbank.org)  
+1 202 473 1043

**Knut Roland Sundstrom**  
Coordinator - Policy and Strategy  
[ksundstrom@thegef.org](mailto:ksundstrom@thegef.org)  
+1 202 473 7510

**Minna Maria Kononen**  
Country Relations Officer  
[nkononen@thegef.org](mailto:nkononen@thegef.org)  
+1 202 473 9402

**Nicolas Alejandro Marquez Pizzanelli**  
Operations Analyst  
[nmarquez@thegef.org](mailto:nmarquez@thegef.org)  
+1 202 473 9522

**Olivier Besson**  
Program Assistant  
[obesson@thegef.org](mailto:obesson@thegef.org)  
+1 202 473-8935



**Omid Parhizkar**  
Operations Officer  
[oparhizkar@thegef.org](mailto:oparhizkar@thegef.org)  
+1 202 458 2186

**Pilar Barrera**  
Coordinator - Partnerships and  
Resource Mobilization  
[pbarrera@thegef.org](mailto:pbarrera@thegef.org)  
+1 202 458 9891

**Raul Rodriguez**  
Temporary  
[rrodriguez@thegef.org](mailto:rrodriguez@thegef.org)

**Regine Mpoyi**  
Program Assistant  
[rmpoyi@thegef.org](mailto:rmpoyi@thegef.org)  
+1 202 473 2754

**Seo-Jeong Yoon**  
Policy Officer  
[syoon@thegef.org](mailto:syoon@thegef.org)  
+1 202 473 7832

**Susan Waithaka**  
Country Relations Officer  
[swaithaka1@thegef.org](mailto:swaithaka1@thegef.org)  
+1 202 473 5457

**William Ehlers**  
Coordinator – Country Relations/  
Secretary to the Council  
[wehlers@thegef.org](mailto:wehlers@thegef.org)  
+1 202 458 9436

**Oreste Maia Andrade**  
Operations Analyst  
[omaiaandradejr@thegef.org](mailto:omaiaandradejr@thegef.org)  
+1 202 458 9387

**Quynh Xuan Thi Phan**  
Financial Officer  
[qphan1@worldbank.org](mailto:qphan1@worldbank.org)  
+1 202 458 4760

**Ramon Prudencio C de Mesa**  
Operations Officer  
[rmesa@thegef.org](mailto:rmesa@thegef.org)  
+1 202 458 9285

**Robert Schreiber**  
Program Coordinator  
[rschreiber@thegef.org](mailto:rschreiber@thegef.org)  
+1 202 458 0288

**Sonja Sabita Teelucksingh**  
Environmental Specialist  
[steelucksingh@thegef.org](mailto:steelucksingh@thegef.org)  
+1 202 458 4004

**Thomas Biegel**  
Consultant  
[tbiegel@thegef.org](mailto:tbiegel@thegef.org)  
+1 202 473 9252

**Yasemin Biro**  
Coordinator - Knowledge Management  
[ybiro@thegef.org](mailto:ybiro@thegef.org)  
+1 202 473 1550

---

## PROGRAMS

**Gustavo Fonseca**  
Director  
[gfonseca@thegef.org](mailto:gfonseca@thegef.org)  
+ 1 202 458 4818

**Anil Bruce Sookdeo**  
Chemicals and Waste Focal Area Coordinator  
[asookdeo@thegef.org](mailto:asookdeo@thegef.org)  
+1 202 458 0683

**Astrid Hillers**  
Senior Environmental Specialist  
[ahillers@thegef.org](mailto:ahillers@thegef.org)  
+1 202 458 8173

**Christian Severin**  
International Waters Focal Area Coordinator  
[cseverin@thegef.org](mailto:cseverin@thegef.org)  
+1 202 458 2001

**Cyrille Barnerias**  
Senior Environment Specialist  
[cbarnerias@thegef.org](mailto:cbarnerias@thegef.org)  
+1 202 473 8871

**Diana Movius**  
Consultant  
[dmovius@thegef.org](mailto:dmovius@thegef.org)  
+1 202 473 4346

**Evelyn Swain**  
Environment Specialist  
[eswain@thegef.org](mailto:eswain@thegef.org)  
+1 202 473 1151

**Flavius Mihaies**  
Consultant, Climate and Chemicals  
[fmihaies@thegef.org](mailto:fmihaies@thegef.org)  
+1 202 560 4934

**Ibrahima Sow**  
Africa Regional Coordinator  
[isow@thegef.org](mailto:isow@thegef.org)  
+1 202 473 2716

**Asha Imani Bobb Semple**  
Operations Analyst  
[abobbsemple@thegef.org](mailto:abobbsemple@thegef.org)  
+1 202 473 989

**Chizuru Aoki**  
Lead Environmental Specialist -  
Multilateral Environmental Agreements  
[caoki@thegef.org](mailto:caoki@thegef.org)  
+1 202 473 6068

**Claude Gascon**  
Lead Program Manager  
[cgascon@thegef.org](mailto:cgascon@thegef.org)  
+1 202 458 9755

**David Rodgers**  
Climate Change Mitigation Focal Area  
Coordinator  
[drodgers@thegef.org](mailto:drodgers@thegef.org)  
+1 202 458 9869

**Dustin Schinn**  
Operations Analyst  
[dschinn@thegef.org](mailto:dschinn@thegef.org)  
+1 202 458 1234

**Fareeha Iqbal**  
Climate Change Specialist  
[fiqball@thegef.org](mailto:fiqball@thegef.org)  
+1 202 458 9593

**Glynis Barber**  
Program Assistant  
[gbarber@thegef.org](mailto:gbarber@thegef.org)  
+1 202 473 9647

**Jaime Cavelier**  
Senior Biodiversity Specialist  
[jcavelier@thegef.org](mailto:jcavelier@thegef.org)  
+1 202 473 4886

**Jean-Marc Sinnassamy**  
Senior Environmental Specialist  
[jsinnassamy@thegef.org](mailto:jsinnassamy@thegef.org)  
+1 202 478 8060

**Kathryn Cherrie**  
Senior Program Assistant  
[kcherrie@thegef.org](mailto:kcherrie@thegef.org)  
+1 202 458 1460

**Kettly Denis**  
Program Assistant  
[kdenis@thegef.org](mailto:kdenis@thegef.org)  
+1 202 473 0825

**Leah Karrer**  
Senior Environmental Specialist  
[lkarrer@thegef.org](mailto:lkarrer@thegef.org)  
+1 202 473 8364

**Lulwa Ali**  
Senior Environmental Specialist  
[lali1@thegef.org](mailto:lali1@thegef.org)  
+1 202 473 5618

**Mark Zimsky**  
Latin America Regional Coordinator/ Biodiversity  
Focal Area Coordinator  
[mzimsky@thegef.org](mailto:mzimsky@thegef.org)  
+1 202 473 7855

**Masako Ogawa**  
Senior Environment Specialist  
[mogawa2@thegef.org](mailto:mogawa2@thegef.org)  
+1 202 458 2789

**Milena Gonzalez Vasquez**  
Junior Professional Associate  
[mgonzalezvasquez@thegef.org](mailto:mgonzalezvasquez@thegef.org)  
+1 202 458 1284

**Ming Yang**  
Senior Climate Change Specialist  
[myang@thegef.org](mailto:myang@thegef.org)  
+1 202 473 5707

**Mohamed Imam Bakarr**  
Lead Environmental Specialist - Program Strategy  
[mbakarr@thegef.org](mailto:mbakarr@thegef.org)  
+1 202 458 8890

**Monica Fernandes**  
Senior Program Assistant  
[mfernandes@thegef.org](mailto:mfernandes@thegef.org)  
+1 202 473 9647

**Nhu Quynh Phan**  
Program Assistant  
[nphan@thegef.org](mailto:nphan@thegef.org)  
+1 202 473 4236

**Nicole Glineur**  
Senior Environmental Specialist  
[nglineur@thegef.org](mailto:nglineur@thegef.org)  
+1 202 473 2512

**Pascal Martinez**  
Senior Climate Change Specialist  
[pmartinez2@thegef.org](mailto:pmartinez2@thegef.org)  
+1 202 458-9755

**Paul Hartman**  
Senior Environmental Specialist  
[phartman@thegef.org](mailto:phartman@thegef.org)

**Rawlestone Moore**  
SIDS Regional Coordinator/ Climate Change  
Adaptation Focal Area Coordinator  
[rmoore1@thegef.org](mailto:rmoore1@thegef.org)  
+ 1 202 473 8231

**Saliha Dobardzic**  
Senior Climate Change Specialist  
[sdobardzic@thegef.org](mailto:sdobardzic@thegef.org)  
+1 202 473 5943

**Shakil Kayani**  
Program Assistant  
[skayani@thegef.org](mailto:skayani@thegef.org)  
+1 202 458 4680

**Sarah Wyatt**  
Operations Analyst  
[swyatt@thegef.org](mailto:swyatt@thegef.org)  
+1 202 473 0534

**Steffen Hansen**  
Junior Professional Officer  
[shansen@thegef.org](mailto:shansen@thegef.org)  
+1 202 458 8796

**Tigest Tirfe**  
Program Assistant  
[ttirfe@thegef.org](mailto:ttirfe@thegef.org)  
+1 202 458 9297

**Ulrich Apel**  
Europe and Central Asia Regional Coordinator/ Land  
Degradation Focal Area Coordinator  
[uapel@thegef.org](mailto:uapel@thegef.org)  
+1 202 473 2573

**Xiaomei Tan**  
Climate Change Specialist  
[xtan1@thegef.org](mailto:xtan1@thegef.org)  
+1 202 473 7448

**Yoko Watanabe**  
Asia Regional Coordinator  
[ywatana@thegef.org](mailto:ywatanabe@thegef.org)  
+1 202 473 9847

---

## GEF DIRECTORY OF ADDRESSEES

### GEF Secretariat

**GEF Secretariat<sup>1</sup>**  
**Program Coordination Registry**  
1818 H Street, NW  
Washington, D.C. 20433, USA  
[gcoordination@thegef.org](mailto:gcoordination@thegef.org)

"UUNO: .S. Henry Salazar  
Coordinator-0QFSBUJPOT  
[hsalazar@thegef.org](mailto:hsalazar@thegef.org)  
+1 202 473 8226

### GEF Trustee

**International Bank for Reconstruction and Development (The World Bank) Registry**  
1818 H Street, NW  
Washington, D.C. 20433, USA  
[geftrustee@worldbank.org](mailto:geftrustee@worldbank.org)

Mr. Praveen Desabatla  
Team Leader, DFPTF  
[pdesabatla@worldbank.org](mailto:pdesabatla@worldbank.org)  
+1 202 458 2099

### Convention Secretariats

**UN Convention on Biological Diversity (CBD)**  
413 rue Saint-Jacques, Suite 800  
Montreal, Quebec, Canada H2Y 1 N9  
[Secretariat@cbd.int](mailto:Secretariat@cbd.int)

Attn: Mr. Braulio F. de Souza Dias  
Executive Secretary  
*GEF Contact Person: Mr. Yibin Xiang*  
*Program Officer*  
[Yibin.xiang@cbd.int](mailto:Yibin.xiang@cbd.int)  
+1 514 288 2220

**UN Framework on Climate Change Convention (UNFCCC)**  
Haus Carstanjen  
Martin Luther King Strasse 8  
53175 Bonn, Germany  
[secretariat@unfccc.int](mailto:secretariat@unfccc.int)

Attn: Ms. Christiana Figueres  
Executive Secretary  
*GEF Contact Person(s):*  
- *Ms. Deschen Tsering*  
[DTsering@unfccc.int](mailto:DTsering@unfccc.int)  
- *Mr. Alejandro Kilpatrick*  
[AKilpatrick@unfccc.int](mailto:AKilpatrick@unfccc.int)

[gefenabling.activities@unfccc.int](mailto:gefenabling.activities@unfccc.int)  
[gefprojects@unfccc.int](mailto:gefprojects@unfccc.int)

**Secretariat of the Basel, Rotterdam and Stockholm Conventions**  
UNEP International Environment House 1  
11-13 Chemin des Anemones  
1219 Chatelaine, Geneva, Switzerland

Attn: Dr. Rolph Payet  
Executive Secretary  
*Mr. Frank Moser*  
*GEF Focal Point*  
*Office of the Executive Secretary*  
[frank.moser@brsmeas.org](mailto:frank.moser@brsmeas.org)  
+41 22 917 8951

<sup>1</sup> GEF Secretariat's physical address: 1899 Pennsylvania Avenue, NW, Washington, D.C. 20006

---

**UN Convention to Combat Desertification  
(UNCCD)**

Herrmann-Ehlers Str. 10  
D-53113 Bonn, Germany  
[secretariat@unccd.int](mailto:secretariat@unccd.int)

Attn: Ms. Monique Barbut  
Executive Secretary

*GEF Contact Person: Ms. Anja Thust  
Program Officer, FCMI Unit*

[athust@unccd.int](mailto:athust@unccd.int)  
+49 228 815 2828

---

**Interim Secretariat of the Minamata Convention**

International Environment House 1  
13, chemin des Anémones  
CH-1219 Chatelaine, Geneva  
Switzerland

Mr. Jacob Duer  
Coordinator, Minamata Convention

[jacob.duer@unep.org](mailto:jacob.duer@unep.org)  
+41 22 917 82 17

---

## STAP Panel and Secretariat

### Panel

**Rosina Bierbaum**

Chairperson

[rbierbau@umich.edu](mailto:rbierbau@umich.edu)

+1 734 763 8675

---

**Ralph E. Sims**

Panel Member on Climate Change Mitigation

[R.E.Sims@massey.ac.nz](mailto:R.E.Sims@massey.ac.nz)

+64 21 166 4555

---

**Brian Child**

Panel Member on Biodiversity

[bchild@ufl.edu](mailto:bchild@ufl.edu)

+352 392 0494

---

**Ricardo Barra**

Panel Member on Chemicals & Waste

[ricbarra@udec.cl](mailto:ricbarra@udec.cl)

56-41-2204002

---

**Annette Cowie**

Panel Member on Land Degradation

[annette.cowie@une.edu.au](mailto:annette.cowie@une.edu.au)

+61 2 677 28080

---

**Jakob Granit**

Panel Member on International Waters

[jakob.granit@sei-international.org](mailto:jakob.granit@sei-international.org)

+46 73 707 8536

---

**Anand Patwardhan**

Panel Member on Adaptation

[apat@umd.edu](mailto:apat@umd.edu)

+1 301 405 3413

---

**Michael Stocking**

Advisor to the STAP Chair

[m.stocking@uea.ac.uk](mailto:m.stocking@uea.ac.uk)

+44 1603 592 339

---

**Thomas E. Lovejoy**

Advisor to the STAP Chair

[tlovejoy@unfoundation.org](mailto:tlovejoy@unfoundation.org)

---

### Secretariat

**Thomas Hammond**

STAP Secretary

[thomas.hammond@unep.org](mailto:thomas.hammond@unep.org)

+1 202 974 1318

---

**Guadalupe Duron**

Programme Officer

[guadalupe.duron@unep.org](mailto:guadalupe.duron@unep.org)

+1 202 974 1313

---

**Robin Burgess**

Programme Assistant

[robin.burgess@unep.org](mailto:robin.burgess@unep.org)

+1 202 974 1311

---

**Christine Wellington-Moore**

Senior Programme Officer

[christine.wellington-moore@unep.org](mailto:christine.wellington-moore@unep.org)

+1 202 974 1303

---

**Lev Neretin**

Senior Programme Officer

[lev.neretin@unep.org](mailto:lev.neretin@unep.org)

+1 202 621 5020

---

**Sarah Lebel**

Climate Adaptation and Resilience Specialist

[sarah.lebel@unep.org](mailto:sarah.lebel@unep.org)

+1 202 621 5036

---

**Virginia Gorsevski**

Consultant

[virginia.gorsevski@unep.org](mailto:virginia.gorsevski@unep.org)

+1 202 621 5039

---

## GEF Agency Secretariats

### **African Development Bank (AfDB) Registry**

Headquarters  
01 BP 1387 Abidjan 01  
Côte d'Ivoire  
[Gef\\_afdb@afdb.org](mailto:Gef_afdb@afdb.org)

Mr. Mahamat Assouyouli  
GEF Coordinator  
[m.assouyouli@afdb.org](mailto:m.assouyouli@afdb.org)

*Copy to:*  
*Mr. Kurt Lonsway*  
*Division Manager, Environment and Climate Change*  
[k.lonsway@afdb.org](mailto:k.lonsway@afdb.org)

### **Asian Development Bank (ADB) Registry**

6 ADB Avenue  
Mandaluyong City 1550  
Metro Manila, Philippines  
[adbgef@adb.org](mailto:adbgef@adb.org)

Attn: Mr. Nessim Ahmad  
Director, Environment and Social Safeguards  
and GEF Official Focal Point  
[njahmad@adb.org](mailto:njahmad@adb.org)

*Copy to:*  
*Mr. Bruce Dunn*  
*ADB/GEF Coordinator*  
[bdunn@adb.org](mailto:bdunn@adb.org)  
+632 683 1922/ +632 683 1923

### **European Bank for Reconstruction and Development (EBRD) Registry**

One Exchange Square  
London EC2A 2JN, United Kingdom  
[ebrdgef@ebrd.com](mailto:ebrdgef@ebrd.com)

Attn: Ms. Marta Simonetti  
Senior Manager  
(Multilateral Funds – Climate and Environment)  
EBRD GEF Executive Coordinator  
Donor Co-Financing – VP Policy  
[simonetm@ebrd.com](mailto:simonetm@ebrd.com)  
+ 0044 (0) 207338 7259  
+ 0044 (0) 7921 039815

### **United Nations Food and Agriculture Organization (FAO) Registry**

Viale Dell Terme di Caracalla  
00153 Rome, Italy  
[GEF-Coordination-Unit@fao.org](mailto:GEF-Coordination-Unit@fao.org)

Attn: Mr. Gustavo Merino  
Director, Investment Centre Division  
[TCI-Director@fao.org](mailto:TCI-Director@fao.org)  
[faogef@fao.org](mailto:faogef@fao.org)  
+3906 570 54477

*Copy to:*  
*Mr. Jeffrey Griffin*  
*Senior Coordinator - GEF*  
*Investment Center Division*  
[Jeffrey.Griffin@fao.org](mailto:Jeffrey.Griffin@fao.org)  
+3906 570 55680



## GEF Agency Secretariats cont'd

### **Inter-American Development Bank (IDB) Registry**

1300 New York Avenue, NW  
Washington, D.C. 20577, USA  
[idb-gef@iadb.org](mailto:idb-gef@iadb.org)

Mr. Michael Collins  
GEF Coordinator  
[michaelc@iadb.org](mailto:michaelc@iadb.org)  
+ 1 202 623 2158

### **International Bank for Reconstruction and Development (The World Bank) Registry**

1818 H Street, NW Washington,  
D.C. 20433, USA  
[wbgefoperations@worldbank.org](mailto:wbgefoperations@worldbank.org)

Ms. Karin Shepardson  
GEF Executive Coordinator  
[kshepardson@worldbank.org](mailto:kshepardson@worldbank.org)  
+ 1 202 458 1398

*Copy to:*  
*Dominique Isabelle Kayser*  
[dkayser@worldbank.org](mailto:dkayser@worldbank.org)

### **International Fund for Agricultural Development (IFAD) Registry**

Via Paolo di Dono, 44  
00142 Rome, Italy  
[ECDmailbox@ifad.org](mailto:ECDmailbox@ifad.org)

Mr. Perin Saint-Ange  
Associate Vice President,  
Programme Management Department  
[p.saintange@ifad.org](mailto:p.saintange@ifad.org)  
+39 06 5459 2448

*Copy to:*  
*Ms. Margarita Astrálaga*  
*Director, Environment and Climate Division*  
[m.astralaga@ifad.org](mailto:m.astralaga@ifad.org)  
*Tel: +39 06 5459 2151*

*Ms. Sheila Mwanundu*  
*GEF Coordinator*  
[s.mwanundu@ifad.org](mailto:s.mwanundu@ifad.org)  
*Tel: +39 06 5459 2031*

*Ms. Aisha Nazario*  
[a.nazario@ifad.org](mailto:a.nazario@ifad.org)  
*Tel: +39 06 5459 2459*

*Ms. Estibalitz Morras*  
[e.morras@ifad.org](mailto:e.morras@ifad.org)  
*Tel: +39 06 5459 2438*

### **United Nations Environment Programme (UNEP) Registry**

United Nations Avenue  
Gigiri, PO Box 30552  
00100 Nairobi, Ken ya  
[Unepgef@unep.org](mailto:Unepgef@unep.org)

Local Office:  
900 17th Street, NW  
Suite 506, Washington, D.C. 20006

Ms. Brennan VanDyke  
GEF Executive Coordinator  
Deputy Director, Office for Operations  
[brennan.vandyke@unep.org](mailto:brennan.vandyke@unep.org)  
Tel: (917) 367-2114

*Copy to:*  
*Ms. Kelly West*  
*Senior GEF Portfolio Manager*  
*Office for Operations*  
[Kelly.West@unep.org](mailto:Kelly.West@unep.org)

## GEF Agency Secretariats cont'd

### **United Nations Industrial Development Organization (UNIDO) Registry**

Vienna International Centre  
PO Box 300  
A-1400 Vienna, Austria  
[gef@unido.org](mailto:gef@unido.org)

Mr. Juergen Hierold  
GEF Coordinator  
[J.Hierold@unido.org](mailto:J.Hierold@unido.org)  
+43 1 26026 4565

*Copy to:*  
*Ms. Pamela Mikschofsky*  
[p.mikschofsky@unido.org](mailto:p.mikschofsky@unido.org)

### **United Nations Development Programme (UNDP) Registry**

304 East 45th Street  
New York, NY 10017, USA  
[undpgef@undp.org](mailto:undpgef@undp.org)

Attn: Ms. Adriana Dinu  
GEF Executive Coordinator  
[Adriana.dinu@undp.org](mailto:Adriana.dinu@undp.org)  
+1 212 906 5143

## GEF Project Agency Secretariats

**Corporación Andina de Fomento (CAF)**  
380 Enrique Canaval Moreyra Ave., 13th Floor,  
San Isidro, Lima  
Lima 27, Peru  
[CAFGEF@caf.com](mailto:CAFGEF@caf.com)

Attn: René Gómez García Palao  
Senior Executive  
[rgomezgarcia@caf.com](mailto:rgomezgarcia@caf.com)  
+511-710-8530

*Copy to:*  
*Ms. Ligia Castro de Doens,*  
*Director*  
*Environment*  
[lcastro@caf.org](mailto:lcastro@caf.org)

### **Conservation International (CI)**

2011 Crystal Drive, Suite 500  
Arlington VA, 22202  
USA  
[CIGEF@conservation.org](mailto:CIGEF@conservation.org)

Attn: Mr. Miguel Morales  
Vice President/ Managing Director  
CI-GEF Project Agency  
[mamorales@conservation.org](mailto:mamorales@conservation.org)

*Copy to:*  
[osamaroo@conservation.org](mailto:osamaroo@conservation.org)

## GEF Project Agency Secretariats cont'd

---

**Development Bank of Southern Africa  
(DBSA)**

1258 Lever Road, Headway Hill  
Midrand, 1685  
South Africa  
[DBSAGEF@dbsa.org](mailto:DBSAGEF@dbsa.org)

Attn: Ms. Nomsa T. Zondi  
GEF Coordinator  
[nomsaz@dbsa.org](mailto:nomsaz@dbsa.org)  
+27 11 313 3491

**Foreign Economic Cooperation Office  
(FECO)**

Ministry of Environmental Protection  
ECO Building  
No.5 Houyingfang Hutong  
Xicheng District, Beijing 100035, China  
[FECOGEF@mepfeco.org.cn](mailto:FECOGEF@mepfeco.org.cn)

Attn: Mr. Xiao Xuezhi  
Deputy Director General  
[xiao.xuezhi@mepfeco.org.cn](mailto:xiao.xuezhi@mepfeco.org.cn)  
+ 86-10-82268807

*Copy to:*  
*Ms. Chen Haijun*  
*Director,*  
[chen.haijun@mepfeco.org.cn](mailto:chen.haijun@mepfeco.org.cn)  
+ 86-10-82268846

Ms. Yan Wei  
Senior Project Manager  
[yan.wei@mepfeco.org.cn](mailto:yan.wei@mepfeco.org.cn)  
+ 86-10-82268848

**International Union for Conservation of  
Nature (IUCN)**

Rue Mauverney, 28  
CH-1196 Gland,  
Switzerland  
[IUCNGEF@iucn.org](mailto:IUCNGEF@iucn.org)

Attn: Cyrie Sendashonga  
Global Director, Policy and Programme  
[Cyriaque.Sendashonga@iucn.org](mailto:Cyriaque.Sendashonga@iucn.org)  
+41 22 999 03 17

*Copy to:*  
*Mr. Jean-Yves Pirot,*  
*Head, GEF Coordination Unit*  
[jean-yves.pirot@iucn.org](mailto:jean-yves.pirot@iucn.org)  
+41 22 999 02 56

*Mr. Sébastien Delahaye*  
*Portfolio Manager*  
*GEF Coordination Unit*  
[Sebastien.Delahaye@iucn.org](mailto:Sebastien.Delahaye@iucn.org)  
+41 22 999 02 51

---

## GEF Project Agency Secretariats cont'd

---

**World Wildlife Fund, Inc. (WWF-US)**  
1250 24th St, NW  
Washington, DC 20037-1193  
[WWFGEF@wwfus.org](mailto:WWFGEF@wwfus.org)

Attn: Dr. David S. McCauley  
Senior Vice President  
Policy and Government Affairs  
[david.mccauley@wwfus.org](mailto:david.mccauley@wwfus.org)  
+1-202-495-4159

*Copy to:*  
*Mr. Hervé Lefevre*  
*Senior Director, GEF Relations and*  
*GEF Coordinator*  
[Herve.Lefevre@wwfus.org](mailto:Herve.Lefevre@wwfus.org)  
+1-202-459-8533

**Fundo Brasileiro para a Biodiversidade (FUNBIO)**  
Rua Voluntários da Pátria, 286 5º andar  
Botafogo, Rio de Janeiro, RJ  
22270-014  
[funbiogef@funbio.org.br](mailto:funbiogef@funbio.org.br)

Attn: Fabio Heuseler Ferreira Leite  
GEF Coordinator  
[fabio.leite@funbio.org.br](mailto:fabio.leite@funbio.org.br)  
+ 55 21 2123-5326

*Copy to:*  
[agenciageg@funbio.org.br](mailto:agenciageg@funbio.org.br)

---

**DISTRIBUTION LIST WHEN SUBMITTING PROJECT PROPOSALS  
FOR GEF CEO APPROVAL/ENDORSEMENT**

As a rule, all GEF Agencies are expected to circulate their project proposals to the GEF Secretariat, GEF Agencies, and STAP and to the relevant Convention Secretariat.

**Standard Distribution List for all projects (PIF, PPG, FSP, MSP, and EA):**

gcoordination@thegef.org  
STAP.Secretariat@unep.org  
thomas.hammond@unep.org  
adbgef@adb.org  
bdunn@adb.org  
njahmad@adb.org  
gef\_afdb@afdb.org  
m.assouyouti@afdb.org  
k.lonsway@afdb.org  
ambengue@boad.org  
dtoe@boad.org  
itraore@boad.org  
straore@boad.org  
ytoure@boad.org  
CAFGEF@caf.com  
rgomezgarcia@caf.com  
lcastro@caf.org  
CIGEF@conservation.org  
lspijkerman@conservation.org  
osamaroo@conservation.org  
DBSAGEF@dbsa.org  
nomsaz@dbsa.org  
ebrdgef@ebrd.com  
simonetm@ebrd.com  
GEF-Coordination-Unit@fao.org  
faogef@fao.org  
TCI-Director@fao.org  
Jeffrey.Griffin@fao.org  
FECOGEF@mepfeco.org.cn  
xiao.xuezhi@mepfeco.org.cn  
chen.haijun@mepfeco.org.cn  
yan.wei@mepfeco.org.cn  
FUNBIOGEF@funbio.org.br  
agenciagef@funbio.org.br  
fabio.leite@funbio.org.br  
idb-gef@iadb.org  
michaelc@iadb.org  
ECDmailbox@ifad.org  
p.saintange@ifad.org  
m.astralaga@ifad.org  
s.mwanundu@ifad.org  
a.nazario@ifad.org  
IUCNGEF@iucn.org  
Cyriaque.Sendashonga@iucn.org  
Sebastien.Delahaye@iucn.org  
jean-yves.piro@iucn.org  
unepgef@unep.org  
brennan.vandyke@unep.org  
Kelly.West@unep.org  
gef@unido.org  
j.hierold@unido.org  
p.mikschofsky@unido.org  
undpgef@undp.org  
adriana.dinu@undp.org  
wbgefoperations@worldbank.org  
WWFGEF@wwfus.org  
David.McCauley@wwfus.org  
Herve.Lefeuvre@wwfus.org

**To be included in the Standard Distribution List as appropriate:**

*For Biodiversity Projects:*

secretariat@cbd.int  
yibin.xiang@cbd.int

*For Climate Change Projects:*

gefprojects@unfccc.int  
gefenabling.activities@unfccc.int

*For Land Degradation Projects:*

secretariat@unccd.int  
athust@unccd.int

*For Mercury Projects*

jacob.duer@unep.org  
shelia.logan@unep.org

*For POPs Projects:*

ta@brsmeas.org  
maria.cardenas@brsmeas.org  
frank.moser@brsmeas.org