



PROGRAM MANAGEMENT

November 21st, 2016 - November 25th, 2016

A weekly update on the GEF Program Management

Calendar

- Council Meeting Schedules
- GEFOP Meeting Schedules

Projects

- GEF Project Concepts, Proposals, Draft Documents Received
- Project Clearances, Approvals, Endorsements and Other Comments

Contacts

- GEF Secretariat Staff
- GEF Agencies
- GEF Trustee Convention Secretariats

Communications

- Introducing new staff to the GEFSEC
- Announcements

SCHEDULE OF FORTHCOMING GEF COUNCIL MEETINGS

Meetings/Consultations	May 2017
GEF Council Consultations with Civil Society	May 22
GEF Council Meeting	May 23 - 25
LDCF/SCCF Council Meeting	May 25
STAP Panel Meetings	

GEF Work Program Calendar for 2017

Events	May CWP
Receipt deadline for PIF/PFD	March 3
GEF GPU Technical Clearance Deadline	March 31
GEF PPO Clearance Deadline	April 7
CEO WP Approval	April 14
Draft Cover Note to Agencies, ConvSec, STAP	April 18
Inter-Agency Meeting with ConvSec, STAP	April 20
Posting of Work Program	April 25
Council Meeting	May 23-25
Council Approval	May 25

✚ Kindly see below the link to the Compilation of Council Comments for the October 2016 Work Program.

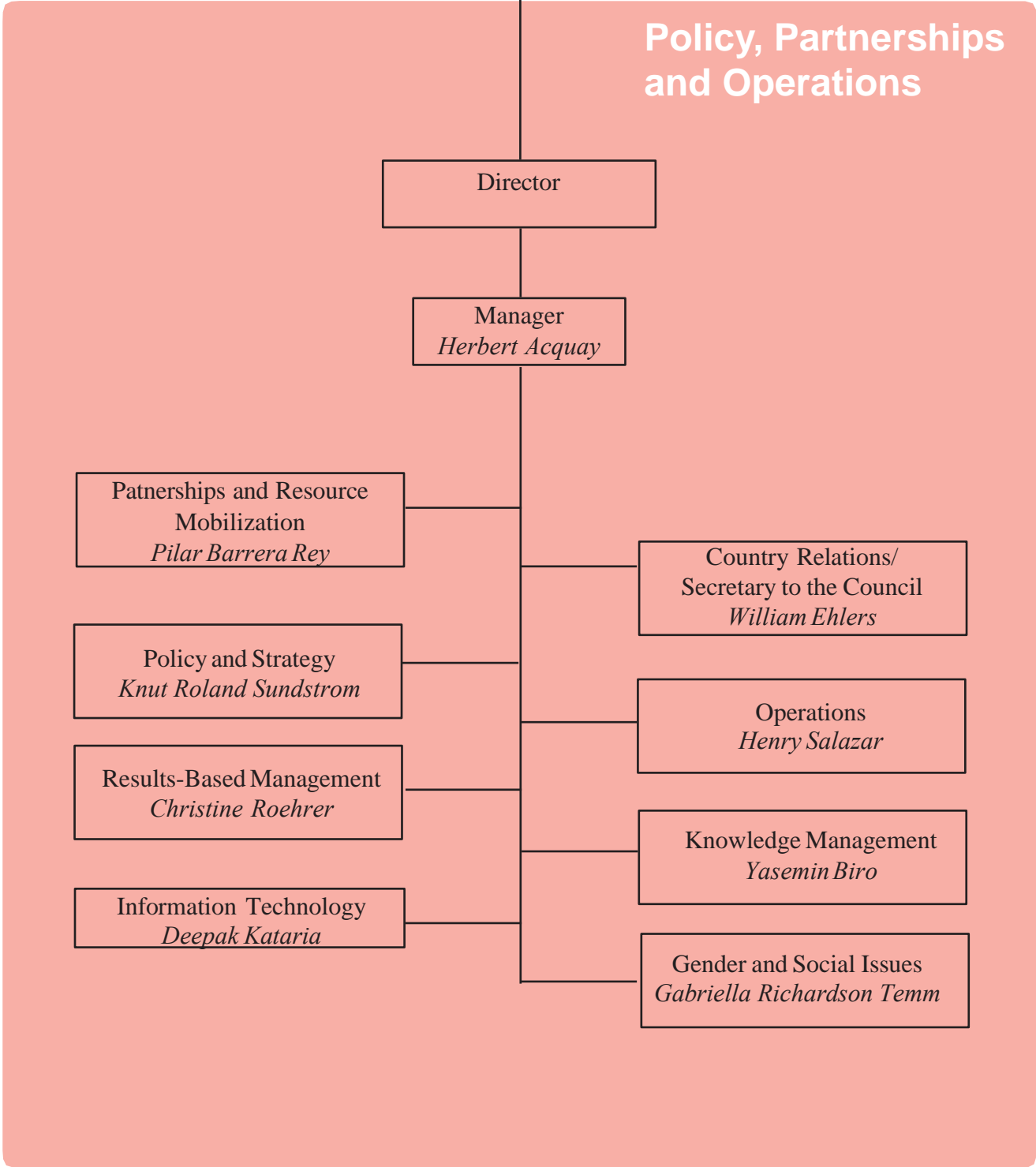
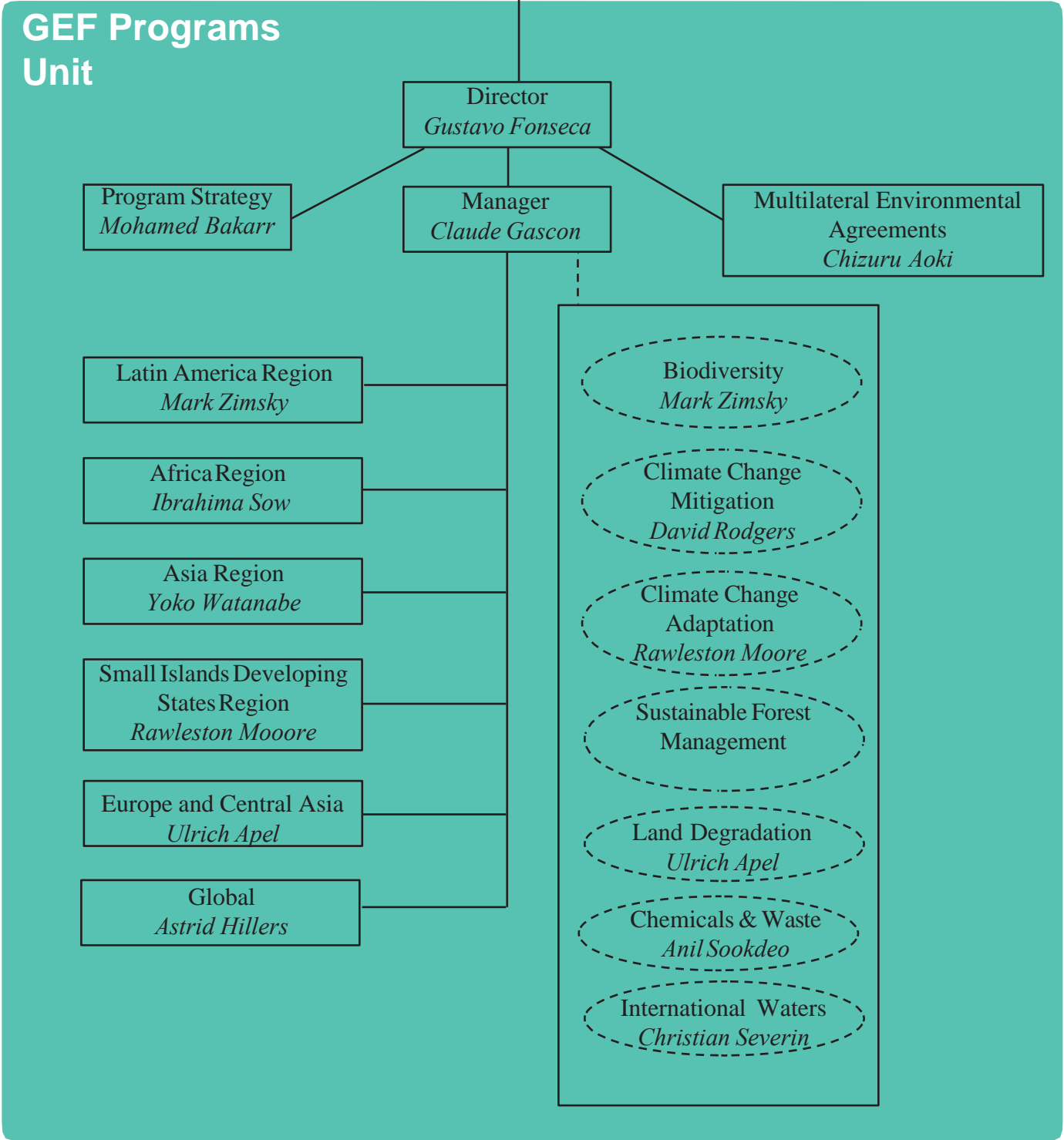
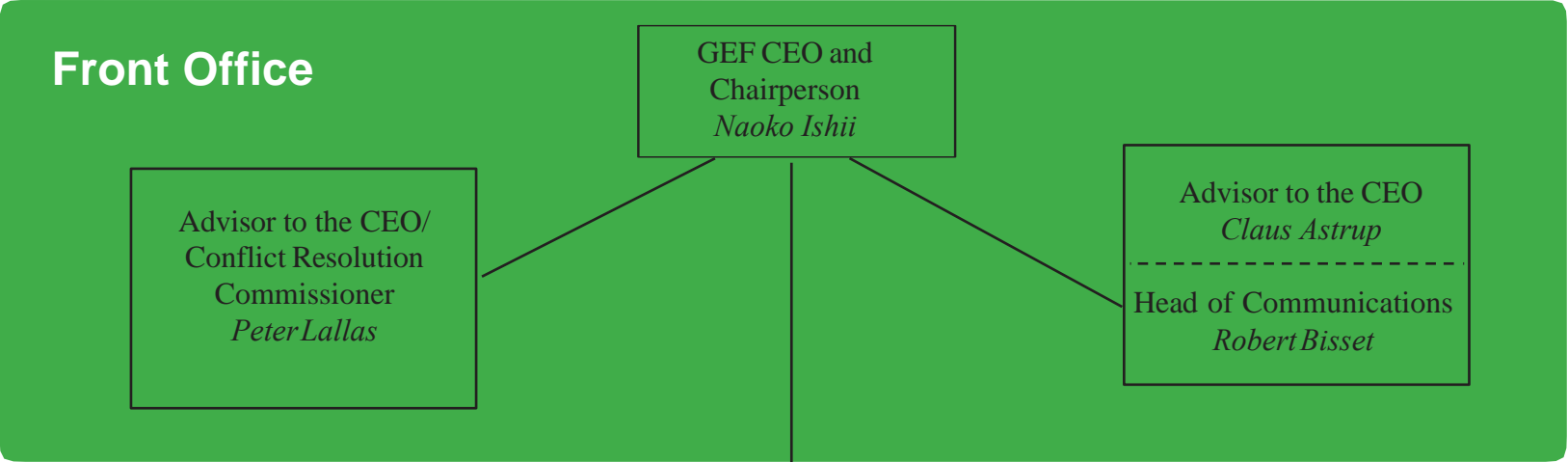
<https://www.thegef.org/work-programs>

<https://www.thegef.org/work-program-documents/compilation-council-comments- october-2016-gef-work-program>

Fiscal Year '16
Country Support Program Activities
Expanded Constituency Workshops

Constituency Meetings

Introduction Seminar
November 30 - December 2
Washington, DC



Naoko Ishii
Chief Executive Officer and Chairperson
nishii@thegef.org

FRONT OFFICE

Peter Lallas

Advisor to the Chief Executive Officer
plallas@thegef.org
+1 202 473 9732

Amornrat Ning Poopech

Resource Management Officer
apoopech@thegef.org
+1 202 458 4366

Esther Pormes

Senior Executive Assistant
epormes@thegef.org
+1 202 473 8736

Claus Pram Astrup

Advisor to the Chief Executive Officer
castrup@worldbank.org
+ 1 202 478 7270

Julienne Kouame

Program Analyst
jkouame@thegef.org
+1 202 473 8736

Diego Riano Posada

Special Assistant
drianoposada@thegef.org
+1 202 473 1444

Communications

Robert Bisset

Head of Communications
rbisset@thegef.org
+1 202 458 5191

Patrizia Cocca

Communications Officer and KM Coordinator
pcocca@thegef.org
+1 202 458 0234

Alua Satybaldina-Kennedy

Communications Consultant
asatybaldina@worldbank.org

Christian Hofer

Senior Communications Officer
chofer@thegef.org
+1 202 458 0936

Camila Perez Gabilondo

Communications Associate
cperez@thegef.org
+1 202 458 0895

Mailing Address:

GEF Secretariat

1818 H Street, NW, MSN N8-800
Washington, D.C. 20433
+1 202 473 0508; Fax: +1 202 522 3240/3245

POLICY AND OPERATIONS

Akila Nazneen
Financial Assistant
anazneen@thegef.org
+1 202 473 1760

Christina Bogyo
Senior Program Assistant
cbogyo@thegef.org
+1 202 473 6974

Deepak Kataria
Coordinator - Information Technology
dkataria@thegef.org
+1 202 473 3881

Henry Salazar
Coordinator - Operations
hsalazar@thegef.org
+1 202 473 8226

Juman Byun
Business Solutions Officer
jbyun@thegef.org
+1 202 458 7987

Lesly Rigaud
Client Technologies Officer
lrigaud@thegef.org
+1 202 473 3881

Naiying Peng
Operations Analyst
npeng@thegef.org
+1 202 458 9580

Olha Krushelnytska
Operations Officer
okrushelnytska@thegef.org
+1 202 458 5839

Amanda Adams
Program Assistant
aadams@thegef.org
+1 202 473 9878

Christine Roehrer
Coordinator –Lead Results Based Management
croehrer@worldbank.org
+1 202 473-0337

Gabriella Richardson-Temm
Coordinator – Gender and Social Issues
grichardsontemm@thegef.org

Herbert Acquay
Manager - Policy, Partnerships and Operations
hacquay@worldbank.org
+1 202 473 1043

Knut Roland Sundstrom
Coordinator - Policy and Strategy
ksundstrom@thegef.org
+1 202 473 7510

Minna Maria Kononen
Country Relations Officer
nkononen@thegef.org
+1 202 473 9402

Nicolas Alejandro Marquez Pizzanelli
Operations Analyst
nmarquez@thegef.org
+1 202 473 9522

Olivier Besson
Program Assistant
obesson@thegef.org
+1 202 473-8935

Omid Parhizkar
Operations Officer
oparhizkar@thegef.org
+1 202 458 2186

Pilar Barrera
Coordinator - Partnerships and
Resource Mobilization
pbarrera@thegef.org
+1 202 458 9891

Raul Rodriguez
Temporary
rrodriguez@thegef.org

Regine Mpoyi
Program Assistant
rmpoyi@thegef.org
+1 202 473 2754

Seo-Jeong Yoon
Policy Officer
syoon@thegef.org
+1 202 473 7832

Susan Waithaka
Country Relations Officer
swaithaka1@thegef.org
+1 202 473 5457

William Ehlers
Coordinator – Country Relations/
Secretary to the Concl
wehlers@thegef.org
+1 202 458 9436

Oreste Maia Andrade
Operations Analyst
omaiaandradejr@thegef.org
+1 202 458 9387

Quynh Xuan Thi Phan
Financial Officer
qphan1@worldbank.org
+1 202 458 4760

Ramon Prudencio C de Mesa
Operations Officer
rmesa@thegef.org
+1 202 458 9285

Robert Schreiber
Program Coordinator
rschreiber@thegef.org
+1 202 458 0288

Sonja Sabita Teelucksingh
Environmental Specialist
steelucksingh@thegef.org
+1 202 458 4004

Thomas Biegel
Consultant
tbiegel@thegef.org
+1 202 473 9252

Yasemin Biro
Coordinator - Knowledge Management
ybiro@thegef.org
+1 202 473 1550

PROGRAMS

Gustavo Fonseca

Director

gfonseca@thegef.org

+ 1 202 458 4818

Anil Bruce Sookdeo

Chemicals and Waste Focal Area Coordinator

asookdeo@thegef.org

+1 202 458 0683

Astrid Hillers

Senior Environmental Specialist

ahillers@thegef.org

+1 202 458 8173

Christian Severin

International Waters Focal Area Coordinator

cseverin@thegef.org

+1 202 458 2001

Cyrille Barnerias

Senior Environment Specialist

cbarnerias@thegef.org

+1 202 473 8871

Diana Movius

Consultant

dmovius@thegef.org

+1 202 473 4346

Evelyn Swain

Environment Specialist

eswain@thegef.org

+1 202 473 1151

Flavius Mihaies

Consultant, Climate and Chemicals

fmihaies@thegef.org

+1 202 560 4934

Ibrahima Sow

Africa Regional Coordinator

isow@thegef.org

+1 202 473 2716

Asha Imani Bobb Semple

Operations Analyst

abobbsemple@thegef.org

+1 202 473 989

Chizuru Aoki

Lead Environmental Specialist -

Multilateral Environmental Agreements

caoki@thegef.org

+1 202 473 6068

Claude Gascon

Lead Program Manager

cgascon@thegef.org

+1 202 458 9755

David Rodgers

Climate Change Mitigation Focal Area
Coordinator

drodgers@thegef.org

+1 202 458 9869

Dustin Schinn

Operations Analyst

dschinn@thegef.org

+1 202 458 1234

Fareeha Iqbal

Senior Climate Change Specialist

fiqball@thegef.org

+1 202 458 9593

Glynis Barber

Program Assistant

gbarber@thegef.org

+1 202 473 9647

Jaime Cavelier

Senior Biodiversity Specialist

jcavelier@thegef.org

+1 202 473 4886

Jean-Marc Sinnassamy
Senior Environmental Specialist
jsinnassamy@thegef.org
+1 202 478 8060

Kathryn Cherrie
Senior Program Assistant
kcherrie@thegef.org
+1 202 458 1460

Kettly Denis
Program Assistant
kdenis@thegef.org
+1 202 473 0825

Leah Karrer
Senior Environmental Specialist
lkarrer@thegef.org
+1 202 473 8364

Lulwa Ali
Senior Environmental Specialist
lali1@thegef.org
+1 202 473 5618

Mark Zimsky
Latin America Regional Coordinator/ Biodiversity
Focal Area Coordinator
mzimsky@thegef.org
+1 202 473 7855

Masako Ogawa
Senior Environment Specialist
mogawa2@thegef.org
+1 202 458 2789

Milena Gonzalez Vasquez
Junior Professional Associate
mgonzalezvasquez@thegef.org
+1 202 458 1284

Ming Yang
Senior Climate Change Specialist
myang@thegef.org
+1 202 473 5707

Mohamed Imam Bakarr
Lead Environmental Specialist - Program Strategy
mbakarr@thegef.org
+1 202 458 8890

Monica Fernandes
Senior Program Assistant
mfernandes@thegef.org
+1 202 473 9647

Nhu Quynh Phan
Program Assistant
nphan@thegef.org
+1 202 473 4236

Nicole Glineur
Senior Environmental Specialist
nglineur@thegef.org
+1 202 473 2512

Pascal Martinez
Senior Climate Change Specialist
pmartinez2@thegef.org
+1 202 458-9755

Paul Hartman
Senior Environmental Specialist
phartman@thegef.org

Rawlestone Moore
SIDS Regional Coordinator/ Climate Change
Adaptation Focal Area Coordinator
rmoore1@thegef.org
+ 1 202 473 8231

Saliha Dobardzic
Senior Climate Change Specialist
sdobardzic@thegef.org
+1 202 473 5943

Shakil Kayani
Program Assistant
skayani@thegef.org
+1 202 458 4680

Sarah Wyatt
Operations Analyst
swyatt@thegef.org
+1 202 473 0534

Steffen Hansen
Junior Professional Officer
shansen@thegef.org
+1 202 458 8796

Tigest Tirfe
Program Assistant
ttirfe@thegef.org
+1 202 458 9297

Ulrich Apel
Europe and Central Asia Regional Coordinator/ Land
Degradation Focal Area Coordinator
uapel@thegef.org
+1 202 473 2573

Xiaomei Tan
Climate Change Specialist
xtan1@thegef.org
+1 202 473 7448

Yoko Watanabe
Asia Regional Coordinator
ywatanabe@thegef.org
+1 202 473 9847

INDEPENDENT EVALUATION OFFICE

Juha Uitto

Director

GEF Independent Evaluation Office

juitto@thegef.org

Anupam Anand
Evaluations Officer
aanand2@thegef.org

Carlo Carugi
Senior Evaluations Officer
ccarugi@thegef.org
+1 202 473 8154

Anna Viggh
Senior Evaluations Officer
aviggh@worldbank.org
+1 202 4738896

Kseniya Temnenko
Knowledge Management Officer
ktemnenko@thegef.org
+1 202 458 4908

Jeneen Garcia
Evaluation Officer
jgarcia2@thegef.org
+1 202 458 2719

Francisco Grahammer
Information Analyst
fgrahammer@thegef.org
+1 202 473 4914

Ruben Sardon Martin
Consultant
rsardon@thegef.org
+1 202 473 1703

Kyoko Matsumoto
Senior Evaluation Officer
kmatsumoto@thegef.org
+1 202 473 2609

Marie-Constance Manuella Koukoui
Senior Executive Assistant
mkoukoui@thegef.org
+1 202 458 9682

Khondoker Tanveer Haider
Consultant
khaider@thegef.org

Neeraj Kumar Negi
Senior Evaluations Officer
nnegi1@thegef.org
+1 202 473 2259

Juan Portillo
Senior Operations Officer
jportillo@worldbank.org
+1 202 473 6056

Baljit Wadhwa
Senior Evaluations Officer
bwadhwa@worldbank.org
+1 202 473 0266

Dennis Bours
Evaluation Officer
sdbours@thegef.org
+1 202 458 9153

Malac Kabir
Research Assistant
mkabir4@thegef.org
+1 202 473 1808

Molly Watts
Evaluation Analyst
mwatts1@thegef.org
+1 202 473 3675

Sara El Choufi
Evaluation Analyst
selchoufi@thegef.org
+1 202 458 7069

Peixuan Zhou
Evaluation Analyst
pzhou2@thegef.org
+1 202 473 1703

Evelyn Chihuguyu
Program Assistant
echihuguyu@thegef.org
+1 202 473 0654

Laura Reynolds Nissley
Consultant
lnissley@thegef.org

ADAPTATION FUND BOARD SECRETARIAT

Mikko Antti Ollikainen
Senior Environmental Specialist
mollikainen@adaptation-fund.org
+1 202 458 8912

Silvia Mancini
Operations Officer
smancini@adaptation-fund.org

Aya Mimura
Operations Associate
amimura@adaptation-fund.org
+1 202 458 7347

Sophie Hans-Moevi
Senior Program Assistant
shansmoevi@adaptation-fund.org
+1 202 473 0701

Matthew Pueschel
Consultant
mpueschel@adaptation-fund.org
+1 202 473 6743

Anni Rein
Temporary
arein@adaptation-fund.org
+1 202 458 9758

Daouda Ben Oumar Ndiaye
Adaptation Officer
dndiaye@adaptation-fund.org
+1 202 473 4611

Young Hee Lee
Operations Analyst
ylee12@adaptation-fund.org
+1 202 473 8219

Farayi Onias Madziwa
Program Officer
fmadziwa@adaptation-fund.org
+1 202 458 5184

Hugo Remaury
Junior Professional Associate
hremaury@adaptation-fund.org
+1 202 473 5463

Alicia Marie Austin
Temporary
aaustin@adaptation-fund.org
+1 202 458 9758

GEF DIRECTORY OF ADDRESSEES

GEF Secretariat

GEF Secretariat¹
Program Coordination Registry
1818 H Street, NW
Washington, D.C. 20433, USA
gcoordination@thegef.org

"UUN: .S. Henry Salazar
Coordinator-0QFSBUJPOT
hsalazar@thegef.org
+1 202 473 8226

GEF Trustee

International Bank for Reconstruction and Development (The World Bank) Registry
1818 H Street, NW
Washington, D.C. 20433, USA
geftrustee@worldbank.org

Mr. Praveen Desabatla
Team Leader, DFPTF
pdesabatla@worldbank.org
+1 202 458 2099

Convention Secretariats

UN Convention on Biological Diversity (CBD)
413 rue Saint-Jacques, Suite 800
Montreal, Quebec, Canada H2Y 1 N9
Secretariat@cbd.int

Attn: Mr. Braulio F. de Souza Dias
Executive Secretary
GEF Contact Person: Mr. Yibin Xiang
Program Officer
Yibin.xiang@cbd.int
+1 514 288 2220

UN Framework on Climate Change Convention (UNFCCC)
Haus Carstanjen
Martin Luther King Strasse 8
53175 Bonn, Germany
secretariat@unfccc.int

Attn: Ms. Christiana Figueres
Executive Secretary
GEF Contact Person(s):
- *Ms. Deschen Tsering*
DTsering@unfccc.int
- *Mr. Alejandro Kilpatrick*
AKilpatrick@unfccc.int

gefenabling.activities@unfccc.int
gefprojects@unfccc.int

Secretariat of the Basel, Rotterdam and Stockholm Conventions
UNEP International Environment House 1
11-13 Chemin des Anemones
1219 Chatelaine, Geneva, Switzerland

Attn: Dr. Rolph Payet
Executive Secretary
Mr. Frank Moser
GEF Focal Point
Office of the Executive Secretary
frank.moser@brsmeas.org
+41 22 917 8951

¹ GEF Secretariat's physical address: 1899 Pennsylvania Avenue, NW, Washington, D.C. 20006

**UN Convention to Combat Desertification
(UNCCD)**

Herrmann-Ehlers Str. 10
D-53113 Bonn, Germany
secretariat@unccd.int

Attn: Ms. Monique Barbut
Executive Secretary

*GEF Contact Person: Ms. Anja Thust
Program Officer, FCMI Unit*

athust@unccd.int
+49 228 815 2828

Interim Secretariat of the Minamata Convention

International Environment House 1
13, chemin des Anémones
CH-1219 Chatelaine, Geneva
Switzerland

Mr. Jacob Duer
Coordinator, Minamata Convention
jacob.duer@unep.org
+41 22 917 82 17

STAP Panel and Secretariat

Panel

Rosina Bierbaum

Chairperson

rbierbau@umich.edu

+1 734 763 8675

Ralph E. Sims

Panel Member on Climate Change Mitigation

R.E.Sims@massey.ac.nz

+64 21 166 4555

Brian Child

Panel Member on Biodiversity

bchild@ufl.edu

+352 392 0494

Ricardo Barra

Panel Member on Chemicals & Waste

ricbarra@udec.cl

56-41-2204002

Annette Cowie

Panel Member on Land Degradation

annette.cowie@une.edu.au

+61 2 677 28080

Jakob Granit

Panel Member on International Waters

jakob.granit@sei-international.org

+46 73 707 8536

Anand Patwardhan

Panel Member on Adaptation

apat@umd.edu

+1 301 405 3413

Michael Stocking

Advisor to the STAP Chair

m.stocking@uea.ac.uk

+44 1603 592 339

Thomas E. Lovejoy

Advisor to the STAP Chair

tlovejoy@unfoundation.org

Secretariat

Thomas Hammond

STAP Secretary

thomas.hammond@unep.org

+1 202 974 1318

Guadalupe Duron

Programme Officer

guadalupe.duron@unep.org

+1 202 974 1313

Robin Burgess

Programme Assistant

robin.burgess@unep.org

+1 202 974 1311

Christine Wellington-Moore

Senior Programme Officer

christine.wellington-moore@unep.org

+1 202 974 1303

Lev Neretin

Senior Programme Officer

lev.neretin@unep.org

+1 202 621 5020

Sarah Lebel

Climate Adaptation and Resilience Specialist

sarah.lebel@unep.org

+1 202 621 5036

Virginia Gorsevski

Consultant

virginia.gorsevski@unep.org

+1 202 621 5039

GEF Agency Secretariats

African Development Bank (AfDB) Registry

Headquarters
01 BP 1387 Abidjan 01
Côte d'Ivoire
Gef_afdb@afdb.org

Mr. Mahamat Assouyouli
GEF Coordinator
m.assouyouli@afdb.org

Copy to:
Mr. Kurt Lonsway
Division Manager, Environment and Climate Change
k.lonsway@afdb.org

Asian Development Bank (ADB) Registry

6 ADB Avenue
Mandaluyong City 1550
Metro Manila, Philippines
adbgef@adb.org

Attn: Mr. Nessim Ahmad
Deputy Director General, Sustainable Development and Climate Change Development and GEF Official Focal Point
njahmad@adb.org

Copy to:
Mr. Bruce Dunn
Principal Environment Specialist, Environment and Safeguards and ADB/GEF Coordinator
bdunn@adb.org
+632 683 1922/ +632 683 1923

European Bank for Reconstruction and Development (EBRD) Registry

One Exchange Square
London EC2A 2JN, United Kingdom
ebrdgef@ebrd.com

Attn: Ms. Marta Simonetti
Senior Manager
(Multilateral Funds – Climate and Environment)
EBRD GEF Executive Coordinator
Donor Co-Financing – VP Policy
simonetm@ebrd.com
+ 0044 (0) 207338 7259
+ 0044 (0) 7921 039815

United Nations Food and Agriculture Organization (FAO) Registry

Viale Dell Terme di Caracalla
00153 Rome, Italy
GEF-Coordination-Unit@fao.org

Attn: Mr. Gustavo Merino
Director, Investment Centre Division
TCI-Director@fao.org
faogef@fao.org
+3906 570 54477

Copy to:
Mr. Jeffrey Griffin
Senior Coordinator - GEF
Investment Center Division
Jeffrey.Griffin@fao.org
+3906 570 55680

GEF Agency Secretariats cont'd

**Inter-American Development Bank
(IDB) Registry**

1300 New York Avenue, NW
Washington, D.C. 20577, USA
idb-gef@iadb.org

Mr. Michael Collins
GEF Coordinator
michaelc@iadb.org
+ 1 202 623 2158

**International Bank for Reconstruction and
Development (The World Bank) Registry**

1818 H Street, NW Washington,
D.C. 20433, USA
wbgefoperations@worldbank.org

Ms. Karin Shepardson
GEF Executive Coordinator
kshepardson@worldbank.org
+ 1 202 458 1398

Copy to:
Dominique Isabelle Kayser
dkayser@worldbank.org

**International Fund for Agricultural
Development (IFAD) Registry**

Via Paolo di Dono, 44
00142 Rome, Italy
ECDmailbox@ifad.org

Mr. Perin Saint-Ange
Associate Vice President,
Programme Management Department
p.saintange@ifad.org
+39 06 5459 2448

Copy to:
Ms. Margarita Astrálaga
Director, Environment and Climate Division
m.astralaga@ifad.org
Tel: +39 06 5459 2151

Ms. Sheila Mwanundu
GEF Coordinator
s.mwanundu@ifad.org
Tel: +39 06 5459 2031

Ms. Aisha Nazario
a.nazario@ifad.org
Tel: +39 06 5459 2459

Ms. Estibalitz Morras
e.morras@ifad.org
Tel: +39 06 5459 2438

**United Nations Environment Programme
(UNEP) Registry**

United Nations Avenue
Gigiri, PO Box 30552
00100 Nairobi, Ken ya
Unepgef@unep.org

Local Office:
900 17th Street, NW
Suite 506, Washington, D.C. 20006

Ms. Brennan VanDyke
GEF Executive Coordinator
Deputy Director, Office for Operations
brennan.vandyke@unep.org
Tel: (917) 367-2114

Copy to:
Ms. Kelly West
Senior GEF Portfolio Manager
Office for Operations
Kelly.West@unep.org

GEF Agency Secretariats cont'd

United Nations Industrial Development Organization (UNIDO) Registry
Vienna International Centre
PO Box 300
A-1400 Vienna, Austria
gef@unido.org

Mr. Juergen Hierold
GEF Coordinator
J.Hierold@unido.org
+43 1 26026 4565

Copy to:
Ms. Pamela Mikschofsky
p.mikschofsky@unido.org

United Nations Development Programme (UNDP) Registry
304 East 45th Street
New York, NY 10017, USA
undpgef@undp.org

Attn: Ms. Adriana Dinu
GEF Executive Coordinator
Adriana.dinu@undp.org
+1 212 906 5143

GEF Project Agency Secretariats

Corporación Andina de Fomento (CAF)
380 Enrique Canaval Moreyra Ave., 13th Floor,
San Isidro, Lima
Lima 27, Peru
CAFGEF@caf.com

Attn: René Gómez García Palao
Senior Executive
rgomezgarcia@caf.com
+511-710-8530

Copy to:
Ms. Ligia Castro de Doens,
Director
Environment
lcastro@caf.org

Conservation International (CI)
2011 Crystal Drive, Suite 500
Arlington VA, 22202
USA
CIGEF@conservation.org

Attn: Mr. Miguel Morales
Vice President/ Managing Director
CI-GEF Project Agency
mamorales@conservation.org

Copy to:
osamaroo@conservation.org

GEF Project Agency Secretariats cont'd

**Development Bank of Southern Africa
(DBSA)**

1258 Lever Road, Headway Hill
Midrand, 1685
South Africa
DBSAGEF@dbsa.org

Attn: Ms. Nomsa T. Zondi
GEF Coordinator
nomsaz@dbsa.org
+27 11 313 3491

**Foreign Economic Cooperation Office
(FECO)**

Ministry of Environmental Protection
ECO Building
No.5 Houyingfang Hutong
Xicheng District, Beijing 100035, China
FECOGEF@mepfeco.org.cn

Attn: Mr. Xiao Xuezhi
Deputy Director General
xiao.xuezhi@mepfeco.org.cn
+ 86-10-82268807

Copy to:
Ms. Chen Haijun
Director,
chen.haijun@mepfeco.org.cn
+ 86-10-82268846

Ms. Yan Wei
Senior Project Manager
yan.wei@mepfeco.org.cn
+ 86-10-82268848

**International Union for Conservation of
Nature (IUCN)**

Rue Mauverney, 28
CH-1196 Gland,
Switzerland
IUCNGEF@iucn.org

Attn: Cyrie Sendashonga
Global Director, Policy and Programme
Cyriaque.Sendashonga@iucn.org
+41 22 999 03 17

Copy to:
Mr. Jean-Yves Pirot,
Head, GEF Coordination Unit
jean-yves.pirot@iucn.org
+41 22 999 02 56

Mr. Sébastien Delahaye
Portfolio Manager
GEF Coordination Unit
Sebastien.Delahaye@iucn.org
+41 22 999 02 51

GEF Project Agency Secretariats cont'd

World Wildlife Fund, Inc. (WWF-US)

1250 24th St, NW
Washington, DC 20037-1193
WWFGEF@wwfus.org

Attn: Dr. David S. McCauley
Senior Vice President
Policy and Government Affairs
david.mccauley@wwfus.org
+1-202-495-4159

Copy to:
Mr. Hervé Lefeuve
Senior Director, GEF Relations and
GEF Coordinator
Herve.Lefeuve@wwfus.org
+1-202-459-8533

**Fundo Brasileiro para a Biodiversidade
(FUNBIO)**

Rua Voluntários da Pátria, 286 5º andar
Botafogo, Rio de Janeiro, RJ
22270-014
funbiogef@funbio.org.br

Attn: Fabio Heuseler Ferreira Leite
GEF Coordinator
fabio.leite@funbio.org.br
+ 55 21 2123-5326

Copy to:
agenciageg@funbio.org.br

**DISTRIBUTION LIST WHEN SUBMITTING PROJECT PROPOSALS
FOR GEF CEO APPROVAL/ENDORSEMENT**

As a rule, all GEF Agencies are expected to circulate their project proposals to the GEF Secretariat, GEF Agencies, and STAP and to the relevant Convention Secretariat.

Standard Distribution List for all projects (PIF, PPG, FSP, MSP, and EA):

gcoordination@thegef.org
STAP.Secretariat@unep.org
thomas.hammond@unep.org
adbgef@adb.org
bdunn@adb.org
njahmad@adb.org
gef_afdb@afdb.org
m.assouyouti@afdb.org
k.lonsway@afdb.org
ambengue@boad.org
dtoe@boad.org
itraore@boad.org
straore@boad.org
ytoure@boad.org
CAFGEF@caf.com
rgomezgarcia@caf.com
lcastro@caf.org
CIGEF@conservation.org
lspijkerman@conservation.org
osamaroo@conservation.org
DBSAGEF@dbsa.org
nomsaz@dbsa.org
ebrdgef@ebrd.com
simonetm@ebrd.com
GEF-Coordination-Unit@fao.org
faogef@fao.org
TCI-Director@fao.org
Jeffrey.Griffin@fao.org
FECOGEF@mepfeco.org.cn
xiao.xuezhi@mepfeco.org.cn
chen.haijun@mepfeco.org.cn
yan.wei@mepfeco.org.cn
FUNBIOGEF@funbio.org.br
agenciagef@funbio.org.br
fabio.leite@funbio.org.br
idb-gef@iadb.org
michaelc@iadb.org
ECDmailbox@ifad.org
p.saintange@ifad.org
m.astralaga@ifad.org
s.mwanundu@ifad.org
a.nazario@ifad.org
IUCNGEF@iucn.org
Cyriaque.Sendashonga@iucn.org
Sebastien.Delahaye@iucn.org
jean-yves.piro@iucn.org
unepgef@unep.org
brennan.vandyke@unep.org
Kelly.West@unep.org
gef@unido.org
j.hierold@unido.org
p.mikschofsky@unido.org
undpgef@undp.org
adriana.dinu@undp.org
wbgefoperations@worldbank.org
WWFGEF@wwfus.org
David.McCauley@wwfus.org
Herve.Lefeuvre@wwfus.org

To be included in the Standard Distribution List as appropriate:

For Biodiversity Projects:

secretariat@cbd.int
yibin.xiang@cbd.int

For Climate Change Projects:

gefprojects@unfccc.int
gefenabling.activities@unfccc.int

For Land Degradation Projects:

secretariat@unccd.int
athust@unccd.int

For Mercury Projects

jacob.duer@unep.org
shelia.logan@unep.org

For POPs Projects:

ta@brsmeas.org
maria.cardenas@brsmeas.org
frank.moser@brsmeas.org