



# PROGRAM MANAGEMENT

**January 18<sup>th</sup>, 2016 - January 22<sup>nd</sup>, 2016**

A weekly update on the GEF Program Management

## Calendar

- Council Meeting Schedules
- GEFOP Meeting Schedules

## Projects

- GEF Project Concepts, Proposals, Draft Documents Received
- Project Clearances, Approvals, Endorsements and Other Comments

## Contacts

- GEF Secretariat Staff
- GEF Agencies
- GEF Trustee Convention Secretariats

## Communications

- Introducing new staff to the GEFSEC
- Announcements

## SCHEDULE OF FORTHCOMING GEF COUNCIL MEETINGS

Meetings/Consultations	Fall 2015	Spring 2016
GEF Council Consultations with Civil Society	Oct 19	June 6
GEF Council Meeting	Oct 20 -21	June 7 -9
LDCF/SCCF Council Meeting	Oct 21	June 9
GEFCSO Forum		
STAP Panel Meetings	Oct 19	June 6

### Intersessional Work Program for April 2016

Events	Date
Receipt deadline for PIF	11-Jan
GEF GPU Technical clearance deadline	8-Feb
GEF PPO clearance deadline	15-Feb
Constitution of WP (projects submitted to STAP)	22-Feb
CEO PIF clearances	22 - 26 Feb
Draft Cover Note to CEO	4-Mar
Draft Cover Note to Agencies, ConvSec, STAP	7-Mar
Inter-Agency Meeting with ConvSec, STAP	10-Mar
Posting of Work Program	14-Mar
Council Approval	12-Apr

## Fiscal Year '16

### Country Support Program Activities

#### Expanded Constituency Workshops

##### January 26-28

GEF Introduction Seminar

*World Bank J Building - J B1-080, Washington, DC*

##### February 16-19

**Expanded Constituency Workshop** - Angola, Botswana, Lesotho, Malawi, Mozambique, Namibia, South Africa, Swaziland, Zambia, and Zimbabwe (10)

*Gaborone, Botswana - Lansmore Masa Square Hotel*

##### March 1-4

**Expanded Constituency Workshop** - Antigua and Barbuda, Bahama, Barbados, Belize, Cuba, Dominica, Dominican Republic, Grenada, Guyana, Haiti, Jamaica, St. Kitts And Nevis, St. Lucia, St. Vincent and Grenadines, Suriname, and Trinidad and Tobago (17)

*Trinidad and Tobago - Venue TBD*

##### March 16-19

**Expanded Constituency Workshop** - Albania, Bulgaria, Bosnia-Herzegovina, Georgia, Macedonia, Moldova, Montenegro, Poland, Romania, Serbia and Ukraine (12)

*Becici, Montenegro - Hotel Splendid Conference Center*

##### April 5-8

**Expanded Constituency Workshop** - Cambodia, Lao PDR, Malaysia, Mongolia, Myanmar, Thailand, and Vietnam + Bangladesh, Bhutan, India, Maldives, Nepal, and Sri Lanka + China (15)

*Thailand - Venue TBD*

##### April 19-21

**Expanded Constituency Workshop** - Argentina, Bolivia, Chile, Paraguay, Peru, and Uruguay + Brazil, Colombia, and Ecuador (9)

*Argentina - Venue TBD*

##### May 3-6

**Expanded Constituency Workshop** - Burkina Faso, Cape Verde, Chad, Guinea-Bissau, Mali, Mauritania, Niger, Senegal, and The Gambia (9)

##### May 10-13

**Expanded Constituency Workshop** - Benin, Cote d'Ivoire, Ghana, Guinea, Liberia, Nigeria, Sierra Leone, and Togo (8)

##### May 24-27

**Expanded Constituency Workshop** - Costa Rica, El Salvador, Guatemala, Honduras, Mexico, Nicaragua, Panama, and Venezuela (8)

*Guatemala - Venue TBD*

##### June 28-30

**Expanded Constituency Workshop** - Azerbaijan, Kazakhstan, Kyrgyz Republic, Switzerland, Tajikistan, Turkmenistan, and Uzbekistan + Armenia, Belarus, and Russian Federation (10)

*Kazakhstan - Venue TBD*

##### July 19-22

**Expanded Constituency Workshop** - Comoros, Djibouti, Eritrea, Ethiopia, Kenya, Madagascar, Mauritius, Rwanda, Seychelles, Somalia, Southern Sudan, Sudan, Tanzania, and Uganda (14)

##### September 8-11

**Expanded Constituency Workshop** - Burundi, Cameroon, Central African Republic, Congo,

Congo DR, Equatorial Guinea, Gabon 2015, and Sao Tome and Principe (8))

**October 6-9**

**Expanded Constituency Workshop** - Cook Islands, Fiji, Indonesia, Kiribati, Marshall Islands, Micronesia, Nauru, Niue, Palau, Papua New Guinea, Philippines, Samoa, Solomon Islands, Timor Leste, Tonga, Tuvalu, and Vanuatu (17)

*Fiji - Venue TBD*

**November 1-4**

**Expanded Constituency Workshop** - Afghanistan, Jordan, Iraq, Lebanon, Pakistan, Syria, and Yemen + Algeria, Egypt, Libya, Morocco, and Tunisia + Iran, Turkey (14)

## Requests Received from GEF Agencies

January 18 - 22, 2016

GEF ID	IA ID	Type	Focal Area	Decision Sought	Proponent	Country	Project Title	Program Manager	Date Received
<b>FAO</b>									
5122		FP	Multi Focal Area	CEO endorsement of FSP	FAO	Solomon Islands	Integrated Forest Management in the Solomon Islands	Christian Severin	19-Jan-16
<b>UNDP</b>									
9375	5772	EA	Climate Change	CEO EA Approval	UNDP	Azerbaijan	Development of Azerbaijan's Fourth National Communication to the UNFCCC and Second Biennial Reporting	Rawleston Moore	14-Jan-16
9378		EA	Climate Change	CEO EA Approval	UNDP	Lebanon	Second Biennial Update Report	Rawleston Moore	15-Jan-16
9377	5830	EA	POPs	CEO EA Approval	UNDP	Cuba	Review and update of the national implementation plan for the Stockholm Convention on Persistent Organic Pollutants (POPs) in Cuba	Evelyn Swain	21-Jan-16
9379		FP	Chemicals and Waste	CEO PIF Clearance for WPI	UNDP	Vietnam	Application of Green Chemistry in Vietnam to support green growth and reduction in the use and release of POPs/harmful chemicals	Anil Sookdeo	21-Jan-16

<b>GEF ID</b>	<b>IA ID</b>	<b>Type</b>	<b>Focal Area</b>	<b>Decision Sought</b>	<b>Proponent</b>	<b>Country</b>	<b>Project Title</b>	<b>Program Manager</b>	<b>Date Received</b>
<b>UNEP</b>									
5825		MSP	Land Degradation	CEO MSP Approval	UNEP	Georgia	Applying Landscape and Sustainable Land Management (L-SLM) for Mitigating Land Degradation and Contributing to Poverty Reduction in Rural Areas	Ulrich Apel	15-Jan-16
5210		MSP	Biodiversity	CEO MSP Approval	UNEP	Cameroon	Sustainable Farming and Critical Habitat Conservation to Achieve Biodiversity Mainstreaming and Protected Areas Management Effectiveness in Western Cameroon SUFACHAC	Jean-Marc Sinnassamy	15-Jan-16
9329		MSP	Climate Change	CEO MSP Approval	UNEP	Global	Scaling up the SE4ALL Building Efficiency Accelerator (BEA)	David Elrie Rodgers	18-Jan-16
4668		FP	POPs	CEO endorsement of FSP	UNEP	Regional (Botswana, Mozambique, Namibia, Swaziland, South Africa, Zambia, Zimbabwe)	Demonstration of Effectiveness of Diversified, Environmentally Sound and Sustainable Interventions, and Strengthening National Capacity for Innovative Implementation of Integrated Vector Management (IVM) for Disease Prevention and Control in the WHO AFRO Region	Evelyn Swain	21-Jan-16

<b>GEF ID</b>	<b>IA ID</b>	<b>Type</b>	<b>Focal Area</b>	<b>Decision Sought</b>	<b>Proponent</b>	<b>Country</b>	<b>Project Title</b>	<b>Program Manager</b>	<b>Date Received</b>
<b><u>World Bank</u></b>									
6915	152230	FP	Climate Change	CEO endorsement of FSP	World Bank	Kazakhstan	Southeast Europe and Central Asia Catastrophe Risk Insurance Facility	Saliha Dobardzic	21-Dec-15
9356	158708	FP	Multi Focal Area	CEO PIF Clearance for WPI	World Bank	Congo DR	Sustainable Landscapes of South Kivu Province (part of the the Regional Great Lakes Integrated Agriculture Development Program)	Jean-Marc Sinnassamy	15-Jan-16
9376		FP	Climate Change	CEO PIF Clearance for WPI	World Bank	St. Lucia	Saint Lucia Geothermal Resource Exploration Project	Ogawa Masako	15-Jan-16

# Responses to Proponents

January 18 - 22, 2016

ID	IA ID	Type	Focal Area	Decision Sought	Proponen	Country	Project Title	Program Manage	Response Date	Remarks
<b><u>ADB</u></b>										
9063		FP	Multi Focal Area	CEO PIF Clearance for WPI	ADB	Regional (Asia/Pacific)	(NGI) Mezzanine Finance for Climate Change with Asia Climate Partners (ACP)	David Elrie Rodgers	19-Jan-16	PIF recommended for CEO clearance (Technically cleared)
<b><u>AfDB</u></b>										
5394		FP	Climate Change	CEO endorsement of FSP	AfDB	Zambia	Climate Resilient Livestock Management Project	Knut Sundstrom	14-Jan-16	FSP endorsed by CEO
<b><u>CI</u></b>										
9369		FP	Multi Focal Area	CEO PIF Clearance for WPI	CI	Ecuador	Implementation of the strategic plan of Ecuador's Mainland Marine and Coastal Protected Areas Network	Mark Zimsky	20-Jan-16	Review Sheet sent to Agency for PIF revision
9369		FP	Multi Focal Area	CEO PPG approval	CI	Ecuador	Implementation of the strategic plan of Ecuador's Mainland Marine and Coastal Protected Areas Network	Mark Zimsky	20-Jan-16	Review Sheet sent to Agency for PPG revision
<b><u>FAO</u></b>										
9153		FP	Multi Focal Area	CEO PIF Clearance for WPI	FAO	Uruguay	Climate-smart Livestock Production and Land Restoration in the Uruguayan Rangelands	Milena Vasquez	20-Jan-16	PIF recommended for CEO clearance



ID	IA ID	Type	Focal Area	Decision Sought	Proponen	Country	Project Title	Program Manage	Response Date	Remarks
9153		FP	Multi Focal Area	CEO PPG approval	FAO	Uruguay	Climate-smart Livestock Production and Land Restoration in the Uruguayan Rangelands	Milena Vasquez	20-Jan-16	PPG recommended for CEO approval
<b>IUCN</b>										
9232		FP	Multi Focal Area	CEO PIF Clearance for WPI	IUCN	Regional (Cambodia, Lao PDR, Myanmar)	Sustainable Management of Peatland Ecosystems in Mekong Countries	Yoko Watanabe	20-Jan-16	PIF recommended for CEO clearance (Technically cleared)
<b>UNDP</b>										
9319	572MSP		Multi Focal Area	CEO PIF Approval	UNDP	Cuba	Integrating Rio Global Environmental Commitments into National Priorities and Needs through the Improvement of Information Management and Knowledge for Planning and Decision Making.	Susan Waithaka	7-Jan-16	PIF approved by CEO
9319	572MSP		Multi Focal Area	CEO PPG approval	UNDP	Cuba	Integrating Rio Global Environmental Commitments into National Priorities and Needs through the Improvement of Information Management and Knowledge for Planning and Decision Making.	Susan Waithaka	7-Jan-16	PPG approved by CEO
5424	468MSP		Climate Change	CEO MSP Approval	UNDP	Congo	Small Hydropower-based Mini-grids for Rural Electrification	Ming Yang	13-Jan-16	MSP approved by CEO

ID	IA ID	Type	Focal Area	Decision Sought	Proponen	Country	Project Title	Program Manage	Response Date	Remarks
5673	5324	FP	Climate Change	CEO endorsement of FSP	UNDP	Sudan	Promoting the Use of Electric Water Pumps for Irrigation	Ming Yang	14-Jan-16	FSP endorsed by CEO
9289	5602	MSP	Biodiversity	CEO MSP Approval	UNDP	Albania	Enhancing Financial Sustainability of the Protected Area System	Saliha Dobardzic	14-Jan-16	MSP approved by CEO
5533	5310	FP	Biodiversity	CEO endorsement of FSP	UNDP	China	Developing and Implementing the National Framework on Access to and Benefit Sharing of Genetic Resources and Associated Traditional Knowledge	Yoko Watanabe	14-Jan-16	FSP circulated to Council before CEO endorsement
9319	572	MSP	Multi Focal Area	CEO PIF Approval	UNDP	Cuba	Integrating Rio Global Environmental Commitments into National Priorities and Needs through the Improvement of Information Management and Knowledge for Planning and Decision Making.	Susan Waithaka	19-Jan-16	PIF approved by CEO (PIF and PPG letter sent to Agency, dated Jan 7 but signed on Jan 19)
9335	564	MSP	Multi Focal Area	CEO PIF Approval	UNDP	Uganda	Strengthening Institutional Capacity for Effective Implementation of Rio Conventions in Uganda	Susan Waithaka	20-Jan-16	PIF approved by CEO
9335	564	MSP	Multi Focal Area	CEO PPG approval	UNDP	Uganda	Strengthening Institutional Capacity for Effective Implementation of Rio Conventions in Uganda	Susan Waithaka	20-Jan-16	PPG approved by CEO
5271	4754	FP	International Waters	CEO endorsement of FSP	UNDP	Global (Costa Rica, Ecuador, Indonesia, Philippines)	Global Sustainable Supply Chains for Marine Commodities	Leah Karrer	21-Jan-16	FSP endorsed by CEO

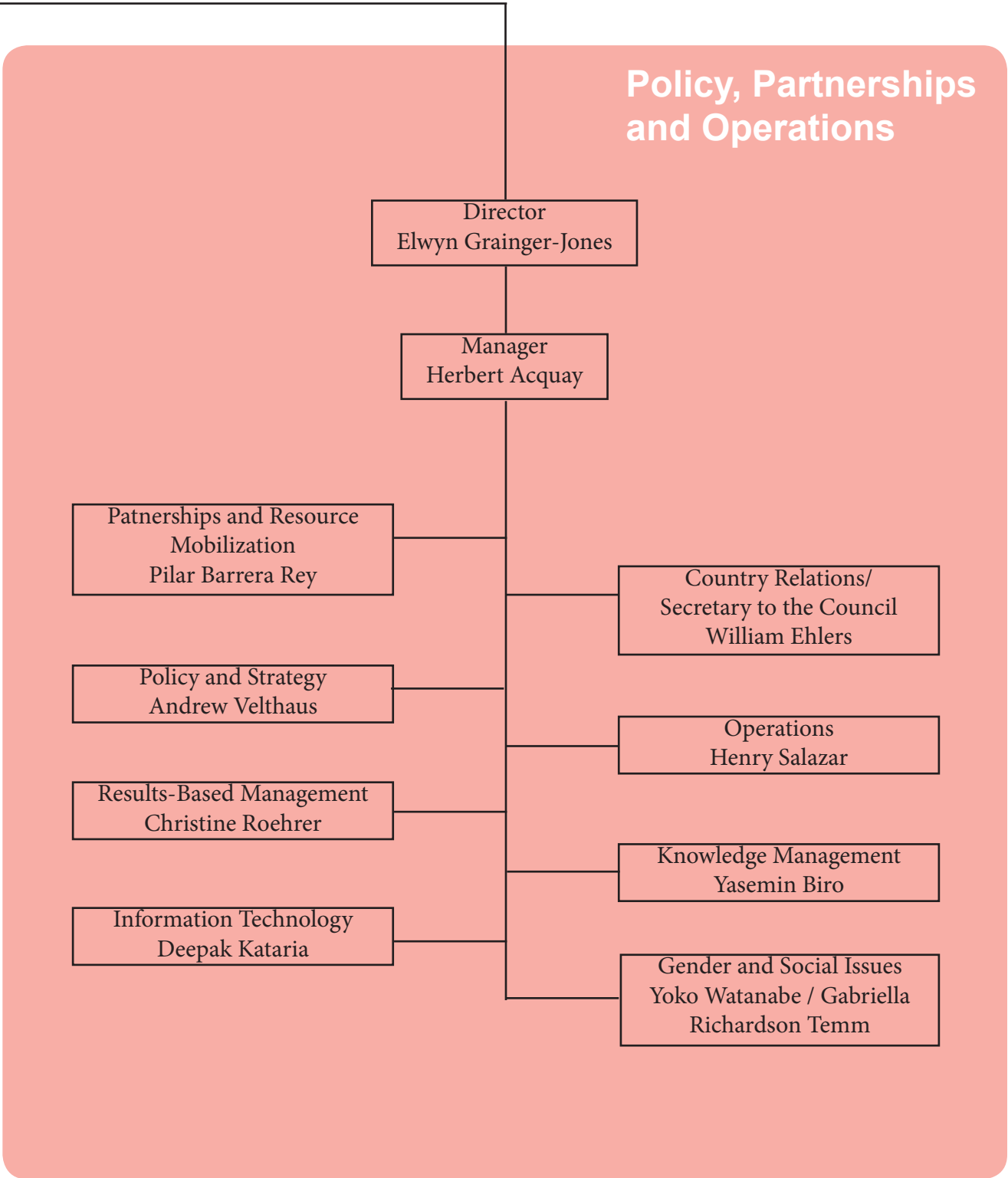
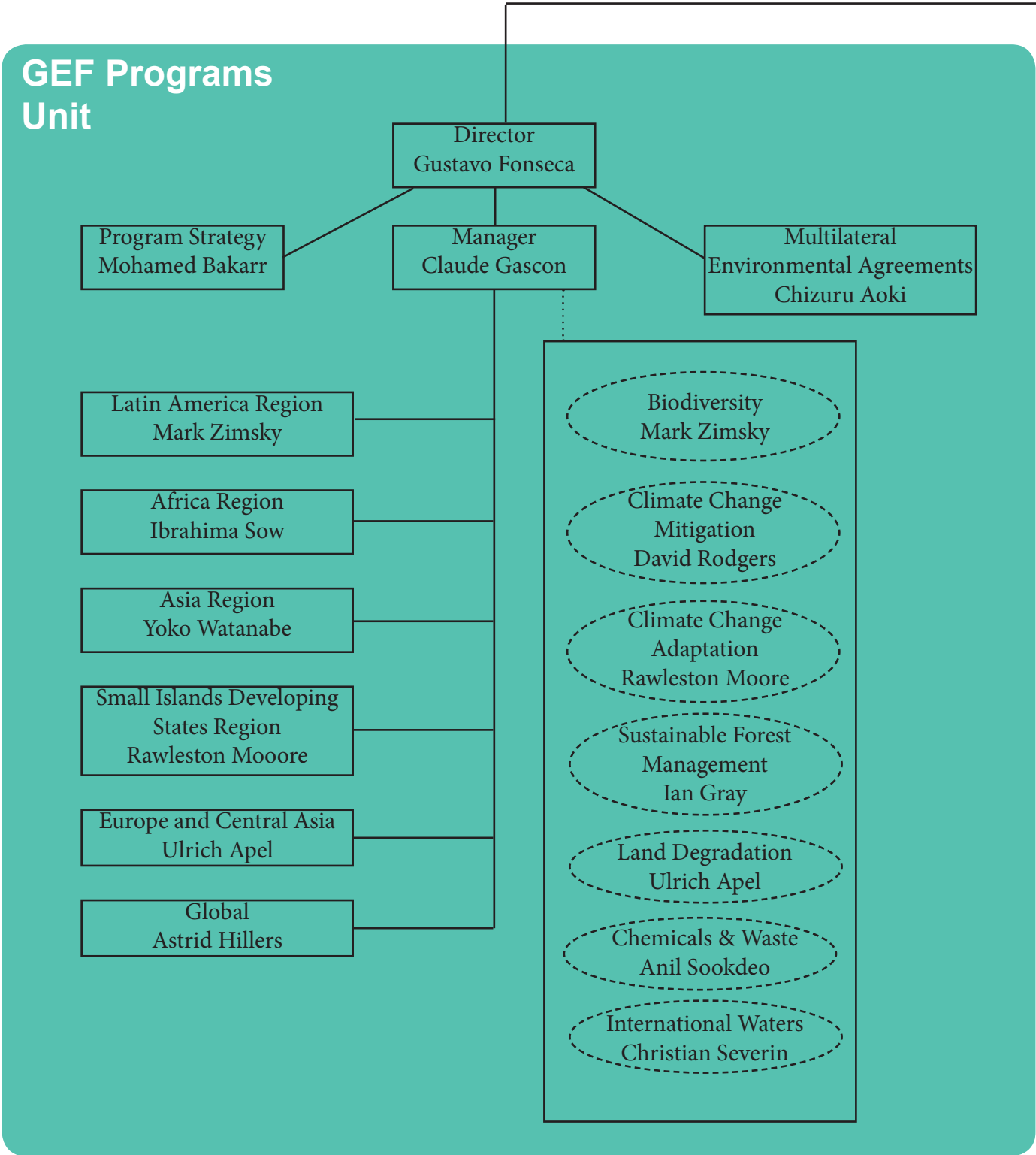
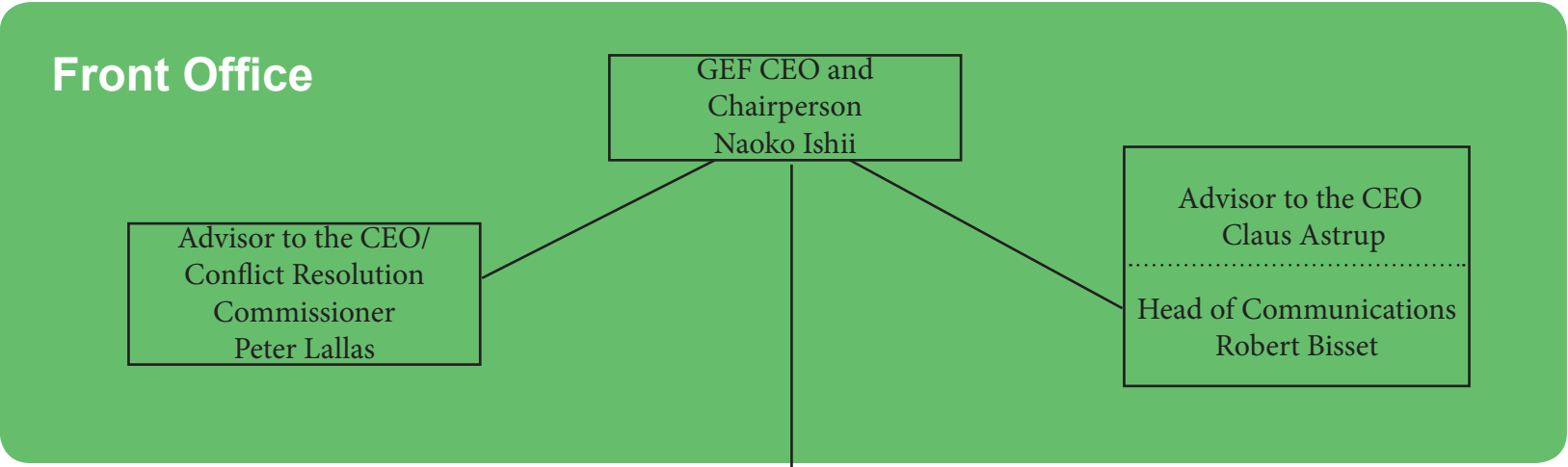
ID	IA ID	Type	Focal Area	Decision Sought	Proponen	Country	Project Title	Program Manage	Response Date	Remarks
9335	5643	MSP	Multi Focal Area	CEO PIF Approval	UNDP	Uganda	Strengthening Institutional Capacity for Effective Implementation of Rio Conventions in Uganda	Susan Waithaka	21-Jan-16	PIF approved by CEO (PIF aand PPG Approval letter sent to Agency)
<b>UNEP</b>										
5882		MSP	Biodiversity	CEO MSP Approval	UNEP	Gabon	Gabon - Implementation of National Strategy and Action Plan on Access to Genetic Resources and The Fair and Equitable Sharing of Benefits Accruing From Their	Jaime Cavelier	14-Jan-16	MSP approved by CEO
9286		FP	Climate Change	CEO PIF Clearance for WPI	UNEP	Regional (Burkina Faso, Cote d'Ivoire, Ethiopia, Ghana, Kenya, Liberia, Nigeria, Rwanda, Sierra Leone, Senegal, Tanzania, Uganda)	(NGI) Renewable Energy Performance Platform for Sub-Saharan Africa (SSA)	David Elrie Rodgers	20-Jan-16	PIF not recommended for further development
9312		MSP	Climate Change	CEO MSP Approval	UNEP	Global	Global Rollout of the Global Fuel Economy Initiative (GFEL)	Xiaomei Tan	20-Jan-16	MSP not recommended for CEO approval
5137		FP	Biodiversity	CEO endorsement of FSP	UNEP	India	Mainstreaming Agrobiodiversity Conservation and Utilization in Agricultural Sector to Ensure Ecosystem Services and Reduce Vulnerability	Yoko Watanabe	20-Jan-16	FSP endorsed by CEO

**UNIDO**

<b>ID</b>	<b>IA ID</b>	<b>Type</b>	<b>Focal Area</b>	<b>Decision Sought</b>	<b>Proponen</b>	<b>Country</b>	<b>Project Title</b>	<b>Program Manage</b>	<b>Response Date</b>	<b>Remarks</b>
5704		FP	Climate Change	CEO endorsement of FSP	UNIDO	South Africa	Promoting Organic Waste-to-Energy and other Low-carbon Technologies in Small and Medium-scale Enterprises (SMMEs): Accelerating Biogas Market Development	Ming Yang	14-Jan-16	FSP endorsed by CEO

### World Bank

6915	152230	FP	Climate Change	CEO endorsement of FSP	World Bank	Kazakhstan	Southeast Europe and Central Asia Catastrophe Risk Insurance Facility	Saliha Dobardzic	21-Jan-16	FSP recommended for endorsement (Docs circulating for clearance/signature)
------	--------	----	----------------	------------------------	------------	------------	---	------------------	-----------	--



**Naoko Ishii**  
Chief Executive Officer and Chairperson  
[nishii@thegef.org](mailto:nishii@thegef.org)

## FRONT OFFICE

**Peter Lallas**

Advisor to the Chief Executive Officer  
[plallas@thegef.org](mailto:plallas@thegef.org)  
+1 202 473 9732

**Amornrat Ning Poopetch**

Resource Management Officer  
[apoopetch@thegef.org](mailto:apoopetch@thegef.org)  
+1 202 458 4366

**Esther Pormes**

Senior Executive Assistant  
[epormes@thegef.org](mailto:epormes@thegef.org)  
+1 202 473 8736

**Claus Pram Astrup**

Advisor to the Chief Executive Officer  
[castrup@worldbank.org](mailto:castrup@worldbank.org)  
+ 1 202 478 7270

**Julienne Kouame**

Program Analyst  
[jkouame@thegef.org](mailto:jkouame@thegef.org)  
+1 202 473 8736

## Communications

**Robert Bisset**

Head of Communications  
[chofer@thegef.org](mailto:chofer@thegef.org)  
+1 202 458 5191

**Patrizia Cocca**

Communications Officer and KM  
Coordinator [pcocca@thegef.org](mailto:pcocca@thegef.org)  
+1 202 458 0234

**Mandakini Sud**

Communications Consultant  
[msud@thegef.org](mailto:msud@thegef.org)

**Christian Hofer**

Senior Communications Officer  
[chofer@thegef.org](mailto:chofer@thegef.org)  
+1 202 458 0936

**Camila Perez Gabilondo**

ET Temporary - Communications  
[cperez@thegef.org](mailto:cperez@thegef.org)  
+1 202 458 0895

---

Mailing Address:

**GEF Secretariat**

1818 H Street, NW, MSN P4-400  
Washington, D.C. 20433  
+1 202 473 0508; Fax: +1 202 522 3240/3245

## POLICY AND OPERATIONS

### **Elwyn Grainger-Jones**

Director

[egraingerjones@thegef.org](mailto:egraingerjones@thegef.org)

+ 1 202 473 8782

#### **Abeer Mohammed Abdul Kal Al Dagestani**

Country Relations Officer

[aadagestani@worldbank.org](mailto:aadagestani@worldbank.org)

+1 202 473 2994

#### **Amanda Adams**

Program Assistant

[aadams@thegef.org](mailto:aadams@thegef.org)

+1 202 473 9878

#### **Christina Bogyo**

Senior Program Assistant

[cbogyo@thegef.org](mailto:cbogyo@thegef.org)

+1 202 473 6974

#### **Deepak Kataria**

Coordinator - Information Technology

[dkataria@thegef.org](mailto:dkataria@thegef.org)

+1 202 473 3881

#### **Henry Salazar**

Coordinator - Operations

[hsalazar@thegef.org](mailto:hsalazar@thegef.org)

+1 202 473 8226

#### **Juman Byun**

Business Solutions Officer

[jbyun@thegef.org](mailto:jbyun@thegef.org)

+1 202 458 7987

#### **Minna Maria Kononen**

Country Relations Officer

[mkononen@thegef.org](mailto:mkononen@thegef.org)

+1 202 473 9402

#### **Nicolas Alejandro Marquez Pizzanelli**

Extended Term Consultant

Country Relations

[nmarquez@thegef.org](mailto:nmarquez@thegef.org)

+1 202 473 9522

#### **Omid Parhizkar**

Operations Officer

[oparhizkar@thegef.org](mailto:oparhizkar@thegef.org)

+1 202 458 5506

#### **Akila Nazneen**

Financial Assistant

[anazneen@thegef.org](mailto:anazneen@thegef.org)

+1 202 473 1760

#### **Andrew Velthaus**

Coordinator - Policy and Strategy

[avelthaus@thegef.org](mailto:avelthaus@thegef.org)

+1 202 473 9073

#### **Christine Roehrer**

Coordinator – Results Based Management

[croehrer@worldbank.org](mailto:croehrer@worldbank.org)

+1 202 473-0337

#### **Gabriella Richardson-Temm**

Extended Term Consultant - Gender and Social Issues

[grichardsontemm@thegef.org](mailto:grichardsontemm@thegef.org)

#### **Herbert Acquay**

Manager - Policy, Partnerships and Operations

[hacquay@worldbank.org](mailto:hacquay@worldbank.org)

+1 202 473 1043

#### **Lesly Rigaud**

Client Technologies Officer

[lrigaud@thegef.org](mailto:lrigaud@thegef.org)

+1 202 473 3881

#### **Naiying Peng**

Operations Analyst

[npeng@thegef.org](mailto:npeng@thegef.org)

+1 202 458 9580

#### **Olivier Besson**

Program Assistant

[obesson@thegef.org](mailto:obesson@thegef.org)

+1 202 473-8935

#### **Oreste Pedro Maia Andrade Junior**

Consultant

[omniaandradejr@thegef.org](mailto:omniaandradejr@thegef.org)

+1 202 478 9387

**Pilar Barrera**  
Coordinator - Partnerships and Resource  
Mobilization  
[pbarrera@thegef.org](mailto:pbarrera@thegef.org)  
+1 202 458 9891

**Raul Rodriguez**  
Temporary  
[rrodriguez@thegef.org](mailto:rrodriguez@thegef.org)

**Regine Mpoyi**  
Program Assistant  
[rmpoyi@thegef.org](mailto:rmpoyi@thegef.org)  
+1 202 473 2754

**Seo-Jeong Yoon**  
Policy Officer  
[syoon@thegef.org](mailto:syoon@thegef.org)  
+1 202 473 7832

**Susan Waithaka**  
Country Relations Officer  
[swaithaka@thegef.org](mailto:swaithaka@thegef.org)  
+1 202 473 5457

**William Ehlers**  
Coordinator – Country Relations/  
Secretartary to the Concil  
[wehlers@thegef.org](mailto:wehlers@thegef.org)  
+1 202 458 9436

**Yoko Watanabe**  
Coordinator – Gender and Social Issues  
[ywatanabe@thegef.org](mailto:ywatanabe@thegef.org)  
+1 202 473 9847

**Quynh Xuan Thi Phan**  
Financial Officer  
[qphan1@worlbank.org](mailto:qphan1@worlbank.org)  
+1 202 458 4760

**Ramon Prudencio C de Mesa**  
Operations Officer  
[rmesa@thegef.org](mailto:rmesa@thegef.org)  
+1 202 458 9285

**Robert Schreiber**  
Program Coordinator  
[rschreiber@thegef.org](mailto:rschreiber@thegef.org)  
+1 202 458 0288

**Sonja Sabita Teelucksingh**  
Environmental Specialist  
[steelucksingh@thegef.org](mailto:steelucksingh@thegef.org)  
+1 202 458 4004

**Thomas Biegel**  
Consultant  
[tbiegel@thegef.org](mailto:tbiegel@thegef.org)  
+1 202 473 9252

**Yasemin Biro**  
Coordinator - Knowledge Management  
[ybiro@thegef.org](mailto:ybiro@thegef.org)  
+1 202 473 1550

---



## PROGRAMS

### **Gustavo Fonseca**

Director

[gfonseca@thegef.org](mailto:gfonseca@thegef.org)

+ 1 202 458 4818

#### **Anil Bruce Sookdeo**

Chemicals and Waste Focal Area Coordinator

[asookdeo@thegef.org](mailto:asookdeo@thegef.org)

+1 202 458 0683

#### **Camila Florez Bossio**

Extended Term Consultant

[cflorezbossio@thegef.org](mailto:cflorezbossio@thegef.org)

+1 202 473-4346

#### **Christian Severin**

International Waters Focal Area Coordinator

[cseverin@thegef.org](mailto:cseverin@thegef.org)

+1 202 458 2001

#### **David Rodgers**

Climate Change Mitigation Focal Area Coordinator

[drodgers@thegef.org](mailto:drodgers@thegef.org)

+1 202 458 9869

#### **Evelyn Swain**

Environmental Specialist

[eswain@thegef.org](mailto:eswain@thegef.org)

+1 202 473 1151

#### **Flavius Mihaies**

Consultant, Climate and Chemicals

[fmihaies@thegef.org](mailto:fmihaies@thegef.org)

+1 202 560 4934

#### **Ibrahima Sow**

Africa Regional Coordinator

[isow@thegef.org](mailto:isow@thegef.org)

+1 202 473 2716

#### **Jean-Marc Sinnassamy**

Senior Environmental Specialist

[jsinnassamy@thegef.org](mailto:jsinnassamy@thegef.org)

+1 202 478 8060

#### **Kettly Denis**

Program Assistant

[kdenis@thegef.org](mailto:kdenis@thegef.org)

+1 202 473 0825

#### **Astrid Hillers**

Senior Environmental Specialist

[ahillers@thegef.org](mailto:ahillers@thegef.org)

+1 202 458 8173

#### **Chizuru Aoki**

Lead Environmental Specialist - Multilateral  
Environmental Agreements

[caoki@thegef.org](mailto:caoki@thegef.org)

+1 202 473 6068

#### **Claude Gascon**

Lead Program Manager

[cgascon@thegef.org](mailto:cgascon@thegef.org)

+1 202 458 9755

#### **David Rodgers**

Climate Change Mitigation Focal Area Coordinator

[drodgers@thegef.org](mailto:drodgers@thegef.org)

+1 202 458 9869

#### **Fareeha Iqbal**

Climate Change Specialist

[fiqball@thegef.org](mailto:fiqball@thegef.org)

+1 202 458 9593

#### **Glynis Barber**

Program Assistant

[gbarber@thegef.org](mailto:gbarber@thegef.org)

+1 202 473 9647

#### **Jaime Cavelier**

Senior Biodiversity Specialist

[jcavelier@thegef.org](mailto:jcavelier@thegef.org)

+1 202 473 4886

#### **Kathryn Cherrie**

Senior Program Assistant

[kcherrie@thegef.org](mailto:kcherrie@thegef.org)

+1 202 458 1460

#### **Knut Roland Sundstrom**

Climate Change Specialist

[ksundstrom@thegef.org](mailto:ksundstrom@thegef.org)

+1 202 473 7510

**Leah Karrer**  
Senior Environmental Specialist  
[lkarrer@thegef.org](mailto:lkarrer@thegef.org)  
+1 202 473 8364

**Mark Zimsky**  
Latin America Regional Coordinator/  
Biodiversity Focal Area Coordinator  
[mzimsky@thegef.org](mailto:mzimsky@thegef.org)  
+1 202 473 7855

**Milena Gonzalez Vasquez**  
Junior Professional Associate  
[mgonzalezvasquez@thegef.org](mailto:mgonzalezvasquez@thegef.org)  
+1 202 458 1284

**Mohamed Imam Bakarr**  
Lead Environmental Specialist - Program Strategy  
[mbakarr@thegef.org](mailto:mbakarr@thegef.org)  
+1 202 458 8890

**Nhu Quynh Phan**  
Program Assistant  
[nphan@thegef.org](mailto:nphan@thegef.org)  
+1 202 473 4236

**Pascal Martinez**  
Senior Climate Change Specialist  
[pmartinez2@thegef.org](mailto:pmartinez2@thegef.org)  
+1 202 458-9755

**Saliha Dobardzic**  
Senior Climate Change Specialist  
[sdobardzic@thegef.org](mailto:sdobardzic@thegef.org)  
+1 202 473 5943

**Shakil Kayani**  
Program Assistant  
[skayani@thegef.org](mailto:skayani@thegef.org)  
+1 202 458 4680

**Tigest Tirfe**  
Program Assistant  
[ttirfe@thegef.org](mailto:ttirfe@thegef.org)  
+1 202 458 9297

**Lulwa Ali**  
Senior Environmental Specialist  
[lali1@thegef.org](mailto:lali1@thegef.org)  
+1 202 473 5618

**Masako Ogawa**  
Senior Environment Specialist  
[mogawa2@thegef.org](mailto:mogawa2@thegef.org)  
+1 202 458 2789

**Ming Yang**  
Senior Climate Change Specialist  
[myang@thegef.org](mailto:myang@thegef.org)  
+1 202 473 5707

**Monica Fernandes**  
Senior Program Assistant  
[mfernandes@thegef.org](mailto:mfernandes@thegef.org)  
+1 202 473 9647

**Nicole Glineur**  
Senior Environmental Specialist  
[nglineur@thegef.org](mailto:nglineur@thegef.org)  
+1 202 473 2512

**Rawleston Moore**  
SIDS Regional Coordinator/  
Climate Change Adaptation Focal Area  
Coordinator  
[rmoore1@thegef.org](mailto:rmoore1@thegef.org)  
+ 1 202 473 8231

**Sarah Wyatt**  
Operations Analyst  
[swyatt@thegef.org](mailto:swyatt@thegef.org)  
+1 202 473 0534

**Steffen Hansen**  
Junior Professional Officer  
[shansen@thegef.org](mailto:shansen@thegef.org)  
+1 202 458 8796

**Ulrich Apel**  
Europe and Central Asia Regional Coordinator/  
Land Degradation Focal Area Coordinator  
[uapel@thegef.org](mailto:uapel@thegef.org)  
+1 202 473 2573

**Xiaomei Tan**  
Climate Change Specialist  
[xtan1@thegef.org](mailto:xtan1@thegef.org)  
+1 202 473 7448

**Yoko Watanabe**  
Asia Regional  
Coordinator  
[ywatana@thegef.org](mailto:ywatanabe@thegef.org)  
+1 202 473 9847

---

## GEF DIRECTORY OF ADDRESSEES

### GEF Secretariat

**GEF Secretariat<sup>1</sup>**  
**Program Coordination Registry**  
1818 H Street, NW  
Washington, D.C. 20433, USA  
[gcoordination@thegef.org](mailto:gcoordination@thegef.org)

Attn: Mr. Henry Salazar  
Coordinator - Operations  
[hsalazar@thegef.org](mailto:hsalazar@thegef.org)  
+1 202 473 8226

### GEF Trustee

**International Bank for Reconstruction and Development (The World Bank) Registry**  
1818 H Street, NW  
Washington, D.C. 20433, USA  
[geftrustee@worldbank.org](mailto:geftrustee@worldbank.org)

Mr. Praveen Desabatla  
Team Leader, DFPTF  
[pdesabatla@worldbank.org](mailto:pdesabatla@worldbank.org)  
+1 202 458 2099

### Convention Secretariats

**UN Convention on Biological Diversity (CBD)**  
413 rue Saint-Jacques, Suite 800  
Montreal, Quebec, Canada H2Y 1 N9  
[Secretariat@cbd.int](mailto:Secretariat@cbd.int)

Attn: Mr. Braulio F. de Souza Dias  
Executive Secretary  
*GEF Contact Person: Mr. Yibin Xiang*  
*Program Officer*  
[Yibin.xiang@cbd.int](mailto:Yibin.xiang@cbd.int)  
+1 514 288 2220

**UN Framework on Climate Change Convention (UNFCCC)**  
Haus Carstanjen  
Martin Luther King Strasse 8  
53175 Bonn, Germany  
[secretariat@unfccc.int](mailto:secretariat@unfccc.int)

Attn: Ms. Christiana Figueres  
Executive Secretary  
*GEF Contact Person: Mr. Yolando Velasco Manager, FTC Programme*  
[gefenabling.activities@unfccc.int](mailto:gefenabling.activities@unfccc.int)  
[gefprojects@unfccc.int](mailto:gefprojects@unfccc.int)  
+45228 815 1999

**Secretariat of the Basel, Rotterdam and Stockholm Conventions**  
UNEP International Environment House 1  
11-13 Chemin des Anemones  
1219 Chatelaine, Geneva, Switzerland

Attn: Dr. Rolph Payet  
Executive Secretary  
*Mr. Frank Moser*  
*GEF Focal Point*  
*Office of the Executive Secretary*  
[frank.moser@brsmeas.org](mailto:frank.moser@brsmeas.org)  
+41 22 917 8951

---

**UN Convention to Combat Desertification  
(UNCCD)**

Herrmann-Ehlers Str. 10  
D-53113 Bonn, Germany  
[secretariat@unccd.int](mailto:secretariat@unccd.int)

Attn: Ms. Monique Barbut  
Executive Secretary

*GEF Contact Person: Ms. Anja Thust*  
*Program Officer, FCMI Unit*  
[athust@unccd.int](mailto:athust@unccd.int)  
+49 228 815 2828

---

**Interim Secretariat of the Minamata Convention**

International Environment House 1  
13, chemin des Anémones  
CH-1219 Chatelaine, Geneva  
Switzerland

Mr. Jacob Duer  
Coordinator, Minamata Convention  
[jacob.duer@unep.org](mailto:jacob.duer@unep.org)  
+41 22 917 82 17

---

---

<sup>1</sup> GEF Secretariat's physical address: Presidential Plaza Building, 900 19th Street, NW, Washington, D.C. 20006

## STAP Panel and Secretariat

### Panel

**Rosina Bierbaum**

Chairperson

[rbierbau@umich.edu](mailto:rbierbau@umich.edu)

+1 734 763 8675

---

**Ralph E. Sims**

Panel Member on Climate Change Mitigation

[R.E.Sims@massey.ac.nz](mailto:R.E.Sims@massey.ac.nz)

+64 21 166 4555

---

**Brian Child**

Panel Member on Biodiversity

[bchild@ufl.edu](mailto:bchild@ufl.edu)

+352 392 0494

---

**Ricardo Barra**

Panel Member on Chemicals & Waste

[ricbarra@udec.cl](mailto:ricbarra@udec.cl)

56-41-2204002

---

**Annette Cowie**

Panel Member on Land Degradation

[annette.cowie@une.edu.au](mailto:annette.cowie@une.edu.au)

+61 2 677 28080

---

**Jakob Granit**

Panel Member on International Waters

[jakob.granit@sei-international.org](mailto:jakob.granit@sei-international.org)

+46 73 707 8536

---

**Anand Patwardhan**

Panel Member on Adaptation

[apat@umd.edu](mailto:apat@umd.edu)

+1 301 405 3413

---

**Michael Stocking**

Advisor to the STAP Chair

[m.stocking@uea.ac.uk](mailto:m.stocking@uea.ac.uk)

+44 1603 592 339

---

**Thomas E. Lovejoy**

Advisor to the STAP Chair

[tlovejoy@unfoundation.org](mailto:tlovejoy@unfoundation.org)

---

### Secretariat

**Thomas Hammond**

STAP Secretary

[thomas.hammond@unep.org](mailto:thomas.hammond@unep.org)

+1 202 974 1318

---

**Guadalupe Duron**

Programme Officer

[guadalupe.duron@unep.org](mailto:guadalupe.duron@unep.org)

+1 202 974 1313

---

**Robin Burgess**

Programme Assistant

[robin.burgess@unep.org](mailto:robin.burgess@unep.org)

+1 202 974 1311

---

**Christine Wellington-Moore**

Senior Programme Officer

[christine.wellington-moore@unep.org](mailto:christine.wellington-moore@unep.org)

+1 202 974 1303

---

**Lev Neretin**

Senior Programme Officer

[lev.neretin@unep.org](mailto:lev.neretin@unep.org)

+1 202 621 5020

---

**Virginia Gorsevski**

Consultant

[virginia.gorsevski@unep.org](mailto:virginia.gorsevski@unep.org)

+1 202 621 5039

---

## GEF Agency Secretariats

### **African Development Bank (AfDB) Registry**

Headquarters  
01 BP 1387 Abidjan 01  
Côte d'Ivoire  
[Gef\\_afdb@afdb.org](mailto:Gef_afdb@afdb.org)

Mr. Mahamat Assouyouiti  
GEF Coordinator  
[m.assouyouiti@afdb.org](mailto:m.assouyouiti@afdb.org)

*Copy to:*  
*Mr. Kurt Lonsway*  
*Division Manager, Environment and Climate*  
*Change*  
[k.lonsway@afdb.org](mailto:k.lonsway@afdb.org)

### **Asian Development Bank (ADB) Registry**

6 ADB Avenue  
Mandaluyong City 1550  
Metro Manila, Philippines  
[adbgef@adb.org](mailto:adbgef@adb.org)

Attn: Mr. Nessim Ahmad  
Director, Environment and Social Safeguards  
and GEF Official Focal Point  
[njahmad@adb.org](mailto:njahmad@adb.org)

*Copy to:*  
*Mr. Bruce Dunn*  
*ADB/GEF Coordinator*  
[bdunn@adb.org](mailto:bdunn@adb.org)  
+632 683 1922/ +632 683 1923

### **European Bank for Reconstruction and Development (EBRD) Registry**

One Exchange Square  
London EC2A 2JN, United Kingdom  
[ebrdgef@ebrd.com](mailto:ebrdgef@ebrd.com)

Attn: Ms. Marta Simonetti  
Senior Manager  
(Multilateral Funds – Climate and Environment)  
EBRD GEF Executive Coordinator  
Donor Co-Financing – VP Policy  
[simonetm@ebrd.com](mailto:simonetm@ebrd.com)  
+ 0044 (0) 207338 7259  
+ 0044 (0) 7921 039815

### **United Nations Food and Agriculture Organization (FAO) Registry**

Viale Dell Terme di Caracalla  
00153 Rome, Italy  
[GEF-Coordination-Unit@fao.org](mailto:GEF-Coordination-Unit@fao.org)

Attn: Mr. Gustavo Merino  
Director, Investment Centre Division  
[TCI-Director@fao.org](mailto:TCI-Director@fao.org)  
[faogef@fao.org](mailto:faogef@fao.org)  
+3906 570 54477

*Copy to:*  
*Mr. Jeffrey Griffin*  
*Senior Coordinator - GEF*  
*Investment Center Division*  
[Jeffrey.Griffin@fao.org](mailto:Jeffrey.Griffin@fao.org)  
+3906 570 55680

## GEF Agency Secretariats cont'd

### **Inter-American Development Bank (IDB) Registry**

1300 New York Avenue, NW  
Washington, D.C. 20577, USA  
[ldb-gef@iadb.org](mailto:ldb-gef@iadb.org)

Mr. Michael Collins  
GEF Coordinator  
[michaelc@iadb.org](mailto:michaelc@iadb.org)  
+ 1 202 623 2158

### **International Bank for Reconstruction and Development (The World Bank) Registry**

1818 H Street, NW Washington,  
D.C. 20433, USA  
[wbgfoperations@worldbank.org](mailto:wbgfoperations@worldbank.org)

Ms. Karin Shepardson  
GEF Executive Coordinator  
[kshepardson@worldbank.org](mailto:kshepardson@worldbank.org)  
+ 1 202 458 1398

### **International Fund for Agricultural Development (IFAD) Registry**

Via Paolo di Dono, 44  
00142 Rome, Italy  
[ECDmailbox@ifad.org](mailto:ECDmailbox@ifad.org)

Mr. Perin Saint-Ange  
Associate Vice President,  
Programme Management Department  
[p.saintange@ifad.org](mailto:p.saintange@ifad.org)  
+39 06 5459 2448

*Copy to:*

*Ms. Margarita Astrálaga*  
*Director, Environment and Climate Division*  
[m.astralaga@ifad.org](mailto:m.astralaga@ifad.org)  
*Tel: +39 06 5459 2151*

*Ms. Sheila Mwanundu*  
*GEF Coordinator*  
[s.mwanundu@ifad.org](mailto:s.mwanundu@ifad.org)  
*Tel: +39 06 5459 2031*

*Ms. Aisha Nazario*  
[a.nazario@ifad.org](mailto:a.nazario@ifad.org)  
*Tel: +39 06 5459 2459*

### **United Nations Environment Programme (UNEP) Registry**

United Nations Avenue  
Gigiri, PO Box 30552  
00100 Nairobi, Kenya  
[Unepgef@unep.org](mailto:Unepgef@unep.org)

Local Office:

900 17th Street, NW  
Suite 506, Washington, D.C. 20006

Ms. Brennan VanDyke  
GEF Executive Coordinator  
Deputy Director, Office for Operations  
[vandyke@un.org](mailto:vandyke@un.org)  
Tel: (917) 367-2114

*Copy to:*

*Ms. Kelly West*  
*Senior GEF Portfolio Manager*  
*Office for Operations*  
[Kelly.West@unep.org](mailto:Kelly.West@unep.org)



## GEF Agency Secretariats cont'd

**United Nations Industrial Development Organization (UNIDO) Registry**  
Vienna International Centre  
PO Box 300  
A-1400 Vienna, Austria  
[gef@unido.org](mailto:gef@unido.org)

Mr. Juergen Hierold  
GEF Coordinator  
[J.Hierold@unido.org](mailto:J.Hierold@unido.org)  
+43 1 26026 4565

**United Nations Development Programme (UNDP) Registry**  
304 East 45th Street  
New York, NY 10017, USA  
[undpgef@undp.org](mailto:undpgef@undp.org)

Attn: Ms. Adriana Dinu  
GEF Executive Coordinator  
[Adriana.dinu@undp.org](mailto:Adriana.dinu@undp.org)  
+1 212 906 5143

## GEF Project Agency Secretariats

**Corporación Andina de Fomento (CAF)**  
380 Enrique Canaval Moreyra Ave., 13th Floor,  
San Isidro, Lima  
Lima 27, Peru  
[CAFGEF@caf.com](mailto:CAFGEF@caf.com)

Attn: René Gómez García Palao  
Senior Executive  
[rgomezgarcia@caf.com](mailto:rgomezgarcia@caf.com)  
+511-710-8530

*Copy to:*  
*Ms. Ligia Castro de Doens,*  
*Director*  
*Environment*  
[lcastro@caf.org](mailto:lcastro@caf.org)

**Conservation International (CI)**  
2011 Crystal Drive, Suite 500  
Arlington VA, 22202  
USA  
[CIGEF@conservation.org](mailto:CIGEF@conservation.org)

Attn: Mr. Miguel Morales  
Vice President/ Managing Director  
CI-GEF Project Agency  
[mamorales@conservation.org](mailto:mamorales@conservation.org)

*Copy to:*  
[osamaroo@conservation.org](mailto:osamaroo@conservation.org)

## GEF Project Agency Secretariats cont'd

**Development Bank of Southern Africa  
(DBSA)**

1258 Lever Road, Headway Hill  
Midrand, 1685  
South Africa  
[DBSAGEF@dbsa.org](mailto:DBSAGEF@dbsa.org)

Attn: Ms. Nomsa T. Zondi  
GEF Coordinator  
[nomsaz@dbsa.org](mailto:nomsaz@dbsa.org)  
+27 11 313 3491

**Foreign Economic Cooperation Office  
(FECO)**

Ministry of Environmental Protection  
ECO Building  
No.5 Houyingfang Hutong  
Xicheng District, Beijing 100035, China  
[FECOGEF@mepfeco.org.cn](mailto:FECOGEF@mepfeco.org.cn)

Attn: Mr. Xiao Xuezhi  
Deputy Director General  
[xiao.xuezhi@mepfeco.org.cn](mailto:xiao.xuezhi@mepfeco.org.cn)  
+ 86-10-82268807

*Copy to:*  
*Ms. Chen Haijun*  
*Director,*  
[chen.haijun@mepfeco.org.cn](mailto:chen.haijun@mepfeco.org.cn)  
+ 86-10-82268846

Ms. Yan Wei  
Senior Project Manager  
[yan.wei@mepfeco.org.cn](mailto:yan.wei@mepfeco.org.cn)  
+ 86-10-82268848

**International Union for Conservation of  
Nature (IUCN)**

Rue Mauverney, 28  
CH-1196 Gland,  
Switzerland  
[IUCN-GEF@iucn.org](mailto:IUCN-GEF@iucn.org)

Attn: Cyrie Sendashonga  
Global Director, Policy and Programme  
[Cyriaque.Sendashonga@iucn.org](mailto:Cyriaque.Sendashonga@iucn.org)  
+41 22 999 03 17

*Copy to:*  
*Mr. Jean-Yves Pirot,*  
*Head, GEF Coordination Unit*  
[jean-yves.pirot@iucn.org](mailto:jean-yves.pirot@iucn.org)  
+41 22 999 02 56

*Mr. Sébastien Delahaye*  
*Portfolio Manager*  
*GEF Coordination Unit*  
[Sebastien.Delahaye@iucn.org](mailto:Sebastien.Delahaye@iucn.org)  
+41 22 999 02 51

## GEF Project Agency Secretariats cont'd

---

**World Wildlife Fund, Inc. (WWF-US)**  
1250 24th St, NW  
Washington, DC 20037-1193  
[WWFGEF@wwfus.org](mailto:WWFGEF@wwfus.org)

Attn: Dr. David S. McCauley  
Senior Vice President  
Policy and Government Affairs  
[david.mccauley@wwfus.org](mailto:david.mccauley@wwfus.org)  
+1-202-495-4159

*Copy to:*  
*Mr. Hervé Lefevre*  
*Senior Director, GEF Relations and*  
*GEF Coordinator*  
[Herve.Lefevre@wwfus.org](mailto:Herve.Lefevre@wwfus.org)  
+1-202-459-8533

**Fundo Brasileiro para a Biodiversidade (FUNBIO)**  
Rua Voluntários da Pátria, 286 5º andar  
Botafogo, Rio de Janeiro, RJ  
22270-014  
[funbiogef@funbio.org.br](mailto:funbiogef@funbio.org.br)

Attn: Fabio Heuseler Ferreira leite  
GEF Coordinator  
[fabio.leite@funbio.org.br](mailto:fabio.leite@funbio.org.br)  
+ 55 21 2123-5326

*Copy to:*  
[agenciageg@funbio.org.br](mailto:agenciageg@funbio.org.br)

---

**DISTRIBUTION LIST WHEN SUBMITTING PROJECT PROPOSALS  
FOR GEF CEO APPROVAL/ENDORSEMENT**

As a rule, all GEF Agencies are expected to circulate their project proposals to the GEF Secretariat, GEF Agencies, and STAP and to the relevant Convention Secretariat.

**Standard Distribution List for all projects (PIF, PPG, FSP, MSP, and EA):**

gcoordination@thegef.org  
STAP.Secretariat@unep.org  
thomas.hammond@unep.org  
adbgef@adb.org  
bdunn@adb.org  
njahmad@adb.org  
gef\_afdb@afdb.org  
m.assouyouti@afdb.org  
k.lonsway@afdb.org  
ambengue@boad.org  
dtoe@boad.org  
itraore@boad.org  
straore@boad.org  
ytoure@boad.org  
CIGEF@conservation.org  
lspijkerman@conservation.org  
osamaroo@conservation.org  
DBSAGEF@dbsa.org  
nomsaz@dbsa.org  
ebrdgef@ebrd.com  
simonetm@ebrd.com  
GEF-Coordination-Unit@fao.org  
faogef@fao.org  
TCI-Director@fao.org  
Jeffrey.Griffin@fao.org  
FECOGEF@mepfeco.org.cn  
xiao.xuezh@mepfeco.org.cn  
chen.haijun@mepfeco.org.cn  
yan.wei@mepfeco.org.cn  
FUNBIOGEF@funbio.org.br  
agenciagef@funbio.org.br  
fabio.leite@funbio.org.br  
idb-gef@iadb.org  
michaelc@iadb.org  
ECDmailbox@ifad.org  
p.saintange@ifad.org  
m.astralaga@ifad.org  
s.mwanundu@ifad.org  
a.nazario@ifad.org  
IUCNGEF@iucn.org  
Cyriaque.Sendashonga@iucn.org  
Sebastien.Delahaye@iucn.org  
jean-yves.piro@iucn.org  
unepgef@unep.org  
vandyke@un.org  
Kelly.West@unep.org  
gef@unido.org  
j.hierold@unido.org  
undpgef@undp.org  
adriana.dinu@undp.org  
wbgefoperations@worldbank.org  
WWFGEF@wwfus.org  
David.McCauley@wwfus.org  
Herve.Lefeuvre@wwfus.org

**To be included in the Standard Distribution List as appropriate:**

*For Biodiversity Projects:*

secretariat@cbd.int  
yibin.xiang@cbd.int

*For Climate Change Projects:*

gefprojects@unfccc.int  
gefenabling.activities@unfccc.int

*For Land Degradation Projects:*

secretariat@unccd.int  
athust@unccd.int

*For Mercury Projects*

jacob.duer@unep.org  
shelia.logan@unep.org

*For POPs Projects:*

ta@brsmeas.org  
maria.cardenas@brsmeas.org  
frank.moser@brsmeas.org