



# PROGRAM MANAGEMENT

November 28<sup>th</sup>, 2016 - December 2<sup>nd</sup>, 2016

A weekly update on the GEF Program Management

## Calendar

- Council Meeting Schedules
- GEFOP Meeting Schedules

## Projects

- GEF Project Concepts, Proposals, Draft Documents Received
- Project Clearances, Approvals, Endorsements and Other Comments

## Contacts

- GEF Secretariat Staff
- GEF Agencies
- GEF Trustee Convention Secretariats

## Communications

- Introducing new staff to the GEFSEC
- Announcements

## SCHEDULE OF FORTHCOMING GEF COUNCIL MEETINGS

Meetings/Consultations	May 2017
GEF Council Consultations with Civil Society	May 22
GEF Council Meeting	May 23 - 25
LDCF/SCCF Council Meeting	May 25
STAP Panel Meetings	

### GEF Work Program Calendar for 2017

Events	May CWP
Receipt deadline for PIF/PFD	March 3
GEF GPU Technical Clearance Deadline	March 31
GEF PPO Clearance Deadline	April 7
CEO WP Approval	April 14
Draft Cover Note to Agencies, ConvSec, STAP	April 18
Inter-Agency Meeting with ConvSec, STAP	April 20
Posting of Work Program	April 25
Council Meeting	May 23-25
Council Approval	May 25

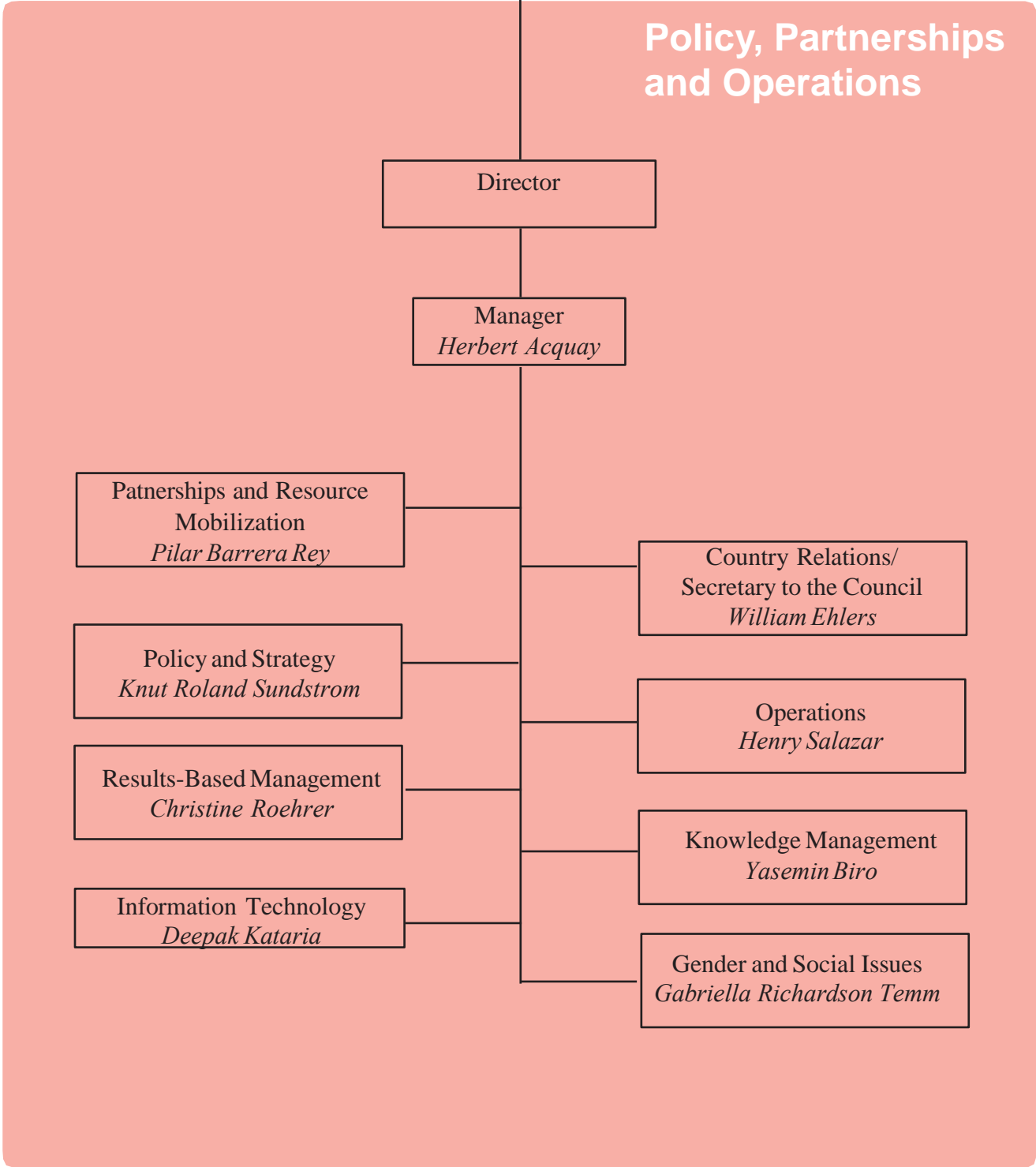
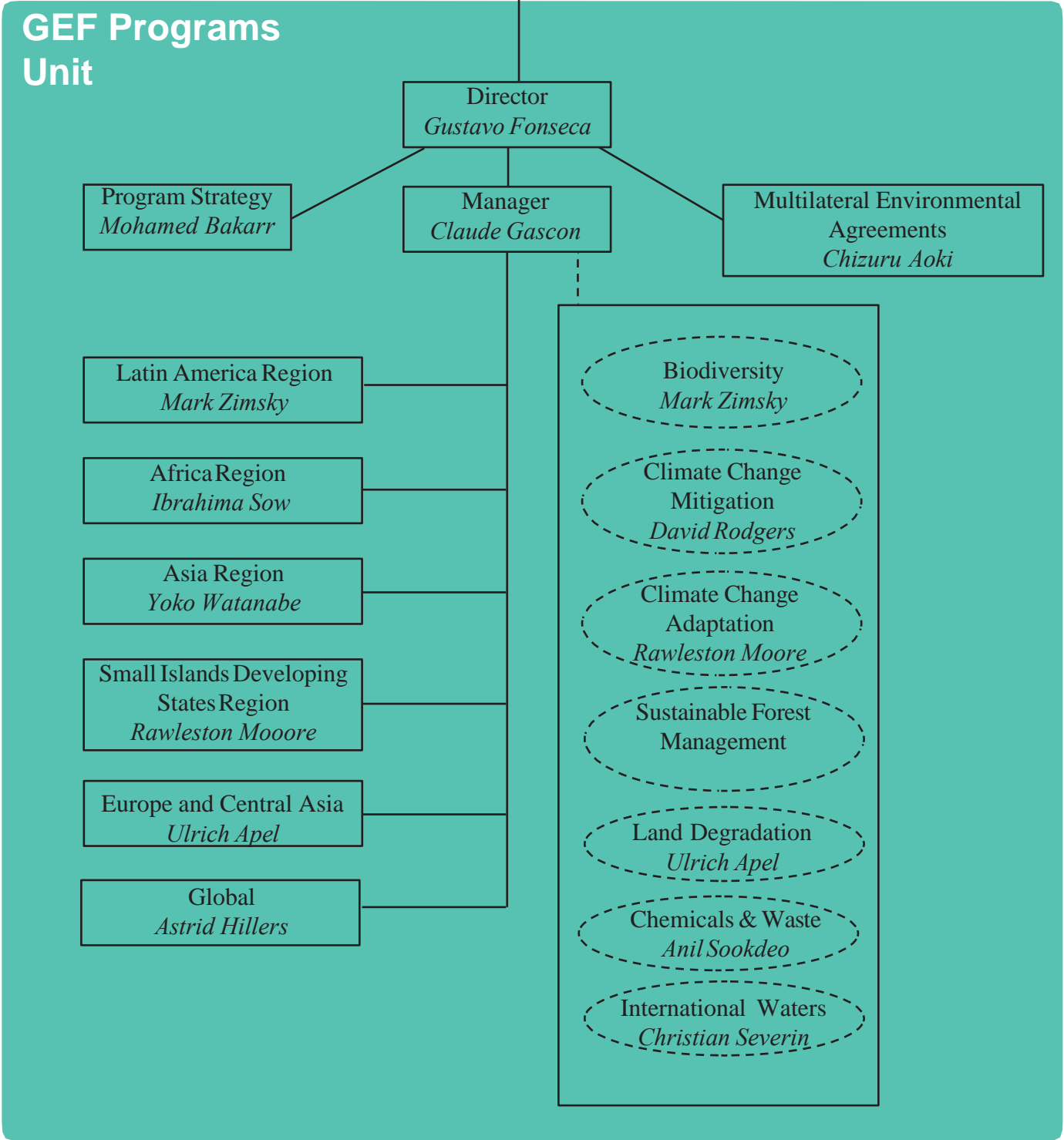
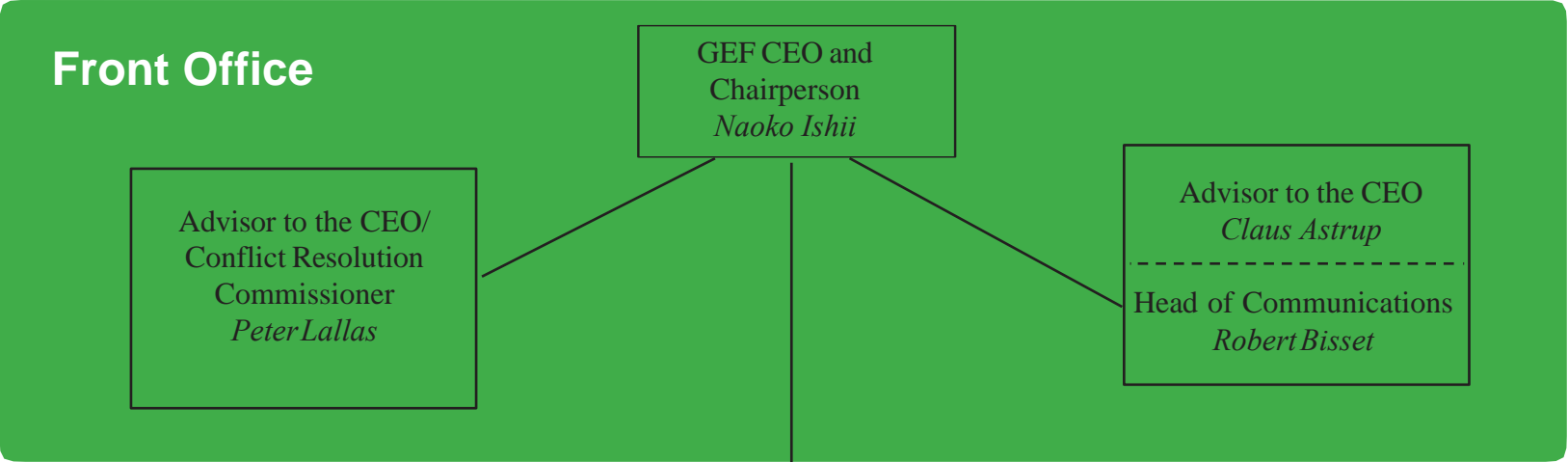
**✚ Kindly see below the link to the Compilation of Council Comments for the October 2016 Work Program.**

<https://www.thegef.org/work-programs>

<https://www.thegef.org/work-program-documents/compilation-council-comments- october-2016-gef-work-program>

**Fiscal Year '16**  
**Country Support Program Activities**  
**Expanded Constituency Workshops**

**Constituency Meetings**



**Naoko Ishii**  
Chief Executive Officer and Chairperson  
[nishii@thegef.org](mailto:nishii@thegef.org)

## FRONT OFFICE

**Peter Lallas**

Advisor to the Chief Executive Officer  
[plallas@thegef.org](mailto:plallas@thegef.org)  
+1 202 473 9732

**Amornrat Ning Poopech**

Resource Management Officer  
[apoopech@thegef.org](mailto:apoopech@thegef.org)  
+1 202 458 4366

**Esther Pormes**

Senior Executive Assistant  
[epormes@thegef.org](mailto:epormes@thegef.org)  
+1 202 473 8736

**Claus Pram Astrup**

Advisor to the Chief Executive Officer  
[castrup@worldbank.org](mailto:castrup@worldbank.org)  
+ 1 202 478 7270

**Julienne Kouame**

Program Analyst  
[jkouame@thegef.org](mailto:jkouame@thegef.org)  
+1 202 473 8736

**Diego Riano Posada**

Special Assistant  
[drianoposada@thegef.org](mailto:drianoposada@thegef.org)  
+1 202 473 1444

## Communications

**Robert Bisset**

Head of Communications  
[rbisset@thegef.org](mailto:rbisset@thegef.org)  
+1 202 458 5191

**Patrizia Cocca**

Communications Officer and KM Coordinator  
[pcocca@thegef.org](mailto:pcocca@thegef.org)  
+1 202 458 0234

**Alua Satybaldina-Kennedy**

Communications Consultant  
[asatybaldina@worldbank.org](mailto:asatybaldina@worldbank.org)

**Christian Hofer**

Senior Communications Officer  
[chofer@thegef.org](mailto:chofer@thegef.org)  
+1 202 458 0936

**Camila Perez Gabilondo**

Communications Associate  
[cperez@thegef.org](mailto:cperez@thegef.org)  
+1 202 458 0895

---

Mailing Address:

**GEF Secretariat**

1818 H Street, NW, MSN N8-800  
Washington, D.C. 20433  
+1 202 473 0508; Fax: +1 202 522 3240/3245

## POLICY AND OPERATIONS

**Akila Nazneen**  
Financial Assistant  
[anazneen@thegef.org](mailto:anazneen@thegef.org)  
+1 202 473 1760

**Christina Bogyo**  
Senior Program Assistant  
[cbogyo@thegef.org](mailto:cbogyo@thegef.org)  
+1 202 473 6974

**Deepak Kataria**  
Coordinator - Information Technology  
[dkataria@thegef.org](mailto:dkataria@thegef.org)  
+1 202 473 3881

**Henry Salazar**  
Coordinator - Operations  
[hsalazar@thegef.org](mailto:hsalazar@thegef.org)  
+1 202 473 8226

**Juman Byun**  
Business Solutions Officer  
[jbyun@thegef.org](mailto:jbyun@thegef.org)  
+1 202 458 7987

**Lesly Rigaud**  
Client Technologies Officer  
[lrigaud@thegef.org](mailto:lrigaud@thegef.org)  
+1 202 473 3881

**Naiying Peng**  
Operations Analyst  
[npeng@thegef.org](mailto:npeng@thegef.org)  
+1 202 458 9580

**Olha Krushelnytska**  
Operations Officer  
[okrushelnytska@thegef.org](mailto:okrushelnytska@thegef.org)  
+1 202 458 5839

**Amanda Adams**  
Program Assistant  
[aadams@thegef.org](mailto:aadams@thegef.org)  
+1 202 473 9878

**Christine Roehrer**  
Coordinator –Lead Results Based Management  
[croehrer@worldbank.org](mailto:croehrer@worldbank.org)  
+1 202 473-0337

**Gabriella Richardson-Temm**  
Coordinator – Gender and Social Issues  
[grichardsontemm@thegef.org](mailto:grichardsontemm@thegef.org)

**Herbert Acquay**  
Manager - Policy, Partnerships and Operations  
[hacquay@worldbank.org](mailto:hacquay@worldbank.org)  
+1 202 473 1043

**Knut Roland Sundstrom**  
Coordinator - Policy and Strategy  
[ksundstrom@thegef.org](mailto:ksundstrom@thegef.org)  
+1 202 473 7510

**Minna Maria Kononen**  
Country Relations Officer  
[nkononen@thegef.org](mailto:nkononen@thegef.org)  
+1 202 473 9402

**Nicolas Alejandro Marquez Pizzanelli**  
Operations Analyst  
[nmarquez@thegef.org](mailto:nmarquez@thegef.org)  
+1 202 473 9522

**Olivier Besson**  
Program Assistant  
[obesson@thegef.org](mailto:obesson@thegef.org)  
+1 202 473-8935

**Omid Parhizkar**  
Operations Officer  
[oparhizkar@thegef.org](mailto:oparhizkar@thegef.org)  
+1 202 458 2186

**Pilar Barrera**  
Coordinator - Partnerships and  
Resource Mobilization  
[pbarrera@thegef.org](mailto:pbarrera@thegef.org)  
+1 202 458 9891

**Raul Rodriguez**  
Temporary  
[rrodriguez@thegef.org](mailto:rrodriguez@thegef.org)

**Regine Mpoyi**  
Program Assistant  
[rmpoyi@thegef.org](mailto:rmpoyi@thegef.org)  
+1 202 473 2754

**Seo-Jeong Yoon**  
Policy Officer  
[syoon@thegef.org](mailto:syoon@thegef.org)  
+1 202 473 7832

**Susan Waithaka**  
Country Relations Officer  
[swaithaka1@thegef.org](mailto:swaithaka1@thegef.org)  
+1 202 473 5457

**William Ehlers**  
Coordinator – Country Relations/  
Secretary to the Council  
[wehlers@thegef.org](mailto:wehlers@thegef.org)  
+1 202 458 9436

**Oreste Maia Andrade**  
Operations Analyst  
[omaiaandradejr@thegef.org](mailto:omaiaandradejr@thegef.org)  
+1 202 458 9387

**Quynh Xuan Thi Phan**  
Financial Officer  
[qphan1@worldbank.org](mailto:qphan1@worldbank.org)  
+1 202 458 4760

**Ramon Prudencio C de Mesa**  
Operations Officer  
[rmesa@thegef.org](mailto:rmesa@thegef.org)  
+1 202 458 9285

**Robert Schreiber**  
Program Coordinator  
[rschreiber@thegef.org](mailto:rschreiber@thegef.org)  
+1 202 458 0288

**Sonja Sabita Teelucksingh**  
Environmental Specialist  
[steelucksingh@thegef.org](mailto:steelucksingh@thegef.org)  
+1 202 458 4004

**Thomas Biegel**  
Consultant  
[tbiegel@thegef.org](mailto:tbiegel@thegef.org)  
+1 202 473 9252

**Yasemin Biro**  
Coordinator - Knowledge Management  
[ybiro@thegef.org](mailto:ybiro@thegef.org)  
+1 202 473 1550

---

## PROGRAMS

### **Gustavo Fonseca**

Director

[gfonseca@thegef.org](mailto:gfonseca@thegef.org)

+ 1 202 458 4818

#### **Anil Bruce Sookdeo**

Chemicals and Waste Focal Area Coordinator

[asookdeo@thegef.org](mailto:asookdeo@thegef.org)

+1 202 458 0683

#### **Astrid Hillers**

Senior Environmental Specialist

[ahillers@thegef.org](mailto:ahillers@thegef.org)

+1 202 458 8173

#### **Christian Severin**

International Waters Focal Area Coordinator

[cseverin@thegef.org](mailto:cseverin@thegef.org)

+1 202 458 2001

#### **Cyrille Barnerias**

Senior Environment Specialist

[cbarnerias@thegef.org](mailto:cbarnerias@thegef.org)

+1 202 473 8871

#### **Diana Movius**

Consultant

[dmovius@thegef.org](mailto:dmovius@thegef.org)

+1 202 473 4346

#### **Evelyn Swain**

Environment Specialist

[eswain@thegef.org](mailto:eswain@thegef.org)

+1 202 473 1151

#### **Flavius Mihaies**

Consultant, Climate and Chemicals

[fmihaies@thegef.org](mailto:fmihaies@thegef.org)

+1 202 560 4934

#### **Ibrahima Sow**

Africa Regional Coordinator

[isow@thegef.org](mailto:isow@thegef.org)

+1 202 473 2716

#### **Asha Imani Bobb Semple**

Operations Analyst

[abobbsemple@thegef.org](mailto:abobbsemple@thegef.org)

+1 202 473 989

#### **Chizuru Aoki**

Lead Environmental Specialist -

Multilateral Environmental Agreements

[caoki@thegef.org](mailto:caoki@thegef.org)

+1 202 473 6068

#### **Claude Gascon**

Lead Program Manager

[cgascon@thegef.org](mailto:cgascon@thegef.org)

+1 202 458 9755

#### **David Rodgers**

Climate Change Mitigation Focal Area  
Coordinator

[drodgers@thegef.org](mailto:drodgers@thegef.org)

+1 202 458 9869

#### **Dustin Schinn**

Operations Analyst

[dschinn@thegef.org](mailto:dschinn@thegef.org)

+1 202 458 1234

#### **Fareeha Iqbal**

Senior Climate Change Specialist

[fiqball@thegef.org](mailto:fiqball@thegef.org)

+1 202 458 9593

#### **Glynis Barber**

Program Assistant

[gbarber@thegef.org](mailto:gbarber@thegef.org)

+1 202 473 9647

#### **Jaime Cavelier**

Senior Biodiversity Specialist

[jcavelier@thegef.org](mailto:jcavelier@thegef.org)

+1 202 473 4886



**Jean-Marc Sinnassamy**  
Senior Environmental Specialist  
[jsinnassamy@thegef.org](mailto:jsinnassamy@thegef.org)  
+1 202 478 8060

**Kathryn Cherrie**  
Senior Program Assistant  
[kcherrie@thegef.org](mailto:kcherrie@thegef.org)  
+1 202 458 1460

**Kettly Denis**  
Program Assistant  
[kdenis@thegef.org](mailto:kdenis@thegef.org)  
+1 202 473 0825

**Leah Karrer**  
Senior Environmental Specialist  
[lkarrer@thegef.org](mailto:lkarrer@thegef.org)  
+1 202 473 8364

**Lulwa Ali**  
Senior Environmental Specialist  
[lali1@thegef.org](mailto:lali1@thegef.org)  
+1 202 473 5618

**Mark Zimsky**  
Latin America Regional Coordinator/ Biodiversity  
Focal Area Coordinator  
[mzimsky@thegef.org](mailto:mzimsky@thegef.org)  
+1 202 473 7855

**Masako Ogawa**  
Senior Environment Specialist  
[mogawa2@thegef.org](mailto:mogawa2@thegef.org)  
+1 202 458 2789

**Milena Gonzalez Vasquez**  
Junior Professional Associate  
[mgonzalezvasquez@thegef.org](mailto:mgonzalezvasquez@thegef.org)  
+1 202 458 1284

**Ming Yang**  
Senior Climate Change Specialist  
[myang@thegef.org](mailto:myang@thegef.org)  
+1 202 473 5707

**Mohamed Imam Bakarr**  
Lead Environmental Specialist - Program Strategy  
[mbakarr@thegef.org](mailto:mbakarr@thegef.org)  
+1 202 458 8890

**Monica Fernandes**  
Senior Program Assistant  
[mfernandes@thegef.org](mailto:mfernandes@thegef.org)  
+1 202 473 9647

**Nhu Quynh Phan**  
Program Assistant  
[nphan@thegef.org](mailto:nphan@thegef.org)  
+1 202 473 4236

**Nicole Glineur**  
Senior Environmental Specialist  
[nglineur@thegef.org](mailto:nglineur@thegef.org)  
+1 202 473 2512

**Pascal Martinez**  
Senior Climate Change Specialist  
[pmartinez2@thegef.org](mailto:pmartinez2@thegef.org)  
+1 202 458-9755

**Paul Hartman**  
Senior Environmental Specialist  
[phartman@thegef.org](mailto:phartman@thegef.org)

**Rawlestone Moore**  
SIDS Regional Coordinator/ Climate Change  
Adaptation Focal Area Coordinator  
[rmoore1@thegef.org](mailto:rmoore1@thegef.org)  
+ 1 202 473 8231

**Saliha Dobardzic**  
Senior Climate Change Specialist  
[sdobardzic@thegef.org](mailto:sdobardzic@thegef.org)  
+1 202 473 5943

**Shakil Kayani**  
Program Assistant  
[skayani@thegef.org](mailto:skayani@thegef.org)  
+1 202 458 4680

**Sarah Wyatt**  
Operations Analyst  
[swyatt@thegef.org](mailto:swyatt@thegef.org)  
+1 202 473 0534

**Steffen Hansen**  
Junior Professional Officer  
[shansen@thegef.org](mailto:shansen@thegef.org)  
+1 202 458 8796

**Tigest Tirfe**  
Program Assistant  
[ttirfe@thegef.org](mailto:ttirfe@thegef.org)  
+1 202 458 9297

**Ulrich Apel**  
Europe and Central Asia Regional Coordinator/ Land  
Degradation Focal Area Coordinator  
[uapel@thegef.org](mailto:uapel@thegef.org)  
+1 202 473 2573

**Xiaomei Tan**  
Climate Change Specialist  
[xtan1@thegef.org](mailto:xtan1@thegef.org)  
+1 202 473 7448

**Yoko Watanabe**  
Asia Regional Coordinator  
[ywatanabe@thegef.org](mailto:ywatanabe@thegef.org)  
+1 202 473 9847

---

# INDEPENDENT EVALUATION OFFICE

## Juha Uitto

Director

GEF Independent Evaluation Office

[juitto@thegef.org](mailto:juitto@thegef.org)

**Anupam Anand**  
Evaluations Officer  
[aanand2@thegef.org](mailto:aanand2@thegef.org)

**Carlo Carugi**  
Senior Evaluations Officer  
[ccarugi@thegef.org](mailto:ccarugi@thegef.org)  
+1 202 473 8154

**Anna Viggh**  
Senior Evaluations Officer  
[aviggh@worldbank.org](mailto:aviggh@worldbank.org)  
+1 202 4738896

**Kseniya Temnenko**  
Knowledge Management Officer  
[ktemnenko@thegef.org](mailto:ktemnenko@thegef.org)  
+1 202 458 4908

**Jeneen Garcia**  
Evaluation Officer  
[jgarcia2@thegef.org](mailto:jgarcia2@thegef.org)  
+1 202 458 2719

**Francisco Grahammer**  
Information Analyst  
[fgrahammer@thegef.org](mailto:fgrahammer@thegef.org)  
+1 202 473 4914

**Ruben Sardon Martin**  
Consultant  
[rsardon@thegef.org](mailto:rsardon@thegef.org)  
+1 202 473 1703

**Kyoko Matsumoto**  
Senior Evaluation Officer  
[kmatsumoto@thegef.org](mailto:kmatsumoto@thegef.org)  
+1 202 473 2609

**Marie-Constance Manuella Koukoui**  
Senior Executive Assistant  
[mkoukoui@thegef.org](mailto:mkoukoui@thegef.org)  
+1 202 458 9682

**Khondoker Tanveer Haider**  
Consultant  
[khaider@thegef.org](mailto:khaider@thegef.org)

**Neeraj Kumar Negi**  
Senior Evaluations Officer  
[nnegi1@thegef.org](mailto:nnegi1@thegef.org)  
+1 202 473 2259

**Juan Portillo**  
Senior Operations Officer  
[jportillo@worldbank.org](mailto:jportillo@worldbank.org)  
+1 202 473 6056

**Baljit Wadhwa**  
Senior Evaluations Officer  
[bwadhwa@worldbank.org](mailto:bwadhwa@worldbank.org)  
+1 202 473 0266

**Dennis Bours**  
Evaluation Officer  
[sdbours@thegef.org](mailto:sdbours@thegef.org)  
+1 202 458 9153

**Malac Kabir**  
Research Assistant  
[mkabir4@thegef.org](mailto:mkabir4@thegef.org)  
+1 202 473 1808

**Molly Watts**  
Evaluation Analyst  
[mwatts1@thegef.org](mailto:mwatts1@thegef.org)  
+1 202 473 3675

**Sara El Choufi**  
Evaluation Analyst  
[selchoufi@thegef.org](mailto:selchoufi@thegef.org)  
+1 202 458 7069

**Peixuan Zhou**  
Evaluation Analyst  
[pzhou2@thegef.org](mailto:pzhou2@thegef.org)  
+1 202 473 1703

**Evelyn Chihuguyu**  
Program Assistant  
[echihuguyu@thegef.org](mailto:echihuguyu@thegef.org)  
+1 202 473 0654

**Laura Reynolds Nissley**  
Consultant  
[lnissley@thegef.org](mailto:lnissley@thegef.org)

## ADAPTATION FUND BOARD SECRETARIAT

**Mikko Antti Ollikainen**  
Senior Environmental Specialist  
[mollikainen@adaptation-fund.org](mailto:mollikainen@adaptation-fund.org)  
+1 202 458 8912

**Silvia Mancini**  
Operations Officer  
[smancini@adaptation-fund.org](mailto:smancini@adaptation-fund.org)

**Aya Mimura**  
Operations Associate  
[amimura@adaptation-fund.org](mailto:amimura@adaptation-fund.org)  
+1 202 458 7347

**Sophie Hans-Moevi**  
Senior Program Assistant  
[shansmoevi@adaptation-fund.org](mailto:shansmoevi@adaptation-fund.org)  
+1 202 473 0701

**Matthew Pueschel**  
Consultant  
[mpueschel@adaptation-fund.org](mailto:mpueschel@adaptation-fund.org)  
+1 202 473 6743

**Anni Rein**  
Temporary  
[arein@adaptation-fund.org](mailto:arein@adaptation-fund.org)  
+1 202 458 9758

**Daouda Ben Oumar Ndiaye**  
Adaptation Officer  
[dndiaye@adaptation-fund.org](mailto:dndiaye@adaptation-fund.org)  
+1 202 473 4611

**Young Hee Lee**  
Operations Analyst  
[ylee12@adaptation-fund.org](mailto:ylee12@adaptation-fund.org)  
+1 202 473 8219

**Farayi Onias Madziwa**  
Program Officer  
[fmadziwa@adaptation-fund.org](mailto:fmadziwa@adaptation-fund.org)  
+1 202 458 5184

**Hugo Remaury**  
Junior Professional Associate  
[hremaury@adaptation-fund.org](mailto:hremaury@adaptation-fund.org)  
+1 202 473 5463

**Alicia Marie Austin**  
Temporary  
[aaustin@adaptation-fund.org](mailto:aaustin@adaptation-fund.org)  
+1 202 458 9758

---

## GEF DIRECTORY OF ADDRESSEES

### GEF Secretariat

**GEF Secretariat<sup>1</sup>**  
**Program Coordination Registry**  
1818 H Street, NW  
Washington, D.C. 20433, USA  
[gcoordination@thegef.org](mailto:gcoordination@thegef.org)

"UUN: .S. Henry Salazar  
Coordinator-0QFSBUJPOT  
[hsalazar@thegef.org](mailto:hsalazar@thegef.org)  
+1 202 473 8226

### GEF Trustee

**International Bank for Reconstruction and Development (The World Bank) Registry**  
1818 H Street, NW  
Washington, D.C. 20433, USA  
[geftrustee@worldbank.org](mailto:geftrustee@worldbank.org)

Mr. Praveen Desabatla  
Team Leader, DFPTF  
[pdesabatla@worldbank.org](mailto:pdesabatla@worldbank.org)  
+1 202 458 2099

### Convention Secretariats

**UN Convention on Biological Diversity (CBD)**  
413 rue Saint-Jacques, Suite 800  
Montreal, Quebec, Canada H2Y 1 N9  
[Secretariat@cbd.int](mailto:Secretariat@cbd.int)

Attn: Mr. Braulio F. de Souza Dias  
Executive Secretary  
*GEF Contact Person: Mr. Yibin Xiang*  
*Program Officer*  
[Yibin.xiang@cbd.int](mailto:Yibin.xiang@cbd.int)  
+1 514 288 2220

**UN Framework on Climate Change Convention (UNFCCC)**  
Haus Carstanjen  
Martin Luther King Strasse 8  
53175 Bonn, Germany  
[secretariat@unfccc.int](mailto:secretariat@unfccc.int)

Attn: Ms. Christiana Figueres  
Executive Secretary  
*GEF Contact Person(s):*  
- *Ms. Deschen Tsering*  
[DTsering@unfccc.int](mailto:DTsering@unfccc.int)  
- *Mr. Alejandro Kilpatrick*  
[AKilpatrick@unfccc.int](mailto:AKilpatrick@unfccc.int)

[gefenabling.activities@unfccc.int](mailto:gefenabling.activities@unfccc.int)  
[gefprojects@unfccc.int](mailto:gefprojects@unfccc.int)

**Secretariat of the Basel, Rotterdam and Stockholm Conventions**  
UNEP International Environment House 1  
11-13 Chemin des Anemones  
1219 Chatelaine, Geneva, Switzerland

Attn: Dr. Rolph Payet  
Executive Secretary  
*Mr. Frank Moser*  
*GEF Focal Point*  
*Office of the Executive Secretary*  
[frank.moser@brsmeas.org](mailto:frank.moser@brsmeas.org)  
+41 22 917 8951

<sup>1</sup> GEF Secretariat's physical address: 1899 Pennsylvania Avenue, NW, Washington, D.C. 20006

---

**UN Convention to Combat Desertification  
(UNCCD)**

Herrmann-Ehlers Str. 10  
D-53113 Bonn, Germany  
[secretariat@unccd.int](mailto:secretariat@unccd.int)

Attn: Ms. Monique Barbut  
Executive Secretary

*GEF Contact Person: Ms. Anja Thust  
Program Officer, FCMI Unit*

[athust@unccd.int](mailto:athust@unccd.int)  
+49 228 815 2828

---

**Interim Secretariat of the Minamata Convention**

International Environment House 1  
13, chemin des Anémones  
CH-1219 Chatelaine, Geneva  
Switzerland

Mr. Jacob Duer  
Coordinator, Minamata Convention  
[jacob.duer@unep.org](mailto:jacob.duer@unep.org)  
+41 22 917 82 17

---

## STAP Panel and Secretariat

### Panel

**Rosina Bierbaum**

Chairperson

[rbierbau@umich.edu](mailto:rbierbau@umich.edu)

+1 734 763 8675

---

**Ralph E. Sims**

Panel Member on Climate Change Mitigation

[R.E.Sims@massey.ac.nz](mailto:R.E.Sims@massey.ac.nz)

+64 21 166 4555

---

**Brian Child**

Panel Member on Biodiversity

[bchild@ufl.edu](mailto:bchild@ufl.edu)

+352 392 0494

---

**Ricardo Barra**

Panel Member on Chemicals & Waste

[ricbarra@udec.cl](mailto:ricbarra@udec.cl)

56-41-2204002

---

**Annette Cowie**

Panel Member on Land Degradation

[annette.cowie@une.edu.au](mailto:annette.cowie@une.edu.au)

+61 2 677 28080

---

**Jakob Granit**

Panel Member on International Waters

[jakob.granit@sei-international.org](mailto:jakob.granit@sei-international.org)

+46 73 707 8536

---

**Anand Patwardhan**

Panel Member on Adaptation

[apat@umd.edu](mailto:apat@umd.edu)

+1 301 405 3413

---

**Michael Stocking**

Advisor to the STAP Chair

[m.stocking@uea.ac.uk](mailto:m.stocking@uea.ac.uk)

+44 1603 592 339

---

**Thomas E. Lovejoy**

Advisor to the STAP Chair

[tlovejoy@unfoundation.org](mailto:tlovejoy@unfoundation.org)

---

### Secretariat

**Thomas Hammond**

STAP Secretary

[thomas.hammond@unep.org](mailto:thomas.hammond@unep.org)

+1 202 974 1318

---

**Guadalupe Duron**

Programme Officer

[guadalupe.duron@unep.org](mailto:guadalupe.duron@unep.org)

+1 202 974 1313

---

**Robin Burgess**

Programme Assistant

[robin.burgess@unep.org](mailto:robin.burgess@unep.org)

+1 202 974 1311

---

**Christine Wellington-Moore**

Senior Programme Officer

[christine.wellington-moore@unep.org](mailto:christine.wellington-moore@unep.org)

+1 202 974 1303

---

**Lev Neretin**

Senior Programme Officer

[lev.neretin@unep.org](mailto:lev.neretin@unep.org)

+1 202 621 5020

---

**Sarah Lebel**

Climate Adaptation and Resilience Specialist

[sarah.lebel@unep.org](mailto:sarah.lebel@unep.org)

+1 202 621 5036

---

**Virginia Gorsevski**

Consultant

[virginia.gorsevski@unep.org](mailto:virginia.gorsevski@unep.org)

+1 202 621 5039

---

## GEF Agency Secretariats

### **African Development Bank (AfDB) Registry**

Headquarters  
01 BP 1387 Abidjan 01  
Côte d'Ivoire  
[Gef\\_afdb@afdb.org](mailto:Gef_afdb@afdb.org)

Mr. Mahamat Assouyouli  
GEF Coordinator  
[m.assouyouli@afdb.org](mailto:m.assouyouli@afdb.org)

*Copy to:*  
*Mr. Kurt Lonsway*  
*Division Manager, Environment and Climate Change*  
[k.lonsway@afdb.org](mailto:k.lonsway@afdb.org)

### **Asian Development Bank (ADB) Registry**

6 ADB Avenue  
Mandaluyong City 1550  
Metro Manila, Philippines  
[adbgef@adb.org](mailto:adbgef@adb.org)

Attn: Mr. Nessim Ahmad  
Deputy Director General, Sustainable Development and Climate Change Development and GEF Official Focal Point  
[njahmad@adb.org](mailto:njahmad@adb.org)

*Copy to:*  
*Mr. Bruce Dunn*  
*Principal Environment Specialist, Environment and Safeguards and ADB/GEF Coordinator*  
[bdunn@adb.org](mailto:bdunn@adb.org)  
+632 683 1922/ +632 683 1923

### **European Bank for Reconstruction and Development (EBRD) Registry**

One Exchange Square  
London EC2A 2JN, United Kingdom  
[ebrdgef@ebrd.com](mailto:ebrdgef@ebrd.com)

Attn: Ms. Marta Simonetti  
Senior Manager  
(Multilateral Funds – Climate and Environment)  
EBRD GEF Executive Coordinator  
Donor Co-Financing – VP Policy  
[simonetm@ebrd.com](mailto:simonetm@ebrd.com)  
+ 0044 (0) 207338 7259  
+ 0044 (0) 7921 039815

### **United Nations Food and Agriculture Organization (FAO) Registry**

Viale Dell Terme di Caracalla  
00153 Rome, Italy  
[GEF-Coordination-Unit@fao.org](mailto:GEF-Coordination-Unit@fao.org)

Attn: Mr. Gustavo Merino  
Director, Investment Centre Division  
[TCI-Director@fao.org](mailto:TCI-Director@fao.org)  
[faogef@fao.org](mailto:faogef@fao.org)  
+3906 570 54477

*Copy to:*  
*Mr. Jeffrey Griffin*  
*Senior Coordinator - GEF*  
*Investment Center Division*  
[Jeffrey.Griffin@fao.org](mailto:Jeffrey.Griffin@fao.org)  
+3906 570 55680



## GEF Agency Secretariats cont'd

### **Inter-American Development Bank (IDB) Registry**

1300 New York Avenue, NW  
Washington, D.C. 20577, USA  
[idb-gef@iadb.org](mailto:idb-gef@iadb.org)

Mr. Michael Collins  
GEF Coordinator  
[michaelc@iadb.org](mailto:michaelc@iadb.org)  
+ 1 202 623 2158

### **International Bank for Reconstruction and Development (The World Bank) Registry**

1818 H Street, NW Washington,  
D.C. 20433, USA  
[wbgefoperations@worldbank.org](mailto:wbgefoperations@worldbank.org)

Ms. Karin Shepardson  
GEF Executive Coordinator  
[kshepardson@worldbank.org](mailto:kshepardson@worldbank.org)  
+ 1 202 458 1398

*Copy to:*  
*Dominique Isabelle Kayser*  
[dkayser@worldbank.org](mailto:dkayser@worldbank.org)

### **International Fund for Agricultural Development (IFAD) Registry**

Via Paolo di Dono, 44  
00142 Rome, Italy  
[ECDmailbox@ifad.org](mailto:ECDmailbox@ifad.org)

Mr. Perin Saint-Ange  
Associate Vice President,  
Programme Management Department  
[p.saintange@ifad.org](mailto:p.saintange@ifad.org)  
+39 06 5459 2448

*Copy to:*  
*Ms. Margarita Astrálaga*  
*Director, Environment and Climate Division*  
[m.astralaga@ifad.org](mailto:m.astralaga@ifad.org)  
*Tel: +39 06 5459 2151*

*Ms. Sheila Mwanundu*  
*GEF Coordinator*  
[s.mwanundu@ifad.org](mailto:s.mwanundu@ifad.org)  
*Tel: +39 06 5459 2031*

*Ms. Aisha Nazario*  
[a.nazario@ifad.org](mailto:a.nazario@ifad.org)  
*Tel: +39 06 5459 2459*

*Ms. Estibalitz Morras*  
[e.morras@ifad.org](mailto:e.morras@ifad.org)  
*Tel: +39 06 5459 2438*

### **United Nations Environment Programme (UNEP) Registry**

United Nations Avenue  
Gigiri, PO Box 30552  
00100 Nairobi, Ken ya  
[Unepgef@unep.org](mailto:Unepgef@unep.org)

Local Office:  
900 17th Street, NW  
Suite 506, Washington, D.C. 20006

Ms. Brennan VanDyke  
GEF Executive Coordinator  
Deputy Director, Office for Operations  
[brennan.vandyke@unep.org](mailto:brennan.vandyke@unep.org)  
Tel: (917) 367-2114

*Copy to:*  
*Ms. Kelly West*  
*Senior GEF Portfolio Manager*  
*Office for Operations*  
[Kelly.West@unep.org](mailto:Kelly.West@unep.org)

## GEF Agency Secretariats cont'd

### United Nations Industrial Development Organization (UNIDO) Registry

Vienna International Centre  
PO Box 300  
A-1400 Vienna, Austria  
[gef@unido.org](mailto:gef@unido.org)

Mr. Juergen Hierold  
GEF Coordinator  
[J.Hierold@unido.org](mailto:J.Hierold@unido.org)  
+43 1 26026 4565

*Copy to:*  
*Ms. Pamela Mikschofsky*  
[p.mikschofsky@unido.org](mailto:p.mikschofsky@unido.org)

### United Nations Development Programme (UNDP) Registry

304 East 45th Street  
New York, NY 10017, USA  
[undpgef@undp.org](mailto:undpgef@undp.org)

Attn: Ms. Adriana Dinu  
GEF Executive Coordinator  
[Adriana.dinu@undp.org](mailto:Adriana.dinu@undp.org)  
+1 212 906 5143

## GEF Project Agency Secretariats

### Corporación Andina de Fomento (CAF)

380 Enrique Canaval Moreyra Ave., 13th Floor,  
San Isidro, Lima  
Lima 27, Peru  
[CAFGEF@caf.com](mailto:CAFGEF@caf.com)

Attn: René Gómez García Palao  
Senior Executive  
[rgomezgarcia@caf.com](mailto:rgomezgarcia@caf.com)  
+511-710-8530

*Copy to:*  
*Ms. Ligia Castro de Doens,*  
*Director*  
*Environment*  
[lcastro@caf.org](mailto:lcastro@caf.org)

### Conservation International (CI)

2011 Crystal Drive, Suite 500  
Arlington VA, 22202  
USA  
[CIGEF@conservation.org](mailto:CIGEF@conservation.org)

Attn: Mr. Miguel Morales  
Vice President/ Managing Director  
CI-GEF Project Agency  
[mamorales@conservation.org](mailto:mamorales@conservation.org)

*Copy to:*  
[osamaroo@conservation.org](mailto:osamaroo@conservation.org)

## GEF Project Agency Secretariats cont'd

---

**Development Bank of Southern Africa  
(DBSA)**

1258 Lever Road, Headway Hill  
Midrand, 1685  
South Africa  
[DBSAGEF@dbsa.org](mailto:DBSAGEF@dbsa.org)

Attn: Ms. Nomsa T. Zondi  
GEF Coordinator  
[nomsaz@dbsa.org](mailto:nomsaz@dbsa.org)  
+27 11 313 3491

**Foreign Economic Cooperation Office  
(FECO)**

Ministry of Environmental Protection  
ECO Building  
No.5 Houyingfang Hutong  
Xicheng District, Beijing 100035, China  
[FECOGEF@mepfeco.org.cn](mailto:FECOGEF@mepfeco.org.cn)

Attn: Mr. Xiao Xuezhi  
Deputy Director General  
[xiao.xuezhi@mepfeco.org.cn](mailto:xiao.xuezhi@mepfeco.org.cn)  
+ 86-10-82268807

*Copy to:*  
*Ms. Chen Haijun*  
*Director,*  
[chen.haijun@mepfeco.org.cn](mailto:chen.haijun@mepfeco.org.cn)  
+ 86-10-82268846

Ms. Yan Wei  
Senior Project Manager  
[yan.wei@mepfeco.org.cn](mailto:yan.wei@mepfeco.org.cn)  
+ 86-10-82268848

**International Union for Conservation of  
Nature (IUCN)**

Rue Mauverney, 28  
CH-1196 Gland,  
Switzerland  
[IUCN-GEF@iucn.org](mailto:IUCN-GEF@iucn.org)

Attn: Cyrie Sendashonga  
Global Director, Policy and Programme  
[Cyriaque.Sendashonga@iucn.org](mailto:Cyriaque.Sendashonga@iucn.org)  
+41 22 999 03 17

*Copy to:*  
*Mr. Jean-Yves Pirot,*  
*Head, GEF Coordination Unit*  
[jean-yves.pirot@iucn.org](mailto:jean-yves.pirot@iucn.org)  
+41 22 999 02 56

*Mr. Sébastien Delahaye*  
*Portfolio Manager*  
*GEF Coordination Unit*  
[Sebastien.Delahaye@iucn.org](mailto:Sebastien.Delahaye@iucn.org)  
+41 22 999 02 51

---

## GEF Project Agency Secretariats cont'd

---

**World Wildlife Fund, Inc. (WWF-US)**  
1250 24th St, NW  
Washington, DC 20037-1193  
[WWFGEF@wwfus.org](mailto:WWFGEF@wwfus.org)

Attn: Dr. David S. McCauley  
Senior Vice President  
Policy and Government Affairs  
[david.mccauley@wwfus.org](mailto:david.mccauley@wwfus.org)  
+1-202-495-4159

*Copy to:*  
*Mr. Hervé Lefeuve*  
*Senior Director, GEF Relations and*  
*GEF Coordinator*  
[Herve.Lefeuve@wwfus.org](mailto:Herve.Lefeuve@wwfus.org)  
+1-202-459-8533

**Fundo Brasileiro para a Biodiversidade (FUNBIO)**  
Rua Voluntários da Pátria, 286 5º andar  
Botafogo, Rio de Janeiro, RJ  
22270-014  
[funbiogef@funbio.org.br](mailto:funbiogef@funbio.org.br)

Attn: Fabio Heuseler Ferreira Leite  
GEF Coordinator  
[fabio.leite@funbio.org.br](mailto:fabio.leite@funbio.org.br)  
+ 55 21 2123-5326

*Copy to:*  
[agenciageg@funbio.org.br](mailto:agenciageg@funbio.org.br)

**Banque Ouest Africaine de Développement (BOAD)**  
68 Avenue de La Liberation  
1172 - Lomé - Togo

Attn: Almamy Mbengue  
Director of Environment and  
Finance Climate  
GEF Coordinator and Focal  
Point [ambengue@boad.org](mailto:ambengue@boad.org)  
+ 228 22.232.525.24

*Copy to:*  
*Ibrahim Traore*  
*Principal Economist of environment,*  
*GEF Alternate Focal Point*  
[itraore@boad.org](mailto:itraore@boad.org)  
+1

---

**DISTRIBUTION LIST WHEN SUBMITTING PROJECT PROPOSALS  
FOR GEF CEO APPROVAL/ENDORSEMENT**

As a rule, all GEF Agencies are expected to circulate their project proposals to the GEF Secretariat, GEF Agencies, and STAP and to the relevant Convention Secretariat.

**Standard Distribution List for all projects (PIF, PPG, FSP, MSP, and EA):**

gcoordination@thegef.org  
STAP.Secretariat@unep.org  
thomas.hammond@unep.org  
adbgef@adb.org  
bdunn@adb.org  
njahmad@adb.org  
gef\_afdb@afdb.org  
m.assouyouti@afdb.org  
k.lonsway@afdb.org  
ambengue@boad.org  
dtoe@boad.org  
itraore@boad.org  
straore@boad.org  
ytoure@boad.org  
CAFGEF@caf.com  
rgomezgarcia@caf.com  
lcastro@caf.org  
CIGEF@conservation.org  
lspijkerman@conservation.org  
osamaroo@conservation.org  
DBSAGEF@dbsa.org  
nomsaz@dbsa.org  
ebrdgef@ebrd.com  
simonetm@ebrd.com  
GEF-Coordination-Unit@fao.org  
faogef@fao.org  
TCI-Director@fao.org  
Jeffrey.Griffin@fao.org  
FECOGEF@mepfeco.org.cn  
xiao.xuezhi@mepfeco.org.cn  
chen.haijun@mepfeco.org.cn  
yan.wei@mepfeco.org.cn  
FUNBIOGEF@funbio.org.br  
agenciagef@funbio.org.br  
fabio.leite@funbio.org.br  
idb-gef@iadb.org  
michaelc@iadb.org  
ECDmailbox@ifad.org  
p.saintange@ifad.org  
m.astralaga@ifad.org  
s.mwanundu@ifad.org  
a.nazario@ifad.org  
IUCNGEF@iucn.org  
Cyriaque.Sendashonga@iucn.org  
Sebastien.Delahaye@iucn.org  
jean-yves.piro@iucn.org  
unepgef@unep.org  
brennan.vandyke@unep.org  
Kelly.West@unep.org  
gef@unido.org  
j.hierold@unido.org  
p.mikschofsky@unido.org  
undpgef@undp.org  
adriana.dinu@undp.org  
wbgefoperations@worldbank.org  
WWFGEF@wwfus.org  
David.McCauley@wwfus.org  
Herve.Lefeuvre@wwfus.org

**To be included in the Standard Distribution List as appropriate:**

*For Biodiversity Projects:*

secretariat@cbd.int  
yibin.xiang@cbd.int

*For Climate Change Projects:*

gefprojects@unfccc.int  
gefenabling.activities@unfccc.int

*For Land Degradation Projects:*

secretariat@unccd.int  
athust@unccd.int

*For Mercury Projects*

jacob.duer@unep.org  
shelia.logan@unep.org

*For POPs Projects:*

ta@brsmeas.org  
maria.cardenas@brsmeas.org  
frank.moser@brsmeas.org