

Lake Victoria Environmental Management Programme Phase 3

Part I: Project Information

GEF ID
10116

Project Type
FSP

Type of Trust Fund
GET

Project Title
Lake Victoria Environmental Management Programme Phase 3

Countries
Regional, Burundi, Kenya, Rwanda, Tanzania, Uganda

Agency(ies)
World Bank,

Other Executing Partner(s):
Lake Victoria Basin Commission

Executing Partner Type
Government

GEF Focal Area

International Waters

Taxonomy

Focal Areas, International Waters, Freshwater, Lake Basin, Pollution, Nutrient pollution from Wastewater, Nutrient pollution from all sectors except wastewater, Biomes, Constructed Wetlands, Influencing models, Strengthen institutional capacity and decision-making, Stakeholders, Local Communities, Communications, Strategic Communications, Gender Equality, Gender Mainstreaming, Gender-sensitive indicators, Gender results areas, Knowledge Generation and Exchange, Capacity, Knowledge and Research, Knowledge Generation, Training, Learning, Indicators to measure change, Climate Change Adaptation 1, Climate Finance (Rio Markers), Climate Change Mitigation 0

Duration

60

In Months

Agency Fee(\$)

867,580

Submission Date

11/16/2018

A. Indicative Focal/Non-Focal Area Elements

| Programming Directions | Trust Fund | GEF Amount(\$) | Co-Fin Amount(\$) |
|------------------------|--------------------------------|------------------|--------------------|
| IW-3_P6 | GET | 9,132,420 | 251,000,000 |
| | Total Project Cost (\$) | 9,132,420 | 251,000,000 |

B. Indicative Project description summary

Project Objective

The Project Development Objective (PDO) is to strengthen transboundary natural resources management and climate-resilience, and reduce environmental degradation in selected hotspot areas in the Lake Victoria Basin

Project Outcomes

Project outcomes and outputs:

Outcomes component 1.

Improved regional information services on water quality and ecosystem health

Regional investment planning for improved water quality and eco-system services

Lake Victoria Basin Commission (LVBC)'s and its member states capacities strengthened to deliver on its more recent mandate on water quality monitoring & enforcement

Outputs:

Regional water quality information platform developed (including adopting innovative disruptive technology).

Regional water quality guideline developed

Regional investment plan (sanitation, erosion control and aquatic weeds measures) for the LVB developed in line with the SAP recommendations.

Technical assistance to support an institutional assessment to identify measures for financial and institutional sustainability

Outcomes component 2.

Sustainable, climate-resilient land and water resource management

Control of water hyacinth and protection of fish breeding areas in selected fishing communities in the lake

Eco-system and natural resource management (NRM) monitoring

Outputs:

Share of targeted beneficiaries adopting climate-resilient land-linked practices

Area under sustainable landscape management practices

Fostering private sector investment in controlling water hyacinth and other invasive species in the lake.

Collection and collation of NRM data (on land, water and fish resources)

Outcomes component 3.

Strengthen environmental regulations and enforcement to increase transparency and enhance compliance for pollution and water quality

Strengthened regulatory and incentive systems for environmental pollution control and prevention

Outputs:

Pollution and Water quality monitoring and discharge assessment conducted (to collect and share data for the Lake and in major tributaries)

Technical support to promote resource efficiency and cleaner production (RECP) in selected polluting industries through advancing training, in-plant assessment, and best-practice sharing.

Development of pollution prevention and emergency response systems in selected hotspots along the Lake.

Outcomes component 4.

Project coordination and knowledge management

Outputs:

Project coordination

Project M&E

Active IWLearn participation (1% of grant)

| Project Component | Financing Type | Trust Fund | GEF Amount(\$) | Co-Fin Amount(\$) |
|---|-----------------------|-------------------|-----------------------|--------------------------|
| Component 1: Strengthening cooperative management of transboundary natural resources and climate change | Investment | GET | 4,497,543 | 18,000,000 |
| Component 2: | Investment | GET | 2,000,000 | 135,000,000 |

| Project Component | Financing Type | Trust Fund | GEF Amount(\$) | Co-Fin Amount(\$) |
|---|-----------------------|--------------------------------|-----------------------|--------------------------|
| Sustainable land and water resource management in selected soil erosion hotspots | | | | |
| Component 3: Monitoring, enforcement and prevention of pollution | Investment | GET | 1,300,000 | 73,000,000 |
| Component 4: Project coordination and knowledge management, including GEF IWLEARN | Investment | GET | 900,000 | 20,000,000 |
| | | Sub Total (\$) | 8,697,543 | 246,000,000 |
| Project Management Cost (PMC) | | GET | 434,877 | 5,000,000 |
| | | Total Project Cost (\$) | 9,132,420 | 251,000,000 |

For multi-trust fund projects, provide the total amount of PMC in Table B and indicate the list of PMC among the different trust funds here:

C. Indicative sources of Co-financing for the Project by name and by type

| Sources of Co-financing | Name of Co-financier | Type of Co-financing | Investment Mobilized | Amount(\$) |
|-------------------------|--|----------------------|-------------------------------|--------------------|
| Donor Agency | International Development Agency | Grant | Investment mobilized | 233,000,000 |
| Government | Governments of participating countries | In-kind | Recurrent expenditures | 18,000,000 |
| | | | Total Project Cost(\$) | 251,000,000 |

Describe how any "Investment Mobilized" was identified

Government financing is noted as in kind. In addition the World Bank/International Development Agency Project is under preparation - the baseline investment to support implementation of the Lake Victoria Environmental Management Programme Phase 3. Together with GEF funding this project will allow for further private investments to be leveraged.

D. Indicative Trust Fund Resources Requested by Agency(ies), Country(ies), Focal Area and the Programming of Funds

| Agency | Trust Fund | Country | Focal Area | Programming of Funds | Amount(\$) | Fee(\$) |
|------------|------------|----------|----------------------|----------------------|-------------------------------|--------------------------|
| World Bank | GET | Regional | International Waters | | 9,132,420 | 867,580 |
| | | | | | Total Project Cost(\$) | 9,132,420 867,580 |

E. Project Preparation Grant (PPG)

PPG Amount (\$)

PPG Agency Fee (\$)

| Agency | Trust Fund | Country | Focal Area | Programming of Funds | Amount(\$) | Fee(\$) |
|--------------------------------|-------------------|----------------|-------------------|-----------------------------|-------------------|----------------|
| Total Project Costs(\$) | | | | | 0 | 0 |

Core Indicators

Indicator 7 Number of shared water ecosystems (fresh or marine) under new or improved cooperative management 🔍

| | Number (Expected at PIF) | Number (Expected at CEO Endorsement) | Number (Achieved at MTR) | Number (Achieved at TE) |
|------------------------|--------------------------|--------------------------------------|--------------------------|-------------------------|
| Shared water Ecosystem | Nile | | | |
| Count | 1 | 0 | 0 | 0 |

Indicator 7.1 Level of Transboundary Diagnostic Analysis and Strategic Action Program (TDA/SAP) formulation and implementation (scale of 1 to 4; see Guidance) 🔍

| Shared Water Ecosystem | Rating (Expected at PIF) | Rating (Expected at CEO Endorsement) | Rating (Achieved at MTR) | Rating (Achieved at TE) |
|------------------------|--------------------------|--------------------------------------|--------------------------|-------------------------|
| Nile | 4 | | | |

Indicator 7.2 Level of Regional Legal Agreements and Regional management institution(s) (RMI) to support its implementation (scale of 1 to 4; see Guidance) 🔍

| Shared Water Ecosystem | Rating (Expected at PIF) | Rating (Expected at CEO Endorsement) | Rating (Achieved at MTR) | Rating (Achieved at TE) |
|------------------------|--------------------------|--------------------------------------|--------------------------|-------------------------|
| Nile | 4 | | | |

Indicator 7.3 Level of National/Local reforms and active participation of Inter-Ministerial Committees (IMC; scale 1 to 4; See Guidance) 🔍

| Shared Water Ecosystem | Rating (Expected at PIF) | Rating (Expected at CEO Endorsement) | Rating (Achieved at MTR) | Rating (Achieved at TE) |
|------------------------|--------------------------|--------------------------------------|--------------------------|-------------------------|
| Nile | 3 | | | |

Indicator 7.4 Level of engagement in IWLEARN through participation and delivery of key products(scale 1 to 4; see Guidance) 🔍

| Shared Water Ecosystem | Rating (Expected at PIF) | Rating (Expected at CEO Endorsement) | Rating (Achieved at MTR) | Rating (Achieved at TE) |
|------------------------|--------------------------|--------------------------------------|--------------------------|-------------------------|
| Nile | 3 | | | |

Indicator 4 Area of landscapes under improved practices (hectares; excluding protected areas) 🔍

| Ha (Expected at PIF) | Ha (Expected at CEO Endorsement) | Ha (Achieved at MTR) | Ha (Achieved at TE) |
|----------------------|----------------------------------|----------------------|---------------------|
| 30000.00 | 0.00 | 0.00 | 0.00 |

Indicator 4.1 Area of landscapes under improved management to benefit biodiversity (hectares, qualitative assessment, non-certified) 🔍

| Ha (Expected at PIF) | Ha (Expected at CEO Endorsement) | Ha (Achieved at MTR) | Ha (Achieved at TE) |
|----------------------|----------------------------------|----------------------|---------------------|
| | | | |

Indicator 4.2 Area of landscapes that meets national or international third party certification that incorporates biodiversity considerations (hectares) 🔍

| Ha (Expected at PIF) | Ha (Expected at CEO Endorsement) | Ha (Achieved at MTR) | Ha (Achieved at TE) |
|----------------------|----------------------------------|----------------------|---------------------|
| | | | |

Third Party Certification

Indicator 4.3 Area of landscapes under sustainable land management in production systems 🔍

| Ha (Expected at PIF) | Ha (Expected at CEO Endorsement) | Ha (Achieved at MTR) | Ha (Achieved at TE) |
|----------------------|----------------------------------|----------------------|---------------------|
| 30,000.00 | | | |

Indicator 4.4 Area of High Conservation Value Forest (HCVF) loss avoided 🔍

| Ha (Expected at PIF) | Ha (Expected at CEO Endorsement) | Ha (Achieved at MTR) | Ha (Achieved at TE) |
|----------------------|----------------------------------|----------------------|---------------------|
| | | | |

Documents (Please upload document(s) that justifies the HCVF)

| Title | Submitted |
|-------|-----------|
| | |

Core Indicators at Project Identification Form (PIF)

Indicator 11 Number of direct beneficiaries disaggregated by gender as co-benefit of GEF investment ⓘ

| | Number (Expected at PIF) | Number (Expected at CEO Endorsement) | Number (Achieved at MTR) | Number (Achieved at TE) |
|--------|--------------------------|--------------------------------------|--------------------------|-------------------------|
| Female | 50,000 | | | |
| Male | 50,000 | | | |
| Total | 100000 | 0 | 0 | 0 |

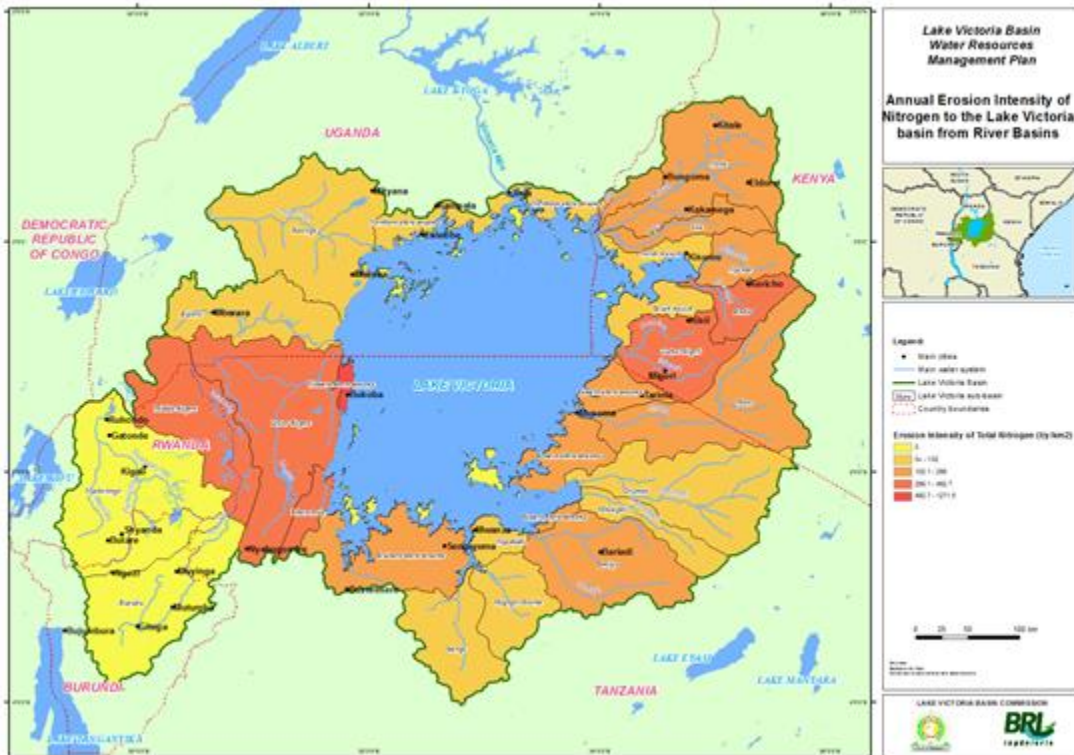
Provide additional explanation on targets, other methodologies used, and other focal area specifics (i.e., Aichi targets in BD) including justification where core indicator targets are not provided

Part II. Project Justification

1b. Project Map and Coordinates

Please provide geo-referenced information and map where the project interventions will take place.

Lake Victoria. See Fig 3 of PCN



2. Stakeholders

Select the stakeholders that have participated in consultations during the project identification phase:

Indigenous Peoples and Local Communities

Civil Society Organizations

Private Sector Entities

If none of the above, please explain why:

In addition, provide indicative information on how stakeholders, including civil society and indigenous peoples, will be engaged in the project preparation, and their respective roles and means of engagement.

This proposal is Phase 3 of the regional environmental program; previous two phases are completed as of mid 2018. Ongoing dialogue and consultations governments and LVBC are in place. All stakeholders groups were consulted and engaged in various places during LVEMP 2 implementation. They will be continuing to be consulted and engaged in implementation of LVEMP 3. Participation of some stakeholders will be measured throughout project implementation (for example, Number of private organization and community groups engaged in hyacinth removal activities). WB environment and social standards will be applied.

3. Gender Equality and Women's Empowerment

Briefly include below any gender dimensions relevant to the project, and any plans to address gender in project design (e.g. gender analysis).

Improved delivery of social services for vulnerable groups, particularly women, are an expected outcome of LVEMP3. Women will be consulted in project design and as beneficiaries. Gender disaggregated data on beneficiaries will be presented. The project will monitor women's participation in the decision making process and also focus on SLM and livelihood activities. Number of female direct beneficiaries of the project will be monitored during implementation.

Does the project expect to include any gender-responsive measures to address gender gaps or promote gender equality and women empowerment? Yes

closing gender gaps in access to and control over natural resources;

improving women's participation and decision-making; and/or

generating socio-economic benefits or services for women.

Will the project's results framework or logical framework include gender-sensitive indicators?

Yes

4. Private sector engagement

Will there be private sector engagement in the project?

Yes

Please briefly explain the rationale behind your answer.

Component 2 will support integration of aquatic weed control measures and fish breeding area protection into national-implemented watershed management measures. Aiming to retain gains made under previous projects, this work will continue to suppress aquatic weeds and will strive to promote private and community participation in aquatic weed control measures. Policy reform required to allow people to remove and use the water hyacinth will be supported under the project, seeking to share good practice within the region and learn from other countries challenged by water hyacinth where possible. While supporting selected fishing communities to control water hyacinth, the sub-component will also support them to protect priority fish breeding areas in the lake. Field-interventions will focus on Homo Bay and the Winam Gulf and other similar hot spot areas will be identified using remote sensing data and field reconnaissance conducted during project preparation. There are private companies who are trying to use water hyacinth, converting it for marketable biofuel product. The sub-component will support private sector participation. GEF financing will be used for facilitating this process by capacity development of entrepreneurs and organizing information sharing opportunities. This sub-component will also interface with the information services platform under Component 1, which will provide aquatic weed early warning information and will address regional policy measures related to aquatic weed control and utilization.

Part III: Approval/Endorsement By GEF Operational Focal Point(S) And Gef Agency(ies)

A. RECORD OF ENDORSEMENT OF GEF OPERATIONAL FOCAL POINT (S) ON BEHALF OF THE GOVERNMENT(S): (Please attach the Operational Focal Point endorsement letter with this template).

| Name | Position | Ministry | Date |
|----------------------|--|--|------------|
| Emmmanuel Ndorimana | GEF Operational Focal Point, Permanent Secretary | Ministry of Environment, Agriculture and Livestock | 11/21/2018 |
| Dr. Deo-Guide Rurema | GEF Operational Focal Point | Ministry of Environment, Agriculture and Livestock | 6/25/2018 |
| Charles T. Sunkuli | Principal Secretary | Ministry of Environment and Forestry | 6/7/2018 |
| Coletha U. Ruhamyia | Director General | Rwanda Environment Management Authority | 8/14/2018 |
| Joseph K. Malongo | Permanent Secretary | Vice President's Office, United Republic of Tanzania | 10/11/2018 |
| Patrick Ocailap | Deputy Secretary of the Treasury/GEF OFP | Ministry of Finance, Planning and Economic Development | 10/29/2018 |

ANNEX A: Project Map and Geographic Coordinates

Please provide geo-referenced information and map where the project intervention takes place

ANNEX B: GEF 7 Core Indicator Worksheet

Use this Worksheet to compute those indicator values as required in Part I, Table F to the extent applicable to your proposed project. Progress in programming against these targets for the program will be aggregated and reported at any time during the replenishment period. There is no need to complete this table for climate adaptation projects financed solely through LDCF and SCCF.

| Project Core Indicators | | Expected at PIF |
|-------------------------|---|-----------------|
| 1 | Terrestrial protected areas created or under improved management for conservation and sustainable use (Hectares) | |
| 2 | Marine protected areas created or under improved management for conservation and sustainable use (Hectares) | |
| 3 | Area of land restored (Hectares) | 30,000 |
| 4 | Area of landscapes under improved practices (excluding protected areas)(Hectares) | 30,000 |
| 5 | Area of marine habitat under improved practices (excluding protected areas) (Hectares) | |
| | Total area under improved management (Hectares) | 60,000 |
| 6 | Greenhouse Gas Emissions Mitigated (metric tons of CO ₂ e) | |
| 7 | Number of shared water ecosystems (fresh or marine) under new or improved cooperative management | 1 |
| 8 | Globally over-exploited marine fisheries moved to more sustainable levels (metric tons) | |

| | | |
|----|---|--|
| 9 | Reduction , disposal/destruction, phase out, elimination and avoidance of chemicals of global concern and their waste in the environment and in processes, materials and products (metric tons of toxic chemicals reduced) | |
| 10 | Reduction, avoidance of emissions of POPs to air from point and non-point sources (grams of toxic equivalent gTEQ) | |
| 11 | Number of direct beneficiaries disaggregated by gender as co-benefit of GEF investment | 100,000 50,000 of which are women |

ANNEX C: Project Taxonomy Worksheet

Use this Worksheet to list down the taxonomic information required under Part1 by ticking the most relevant keywords/topics//themes that best describes the project

Detailed taxonomy is defined in the Part I of the Template

Focal Areas, International Waters, Freshwater, Lake Basin, Pollution, Nutrient pollution from Wastewater, Nutrient pollution from all sectors except wastewater, Biomes, Constructed Wetlands, Influencing models, Strengthen institutional capacity and decision-making, Stakeholders, Local Communities, Communications, Strategic Communications, Gender Equality, Gender Mainstreaming, Gender-sensitive indicators, Gender results areas, Knowledge Generation and Exchange, Capacity, Knowledge and Research, Knowledge Generation, Training, Learning, Indicators to measure change